



COLINDALE GARDENS

LONDON NW9

THE SHARED OWNERSHIP COLLECTION

Stylish studio, one and two bedroom apartments



COLINDALE
GARDENS

LONDON NW9

THE SHARED OWNERSHIP COLLECTION

WELCOME

The Shared Ownership Collection is the latest release of homes at Colindale Gardens.

Located in the heart of this visionary new community, with stunning views over its main park, these contemporary studio, one and two bedroom apartments benefit from private balconies or terraces – or both. Offering every modern convenience, these homes are ideal for those who love the idea of living in a rapidly up-and-coming district of London while being within easy reach of the City.



COLINDALE
GARDENS

LONDON NW9

THE SHARED OWNERSHIP COLLECTION

REFRESH YOUR OUTLOOK

The Shared Ownership Collection is part of a vibrant new community that's designed for 21st-century living.

At Colindale Gardens, you'll be able to enjoy nine acres of attractive open space that's perfect for meeting up with friends, relaxing and soaking up the atmosphere of a friendly neighbourhood. There'll be walkways, cycle paths, large open grass areas and tranquil corners with attractive trees and landscaping. More amenities are also on the way, including cafés and shops, adding to the vibe of this attractive development.

Colindale Gardens



A BREATH OF FRESH AIR

A growing community that's popular with homebuyers who are looking for accessible, modern living that's just a short journey from central London.

When it's time to enjoy the great outdoors, Colindale has a lot to offer. Silkstream Park is a beautiful green space, with a design that was influenced by the Arts & Craft and the Garden City movements. Silver Jubilee Park offers pitches for soccer and Gaelic football enthusiasts, as well as an outdoor gym. Stray a little further afield and you'll discover Fryent Country Park, with 254 acres of rolling fields and woodland.

If shopping is your thing, you'll only be a short hop from Brent Cross Shopping Centre. Home to over 120 stores that range from Apple and Swarovski to Hugo Boss and H&M, this is a retail paradise that's a top destination for fashion, beauty, footwear, technology, jewellery – and much more.

And don't forget – you'll also be living a short distance from Wembley Stadium, home to some of the world's top sporting and musical events!



CULINARY DELIGHTS

You'll also be able to enjoy a great range of world cuisine on your doorstep. Jakarta is a top-notch Indonesian and Malaysian restaurant, serving imaginative South East Asian food amid exotic carvings and greenery. Café Anglais is a relaxed and stylish setting that has been serving sophisticated menus since 1936. Then there's Bang Bang – the largest Asian food court in the capital – which dishes up the UK's biggest range of specialist Asian restaurants under one roof.



Colindale Train and Underground Station

WELL CONNECTED

Colindale Gardens is a great place to live if you commute or enjoy exploring what Central London has to offer. Colindale Underground Station is a short walk away, and it's where you can catch regular Northern Line services into the City.

You'll also be close to Mill Hill Broadway Thameslink Station, which has regular departures to St Pancras, St Albans and Rainham – not to mention Luton Airport, where you can jet off for both business and leisure.



St Albans
13 mins (Thameslink from Mill Hill)



St Pancras International
18 mins (Thameslink from Mill Hill)



Luton Airport Parkway
25 mins (Thameslink from Mill Hill)



Leicester Square
26 mins (Underground Station)



Bank
31 mins (Underground Station)



COLINDALE
GARDENS

LONDON NW9

THE SHARED OWNERSHIP COLLECTION

TIME FOR YOU

Complementing these stunning homes there is a tranquil haven to enjoy. The sanctuary of the roof terrace allows you to take time out to enjoy the fresh air, views and watch life carrying on below while you unwind.

For the days when you need some exercise, you'll be pleased to know residents' have exclusive access to the gym situated within The Park Collection, along with a sauna and steam room.

COLINDALE
TUBE STATION

PROPOSED
RETAIL HUB



AERODROME
ROAD

PEEL SQUARE

M1
MOTORWAY

CONCIERGE AND
RESIDENTS' GYM

4 ACRE PARK

NEW SCHOOL



Computer generated artist impression of the South East corner of the Shared Ownership block



COLINDALE
GARDENS

LONDON NW9

THE SHARED OWNERSHIP COLLECTION

THE FINER QUALITIES



Flexible open plan living layouts

Open plan kitchens, dining and living spaces are ideal for relaxing, working and entertaining friends at home.



Carefully chosen

Every aspect of your home has been created with quality in mind, from the soft closing doors of the kitchen units to the LED lighting in every room.



Superior finish

The high specification including the quality fixtures and fittings give these new homes a premium feel.

Whether you choose a studio, one or two bedroom apartment, you'll soon discover that The Shared Ownership Collection is perfectly designed for contemporary living.

Interior layouts have been carefully designed to give you plenty of flexibility and the space to express your own style.

Each home has been created to a high-quality specification that has to be seen to be properly appreciated.

Peabody prides itself on creating homes with careful attention to detail, which you'll see all around your new home - in everything from Bosch kitchen appliances to stylish modern sanitaryware, flooring and lighting.

THE FINEST INGREDIENTS

Cooking for family and friends is a pleasure when you can enjoy a kitchen like this. Contemporary units are paired with Bosch appliances and an elegant, thin profile worktop. Back-painted glass splashbacks provide a stylish touch, while authentic wood grain laminate flooring makes a practical yet elegant statement.







COLINDALE
GARDENS

LONDON NW9

THE SHARED OWNERSHIP COLLECTION

SWEET DREAMS

In your bedroom, you will have no problems having a comfortable nights sleep. All master bedrooms boast built in wardrobes with sliding doors, for organised storage.

SPECIFICATION

KITCHEN

- Omega inset interior designed fitted kitchens
- Gloss cabinet doors with soft close
- Slimline laminate worktop
- Full height back painted glass splashback to hob
- Stainless steel sink with satin chrome mixer tap
- Bosch single oven
- Bosch four zone glass ceramic hob with integrated telescopic hood
- Bosch integrated dishwasher*
- Bosch 50/50 fridge freezer
- Free standing washing machine located in hallway cupboard or kitchen**
- Recycling bin
- Cutlery drawer inserts

BATHROOM

- Ceramic wall and floor tiles
- Wall mounted washbasin
- WC with concealed cistern, aquablade technology and polished chrome dual flush button
- White steel bath with timber effect bath panel with LED downlighters (to all bathrooms)
- Polished chrome electric heated towel rail

JOINERY

- Oak veneer apartment entrance and internal doors
- Feature skirtings and architraves
- Fitted wardrobe with 2 panel sliding door, hanging rail and high level shelf to bedroom 1



ELECTRICS

- Dimmer switches to kitchen/living/dining area
- High level satin chrome sockets to kitchen
- LED downlights to hallway, kitchen/living/dining area, bathrooms and bedrooms
- TV and phone points to living and bedroom area
- Wiring for digital TV including Sky+HD to living area and bedroom 1
- Colour video door entry system
- Fob entry system to apartment block
- CCTV to block entrance





WALL AND FLOOR FINISHES

- White emulsion painted internal walls and ceilings
- Authentic wood grain laminate flooring to hallway, kitchen/living/dining area
- Carpet to all bedrooms, stairs and landings

COMMUNAL AREAS

- Landscaped gardens
- Lift to all floors
- Concierge service†
- Access to residents-only gym, sauna and steam room
- 24 hours Concierge Service

GENERAL

- One year Redrow Warranty
- 10 year LABC building warranty
- 250 year lease from January 2017
- Parking to selected apartments only***
- Balcony or terrace area to all apartments with decking and external lighting

* Dishwashers vary in size

** Location of washing machines may vary

*** Please ask a sales consultant for further info on parking

† Concierge service will be in a central location within the development

Your attention is drawn to the fact it may not be possible to obtain the products as referred to in the specification. In such cases, a similar alternative will be provided. Redrow reserve the right to make these changes. Please ask a sales consultant for further information.

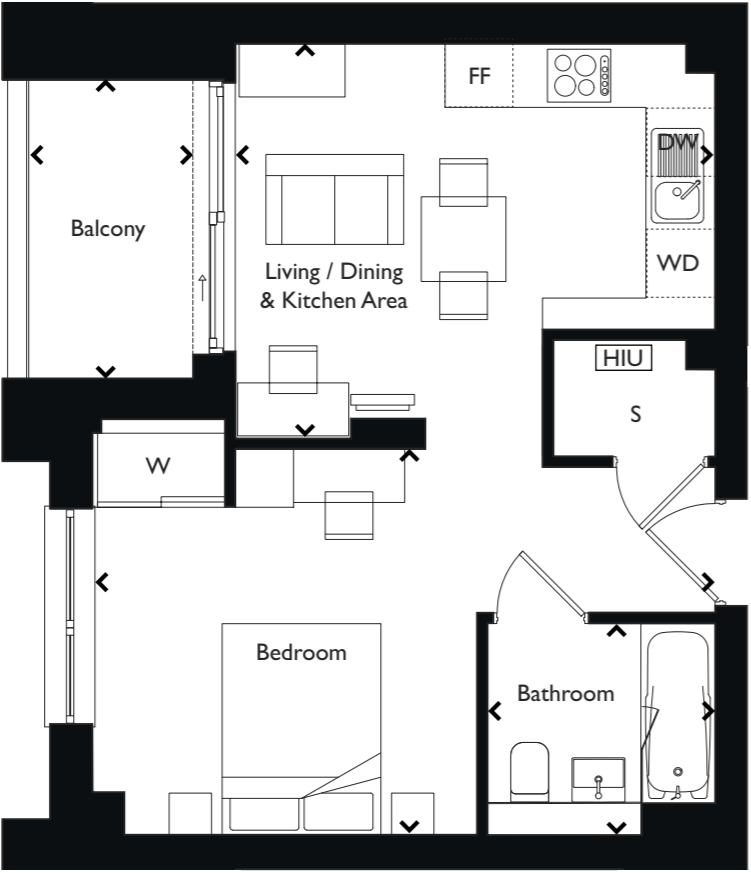


TYPE 14

STUDIO

1 bedroom - 2 person
Shared Ownership
Level 1 Only

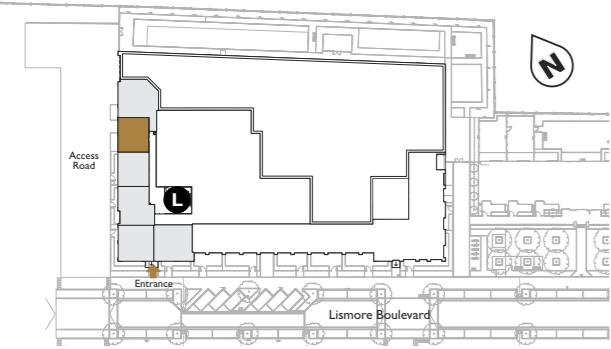
Reference:
Flat No. 1 - Level 1



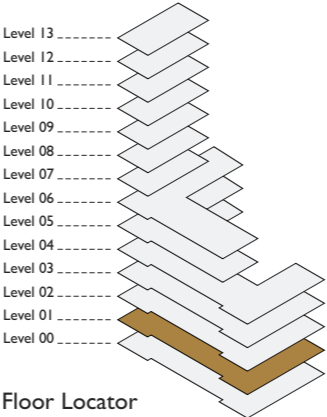
- Key:
- FF Fridge Freezer
 - DW Dishwasher
 - WD Washer Dryer
 - HIU Heat Interface Unit
 - W Wardrobe
 - S Storage

◀ ▶ Measurement points

Gross Internal Area	39.18m ²	421.7ft ²
Living / Dining & Kitchen Area	4.53m x 3.73m	14.86ft x 12.23ft
Bedroom	3.64m x 3.63m	11.94ft x 11.90ft
Bathroom	2.15m x 2.00m	7.05ft x 6.56ft
Storage	1.53m x 1.10m	5.02ft x 3.60ft
Balcony (not included in GIA)	4.6m ²	49.5ft ²



Key Plan



Floor Locator

Apartment layouts provide approximate measurements only. Dimensions, which are taken from the indicated points of measurement, are for guidance only and are not intended to be used for carpet sizes, appliance space or items of furniture. Apartment areas are provided as gross internal areas and may vary. Bathroom and kitchen layouts are indicative only and are subject to change. Wardrobe size and position may vary. Ceiling height may vary within select apartments, please speak to the sales team for more information. All balcony dimensions and areas are approximate and may vary. The information contained within this document does not constitute part of any offer, contract or warranty. Whilst the plans have been prepared with all due care for the convenience of the intending purchaser, the information contained herein is a preliminary guide only.

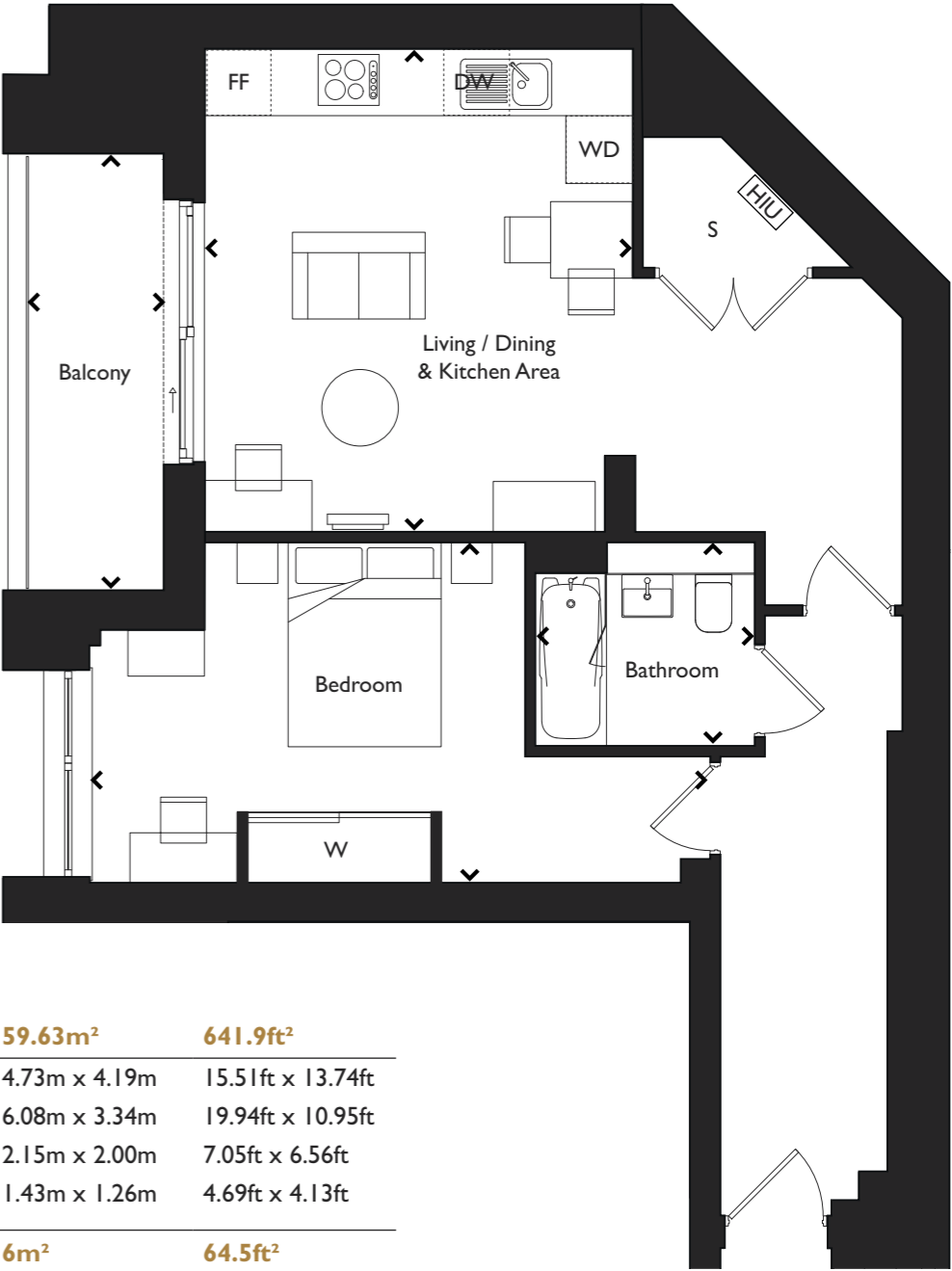
BLOCK H

TYPE 15

ONE BEDROOM

1 bedroom - 2 person
Shared Ownership
Level 1 Only

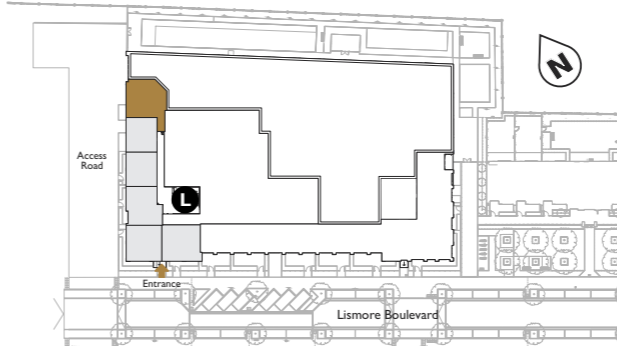
Reference:
Flat No. 2 - Level 1



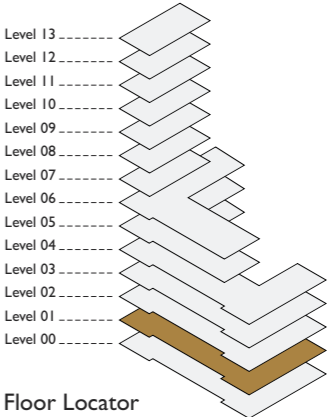
- Key:
- FF Fridge Freezer
 - DW Dishwasher
 - WD Washer Dryer
 - HIU Heat Interface Unit
 - W Wardrobe
 - S Storage

◀ ▶ Measurement points

Gross Internal Area	59.63m ²	641.9ft ²
Living / Dining & Kitchen Area	4.73m x 4.19m	15.51ft x 13.74ft
Bedroom	6.08m x 3.34m	19.94ft x 10.95ft
Bathroom	2.15m x 2.00m	7.05ft x 6.56ft
Storage	1.43m x 1.26m	4.69ft x 4.13ft
Balcony (not included in GIA)	6m ²	64.5ft ²



Key Plan



Floor Locator

Apartment layouts provide approximate measurements only. Dimensions, which are taken from the indicated points of measurement, are for guidance only and are not intended to be used for carpet sizes, appliance space or items of furniture. Apartment areas are provided as gross internal areas and may vary. Bathroom and kitchen layouts are indicative only and are subject to change. Wardrobe size and position may vary. Ceiling height may vary within select apartments, please speak to the sales team for more information. All balcony dimensions and areas are approximate and may vary. The information contained within this document does not constitute part of any offer, contract or warranty. Whilst the plans have been prepared with all due care for the convenience of the intending purchaser, the information contained herein is a preliminary guide only.

BLOCK H

TYPE 16

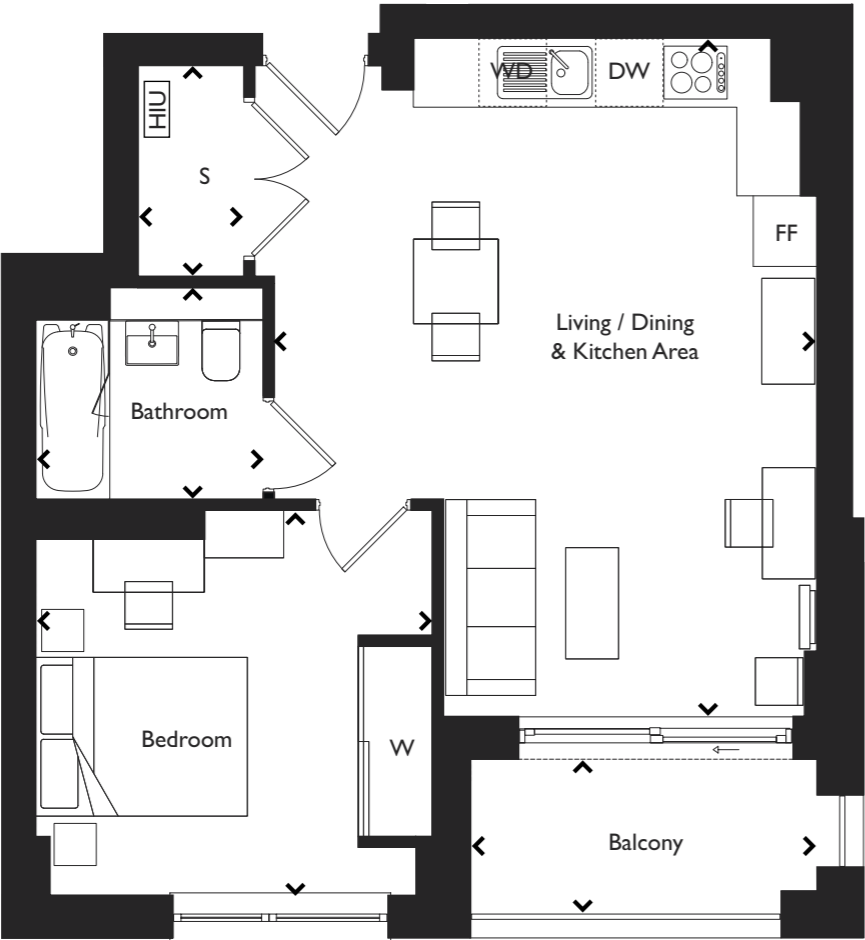
ONE BEDROOM

1 bedroom - 2 person
Shared Ownership
Levels 2, 4, 5 & 6

Reference:
Flat No. 3 - Level 2
Flat No. 23 - Level 4
Flat No. 33 - Level 5
Flat No. 43 - Level 6

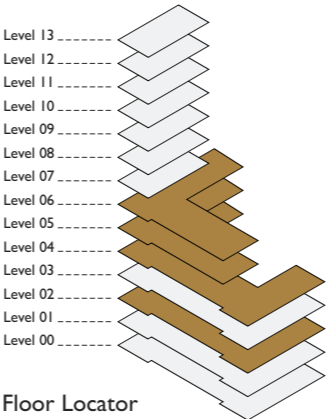
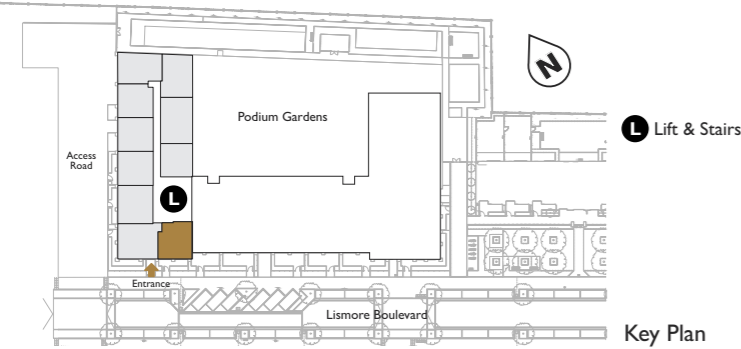
Key:
FF Fridge Freezer
DW Dishwasher
WD Washer Dryer
HIU Heat Interface Unit
W Wardrobe
S Storage

◀ ▶ Measurement points



Gross Internal Area	50.78m ²	546.6ft ²
Living / Dining & Kitchen Area	6.41m x 5.13m	21.03ft x 16.83ft
Bedroom	3.70m x 3.64m	12.14ft x 11.94ft
Bathroom	2.15m x 2.00m	7.05ft x 6.56ft
Storage	1.99m x 1.00m	6.52ft x 3.28ft

Balcony (not included in GIA)	5m²	53.8ft²
--------------------------------------	-----------------------	---------------------------



Apartment layouts provide approximate measurements only. Dimensions, which are taken from the indicated points of measurement, are for guidance only and are not intended to be used for carpet sizes, appliance space or items of furniture. Apartment areas are provided as gross internal areas and may vary. Bathroom and kitchen layouts are indicative only and are subject to change. Wardrobe size and position may vary. Ceiling height may vary within select apartments, please speak to the sales team for more information. All balcony dimensions and areas are approximate and may vary. The information contained within this document does not constitute part of any offer, contract or warranty. Whilst the plans have been prepared with all due care for the convenience of the intending purchaser, the information contained herein is a preliminary guide only.

TYPE 16.1

ONE BEDROOM

1 bedroom - 2 person
Shared Ownership
Level 3

Reference:
Flat No. 13 - Level 3

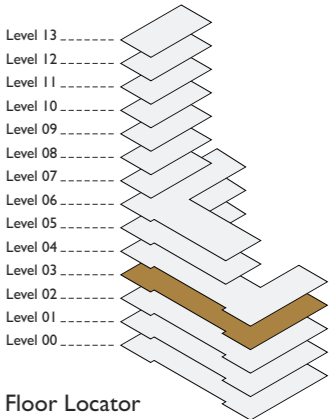
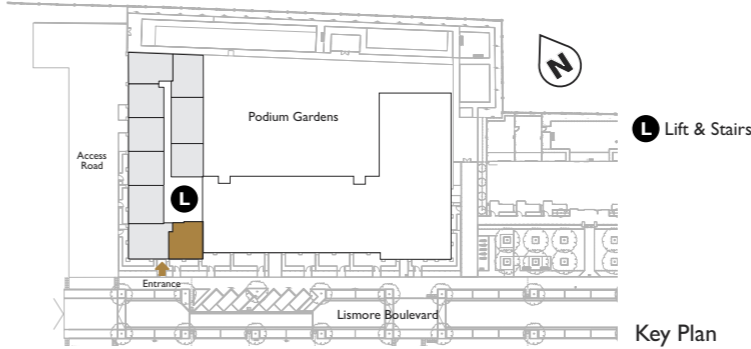
Key:
FF Fridge Freezer
DW Dishwasher
WD Washer Dryer
HIU Heat Interface Unit
W Wardrobe
S Storage

◀ ▶ Measurement points



Gross Internal Area	50.78m ²	546.6ft ²
Living / Dining & Kitchen Area	6.41m x 5.13m	21.03ft x 16.83ft
Bedroom	3.70m x 3.64m	12.14ft x 11.94ft
Bathroom	2.15m x 2.00m	7.05ft x 6.56ft
Storage	1.99m x 1.00m	6.52ft x 3.28ft

Balcony (not included in GIA)	5m²	53.8ft²
--------------------------------------	-----------------------	---------------------------



Apartment layouts provide approximate measurements only. Dimensions, which are taken from the indicated points of measurement, are for guidance only and are not intended to be used for carpet sizes, appliance space or items of furniture. Apartment areas are provided as gross internal areas and may vary. Bathroom and kitchen layouts are indicative only and are subject to change. Wardrobe size and position may vary. Ceiling height may vary within select apartments, please speak to the sales team for more information. All balcony dimensions and areas are approximate and may vary. The information contained within this document does not constitute part of any offer, contract or warranty. Whilst the plans have been prepared with all due care for the convenience of the intending purchaser, the information contained herein is a preliminary guide only.

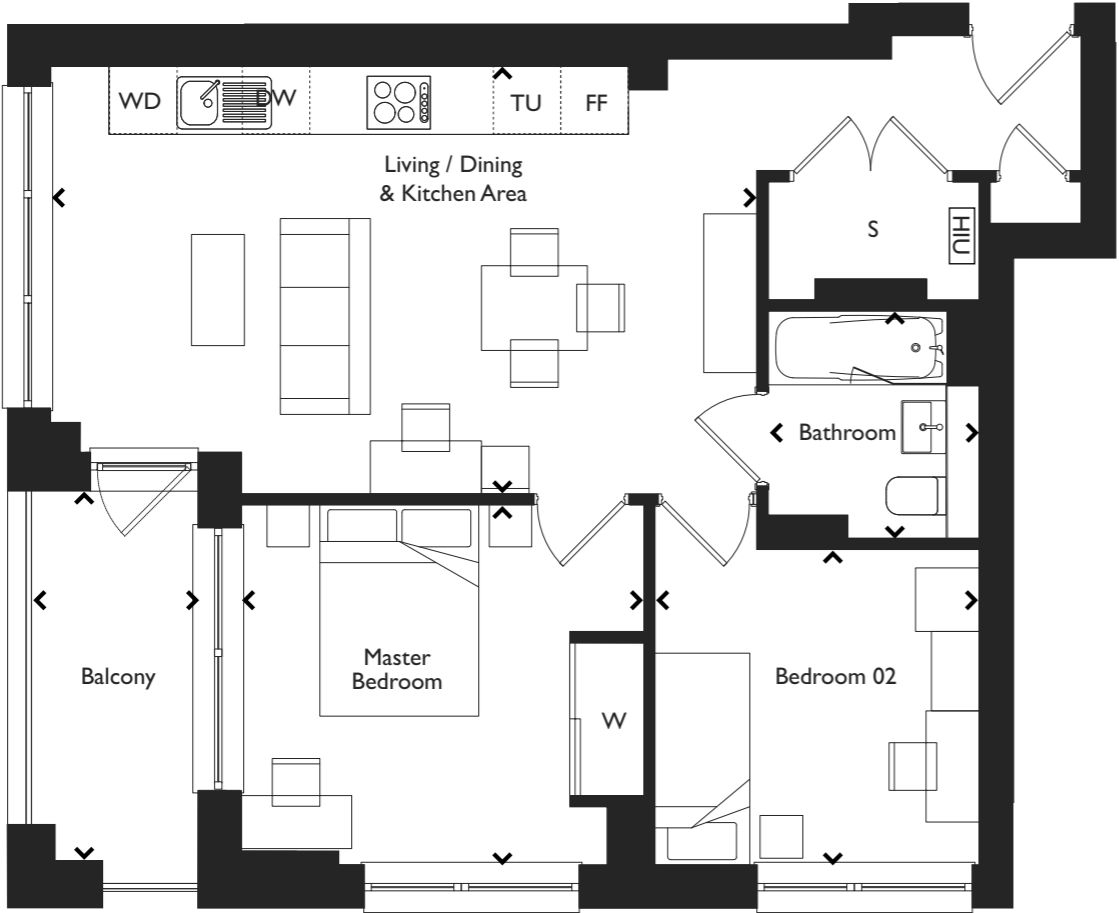
TYPE 17

TWO BEDROOM

2 bedroom - 3 person
Shared Ownership
Level 5 to Level 13

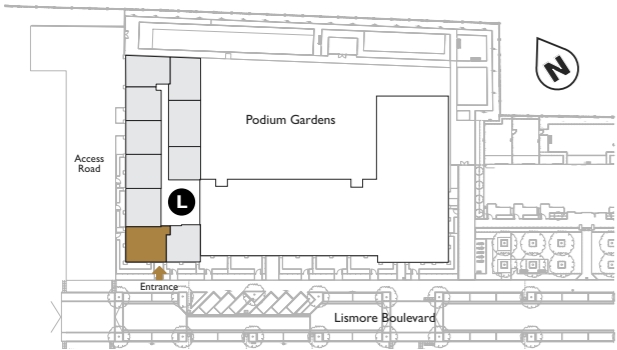
Reference:
Flat No. 34 - Level 5
Flat No. 44 - Level 6
Flat No. 54 - Level 7
Flat No. 59 - Level 8
Flat No. 64 - Level 9
Flat No. 69 - Level 10
Flat No. 74 - Level 11
Flat No. 79 - Level 12
Flat No. 84 - Level 13

Key:
FF Fridge Freezer
DW Dishwasher
WD Washer Dryer
HIU Heat Interface Unit
TU Tall Unit
W Wardrobe
S Storage
◀ ▶ Measurement points

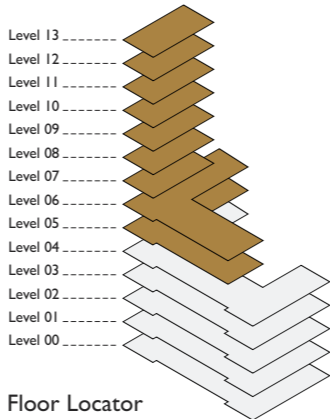


Gross Internal Area	61.39m ²	660.8ft ²
Living / Dining & Kitchen Area	6.67m x 4.04m	21.88ft x 13.25ft
Master Bedroom	3.81m x 3.40m	12.5ft x 11.15ft
Bedroom 02	3.06m x 2.98m	10.03ft x 9.77ft
Bathroom	2.15m x 2.00m	7.05ft x 6.56ft
Storage	2.00m x 1.12m	6.56ft x 3.67ft

Balcony (not included in GIA)	6m ²	64.5ft ²
-------------------------------	-----------------	---------------------



Key Plan



Floor Locator

Apartment layouts provide approximate measurements only. Dimensions, which are taken from the indicated points of measurement, are for guidance only and are not intended to be used for carpet sizes, appliance space or items of furniture. Apartment areas are provided as gross internal areas and may vary. Bathroom and kitchen layouts are indicative only and are subject to change. Wardrobe size and position may vary. Ceiling height may vary within select apartments, please speak to the sales team for more information. All balcony dimensions and areas are approximate and may vary. The information contained within this document does not constitute part of any offer, contract or warranty. Whilst the plans have been prepared with all due care for the convenience of the intending purchaser, the information contained herein is a preliminary guide only.

BLOCK H

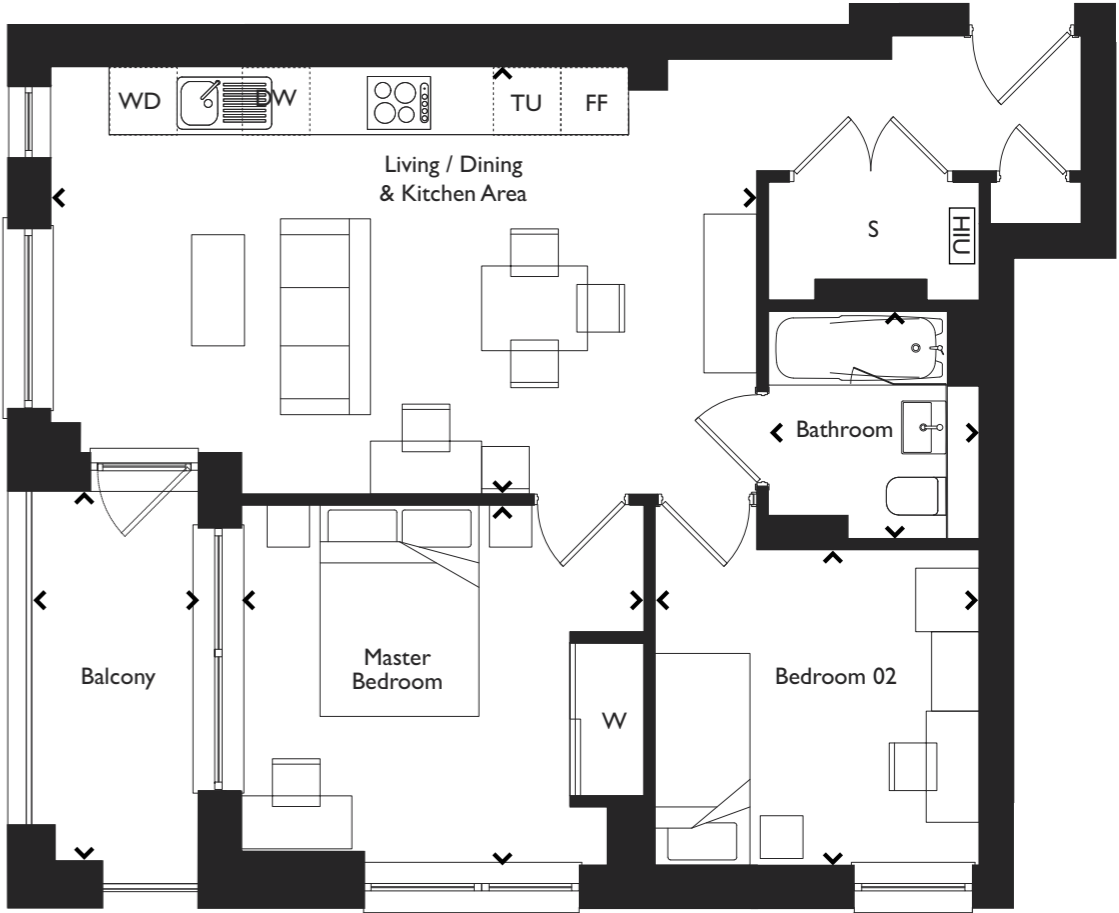
TYPE 17.1

TWO BEDROOM

2 bedroom - 3 person
Shared Ownership
Level 2 and Level 4

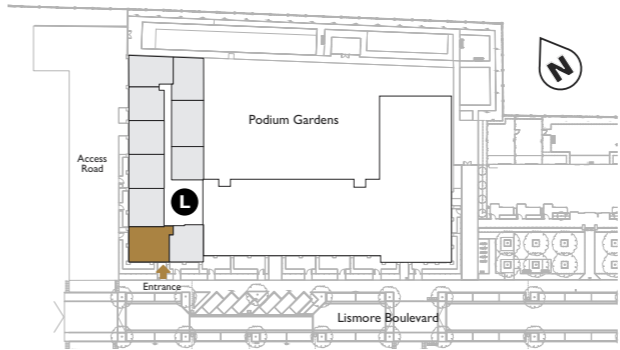
Reference:
Flat No. 4 - Level 2
Flat No. 24 - Level 4

Key:
FF Fridge Freezer
DW Dishwasher
WD Washer Dryer
HIU Heat Interface Unit
TU Tall Unit
W Wardrobe
S Storage
◀ ▶ Measurement points

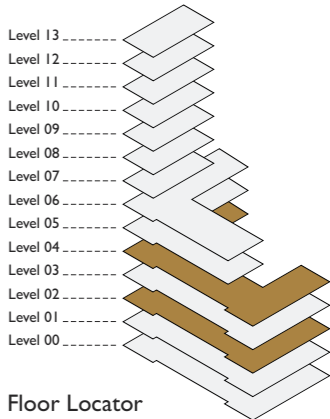


Gross Internal Area	61.39m ²	660.8ft ²
Living / Dining & Kitchen Area	6.67m x 4.04m	21.88ft x 13.25ft
Master Bedroom	3.81m x 3.40m	12.5ft x 11.15ft
Bedroom 02	3.06m x 2.98m	10.03ft x 9.77ft
Bathroom	2.15m x 2.00m	7.05ft x 6.56ft
Storage	2.00m x 1.12m	6.56ft x 3.67ft

Balcony (not included in GIA)	6m ²	64.5ft ²
-------------------------------	-----------------	---------------------



Key Plan



Floor Locator

Apartment layouts provide approximate measurements only. Dimensions, which are taken from the indicated points of measurement, are for guidance only and are not intended to be used for carpet sizes, appliance space or items of furniture. Apartment areas are provided as gross internal areas and may vary. Bathroom and kitchen layouts are indicative only and are subject to change. Wardrobe size and position may vary. Ceiling height may vary within select apartments, please speak to the sales team for more information. All balcony dimensions and areas are approximate and may vary. The information contained within this document does not constitute part of any offer, contract or warranty. Whilst the plans have been prepared with all due care for the convenience of the intending purchaser, the information contained herein is a preliminary guide only.

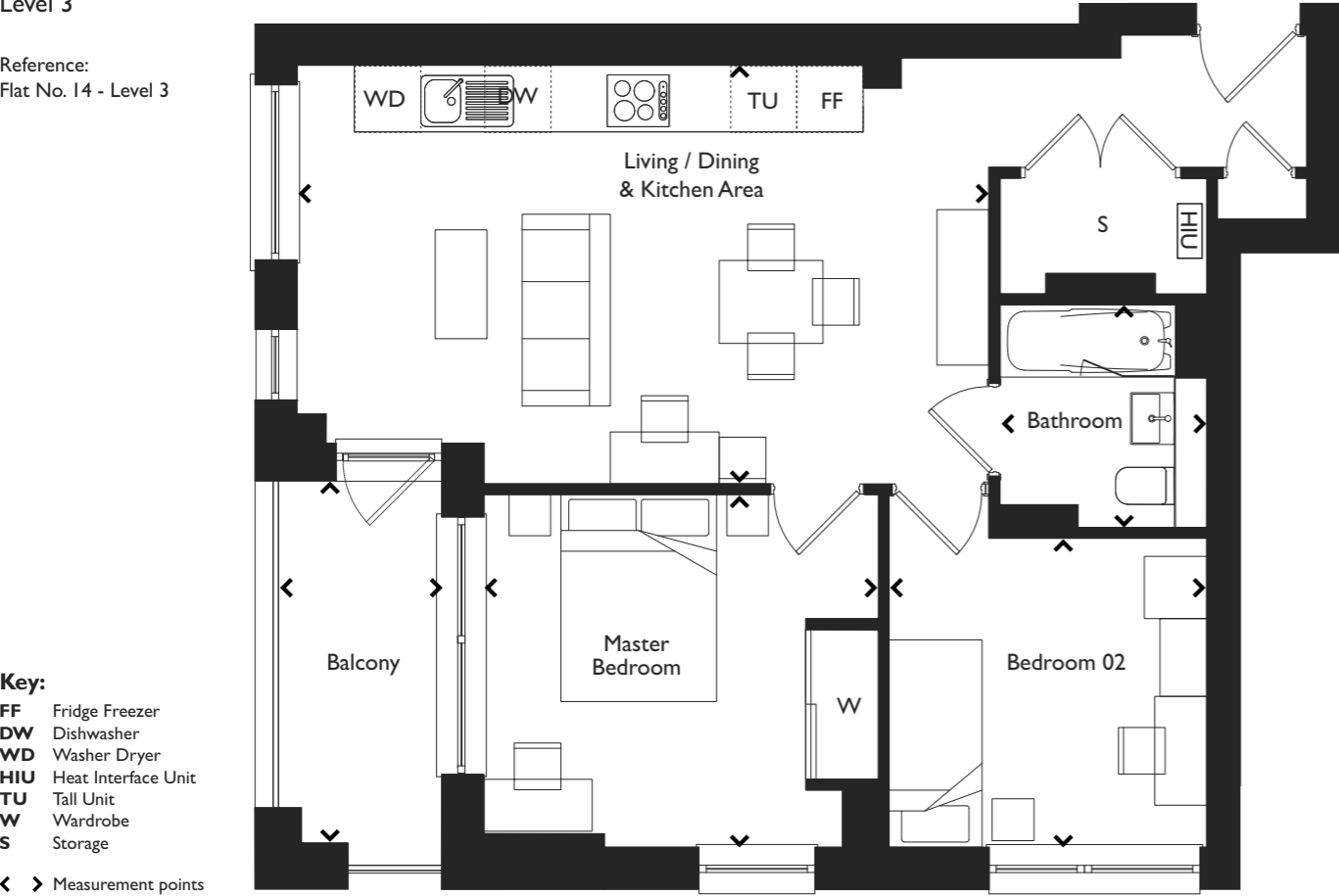
BLOCK H

TYPE 17.2

TWO BEDROOM

2 bedroom - 3 person
Shared Ownership
Level 3

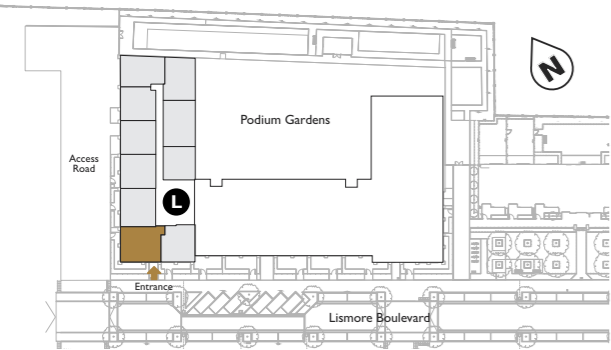
Reference:
Flat No. 14 - Level 3



- Key:**
- FF Fridge Freezer
 - DW Dishwasher
 - WD Washer Dryer
 - HIU Heat Interface Unit
 - TU Tall Unit
 - W Wardrobe
 - S Storage

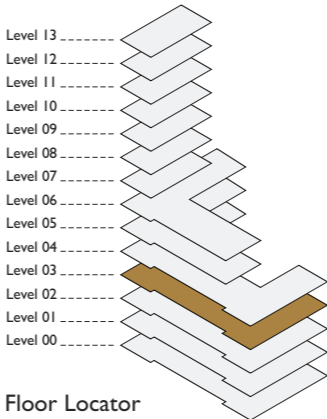
◀ ▶ Measurement points

Gross Internal Area	61.39m ²	660.8ft ²
Living / Dining & Kitchen Area	6.67m x 4.04m	21.88ft x 13.25ft
Master Bedroom	3.81m x 3.40m	12.5ft x 11.15ft
Bedroom 02	3.06m x 2.98m	10.03ft x 9.77ft
Bathroom	2.15m x 2.00m	7.05ft x 6.56ft
Storage	2.00m x 1.12m	6.56ft x 3.67ft
Balcony (not included in GIA)	6m²	64.5ft²



L Lift & Stairs

Key Plan



Floor Locator

Apartment layouts provide approximate measurements only. Dimensions, which are taken from the indicated points of measurement, are for guidance only and are not intended to be used for carpet sizes, appliance space or items of furniture. Apartment areas are provided as gross internal areas and may vary. Bathroom and kitchen layouts are indicative only and are subject to change. Wardrobe size and position may vary. Ceiling height may vary within select apartments, please speak to the sales team for more information. All balcony dimensions and areas are approximate and may vary. The information contained within this document does not constitute part of any offer, contract or warranty. Whilst the plans have been prepared with all due care for the convenience of the intending purchaser, the information contained herein is a preliminary guide only.

BLOCK H

TYPE 18

ONE BEDROOM

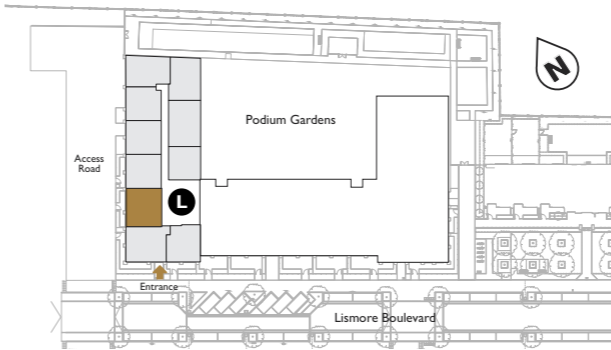
1 bedroom - 2 person
Shared Ownership
Level 5 to Level 13

Reference:
Flat No. 35 - Level 5
Flat No. 45 - Level 6
Flat No. 55 - Level 7
Flat No. 60 - Level 8
Flat No. 65 - Level 9
Flat No. 70 - Level 10
Flat No. 75 - Level 11
Flat No. 80 - Level 12
Flat No. 85 - Level 13

- Key:**
- FF Fridge Freezer
 - DW Dishwasher
 - WD Washer Dryer
 - HIU Heat Interface Unit
 - W Wardrobe
 - S Storage

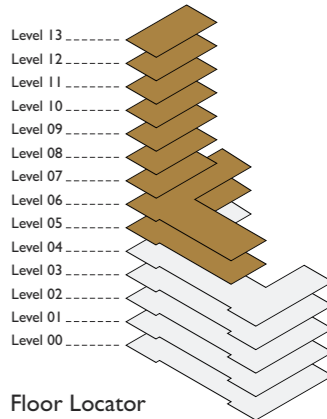
◀ ▶ Measurement points

Gross Internal Area	57.75m ²	621.6ft ²
Living / Dining & Kitchen Area	6.38m x 5.75m	20.93ft x 18.86ft
Bedroom	3.97m x 3.56m	13.02ft x 11.67ft
Bathroom	2.15m x 2.00m	7.05ft x 6.56ft
Storage	1.66m x 1.24m	5.44ft x 4.06ft
Balcony (not included in GIA)	4.8m²	51.6ft²



L Lift & Stairs

Key Plan



Floor Locator

Apartment layouts provide approximate measurements only. Dimensions, which are taken from the indicated points of measurement, are for guidance only and are not intended to be used for carpet sizes, appliance space or items of furniture. Apartment areas are provided as gross internal areas and may vary. Bathroom and kitchen layouts are indicative only and are subject to change. Wardrobe size and position may vary. Ceiling height may vary within select apartments, please speak to the sales team for more information. All balcony dimensions and areas are approximate and may vary. The information contained within this document does not constitute part of any offer, contract or warranty. Whilst the plans have been prepared with all due care for the convenience of the intending purchaser, the information contained herein is a preliminary guide only.

BLOCK H

TYPE 18.1

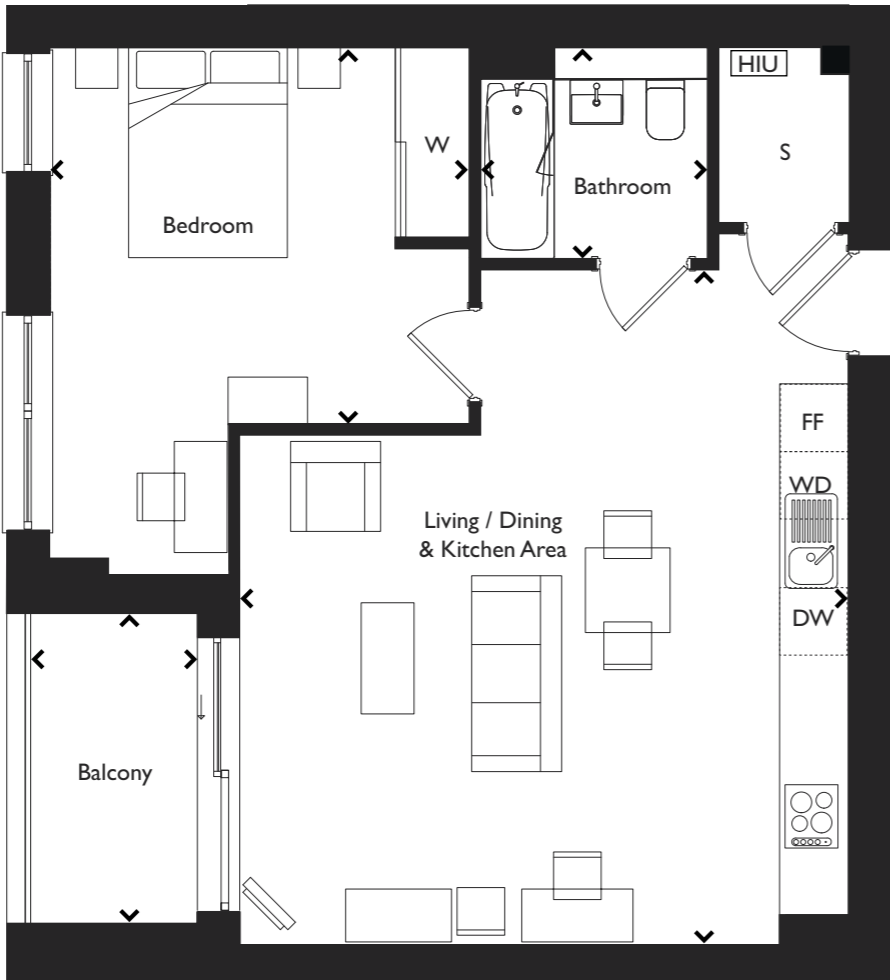
ONE BEDROOM

1 bedroom - 2 person
Shared Ownership
Level 2 and Level 4

Reference:
Flat No. 5 - Level 2
Flat No. 25 - Level 4

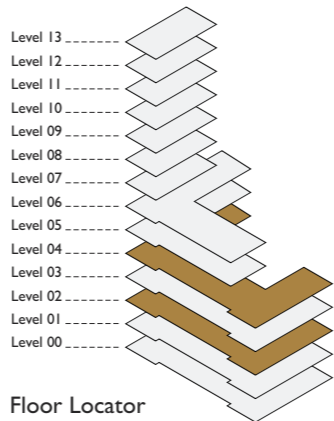
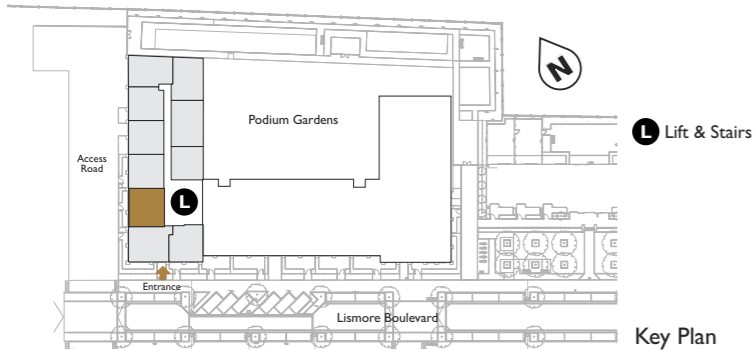
- Key:**
- FF** Fridge Freezer
 - DW** Dishwasher
 - WD** Washer Dryer
 - HIU** Heat Interface Unit
 - W** Wardrobe
 - S** Storage

◀ ▶ Measurement points



Gross Internal Area	57.75m ²	621.6ft ²
Living / Dining & Kitchen Area	6.38m x 5.75m	20.93ft x 18.86ft
Bedroom	3.97m x 3.56m	13.02ft x 11.67ft
Bathroom	2.15m x 2.00m	7.05ft x 6.56ft
Storage	1.66m x 1.24m	5.44ft x 4.06ft

Balcony (not included in GIA)	4.8m²	51.6ft²
--------------------------------------	-------------------------	---------------------------



Apartment layouts provide approximate measurements only. Dimensions, which are taken from the indicated points of measurement, are for guidance only and are not intended to be used for carpet sizes, appliance space or items of furniture. Apartment areas are provided as gross internal areas and may vary. Bathroom and kitchen layouts are indicative only and are subject to change. Wardrobe size and position may vary. Ceiling height may vary within select apartments, please speak to the sales team for more information. All balcony dimensions and areas are approximate and may vary. The information contained within this document does not constitute part of any offer, contract or warranty. Whilst the plans have been prepared with all due care for the convenience of the intending purchaser, the information contained herein is a preliminary guide only.

TYPE 18.2

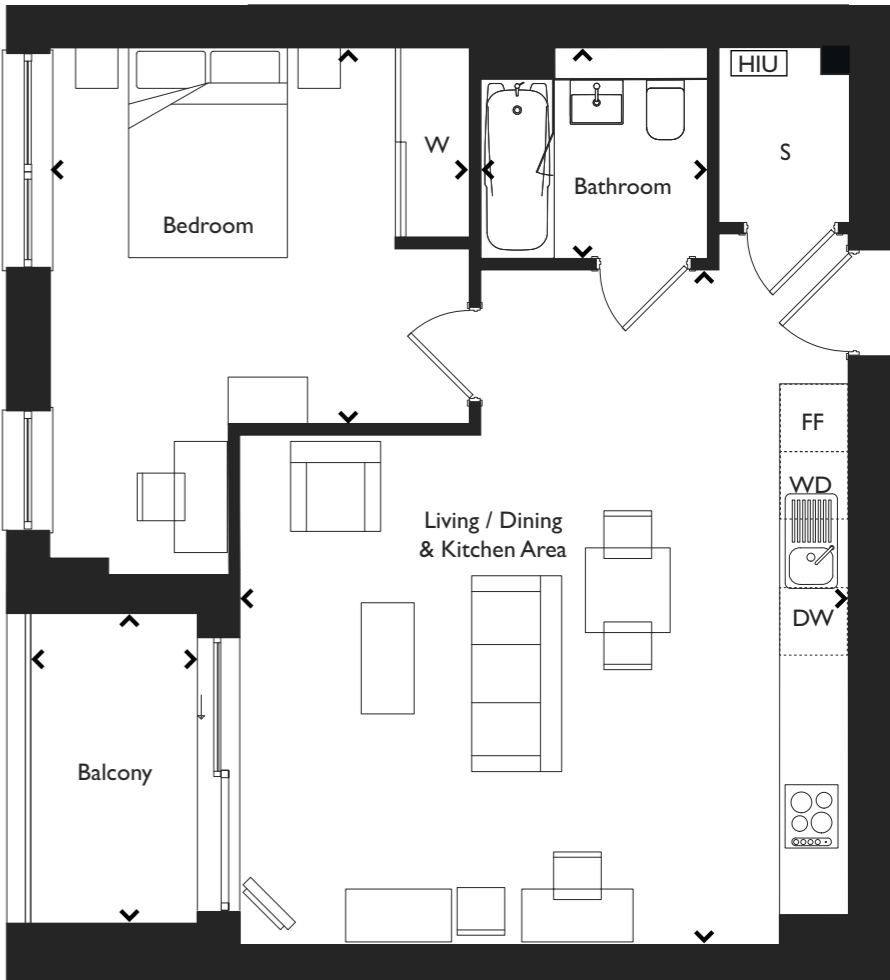
ONE BEDROOM

1 bedroom - 2 person
Shared Ownership
Level 3

Reference:
Flat No. 15 - Level 3

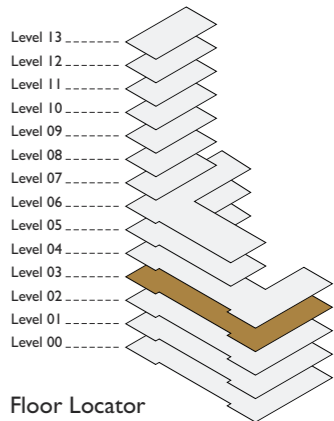
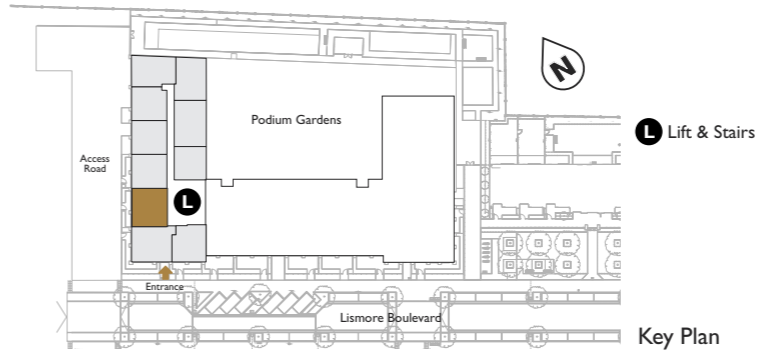
- Key:**
- FF** Fridge Freezer
 - DW** Dishwasher
 - WD** Washer Dryer
 - HIU** Heat Interface Unit
 - W** Wardrobe
 - S** Storage

◀ ▶ Measurement points



Gross Internal Area	57.75m ²	621.6ft ²
Living / Dining & Kitchen Area	6.38m x 5.75m	20.93ft x 18.86ft
Bedroom	3.97m x 3.56m	13.02ft x 11.67ft
Bathroom	2.15m x 2.00m	7.05ft x 6.56ft
Storage	1.66m x 1.24m	5.44ft x 4.06ft

Balcony (not included in GIA)	4.8m²	51.6ft²
--------------------------------------	-------------------------	---------------------------



Apartment layouts provide approximate measurements only. Dimensions, which are taken from the indicated points of measurement, are for guidance only and are not intended to be used for carpet sizes, appliance space or items of furniture. Apartment areas are provided as gross internal areas and may vary. Bathroom and kitchen layouts are indicative only and are subject to change. Wardrobe size and position may vary. Ceiling height may vary within select apartments, please speak to the sales team for more information. All balcony dimensions and areas are approximate and may vary. The information contained within this document does not constitute part of any offer, contract or warranty. Whilst the plans have been prepared with all due care for the convenience of the intending purchaser, the information contained herein is a preliminary guide only.

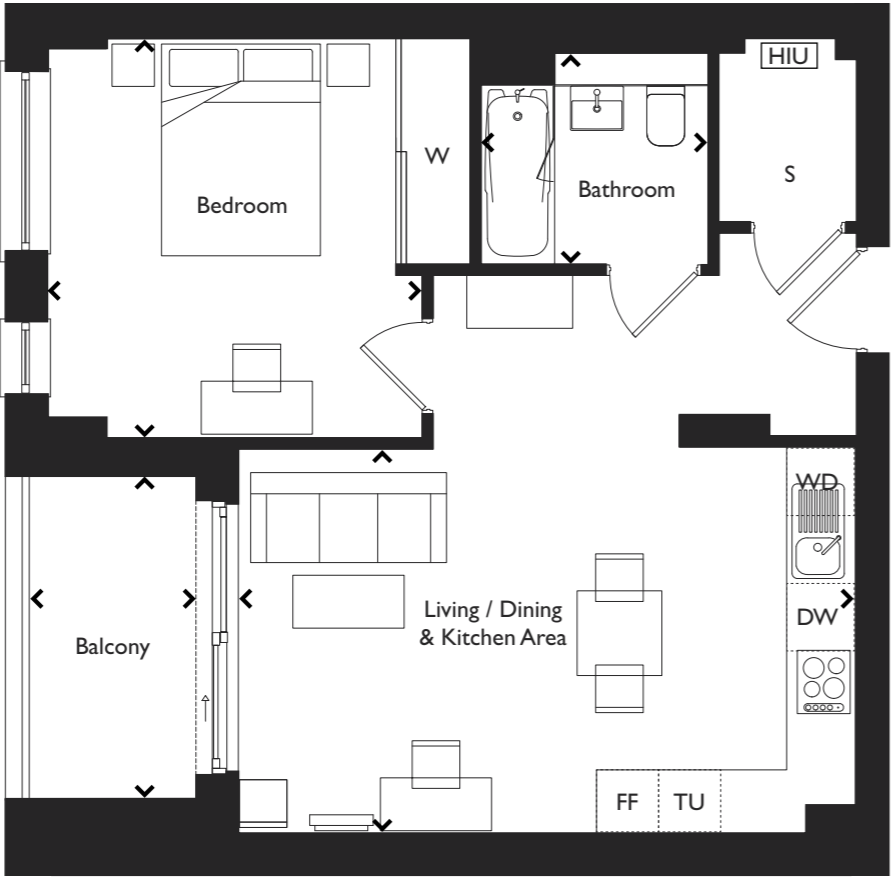
TYPE 19

ONE BEDROOM

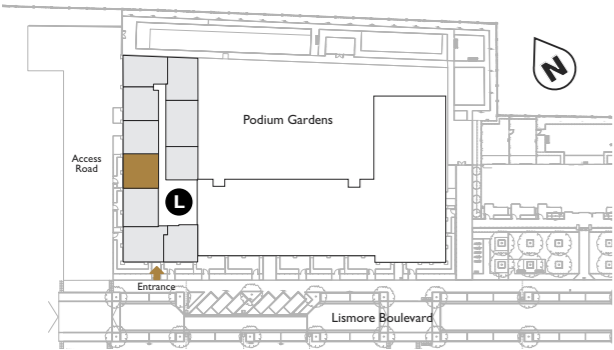
1 bedroom - 2 person
Shared Ownership
Level 2 and Level 4

Reference:
Flat No. 6 - Level 2
Flat No. 26 - Level 4

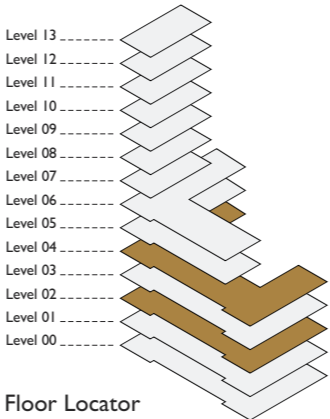
- Key:**
- FF Fridge Freezer
 - DW Dishwasher
 - WD Washer Dryer
 - HIU Heat Interface Unit
 - TU Tall Unit
 - W Wardrobe
 - S Storage
- ◀ ▶ Measurement points



Gross Internal Area	50.31m ²	541.5ft ²
Living / Dining & Kitchen Area	5.83m x 3.63m	19.12ft x 11.90ft
Bedroom	3.77m x 3.53m	12.36ft x 11.58ft
Bathroom	2.15m x 2.00m	7.05ft x 6.56ft
Storage	1.60m x 1.30m	5.25ft x 4.26ft
Balcony (not included in GIA)	5m²	53.8ft²



Key Plan



Floor Locator

Apartment layouts provide approximate measurements only. Dimensions, which are taken from the indicated points of measurement, are for guidance only and are not intended to be used for carpet sizes, appliance space or items of furniture. Apartment areas are provided as gross internal areas and may vary. Bathroom and kitchen layouts are indicative only and are subject to change. Wardrobe size and position may vary. Ceiling height may vary within select apartments, please speak to the sales team for more information. All balcony dimensions and areas are approximate and may vary. The information contained within this document does not constitute part of any offer, contract or warranty. Whilst the plans have been prepared with all due care for the convenience of the intending purchaser, the information contained herein is a preliminary guide only.

BLOCK H

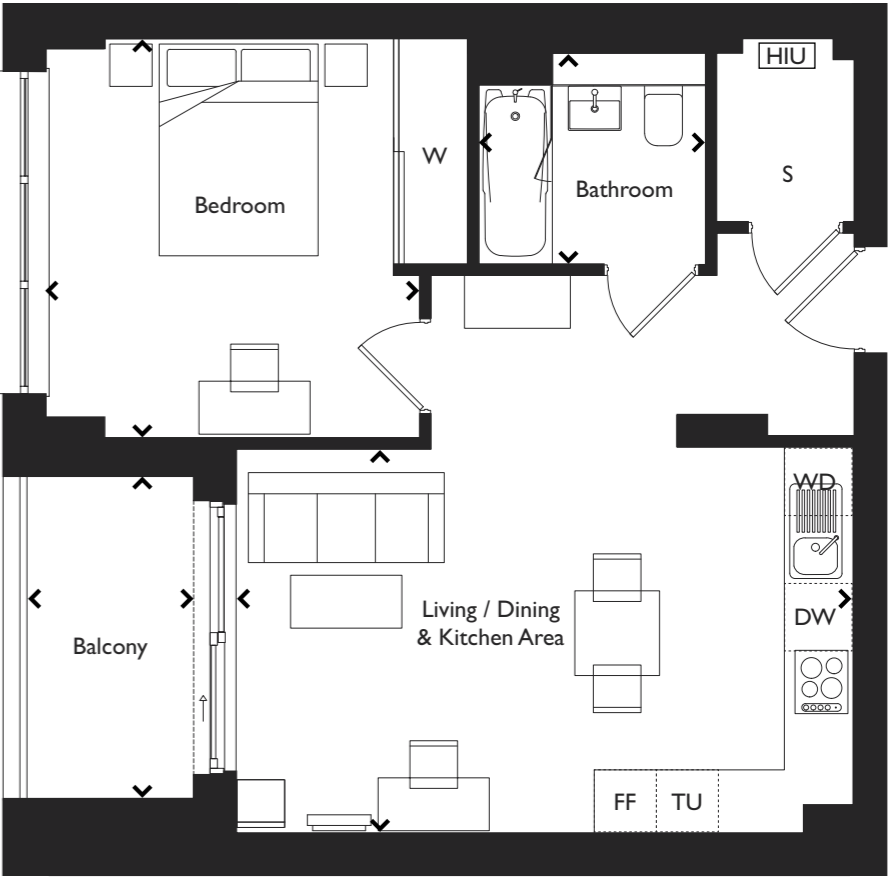
TYPE 19.1

ONE BEDROOM

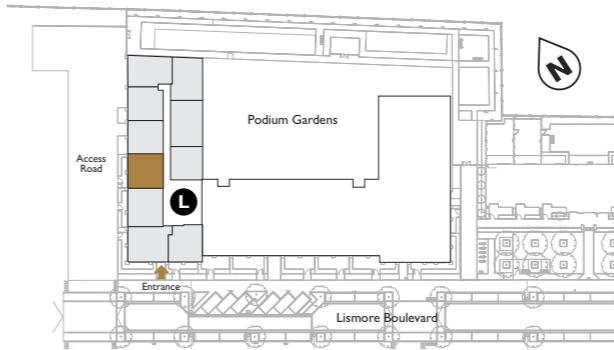
1 bedroom - 2 person
Shared Ownership
Level 5 and Level 6

Reference:
Flat No. 36 - Level 5
Flat No. 46 - Level 6

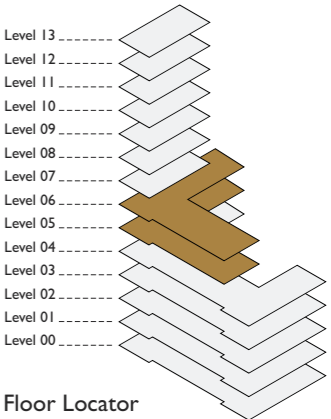
- Key:**
- FF Fridge Freezer
 - DW Dishwasher
 - WD Washer Dryer
 - HIU Heat Interface Unit
 - TU Tall Unit
 - W Wardrobe
 - S Storage
- ◀ ▶ Measurement points



Gross Internal Area	50.31m ²	541.5ft ²
Living / Dining & Kitchen Area	5.83m x 3.63m	19.12ft x 11.90ft
Bedroom	3.77m x 3.53m	12.36ft x 11.58ft
Bathroom	2.15m x 2.00m	7.05ft x 6.56ft
Storage	1.60m x 1.30m	5.25ft x 4.26ft
Balcony (not included in GIA)	5m²	53.8ft²



Key Plan



Floor Locator

Apartment layouts provide approximate measurements only. Dimensions, which are taken from the indicated points of measurement, are for guidance only and are not intended to be used for carpet sizes, appliance space or items of furniture. Apartment areas are provided as gross internal areas and may vary. Bathroom and kitchen layouts are indicative only and are subject to change. Wardrobe size and position may vary. Ceiling height may vary within select apartments, please speak to the sales team for more information. All balcony dimensions and areas are approximate and may vary. The information contained within this document does not constitute part of any offer, contract or warranty. Whilst the plans have been prepared with all due care for the convenience of the intending purchaser, the information contained herein is a preliminary guide only.

BLOCK H

TYPE 19.2

ONE BEDROOM

1 bedroom - 2 person
Shared Ownership
Level 3

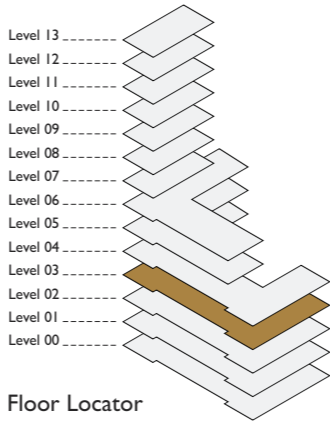
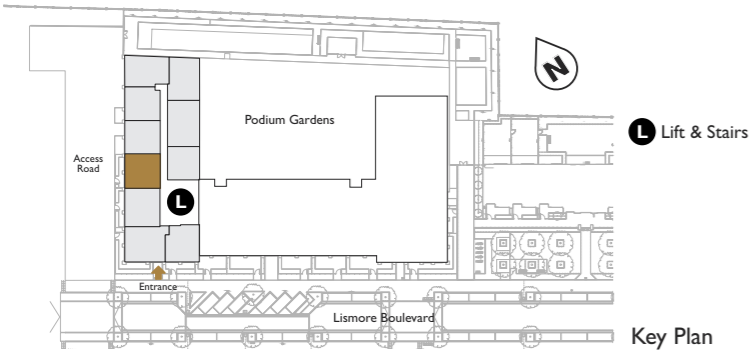
Reference:
Flat No. 16 - Level 3



- Key:**
- FF Fridge Freezer
 - DW Dishwasher
 - WD Washer Dryer
 - HIU Heat Interface Unit
 - TU Tall Unit
 - W Wardrobe
 - S Storage
 - ◀ ▶ Measurement points

Gross Internal Area	50.31m ²	541.5ft ²
Living / Dining & Kitchen Area	5.83m x 3.63m	19.12ft x 11.90ft
Bedroom	3.77m x 3.53m	12.36ft x 11.58ft
Bathroom	2.15m x 2.00m	7.05ft x 6.56ft
Storage	1.60m x 1.30m	5.25ft x 4.26ft

Balcony (not included in GIA) 5m² 53.8ft²



Apartment layouts provide approximate measurements only. Dimensions, which are taken from the indicated points of measurement, are for guidance only and are not intended to be used for carpet sizes, appliance space or items of furniture. Apartment areas are provided as gross internal areas and may vary. Bathroom and kitchen layouts are indicative only and are subject to change. Wardrobe size and position may vary. Ceiling height may vary within select apartments, please speak to the sales team for more information. All balcony dimensions and areas are approximate and may vary. The information contained within this document does not constitute part of any offer, contract or warranty. Whilst the plans have been prepared with all due care for the convenience of the intending purchaser, the information contained herein is a preliminary guide only.

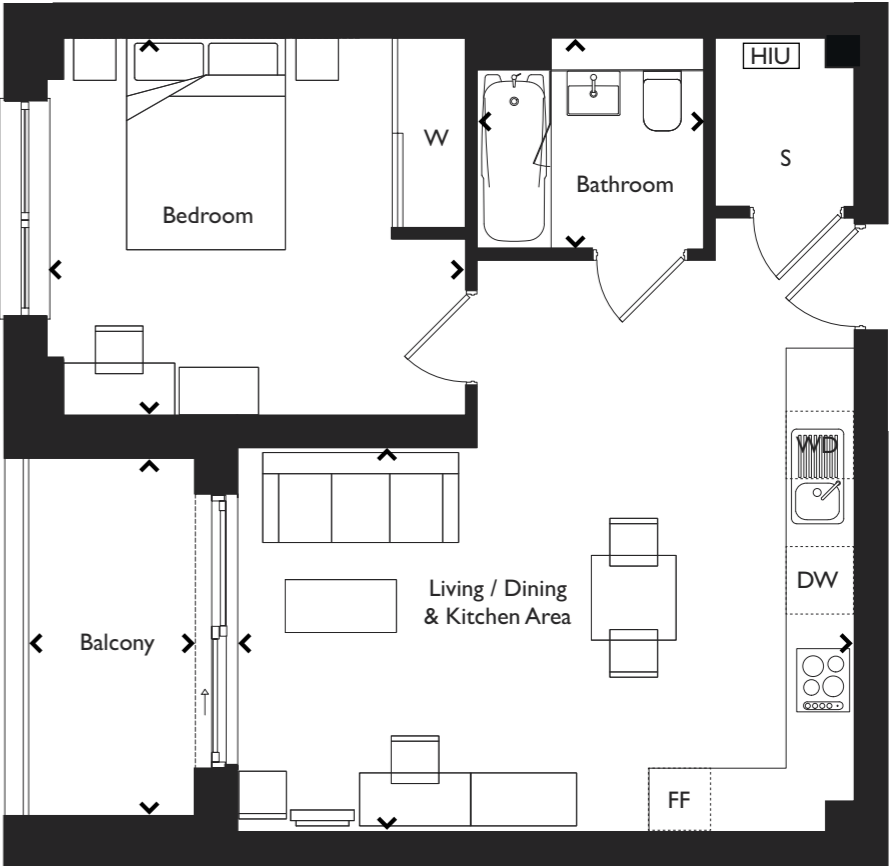
BLOCK H

TYPE 20

ONE BEDROOM

1 bedroom - 2 person
Shared Ownership
Level 2 to Level 6

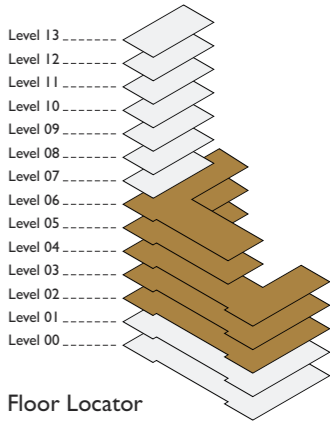
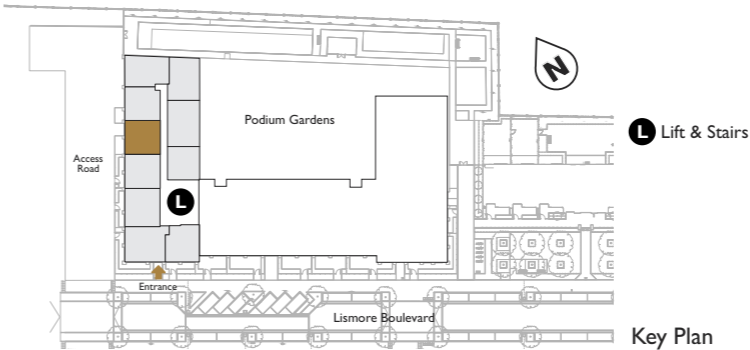
Reference:
Flat No. 7 - Level 2
Flat No. 17 - Level 3
Flat No. 27 - Level 4
Flat No. 37 - Level 5
Flat No. 47 - Level 6



- Key:**
- FF Fridge Freezer
 - DW Dishwasher
 - WD Washer Dryer
 - HIU Heat Interface Unit
 - W Wardrobe
 - S Storage
 - ◀ ▶ Measurement points

Gross Internal Area	50.26m ²	541ft ²
Living / Dining & Kitchen Area	5.83m x 3.63m	19.12ft x 11.90ft
Bedroom	3.96m x 3.57m	12.99ft x 11.71ft
Bathroom	2.15m x 2.00m	7.05ft x 6.56ft
Storage	1.60m x 1.33m	5.25ft x 4.36ft

Balcony (not included in GIA) 5.5m² 59.2ft²



Apartment layouts provide approximate measurements only. Dimensions, which are taken from the indicated points of measurement, are for guidance only and are not intended to be used for carpet sizes, appliance space or items of furniture. Apartment areas are provided as gross internal areas and may vary. Bathroom and kitchen layouts are indicative only and are subject to change. Wardrobe size and position may vary. Ceiling height may vary within select apartments, please speak to the sales team for more information. All balcony dimensions and areas are approximate and may vary. The information contained within this document does not constitute part of any offer, contract or warranty. Whilst the plans have been prepared with all due care for the convenience of the intending purchaser, the information contained herein is a preliminary guide only.

BLOCK H

TYPE 21

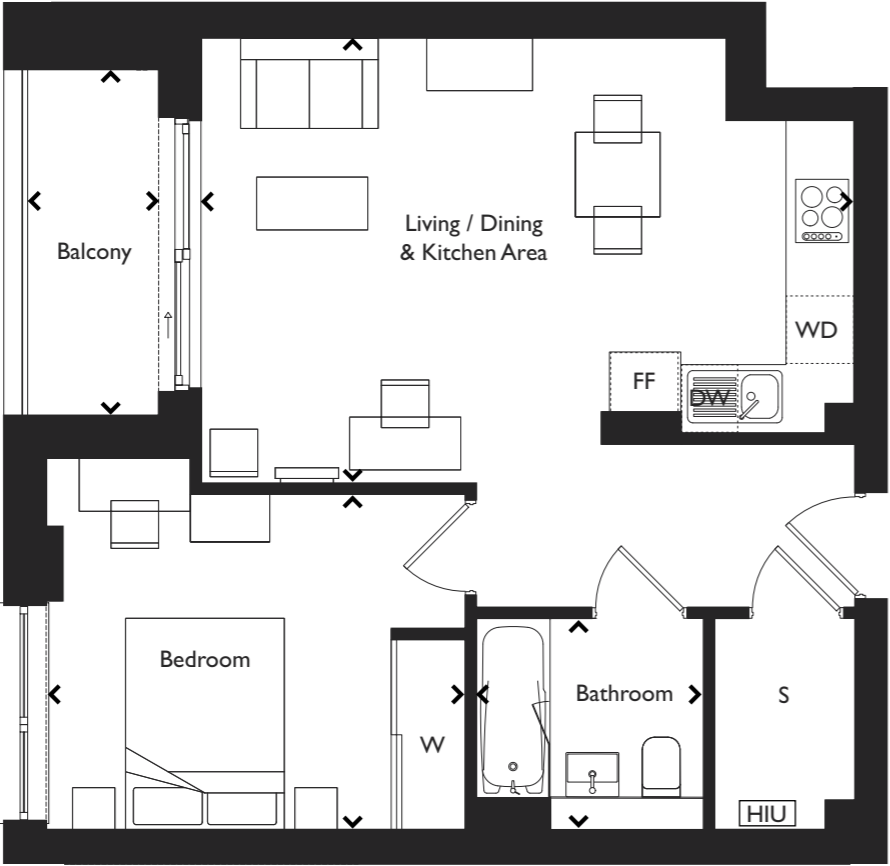
ONE BEDROOM

1 bedroom - 2 person
Shared Ownership
Level 2 to Level 6

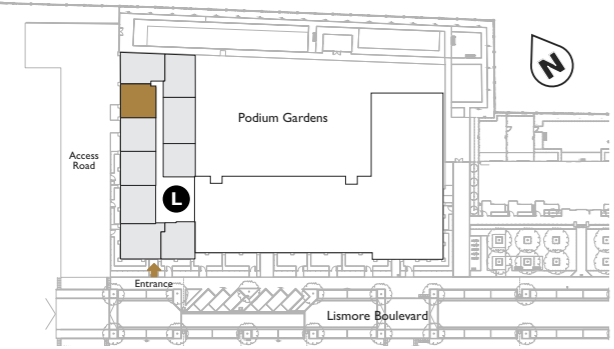
Reference:
Flat No. 8 - Level 2
Flat No. 18 - Level 3
Flat No. 28 - Level 4
Flat No. 38 - Level 5
Flat No. 48 - Level 6

Key:
FF Fridge Freezer
DW Dishwasher
WD Washer Dryer
HIU Heat Interface Unit
W Wardrobe
S Storage

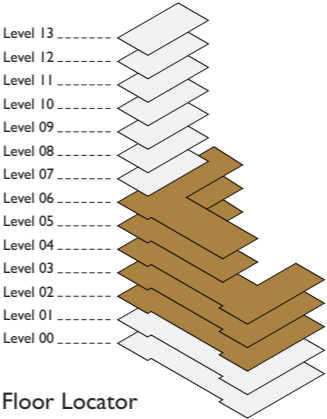
◀ ▶ Measurement points



Gross Internal Area	50.46m ²	543.1ft ²
Living / Dining & Kitchen Area	6.16m x 4.21m	20.20ft x 13.81ft
Bedroom	3.96m x 3.51m	12.99ft x 11.51ft
Bathroom	2.15m x 2.00m	7.05ft x 6.56ft
Storage	2.00m x 1.33m	6.56ft x 4.36ft
Balcony (not included in GIA)	4.3m²	46.2ft²



Key Plan



Floor Locator

Apartment layouts provide approximate measurements only. Dimensions, which are taken from the indicated points of measurement, are for guidance only and are not intended to be used for carpet sizes, appliance space or items of furniture. Apartment areas are provided as gross internal areas and may vary. Bathroom and kitchen layouts are indicative only and are subject to change. Wardrobe size and position may vary. Ceiling height may vary within select apartments, please speak to the sales team for more information. All balcony dimensions and areas are approximate and may vary. The information contained within this document does not constitute part of any offer, contract or warranty. Whilst the plans have been prepared with all due care for the convenience of the intending purchaser, the information contained herein is a preliminary guide only.

TYPE 22

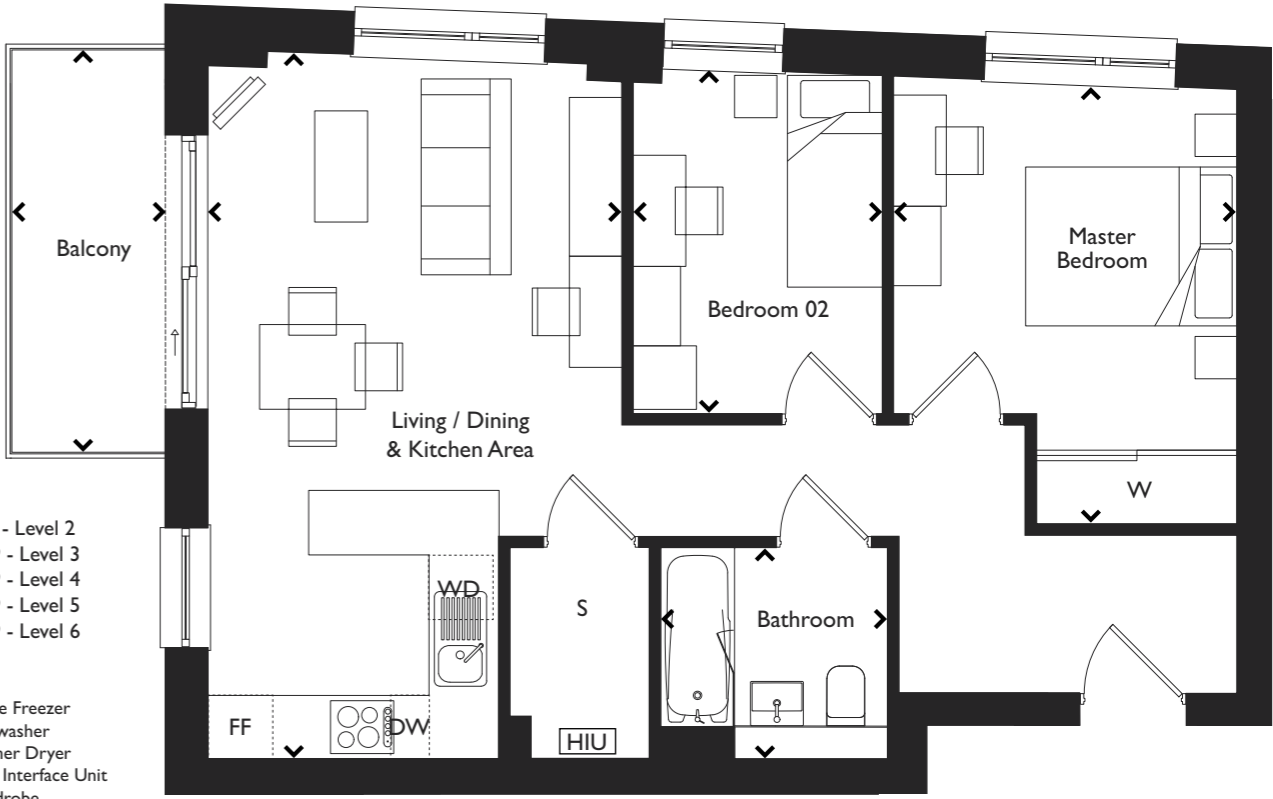
TWO BEDROOM

2 bedroom - 3 person
Shared Ownership
Level 2 to Level 6

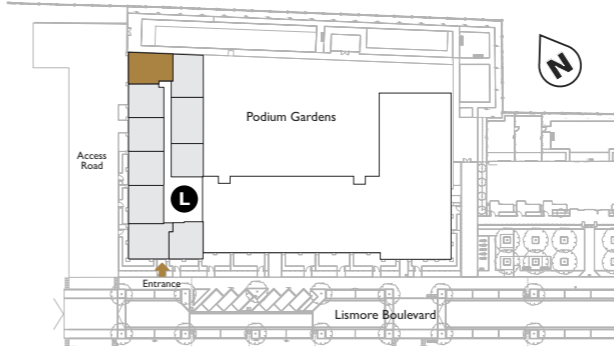
Reference:
Flat No. 9 - Level 2
Flat No. 19 - Level 3
Flat No. 29 - Level 4
Flat No. 39 - Level 5
Flat No. 49 - Level 6

Key:
FF Fridge Freezer
DW Dishwasher
WD Washer Dryer
HIU Heat Interface Unit
W Wardrobe
S Storage

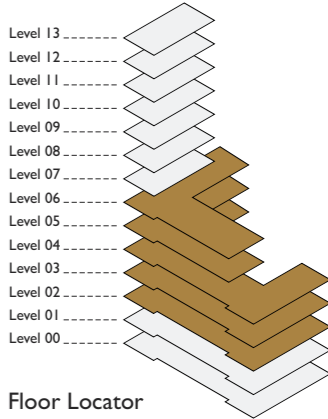
◀ ▶ Measurement points



Gross Internal Area	61.43m ²	661.2ft ²
Living / Dining & Kitchen Area	6.68m x 3.91m	21.91ft x 12.82ft
Master Bedroom	4.11m x 3.25m	13.48ft x 10.66ft
Bedroom 02	3.25m x 2.36m	10.66ft x 7.74ft
Bathroom	2.15m x 2.00m	7.05ft x 6.56ft
Storage	1.32m x 2.00m	4.33ft x 6.56ft
Balcony (not included in GIA)	6.2m²	66.7ft²



Key Plan



Floor Locator

Apartment layouts provide approximate measurements only. Dimensions, which are taken from the indicated points of measurement, are for guidance only and are not intended to be used for carpet sizes, appliance space or items of furniture. Apartment areas are provided as gross internal areas and may vary. Bathroom and kitchen layouts are indicative only and are subject to change. Wardrobe size and position may vary. Ceiling height may vary within select apartments, please speak to the sales team for more information. All balcony dimensions and areas are approximate and may vary. The information contained within this document does not constitute part of any offer, contract or warranty. Whilst the plans have been prepared with all due care for the convenience of the intending purchaser, the information contained herein is a preliminary guide only.

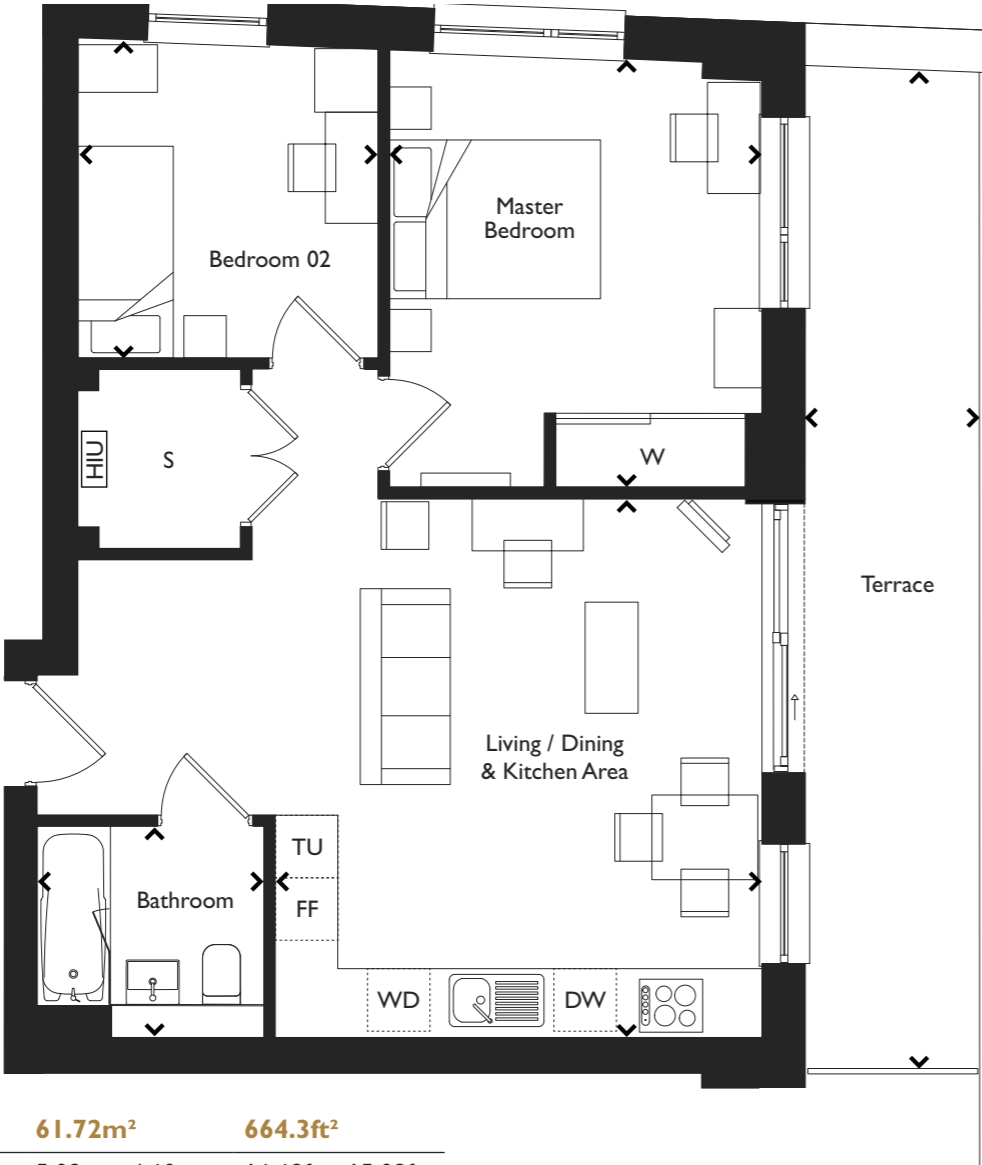
TYPE 23

TWO BEDROOM

2 bedroom - 3 person
Shared Ownership
Level 2 Only

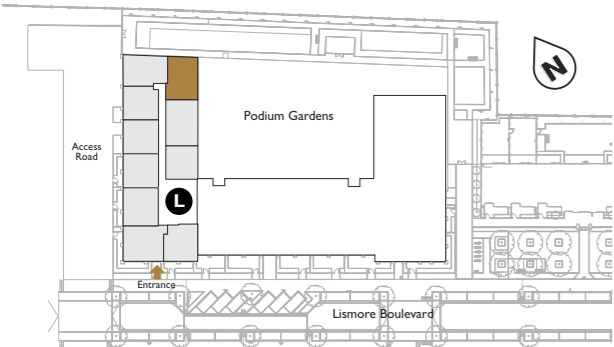
Reference:
Flat No. 10 - Level 2

- Key:
- FF Fridge Freezer
 - DW Dishwasher
 - WD Washer Dryer
 - HIU Heat Interface Unit
 - TU Tall Unit
 - W Wardrobe
 - S Storage
 - < > Measurement points



Gross Internal Area	61.72m ²	664.3ft ²
Living / Dining & Kitchen Area	5.09m x 4.60m	16.69ft x 15.09ft
Master Bedroom	4.01m x 3.52m	13.15ft x 11.54ft
Bedroom 02	3.03m x 2.84m	9.94ft x 9.31ft
Bathroom	2.15m x 2.00m	7.05ft x 6.56ft
Storage	1.7m x 1.54m	5.57ft x 5.05ft

Terrace (not included in GIA) 16m² 172.2ft²



Lift & Stairs

Key Plan

Apartment layouts provide approximate measurements only. Dimensions, which are taken from the indicated points of measurement, are for guidance only and are not intended to be used for carpet sizes, appliance space or items of furniture. Apartment areas are provided as gross internal areas and may vary. Bathroom and kitchen layouts are indicative only and are subject to change. Wardrobe size and position may vary. Ceiling height may vary within select apartments, please speak to the sales team for more information. All balcony dimensions and areas are approximate and may vary. The information contained within this document does not constitute part of any offer, contract or warranty. Whilst the plans have been prepared with all due care for the convenience of the intending purchaser, the information contained herein is a preliminary guide only.

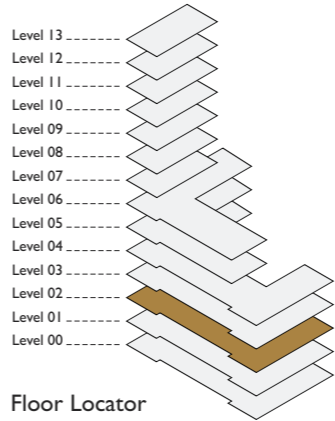
BLOCK H

TYPE 24

TWO BEDROOM

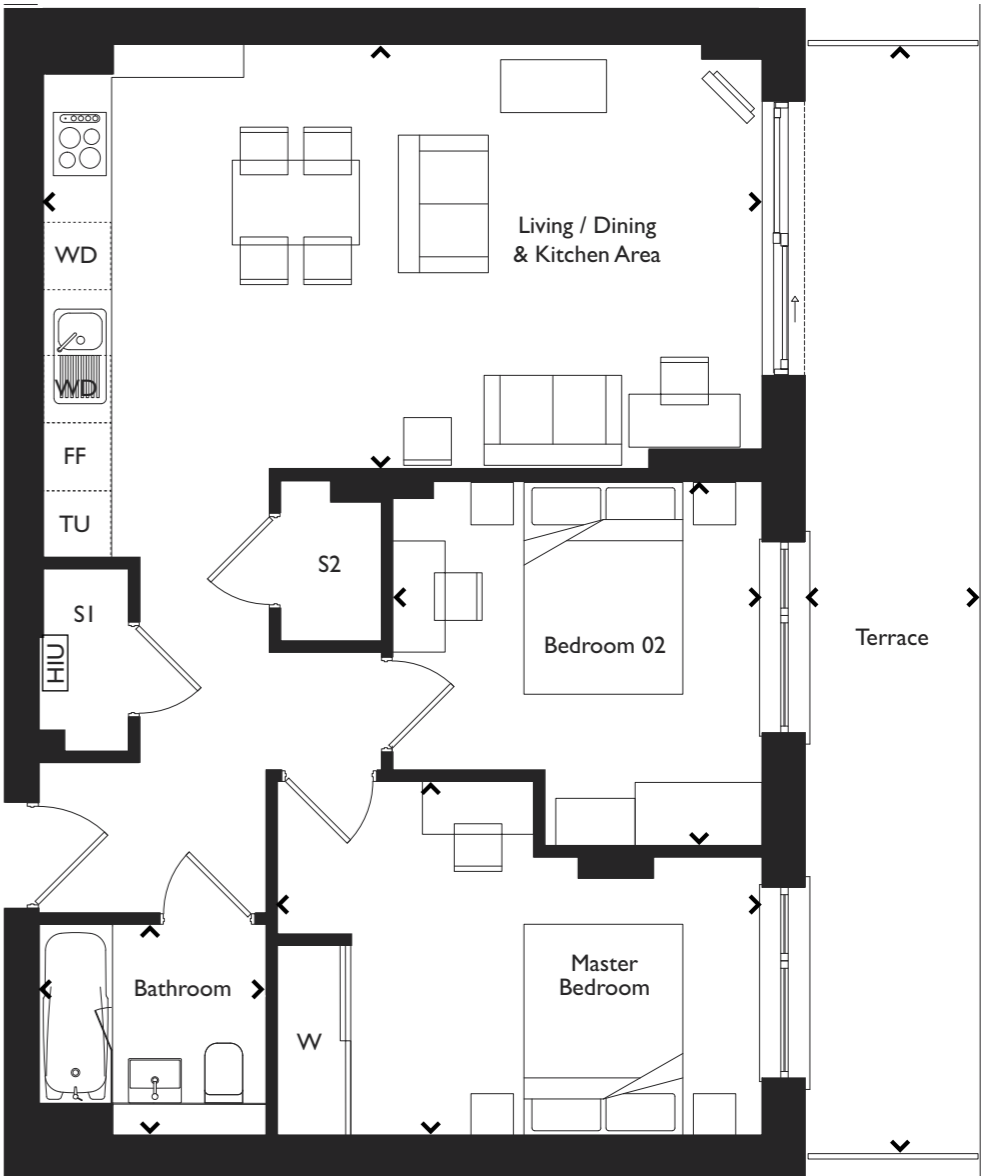
2 bedroom - 4 person
Shared Ownership
Level 2 Only

Reference:
Flat No. 11 - Level 2



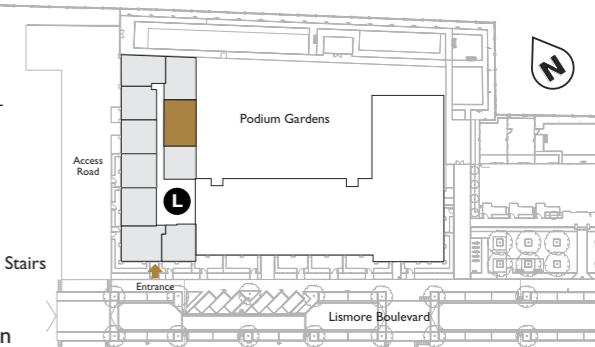
Floor Locator

- Key:
- FF Fridge Freezer
 - DW Dishwasher
 - WD Washer Dryer
 - HIU Heat Interface Unit
 - TU Tall Unit
 - W Wardrobe
 - S Storage
 - < > Measurement points



Gross Internal Area	70.16m ²	755.2ft ²
Living / Dining & Kitchen Area	6.79m x 4.01m	22.27ft x 13.15ft
Master Bedroom	4.58m x 3.35m	15.02ft x 10.99ft
Bedroom 02	3.49m x 3.43m	11.45ft x 11.25ft
Bathroom	2.15m x 2.00m	7.05ft x 6.56ft
Storage 01	1.70m x 0.83m	5.57ft x 2.72ft
Storage 02	1.52m x 0.94m	4.98ft x 3.08ft

Terrace (not included in GIA) 17m² 182.9ft²



Lift & Stairs

Key Plan

Apartment layouts provide approximate measurements only. Dimensions, which are taken from the indicated points of measurement, are for guidance only and are not intended to be used for carpet sizes, appliance space or items of furniture. Apartment areas are provided as gross internal areas and may vary. Bathroom and kitchen layouts are indicative only and are subject to change. Wardrobe size and position may vary. Ceiling height may vary within select apartments, please speak to the sales team for more information. All balcony dimensions and areas are approximate and may vary. The information contained within this document does not constitute part of any offer, contract or warranty. Whilst the plans have been prepared with all due care for the convenience of the intending purchaser, the information contained herein is a preliminary guide only.

BLOCK H

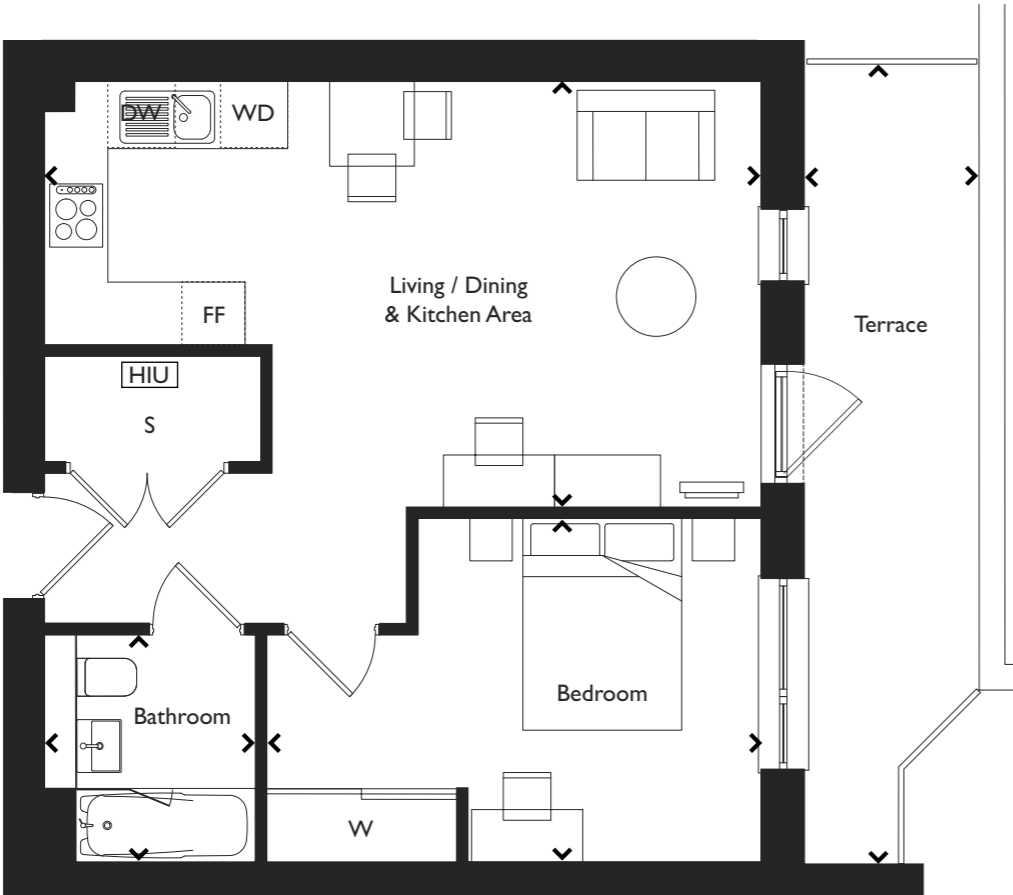
TYPE 25

ONE BEDROOM

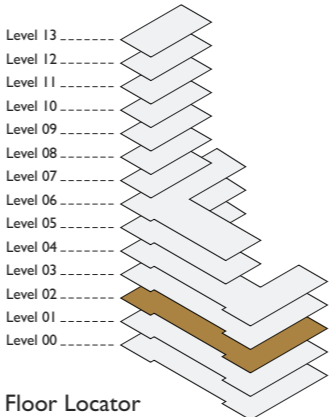
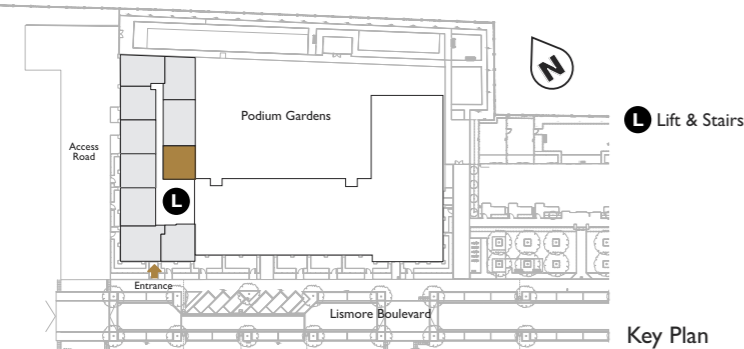
1 bedroom - 2 person
Shared Ownership
Level 2 Only

Reference:
Flat No. 12 - Level 2

Key:
FF Fridge Freezer
DW Dishwasher
WD Washer Dryer
HIU Heat Interface Unit
W Wardrobe
S Storage
◀ ▶ Measurement points



Gross Internal Area	50.07m ²	538.9ft ²
Living / Dining & Kitchen Area	6.77m x 4.02m	22.21ft x 13.18ft
Bedroom	4.67m x 3.25m	15.32ft x 10.66ft
Bathroom	2.15m x 2.00m	7.05ft x 6.56ft
Storage	2.05m x 1.00m	6.72ft x 3.28ft
Terrace (not included in GIA)	12m²	129.1ft²



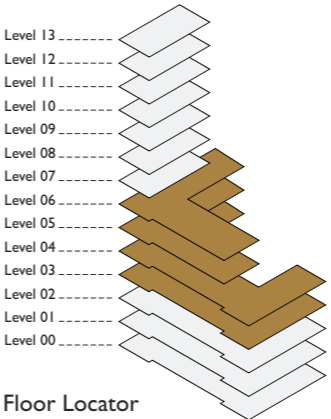
Apartment layouts provide approximate measurements only. Dimensions, which are taken from the indicated points of measurement, are for guidance only and are not intended to be used for carpet sizes, appliance space or items of furniture. Apartment areas are provided as gross internal areas and may vary. Bathroom and kitchen layouts are indicative only and are subject to change. Wardrobe size and position may vary. Ceiling height may vary within select apartments, please speak to the sales team for more information. All balcony dimensions and areas are approximate and may vary. The information contained within this document does not constitute part of any offer, contract or warranty. Whilst the plans have been prepared with all due care for the convenience of the intending purchaser, the information contained herein is a preliminary guide only.

TYPE 40

ONE BEDROOM

2 bedroom - 3 person
Shared Ownership
Level 3 to Level 6

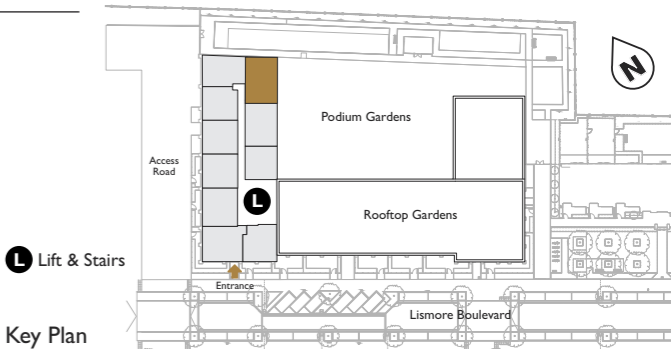
Reference:
Flat No. 20 - Level 3
Flat No. 30 - Level 4
Flat No. 40 - Level 5
Flat No. 50 - Level 6



Key:
FF Fridge Freezer
DW Dishwasher
WD Washer Dryer
HIU Heat Interface Unit
TU Tall Unit
W Wardrobe
S Storage
◀ ▶ Measurement points



Gross Internal Area	61.72m ²	664.3ft ²
Living / Dining & Kitchen Area	6.47m x 5.09m	21.22ft x 16.69ft
Master Bedroom	4.01m x 3.52m	13.15ft x 11.54ft
Bedroom 02	3.03m x 2.84m	9.94ft x 9.31ft
Bathroom	2.15m x 2.00m	7.05ft x 6.56ft
Storage	1.70m x 1.54m	5.57ft x 5.05ft
Balcony (not included in GIA)	6.5m²	69.9ft²



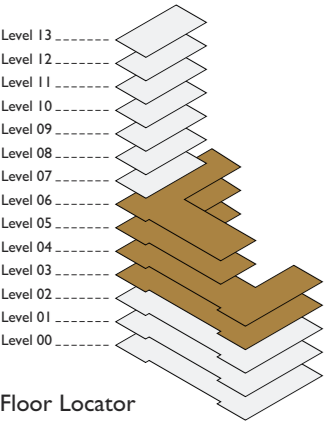
Apartment layouts provide approximate measurements only. Dimensions, which are taken from the indicated points of measurement, are for guidance only and are not intended to be used for carpet sizes, appliance space or items of furniture. Apartment areas are provided as gross internal areas and may vary. Bathroom and kitchen layouts are indicative only and are subject to change. Wardrobe size and position may vary. Ceiling height may vary within select apartments, please speak to the sales team for more information. All balcony dimensions and areas are approximate and may vary. The information contained within this document does not constitute part of any offer, contract or warranty. Whilst the plans have been prepared with all due care for the convenience of the intending purchaser, the information contained herein is a preliminary guide only.

TYPE 41

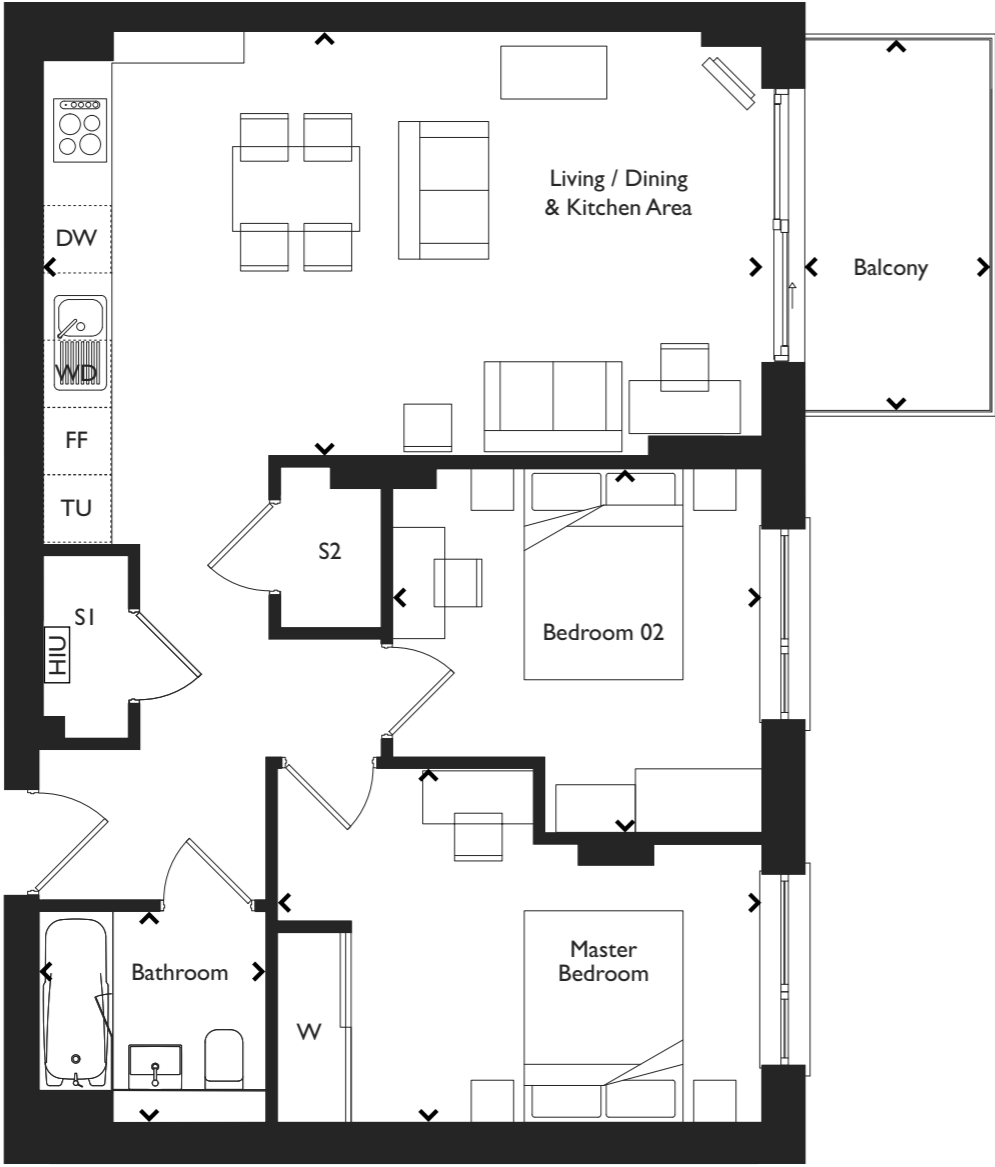
TWO BEDROOM

2 bedroom - 4 person
Shared Ownership
Level 3 to Level 6

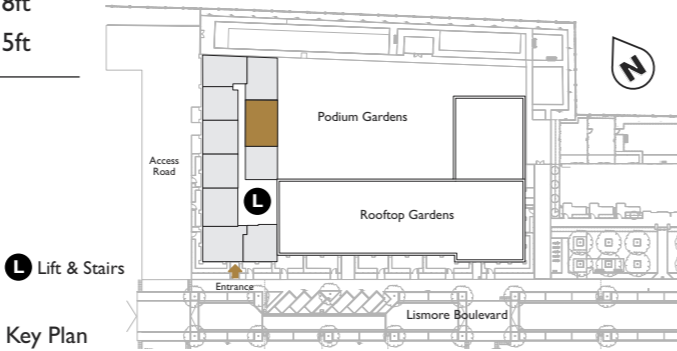
Reference:
Flat No. 21 - Level 3
Flat No. 31 - Level 4
Flat No. 41 - Level 5
Flat No. 51 - Level 6



Key:
FF Fridge Freezer
DW Dishwasher
WD Washer Dryer
HIU Heat Interface Unit
TU Tall Unit
W Wardrobe
S Storage
◀ ▶ Measurement points



Gross Internal Area	70.16m ²	755.2ft ²
Living / Dining & Kitchen Area	6.79m x 4.01m	22.27ft x 13.15ft
Master Bedroom	4.58m x 3.35m	15.02ft x 10.99ft
Bedroom 02	3.49m x 3.43m	11.45ft x 11.25ft
Bathroom	2.15m x 2.00m	7.05ft x 6.56ft
Storage 01	1.73m x 0.85m	5.67ft x 2.78ft
Storage 02	1.52m x 0.96m	4.98ft x 3.15ft
Balcony (not included in GIA)	6.5m²	69.9ft²



Apartment layouts provide approximate measurements only. Dimensions, which are taken from the indicated points of measurement, are for guidance only and are not intended to be used for carpet sizes, appliance space or items of furniture. Apartment areas are provided as gross internal areas and may vary. Bathroom and kitchen layouts are indicative only and are subject to change. Wardrobe size and position may vary. Ceiling height may vary within select apartments, please speak to the sales team for more information. All balcony dimensions and areas are approximate and may vary. The information contained within this document does not constitute part of any offer, contract or warranty. Whilst the plans have been prepared with all due care for the convenience of the intending purchaser, the information contained herein is a preliminary guide only.

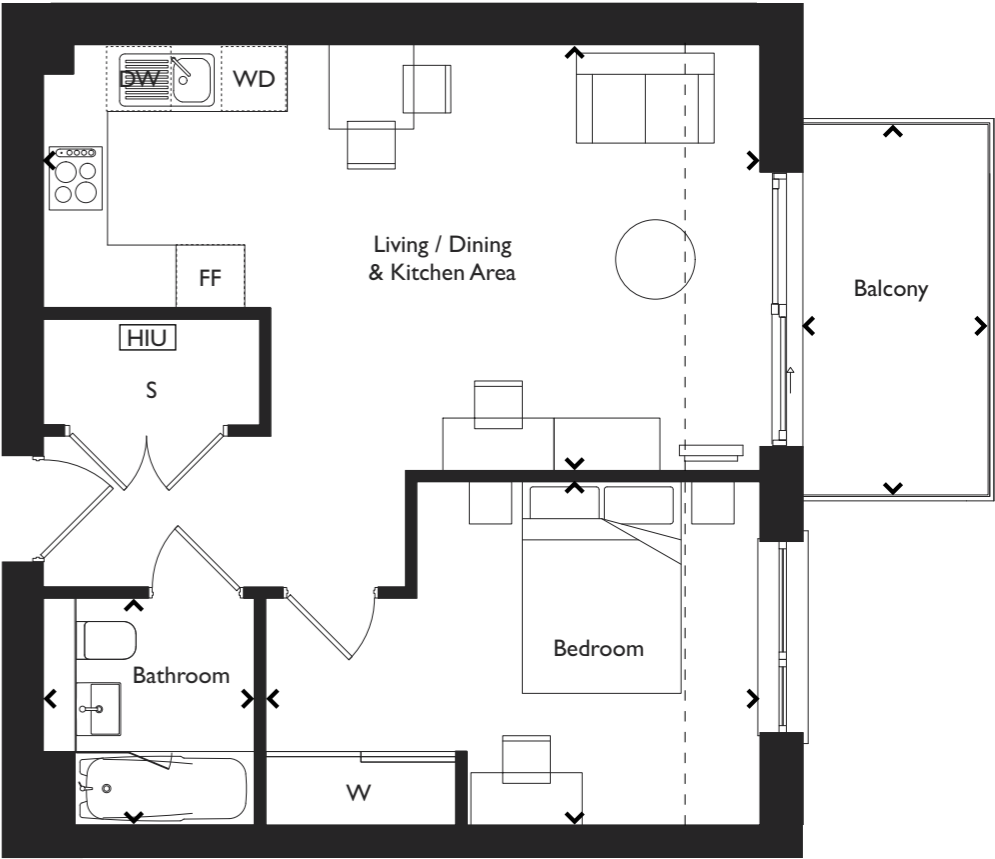
TYPE 42

ONE BEDROOM

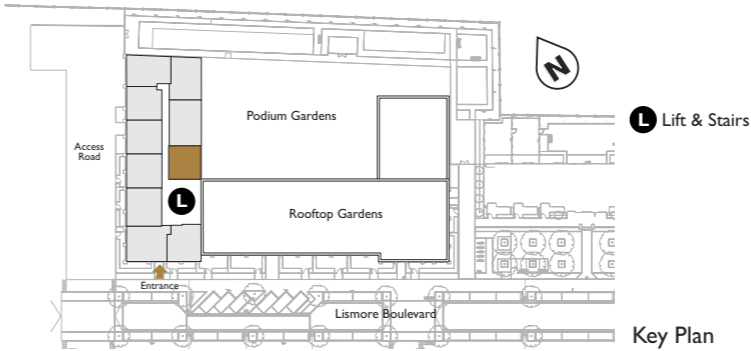
1 bedroom - 2 person
Shared Ownership
Level 3 to Level 6

Reference:
Flat No. 22 - Level 3
Flat No. 32 - Level 4
Flat No. 42 - Level 5
Flat No. 52 - Level 6

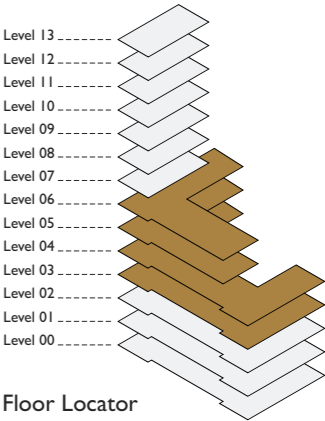
Key:
FF Fridge Freezer
DW Dishwasher
WD Washer Dryer
HIU Heat Interface Unit
W Wardrobe
S Storage
Dropped Ceiling - - - - -
Level 03 (Bedroom)
Level 05 (Bedroom and Living Area)
◀ ▶ Measurement points



Gross Internal Area	50.07m ²	538.9ft ²
Living / Dining & Kitchen Area	6.75m x 4.02m	22.14ft x 13.18ft
Bedroom	4.67m x 3.25m	15.32ft x 10.66ft
Bathroom	2.15m x 2.00m	7.05ft x 6.56ft
Storage	2.05m x 1.05m	6.72ft x 3.44ft
Balcony (not included in GIA)	6.5m²	69.9ft²



Apartment layouts provide approximate measurements only. Dimensions, which are taken from the indicated points of measurement, are for guidance only and are not intended to be used for carpet sizes, appliance space or items of furniture. Apartment areas are provided as gross internal areas and may vary. Bathroom and kitchen layouts are indicative only and are subject to change. Wardrobe size and position may vary. Ceiling height may vary within select apartments, please speak to the sales team for more information. All balcony dimensions and areas are approximate and may vary. The information contained within this document does not constitute part of any offer, contract or warranty. Whilst the plans have been prepared with all due care for the convenience of the intending purchaser, the information contained herein is a preliminary guide only.



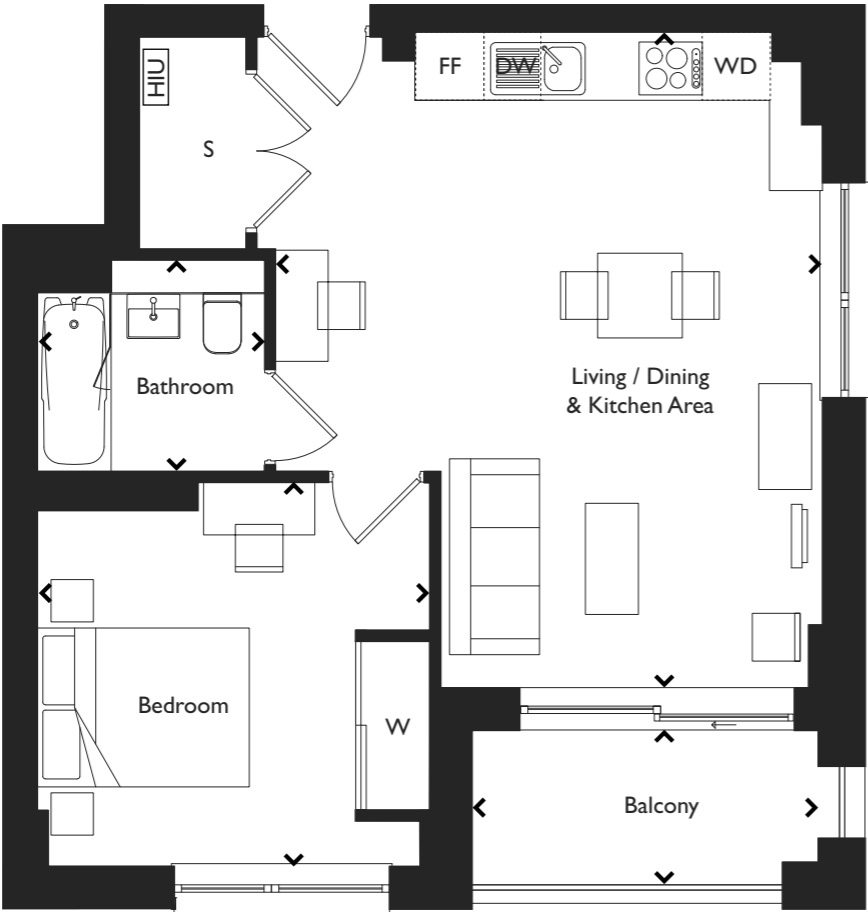
TYPE 51

ONE BEDROOM

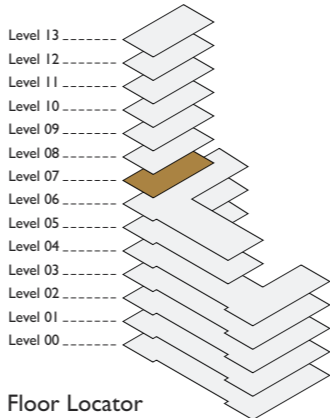
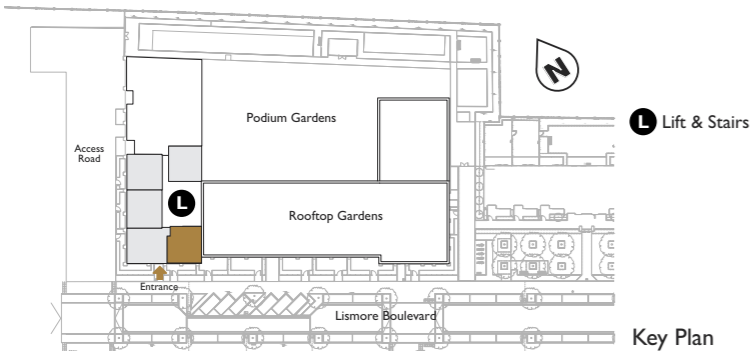
1 bedroom - 2 person
Shared Ownership
Level 7 Only

Reference:
Flat No. 53 - Level 7

- Key:**
- FF** Fridge Freezer
 - DW** Dishwasher
 - WD** Washer Dryer
 - HIU** Heat Interface Unit
 - W** Wardrobe
 - S** Storage
- ◀ ▶ Measurement points



Gross Internal Area	50.03m ²	538.5ft ²
Living / Dining & Kitchen Area	6.19m x 5.16m	20.30ft x 16.92ft
Bedroom	3.70m x 3.64m	12.14ft x 11.94ft
Bathroom	2.15m x 2.00m	7.05ft x 6.56ft
Storage	1.99m x 1.00m	6.53ft x 3.28ft
Balcony (not included in GIA)	5.1m²	54.8ft²



Apartment layouts provide approximate measurements only. Dimensions, which are taken from the indicated points of measurement, are for guidance only and are not intended to be used for carpet sizes, appliance space or items of furniture. Apartment areas are provided as gross internal areas and may vary. Bathroom and kitchen layouts are indicative only and are subject to change. Wardrobe size and position may vary. Ceiling height may vary within select apartments, please speak to the sales team for more information. All balcony dimensions and areas are approximate and may vary. The information contained within this document does not constitute part of any offer, contract or warranty. Whilst the plans have been prepared with all due care for the convenience of the intending purchaser, the information contained herein is a preliminary guide only.

TYPE 52

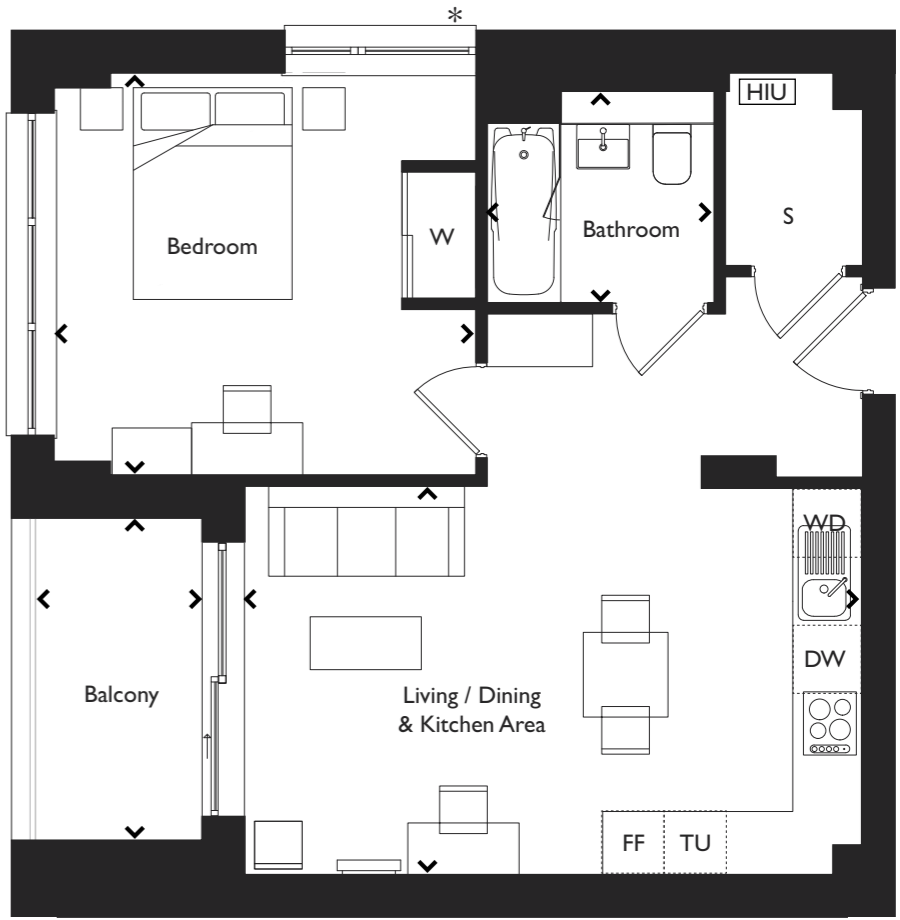
ONE BEDROOM

1 bedroom - 2 person
Shared Ownership
Level 7 to Level 13

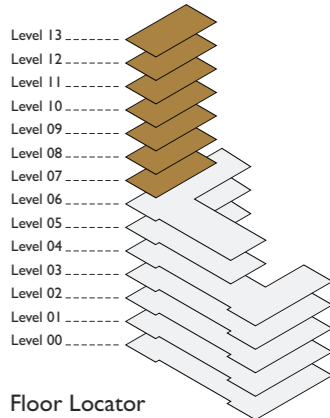
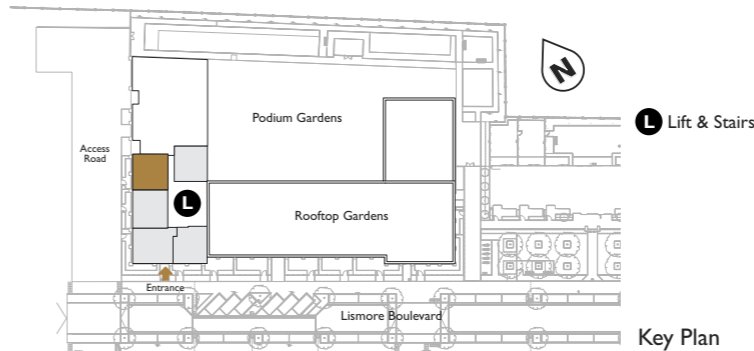
* Full height window on L8 to L13 only

Reference:
Flat No. 56 - Level 7
Flat No. 61 - Level 8
Flat No. 66 - Level 9
Flat No. 71 - Level 10
Flat No. 76 - Level 11
Flat No. 81 - Level 12
Flat No. 86 - Level 13

- Key:**
- FF** Fridge Freezer
 - DW** Dishwasher
 - WD** Washer Dryer
 - HIU** Heat Interface Unit
 - TU** Tall Unit
 - W** Wardrobe
 - S** Storage
- ◀ ▶ Measurement points



Gross Internal Area	50.31m ²	541.5ft ²
Living / Dining & Kitchen Area	5.83m x 3.67m	19.12ft x 12.04ft
Bedroom	3.98m x 3.80m	13.05ft x 12.46ft
Bathroom	2.15m x 2.00m	7.05ft x 6.56ft
Storage	1.82m x 1.30m	5.97ft x 4.26ft
Balcony (not included in GIA)	5m²	53.8ft²



Apartment layouts provide approximate measurements only. Dimensions, which are taken from the indicated points of measurement, are for guidance only and are not intended to be used for carpet sizes, appliance space or items of furniture. Apartment areas are provided as gross internal areas and may vary. Bathroom and kitchen layouts are indicative only and are subject to change. Wardrobe size and position may vary. Ceiling height may vary within select apartments, please speak to the sales team for more information. All balcony dimensions and areas are approximate and may vary. The information contained within this document does not constitute part of any offer, contract or warranty. Whilst the plans have been prepared with all due care for the convenience of the intending purchaser, the information contained herein is a preliminary guide only.

TYPE 53

ONE BEDROOM

1 bedroom - 2 person
Shared Ownership
Level 7 to Level 13

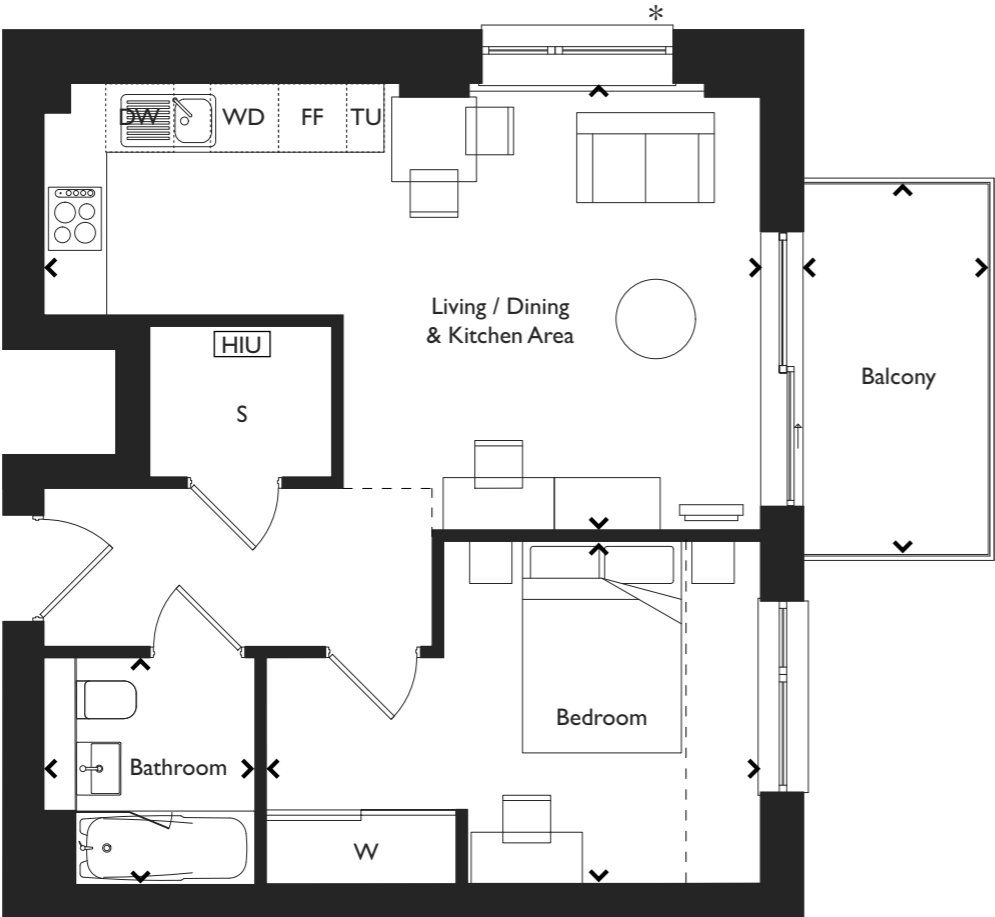
* Full height window on L8 to L13 only

Reference:
Flat No. 57 - Level 7
Flat No. 62 - Level 8
Flat No. 67 - Level 9
Flat No. 72 - Level 10
Flat No. 77 - Level 11
Flat No. 82 - Level 12
Flat No. 87 - Level 13

Key:
FF Fridge Freezer
DW Dishwasher
WD Washer Dryer
HIU Heat Interface Unit
TU Tall Unit
W Wardrobe
S Storage

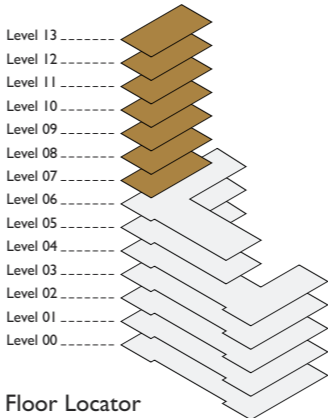
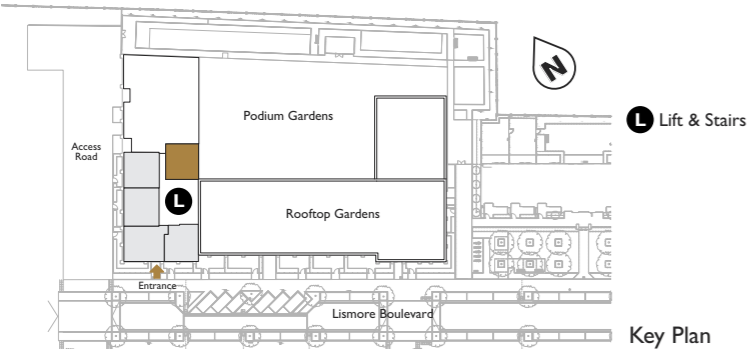
Dropped Ceiling - - - - -
Level L07-L09 (Bedroom)
Level L10-L12 (Bedroom & Hallway)

◀ ▶ Measurement points



Gross Internal Area	49.83m ²	536.4ft ²
Living / Dining & Kitchen Area	6.77m x 4.22m	22.21ft x 13.84ft
Bedroom	4.67m x 3.25m	15.32ft x 10.66ft
Bathroom	2.15m x 2.00m	7.05ft x 6.56ft
Storage	1.72m x 1.43m	5.64ft x 4.69ft

Balcony (not included in GIA)	6.5m ²	69.9ft ²
-------------------------------	-------------------	---------------------



Apartment layouts provide approximate measurements only. Dimensions, which are taken from the indicated points of measurement, are for guidance only and are not intended to be used for carpet sizes, appliance space or items of furniture. Apartment areas are provided as gross internal areas and may vary. Bathroom and kitchen layouts are indicative only and are subject to change. Wardrobe size and position may vary. Ceiling height may vary within select apartments, please speak to the sales team for more information. All balcony dimensions and areas are approximate and may vary. The information contained within this document does not constitute part of any offer, contract or warranty. Whilst the plans have been prepared with all due care for the convenience of the intending purchaser, the information contained herein is a preliminary guide only.

BLOCK H

TYPE 54

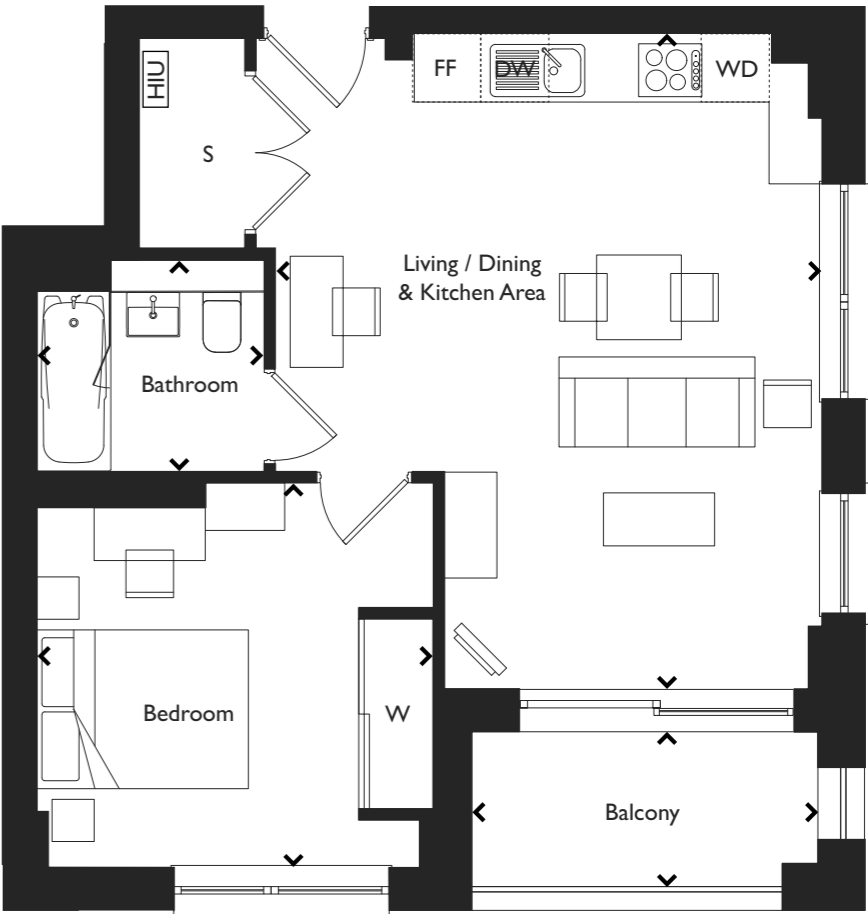
ONE BEDROOM

1 bedroom - 2 person
Shared Ownership
Level 8 to Level 13

Reference:
Flat No. 58 - Level 8
Flat No. 63 - Level 9
Flat No. 68 - Level 10
Flat No. 73 - Level 11
Flat No. 78 - Level 12
Flat No. 83 - Level 13

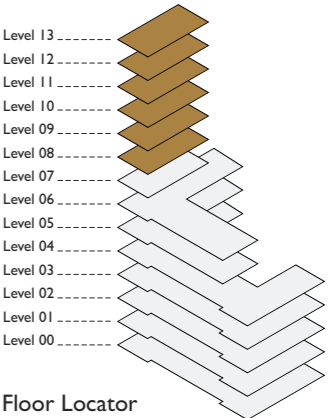
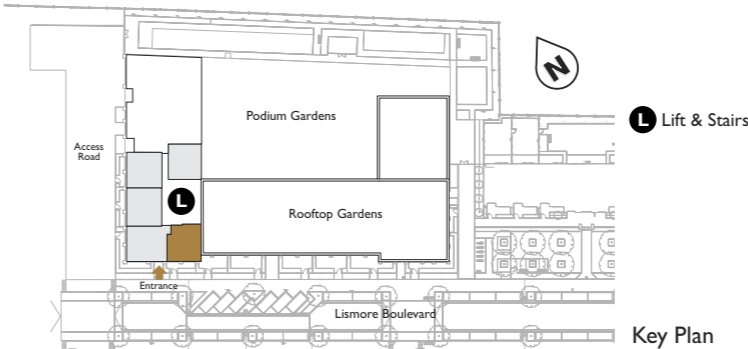
Key:
FF Fridge Freezer
DW Dishwasher
WD Washer Dryer
HIU Heat Interface Unit
W Wardrobe
S Storage

◀ ▶ Measurement points



Gross Internal Area	50.03m ²	538.5ft ²
Living / Dining & Kitchen Area	6.19m x 5.16m	20.30ft x 16.92ft
Bedroom	3.74m x 3.64m	12.27ft x 11.94ft
Bathroom	2.15m x 2.00m	7.05ft x 6.56ft
Storage	1.98m x 1.00m	6.49ft x 3.28ft

Balcony (not included in GIA)	5.1m ²	54.8ft ²
-------------------------------	-------------------	---------------------



Apartment layouts provide approximate measurements only. Dimensions, which are taken from the indicated points of measurement, are for guidance only and are not intended to be used for carpet sizes, appliance space or items of furniture. Apartment areas are provided as gross internal areas and may vary. Bathroom and kitchen layouts are indicative only and are subject to change. Wardrobe size and position may vary. Ceiling height may vary within select apartments, please speak to the sales team for more information. All balcony dimensions and areas are approximate and may vary. The information contained within this document does not constitute part of any offer, contract or warranty. Whilst the plans have been prepared with all due care for the convenience of the intending purchaser, the information contained herein is a preliminary guide only.

BLOCK H

AWARD WINNING PEABODY

Peabody has over 150 years of history, experience and expertise. With over 66,000 homes, we are one of the largest housing providers in London and the south-east.

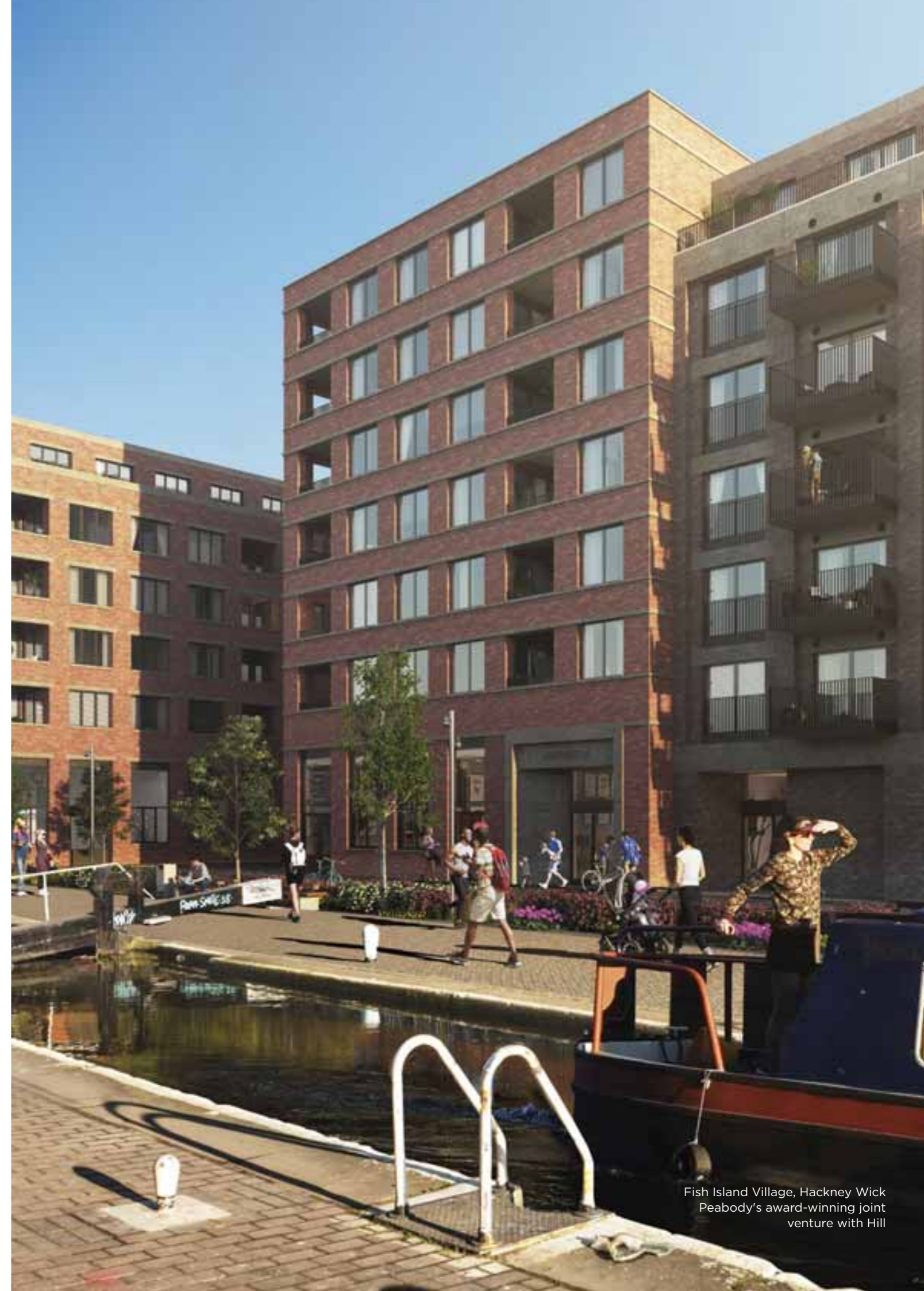
We deliver services to 133,000 residents, 18,000 care and support customers, and the wider communities in which we work.

Our mission is to help people make the most of their lives. We focus on those who need our help the most and our ambition is to create communities that are healthier, wealthier and happier. We build great quality places and have ambitious plans to deliver 3,300 new homes each year.

0203 369 3190
peabodysales.co.uk/colindale-gardens



Every care has been taken in the preparation of this brochure. The details contained herein are for guidance only and should not be relied upon as exactly describing any of the particular material illustrated or written by any order under the Consumer Protection from Unfair Trading Regulations 2008. This information does not constitute a contract, part of a contract or warranty. The developer operates a programme of continuous product development. Features, internal and external, may vary from time to time and may differ from those shown in the brochure. Computer generated images and photography used within this brochure are indicative only. Colindale Gardens is a marketing name and may not form part of the postal address for these properties. Detail correct at time of going to print, November 2019.



Fish Island Village, Hackney Wick
Peabody's award-winning joint
venture with Hill

