



Daisy Gardens

Felpham

Daisy Gardens

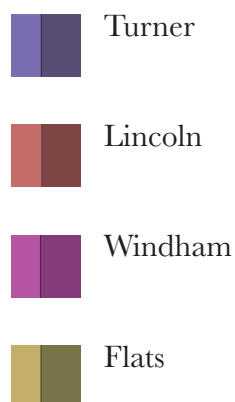


Daisy Gardens is a small development of 1,2 & 3 bedroom homes all available for purchase on a shared ownership lease.

With a mixture of traditional styles and materials including Sussex flint and decorative brickwork, the development is set within a quiet cul-de-sac in the heart of Felpham. It is destined to become a fantastic place to live, for a growing new community.

Daisy Gardens is just off of the A259 providing quick links to locations along the Sussex coastline as well as the motorway network. An ideal location for commuters and young families, Daisy Gardens offers the perfect blend of peaceful yet accessible living.

Site Plan





CGI Imagery of The Turner

The Turner

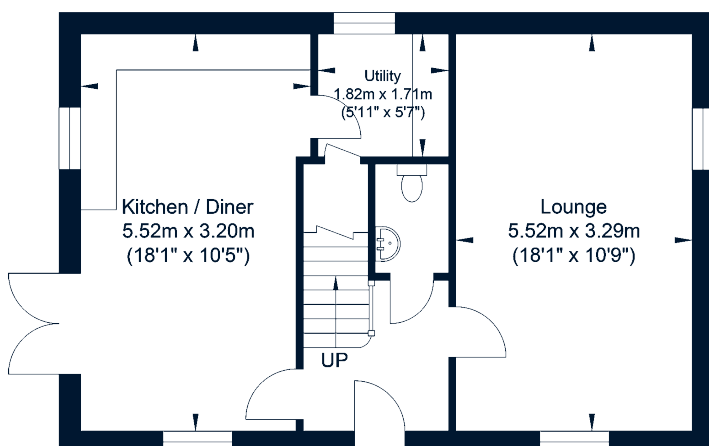
£335,000

Share price starting from £117,250

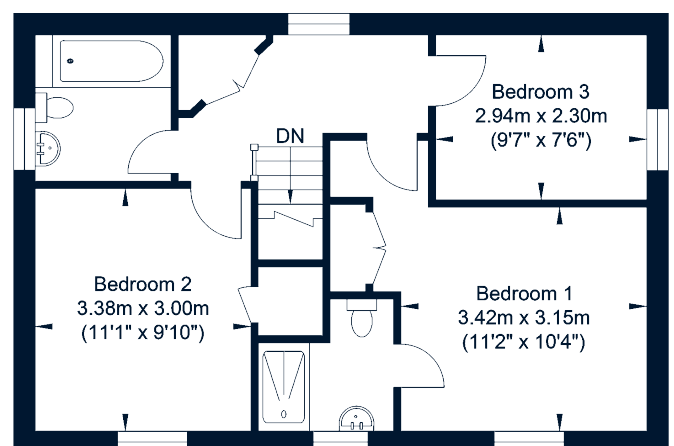
Plots 1, 14, 15

Total Floor Area
1011.37 sq ft / 93.96 sq m

- Private Driveway
- Indesit Single Stainless Steel Oven
- Indesit 4 Burner Gas Stainless Steel Hob
- Indesit Built in 70/30 Fridge Freezer
- Ensuite Bristan Joy Shower
- Sky Q Ready
- Television Points in all bedrooms
- Primo Plus Carpets throughout
- External Garden Tap & Shed



Ground Floor
Approximate Floor Area - 505.68 sq ft / 46.98 sq m



First Floor
Approximate Floor Area - 505.68 sq ft / 46.98 sq m



CGI Imagery of The Lincoln

The Lincoln

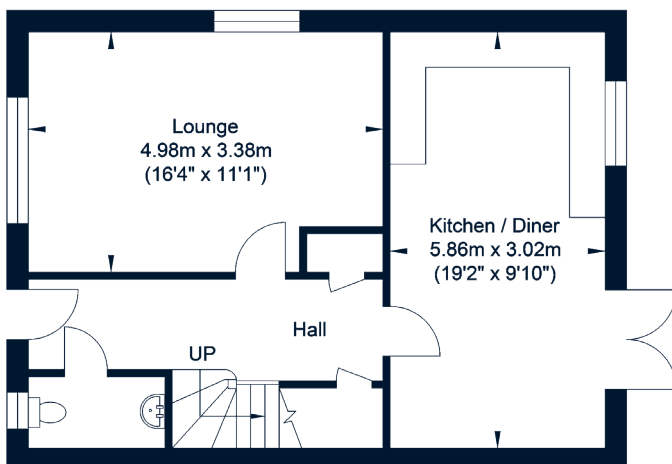
£315,000

Share price starting from £110,250

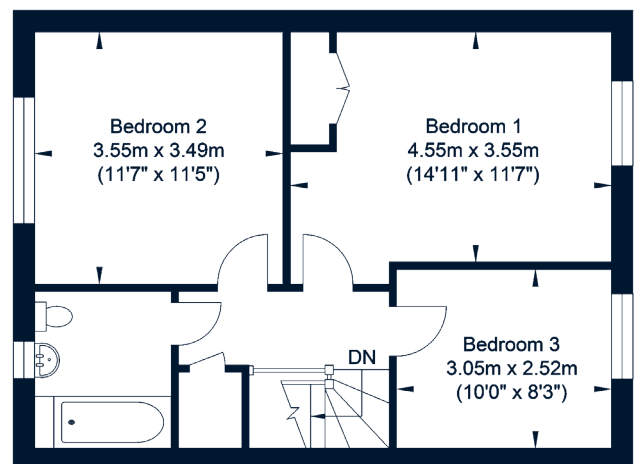
Plots 2, 6, 9, 10, 13

Total Floor Area
1021.28 sq ft / 94.88 sq m

- A range of detached, semi detached and terrace homes
- Private or allocated parking
- Indesit Single Stainless Steel Oven
- Indesit 4 Burner Gas Stainless Steel Hob
- Indesit Built in 70/30 Fridge Freezer
- Ensuite Bristan Joy Shower
- Sky Q Ready
- Television Points in all bedrooms
- Primo Plus Carpets throughout
- Solar PV Panels (this varies by plot)
- External Garden Tap & Shed



Ground Floor
Approximate Floor Area - 510.63 sq ft / 47.44 sq m



First Floor
Approximate Floor Area - 510.63 sq ft / 47.44 sq m



CGI Imagery of The Windum

The Windum

£250,000

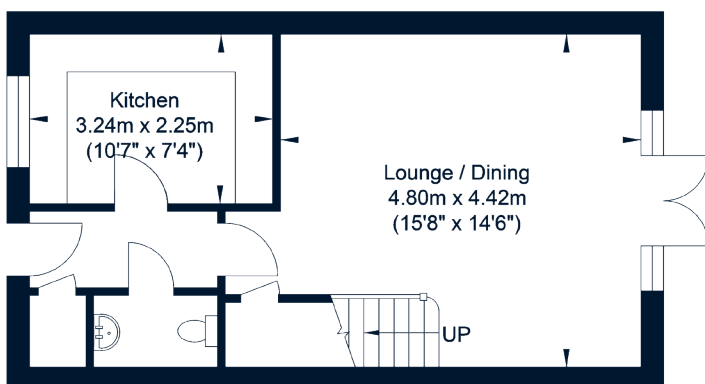
Share price starting from £87,500

Plots 3, 4, 5, 8, 12, 16

Total Floor Area

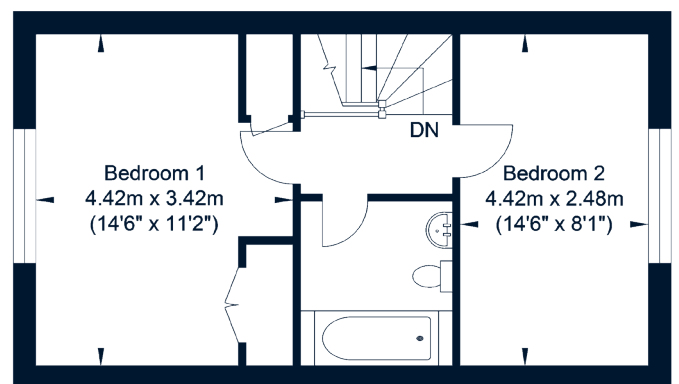
774.57 sq ft / 71.96 sq m

- Indesit Single Stainless Steel Oven
- Indesit 4 Burner Gas Stainless Steel Hob
- Open Plan living
- Supplied with Garden Shed
- Sky Q Ready
- Television Points in all bedrooms
- Primo Plus Carpets throughout
- Fully enclosed rear garden
- Solar PV Panels (This varies by plot)
- External Garden Tap



Ground Floor

Approximate Floor Area - 387.28 sq ft / 35.98 sq m



First Floor

Approximate Floor Area - 387.28 sq ft / 35.98 sq m



CGI Imagery of The Flats

The Apartments

£180,000

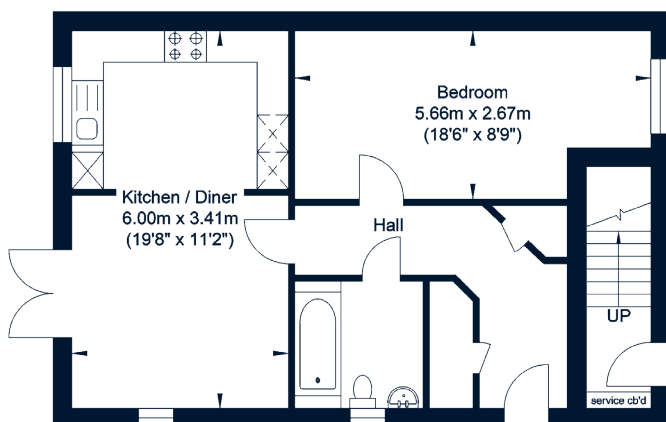
Share price starting from £63,000

Plots 17 & 18

Total Floor Area for each Apartment

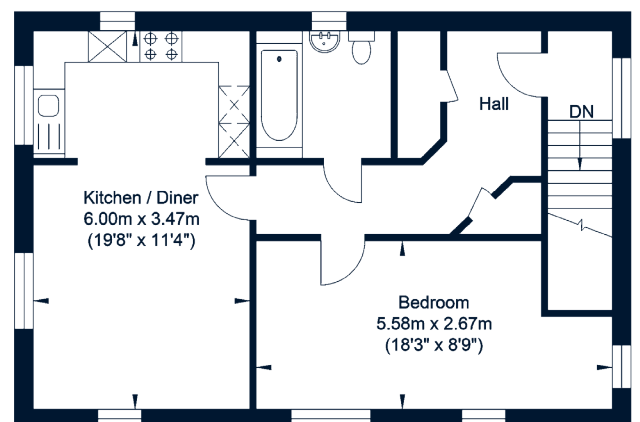
594.27 sq ft / 55.21 sq m

- Private Garden
- Indesit Single Stainless Steel Oven
- Indesit 4 Burner Gas Stainless Steel Hob
- Sky Q Ready
- Television Points in all bedrooms
- Primo Plus Carpets throughout
- Garden Shed
- Open Plan Living



Apartment 1

Total Floor Area - 594.27 sq ft / 55.21 sq m



Apartment 2

Total Floor Area - 594.27 sq ft / 55.21 sq m



Worthing Homes

sales@worthing-homes.co.uk

01903 703137

Davison House, North Street, Worthing, BN11 1ER



Worthing Homes are a registered housing provider with properties in West Sussex. As an independent social business working with local people and partners, Worthing Homes puts its energy into creating places where people want to live and investing in services as well as homes.

We are dedicated to providing good quality affordable homes and creating thriving communities for people in the local area. We believe that it is the foundation required for so many other things that we all depend on but may take for granted such as security, education, health, work and support networks.



CGI Imagery of the internal units



Shared Ownership

What Is Shared Ownership?

Shared Ownership is a fantastic way to get on the property ladder, without the need for a large deposit. It is a form of Affordable Housing that combines “renting” with buying. “Part buy, part rent” is often referred to when searching for a Shared Ownership home. The scheme is designed to enable people to get on the housing ladder and providing you pay your mortgage, rent and other expenses, no one will ask you to leave your home. Initial purchase shares vary from a minimum of 35% up to 75%.

Usually you will raise a mortgage on the share you wish to purchase and pay rent back to Worthing Homes on the part you do not own. As your income rises you can chose to purchase more shares in your property (This is referred to as Staircasing).

Can I make improvements?

You don't need our permission to make changes to decoration in your property. For any larger improvements you should consult Worthing Homes to make sure you are not breaching any terms of your lease.

Can I rent out a room?

Your lease does not allow sub-letting.

Can I sell my home in the future?

Yes you can. Under the terms of your lease Worthing Homes will try to find a suitable purchaser for your home. After our nomination period you are able to approach buyers on the open market either privately or through an estate agent.

How do I increase the share of the property I own?

Once you have moved in you have the choice of purchasing a bigger share in your home if you want to. This is called ‘staircasing’. The price you pay for any extra share is based on the market value of your home at the time you want to buy. This value can go up or down according to house prices. The value will be set by an independent valuer. There will be some costs involved in staircasing such as a valuation fee and solicitor's fees.

Contact Us

sales@worthing-homes.co.uk

01903 703137

Davison House, North Street, Worthing, BN11 1ER

Designed by GDImpact

