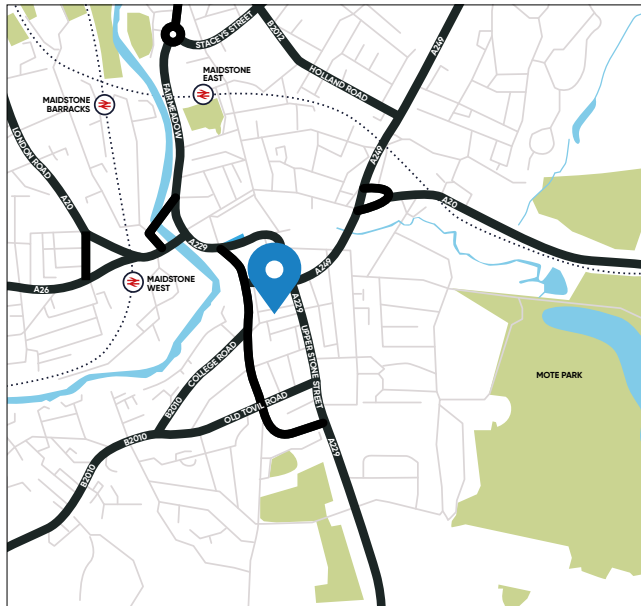


FIVE AT BRUNSWICK PLACE

B4 unit 01 - Three bedroom house

A unique opportunity to buy an exceptional three bedroom contemporary townhouse in central Maidstone, with Shared Ownership. Complete with spacious open plan living spaces, ground floor cloakroom, storage, family bathroom, two bedrooms and a further master bedroom with en suite.



Travel by car:

- 4 mins** Maidstone West
- 35 mins** Royal Tunbridge Wells
- 35 mins** Whitstable
- 60 mins** Hastings

Travel by train:

- 49 mins** Maidstone West station to London St Pancras
- 62 mins** Maidstone East station to London Victoria



SPECIFICATION

Kitchen

- Fully fitted neutral contemporary worktops with complementary workshops and up stands
- Integrated appliances from Hotpoint
 - Electric single oven
 - Gas hob with extractor hood
 - Fridge/Freezer
 - Dishwasher
- 1.5 bowl sink with drainer and mixer tap
- Under cupboard lighting
- Ceramic tiled flooring

Bathroom

- White sanitaryware
- Steel bath with shower mixer tap and easy clean shower screen
- Thermostatic shower to en suite
- Chrome heated towel rail
- Mirror
- Chrome shaver point
- Ceramic tiling to floors
- Ceramic tiling to walls, full height and perimeter of the bath and shower

General

- Built in wardrobes to master bedroom
- Chrome light switches, sockets and plates
- LED downlight to kitchens, bathrooms and throughout open plan living spaces
- Pendant lighting to all other rooms
- Energy efficient lighting throughout
- Walls in Ash White
- Laminate flooring throughout
- Neutral 50/50 wool mix carpet to bedroom
- Roller blinds to all windows



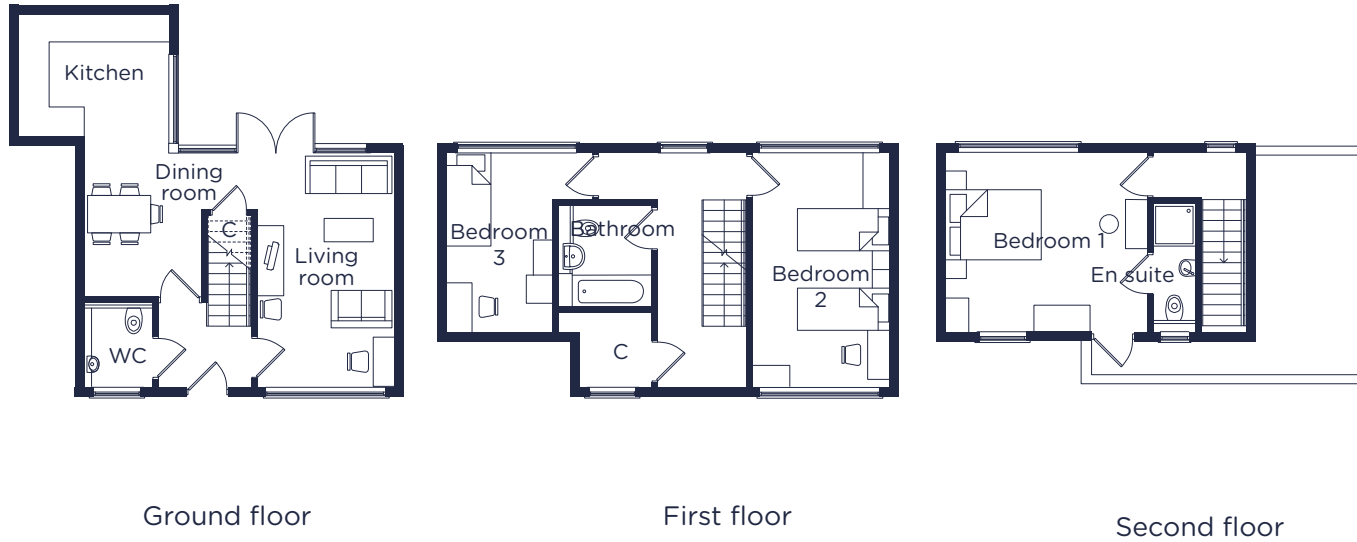
020 3640 7111

info@complete-moves.co.uk

*Travel times are approximate. Source Google Maps and nationalrail.co.uk

FIVE AT BRUNSWICK PLACE

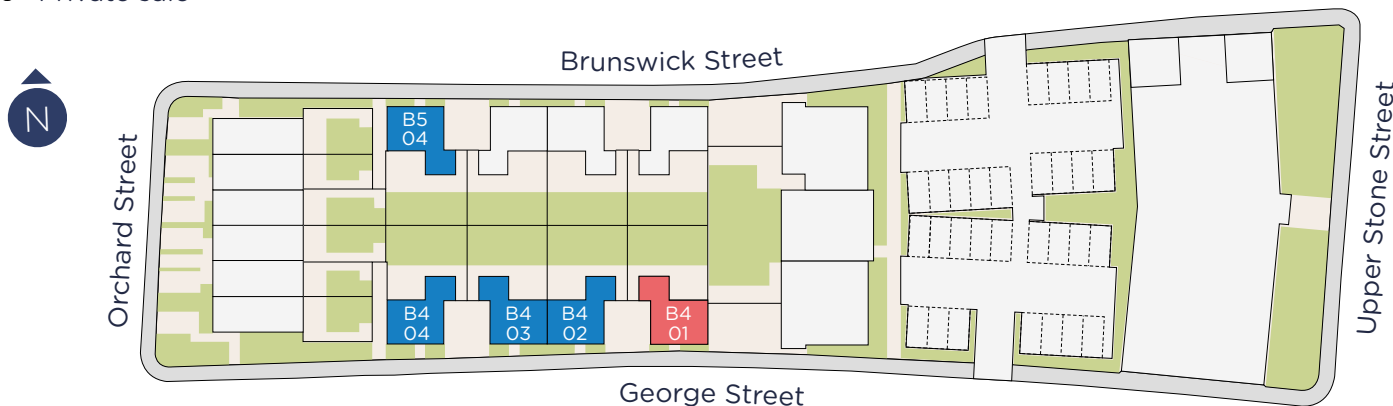
B4 unit 01



Kitchen	9m ²
Living room	16m ²
Dining room	7.6m ²
Bedroom 1	16.4m ²
Bedroom 2	14.6m ²
Bedroom 3	9.5m ²

Site Plan

- B4 unit 01
- Shared Ownership
- Private sale



Key features

- Allocated off road parking
- Private rear gardens
- Central Maidstone location with selection of Ofsted rated Good schools

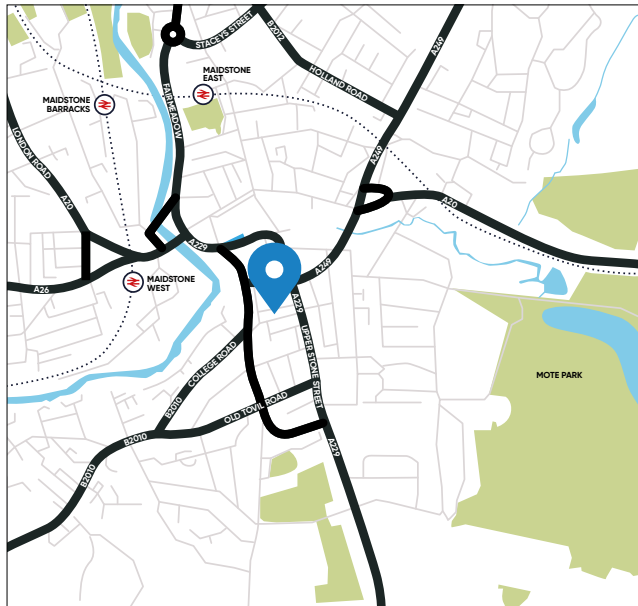


Please note that these plans are just a guide. They're not part of a contract, warranty or agreement. The plans may not be to scale and may not be exactly the same when they're built. Please allow a 10cm tolerance either way on each dimension stated. Dimensions on physically completed properties can differ from architect's initial plan. It is common for the position of fixtures and fittings to change from these plans during the build process, for example kitchen units, windows and radiators. The property may also be a mirrored version of the layout shown here. The site location on the map is an approximate location.

FIVE AT BRUNSWICK PLACE

B4 unit 02 - Three bedroom house

A unique opportunity to buy an exceptional three bedroom contemporary townhouse in central Maidstone, with Shared Ownership. Complete with spacious open plan living spaces, ground floor cloakroom, storage, family bathroom, two bedrooms and a further master bedroom with en suite.



Travel by car:

- 4 mins** Maidstone West
- 35 mins** Royal Tunbridge Wells
- 35 mins** Whitstable
- 60 mins** Hastings

Travel by train:

- 49 mins** Maidstone West station to London St Pancras
- 62 mins** Maidstone East station to London Victoria



SPECIFICATION

Kitchen

- Fully fitted neutral contemporary worktops with complementary workshops and up stands
- Integrated appliances from Hotpoint
 - Electric single oven
 - Gas hob with extractor hood
 - Fridge/Freezer
 - Dishwasher
- 1.5 bowl sink with drainer and mixer tap
- Under cupboard lighting
- Ceramic tiled flooring

Bathroom

- White sanitaryware
- Steel bath with shower mixer tap and easy clean shower screen
- Thermostatic shower to en suite
- Chrome heated towel rail
- Mirror
- Chrome shaver point
- Ceramic tiling to floors
- Ceramic tiling to walls, full height and perimeter of the bath and shower

General

- Built in wardrobes to master bedroom
- Chrome light switches, sockets and plates
- LED downlight to kitchens, bathrooms and throughout open plan living spaces
- Pendant lighting to all other rooms
- Energy efficient lighting throughout
- Walls in Ash White
- Laminate flooring throughout
- Neutral 50/50 wool mix carpet to bedroom
- Roller blinds to all windows



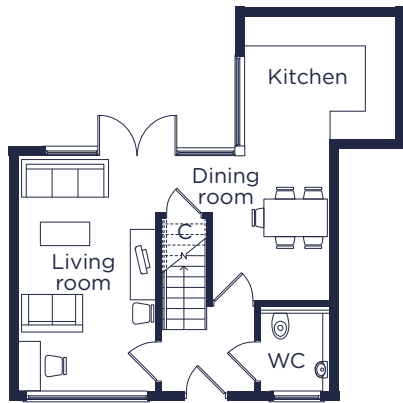
020 3640 7111

info@complete-moves.co.uk

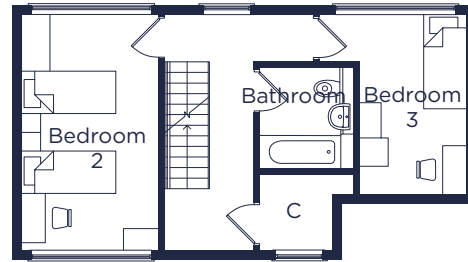
*Travel times are approximate. Source Google Maps and nationalrail.co.uk

FIVE AT BRUNSWICK PLACE

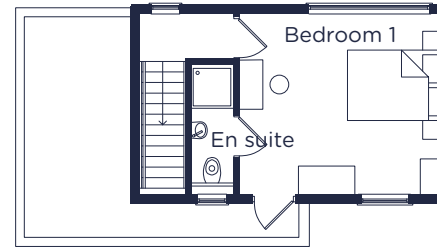
B4 unit 02



Ground floor



First floor

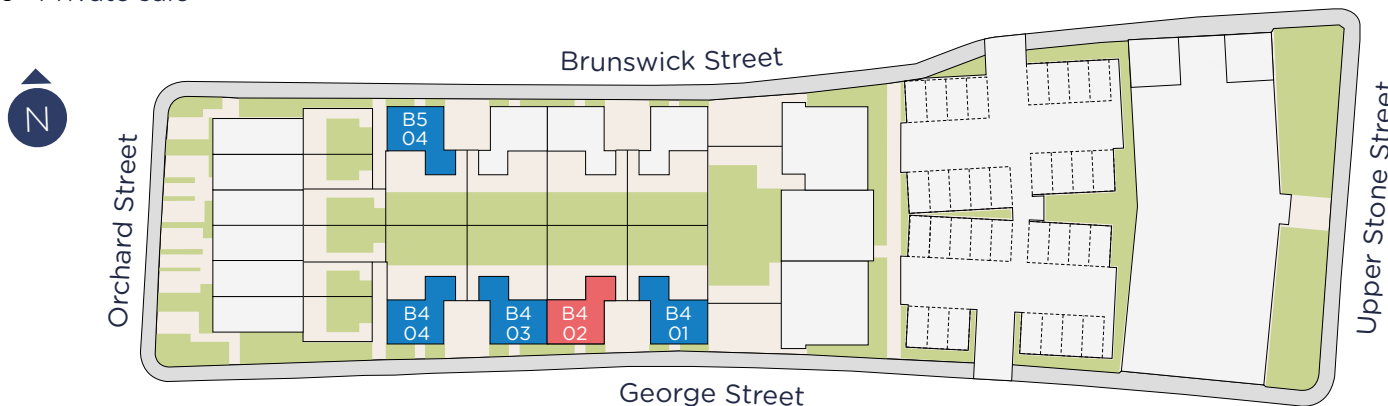


Second floor

Kitchen	9m ²
Living room	16m ²
Dining room	7.6m ²
Bedroom 1	16.4m ²
Bedroom 2	14.6m ²
Bedroom 3	9.5m ²

Site Plan

- B4 unit 02
- Shared Ownership
- Private sale



Key features

- Allocated off road parking
- Private rear gardens
- Central Maidstone location with selection of Ofsted rated Good schools

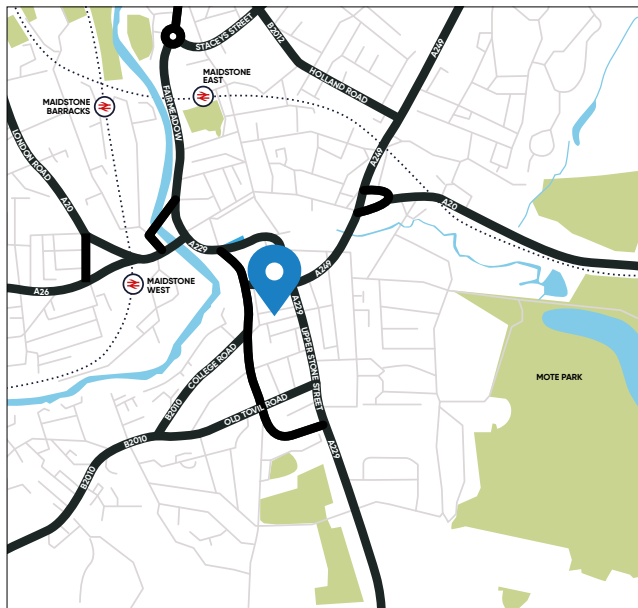


Please note that these plans are just a guide. They're not part of a contract, warranty or agreement. The plans may not be to scale and may not be exactly the same when they're built. Please allow a 10cm tolerance either way on each dimension stated. Dimensions on physically completed properties can differ from architect's initial plan. It is common for the position of fixtures and fittings to change from these plans during the build process, for example kitchen units, windows and radiators. The property may also be a mirrored version of the layout shown here. The site location on the map is an approximate location.

FIVE AT BRUNSWICK PLACE

B4 unit 03 - Three bedroom house

A unique opportunity to buy an exceptional three bedroom contemporary townhouse in central Maidstone, with Shared Ownership. Complete with spacious open plan living spaces, ground floor cloakroom, storage, family bathroom, two bedrooms and a further master bedroom with en suite.



Travel by car:

- 4 mins Maidstone West
- 35 mins Royal Tunbridge Wells
- 35 mins Whitstable
- 60 mins Hastings

Travel by train:

- 49 mins Maidstone West station to London St Pancras
- 62 mins Maidstone East station to London Victoria



SPECIFICATION

Kitchen

- Fully fitted neutral contemporary worktops with complementary workshops and up stands
- Integrated appliances from Hotpoint
 - Electric single oven
 - Gas hob with extractor hood
 - Fridge/Freezer
 - Dishwasher
- 1.5 bowl sink with drainer and mixer tap
- Under cupboard lighting
- Ceramic tiled flooring

Bathroom

- White sanitaryware
- Steel bath with shower mixer tap and easy clean shower screen
- Thermostatic shower to en suite
- Chrome heated towel rail
- Mirror
- Chrome shaver point
- Ceramic tiling to floors
- Ceramic tiling to walls, full height and perimeter of the bath and shower

General

- Built in wardrobes to master bedroom
- Chrome light switches, sockets and plates
- LED downlight to kitchens, bathrooms and throughout open plan living spaces
- Pendant lighting to all other rooms
- Energy efficient lighting throughout
- Walls in Ash White
- Laminate flooring throughout
- Neutral 50/50 wool mix carpet to bedroom
- Roller blinds to all windows



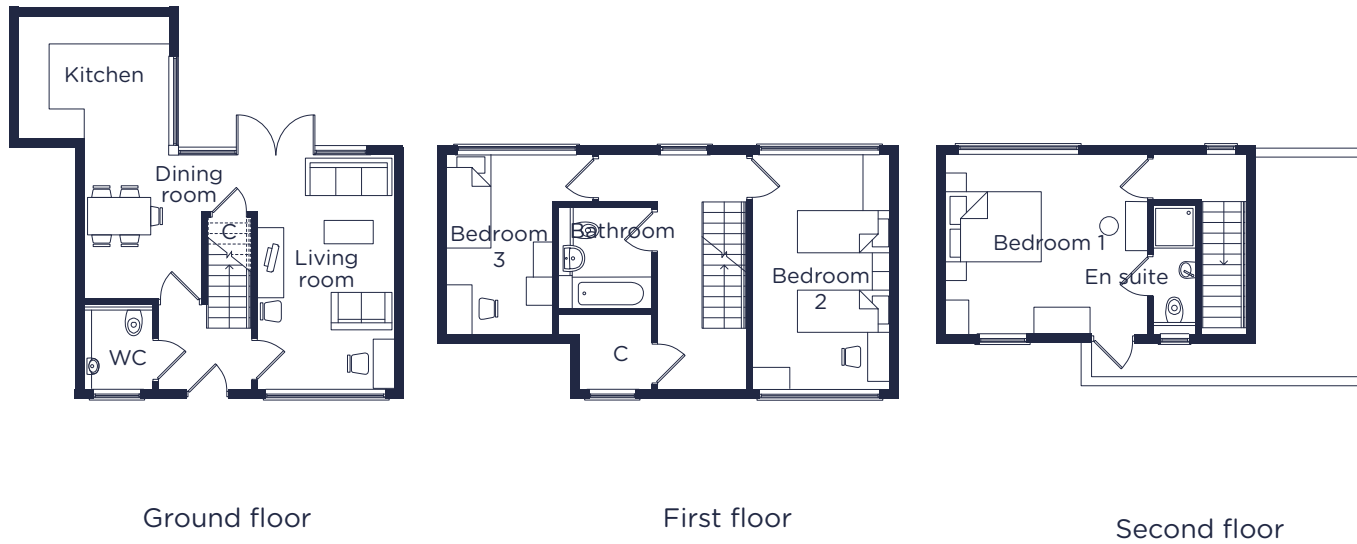
020 3640 7111

info@complete-moves.co.uk

*Travel times are approximate. Source Google Maps and nationalrail.co.uk

FIVE AT BRUNSWICK PLACE

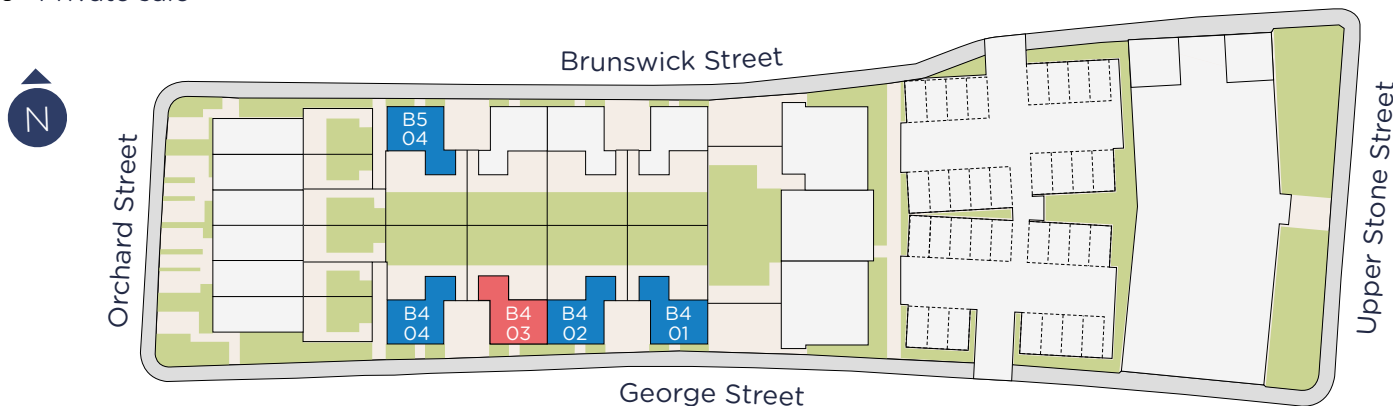
B4 unit 03



Kitchen	9m ²
Living room	16m ²
Dining room	7.6m ²
Bedroom 1	16.4m ²
Bedroom 2	14.6m ²
Bedroom 3	9.5m ²

Site Plan

- B4 unit 03
- Shared Ownership
- Private sale



Key features

- Allocated off road parking
- Private rear gardens
- Central Maidstone location with selection of Ofsted rated Good schools

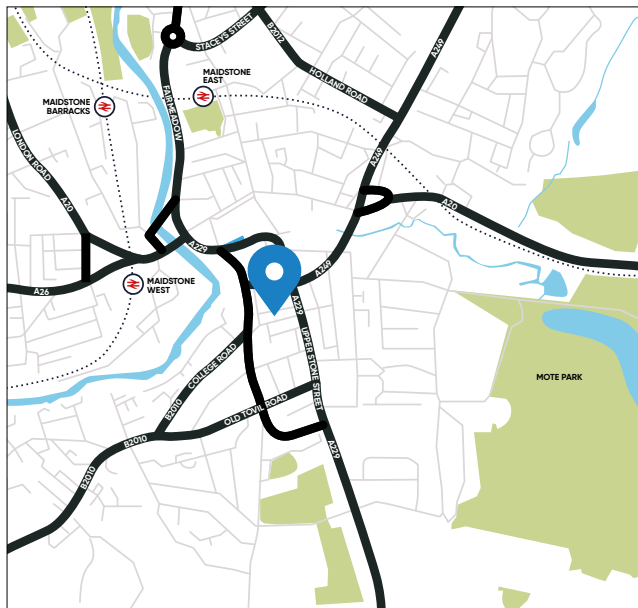


Please note that these plans are just a guide. They're not part of a contract, warranty or agreement. The plans may not be to scale and may not be exactly the same when they're built. Please allow a 10cm tolerance either way on each dimension stated. Dimensions on physically completed properties can differ from architect's initial plan. It is common for the position of fixtures and fittings to change from these plans during the build process, for example kitchen units, windows and radiators. The property may also be a mirrored version of the layout shown here. The site location on the map is an approximate location.

FIVE AT BRUNSWICK PLACE

B4 unit 04 - Three bedroom house

A unique opportunity to buy an exceptional three bedroom contemporary townhouse in central Maidstone, with Shared Ownership. Complete with spacious open plan living spaces, ground floor cloakroom, storage, family bathroom, two bedrooms and a further master bedroom with en suite.



Travel by car:

- 4 mins Maidstone West
- 35 mins Royal Tunbridge Wells
- 35 mins Whitstable
- 60 mins Hastings

Travel by train:

- 49 mins Maidstone West station to London St Pancras
- 62 mins Maidstone East station to London Victoria



SPECIFICATION

Kitchen

- Fully fitted neutral contemporary worktops with complementary workshops and up stands
- Integrated appliances from Hotpoint
 - Electric single oven
 - Gas hob with extractor hood
 - Fridge/Freezer
 - Dishwasher
- 1.5 bowl sink with drainer and mixer tap
- Under cupboard lighting
- Ceramic tiled flooring

Bathroom

- White sanitaryware
- Steel bath with shower mixer tap and easy clean shower screen
- Thermostatic shower to en suite
- Chrome heated towel rail
- Mirror
- Chrome shaver point
- Ceramic tiling to floors
- Ceramic tiling to walls, full height and perimeter of the bath and shower

General

- Built in wardrobes to master bedroom
- Chrome light switches, sockets and plates
- LED downlight to kitchens, bathrooms and throughout open plan living spaces
- Pendant lighting to all other rooms
- Energy efficient lighting throughout
- Walls in Ash White
- Laminate flooring throughout
- Neutral 50/50 wool mix carpet to bedroom
- Roller blinds to all windows



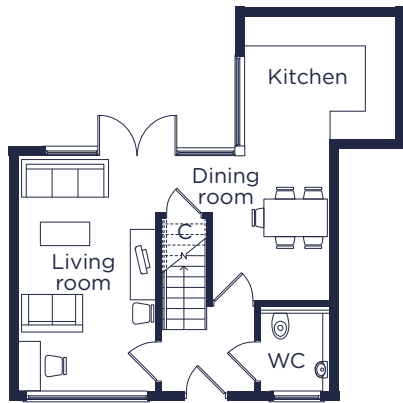
020 3640 7111

info@complete-moves.co.uk

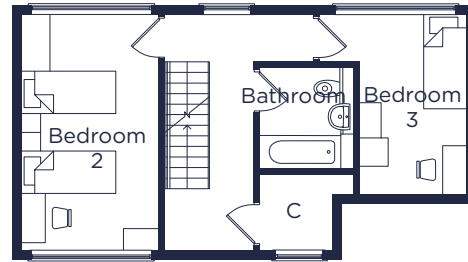
*Travel times are approximate. Source Google Maps and nationalrail.co.uk

FIVE AT BRUNSWICK PLACE

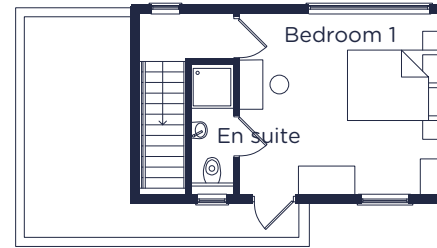
B4 unit 04



Ground floor



First floor

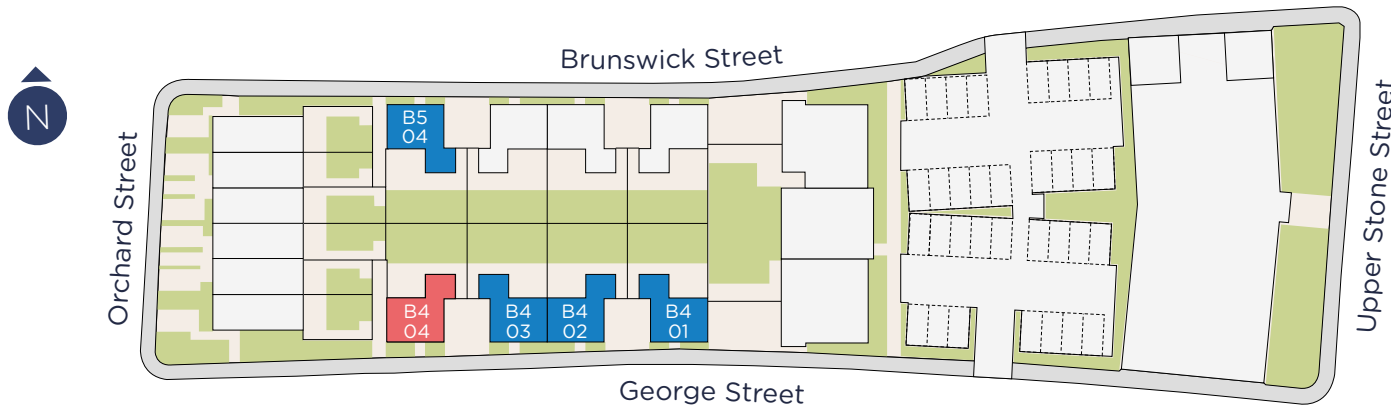


Second floor

Kitchen	9m ²
Living room	16m ²
Dining room	7.6m ²
Bedroom 1	16.4m ²
Bedroom 2	14.6m ²
Bedroom 3	9.5m ²

Site Plan

- B4 unit 04
- Shared Ownership
- Private sale



Key features

- Allocated off road parking
- Private rear gardens
- Central Maidstone location with selection of Ofsted rated Good schools

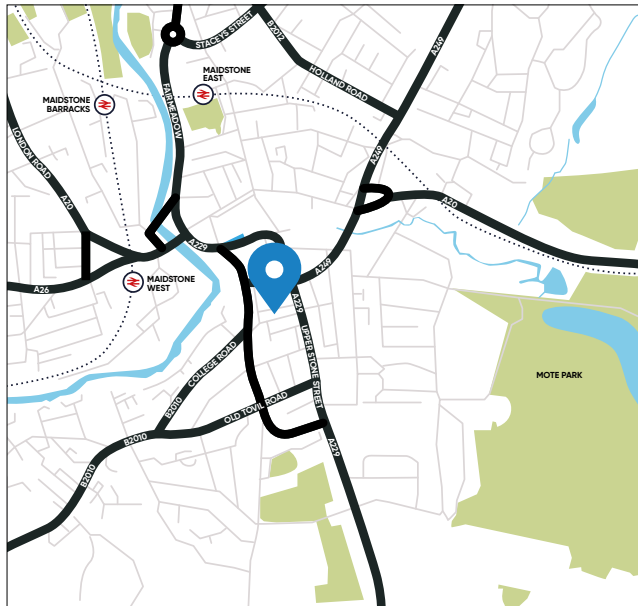


Please note that these plans are just a guide. They're not part of a contract, warranty or agreement. The plans may not be to scale and may not be exactly the same when they're built. Please allow a 10cm tolerance either way on each dimension stated. Dimensions on physically completed properties can differ from architect's initial plan. It is common for the position of fixtures and fittings to change from these plans during the build process, for example kitchen units, windows and radiators. The property may also be a mirrored version of the layout shown here. The site location on the map is an approximate location.

FIVE AT BRUNSWICK PLACE

B5 unit 04 - Three bedroom house

A unique opportunity to buy an exceptional three bedroom contemporary townhouse in central Maidstone, with Shared Ownership. Complete with spacious open plan living spaces, ground floor cloakroom, storage, family bathroom, two bedrooms and a further master bedroom with en suite.



Travel by car:

- 4 mins** Maidstone West
- 35 mins** Royal Tunbridge Wells
- 35 mins** Whitstable
- 60 mins** Hastings

Travel by train:

- 49 mins** Maidstone West station to London St Pancras
- 62 mins** Maidstone East station to London Victoria



SPECIFICATION

Kitchen

- Fully fitted neutral contemporary worktops with complementary workshops and up stands
- Integrated appliances from Hotpoint
 - Electric single oven
 - Gas hob with extractor hood
 - Fridge/Freezer
 - Dishwasher
- 1.5 bowl sink with drainer and mixer tap
- Under cupboard lighting
- Ceramic tiled flooring

Bathroom

- White sanitaryware
- Steel bath with shower mixer tap and easy clean shower screen
- Thermostatic shower to en suite
- Chrome heated towel rail
- Mirror
- Chrome shaver point
- Ceramic tiling to floors
- Ceramic tiling to walls, full height and perimeter of the bath and shower

General

- Built in wardrobes to master bedroom
- Chrome light switches, sockets and plates
- LED downlight to kitchens, bathrooms and throughout open plan living spaces
- Pendant lighting to all other rooms
- Energy efficient lighting throughout
- Walls in Ash White
- Laminate flooring throughout
- Neutral 50/50 wool mix carpet to bedroom
- Roller blinds to all windows



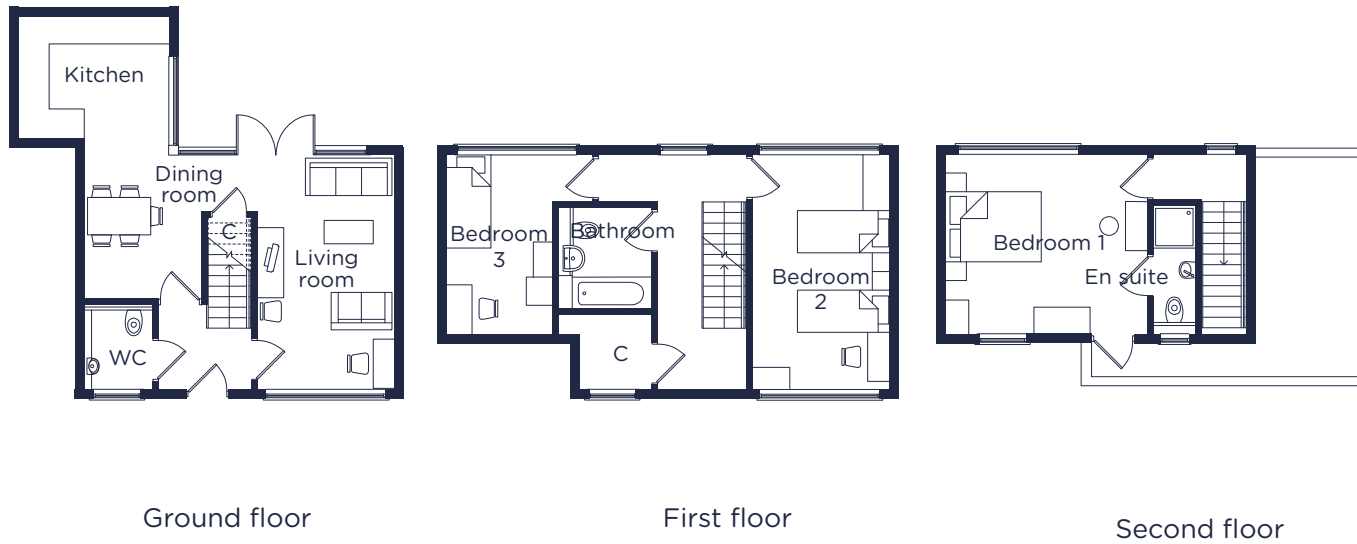
020 3640 7111

info@complete-moves.co.uk

*Travel times are approximate. Source Google Maps and nationalrail.co.uk

FIVE AT BRUNSWICK PLACE

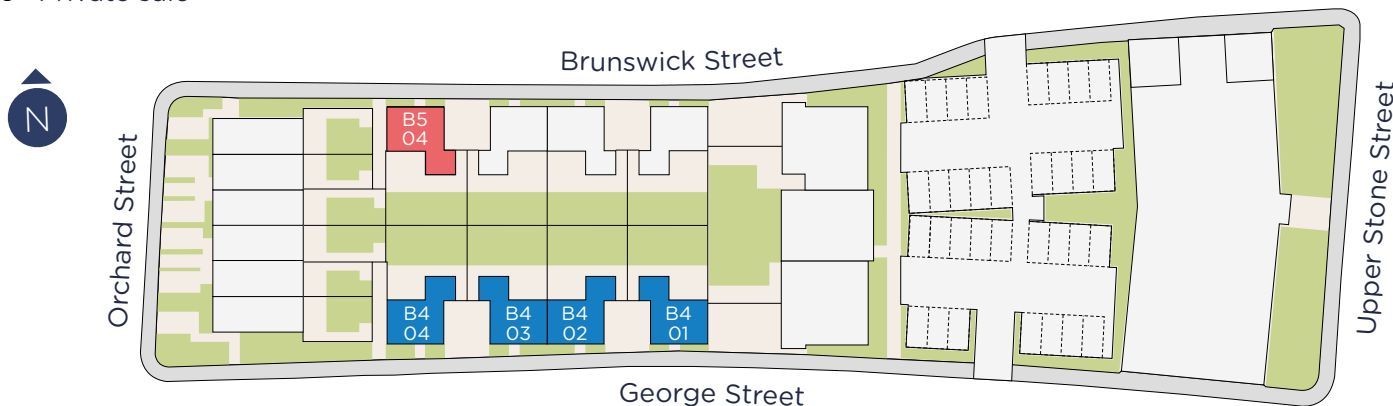
B5 unit 04



Kitchen	9m ²
Living room	16m ²
Dining room	7.6m ²
Bedroom 1	16.4m ²
Bedroom 2	14.6m ²
Bedroom 3	9.5m ²

Site Plan

- B5 unit 04
- Shared Ownership
- Private sale



Key features

- Allocated off road parking
- Private rear gardens
- Central Maidstone location with selection of Ofsted rated Good schools



Please note that these plans are just a guide. They're not part of a contract, warranty or agreement. The plans may not be to scale and may not be exactly the same when they're built. Please allow a 10cm tolerance either way on each dimension stated. Dimensions on physically completed properties can differ from architect's initial plan. It is common for the position of fixtures and fittings to change from these plans during the build process, for example kitchen units, windows and radiators. The property may also be a mirrored version of the layout shown here. The site location on the map is an approximate location.