



Making home ownership possible

Block 4
Floor Plans

by Metropolitan Thames Valley



SO Resi is a new way of making home ownership possible for more people. You buy a share of your home, with a lower deposit, smaller mortgage and monthly payment on the rest.

SO Resi redefines shared ownership, by making everything clear and uncomplicated, so you understand how it all works at every stage, before and after you buy. Our SO Resi homeowners are important to us and we aim to build strong, lasting relationships by being here to answer your questions in language that makes sense.

SO Resi by Metropolitan Thames Valley is a not-for-profit housing association. For over fifty years we've been building good quality, affordable new homes and managing them well. By doing that, we've been helping to create communities where people are proud and happy to live.

Elegant modern
1 and 2 bedroom
apartments

A new home in picturesque Ware

This stylish collection of newly built one, two and three bedroom SO Resi apartments is ideally positioned between Ware's historic town centre and its stunning waterways at the head of the beautiful Lee Valley.

In a brand new development next to the picturesque River Lea, these welcoming contemporary homes are an ideal place to kick back and enjoy life, just a short walk from Ware's vibrant town centre and with direct links to the heart of London's City.

Set alongside waterside walks and around a relaxed open air courtyard with great restaurants and shops, you'll find light and airy apartments with stunning interiors and private balconies, all designed for easy-going modern living.

Computer generated image is for illustrative purposes only, should not be relied upon and are subject to change.



Sat Nav location
SG12 9PY

This contemporary collection of SO Resi homes in a peaceful location close to Ware's charming town centre has been conceived to help you feel instantly at home.

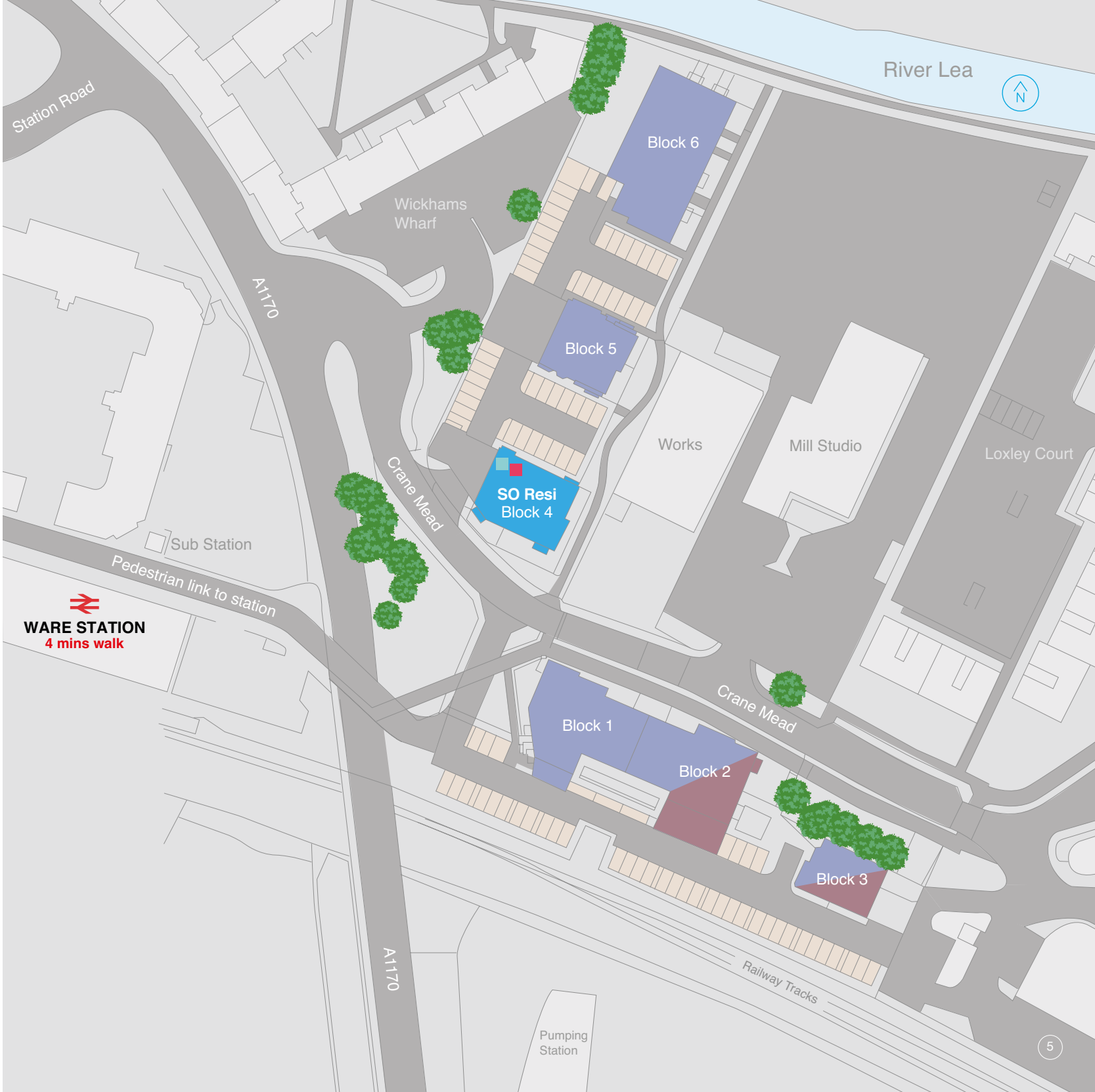
With private balconies, stylish communal areas, a shared cycle store and parking available, the architecturally sympathetic buildings are designed and crafted to the highest standards. Built around landscaped grounds and a shared space lined with handy shops and cafés, SO Resi Ware makes the good life easy.

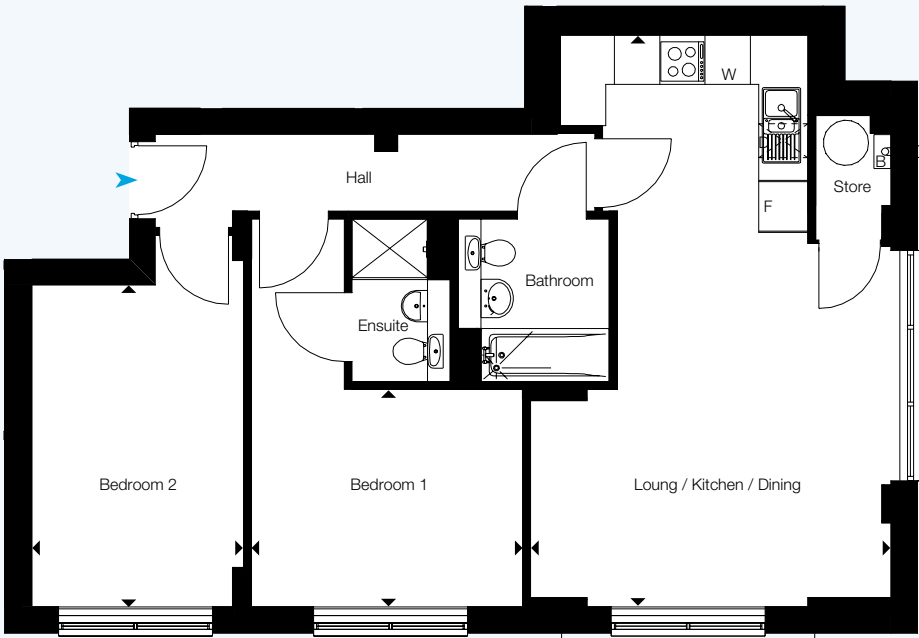
Where your needs come first.

Key

- | | |
|-------------------------------------|---------------|
| SO Resi | Cycle storage |
| Affordable Rent | Bin store |
| Future phase (including commercial) | Parking |

The site layout is intended for illustrative purposes only and is subject to change.

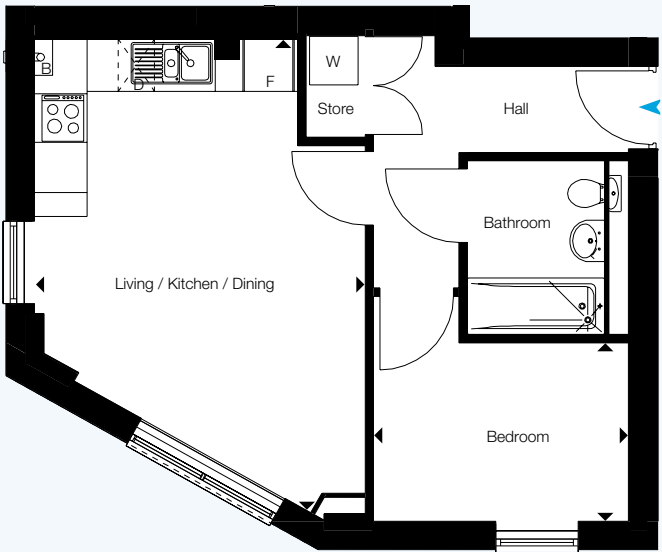




Room	Metric	Imperial	
Living/Kitchen/Dining	7.6m x 4.8m	24' 11" x 15' 9"	[B] Boiler
Bedroom 1	3.6m x 2.9m	11' 10" x 9' 6"	[D] Dishwasher
Bedroom 2	4.3m x 2.8m	14' 1" x 9' 2"	[F] Fridge/Freezer
GIA	71.8 sq m	773 sq ft	[W] Washer/Dryer

All floor plans in this brochure are for general guidance only. All room dimensions are subject to a plus/minus 5% tolerance. Measures are from plans and "as built", represent the largest cross section of each room and may vary and. Size of balconies vary between apartments of the same type. Any dimensions shown are not intended to be used for carpet sizes, appliances, spaces or items of furniture. These particulars do not constitute any part of an offer or contract with regard to the specifications.

Ground Floor



Room	Metric	Imperial	
Living/Kitchen/Dining	5.9m x 4.1m	19' 4" x 13' 5"	[B] Boiler
Bedroom	2.2m x 3.2m	7' 3" x 10' 6"	[D] Dishwasher
GIA	39.5 sq m	425 sq ft	[F] Fridge/Freezer
			[W] Washer/Dryer

All floor plans in this brochure are for general guidance only. All room dimensions are subject to a plus/minus 5% tolerance. Measures are from plans and "as built", represent the largest cross section of each room and may vary and. Size of balconies vary between apartments of the same type. Any dimensions shown are not intended to be used for carpet sizes, appliances, spaces or items of furniture. These particulars do not constitute any part of an offer or contract with regard to the specifications.

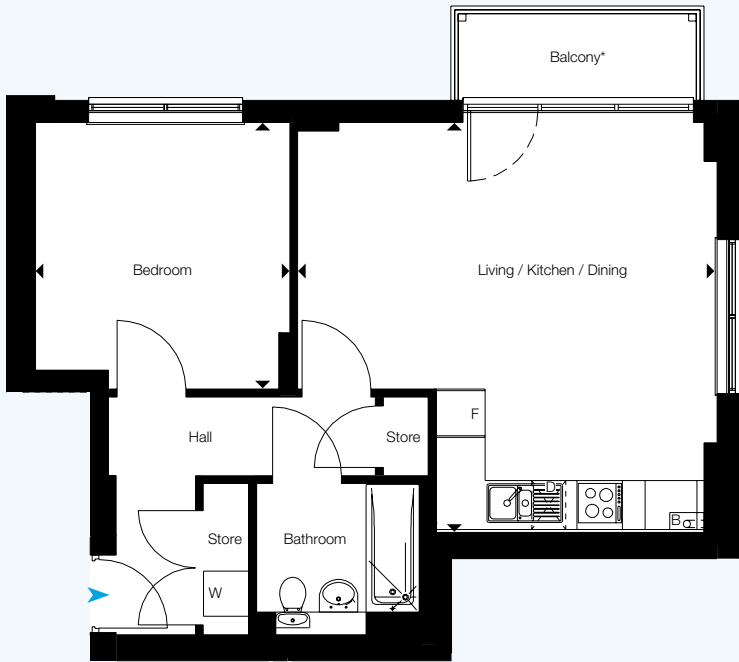
Ground Floor



Plot 4.0.3
Plot 4.1.3

Block 4
Type 19

1 bedroom

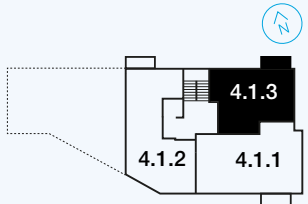


Room	Metric	Imperial	
Living/Kitchen/Dining	5.4m x 5.6m	17' 7" x 18' 3"	
Bedroom	3.3m x 3.5m	10' 8" x 11' 5"	
GIA	51.6 sq m	555 sq ft	

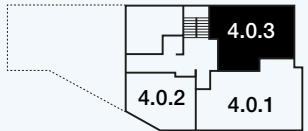
*Balcony applies to first floor flat only

All floor plans in this brochure are for general guidance only. All room dimensions are subject to a plus/minus 5% tolerance. Measures are from plans and "as built", represent the largest cross section of each room and may vary and. Size of balconies vary between apartments of the same type. Any dimensions shown are not intended to be used for carpet sizes, appliances, spaces or items of furniture. These particulars do not constitute any part of an offer or contract with regard to the specifications.

First Floor



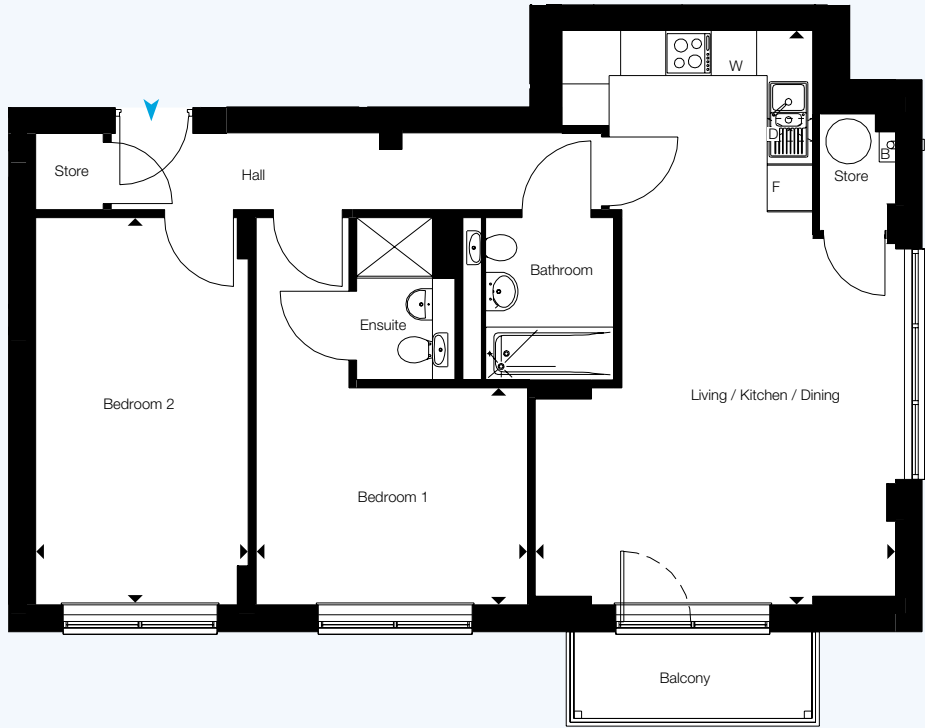
Ground Floor



Plot 4.1.1

Block 4
Type 20

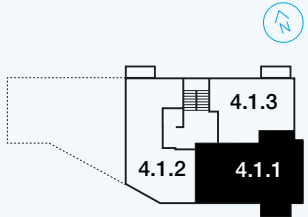
2 bedroom

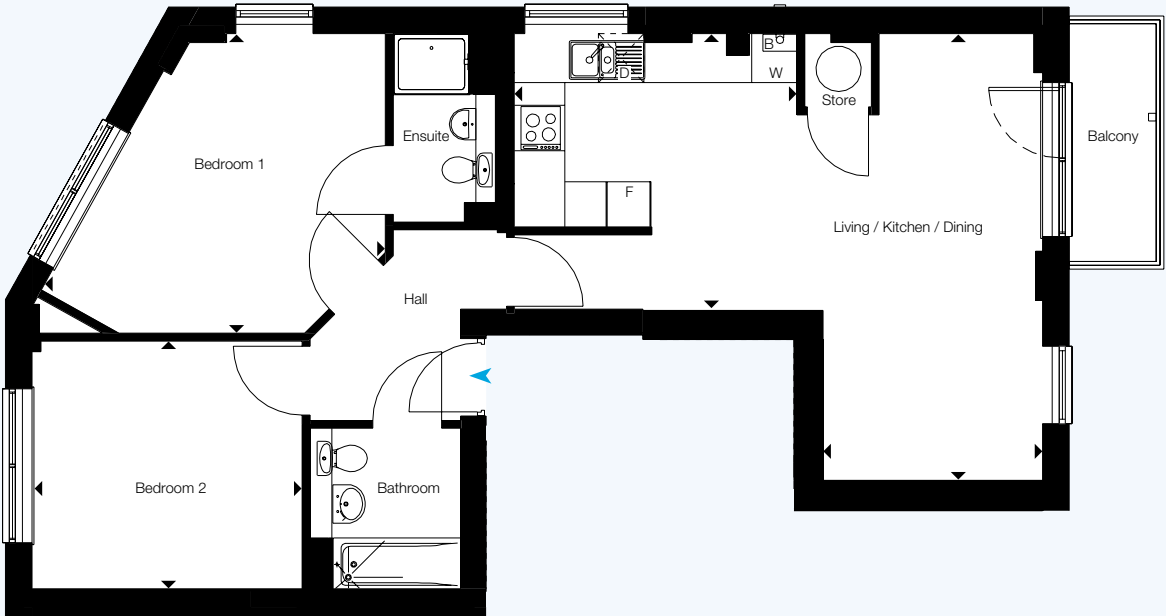


Room	Metric	Imperial	
Living/Kitchen/Dining	7.6m x 4.8m	24' 11" x 15' 9"	
Bedroom	2.9m x 3.6m	9' 5" x 11' 8"	
Bedroom	5.1m x 2.8m	16' 8" x 9' 2"	
GIA	75.3 sq m	811 sq ft	

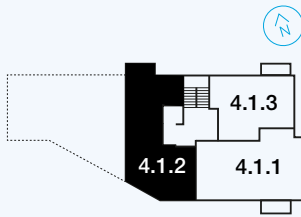
All floor plans in this brochure are for general guidance only. All room dimensions are subject to a plus/minus 5% tolerance. Measures are from plans and "as built", represent the largest cross section of each room and may vary and. Size of balconies vary between apartments of the same type. Any dimensions shown are not intended to be used for carpet sizes, appliances, spaces or items of furniture. These particulars do not constitute any part of an offer or contract with regard to the specifications.

First Floor



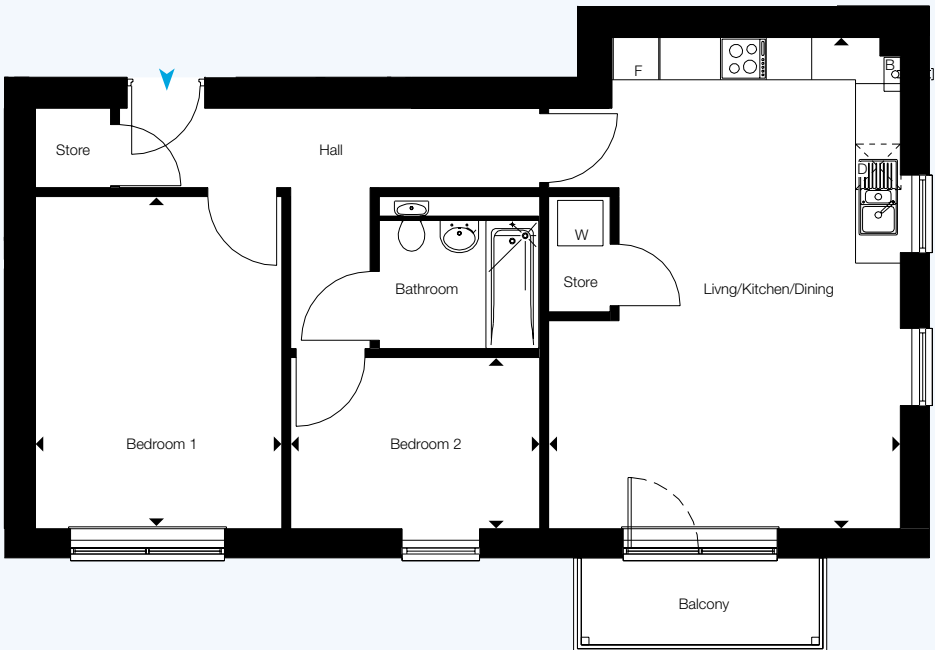


Room	Metric	Imperial	
Living/Dining	2.9m x 5.9m	9' 6" x 19' 4"	[B] Boiler
Kitchen	3.8m x 3.7m	12' 6" x 12' 2"	[D] Dishwasher
Bedroom 1	4.6m x 4.0m	15' 1" x 13' 1"	[F] Fridge/Freezer
Bedroom 2	3.5m x 3.3m	11' 6" x 10' 10"	[W] Washer/Dryer
GIA	72.2 sq m	777 sq ft	



First Floor

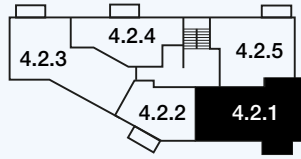
All floor plans in this brochure are for general guidance only. All room dimensions are subject to a plus/minus 5% tolerance. Measures are from plans and "as built", represent the largest cross section of each room and may vary and. Size of balconies vary between apartments of the same type. Any dimensions shown are not intended to be used for carpet sizes, appliances, spaces or items of furniture. These particulars do not constitute any part of an offer or contract with regard to the specifications.



Room	Metric	Imperial	
Living/Kitchen/Dining	6.5m x 4.7m	21' 4" x 15' 6"	[B] Boiler
Bedroom 1	4.4m x 3.3m	14' 5" x 10' 10"	[D] Dishwasher
Bedroom 2	2.3m x 3.3m	7' 7" x 10' 10"	[F] Fridge/Freezer
GIA	67 sq m	721 sq ft	[W] Washer/Dryer



Third Floor



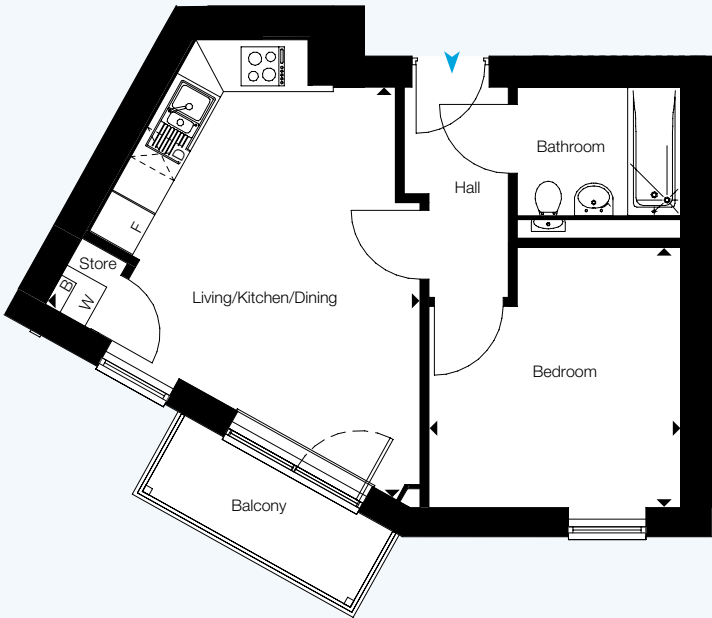
Second Floor

All floor plans in this brochure are for general guidance only. All room dimensions are subject to a plus/minus 5% tolerance. Measures are from plans and "as built", represent the largest cross section of each room and may vary and. Size of balconies vary between apartments of the same type. Any dimensions shown are not intended to be used for carpet sizes, appliances, spaces or items of furniture. These particulars do not constitute any part of an offer or contract with regard to the specifications.

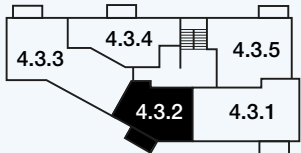
Plot 4.2.2
Plot 4.3.2

Block 4
Type 23

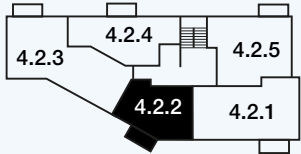
1 bedroom



Room	Metric	Imperial	
Living/Kitchen/Dining	5.5m x 5.0m	18' 1" x 16' 5"	[B] Boiler
Bedroom 1	3.4m x 3.3m	11' 2" x 10' 10"	[D] Dishwasher
GIA	39.1 sq m	421 sq ft	[F] Fridge/Freezer
			[W] Washer/Dryer



Third Floor



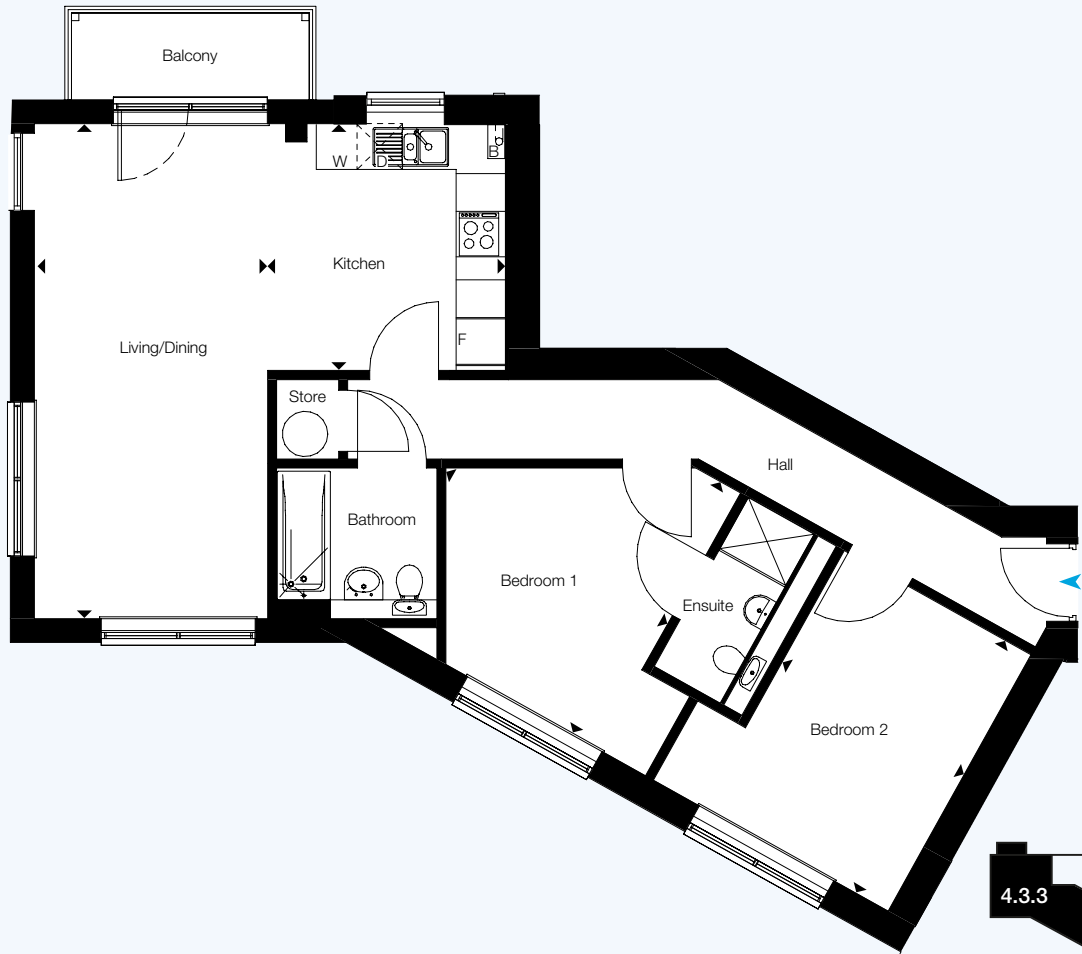
Second Floor

All floor plans in this brochure are for general guidance only. All room dimensions are subject to a plus/minus 5% tolerance. Measures are from plans and "as built", represent the largest cross section of each room and may vary and. Size of balconies vary between apartments of the same type. Any dimensions shown are not intended to be used for carpet sizes, appliances, spaces or items of furniture. These particulars do not constitute any part of an offer or contract with regard to the specifications.

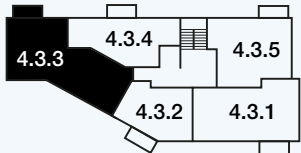
Plot 4.2.3
Plot 4.3.3

Block 4
Type 24

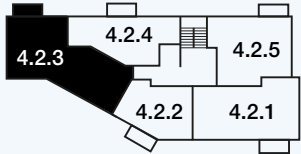
2 bedroom



Room	Metric	Imperial	
Living/Dining	6.5m x 3.1m	21' 4" x 10' 2"	[B] Boiler
Kitchen	3.2m x 3.1m	10' 5" x 10' 2"	[D] Dishwasher
Bedroom 1	3.8m x 3.1m	12' 6" x 11' 6"	[F] Fridge/Freezer
Bedroom 2	3.9m x 2.8m	12' 10" x 9' 2"	[W] Washer/Dryer
GIA	75.9 sq m	817 sq ft	



Third Floor



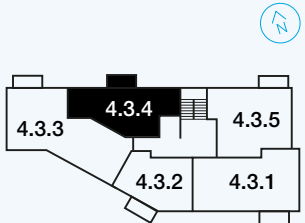
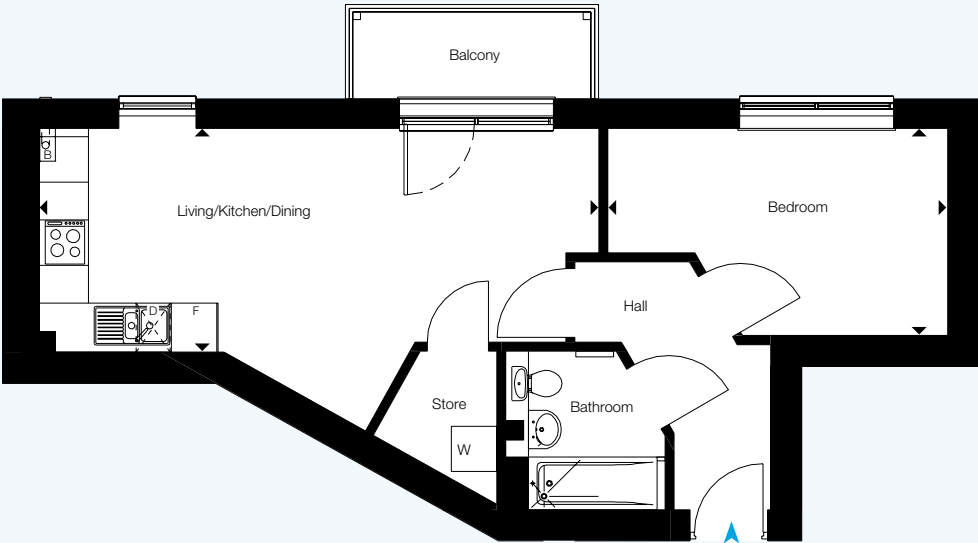
Second Floor

All floor plans in this brochure are for general guidance only. All room dimensions are subject to a plus/minus 5% tolerance. Measures are from plans and "as built", represent the largest cross section of each room and may vary and. Size of balconies vary between apartments of the same type. Any dimensions shown are not intended to be used for carpet sizes, appliances, spaces or items of furniture. These particulars do not constitute any part of an offer or contract with regard to the specifications.

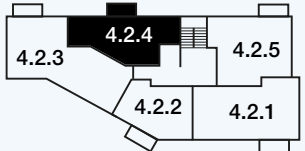
Plot 4.2.4
Plot 4.3.4

Block 4
Type 25

1 bedroom



Third Floor



Second Floor

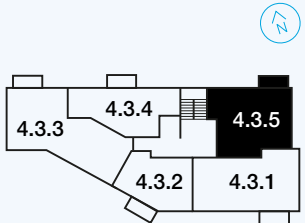
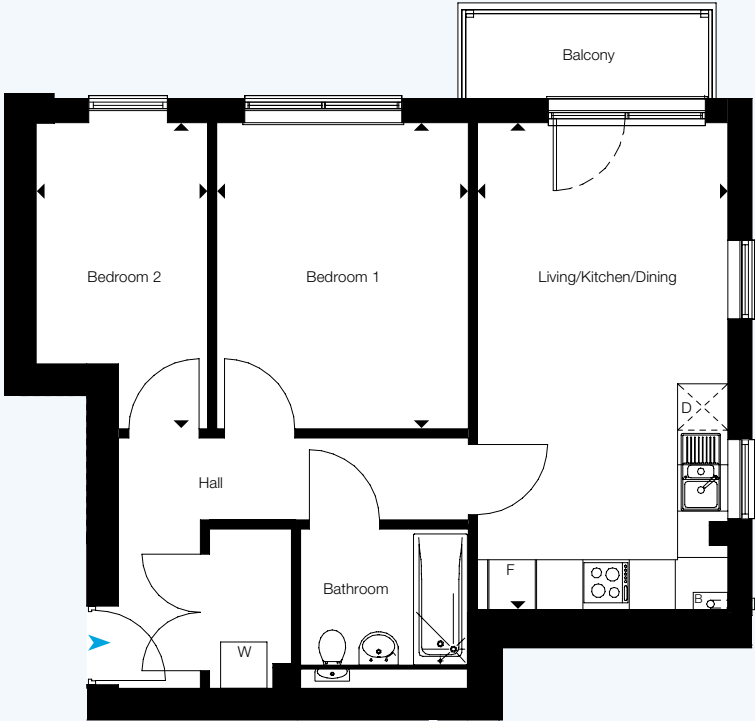
Room	Metric	Imperial	
Living/Kitchen/Dining	2.9m x 7.4m	9' 6" x 24' 3"	[B] Boiler
Bedroom 1	2.7m x 4.5m	8' 10" x 14' 11"	[D] Dishwasher
GIA	46.3 sq m	498 sq ft	[F] Fridge/Freezer
			[W] Washer/Dryer

All floor plans in this brochure are for general guidance only. All room dimensions are subject to a plus/minus 5% tolerance. Measures are from plans and "as built", represent the largest cross section of each room and may vary and. Size of balconies vary between apartments of the same type. Any dimensions shown are not intended to be used for carpet sizes, appliances, spaces or items of furniture. These particulars do not constitute any part of an offer or contract with regard to the specifications.

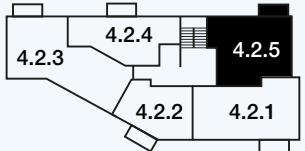
Plot 4.2.5
Plot 4.3.5

Block 4
Type 26

2 bedroom



Third Floor



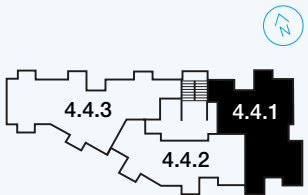
Second Floor

Room	Metric	Imperial	
Living/Kitchen/Dining	6.3m x 3.3m	20' 8" x 10' 10"	[B] Boiler
Bedroom 1	4.0m x 3.3m	13' 1" x 10' 10"	[D] Dishwasher
Bedroom 2	4.0m x 2.2m	13' 1" x 7' 3"	[F] Fridge/Freezer
GIA	58 sq m	624 sq ft	[W] Washer/Dryer

All floor plans in this brochure are for general guidance only. All room dimensions are subject to a plus/minus 5% tolerance. Measures are from plans and "as built", represent the largest cross section of each room and may vary and. Size of balconies vary between apartments of the same type. Any dimensions shown are not intended to be used for carpet sizes, appliances, spaces or items of furniture. These particulars do not constitute any part of an offer or contract with regard to the specifications.

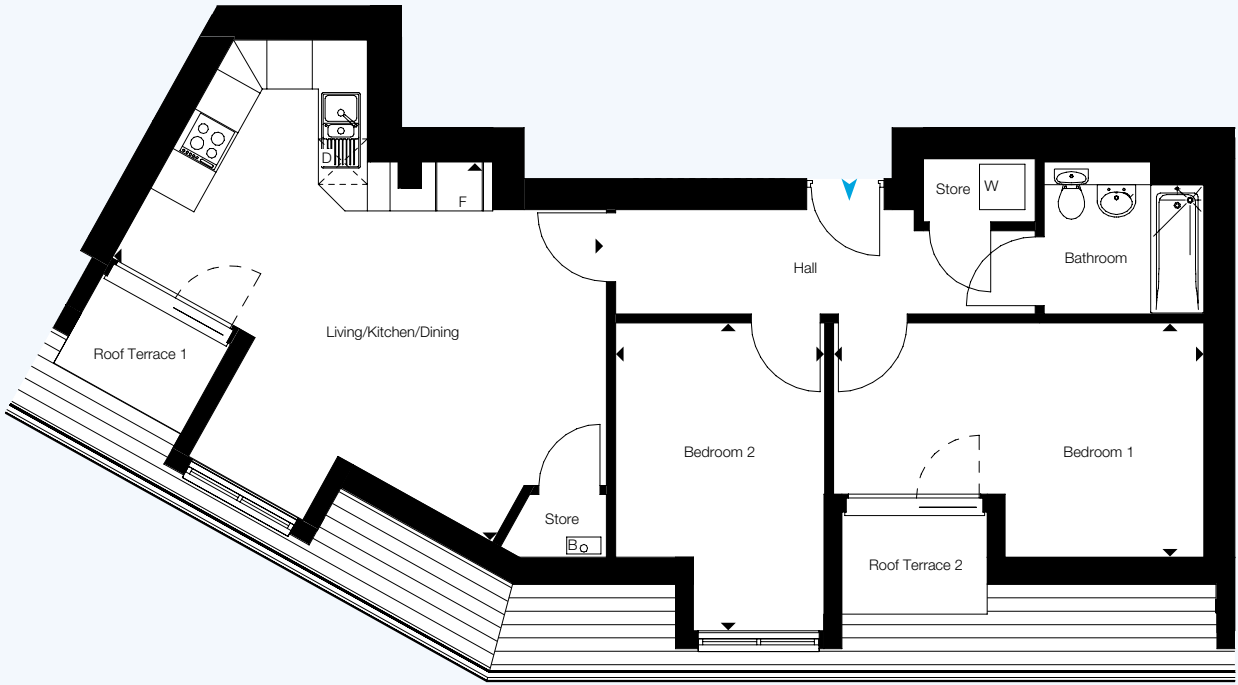


Room	Metric	Imperial	
Living/Kitchen/Dining	3.6m x 5.7m	11' 10" x 18' 8"	[B] Boiler
Bedroom 1	2.9m x 4.0m	9' 6" x 13' 1"	[D] Dishwasher
Bedroom 2	4.2m x 3.8m	13' 9" x 12' 6"	[F] Fridge/Freezer
GIA	76.3 sq m	821 sq ft	[W] Washer/Dryer



Fourth Floor

All floor plans in this brochure are for general guidance only. All room dimensions are subject to a plus/minus 5% tolerance. Measures are from plans and "as built", represent the largest cross section of each room and may vary and. Size of balconies vary between apartments of the same type. Any dimensions shown are not intended to be used for carpet sizes, appliances, spaces or items of furniture. These particulars do not constitute any part of an offer or contract with regard to the specifications.

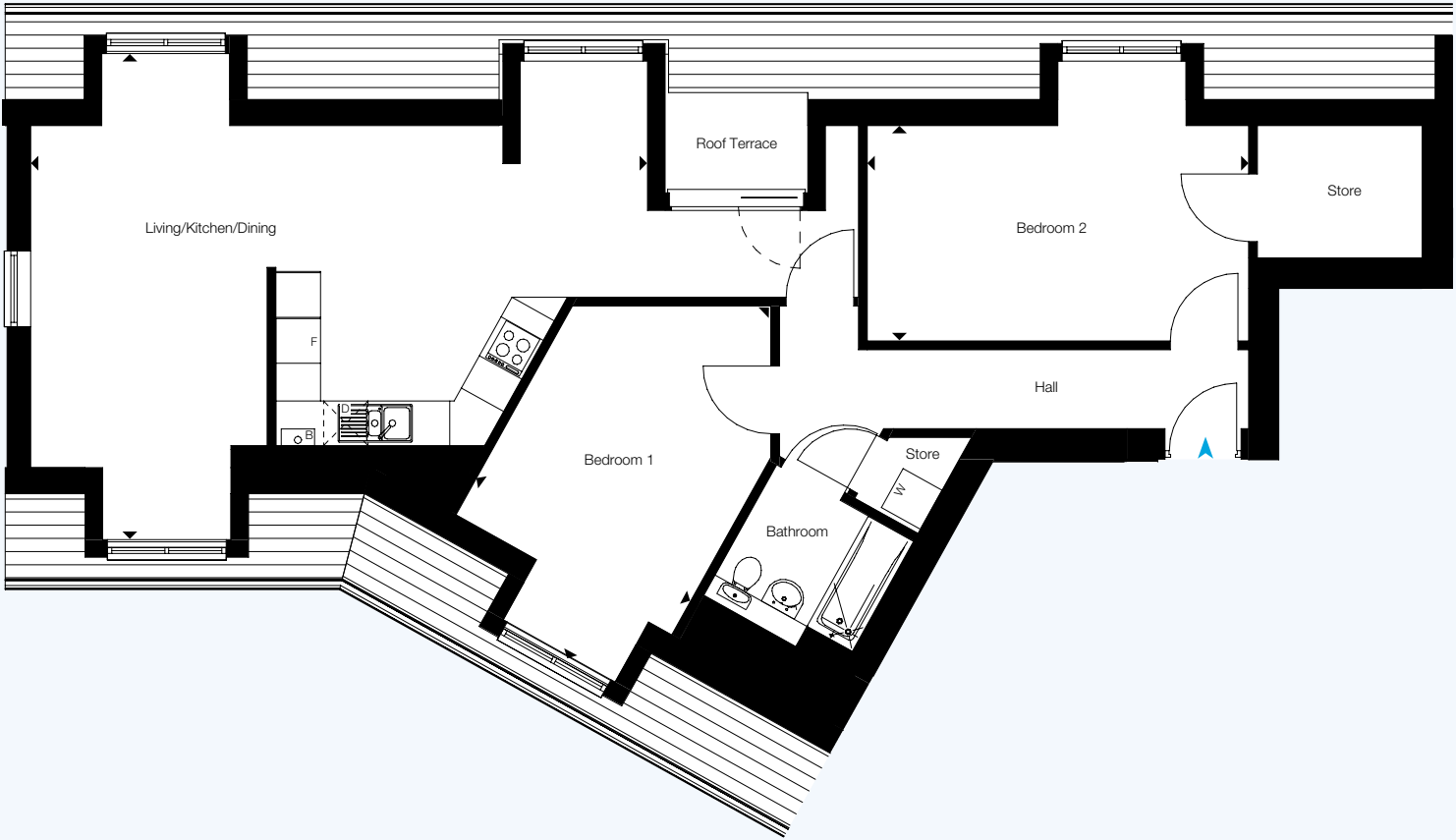


Room	Metric	Imperial	
Living/Kitchen/Dining	5.0m x 6.5m	16' 5" x 21' 4"	[B] Boiler
Bedroom 1	3.1m x 4.9m	10' 2" x 16' 1"	[D] Dishwasher
Bedroom 2	4.0m x 2.8m	13' 1" x 9' 2"	[F] Fridge/Freezer
GIA	66.8 sq m	719 sq ft	[W] Washer/Dryer



Fourth Floor

All floor plans in this brochure are for general guidance only. All room dimensions are subject to a plus/minus 5% tolerance. Measures are from plans and "as built", represent the largest cross section of each room and may vary and. Size of balconies vary between apartments of the same type. Any dimensions shown are not intended to be used for carpet sizes, appliances, spaces or items of furniture. These particulars do not constitute any part of an offer or contract with regard to the specifications.



Room	Metric	Imperial
Living/Kitchen/Dining	6.5m x 8.3m	21' 3" x 27' 3"
Bedroom 1	5.4m x 3.3m	17' 9" x 10' 10"
Bedroom 2	2.9m x 5.1m	9' 6" x 16' 9"
GIA	94.5 sq m	1,017 sq ft

- [B] Boiler
- [D] Dishwasher
- [F] Fridge/Freezer
- [W] Washer/Dryer



Fourth Floor

All floor plans in this brochure are for general guidance only. All room dimensions are subject to a plus/minus 5% tolerance. Measures are from plans and "as built", represent the largest cross section of each room and may vary and. Size of balconies vary between apartments of the same type. Any dimensions shown are not intended to be used for carpet sizes, appliances, spaces or items of furniture. These particulars do not constitute any part of an offer or contract with regard to the specifications.



Images are from a previous SO Resi show apartment and for illustrative purposes only.





With SO Resi, you buy your own home in your own way. You start with a share that's right for you, then you can buy extra shares over time, so it's all manageable and suits your income.

You start by buying between 25% and 75% of your SO Resi home. That means your monthly mortgage payments and deposit are smaller than they would be if you bought your home outright. There are two other monthly payments for your SO Resi home. One is the SO Resi payment for the share of your home that Metropolitan Thames Valley owns. The other is the service charge, which pays to look after the building you live in. There are also the usual other costs, like household utility bills. You can choose to buy a bigger share of your SO Resi home in the future, and even own 100%. The bigger the share you own, the lower your SO Resi payment will be.

You can sell your share at any time if you decide to move on.

We're here to help

Whatever your needs, we're on hand to help at every stage. First we'll help you understand all the costs and work out what's affordable for you. If you decide to go ahead, we'll be there to answer your questions. And in the future, we can help you with buying a bigger share of your home, or with selling up if it's time for a change.

**Email sales@soresi.co.uk
or visit www.soresi.co.uk**

Metropolitan Thames Valley has taken all reasonable care in the preparation of the information given in this brochure. However, this information is subject to change and has been prepared solely for the purpose of providing general guidance. Metropolitan Thames Valley does not warrant the accuracy or completeness of this information. Particulars are given for illustrative purposes only. Metropolitan Thames Valley undertakes continuous product development and any information given relating to our products may vary from time to time. The information and particulars set out within this brochure do not constitute part of a formal offer invitation or contract to acquire the relevant property. For the reasons mentioned above, no information contained in this brochure is to be relied upon. In particular, all plans, prospectus, descriptions, dimensions and measurements are approximate and provided for guidance only. Such information is given without responsibility on the part of Metropolitan Thames Valley.

