



London Road,
Sevenoaks, TN13 1FH

MOAT PROUDLY INTRODUCES QUINTON COURT

A COLLECTION OF ONE BEDROOM
APARTMENTS FOR SHARED OWNERSHIP
AT THIS EXCLUSIVE SEVENOAKS ADDRESS

Quinton Court is a unique opportunity
for first-time buyers to own a stunning
one-bedroom apartment in the heart of
the North Downs.

The apartments are situated in a prime
Sevenoaks location; offering luxury living
within walking distance to Sevenoaks
train station and the high street.





Sevenoaks high street



Knole Park



Sevenoaks train station

Sevenoaks is a comfortable corner of Kent just 22 minutes from London, boasting a quaint character and magical outdoor spaces. With a whole host of amenities along with the vast acres of parks and open space, there's no question why Sevenoaks is ranked as one of the best places to live in the UK.



Castle Farm Lavender Fields

THE BEST OF TOWN AND COUNTRY

With views of dew-kissed parks on early mornings and glass-clear waterways tickled by weeping willows, Sevenoaks is romantic if not only for its natural beauty. Knole Park is a Sevenoaks landscape typical of all the charms of the Kent countryside.

Feeling a lifetime away from the big city, Sevenoaks is an escape with everything you could need right there. Home to its very own town centre with a slightly different pace of life, shopping, food and leisure in the centre of Sevenoaks is something of a laidback and pleasurable excursion. With all your favourite high street stores, there's something about the tudoresque architecture that infuses culture and curiosity. And with its number of independent cafes and restaurants, this town has certainly carved out its own identity in a perfect blend of rural and urban life.





*Map is for illustrative purposes only to highlight places of interest.

A WORLD OF
POSSIBILITIES ON
YOUR DOORSTEP



TRAVEL	EXPLORE
1 Sevenoaks train station	1 Knole Park
2 Sevenoaks bus station	2 Bradbourne Lakes
	3 Montreal Park
ENJOY	SHOP
1 The Chequers	1 M&S
2 Hattusa	2 Lidl
3 Marco	3 Waitrose
4 Giggling Squid	4 Tesco Superstore
5 Malabar Coffee House	5 Bligh's Meadow Shopping Centre
6 Otts' Coffee House & Kitchen	
7 Kazoku Pan Asian & Suchi	
8 Pizza Express	
9 Wagamama	
10 Bill's	
11 Ephesus Cocktails and Meze	
12 Halfway House	





THE COMMUTER'S CHOICE

Sevenoaks is a popular place for commuters to settle - and it's easy to understand why. Fast services to London Bridge, Waterloo East, Charing Cross and Cannon Street run frequently from Sevenoaks train station - just a 9 minute walk from Quinton Court. It's also easy to get to Tunbridge Wells and Canterbury, plus Blackfriars and St Albans.



Charing Cross train station

Arriva's bus routes connect Sevenoaks with towns around Kent, such as Kemsing, Tunbridge Wells and Gravesend.

For those times when you just want to get lost in Kent's green spaces and beaches slightly further afield, car rental hire is available from Enterprise's local Sevenoaks branch.



Walk

04

MINUTES
TOWN CENTRE

09

MINUTES
SEVENOAKS STATION

25

MINUTES
KNOLE PARK



Train

19

MINUTES DIRECT
TUNBRIDGE WELLS

22

MINUTES DIRECT
LONDON BRIDGE

28

MINUTES DIRECT
LONDON WATERLOO EAST

35

MINUTES DIRECT
LONDON CHARING CROSS

44

MINUTES
CANARY WHARF



Bus

401

TO
CHIPSTEAD

02

TO
BAT & BALL TRAIN STATION

402

TO
TUNBRIDGE WELLS

01

TO
DUNTON GREEN

306/308

TO
BLUEWATER

*Distances, Walking times and bus times are taken from google maps. Train times are taken from National Rail and TfL

READY-MADE APARTMENTS DESIGNED FOR MODERN LIVING

Award-winning developer, Berkeley Homes, has designed and built these homes to the highest standard. Quality and precision are at the heart of every Berkeley home.

The luxurious communal courtyard invites you to relax at your leisure to the beautiful background of the water feature.



These contemporary homes feature heritage-inspired details, such as bay windows, Juliet balconies and terraces, as well as integrated kitchens with appliances and storage space.

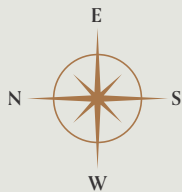
SPECIFICATION

- Fully fitted Commodore Infinity Range in Cashmere with Duropal laminate worktop in Rabac and glass splashback.
- Integrated Beko appliances, including single electric oven, touch control ceramic hob, extractor hood, fridge freezer and free standing washer dryer
- Fully fitted bathroom with bath, shower, screen, mirror and chrome heated towel rail
- Lucia Blanco Brillo tiles to bathroom
- Downlights to kitchen and bathroom. Pendants to all other rooms.
- Kingsmead Ayrshire 80/20 twist carpet to bedrooms. Tarkett Contract Wood vinyl in Oak Grey to kitchen, lounge/diner, bathroom and hallway.
- Central heating
- Juliet balcony or private terrace* to specific apartments
- Premier 10 year warranty

*Terrace is 'right to use' only. Specification is subject to change - please speak to Louise Gramston at Moat for further details.

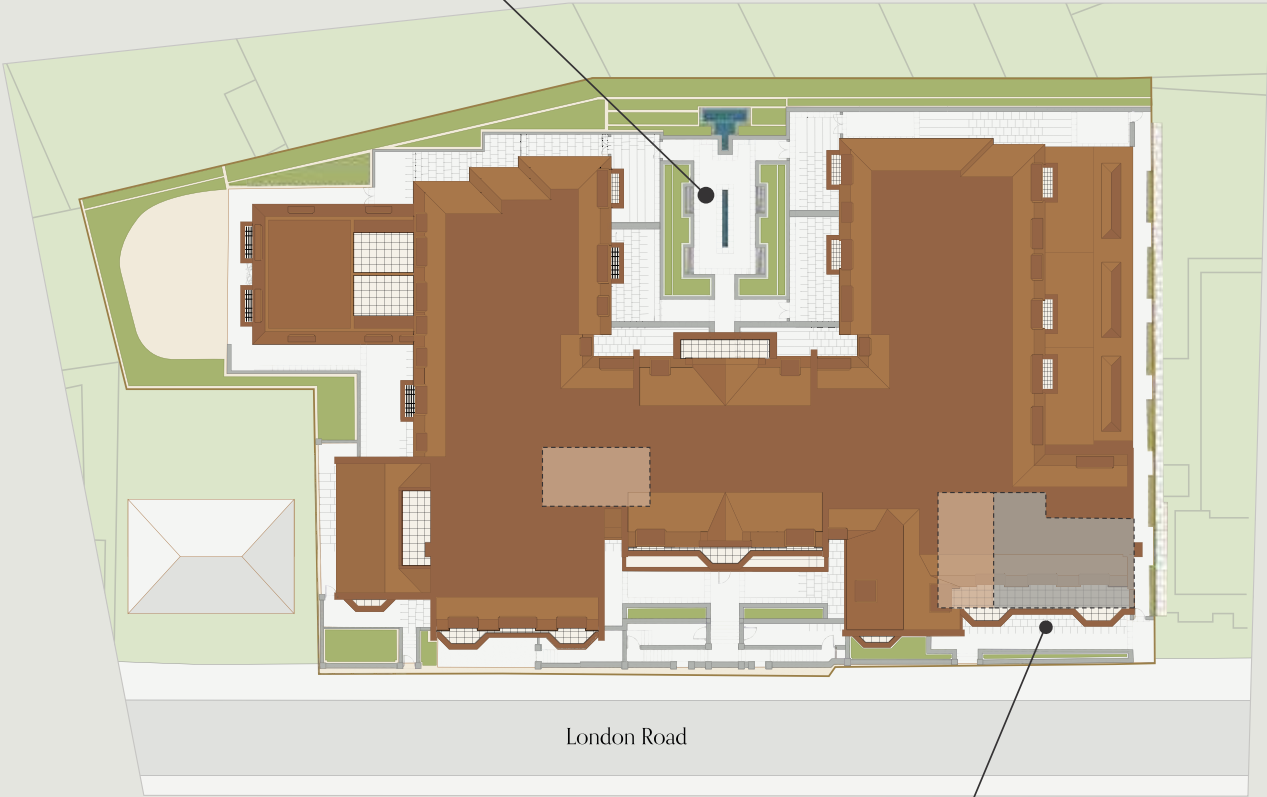


QUINTON COURT
SITE PLAN



4 minute walk
Town centre

Communal Courtyard



Commercial Space

9 minute walk
Sevenoaks station

Bin store
(upper basement)

Bike store
(upper basement)

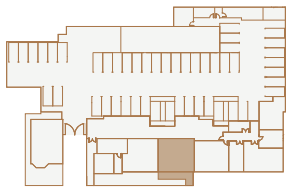
Moat supports the development of mixed tenure communities and is proud to provide homes for affordable rent and shared ownership at Quinton Court. We may change the tenure of some properties subject to demand. Plans do not highlight the gradient of outside space or location of manhole covers, sheds or paving.

ONE BEDROOM
APARTMENT

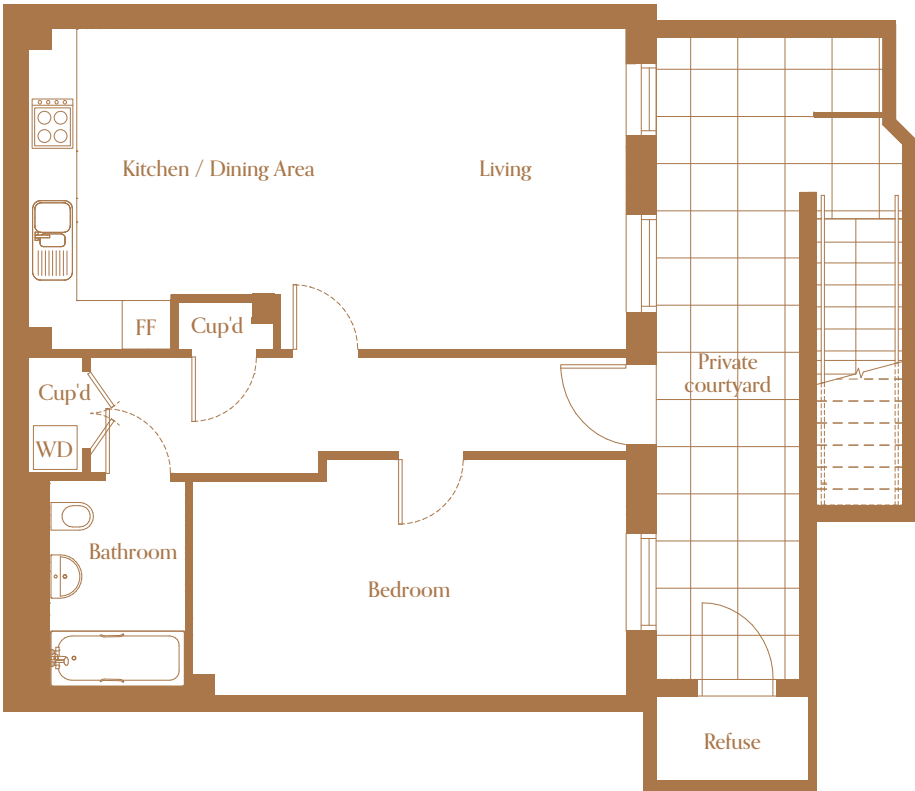
102 London Road,
Sevenoaks, Kent, TN13 1BA


TOTAL SQM: 64.8

Lower ground level



KITCHEN / DINING 3.7m x 4.0m	LIVING 3.9m x 4.0m	BEDROOM 5.4m x 2.9m	PRIVATE COURTYARD 9.4m x 1.8m
---------------------------------	-----------------------	------------------------	----------------------------------



Energy Efficiency Rating	
Very environmentally friendly - lower CO2 emissions	
(92 plus) A	82
(81-91) B	
(69-80) C	
(55-68) D	
(39-54) E	
(21-38) F	
(01-20) G	
Not environmentally friendly - higher CO2 emissions	
England & Wales	EU Directive 2002/91/EC 

Environmental Impact (CO2) Rating	
Very environmentally friendly - lower CO2 emissions	
92 (44-51) A	86
81 (91) B	
69 (80) C	
55 (68) D	
39 (54) E	
21 (38) F	
00 (20) G	
Not environmentally friendly - higher CO2 emissions	
England & Wales	EU Directive 2002/91/EC

Cup'd - Cupboard, FF - Fridge Freezer, WD - Washer Dryer

Floor plans shown are indicative only. All room sizes are approximate with maximum dimensions of finished items of furniture. Room layouts may be subject to minor modifications. Furniture, kitchen and bathroom layouts shown are indicative only. Measurement at widest point.

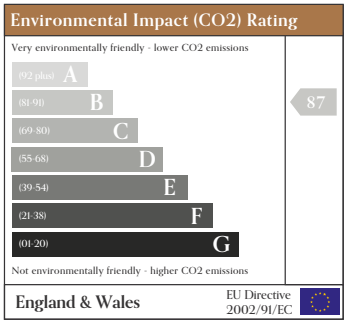
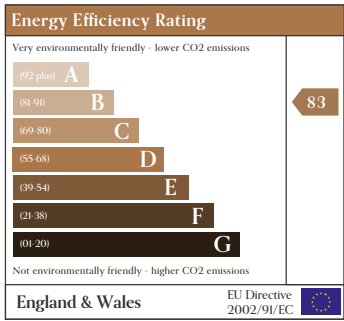
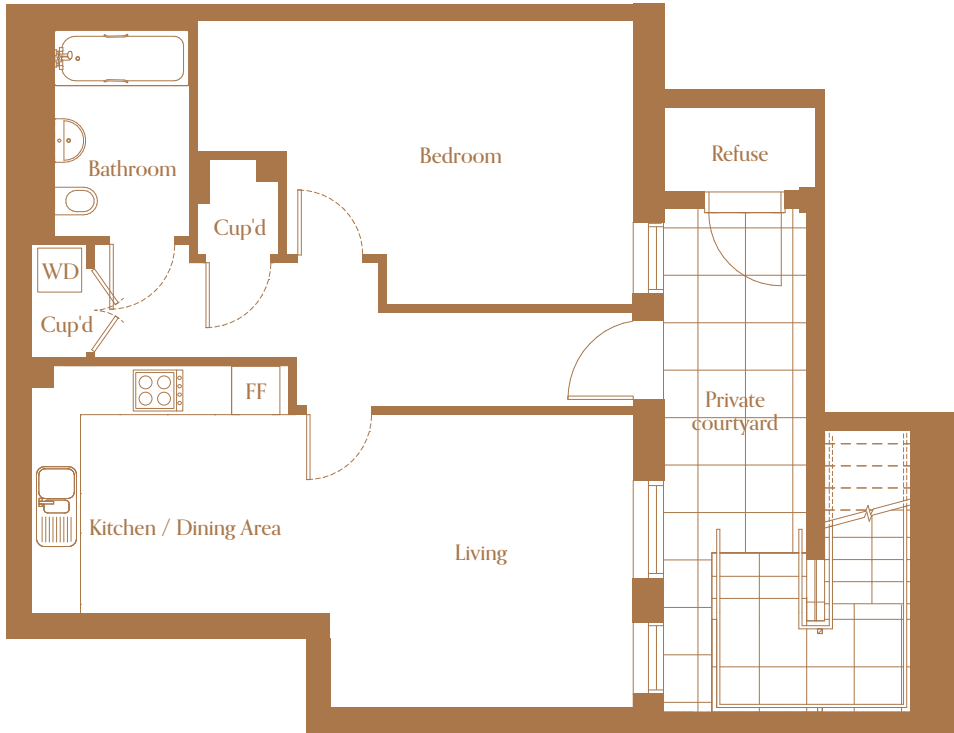
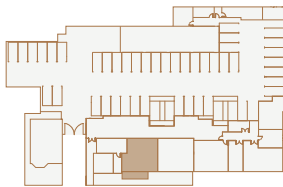
ONE BEDROOM
APARTMENT

104 London Road,
Sevenoaks, Kent, TN13 1BA

TOTAL SQM: 61.9

KITCHEN / DINING	LIVING	BEDROOM	PRIVATE COURTYARD
3.7m x 3.1m	3.8m x 3.6m	5.5m x 3.5m	7.6m x 1.8m

Lower ground level



Cup'd - Cupboard, FF - Fridge Freezer, WD - Washer Dryer

Floor plans shown are indicative only. All room sizes are approximate with maximum dimensions of finished items of furniture. Room layouts may be subject to minor modifications. Furniture, kitchen and bathroom layouts shown are indicative only*. Measurement at widest point.

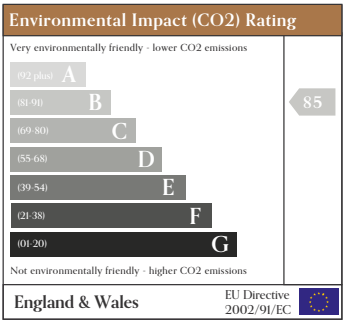
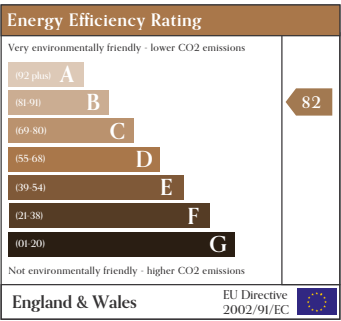
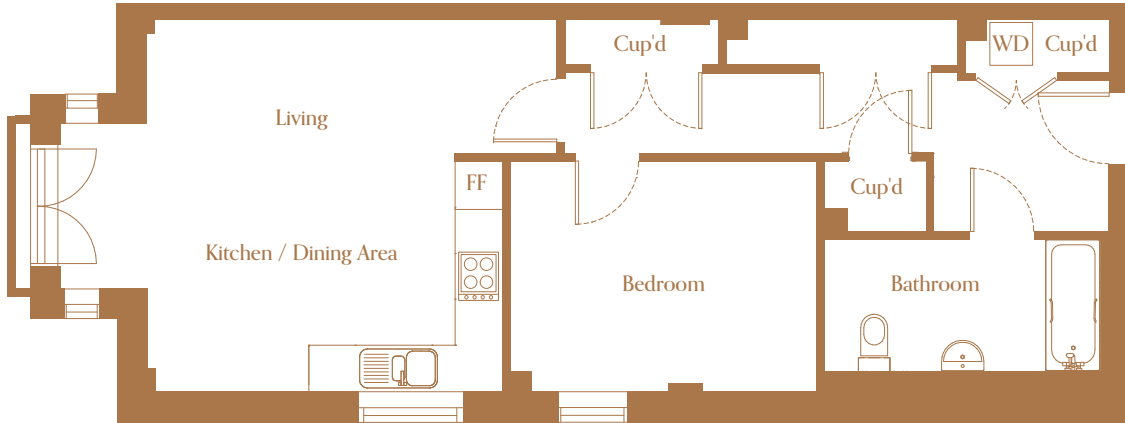
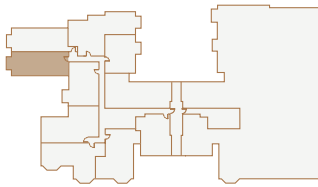
ONE BEDROOM
APARTMENT

Apartment 6 Quinton Court, 100 London
Road, Sevenoaks, Kent, TN13 1FH

TOTAL SQM: 63.2

KITCHEN / DINING	LIVING	BEDROOM
2.5m x 4.8m	3.2m x 4.8m	3.9m x 2.9m

Ground floor



Cup'd - Cupboard, FF - Fridge Freezer, WD - Washer Dryer

Floor plans shown are indicative only. All room sizes are approximate with maximum dimensions of finished items of furniture. Room layouts may be subject to minor modifications. Furniture, kitchen and bathroom layouts shown are indicative only*. Measurement at widest point.

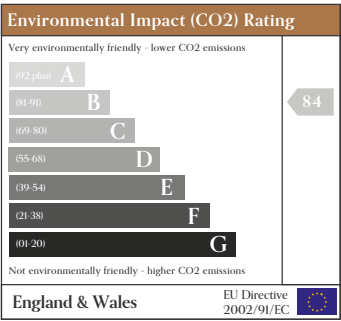
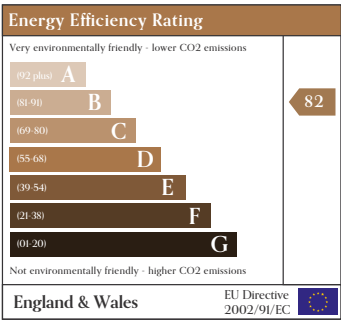
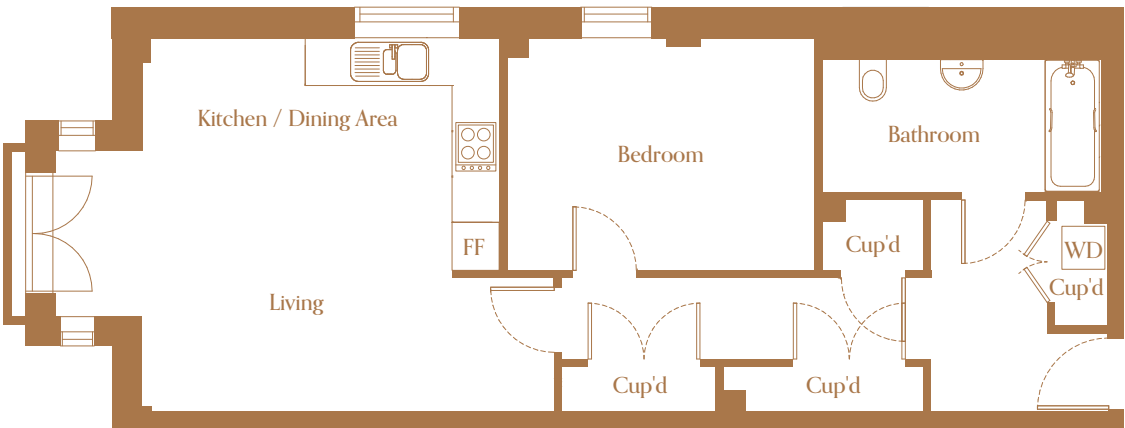
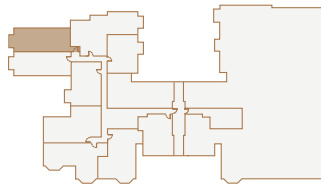
ONE BEDROOM
APARTMENT

Apartment 7 Quinton Court, 100 London Road, Sevenoaks, Kent, TN13 1FH

TOTAL SQM: 63.2

KITCHEN / DINING	LIVING	BEDROOM
2.5m x 4.8m	3.2m x 4.8m	3.9m x 2.9m

Ground floor



Cup'd - Cupboard, FF - Fridge Freezer, WD - Washer Dryer

Floor plans shown are indicative only. All room sizes are approximate with maximum dimensions of finished items of furniture. Room layouts may be subject to minor modifications. Furniture, kitchen and bathroom layouts shown are indicative only. Measurement at widest point.

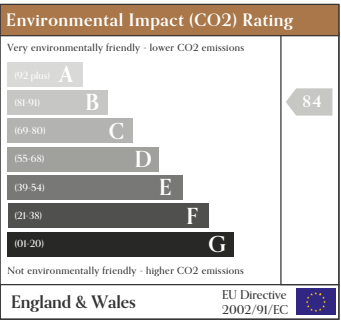
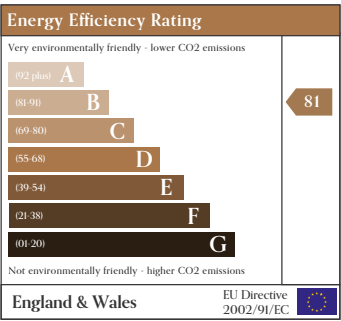
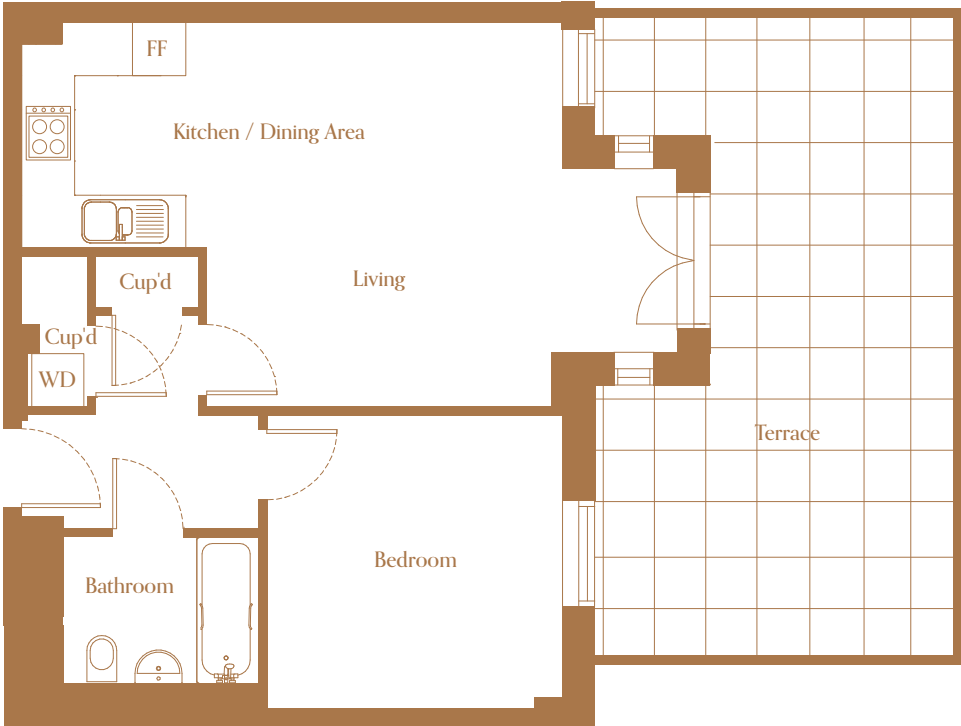
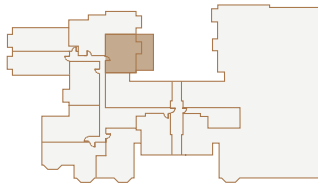
ONE BEDROOM
APARTMENT

Apartment 9 Quinton Court, 100 London Road, Sevenoaks, Kent, TN13 1FH

TOTAL SQM: 53.1

KITCHEN / DINING	LIVING	BEDROOM	TERRACE
2.2m x 2.6m	5.4m x 4.5m	3.4m x 3.4m	4.1m x 7.7m

Ground floor



Cup'd - Cupboard, FF - Fridge Freezer, WD - Washer Dryer

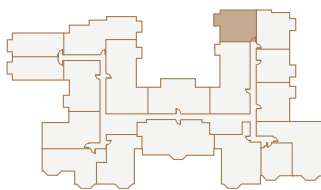
Floor plans shown are indicative only. All room sizes are approximate with maximum dimensions of finished items of furniture. Room layouts may be subject to minor modifications. Furniture, kitchen and bathroom layouts shown are indicative only. Measurement at widest point.

ONE BEDROOM
APARTMENT

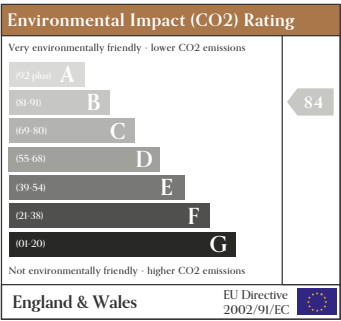
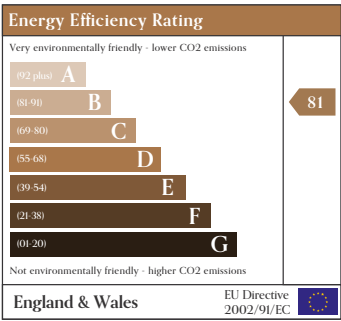
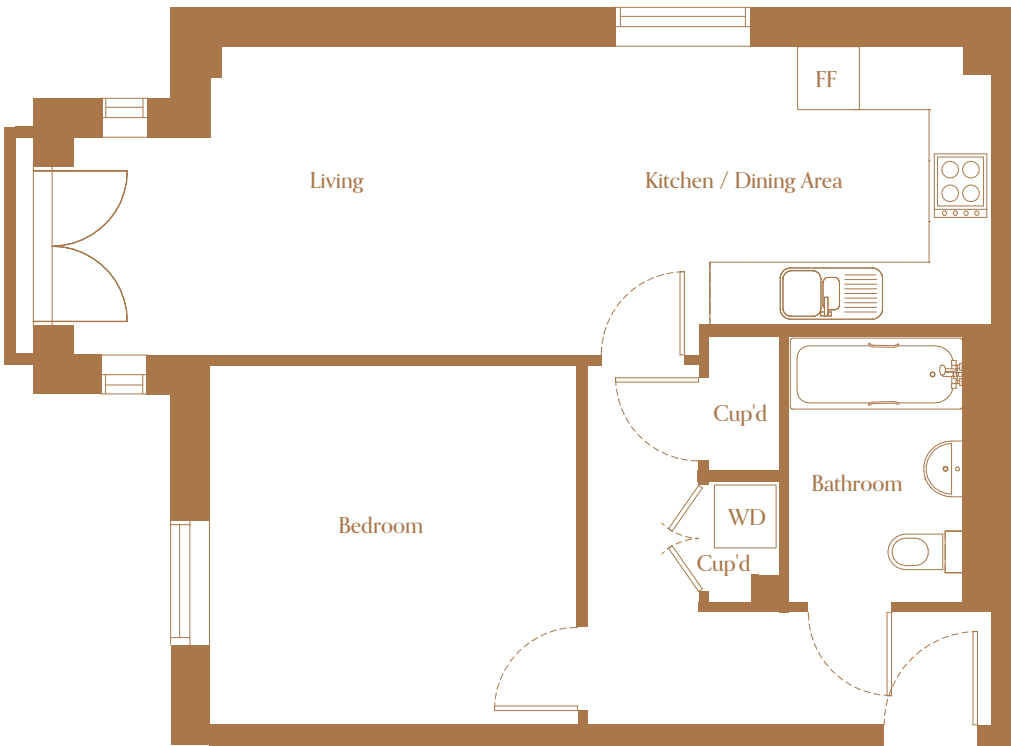
Apartment 21 & Apartment 39 Quinton Court,
100 London Road, Sevenoaks, Kent, TN13 1FH

TOTAL SQM: 54.9

Apartment 21 First floor
Apartment 39 Second floor



KITCHEN / DINING	LIVING	BEDROOM
3.9m x 2.8m	5.3m x 3.0m	3.6m x 3.6m



Cup'd - Cupboard, FF - Fridge Freezer, WD - Washer Dryer

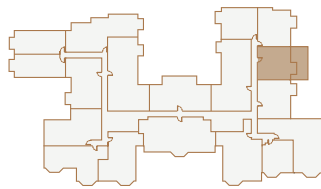
Floor plans shown are indicative only. All room sizes are approximate with maximum dimensions of finished items of furniture. Room layouts may be subject to minor modifications. Furniture, kitchen and bathroom layouts shown are indicative only*. Measurement at widest point.

ONE BEDROOM
APARTMENT

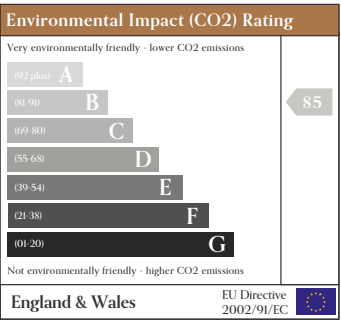
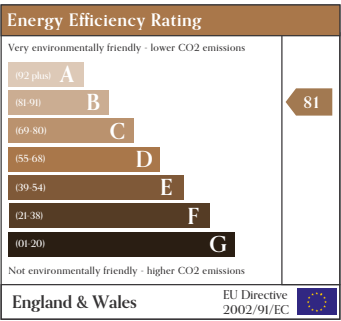
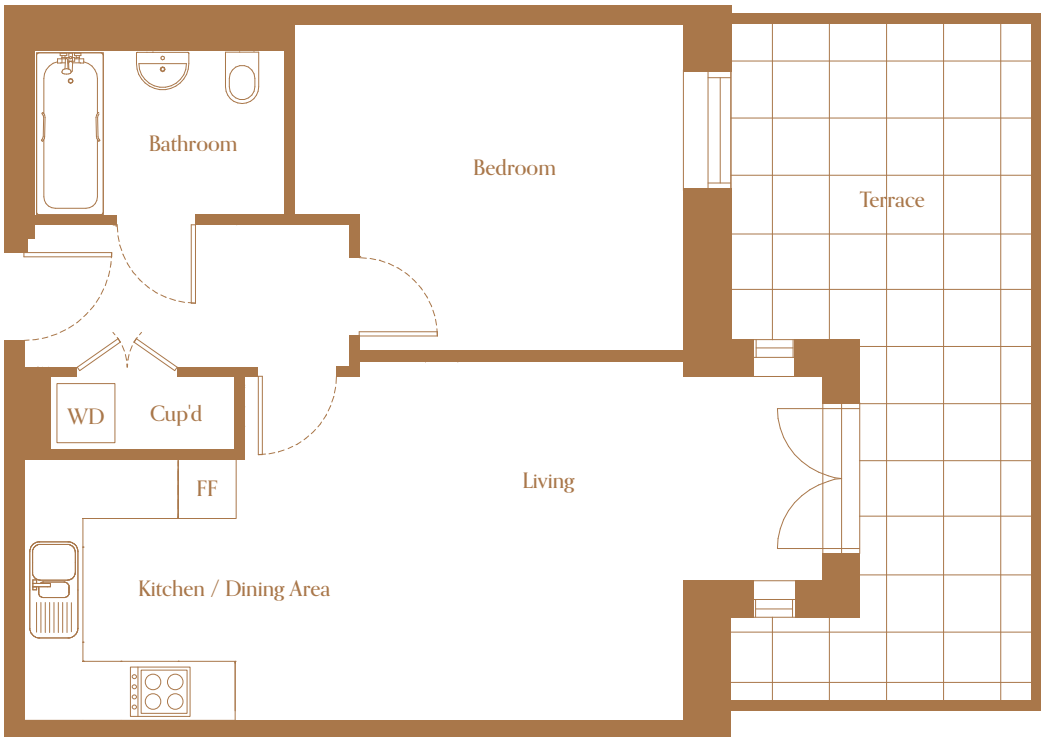
Apartment 23 Quinton Court, 100 London
Road, Sevenoaks, Kent, TN13 1FH

TOTAL SQM: 54.2

First floor



KITCHEN / DINING	LIVING	BEDROOM	TERRACE
2.3m x 2.7m	6.0m x 3.7m	4.1m x 3.4m	3.4m x 7.2m



Cup'd - Cupboard, FF - Fridge Freezer, WD - Washer Dryer

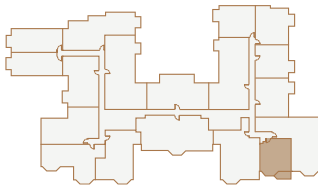
Floor plans shown are indicative only. All room sizes are approximate with maximum dimensions of finished items of furniture. Room layouts may be subject to minor modifications. Furniture, kitchen and bathroom layouts shown are indicative only*. Measurement at widest point.

ONE BEDROOM
APARTMENT

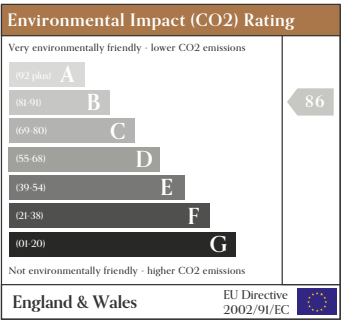
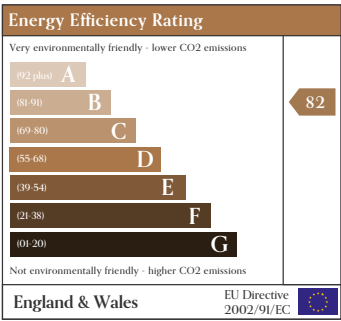
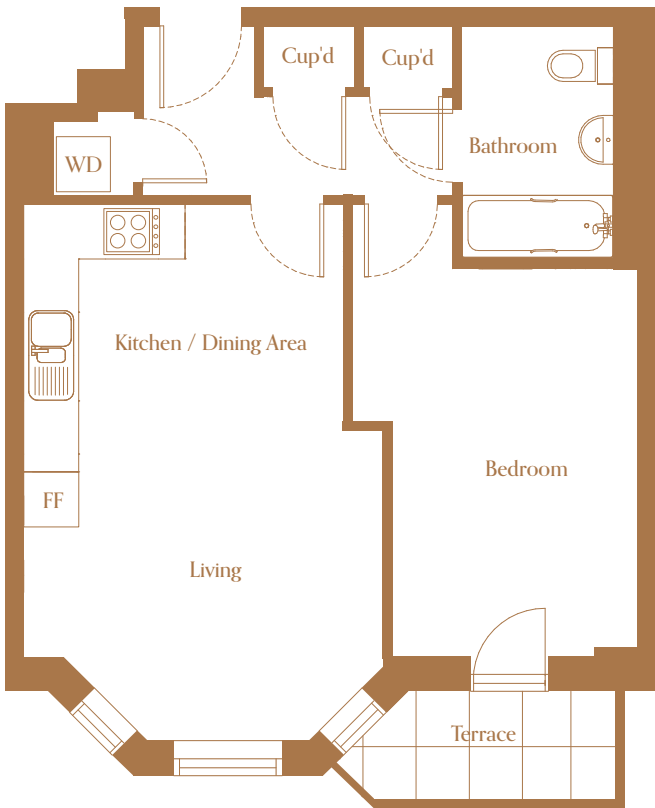
Apartment 26 Quinton Court, 100 London
Road, Sevenoaks, Kent, TN13 1FH

TOTAL SQM: 50.8

First floor



KITCHEN / DINING 3.6m x 3.6m	LIVING 2.4m x 4.0m	BEDROOM 4.4m x 2.7m	TERRACE 2.7m x 1.2m
---------------------------------	-----------------------	------------------------	------------------------



Cup'd - Cupboard, FF - Fridge Freezer, WD - Washer Dryer

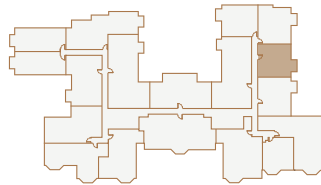
Floor plans shown are indicative only. All room sizes are approximate with maximum dimensions of finished items of furniture. Room layouts may be subject to minor modifications. Furniture, kitchen and bathroom layouts shown are indicative only. Measurement at widest point.

ONE BEDROOM
APARTMENT

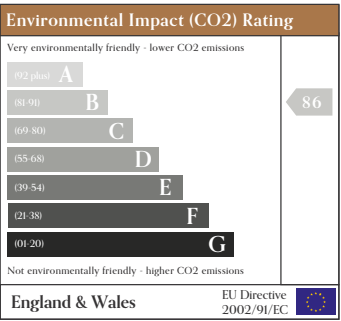
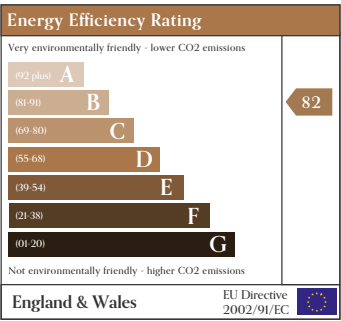
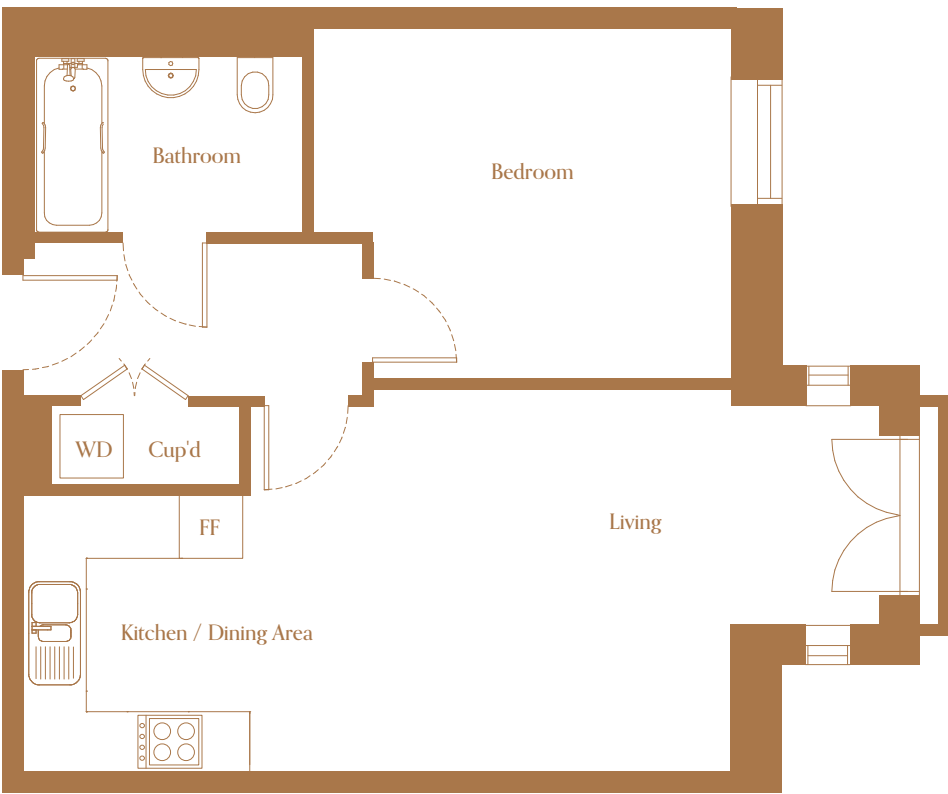
Apartment 41 Quinton Court, 100 London
Road, Sevenoaks, Kent, TN13 1FH

TOTAL SQM: 54.0

Second floor



KITCHEN / DINING 2.2m x 2.7m	LIVING 6.3m x 3.7m	BEDROOM 4.1m x 3.4m
---------------------------------	-----------------------	------------------------



Cup'd - Cupboard, FF - Fridge Freezer, WD - Washer Dryer

Floor plans shown are indicative only. All room sizes are approximate with maximum dimensions of finished items of furniture. Room layouts may be subject to minor modifications. Furniture, kitchen and bathroom layouts shown are indicative only. Measurement at widest point.



Contact us on:

louise.gramston@moat.co.uk

07799 112 037

moathomes.co.uk/quinton-court

CGIs are indicative only. Eligibility criteria applies for the homes at Quinton Court.
Priority will be given to people who live or work in Sevenoaks.
Moat Homes Limited is a charitable housing association.

 **Moat**homes