



Persona Homes

by Home Group

INSIGNIA PLACE

WELLINGTON STREET, WOOLWICH

2 bedroom apartments

A collection of two bedroom apartments available through Shared ownership minutes from Woolwich Arsenal National Rail and DLR station and well connected to central London and beyond.

These contemporary apartments are the last of their kind at Insignia Place. Located in the vibrant district of Woolwich in the Royal Borough of Greenwich, Insignia Place is just a stone's throw away from the River Thames and Greenwich's beautiful green parks.



Contact us:

T: 0800 030 8888

E: contactus@yourpersonahome.com

W: yourpersonahome.com

Wellington Street, London, SE18 6HO

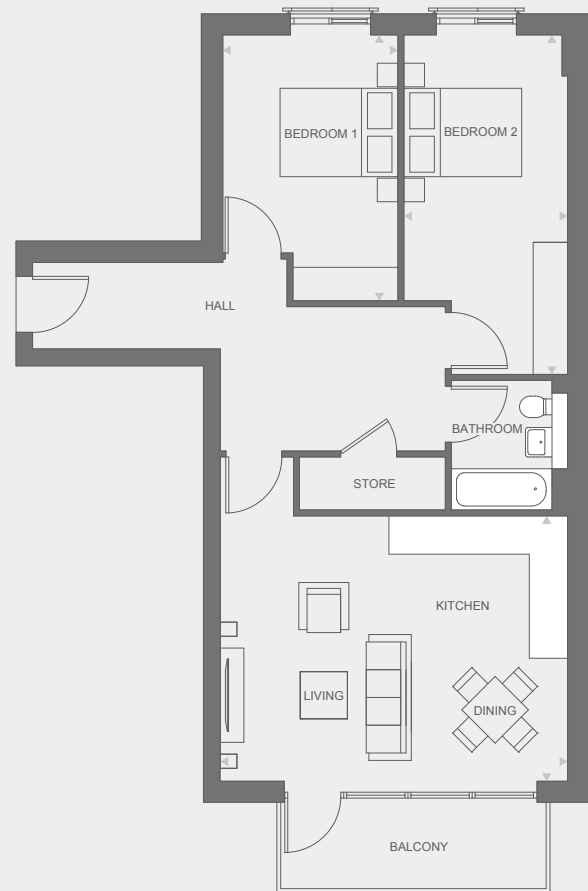
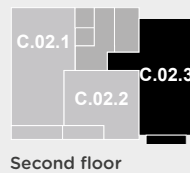


Plot 1.07

2 bedroom apartment 41 Axell House

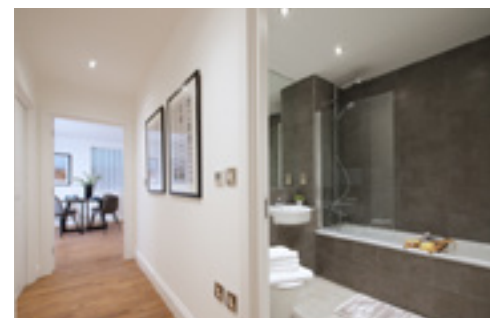
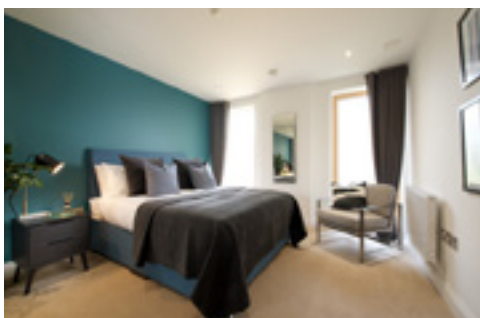
Type B

Bedroom 1	5.8m x 2.8m
Bedroom 2	4.5m x 3.0m
Living Room	4.5m x 2.8m
Dining Room	3.0m x 2.0m
Kitchen	3.0m x 2.4m
Bathroom	2.2m x 2.0m
Total	79.2m ²



Specification includes

- Gloss white kitchen units and stone colour Marengo kitchen worktop, with chrome door handles
- Stainless steel splashback
- Zanussi integrated oven, hood and hob
- Zanussi integrated dishwasher and fridge-freezer
- Zanussi integrated washer/dryer
- Contemporary white bathroom suites
- Anthracite porcelain wall and floor tiles in bathrooms
- Heated chrome towel rail and vanity mirror above the sink
- Smooth oak wood flooring in living/dining room and hallway



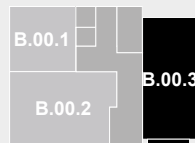
Any floor plans are a general outline of the layout of the property for guidance only. All measurements are approximate and may vary and any intending purchasers should not rely on them as statements of fact or representations of fact but must satisfy themselves by inspection or otherwise as to their accuracy. Dimensions shown are not intended to be relied upon for installation of appliances or items of furniture or otherwise. CGI's and images are for illustrative purposes only. Specifications are subject to change. Images are indicative only and may be of previous developments.

Plot G.01

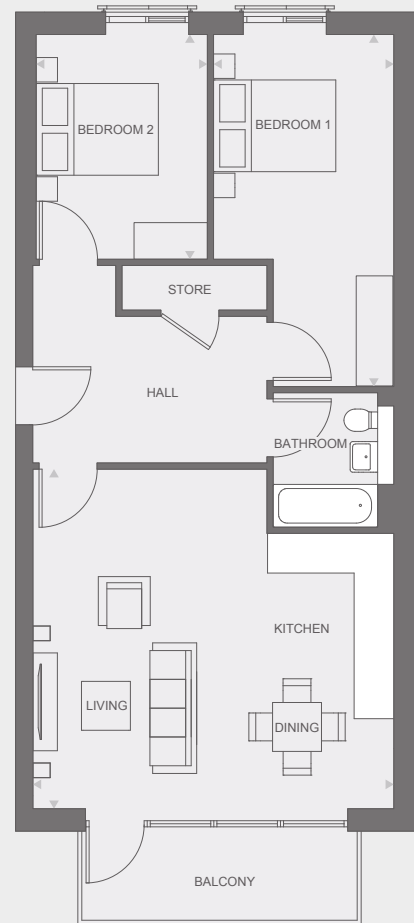
2 bedroom apartment 45 Golding Lodge

Type F

Bedroom 1	5.8m x 3.0m
Bedroom 2	3.7m x 2.9m
Living Room	3.8m x 3.3m
Dining Room	3.8m x 2.2m
Kitchen	4.5m x 2.1m
Bathroom	2.2m x 2.0m
Total	75.9m ²



Ground floor



Specification includes

- Gloss white kitchen units and stone colour Marengo kitchen worktop, with chrome door handles
- Stainless steel splashback
- Zanussi integrated oven, hood and hob
- Zanussi integrated dishwasher and fridge-freezer
- Zanussi integrated washer/dryer
- Contemporary white bathroom suites
- Anthracite porcelain wall and floor tiles in bathrooms
- Heated chrome towel rail and vanity mirror above the sink
- Smooth oak wood flooring in living/dining room and hallway



Any floor plans are a general outline of the layout of the property for guidance only. All measurements are approximate and may vary and any intending purchasers should not rely on them as statements of fact or representations of fact but must satisfy themselves by inspection or otherwise as to their accuracy. Dimensions shown are not intended to be relied upon for installation of appliances or items of furniture or otherwise. CGI's and images are for illustrative purposes only. Specifications are subject to change. Images are indicative only and may be of previous developments.