



Persona Homes

by Home Group

UNION PARK

HILLINGDON

1 and 2 bedroom apartments

*One and two-bedroom apartments available through shared ownership in Hillingdon, Uxbridge.
These homes are perfectly placed near the Grand Union Canal with a wide range of
amenities nearby and allocated parking included.*

Placed a stone's throw away from tow paths and within a semi-rural ribbon of green belt, Union Park offers modern apartments ideal for young professionals and couples looking to take their first step on the property ladder.

With a variety of layouts to choose from, there is something for every taste.



Contact us:

T: 0800 030 8888

E: contactus@yourpersonahome.com

W: yourpersonahome.com

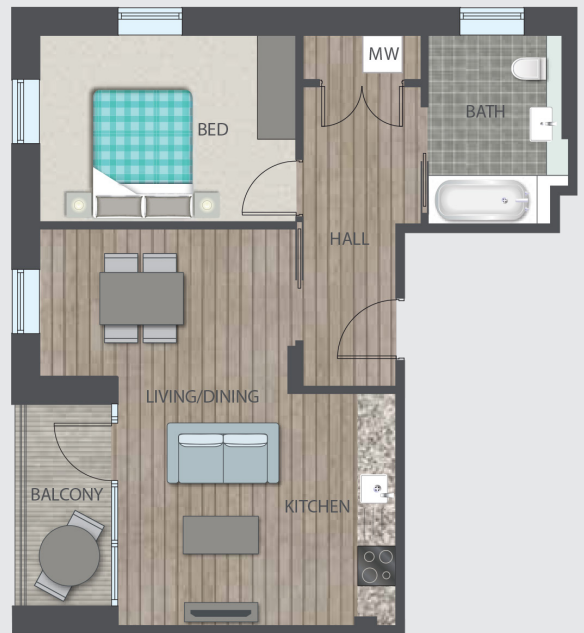
Union Park, Packet Boat Lane, Uxbridge, UB8 2GH



Type A
Flat 45, Rennie Court
Plot C333
1 bedroom apartment

Third floor

Kitchen/Living/Dining	6.4m x 4.2m
Master bedroom	4m x 3m
Total Area	54.4 m²



Type C
Flat 9, Henshall Court
Plot D31
2 bedroom apartment

Third floor

Kitchen/Living/Dining	7.2m x 4.4m
Master bedroom	4m x 3.8m
Bedroom 2	3.8m x 3.4m
Total Area	76.1 m²



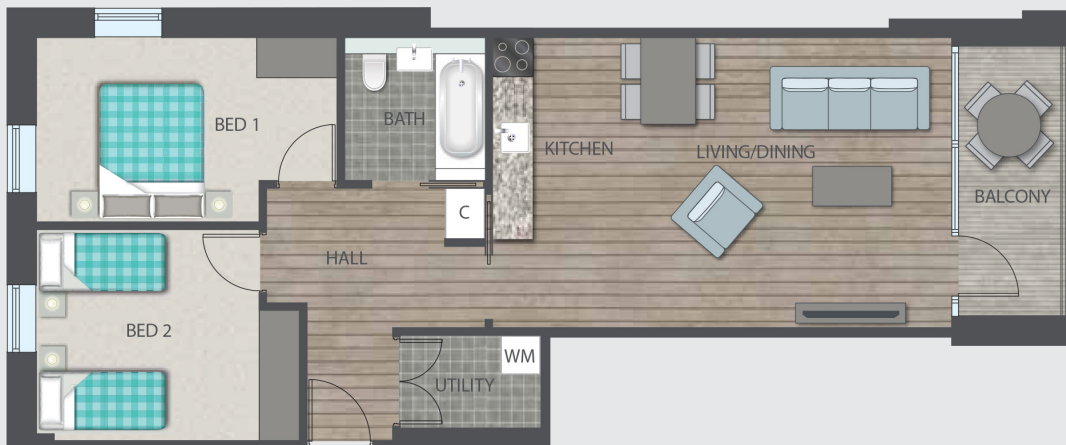
Any floor plans are a general outline of the layout of the property for guidance only. All measurements are approximate and may vary and any intending purchasers should not rely on them as statements of fact or representations of fact but must satisfy themselves by inspection or otherwise as to their accuracy. Dimensions shown are not intended to be relied upon for installation of appliances or items of furniture or otherwise. CGI's and images are for illustrative purposes only. Specifications are subject to change. Images are indicative only and may be of previous developments.

Type D Flat 11, Henshall Court Plot D33

2 bedroom apartment

Third floor

Kitchen/Living/Dining	6.8m x 4.2m
Master bedroom	4.4m x 2.8m
Bedroom 2	4m x 3m
Total Area	71.4 m²



Any floor plans are a general outline of the layout of the property for guidance only. All measurements are approximate and may vary and any intending purchasers should not rely on them as statements of fact or representations of fact but must satisfy themselves by inspection or otherwise as to their accuracy. Dimensions shown are not intended to be relied upon for installation of appliances or items of furniture or otherwise. CGI's and images are for illustrative purposes only. Specifications are subject to change. Images are indicative only and may be of previous developments.

Type E
Flat 37, Rennie Court
Plot C313
2 bedroom apartment

First floor

Kitchen/Living/Dining	6.8m x 3.8m
Master bedroom	4.2m x 2.8m
Bedroom 2	3.4m x 2.2m
Total Area	65.6 m²



Specification includes

- Designer grey base and wall units to kitchens with soft close handleless drawers and doors.
- Quartz stone worktop.
- Stainless steel electric fan assisted single oven (selected units only), ceramic 4 zone electric hob with stainless steel hood and splashback.
- Integrated appliances.
- Contemporary white bathroom suites.
- Large format grey porcelain floor tiling and limestone porcelain wall tiling.
- Heated chrome ladder towel rail.
- White porcelain basin with undermounted grey timber veneer vanity cabinet.
- Engineered smooth oak flooring in living/dining room and hallway.
- Fully fitted carpeting to bedrooms.
- Fitted wardrobes to bedrooms.
- Full height glazing to terrace and balcony.
- Allocated underground parking space with each home



Any floor plans are a general outline of the layout of the property for guidance only. All measurements are approximate and may vary and any intending purchasers should not rely on them as statements of fact or representations of fact but must satisfy themselves by inspection or otherwise as to their accuracy. Dimensions shown are not intended to be relied upon for installation of appliances or items of furniture or otherwise. CGI's and images are for illustrative purposes only. Specifications are subject to change. Images are indicative only and may be of previous developments.