

NEXUS

Enfield

SANDERLING
HOUSE

FLOOR PLANS
PHASE TWO





SITE PLAN

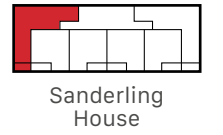


THE FLOOR PLANS

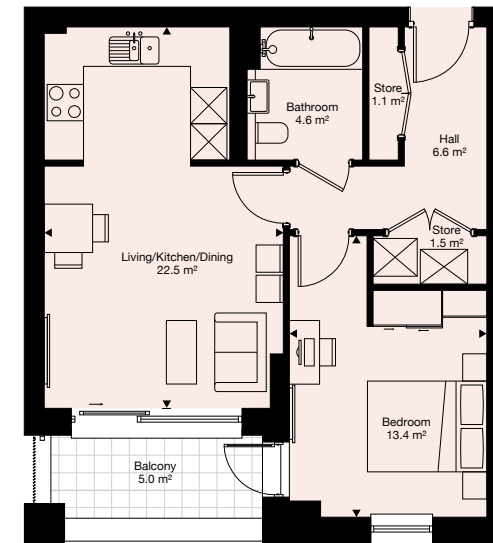
Plans not to scale



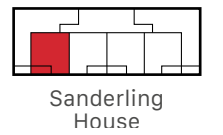
PLOT
 29 - First Floor
 35 - Second Floor
 41 - Third Floor
 47 - Fourth Floor
 53 - Fifth Floor
 2 Bedroom - 75.70 sq m



Plans not to scale

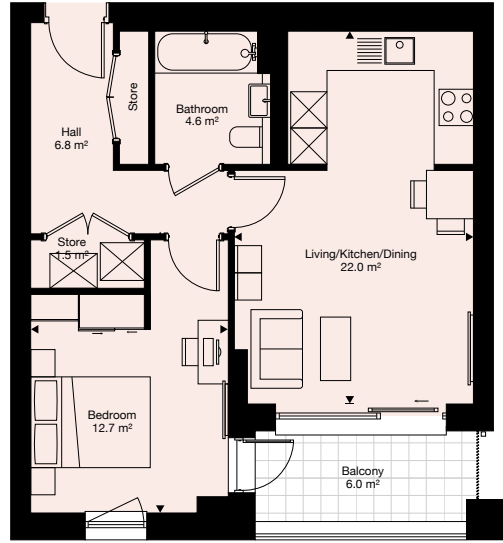


PLOT
 30 - First Floor
 36 - Second Floor
 42 - Third Floor
 48 - Fourth Floor
 54 - Fifth Floor
 1 Bedroom - 51.60 sq m



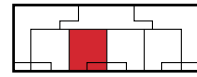
Important notice: this brochure and the description and measurements herein do not form part of any contract and whilst every effort has been made to ensure accuracy, this cannot be guaranteed. Prospective purchasers should not rely on this information but must get their solicitor to check the plans and specification attached to their contract. These particulars are believed to be correct at time of publishing but this cannot be guaranteed. Plans not to scale. (June 2021)

Plans not to scale



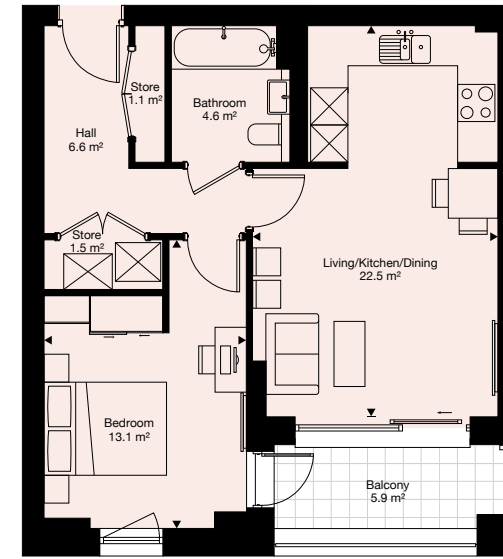
PLOT

- 31 - First Floor
- 37 - Second Floor
- 43 - Third Floor
- 49 - Fourth Floor
- 55 - Fifth Floor
- 1 Bedroom - 50.90 sq m



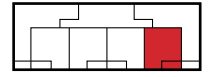
Sanderling House

Plans not to scale



PLOT

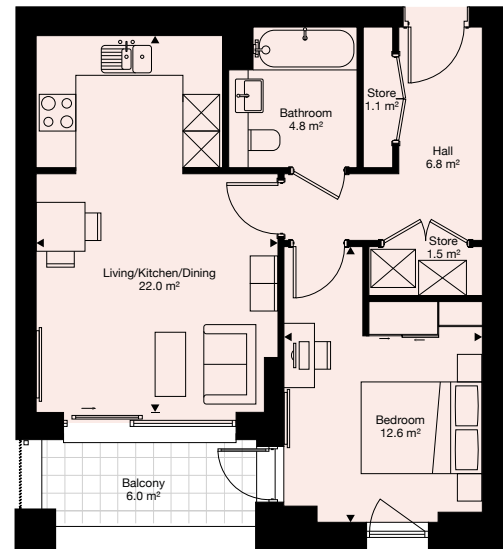
- 33 - First Floor
- 39 - Second Floor
- 45 - Third Floor
- 51 - Fourth Floor
- 57 - Fifth Floor
- 1 Bedroom - 51.90 sq m



Sanderling House

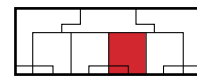


Plans not to scale



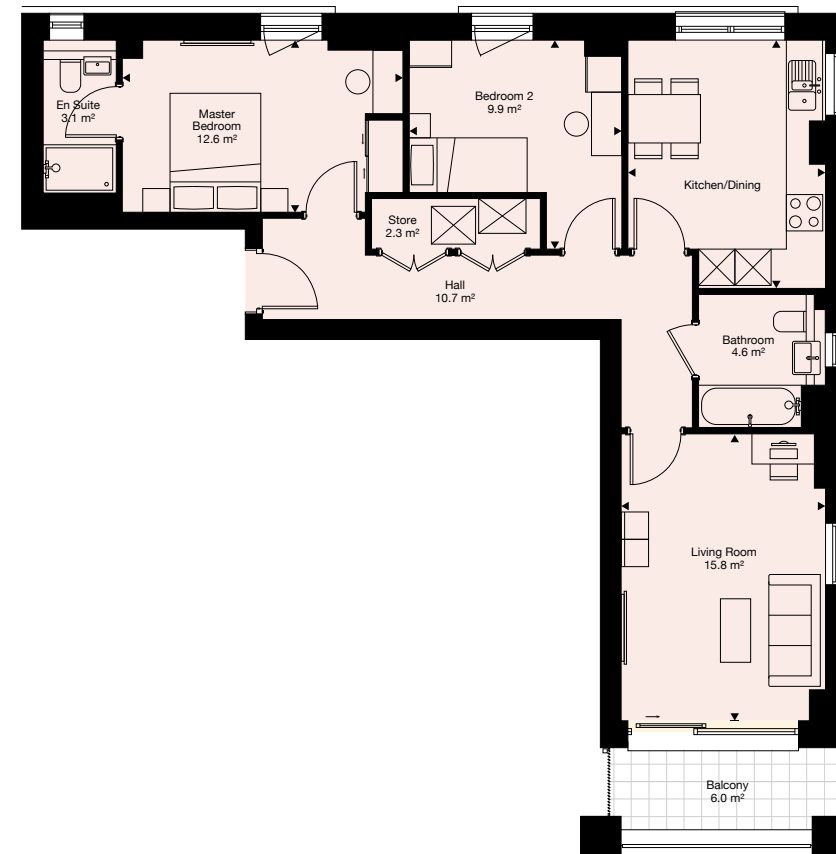
PLOT

- 32 - First Floor
- 38 - Second Floor
- 44 - Third Floor
- 50 - Fourth Floor
- 56 - Fifth Floor
- 1 Bedroom - 51.20 sq m



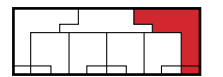
Sanderling House

Plans not to scale



PLOT

- 34 - First Floor
- 40 - Second Floor
- 46 - Third Floor
- 52 - Fourth Floor
- 58 - Fifth Floor
- 2 Bedroom - 75.40 sq m



Sanderling House





Register your interest:

[NEXUS-ENFIELD.CO.UK](https://www.newlonliving.co.uk) | 0800 058 2544

IMPORTANT NOTICE: This brochure and the description and measurements herein do not form part of any contract and whilst every effort has been made to ensure accuracy, this cannot be guaranteed. Prospective purchasers should not rely on this information but must get their solicitor to check the plans and specification attached to their contract. These particulars are believed to be correct at time of publishing but this cannot be guaranteed. (June 2021).

Designed and produced by Oracle Creative • www.oraclecreative.co.uk



SUPPORTED BY
MAYOR OF LONDON

