



Making home ownership possible

# Floor Plans

by Metropolitan Thames Valley

SO Resi  
Farnham





Sat Nav Location  
GU9 7UA

# Development overview

Each brand new shared ownership home is designed to maximize space and is finished to the high specification associated with SO Resi apartments; some have Juliette balconies and all have allocated parking spaces.

Each one and two bedroom apartment shares communal areas, gardens and green areas in this thoughtfully designed, lively bustling new destination of choice.

### Key

- SO Resi Shared Ownership
- SO Resi & Private Sale
- Private Sale
- Site Parking (extends underground)
- Cycle Store
- Bin Store (ground/basement levels)
- Stairwell

The site layout is intended for illustrative purposes only and is subject to change.

# Block D1



First Floor

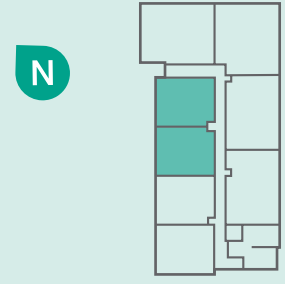
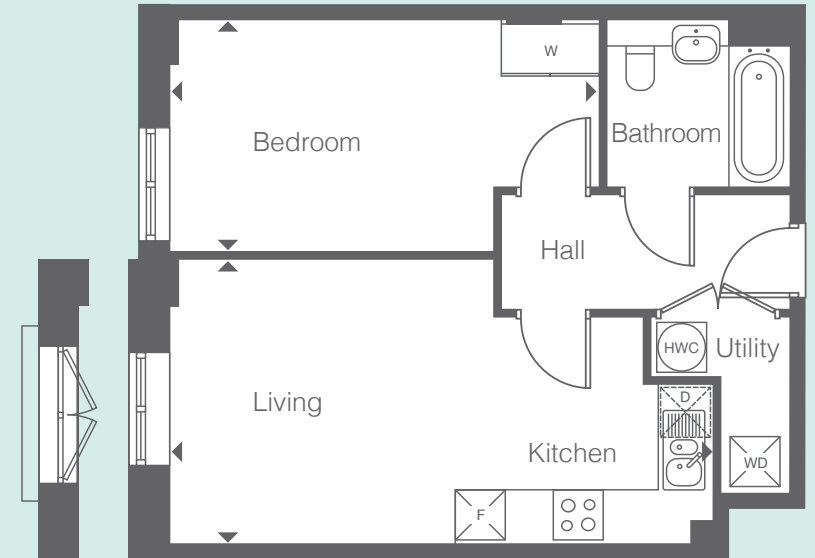
Second Floor

KEY

- SO Resi Shared Ownership
- Private Sale
- Residents' Lift

## D1 Type 1

1 bedroom apartment



| Floor  | Plots                |
|--------|----------------------|
| Ground | -                    |
| First  | 5, 6*                |
| Second | 13, 14* <sup>◇</sup> |

\* Handed Plots  
<sup>◇</sup> Juliette Balcony

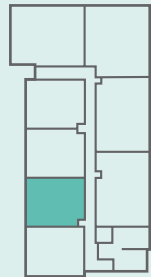
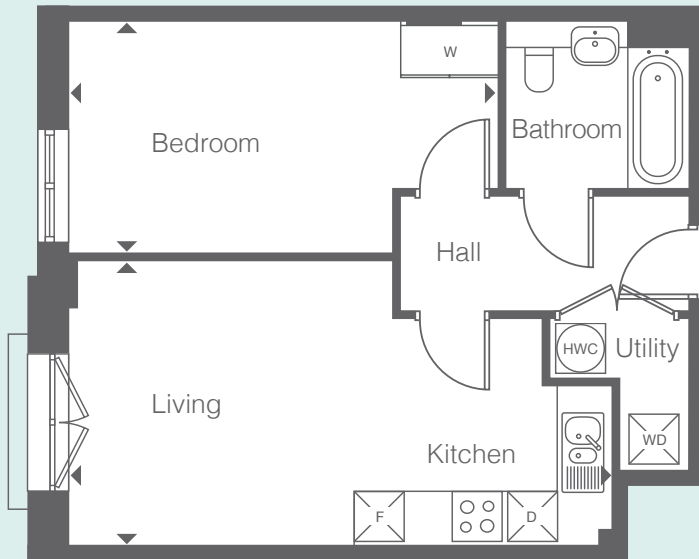
| Room                  | Metric     | Imperial      |
|-----------------------|------------|---------------|
| Living / Kitchen Area | 6.5 x 3.4m | 21'3" x 11'2" |
| Bedroom               | 5.2 x 2.8m | 17'1" x 9'2"  |

- F Fridge/Freezer
- D Dishwasher
- WD Washer/Dryer
- W Wardrobe
- HWC Hot Water Cylinder

All floor plans in this brochure are for general guidance only. All room dimensions are subject to a plus/minus 5% tolerance. Measurements are taken from plans representing the largest cross section of each room - actual build may vary. Any dimensions shown are not intended to be used for carpet sizes, appliances, spaces or items of furniture. These particulars do not constitute any part of an offer or contract with regard to the specifications.

**D1 Type 2**

1 bedroom apartment



| Floor  | Plots |
|--------|-------|
| Ground | -     |
| First  | 7     |
| Second | 15    |

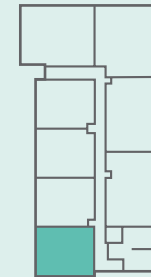
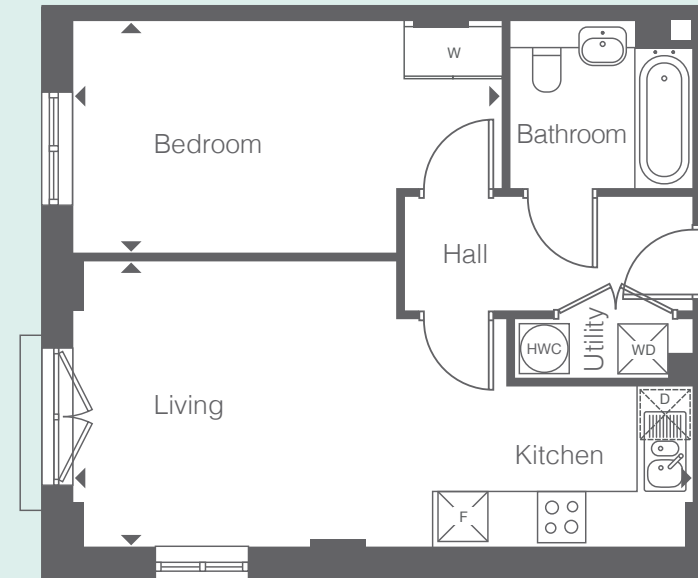
| Room                  | Metric     | Imperial      |
|-----------------------|------------|---------------|
| Living / Kitchen Area | 6.5 x 3.4m | 21'3" x 11'2" |
| Bedroom               | 5.2 x 2.8m | 17'1" x 9'2"  |

- Fridge/Freezer
- Dishwasher
- Washer/Dryer
- Wardrobe
- Hot Water Cylinder

All floor plans in this brochure are for general guidance only. All room dimensions are subject to a plus/minus 5% tolerance. Measurements are taken from plans representing the largest cross section of each room - actual build may vary. Any dimensions shown are not intended to be used for carpet sizes, appliances, spaces or items of furniture. These particulars do not constitute any part of an offer or contract with regard to the specifications.

**D1 Type 3**

1 bedroom apartment



| Floor  | Plot |
|--------|------|
| Ground | -    |
| First  | 8    |
| Second | -    |

| Room                  | Metric     | Imperial      |
|-----------------------|------------|---------------|
| Living / Kitchen Area | 7.4 x 3.4m | 24'3" x 11'2" |
| Bedroom               | 5.2 x 2.8m | 17'1" x 9'2"  |

- Fridge/Freezer
- Dishwasher
- Washer/Dryer
- Wardrobe
- Hot Water Cylinder

All floor plans in this brochure are for general guidance only. All room dimensions are subject to a plus/minus 5% tolerance. Measurements are taken from plans representing the largest cross section of each room - actual build may vary. Any dimensions shown are not intended to be used for carpet sizes, appliances, spaces or items of furniture. These particulars do not constitute any part of an offer or contract with regard to the specifications.



Computer Generated Image: SO Resi Farnham Block D6

**Block D6**



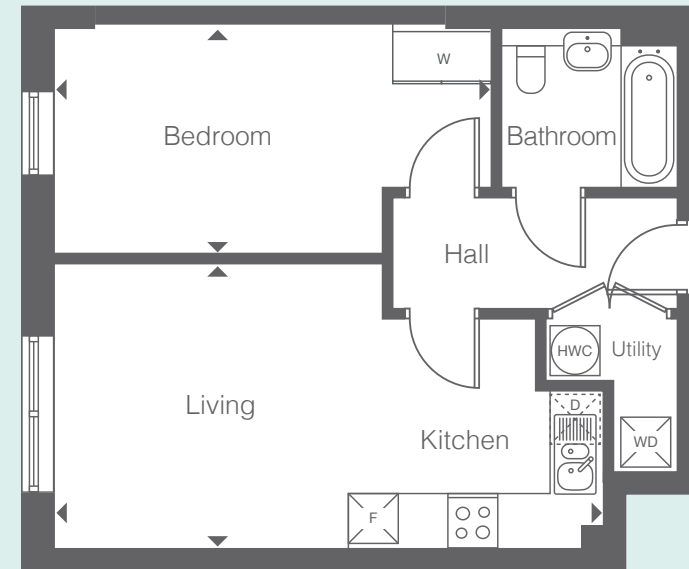
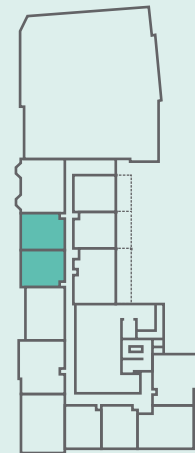
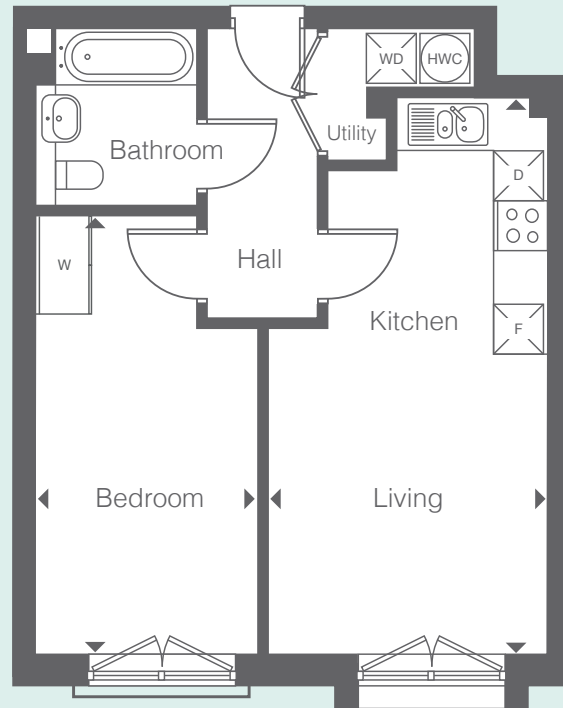
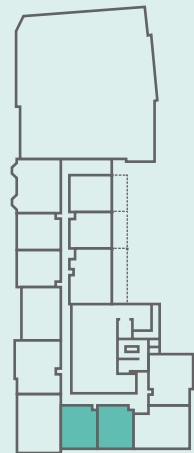
- KEY
- SO Resi Shared Ownership
  - Private Sale
  - Residents' Lift

**D6 Type 1**

1 bedroom apartment

**D6 Type 2**

1 bedroom apartment



| Floor  | Plots  |
|--------|--------|
| Ground | -      |
| First  | 50, 51 |
| Second | -      |
| Third  | -      |

| Room                  | Metric     | Imperial      |
|-----------------------|------------|---------------|
| Living / Kitchen Area | 6.7 x 3.4m | 22'0" x 11'2" |
| Bedroom               | 5.3 x 2.8m | 17'4" x 9'2"  |

- Fridge/Freezer
- Dishwasher
- Washer/Dryer
- Wardrobe
- Hot Water Cylinder

| Floor  | Plots   |
|--------|---------|
| Ground | -       |
| First  | 55, 56* |
| Second | 68, 69* |
| Third  | -       |

\* Handed Plots

| Room                  | Metric     | Imperial      |
|-----------------------|------------|---------------|
| Living / Kitchen Area | 6.6 x 3.4m | 21'7" x 11'2" |
| Bedroom               | 5.3 x 2.8m | 17'4" x 9'2"  |

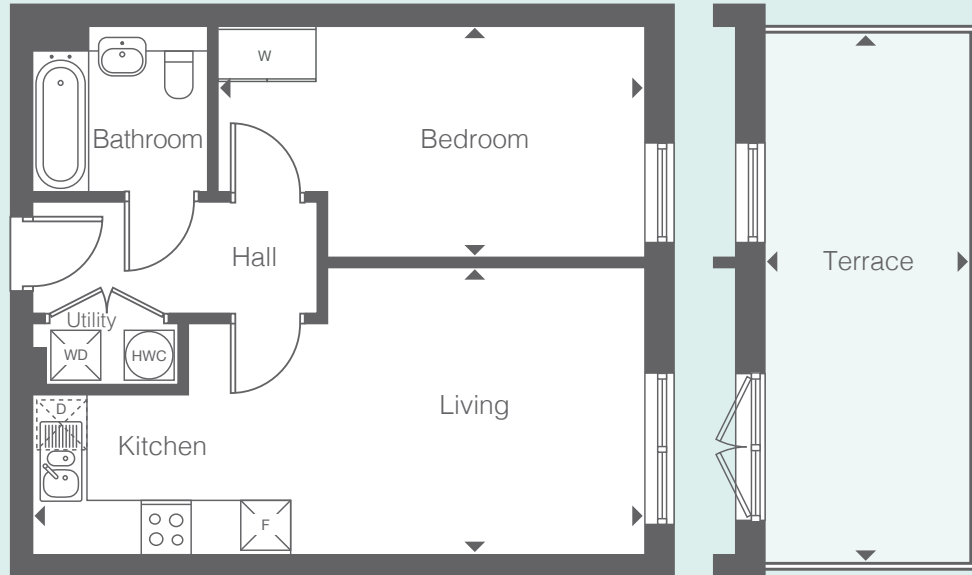
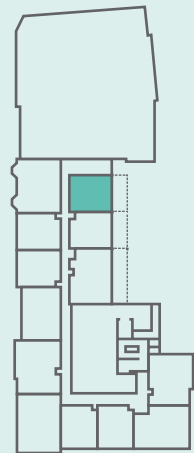
- Fridge/Freezer
- Dishwasher
- Washer/Dryer
- Wardrobe
- Hot Water Cylinder

All floor plans in this brochure are for general guidance only. All room dimensions are subject to a plus/minus 5% tolerance. Measurements are taken from plans representing the largest cross section of each room - actual build may vary. Any dimensions shown are not intended to be used for carpet sizes, appliances, spaces or items of furniture. These particulars do not constitute any part of an offer or contract with regard to the specifications.

All floor plans in this brochure are for general guidance only. All room dimensions are subject to a plus/minus 5% tolerance. Measurements are taken from plans representing the largest cross section of each room - actual build may vary. Any dimensions shown are not intended to be used for carpet sizes, appliances, spaces or items of furniture. These particulars do not constitute any part of an offer or contract with regard to the specifications.

**D6 Type 3**

1 bedroom apartment



| Floor  | Plots           |
|--------|-----------------|
| Ground | -               |
| First  | 58 <sup>◇</sup> |
| Second | 71              |
| Third  | -               |

◇ Terrace

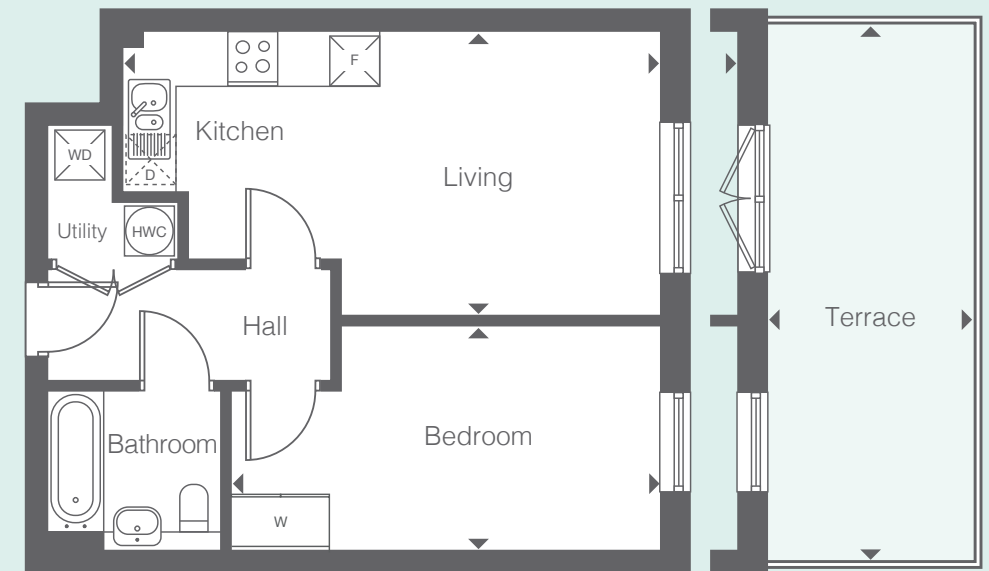
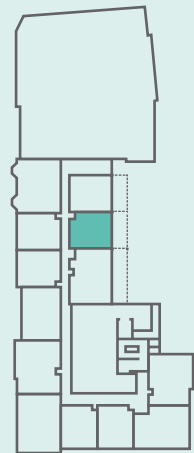
| Room                  | Metric     | Imperial      |
|-----------------------|------------|---------------|
| Living / Kitchen Area | 7.3 x 3.4m | 24'0" x 11'2" |
| Bedroom               | 5.1 x 2.8m | 16'7" x 9'2"  |
| Terrace               | 6.4 x 2.3m | 21'0" x 7'5"  |

- Fridge/Freezer
- Dishwasher
- Washer/Dryer
- Wardrobe
- Hot Water Cylinder

All floor plans in this brochure are for general guidance only. All room dimensions are subject to a plus/minus 5% tolerance. Measurements are taken from plans representing the largest cross section of each room - actual build may vary. Any dimensions shown are not intended to be used for carpet sizes, appliances, spaces or items of furniture. These particulars do not constitute any part of an offer or contract with regard to the specifications.

**D6 Type 4**

1 bedroom apartment



| Floor  | Plots           |
|--------|-----------------|
| Ground | -               |
| First  | 59 <sup>◇</sup> |
| Second | 72              |
| Third  | -               |

◇ Terrace

| Room                  | Metric     | Imperial      |
|-----------------------|------------|---------------|
| Living / Kitchen Area | 6.5 x 3.5m | 21'3" x 11'5" |
| Bedroom               | 5.1 x 2.8m | 16'7" x 9'2"  |
| Terrace               | 6.5 x 2.3m | 21'3" x 7'5"  |

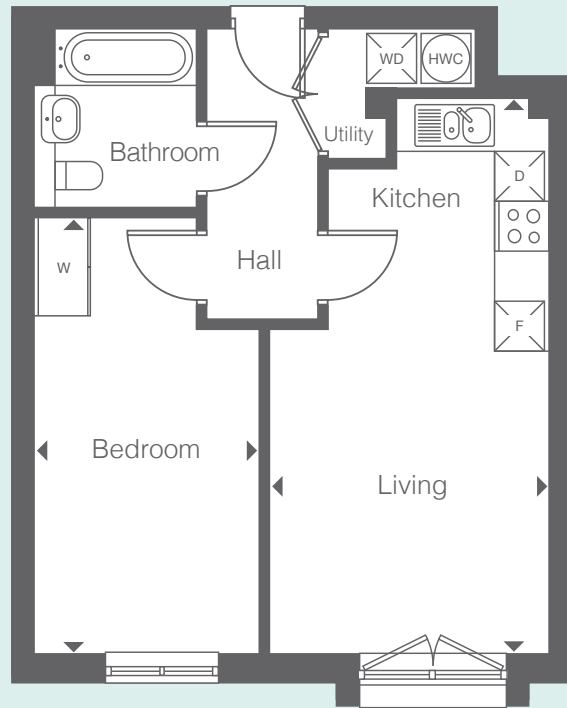
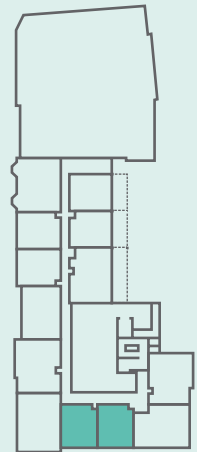
- Fridge/Freezer
- Dishwasher
- Washer/Dryer
- Wardrobe
- Hot Water Cylinder

All floor plans in this brochure are for general guidance only. All room dimensions are subject to a plus/minus 5% tolerance. Measurements are taken from plans representing the largest cross section of each room - actual build may vary. Any dimensions shown are not intended to be used for carpet sizes, appliances, spaces or items of furniture. These particulars do not constitute any part of an offer or contract with regard to the specifications.



**D6 Type 5**

1 bedroom apartment



| Floor  | Plots  |
|--------|--------|
| Ground | -      |
| First  | -      |
| Second | 63, 64 |
| Third  | -      |

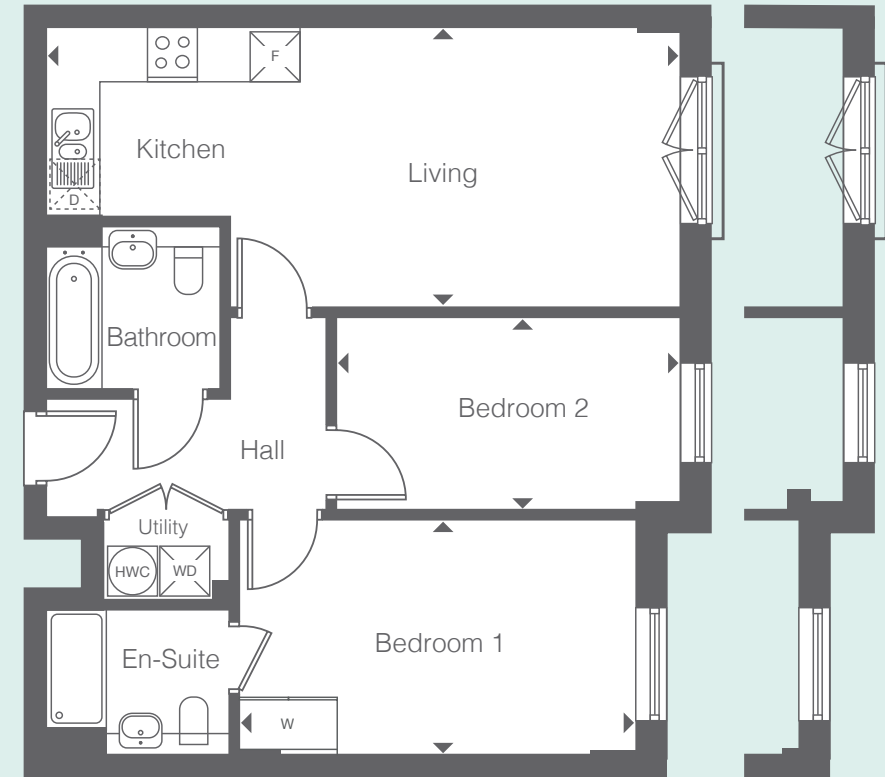
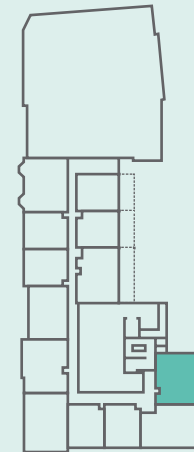
| Room                  | Metric     | Imperial      |
|-----------------------|------------|---------------|
| Living / Kitchen Area | 6.7 x 3.4m | 22'0" x 11'2" |
| Bedroom               | 5.2 x 2.8m | 17'1" x 9'2"  |

- Fridge/Freezer
- Dishwasher
- Washer/Dryer
- Wardrobe
- Hot Water Cylinder

All floor plans in this brochure are for general guidance only. All room dimensions are subject to a plus/minus 5% tolerance. Measurements are taken from plans representing the largest cross section of each room - actual build may vary. Any dimensions shown are not intended to be used for carpet sizes, appliances, spaces or items of furniture. These particulars do not constitute any part of an offer or contract with regard to the specifications.

**D6 Type 6**

2 bedroom apartment



| Floor  | Plots           |
|--------|-----------------|
| Ground | -               |
| First  | 48              |
| Second | 61 <sup>§</sup> |
| Third  | -               |

<sup>§</sup> Wall Layout Variation

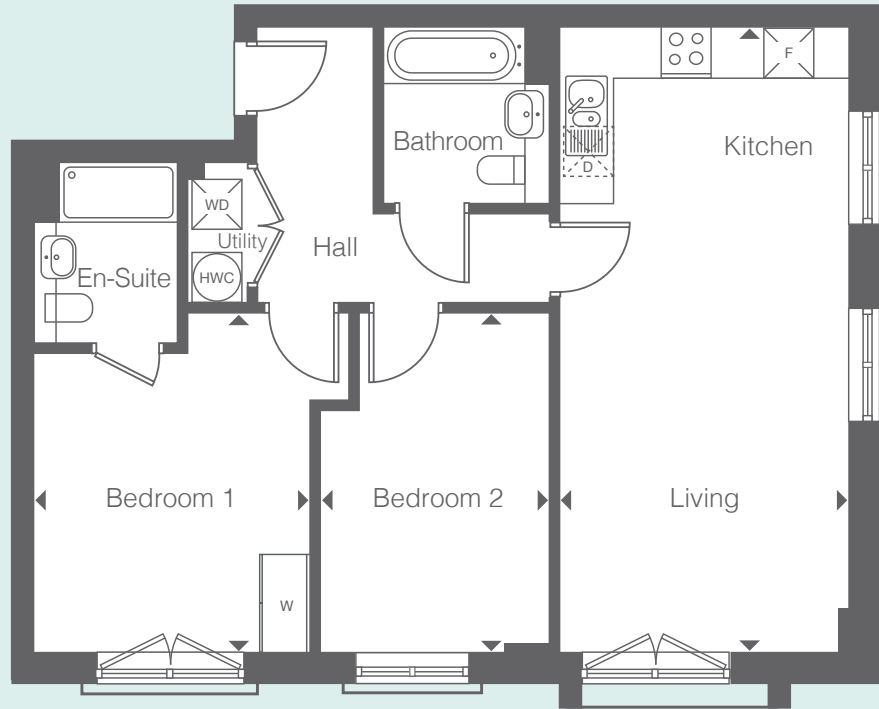
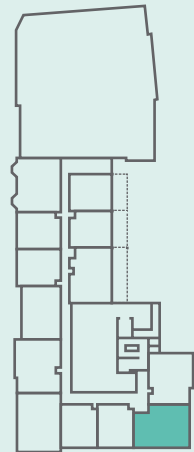
| Room                  | Metric     | Imperial      |
|-----------------------|------------|---------------|
| Living / Kitchen Area | 7.7 x 3.4m | 25'3" x 11'2" |
| Bedroom 1             | 4.8 x 2.8m | 15'7" x 9'2"  |
| Bedroom 2             | 4.2 x 2.4m | 13'8" x 7'9"  |

- Fridge/Freezer
- Dishwasher
- Washer/Dryer
- Wardrobe
- Hot Water Cylinder

All floor plans in this brochure are for general guidance only. All room dimensions are subject to a plus/minus 5% tolerance. Measurements are taken from plans representing the largest cross section of each room - actual build may vary. Any dimensions shown are not intended to be used for carpet sizes, appliances, spaces or items of furniture. These particulars do not constitute any part of an offer or contract with regard to the specifications.

**D6 Type 7**

2 bedroom apartment



| Floor  | Plots |
|--------|-------|
| Ground | -     |
| First  | 49    |
| Second | -     |
| Third  | -     |

| Room                  | Metric     | Imperial      |
|-----------------------|------------|---------------|
| Living / Kitchen Area | 7.5 x 3.5m | 24'6" x 11'5" |
| Bedroom 1             | 4.1 x 3.4m | 13'5" x 11'2" |
| Bedroom 2             | 4.1 x 2.8m | 13'5" x 9'2"  |

- Fridge/Freezer
- Dishwasher
- Washer/Dryer
- Wardrobe
- Hot Water Cylinder

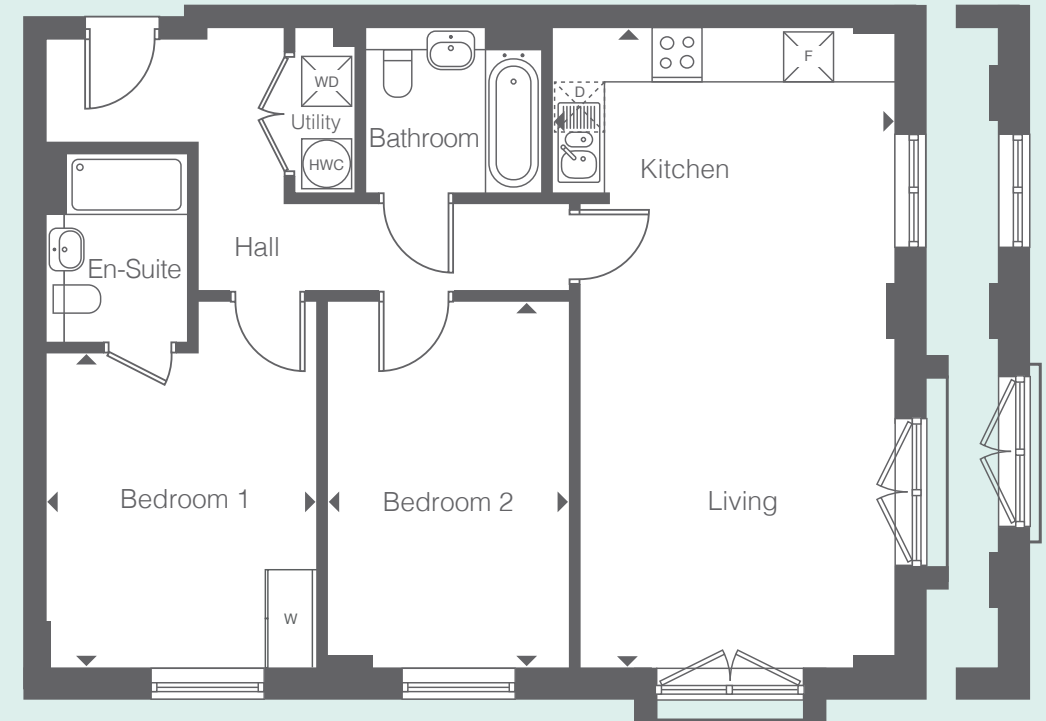
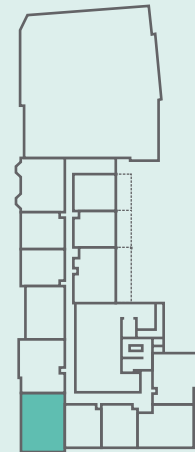
All floor plans in this brochure are for general guidance only. All room dimensions are subject to a plus/minus 5% tolerance. Measurements are taken from plans representing the largest cross section of each room - actual build may vary. Any dimensions shown are not intended to be used for carpet sizes, appliances, spaces or items of furniture. These particulars do not constitute any part of an offer or contract with regard to the specifications.

**D6 Type 8**

2 bedroom apartment



Plan View Rotated



| Floor  | Plots           |
|--------|-----------------|
| Ground | -               |
| First  | 52              |
| Second | 65 <sup>§</sup> |
| Third  | -               |

<sup>§</sup> Layout Variation

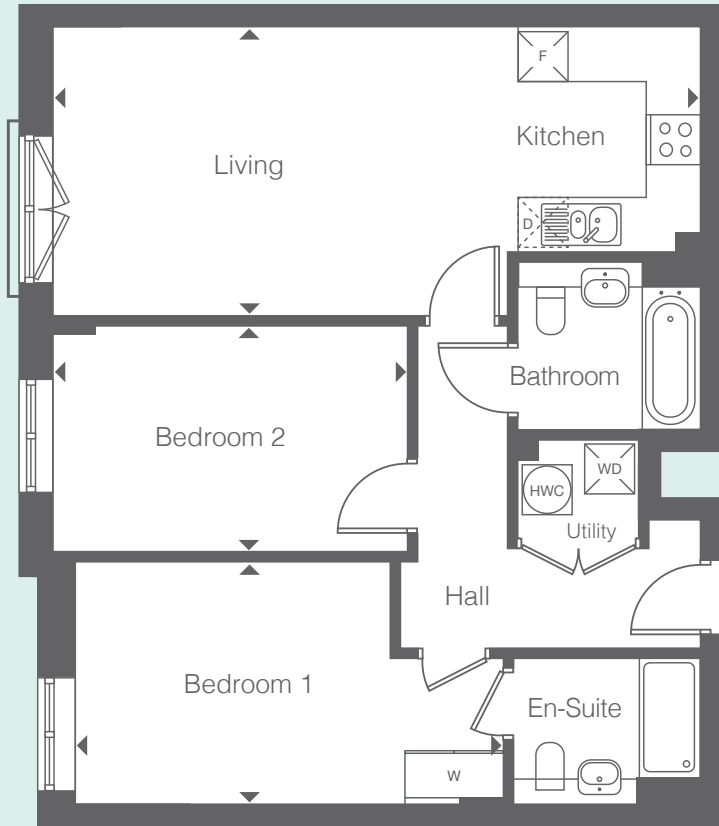
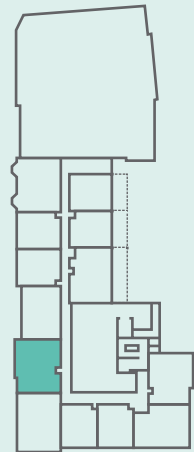
| Room                  | Metric     | Imperial      |
|-----------------------|------------|---------------|
| Living / Kitchen Area | 7.7 x 4.1m | 25'3" x 13'5" |
| Bedroom 1             | 3.8 x 3.4m | 12'5" x 11'2" |
| Bedroom 2             | 4.4 x 2.9m | 14'4" x 9'5"  |

- Fridge/Freezer
- Dishwasher
- Washer/Dryer
- Wardrobe
- Hot Water Cylinder

All floor plans in this brochure are for general guidance only. All room dimensions are subject to a plus/minus 5% tolerance. Measurements are taken from plans representing the largest cross section of each room - actual build may vary. Any dimensions shown are not intended to be used for carpet sizes, appliances, spaces or items of furniture. These particulars do not constitute any part of an offer or contract with regard to the specifications.

**D6 Type 9**

2 bedroom apartment



| Floor  | Plots |
|--------|-------|
| Ground | -     |
| First  | 53    |
| Second | 66    |
| Third  | -     |

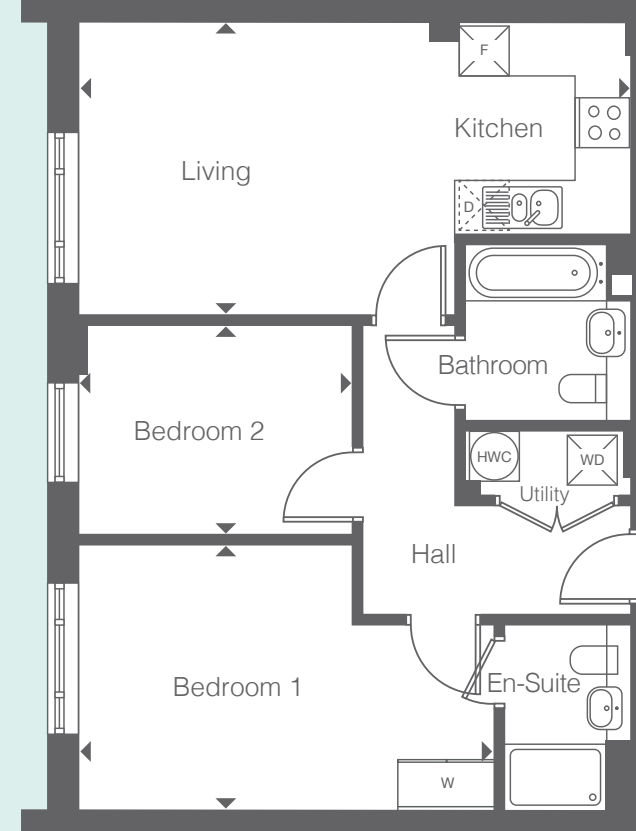
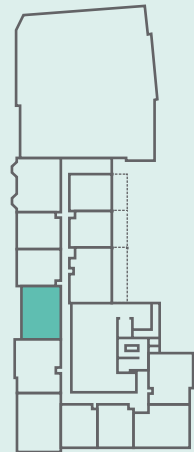
| Room                  | Metric     | Imperial      |
|-----------------------|------------|---------------|
| Living / Kitchen Area | 7.7 x 3.5m | 25'3" x 11'5" |
| Bedroom 1             | 5.2 x 2.9m | 17'1" x 9'5"  |
| Bedroom 2             | 4.3 x 2.8m | 14'1" x 9'2"  |

- Fridge/Freezer
- Dishwasher
- Washer/Dryer
- Wardrobe
- Hot Water Cylinder

All floor plans in this brochure are for general guidance only. All room dimensions are subject to a plus/minus 5% tolerance. Measurements are taken from plans representing the largest cross section of each room - actual build may vary. Any dimensions shown are not intended to be used for carpet sizes, appliances, spaces or items of furniture. These particulars do not constitute any part of an offer or contract with regard to the specifications.

**D6 Type 10**

2 bedroom apartment



| Floor  | Plots |
|--------|-------|
| Ground | -     |
| First  | 54    |
| Second | -     |
| Third  | -     |

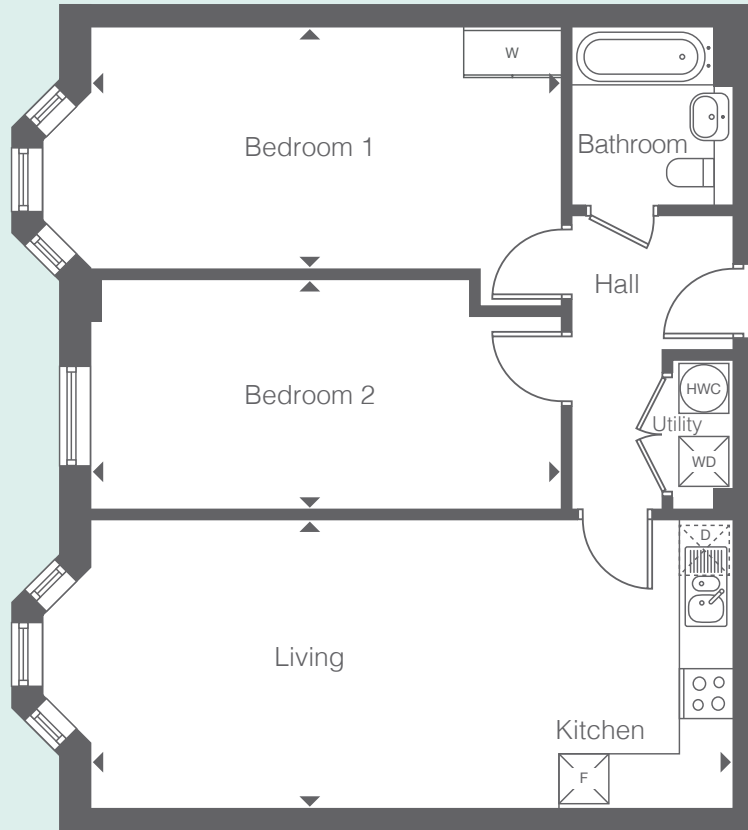
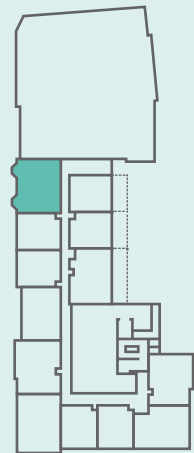
| Room                  | Metric     | Imperial      |
|-----------------------|------------|---------------|
| Living / Kitchen Area | 6.6 x 3.6m | 21'7" x 11'8" |
| Bedroom 1             | 5.0 x 3.2m | 16'4" x 10'5" |
| Bedroom 2             | 3.3 x 2.6m | 10'8" x 8'5"  |

- Fridge/Freezer
- Dishwasher
- Washer/Dryer
- Wardrobe
- Hot Water Cylinder

All floor plans in this brochure are for general guidance only. All room dimensions are subject to a plus/minus 5% tolerance. Measurements are taken from plans representing the largest cross section of each room - actual build may vary. Any dimensions shown are not intended to be used for carpet sizes, appliances, spaces or items of furniture. These particulars do not constitute any part of an offer or contract with regard to the specifications.

**D6 Type 11**

2 bedroom apartment



| Floor  | Plots |
|--------|-------|
| Ground | -     |
| First  | 57    |
| Second | 70    |
| Third  | -     |

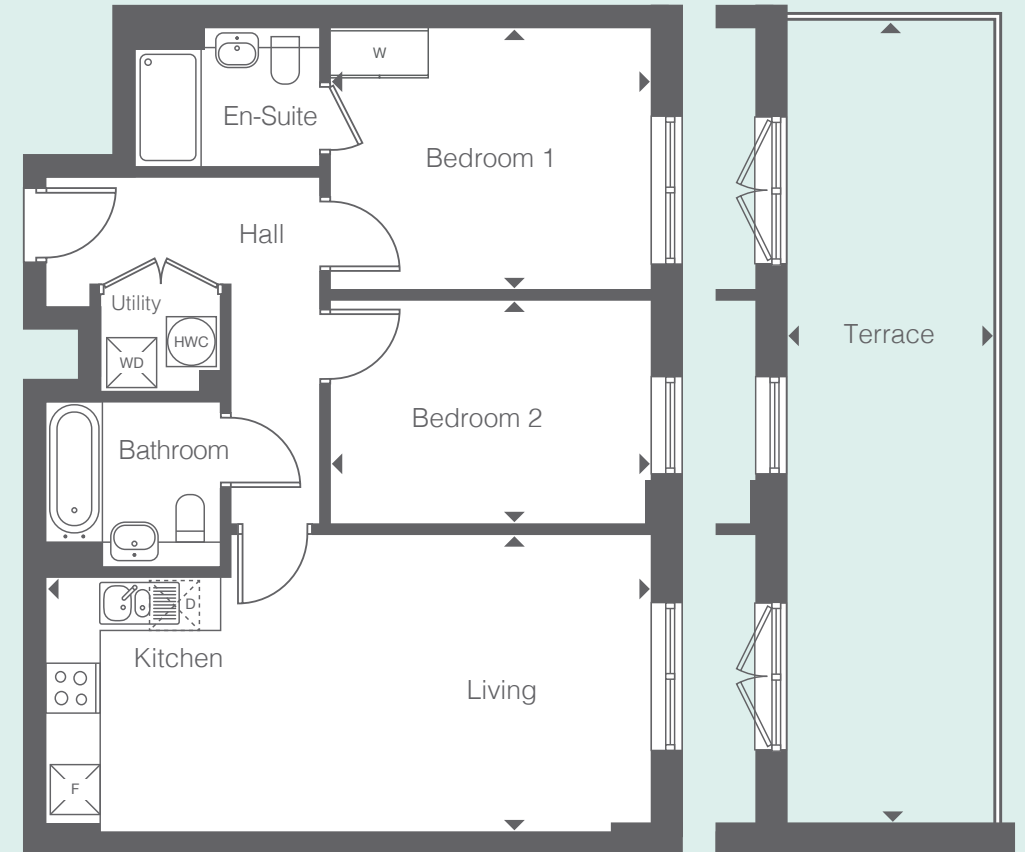
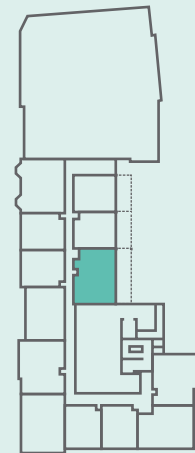
| Room                  | Metric     | Imperial      |
|-----------------------|------------|---------------|
| Living / Kitchen Area | 7.7 x 3.5m | 25'3" x 11'5" |
| Bedroom 1             | 5.6 x 3.0m | 18'4" x 9'8"  |
| Bedroom 2             | 5.6 x 2.8m | 18'4" x 9'2"  |

- Fridge/Freezer
- Dishwasher
- Washer/Dryer
- Wardrobe
- Hot Water Cylinder

All floor plans in this brochure are for general guidance only. All room dimensions are subject to a plus/minus 5% tolerance. Measurements are taken from plans representing the largest cross section of each room - actual build may vary. Any dimensions shown are not intended to be used for carpet sizes, appliances, spaces or items of furniture. These particulars do not constitute any part of an offer or contract with regard to the specifications.

**D6 Type 12**

2 bedroom apartment



| Floor  | Plots           |
|--------|-----------------|
| Ground | -               |
| First  | 60 <sup>♦</sup> |
| Second | 73              |
| Third  | -               |

♦ Terrace

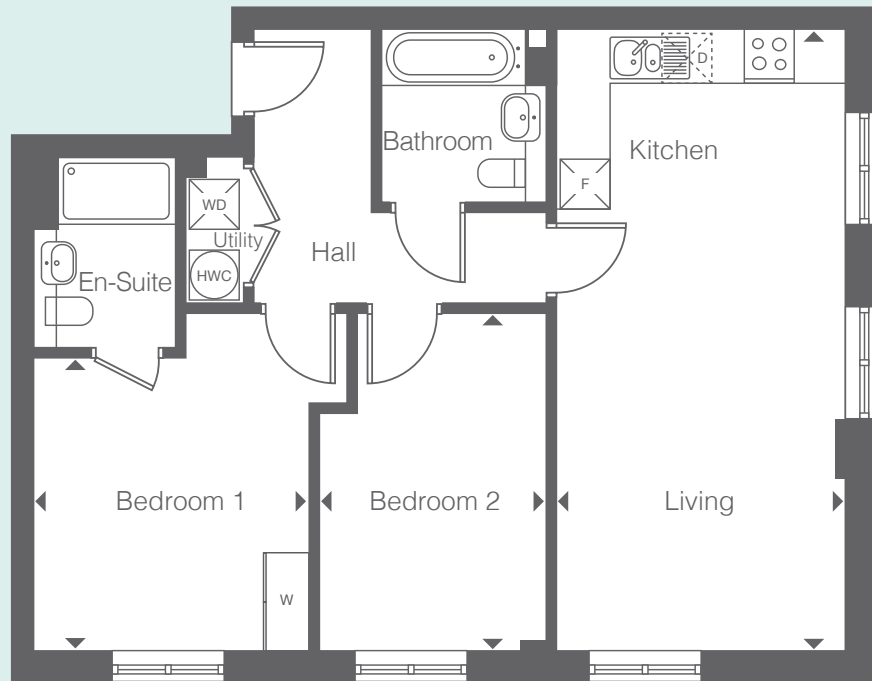
| Room                  | Metric     | Imperial      |
|-----------------------|------------|---------------|
| Living / Kitchen Area | 7.3 x 3.6m | 24'0" x 11'8" |
| Bedroom 1             | 3.9 x 3.2m | 12'8" x 10'5" |
| Bedroom 2             | 3.9 x 2.7m | 12'9" x 8'9"  |
| Terrace               | 9.7 x 2.3m | 31'8" x 7'5"  |

- Fridge/Freezer
- Dishwasher
- Washer/Dryer
- Wardrobe
- Hot Water Cylinder

All floor plans in this brochure are for general guidance only. All room dimensions are subject to a plus/minus 5% tolerance. Measurements are taken from plans representing the largest cross section of each room - actual build may vary. Any dimensions shown are not intended to be used for carpet sizes, appliances, spaces or items of furniture. These particulars do not constitute any part of an offer or contract with regard to the specifications.

**D6 Type 13**

2 bedroom apartment



| Floor  | Plots |
|--------|-------|
| Ground | -     |
| First  | -     |
| Second | 62    |
| Third  | -     |

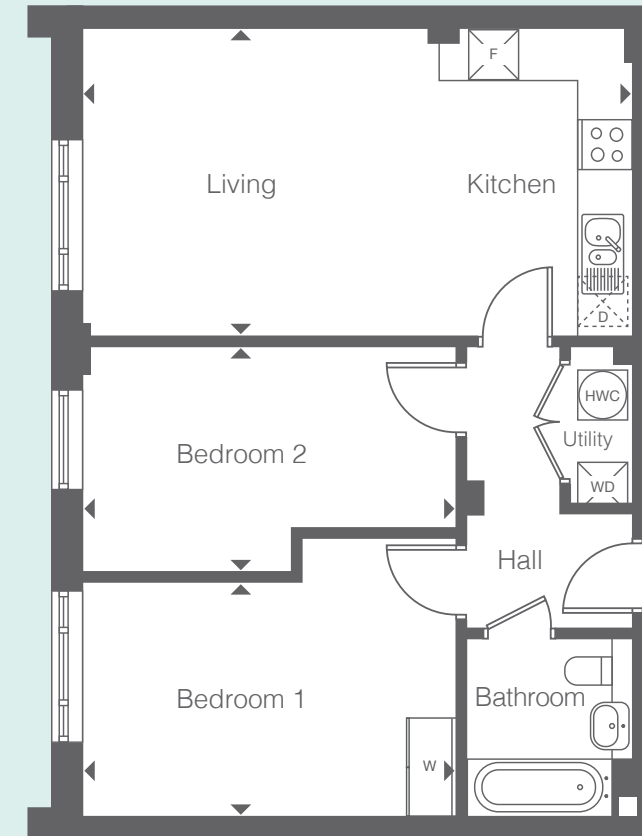
| Room                  | Metric     | Imperial      |
|-----------------------|------------|---------------|
| Living / Kitchen Area | 7.5 x 3.5m | 24'6" x 11'5" |
| Bedroom 1             | 3.5 x 3.4m | 11'5" x 11'2" |
| Bedroom 2             | 4.0 x 2.8m | 13'1" x 9'2"  |

- Fridge/Freezer
- Dishwasher
- Washer/Dryer
- Wardrobe
- Hot Water Cylinder

All floor plans in this brochure are for general guidance only. All room dimensions are subject to a plus/minus 5% tolerance. Measurements are taken from plans representing the largest cross section of each room - actual build may vary. Any dimensions shown are not intended to be used for carpet sizes, appliances, spaces or items of furniture. These particulars do not constitute any part of an offer or contract with regard to the specifications.

**D6 Type 14**

2 bedroom apartment



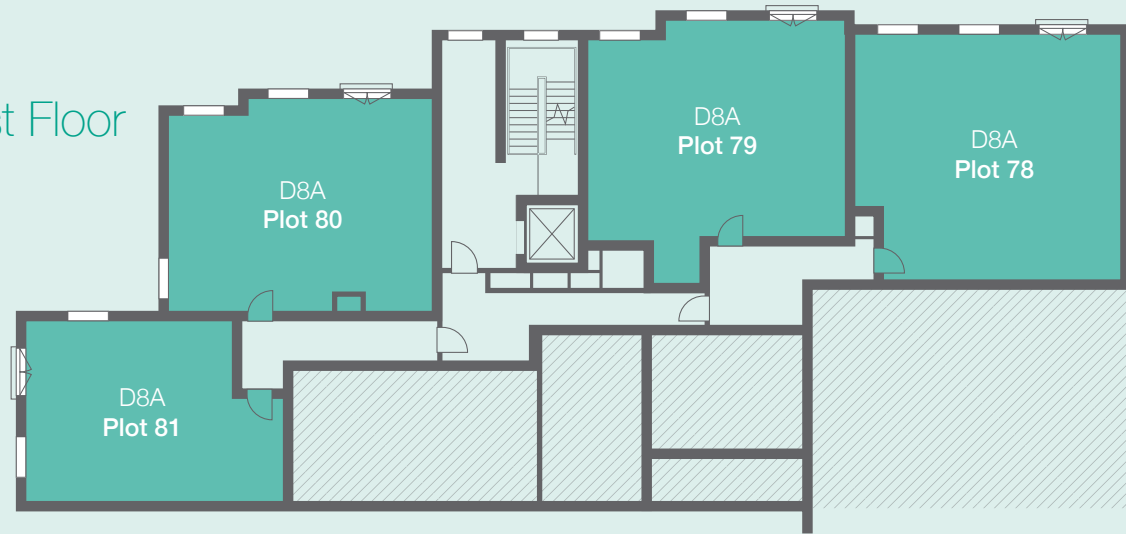
| Floor  | Plots |
|--------|-------|
| Ground | -     |
| First  | -     |
| Second | 67    |
| Third  | -     |

| Room                  | Metric     | Imperial      |
|-----------------------|------------|---------------|
| Living / Kitchen Area | 6.6 x 3.7m | 21'7" x 12'1" |
| Bedroom 1             | 4.5 x 2.9m | 14'8" x 9'5"  |
| Bedroom 2             | 4.5 x 2.8m | 14'8" x 9'2"  |

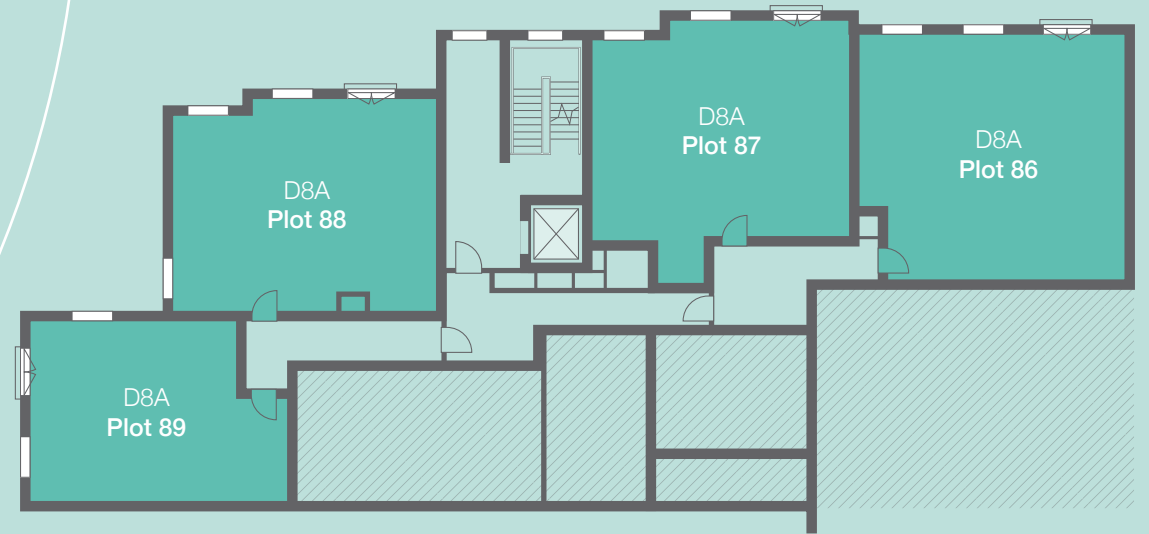
- Fridge/Freezer
- Dishwasher
- Washer/Dryer
- Wardrobe
- Hot Water Cylinder

All floor plans in this brochure are for general guidance only. All room dimensions are subject to a plus/minus 5% tolerance. Measurements are taken from plans representing the largest cross section of each room - actual build may vary. Any dimensions shown are not intended to be used for carpet sizes, appliances, spaces or items of furniture. These particulars do not constitute any part of an offer or contract with regard to the specifications.

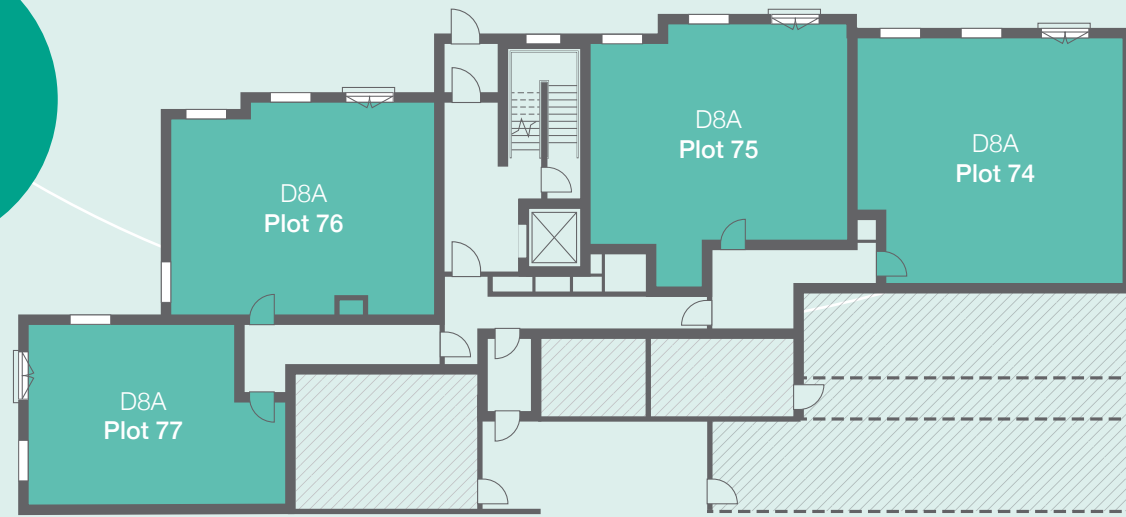
First Floor



Third Floor

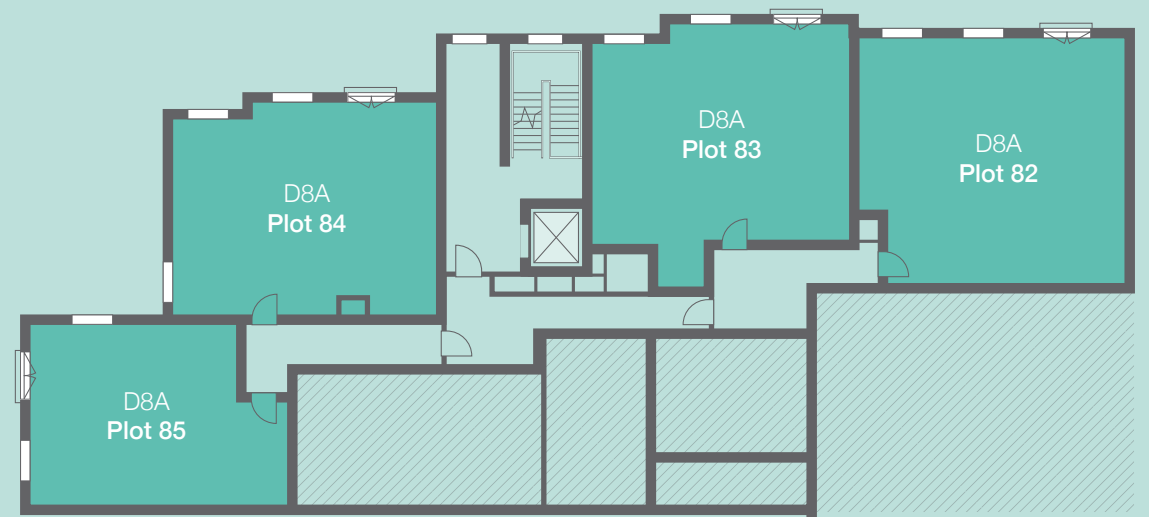


**Block D8A**



Ground Floor

Second Floor

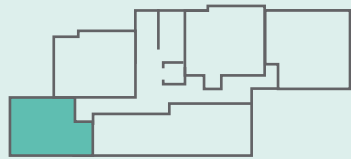
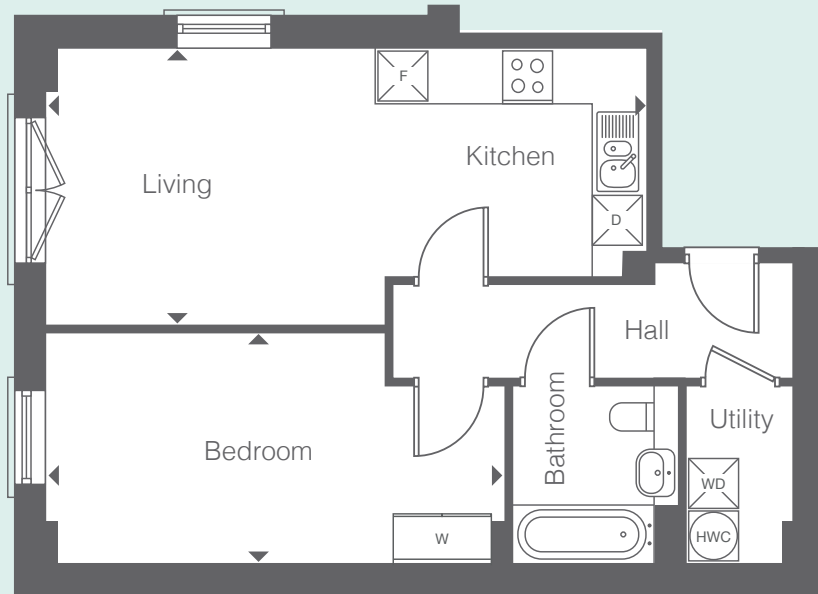


KEY

- SO Resi Shared Ownership
- Residents' Lift

**D8A Type 1**

1 bedroom apartment



| Floor  | Plots |
|--------|-------|
| Ground | 77    |
| First  | 81    |
| Second | 85    |
| Third  | 89    |

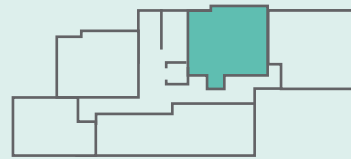
| Room                  | Metric     | Imperial      |
|-----------------------|------------|---------------|
| Living / Kitchen Area | 7.1 x 3.3m | 23'3" x 10'8" |
| Bedroom               | 5.5 x 2.8m | 18'0" x 9'2"  |

- Fridge/Freezer
- Dishwasher
- Washer/Dryer
- Wardrobe
- Hot Water Cylinder

All floor plans in this brochure are for general guidance only. All room dimensions are subject to a plus/minus 5% tolerance. Measurements are taken from plans representing the largest cross section of each room - actual build may vary. Any dimensions shown are not intended to be used for carpet sizes, appliances, spaces or items of furniture. These particulars do not constitute any part of an offer or contract with regard to the specifications.

**D8A Type 2**

2 bedroom apartment



| Floor  | Plots |
|--------|-------|
| Ground | 75    |
| First  | 79    |
| Second | 83    |
| Third  | 87    |

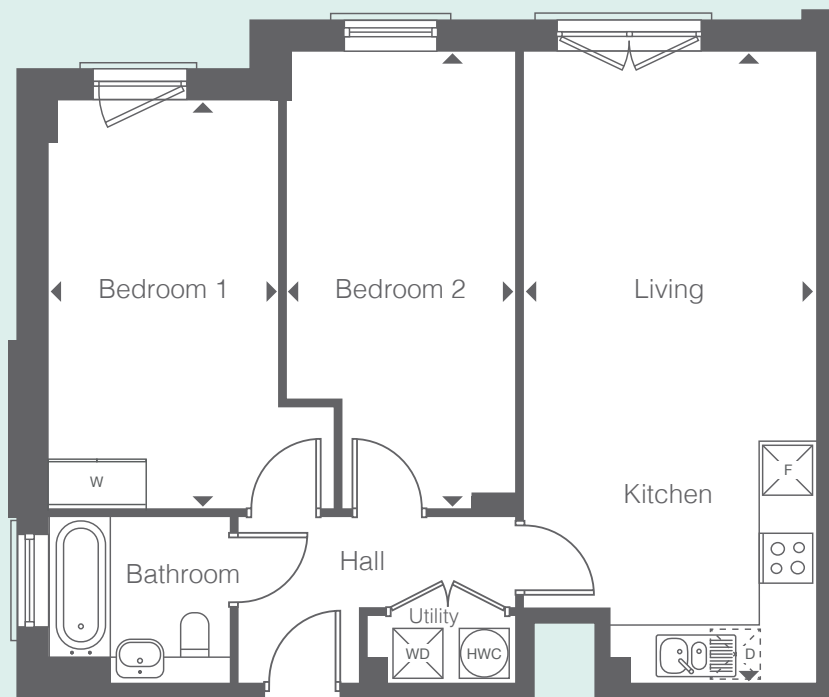
| Room                  | Metric     | Imperial      |
|-----------------------|------------|---------------|
| Living / Kitchen Area | 7.5 x 3.3m | 24'6" x 10'8" |
| Bedroom 1             | 4.9 x 2.8m | 16'1" x 9'2"  |
| Bedroom 2             | 5.6 x 2.8m | 18'4" x 9'2"  |

- Fridge/Freezer
- Dishwasher
- Washer/Dryer
- Wardrobe
- Hot Water Cylinder

All floor plans in this brochure are for general guidance only. All room dimensions are subject to a plus/minus 5% tolerance. Measurements are taken from plans representing the largest cross section of each room - actual build may vary. Any dimensions shown are not intended to be used for carpet sizes, appliances, spaces or items of furniture. These particulars do not constitute any part of an offer or contract with regard to the specifications.

**D8A Type 3**

2 bedroom apartment



N

| Floor  | Plots |
|--------|-------|
| Ground | 76    |
| First  | 80    |
| Second | 84    |
| Third  | 88    |

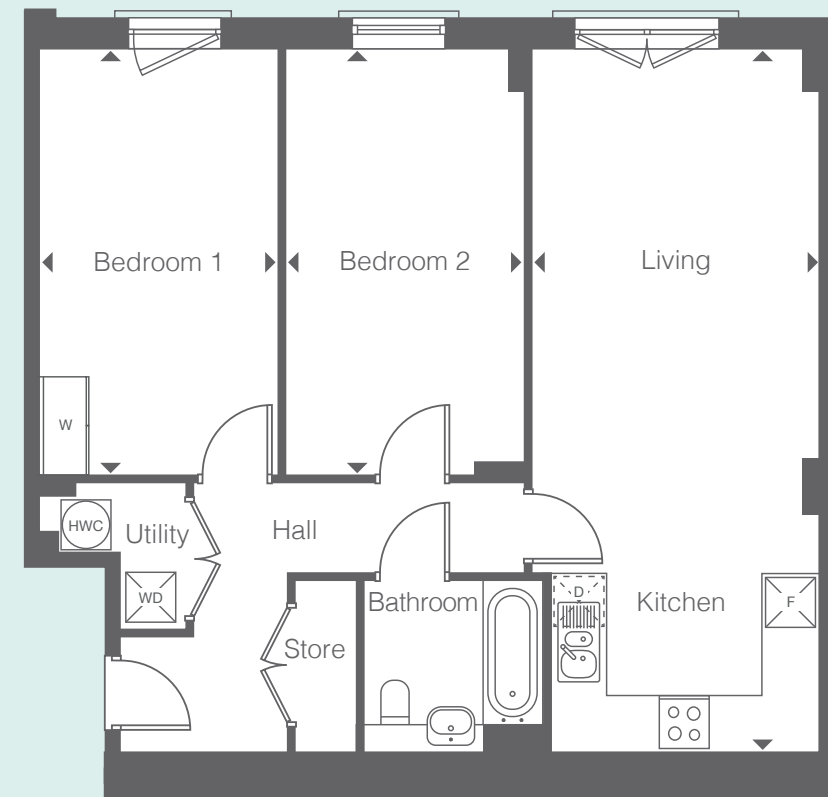
| Room                  | Metric     | Imperial      |
|-----------------------|------------|---------------|
| Living / Kitchen Area | 7.5 x 3.5m | 24'6" x 11'5" |
| Bedroom 1             | 4.9 x 2.8m | 16'1" x 9'2"  |
| Bedroom 2             | 5.4 x 2.8m | 17'7" x 9'2"  |

- Fridge/Freezer
- Dishwasher
- Washer/Dryer
- Wardrobe
- Hot Water Cylinder

All floor plans in this brochure are for general guidance only. All room dimensions are subject to a plus/minus 5% tolerance. Measurements are taken from plans representing the largest cross section of each room - actual build may vary. Any dimensions shown are not intended to be used for carpet sizes, appliances, spaces or items of furniture. These particulars do not constitute any part of an offer or contract with regard to the specifications.

**D8A Type 4**

2 bedroom apartment



N

| Floor  | Plots |
|--------|-------|
| Ground | 74    |
| First  | 78    |
| Second | 82    |
| Third  | 86    |

| Room                  | Metric     | Imperial      |
|-----------------------|------------|---------------|
| Living / Kitchen Area | 8.4 x 3.4m | 27'6" x 11'2" |
| Bedroom 1             | 5.1 x 2.9m | 16'7" x 9'5"  |
| Bedroom 2             | 5.1 x 2.8m | 16'7" x 9'2"  |

- Fridge/Freezer
- Dishwasher
- Washer/Dryer
- Wardrobe
- Hot Water Cylinder

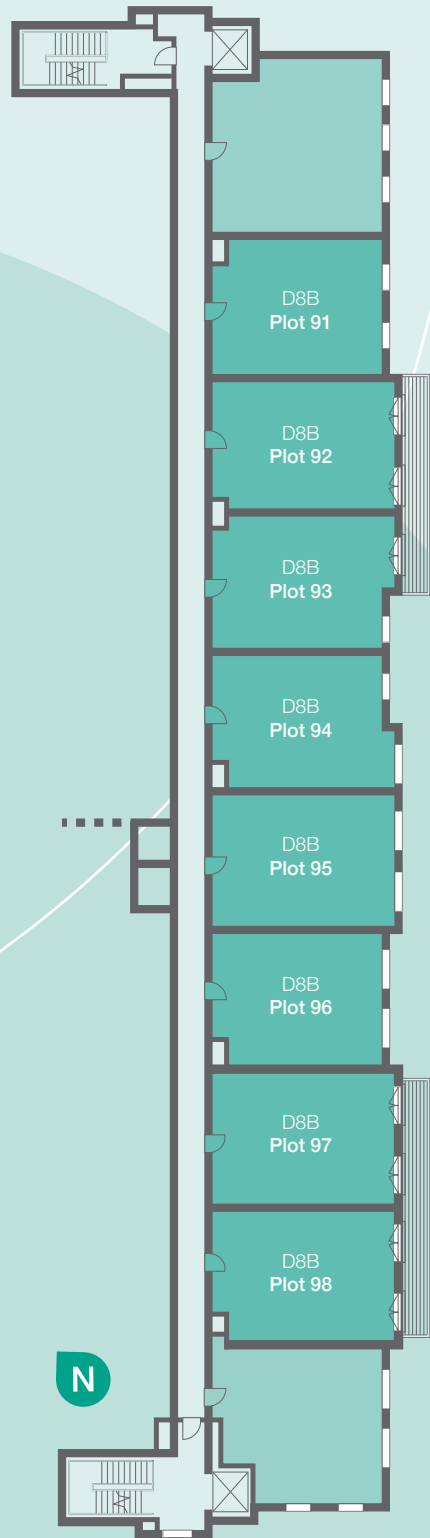
All floor plans in this brochure are for general guidance only. All room dimensions are subject to a plus/minus 5% tolerance. Measurements are taken from plans representing the largest cross section of each room - actual build may vary. Any dimensions shown are not intended to be used for carpet sizes, appliances, spaces or items of furniture. These particulars do not constitute any part of an offer or contract with regard to the specifications.



# Block D8B

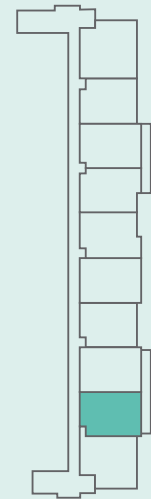
## Second Floor

- KEY
- SO Resi Shared Ownership
  - Private Sale
  - Residents' Lift



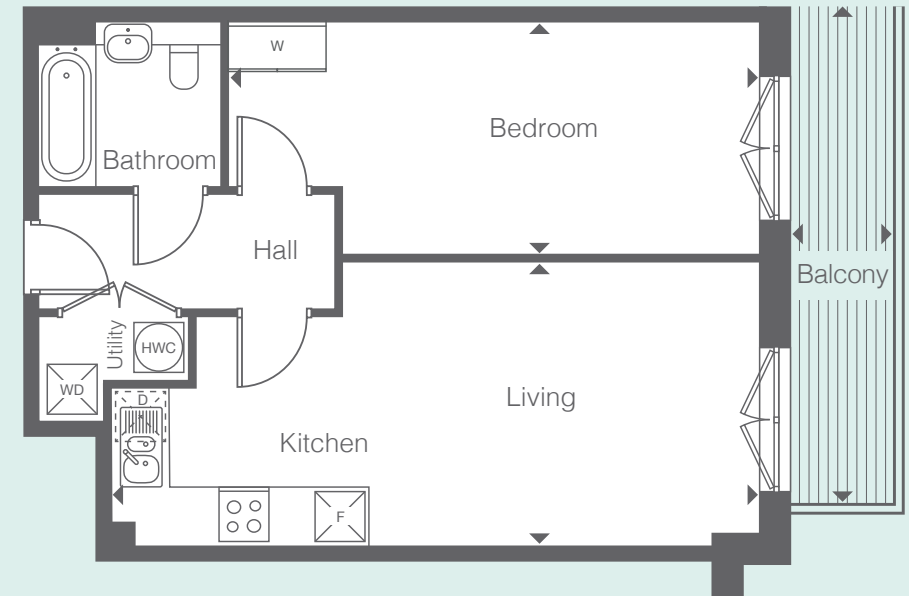
**D8B Type 1**

1 bedroom apartment



**Floor**  
Second

**Plot**  
98



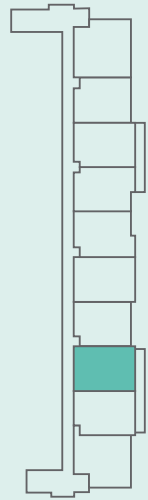
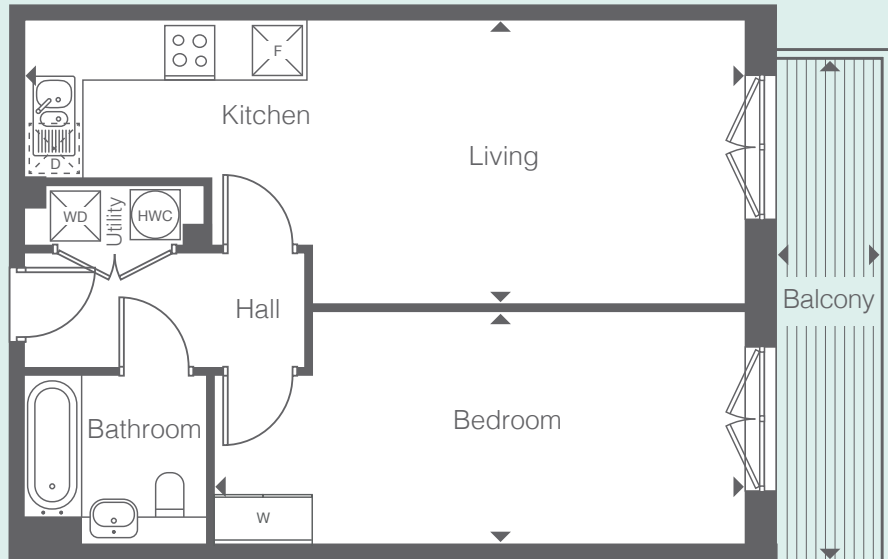
| Room                  | Metric     | Imperial      |
|-----------------------|------------|---------------|
| Living / Kitchen Area | 7.8 x 3.4m | 25'6" x 11'2" |
| Bedroom               | 6.4 x 2.8m | 21'0" x 9'2"  |
| Balcony               | 1.2 x 6.0m | 3'9" x 19'7"  |

- F Fridge/Freezer
- D Dishwasher
- WD Washer/Dryer
- W Wardrobe
- HWC Hot Water Cylinder

All floor plans in this brochure are for general guidance only. All room dimensions are subject to a plus/minus 5% tolerance. Measurements are taken from plans representing the largest cross section of each room - actual build may vary. Any dimensions shown are not intended to be used for carpet sizes, appliances, spaces or items of furniture. These particulars do not constitute any part of an offer or contract with regard to the specifications.

**D8B Type 2**

1 bedroom apartment



**Floor** Second  
**Plot** 97

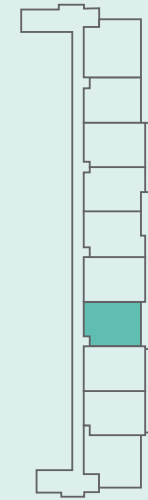
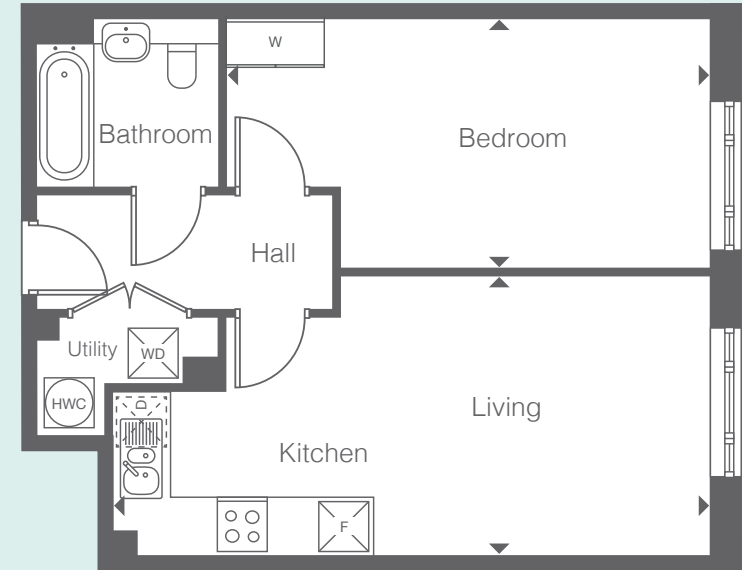
| Room                  | Metric     | Imperial      |
|-----------------------|------------|---------------|
| Living / Kitchen Area | 8.7 x 3.4m | 28'5" x 11'2" |
| Bedroom               | 6.4 x 2.8m | 21'0" x 9'2"  |
| Balcony               | 1.2 x 6.0m | 3'9" x 19'7"  |

- Fridge/Freezer
- Dishwasher
- Washer/Dryer
- Wardrobe
- Hot Water Cylinder

All floor plans in this brochure are for general guidance only. All room dimensions are subject to a plus/minus 5% tolerance. Measurements are taken from plans representing the largest cross section of each room - actual build may vary. Any dimensions shown are not intended to be used for carpet sizes, appliances, spaces or items of furniture. These particulars do not constitute any part of an offer or contract with regard to the specifications.

**D8B Type 3**

1 bedroom apartment



**Floor** Second  
**Plot** 96

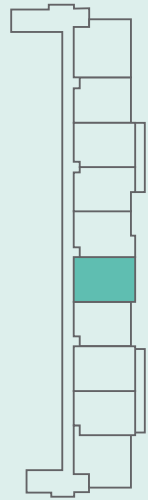
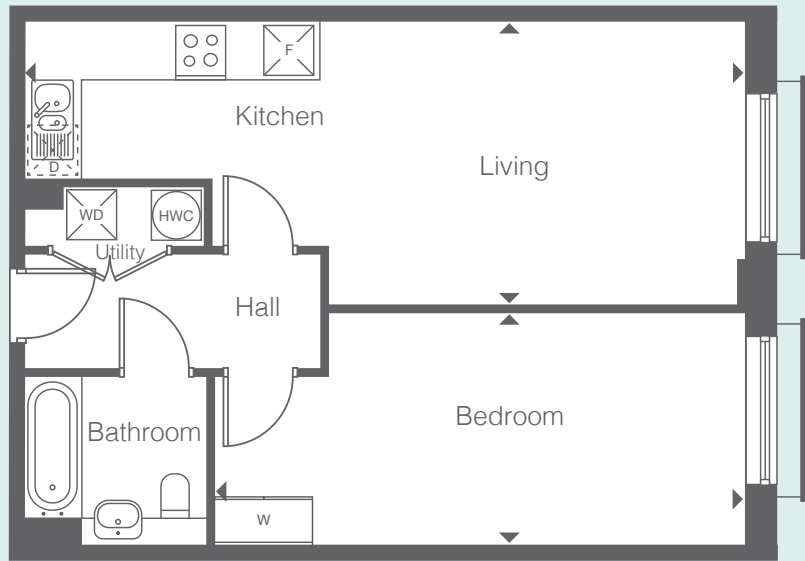
| Room                  | Metric     | Imperial      |
|-----------------------|------------|---------------|
| Living / Kitchen Area | 7.2 x 3.4m | 23'6" x 11'2" |
| Bedroom               | 5.8 x 2.9m | 19'0" x 9'5"  |

- Fridge/Freezer
- Dishwasher
- Washer/Dryer
- Wardrobe
- Hot Water Cylinder

All floor plans in this brochure are for general guidance only. All room dimensions are subject to a plus/minus 5% tolerance. Measurements are taken from plans representing the largest cross section of each room - actual build may vary. Any dimensions shown are not intended to be used for carpet sizes, appliances, spaces or items of furniture. These particulars do not constitute any part of an offer or contract with regard to the specifications.

**D8B Type 4**

1 bedroom apartment



**Floor** Second  
**Plot** 95

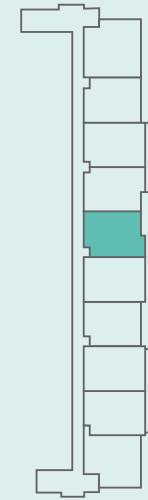
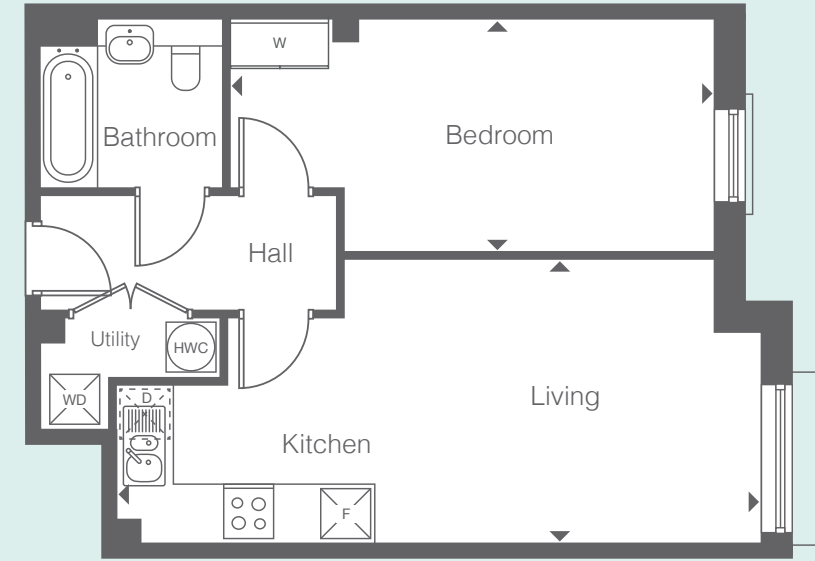
| Room                  | Metric     | Imperial      |
|-----------------------|------------|---------------|
| Living / Kitchen Area | 8.6 x 3.4m | 28'2" x 11'2" |
| Bedroom               | 6.4 x 2.8m | 20'0" x 9'2"  |

- Fridge/Freezer
- Dishwasher
- Washer/Dryer
- Wardrobe
- Hot Water Cylinder

All floor plans in this brochure are for general guidance only. All room dimensions are subject to a plus/minus 5% tolerance. Measurements are taken from plans representing the largest cross section of each room - actual build may vary. Any dimensions shown are not intended to be used for carpet sizes, appliances, spaces or items of furniture. These particulars do not constitute any part of an offer or contract with regard to the specifications.

**D8B Type 5**

1 bedroom apartment



**Floor** Second  
**Plot** 94

| Room                  | Metric     | Imperial      |
|-----------------------|------------|---------------|
| Living / Kitchen Area | 7.7 x 3.4m | 25'3" x 11'2" |
| Bedroom               | 5.8 x 2.8m | 19'0" x 9'2"  |

- Fridge/Freezer
- Dishwasher
- Washer/Dryer
- Wardrobe
- Hot Water Cylinder

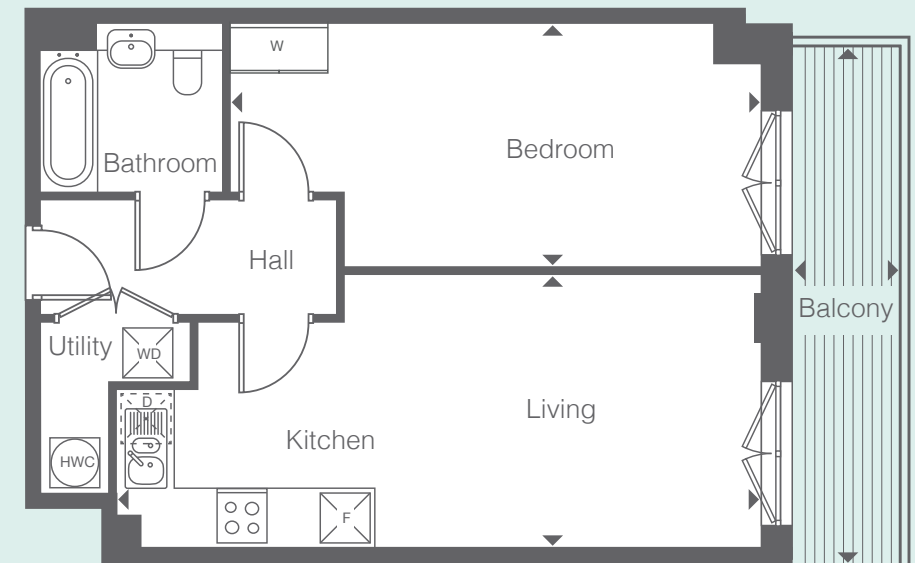
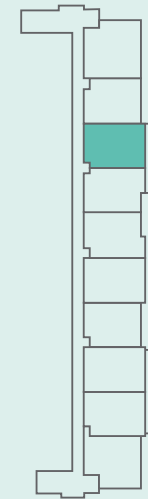
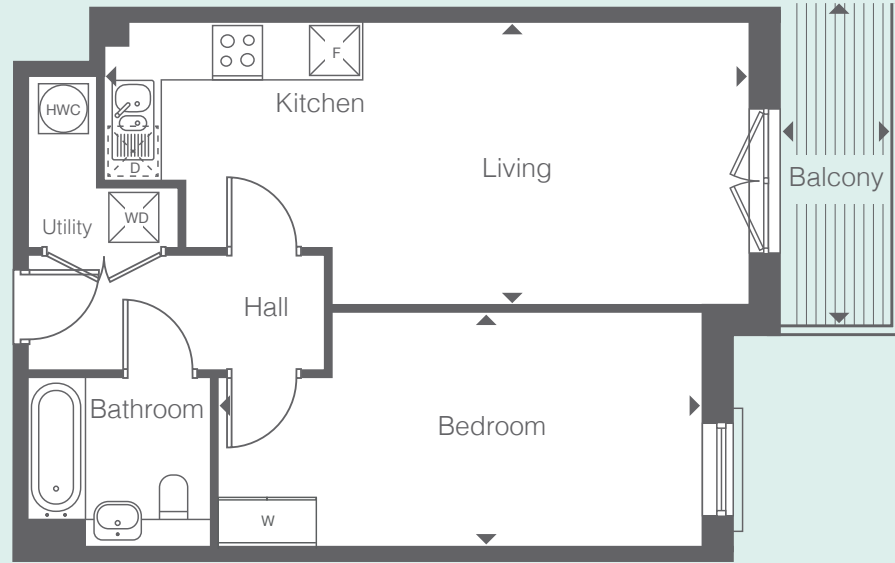
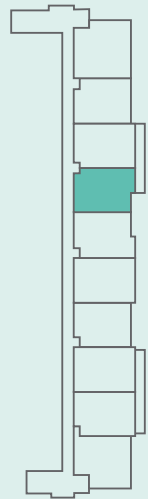
All floor plans in this brochure are for general guidance only. All room dimensions are subject to a plus/minus 5% tolerance. Measurements are taken from plans representing the largest cross section of each room - actual build may vary. Any dimensions shown are not intended to be used for carpet sizes, appliances, spaces or items of furniture. These particulars do not constitute any part of an offer or contract with regard to the specifications.

**D8B Type 6**

1 bedroom apartment

**D8B Type 7**

1 bedroom apartment



**Floor**  
Second

**Plot**  
93

| Room                  | Metric     | Imperial      |
|-----------------------|------------|---------------|
| Living / Kitchen Area | 7.8 x 3.4m | 25'6" x 11'2" |
| Bedroom               | 5.8 x 2.8m | 19'0" x 9'2"  |
| Balcony               | 1.3 x 3.9m | 4'3" x 12'8"  |

- F Fridge/Freezer
- D Dishwasher
- WD Washer/Dryer
- W Wardrobe
- HWC Hot Water Cylinder

All floor plans in this brochure are for general guidance only. All room dimensions are subject to a plus/minus 5% tolerance. Measurements are taken from plans representing the largest cross section of each room - actual build may vary. Any dimensions shown are not intended to be used for carpet sizes, appliances, spaces or items of furniture. These particulars do not constitute any part of an offer or contract with regard to the specifications.

**Floor**  
Second

**Plot**  
92

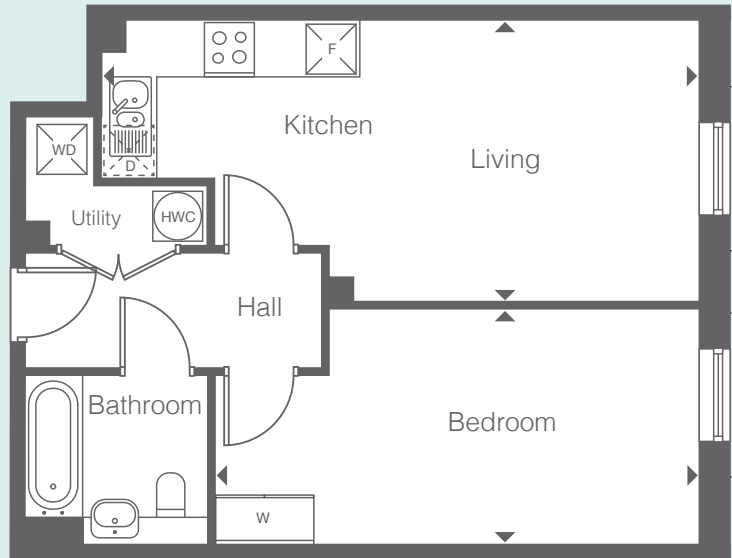
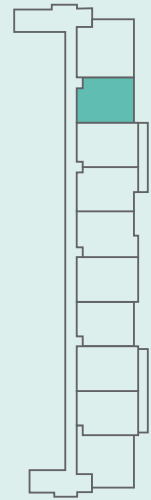
| Room                  | Metric     | Imperial      |
|-----------------------|------------|---------------|
| Living / Kitchen Area | 7.8 x 3.4m | 25'6" x 11'2" |
| Bedroom               | 6.4 x 2.8m | 21'0" x 9'2"  |
| Balcony               | 1.3 x 6.3m | 4'3" x 20'7"  |

- F Fridge/Freezer
- D Dishwasher
- WD Washer/Dryer
- W Wardrobe
- HWC Hot Water Cylinder

All floor plans in this brochure are for general guidance only. All room dimensions are subject to a plus/minus 5% tolerance. Measurements are taken from plans representing the largest cross section of each room - actual build may vary. Any dimensions shown are not intended to be used for carpet sizes, appliances, spaces or items of furniture. These particulars do not constitute any part of an offer or contract with regard to the specifications.

**D8B Type 8**

1 bedroom apartment



**Floor**  
Second

**Plot**  
91

| Room                  | Metric     | Imperial      |
|-----------------------|------------|---------------|
| Living / Kitchen Area | 7.2 x 3.4m | 23'6" x 11'2" |
| Bedroom               | 5.8 x 2.8m | 19'0" x 9'2"  |

- F Fridge/Freezer
- D Dishwasher
- WD Washer/Dryer
- W Wardrobe
- HWC Hot Water Cylinder

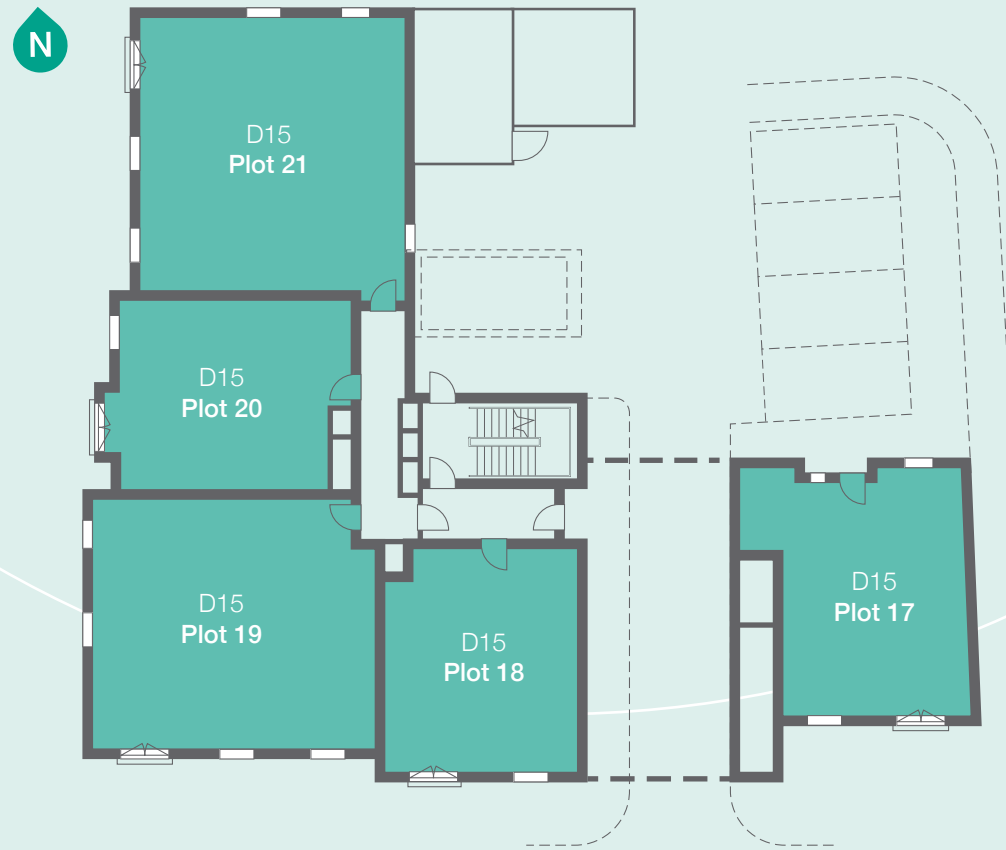
All floor plans in this brochure are for general guidance only. All room dimensions are subject to a plus/minus 5% tolerance. Measurements are taken from plans representing the largest cross section of each room - actual build may vary. Any dimensions shown are not intended to be used for carpet sizes, appliances, spaces or items of furniture. These particulars do not constitute any part of an offer or contract with regard to the specifications.




Computer Generated Image: SO Resi Farnham Block D8B

# Block D15

## Ground Floor



KEY

 SO Resi Shared Ownership

 Residents' Lift

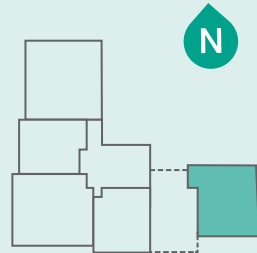
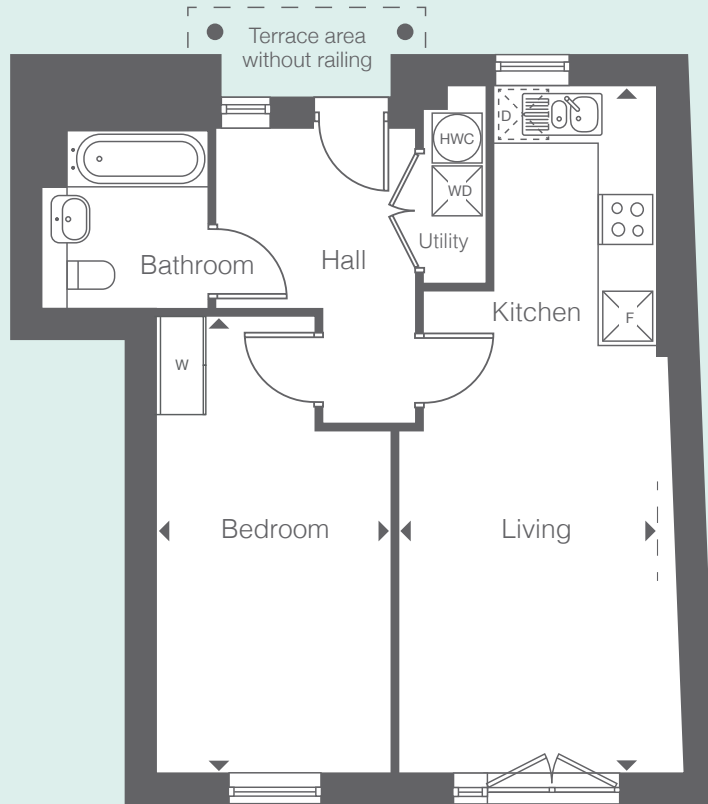
## Second Floor



## First Floor

**D15 Type 1**

1 bedroom apartment



| Floor  | Plot |
|--------|------|
| Ground | 17   |
| First  | -    |
| Second | -    |

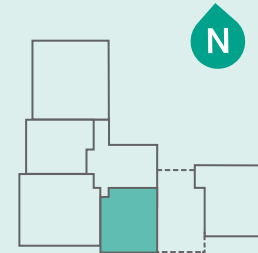
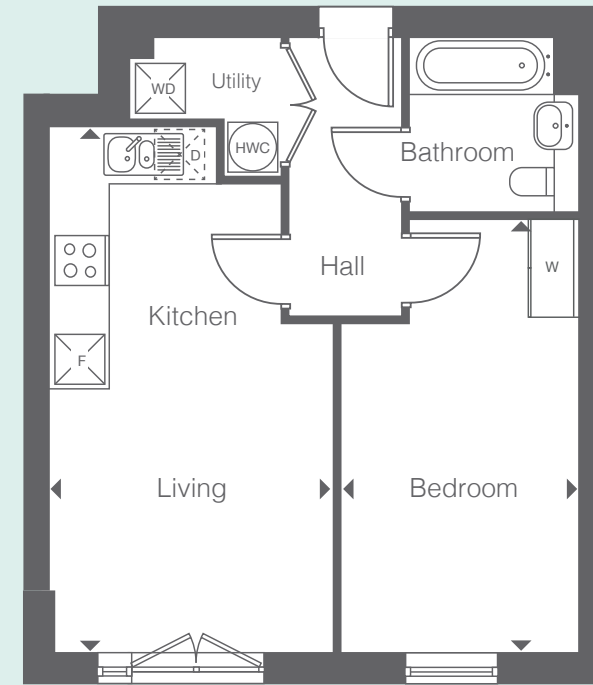
| Room                  | Metric     | Imperial      |
|-----------------------|------------|---------------|
| Living / Kitchen Area | 8.2 x 3.1m | 26'9" x 10'2" |
| Bedroom               | 5.4 x 2.9m | 17'7" x 9'5"  |

- F Fridge/Freezer
- D Dishwasher
- WD Washer/Dryer
- W Wardrobe
- HWC Hot Water Cylinder

All floor plans in this brochure are for general guidance only. All room dimensions are subject to a plus/minus 5% tolerance. Measurements are taken from plans representing the largest cross section of each room - actual build may vary. Any dimensions shown are not intended to be used for carpet sizes, appliances, spaces or items of furniture. These particulars do not constitute any part of an offer or contract with regard to the specifications.

**D15 Type 2**

1 bedroom apartment



| Floor  | Plot |
|--------|------|
| Ground | 18   |
| First  | -    |
| Second | -    |

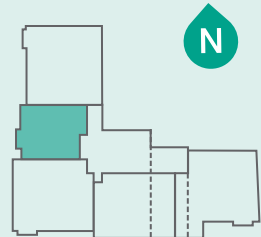
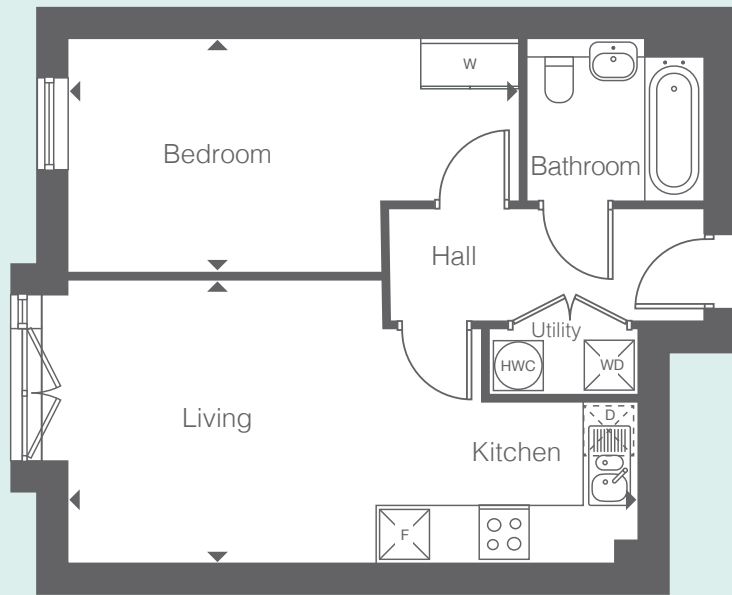
| Room                  | Metric     | Imperial      |
|-----------------------|------------|---------------|
| Living / Kitchen Area | 6.3 x 3.4m | 20'7" x 11'2" |
| Bedroom               | 5.2 x 2.9m | 17'1" x 9'5"  |

- F Fridge/Freezer
- D Dishwasher
- WD Washer/Dryer
- W Wardrobe
- HWC Hot Water Cylinder

All floor plans in this brochure are for general guidance only. All room dimensions are subject to a plus/minus 5% tolerance. Measurements are taken from plans representing the largest cross section of each room - actual build may vary. Any dimensions shown are not intended to be used for carpet sizes, appliances, spaces or items of furniture. These particulars do not constitute any part of an offer or contract with regard to the specifications.

**D15 Type 3**

1 bedroom apartment



| Floor  | Plots |
|--------|-------|
| Ground | 20    |
| First  | 25    |
| Second | 30    |

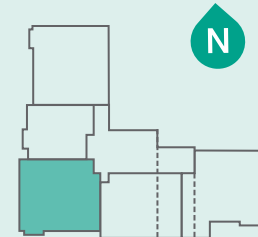
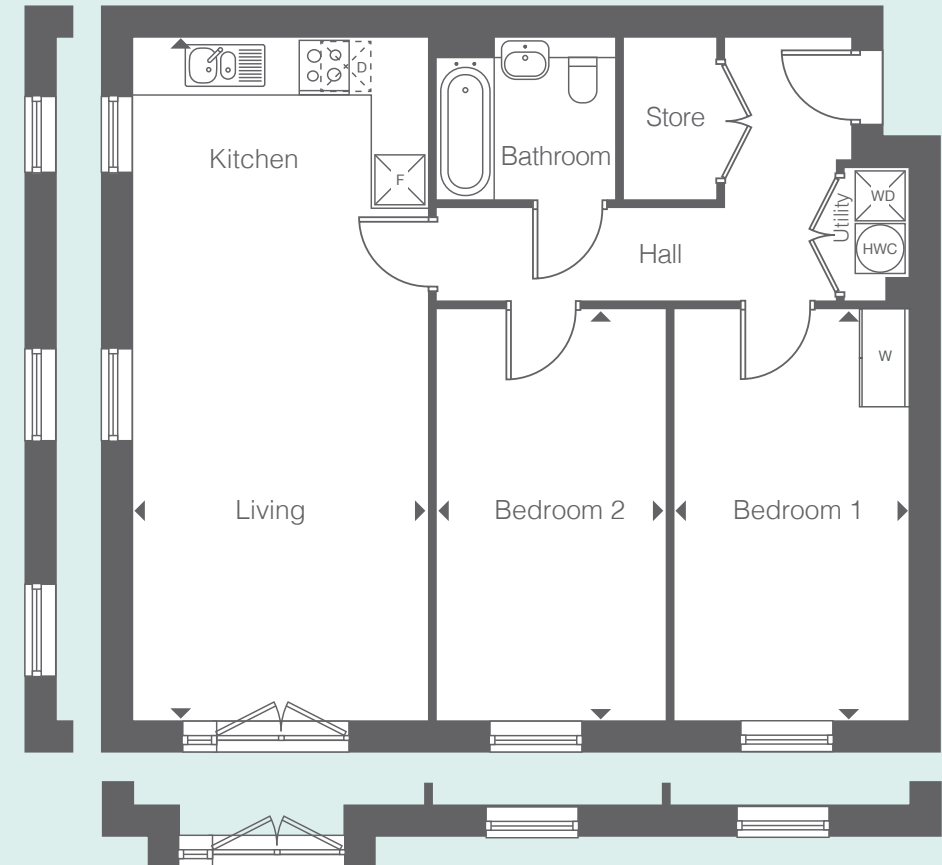
| Room                  | Metric     | Imperial      |
|-----------------------|------------|---------------|
| Living / Kitchen Area | 6.8 x 3.4m | 22'3" x 11'2" |
| Bedroom               | 5.4 x 2.9m | 17'7" x 9'5"  |

- Fridge/Freezer
- Dishwasher
- Washer/Dryer
- Wardrobe
- Hot Water Cylinder

All floor plans in this brochure are for general guidance only. All room dimensions are subject to a plus/minus 5% tolerance. Measurements are taken from plans representing the largest cross section of each room - actual build may vary. Any dimensions shown are not intended to be used for carpet sizes, appliances, spaces or items of furniture. These particulars do not constitute any part of an offer or contract with regard to the specifications.

**D15 Type 4**

2 bedroom apartment



| Floor  | Plots           |
|--------|-----------------|
| Ground | 19              |
| First  | 24 <sup>§</sup> |
| Second | 29 <sup>§</sup> |

<sup>§</sup> Window Layout Variation

| Room                  | Metric     | Imperial      |
|-----------------------|------------|---------------|
| Living / Kitchen Area | 8.2 x 3.5m | 26'9" x 11'5" |
| Bedroom 1             | 4.9 x 2.9m | 16'1" x 9'5"  |
| Bedroom 2             | 4.9 x 2.8m | 16'1" x 9'2"  |

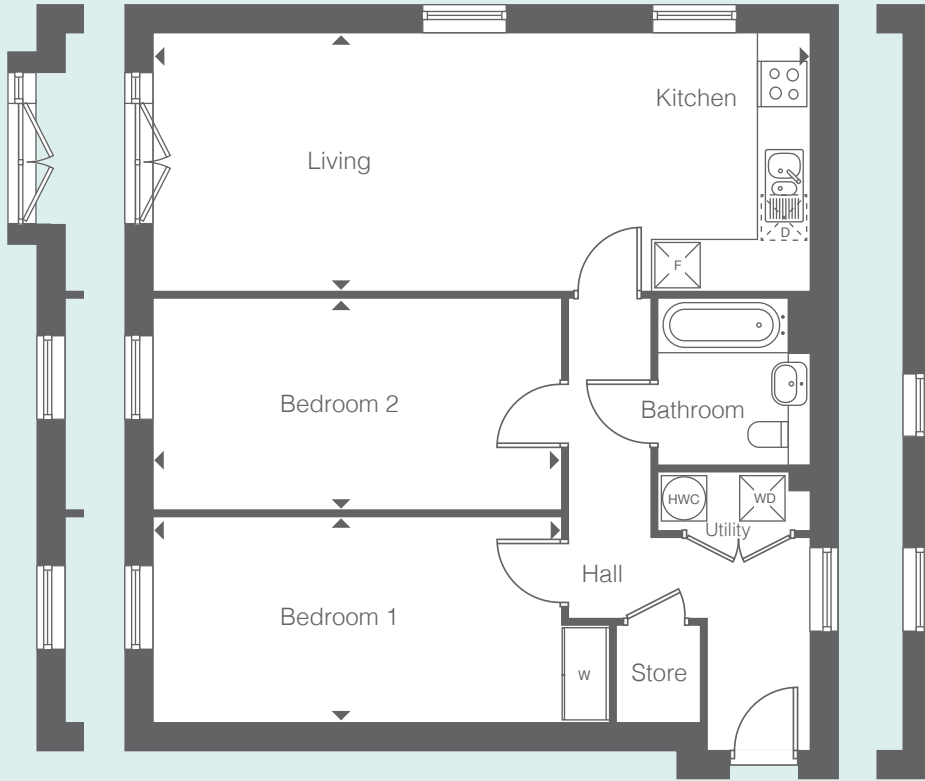
- Fridge/Freezer
- Dishwasher
- Washer/Dryer
- Wardrobe
- Hot Water Cylinder

All floor plans in this brochure are for general guidance only. All room dimensions are subject to a plus/minus 5% tolerance. Measurements are taken from plans representing the largest cross section of each room - actual build may vary. Any dimensions shown are not intended to be used for carpet sizes, appliances, spaces or items of furniture. These particulars do not constitute any part of an offer or contract with regard to the specifications.



**D15 Type 5**

2 bedroom apartment



| Floor  | Plots           |
|--------|-----------------|
| Ground | 21              |
| First  | 26 <sup>§</sup> |
| Second | 31 <sup>§</sup> |

<sup>§</sup> Window Layout Variation

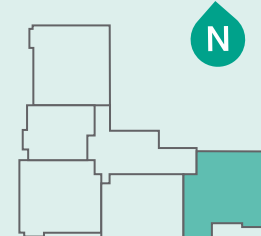
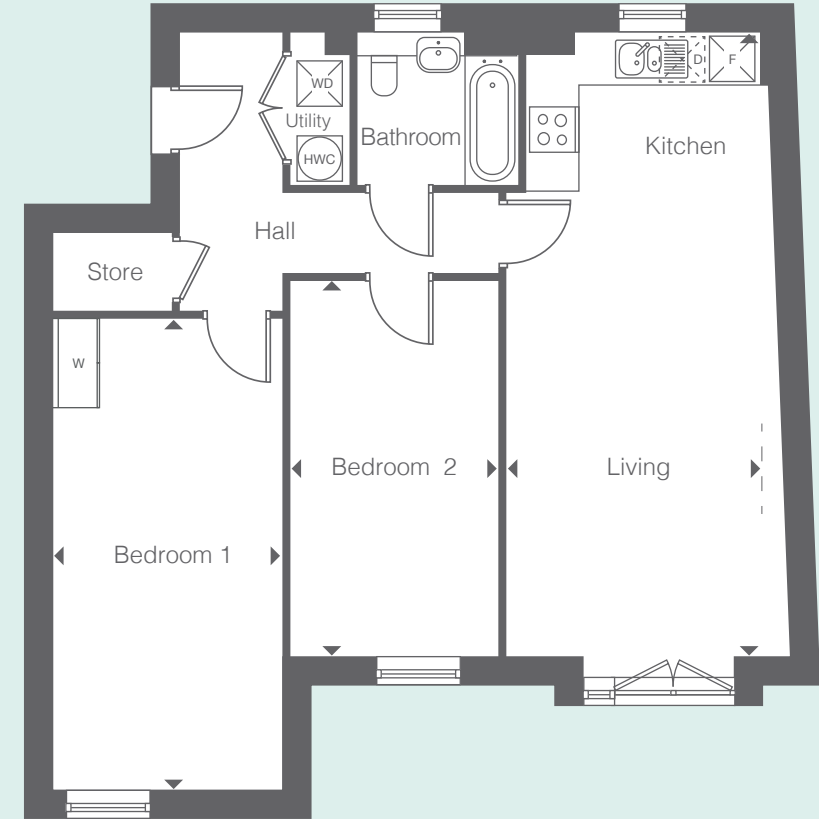
| Room                  | Metric     | Imperial      |
|-----------------------|------------|---------------|
| Living / Kitchen Area | 8.7 x 3.4m | 28'5" x 11'2" |
| Bedroom 1             | 5.4 x 2.7m | 17'7" x 8'9"  |
| Bedroom 2             | 5.4 x 2.8m | 17'7" x 8'9"  |

- F Fridge/Freezer
- D Dishwasher
- WD Washer/Dryer
- W Wardrobe
- HWC Hot Water Cylinder

All floor plans in this brochure are for general guidance only. All room dimensions are subject to a plus/minus 5% tolerance. Measurements are taken from plans representing the largest cross section of each room - actual build may vary. Any dimensions shown are not intended to be used for carpet sizes, appliances, spaces or items of furniture. These particulars do not constitute any part of an offer or contract with regard to the specifications.

**D15 Type 6**

2 bedroom apartment



| Floor  | Plots |
|--------|-------|
| Ground | -     |
| First  | 22    |
| Second | 27    |

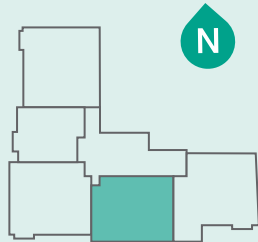
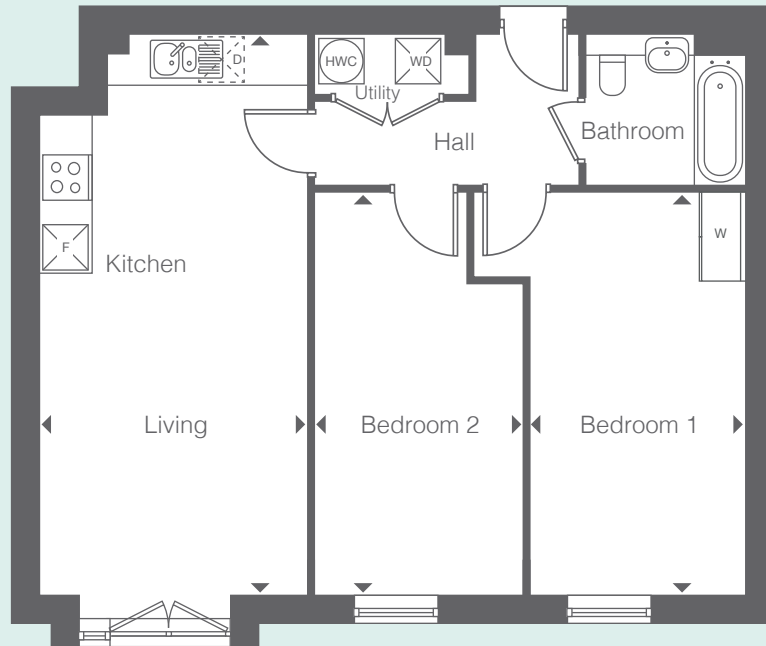
| Room                  | Metric     | Imperial      |
|-----------------------|------------|---------------|
| Living / Kitchen Area | 8.2 x 3.1m | 26'9" x 10'2" |
| Bedroom 1             | 6.2 x 3.1m | 20'3" x 10'2" |
| Bedroom 2             | 4.9 x 2.8m | 16'1" x 9'2"  |

- F Fridge/Freezer
- D Dishwasher
- WD Washer/Dryer
- W Wardrobe
- HWC Hot Water Cylinder

All floor plans in this brochure are for general guidance only. All room dimensions are subject to a plus/minus 5% tolerance. Measurements are taken from plans representing the largest cross section of each room - actual build may vary. Any dimensions shown are not intended to be used for carpet sizes, appliances, spaces or items of furniture. These particulars do not constitute any part of an offer or contract with regard to the specifications.




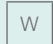

D15 Type 7

2 bedroom apartment



| Floor  | Plots |
|--------|-------|
| Ground | -     |
| First  | 23    |
| Second | 28    |

| Room                  | Metric     | Imperial      |
|-----------------------|------------|---------------|
| Living / Kitchen Area | 7.4 x 3.7m | 24'3" x 12'1" |
| Bedroom 1             | 5.3 x 2.9m | 17'4" x 9'5"  |
| Bedroom 2             | 5.3 x 2.8m | 17'4" x 9'2"  |

-  Fridge/Freezer
-  Dishwasher
-  Washer/Dryer
-  Wardrobe
-  Hot Water Cylinder

All floor plans in this brochure are for general guidance only. All room dimensions are subject to a plus/minus 5% tolerance. Measurements are taken from plans representing the largest cross section of each room - actual build may vary. Any dimensions shown are not intended to be used for carpet sizes, appliances, spaces or items of furniture. These particulars do not constitute any part of an offer or contract with regard to the specifications.



**With SO Resi, you buy your own home in your own way. You start with a share that's right for you, then you can buy extra shares over time, so it's all manageable and suits your income.**

You start by buying between 10% and 75% of your SO Resi home. That means your monthly mortgage payments and deposit are smaller than they would be if you bought your home outright. There are two other monthly payments for your SO Resi home. One is the SO Resi payment for the share of your home that Metropolitan Thames Valley owns. The other is the service charge, which pays to look after the building you live in. There are also the usual other costs, like household utility bills. You can choose to buy a bigger share of your SO Resi home in the future, and even own 100%. The bigger the share you own, the lower your SO Resi payment will be.

**We're here to help**

Whatever your needs, we're on hand to help at every stage. First we'll help you understand all the costs and work out what's affordable for you. If you decide to go ahead, we'll be there to answer your questions. And in the future, we can help you with buying a bigger share of your home, or with selling up if it's time for a change.

**You can sell your share at any time if you decide to move on.**

**Call: 020 8607 0550  
Email: [sales@soresi.co.uk](mailto:sales@soresi.co.uk)  
or visit: [sharedownership.co.uk](http://sharedownership.co.uk)**

Metropolitan Thames Valley has taken all reasonable care in the preparation of the information given in this brochure. However, this information is subject to change and has been prepared solely for the purpose of providing general guidance. Metropolitan Thames Valley does not warrant the accuracy or completeness of this information. Particulars are given for illustrative purposes only. Metropolitan Thames Valley undertakes continuous product development and any information given relating to our products may vary from time to time. The information and particulars set out within this brochure do not constitute part of a formal offer invitation or contract to acquire the relevant property. For the reasons mentioned above, no information contained in this brochure is to be relied upon. In particular, all plans prospectus, descriptions, dimensions and measurements are approximate and provided for guidance only. Such information is given without responsibility on the part of Metropolitan Thames Valley.

