

Fontwell

Sage@

Fontwell Meadows



Live life to the full

Step into your new life.

Fontwell Meadows is a brand new development not far from the spectacular South Coast. This lively new community offers you a semi-rural life with local amenities available in the development and in nearby Worthing and Portsmouth. Great travel links can get you to the beach in 15 minutes or Chichester in 12 minutes.

Welcome home

Finding a space of your own is within reach with our new 1 & 2 bedroom Shared Ownership apartments..





Fontwell Meadows

Fontwell meadows is perfectly situated between the stunning countryside of the south downs and the popular south coast. Surrounded by both bustling towns and quiet countryside there is something for everyone in this corner of Sussex



The traditional and ever popular seaside resort of Bognor Regis has a busy town centre and a long shingle beach. Bognor Regis holds events all summer and has a wide selection of restaurants, cafes, pubs and bars.

Your new home is opposite the Fontwell Park Racecourse, the only remaining figure of eight jump track in the UK. A full calendar of events is held at the course throughout the year



The nearby historic market town of Arundel with its independent shops, art galleries, cafes and bars all set around the gothic Cathedral and majestic Castle is a definite on the list of places to visit



Chichester is the only city in Sussex, originally a Roman city there is evidence of its history throughout. There is plenty to see and do in Chichester including city centre shops, theatres and parks or you can head off to the Harbour for sailing and the wildlife



Get outside at the South Downs national park. Rolling green hills, walking and cycling trails, incredible wildlife and picturesque villages, known as the 'gateway to England'.



Littlehampton sits on the coast south of Fontwell. It has two award winning beaches and the beautiful river Arun.

In nearby Westergate and Eastergate are a selection of facilities including a pub, shop, restaurants, doctors surgery, sports centre and schools

“Fontwell Meadows offers apartment living between the downs and the coast”





Spacious and well lit bedrooms



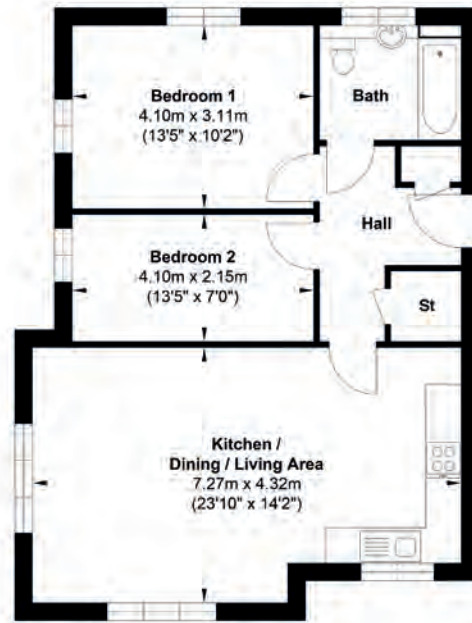
High specification kitchens and appliances



Room to relax and unwind

Block B Plots 1, 3, 5

Two bedroom apartment

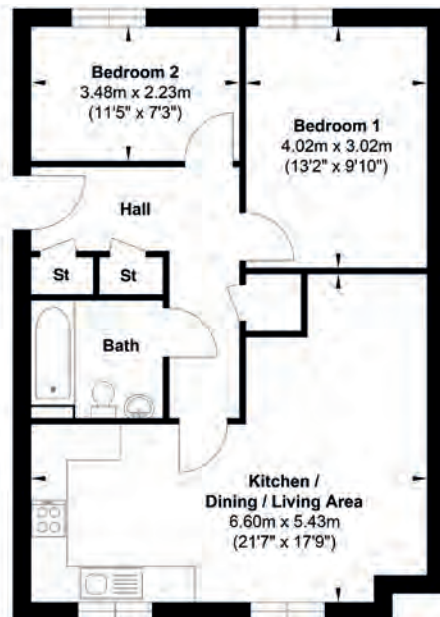


INTERNAL AREA:

63.56M² | 684.20FT²

Block B Plots 2, 4, 6

Two bedroom apartment



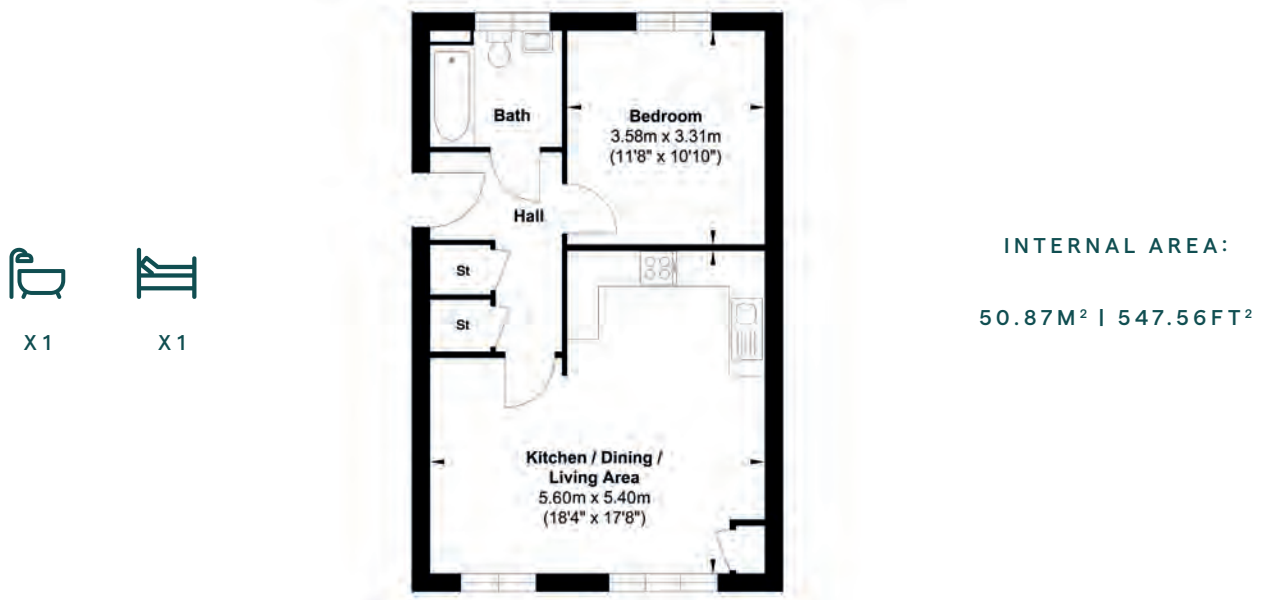
INTERNAL AREA:

62.62M² | 674.04FT²

NB: Whilst every attempt has been made to ensure the accuracy of the floor plan contained here, measurements of doors, windows, rooms and any other items are approximate and no responsibility is taken for any error, omission or mis-statement. This plan is for illustrative purposes only and should be used as such by any prospective purchaser. The services, systems and appliances shown have not been tested and no guarantee as to their operability or efficiency can be given.

Block C Plots 14, 16, 18

One bedroom apartment



Block C Plots 19, 21, 23

Two bedroom apartment

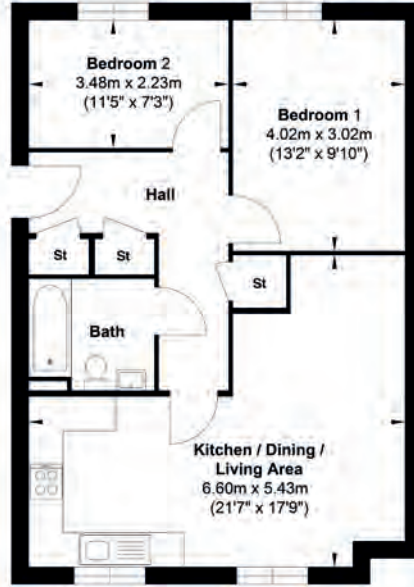


NB: Whilst every attempt has been made to ensure the accuracy of the floor plan contained here, measurements of doors, windows, rooms and any other items are approximate and no responsibility is taken for any error, omission or mis-statement. This plan is for illustrative purposes only and should be used as such by any prospective purchaser. The services, systems and appliances shown have not been tested and no guarantee as to their operability or efficiency can be given.

Block C Plots 26, 28, 30

Two bedroom apartment

X 1  X 2 



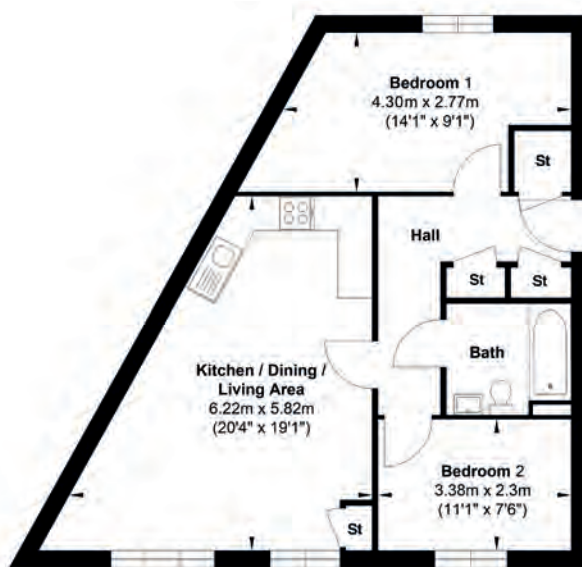
INTERNAL AREA:

61.95M² | 666.82FT²

Block C Plot 25, 27, 29

Two bedroom apartment

X 1  X 2 



INTERNAL AREA:

61.65M² | 662.51FT²

NB: Whilst every attempt has been made to ensure the accuracy of the floor plan contained here, measurements of doors, windows, rooms and any other items are approximate and no responsibility is taken for any error, omission or mis-statement. This plan is for illustrative purposes only and should be used as such by any prospective purchaser. The services, systems and appliances shown have not been tested and no guarantee as to their operability or efficiency can be given.

Block C Plots 20, 22, 24

One bedroom apartment

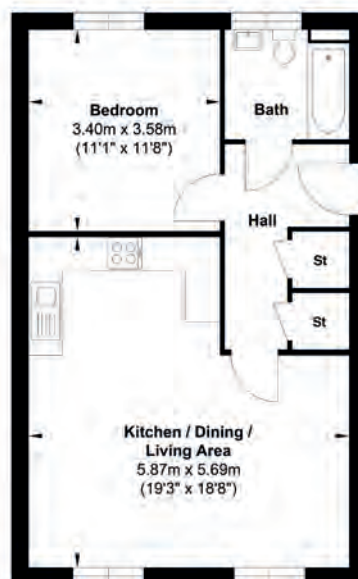


INTERNAL AREA:

51.20² | 551.11FT²

Block C Plot 13, 15, 17

One bedroom apartment

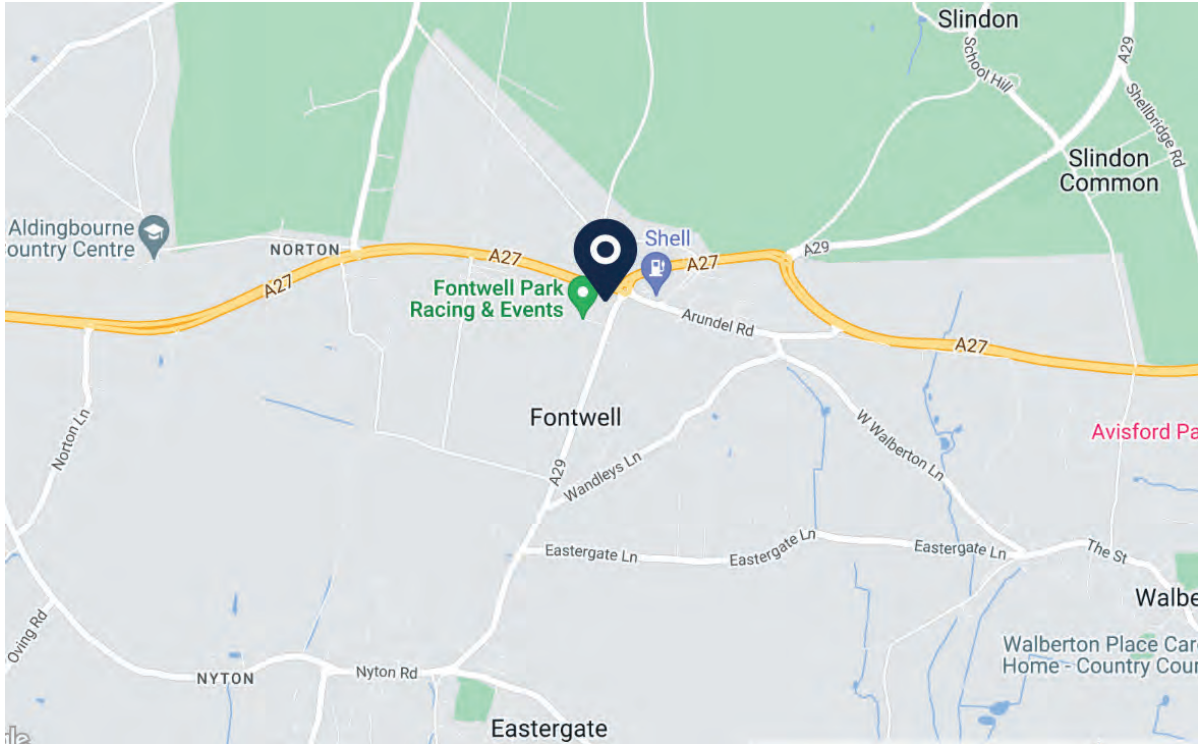


INTERNAL AREA:

54.34M² | 584.91FT²

NB: Whilst every attempt has been made to ensure the accuracy of the floor plan contained here, measurements of doors, windows, rooms and any other items are approximate and no responsibility is taken for any error, omission or mis-statement. This plan is for illustrative purposes only and should be used as such by any prospective purchaser. The services, systems and appliances shown have not been tested and no guarantee as to their operability or efficiency can be given.

Location



Walking

- Shell
3 mins
- Fontwell Racecourse
5 mins
- Denmans Garden
8 mins



Train

- Barnham to Chichester
7 mins
- Barnham to Worthing
17 mins
- Portsmouth to London
1hr 49mins



Car

- Chichester
12 mins
- Bognor regis Beach
15 mins
- Portsmouth
35 mins

Specification

General Specification

Carpet to Living area and bedrooms
Laminate to living/kitchn/dining/hall
Downlights in bathrooms
Pendant lights in other rooms
Select compact radiators
TV/Satelite outlet in living area

Kitchen Specification

Hacienda fitted kitchen
Soft close kitchen doors
Stainless steel splashback
Zanussi Electric integrated oven
Zanussi gas hob
Downlights in kitchen areas



Who are Sage Homes?

Sage Homes provides good quality affordable housing across England. We work with the largest house builders to offer brand new housing for shared ownership (part buy, part rent) and low-cost rental homes.

We have handed over the keys to 5,000 homes since 2017. There are more than 14,000 more under contract, helping us make sure there is more housing available, within the reach of as many people as possible.

Our customers are at the heart of our business and we're always looking for new ways to provide good service in great homes.

We are a registered provider of social housing and became an investment partner of Homes England in 2019, enabling us to offer grant funding for affordable homes.

[sagehomes.co.uk](https://www.sagehomes.co.uk)



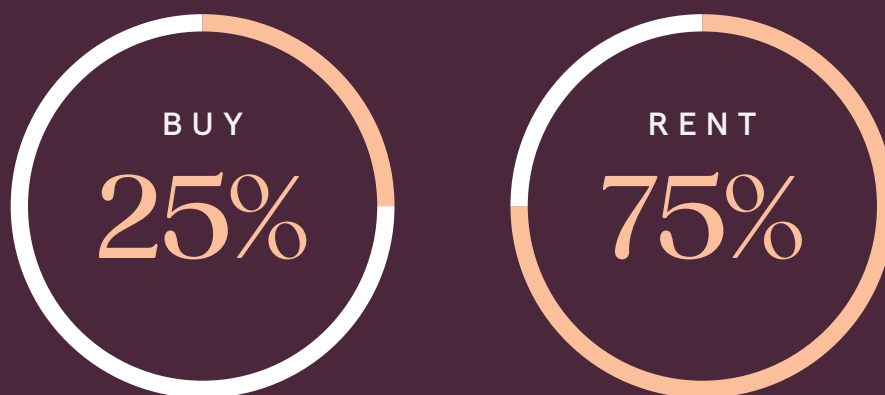
What is Shared Ownership?

Shared Ownership offers you the chance to buy a share of your very own home and pay rent on the remaining share*.

With Shared Ownership you start by buying a share in your home, between 25% and 75% of the full value. Your deposit is based on the share you buy, not the full value. You will pay a mortgage on the share you own and pay rent to Sage on the share you don't own. As and when you can afford to, you can buy greater shares in your home, up to 100%. This is a process called staircasing.

Shared Ownership is a great option if you can't quite afford the mortgage on 100% of a home or don't have a large deposit that buying outright often requires.

Shared Ownership example





Sage Homes
5th Floor, Orion House
5 Upper St Martin's Lane
London WC2H 9EA

Tel:
[sagehomes.co.uk/sales/](https://www.sagehomes.co.uk/sales/)
VAT Reg. no. GB 348 9084 59