



Persona Homes

by Home Group

KING EDWARDS PARK

MORPETH

Eveleigh

3-bedroom house

A great choice for modern family living, the Eveleigh has lots to offer and is a popular choice.

The separate living room opens onto the garden making this a perfect place for relaxing. The kitchen/dining area is sure to be the heart of the home. Add to this an en-suite to the main bedroom, a modern family bathroom and a handy downstairs cloakroom - you can see why this home is proving to be a popular choice.



Contact us:

T: 0800 030 8888

E: contactus@yourpersonahome.com

W: yourpersonahome.com

King Edwards Park, Marketing Suite, Morpeth, NE61 2NU

Ground floor

Kitchen/dining 4.81m x 2.80m

Lounge 5.01m x 3.22m

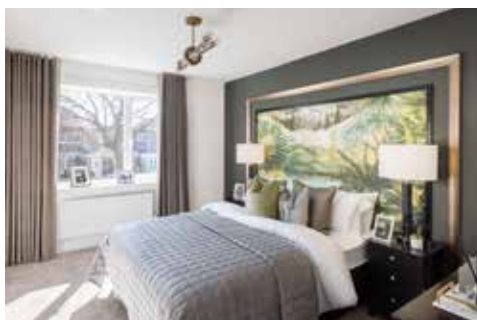
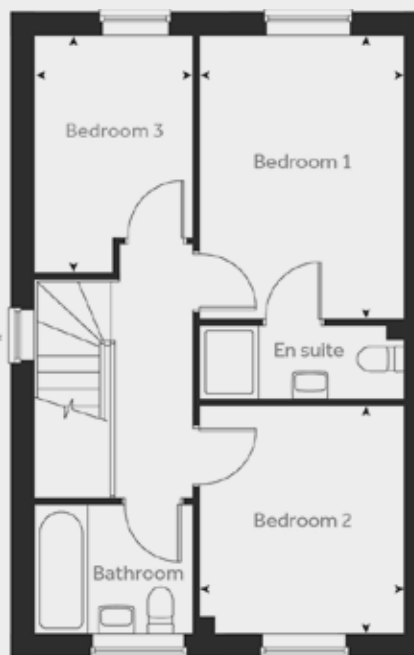
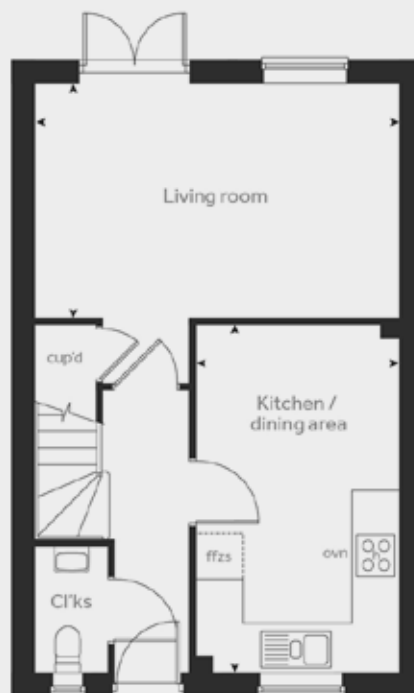
First floor

Master bedroom 3.84m x 2.77m

Bedroom 2 3.10m x 2.77m

Bedroom 3 3.22m x 2.15m

Total home area 82.58m²



Any floor plans are a general outline of the layout of the property for guidance only. All measurements are approximate and may vary and any intending purchasers should not rely on them as statements of fact or representations of fact but must satisfy themselves by inspection or otherwise as to their accuracy. Dimensions shown are not intended to be relied upon for installation of appliances or items of furniture or otherwise. Cgi's and images are for illustrative purposes only.



Persona Homes

by Home Group

KING EDWARDS PARK

MORPETH

Harcourt

2-bedroom house

The smart choice for getting your foot onto the property ladder, the Harcourt is a great starter home.

The front-facing open plan kitchen/dining area is a great space for entertaining and means you're never too far from your guests. The separate living room is a lovely place to relax with French doors that lead out to the garden. With two double bedrooms and a handy downstairs cloakroom, this home has a lot to offer.



Contact us:

T: 0800 030 8888

E: contactus@yourpersonahome.com

W: yourpersonahome.com

King Edwards Park, Marketing Suite, Morpeth, NE61 2NU

Ground floor

Kitchen/dining 4.59m x 2.01m

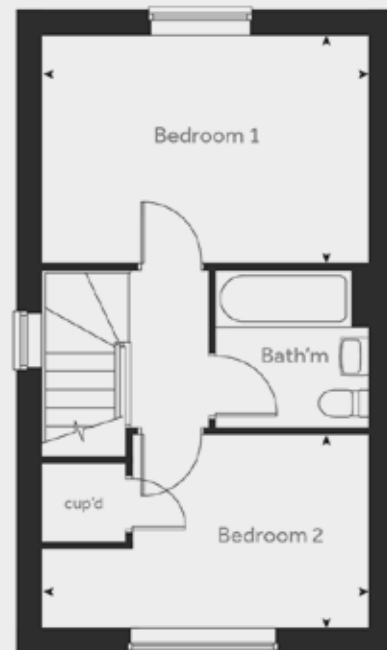
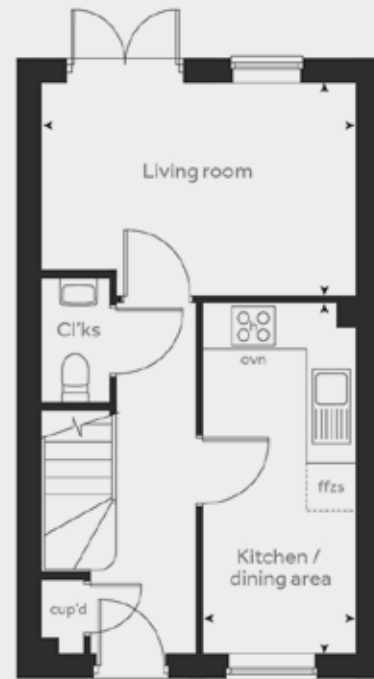
Lounge 4.11m x 2.77m

First floor

Master bedroom 4.08m x 2.86m

Bedroom 2 4.11m x 2.43m

Total home area 62.26m²



Any floor plans are a general outline of the layout of the property for guidance only. All measurements are approximate and may vary and any intending purchasers should not rely on them as statements of fact or representations of fact but must satisfy themselves by inspection or otherwise as to their accuracy. Dimensions shown are not intended to be relied upon for installation of appliances or items of furniture or otherwise. Cgi's and images are for illustrative purposes only.