



# Meon Vale.

Long Marston, CV37 8YH

A range of 2 and 3 bedroom  
Shared Ownership homes.





Rose & Crown Cottage, Long Marston



The Sun Inn, Long Marston

# Discover Long Marston.

**Built by award-winning homebuilders, St. Modwen Homes, Meon Vale is our newest offering of two and three bedroom Shared Ownership homes set in the charming village of Long Marston in the district of Stratford-upon-Avon.**

The village is surrounded by beautiful Warwickshire countryside, offering picturesque views and ample opportunities for outdoor activities. The nearby Cotswolds, an area of outstanding natural beauty, is just a short drive away and provides stunning landscapes, walking trails, and charming villages to explore. Meon Vale has plenty to offer including a convenience store, community centre, children's play area, primary school and a leisure centre – meaning everything you need is within easy reach.

Conveniently placed with good transport links, Meon Vale is close to the A46 and A439 providing easy access to major cities like Birmingham, Warwick, and Coventry, making commuting straightforward for work or leisure. Additionally, Stratford-upon-Avon is served by a train station, connecting Long Marston to major rail lines for further travel.



Village church

Council tax banding is not currently available. To find out more about banding please refer to the [Stratford-on-Avon District Council](#) website

**You'll notice that on most of our property listings we say that a local connection to the area is needed.**

This is because the homes for sale in these areas have been built specifically to help meet the needs of local people who would struggle to get on the housing ladder any otherwise.

The local area connection criteria varies between sites, but generally it's based on:

- Being a resident (or employed within) the area for a number of years (usually between 2 to 5)
- Family connections – for example, parent, grandparent, child, grandchild or adult sibling – who have lived in the area for at least three years.

**Priority will be given to applicants who have a connection to Stratford-on-Avon District Council.**

If you need any more information on Local Area Connection guidelines, please speak to one of our helpful Sales Consultants.

## Next steps

- Find a Bromford Shared Ownership home on our website
- Check the local area connection
- Get in touch via our website, or by calling 0800 0852 499 and we'll be happy to talk you through the next steps.
- More information at [findahome.bromford.co.uk/shared-ownership](https://findahome.bromford.co.uk/shared-ownership)

# Are you dreaming of owning your own home but think you can't afford it?

**Think again – Shared Ownership can make that dream a reality.**

Shared Ownership is a scheme that allows you to buy a share of your property, usually between 40% and 75%, and pay subsidised rent on the rest.

It's a great way to get on the property ladder and often proves to be more affordable than renting.





There are certain criteria that you need to match to be eligible for Shared Ownership. Find out more at [findahome.bromford.co.uk](https://findahome.bromford.co.uk).



# Meon Vale

Campden Road, Long Marston,  
Stratford-on-Avon, CV37 8YH



-  **The Whitley**  
2 bedroom house
-  **The Anson**  
3 bedroom house
-  **Bromford rent**
-  **St Modwens**

Artist's impression drawn from architect's plans to show the relative position of individual properties. NOT TO SCALE. This is a two dimensional drawing and will not show land contours and gradients, boundary treatments, landscaping or local authority street lighting. Please contact our sales team for more information.

**Bromford.**

# The Whitley

2 bedroom house



Computer generated artists impression only. The image shown is for illustrative purposes only. Brick and tile colour, window and door styles, elevational treatments and external landscaping may vary. Please consult our sales team.

**Bromford.**

# The Whitley

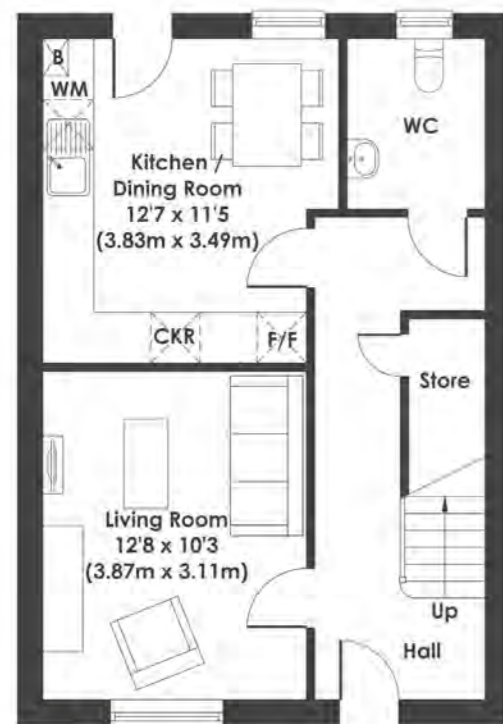
2 bedroom house

# Bromford.

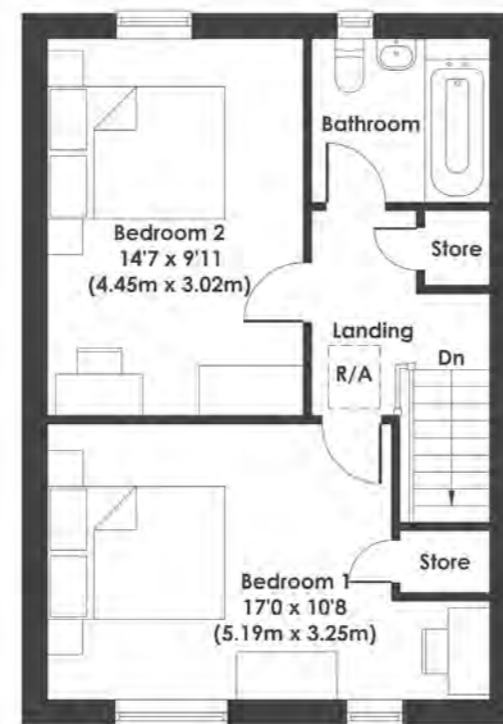
[findahome.bromford.co.uk](http://findahome.bromford.co.uk)

[sales@bromford.co.uk](mailto:sales@bromford.co.uk)

0800 0852 499



GROUND FLOOR



FIRST FLOOR

**If you're looking to take that first step on the property ladder The two bedroom Whitley could be the perfect starter home for you.**

The spacious lounge is accessed from a welcoming hallway and is the ideal place to relax at the end of the day. The heart of the home is the open-plan kitchen with ample room for dining and access to the rear garden, perfect for entertaining family and friends. A handy guest cloakroom and essential under-stairs storage cupboard complete the ground floor.

Heading upstairs you will find a light and airy master bedroom with ample storage, a second double bedroom, and a stylish bathroom. Just off the landing is more essential storage to keep your beautiful home clutter free.

Outside features driveway parking for two cars and a private turfed, rear garden complete with a paved patio area.

# The Anson

3 bedroom house



Computer generated artists impression only. The image shown is for illustrative purposes only. Brick and tile colour, window and door styles, elevational treatments and external landscaping may vary. Please consult our sales team.

**Bromford.**

# The Anson

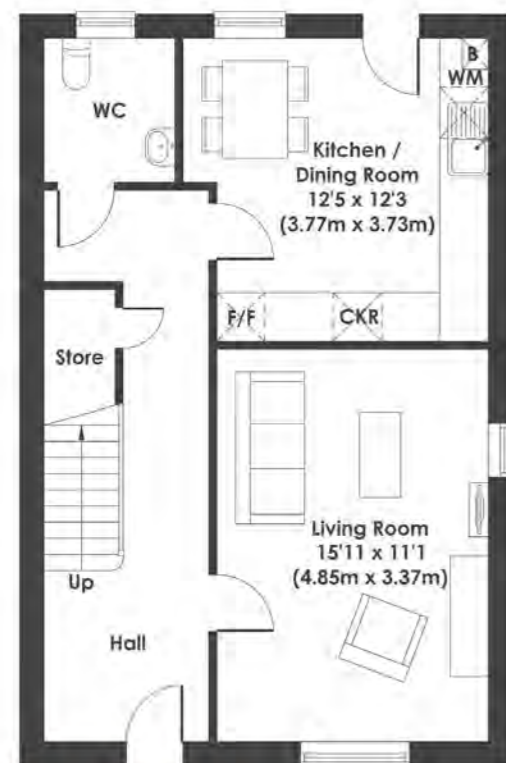
3 bedroom house

# Bromford.

[findahome.bromford.co.uk](http://findahome.bromford.co.uk)

[sales@bromford.co.uk](mailto:sales@bromford.co.uk)

0800 0852 499



GROUND FLOOR



FIRST FLOOR

## The three-bedroom Anson offers a practical layout perfect for young families and couples looking for extra space.

The spacious lounge is accessed from a welcoming hallway and is the ideal place to relax at the end of the day. The heart of the home is open-plan kitchen with ample room for dining and access to the rear garden, perfect for entertaining family and friends. A handy guest cloakroom and essential under-stairs storage cupboard complete the ground floor.

Heading upstairs you will find two double bedrooms, a stylish family bathroom and a third bedroom which could alternatively be used as a nursery or home office if you find yourself working from home more often. Just off the landing is that all-important extra-storage cupboard to keep upstairs clutter free.

Outside features driveway parking for two cars and a private turfed, rear garden complete with a paved patio area.



# So what happens next?

## Step one

Find a Bromford Shared Ownership home and **make an enquiry.**

## Step two

Check the local area connection.

## Step three

Carry out an initial affordability assessment with an independent financial advisor. You can choose one from our panel:

**The Mortgage People (TMP)**

**Mortgage Advice Bureau**

## Step four

If you are successful our sales team will be in touch with you regarding your application.

## For more information

The full process is detailed on:

[findahome.bromford.co.uk/  
shared-ownership](https://findahome.bromford.co.uk/shared-ownership)



For almost 60 years we have provided customers with new and affordable homes. We want all of our customers to thrive and believe that with the right homes and someone who believes in their potential, almost anything is possible - with Shared Ownership helping more people than ever before to realise their dreams of owning their home.



## Want to contact us?

Shannon Way,  
Ashchurch,  
Tewkesbury,  
GL20 8ND

0800 0852 499  
[sales@bromford.co.uk](mailto:sales@bromford.co.uk)  
[findahome.bromford.co.uk](http://findahome.bromford.co.uk)



# Bromford.



Bromford abides by the Consumer Protection from Unfair Trading Regulations 2008