



# Persona Homes

by Home Group

## MOWBRAY VIEW

YORKSHIRE

### Harcourt

2-bedroom house

*A great starter home for someone looking to get onto the property ladder.*

The open-plan kitchen and dining area is sure to be the heart of the home whilst the separate living room will be perfect for relaxing after a busy day. With ample storage, a handy downstairs cloakroom and a modern family bathroom, this home has a lot to offer.



**Contact us:**

**T:** 0800 030 8888

**E:** [contactus@yourpersonahome.com](mailto:contactus@yourpersonahome.com)

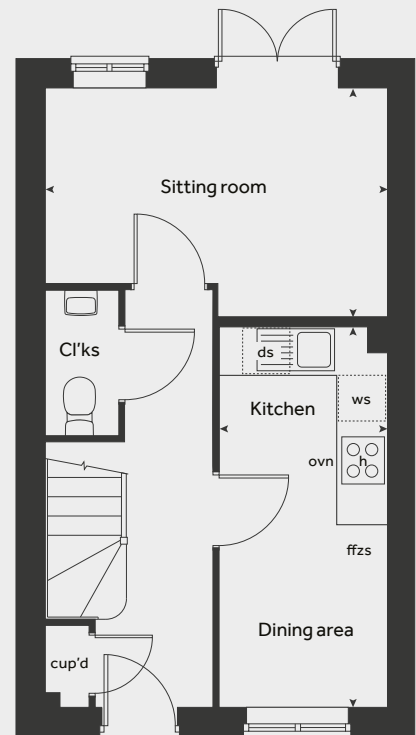
**W:** [yourpersonahome.com](http://yourpersonahome.com)

Thirsk, YO7 3SH

## Ground floor

Kitchen/dining area 4.56m x 2.10m

Living room 4.08m x 2.74m

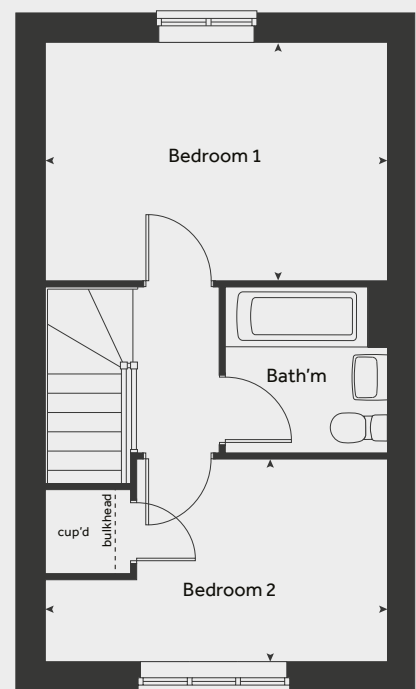


## First floor

Bedroom 1 4.08m x 2.83m

Bedroom 2 4.08m x 2.40m

Total area 82.58 m<sup>2</sup>



Any floor plans are a general outline of the layout of the property for guidance only. All measurements are approximate and may vary and any intending purchasers should not rely on them as statements of fact or representations of fact but must satisfy themselves by inspection or otherwise as to their accuracy. Dimensions shown are not intended to be relied upon for installation of appliances or items of furniture or otherwise. CGI's and images are for illustrative purposes only. Specifications are subject to change. Images are indicative only and may be of previous developments. \*Journey times and distances taken from google.com/ maps and are correct before going to print. All times and distances listed are approximate and may vary depending on time of travel.





# Persona Homes

by Home Group

## MOWBRAY VIEW

YORKSHIRE

### Mountford

3-bedroom house

*A home designed for today's modern living*

With a great open-plan kitchen and dining space that opens out onto the garden, this space will be the real heart to the home. Add to this three bedrooms, an en-suite to the main bedroom, a modern bathroom and handy downstairs cloakroom, there is enough room for the whole family.



**Contact us:**

**T:** 0800 030 8888

**E:** [contactus@yourpersonahome.com](mailto:contactus@yourpersonahome.com)

**W:** [yourpersonahome.com](http://yourpersonahome.com)

Thirsk, YO7 3SH

## Ground floor

Kitchen/dining area 5.64m x 2.69m

Living room 5.59m x 3.11m



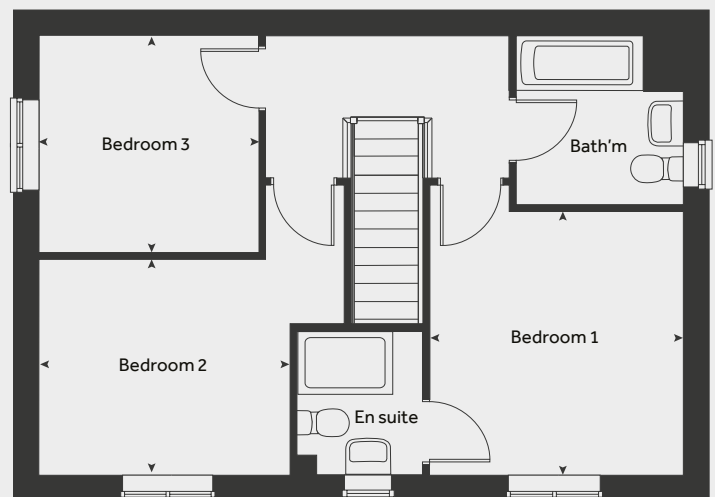
## First floor

Bedroom 1 3.35m x 3.12m

Bedroom 2 3.14m x 2.74m

Bedroom 3 2.76m x 2.76m

Total area 90.12 m<sup>2</sup>



Any floor plans are a general outline of the layout of the property for guidance only. All measurements are approximate and may vary and any intending purchasers should not rely on them as statements of fact or representations of fact but must satisfy themselves by inspection or otherwise as to their accuracy. Dimensions shown are not intended to be relied upon for installation of appliances or items of furniture or otherwise. CGI's and images are for illustrative purposes only. Specifications are subject to change. Images are indicative only and may be of previous developments. \*Journey times and distances taken from google.com/ maps and are correct before going to print. All times and distances listed are approximate and may vary depending on time of travel.



# Persona Homes

by Home Group

## MOWBRAY VIEW

YORKSHIRE

### Eveleigh

3-bedroom house

*A popular choice for families - the Eveleigh has a lot to offer*

The separate living room opens onto the garden making this a perfect place for relaxing. The kitchen/dining area is sure to be the heart of the home. Add to this an en-suite to the main bedroom, a modern family bathroom and a handy downstairs cloakroom - you can see why this home is proving to be a popular choice.



#### Contact us:

**T:** 0800 030 8888

**E:** [contactus@yourpersonahome.com](mailto:contactus@yourpersonahome.com)

**W:** [yourpersonahome.com](http://yourpersonahome.com)

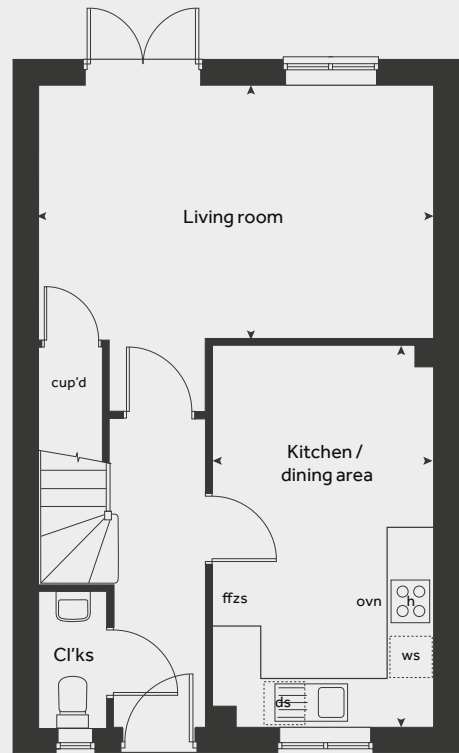
Thirsk, YO7 3SH



## Ground floor

Living room 4.98m x 3.19m

Kitchen/dining 4.82m x 2.80m



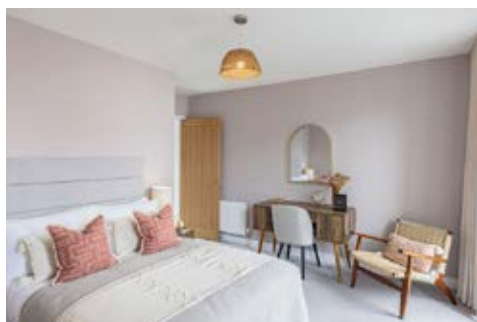
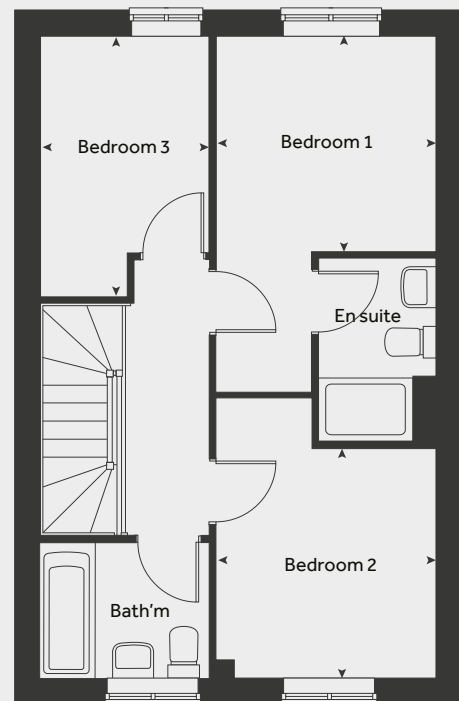
## First floor

Main bedroom 2.77m x 2.71m

Bedroom 2 2.89m x 2.77m

Bedroom 3 3.19m x 2.12m

Total area 82.58 m<sup>2</sup>



Any floor plans are a general outline of the layout of the property for guidance only. All measurements are approximate and may vary and any intending purchasers should not rely on them as statements of fact or representations of fact but must satisfy themselves by inspection or otherwise as to their accuracy. Dimensions shown are not intended to be relied upon for installation of appliances or items of furniture or otherwise. CGI's and images are for illustrative purposes only. Specifications are subject to change. Images are indicative only and may be of previous developments. \*Journey times and distances taken from google.com/ maps and are correct before going to print. All times and distances listed are approximate and may vary depending on time of travel.



# Persona Homes

by Home Group

## MOWBRAY VIEW

YORKSHIRE

### The Willow

2-bedroom house

*The Willow is a great option for those wanting to live on one floor where everything is within easy reach*

With two bedrooms, an open-plan kitchen and dining room and a separate living room, you'll have plenty of space to relax and unwind after a busy day. Add to this the modern specification throughout and extra storage, this home is a fantastic choice.



Contact us:

T: 0800 030 8888

E: [contactus@yourpersonahome.com](mailto:contactus@yourpersonahome.com)

W: [yourpersonahome.com](http://yourpersonahome.com)

Thirsk, YO7 3SH

## Ground floor

Kitchen/dining area 3.46m x 3.12m

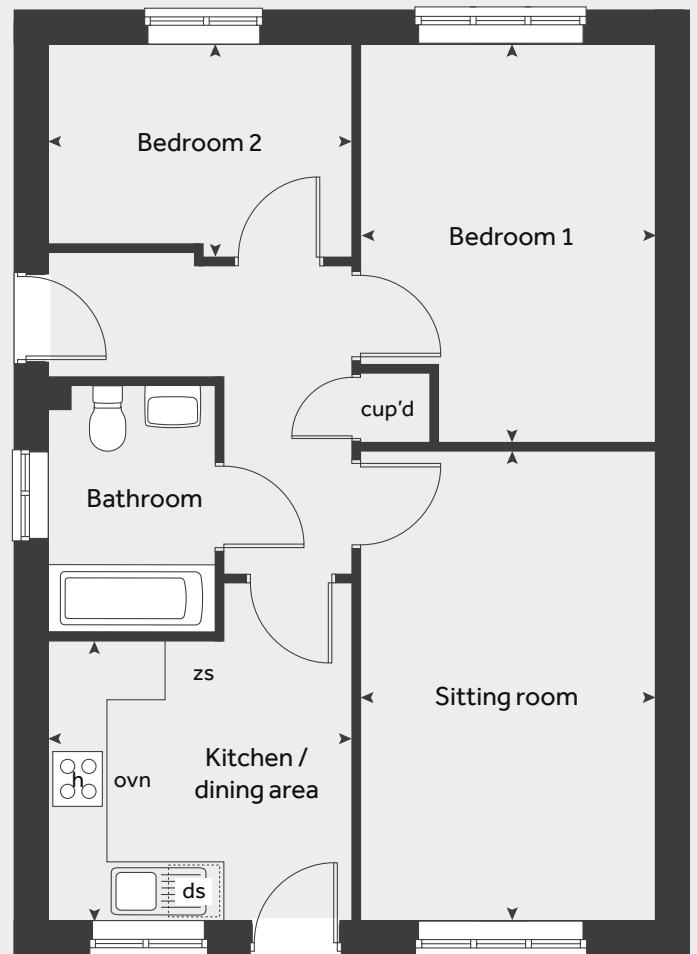
Sitting room 4.81m x 3.02m

## First floor

Bedroom 1 4.09m x 3.02m

Bedroom 2 3.12m x 2.190m

Total area 56 m<sup>2</sup>



Any floor plans are a general outline of the layout of the property for guidance only. All measurements are approximate and may vary and any intending purchasers should not rely on them as statements of fact or representations of fact but must satisfy themselves by inspection or otherwise as to their accuracy. Dimensions shown are not intended to be relied upon for installation of appliances or items of furniture or otherwise. CGI's and images are for illustrative purposes only. Specifications are subject to change. Images are indicative only and may be of previous developments. \*Journey times and distances taken from google.com/ maps and are correct before going to print. All times and distances listed are approximate and may vary depending on time of travel.