



Persona Homes

by Home Group

RIVERSIDE PLACE

CARNFORTH

Ashgate

3-bedroom house

*A lovely semi-detached home, perfect for modern family living.
With a separate living room and three great sized bedrooms, there is space for everyone.*



Contact us:

T: 0800 030 8888

E: contactus@yourpersonahome.com

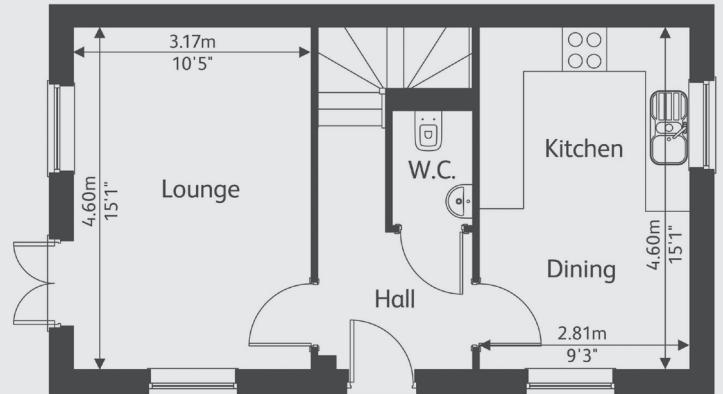
W: yourpersonahome.com

Scotland Road, Carnforth, LA5 9RE

Ground floor

Kitchen/dining 4.60m x 2.81m

Living room 4.60m x 3.17m



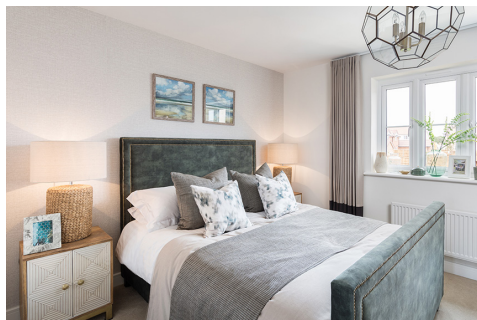
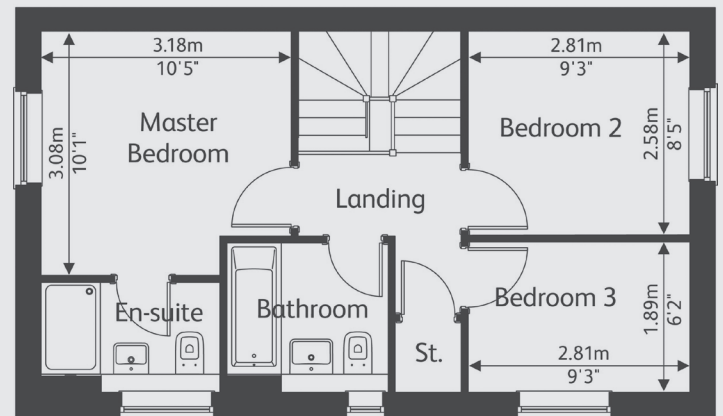
First floor

Main bedroom 3.18m x 3.08m

Bedroom 2 2.81m x 2.58m

Bedroom 3 2.81m x 1.89m

Total area 78.42 m²



Any floor plans are a general outline of the layout of the property for guidance only. All measurements are approximate and may vary and any intending purchasers should not rely on them as statements of fact or representations of fact but must satisfy themselves by inspection or otherwise as to their accuracy. Dimensions shown are not intended to be relied upon for installation of appliances or items of furniture or otherwise. CGI's and images are for illustrative purposes only. Specifications are subject to change. Images are indicative only and may be of previous developments. *Journey times and distances taken from google.com/ maps and are correct before going to print. All times and distances listed are approximate and may vary depending on time of travel.



Persona Homes

by Home Group

RIVERSIDE PLACE

CARNFORTH

Ashgate II

3-bedroom house

A lovely semi-detached home, perfect for modern family living. With a separate living room and three great sized bedrooms, there is space for everyone.



Contact us:

T: 0800 030 8888

E: contactus@yourpersonahome.com

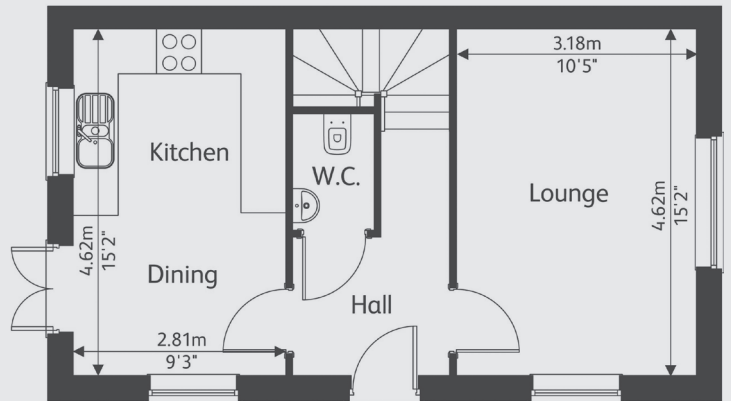
W: yourpersonahome.com

Scotland Road, Carnforth, LA5 9RE

Ground floor

Kitchen/dining 4.60m x 2.81m

Living room 4.60m x 3.17m



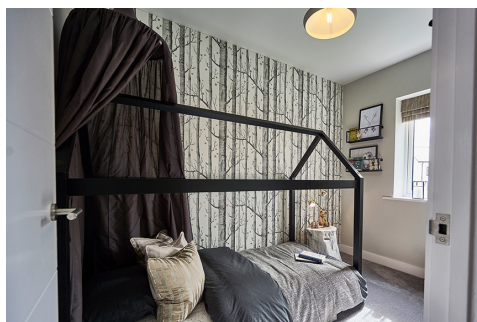
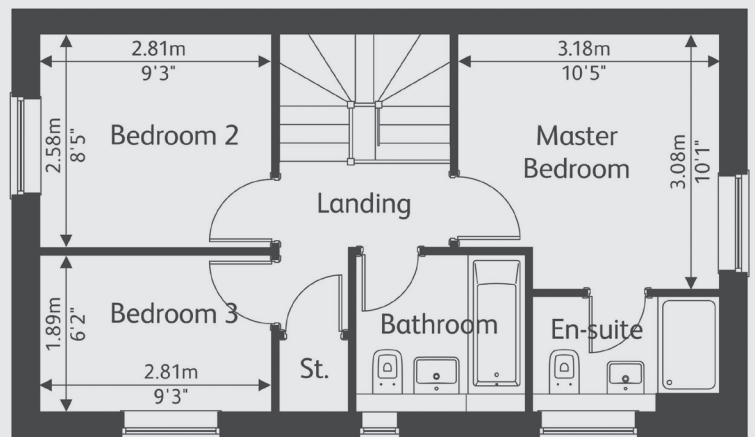
First floor

Main bedroom 3.17m x 3.08m

Bedroom 2 2.81m x 2.57m

Bedroom 3 2.81m x 1.89m

Total area 78.42 m²



Any floor plans are a general outline of the layout of the property for guidance only. All measurements are approximate and may vary and any intending purchasers should not rely on them as statements of fact or representations of fact but must satisfy themselves by inspection or otherwise as to their accuracy. Dimensions shown are not intended to be relied upon for installation of appliances or items of furniture or otherwise. CGI's and images are for illustrative purposes only. Specifications are subject to change. Images are indicative only and may be of previous developments. *Journey times and distances taken from google.com/ maps and are correct before going to print. All times and distances listed are approximate and may vary depending on time of travel.



Persona Homes

by Home Group

RIVERSIDE PLACE

CARNFORTH

Burlington

3-bedroom house

A three-bedroom home with lots to offer. The kitchen/dining area opens out onto the garden making this a great space for gathering. The main bedroom has an en-suite and there is a handy cloakroom too!



Contact us:

T: 0800 030 8888

E: contactus@yourpersonahome.com

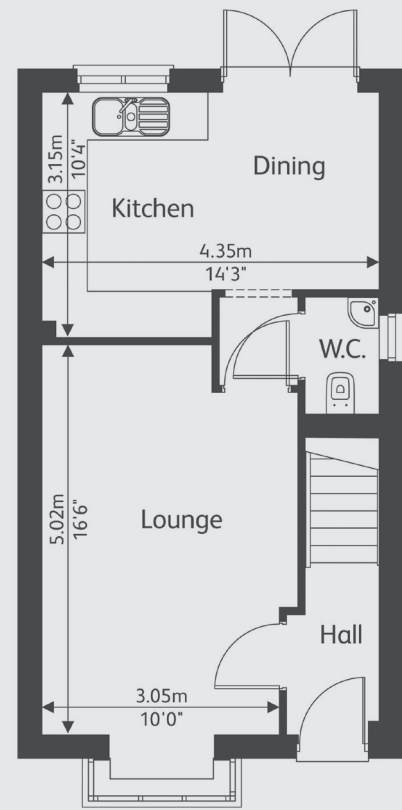
W: yourpersonahome.com

Scotland Road, Carnforth, LA5 9RE

Ground floor

Kitchen/dining 4.35m x 3.15m

Living room 5.02m x 3.05m



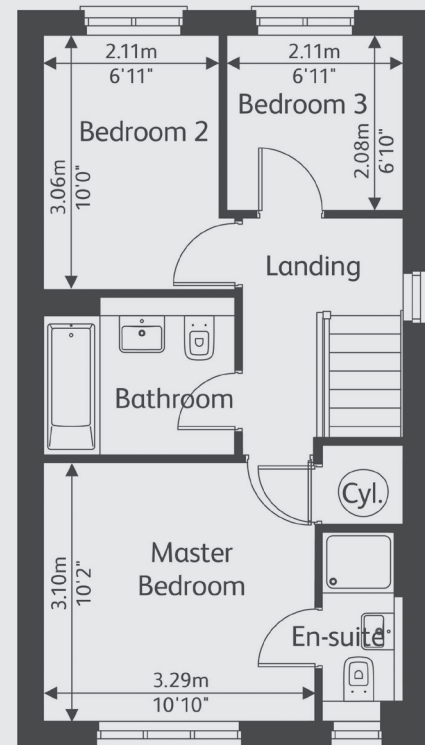
First floor

Main bedroom 3.29m x 3.10m

Bedroom 2 3.05m x 2.11m

Bedroom 3 2.11m x 2.08m

Total area 75.12 m²



Any floor plans are a general outline of the layout of the property for guidance only. All measurements are approximate and may vary and any intending purchasers should not rely on them as statements of fact or representations of fact but must satisfy themselves by inspection or otherwise as to their accuracy. Dimensions shown are not intended to be relied upon for installation of appliances or items of furniture or otherwise. CGI's and images are for illustrative purposes only. Specifications are subject to change. Images are indicative only and may be of previous developments. *Journey times and distances taken from google.com/ maps and are correct before going to print. All times and distances listed are approximate and may vary depending on time of travel.



Persona Homes

by Home Group

RIVERSIDE PLACE

CARNFORTH

Gladstone

3-bedroom house

A smart choice for stepping onto the property ladder, this three-bedroom home has a lot to offer. The living/dining area opens onto the turfed and fenced rear garden and is perfect for relaxing or entertaining.



Contact us:

T: 0800 030 8888

E: contactus@yourpersonahome.com

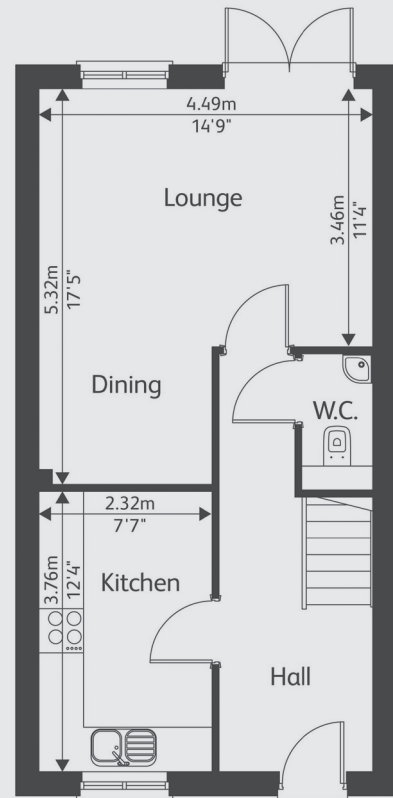
W: yourpersonahome.com

Scotland Road, Carnforth, LA5 9RE

Ground floor

Kitchen/dining 3.76m x 2.32m

Living room 5.32m x 4.49m



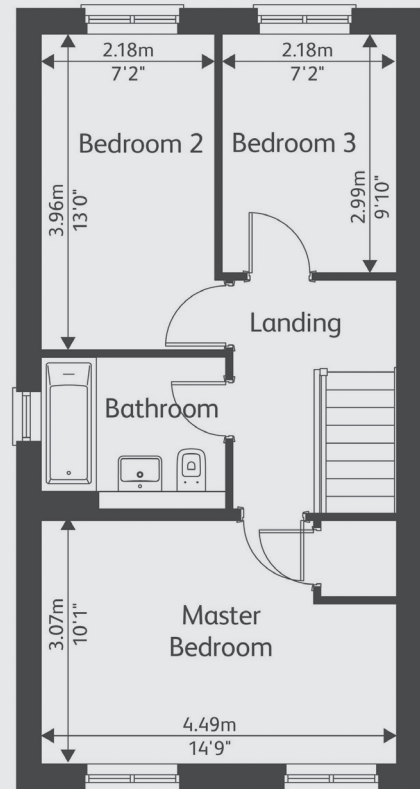
First floor

Main bedroom 4.49m x 3.07m

Bedroom 2 3.96m x 2.18m

Bedroom 3 2.99m x 2.18m

Total area 84.82 m²



Any floor plans are a general outline of the layout of the property for guidance only. All measurements are approximate and may vary and any intending purchasers should not rely on them as statements of fact or representations of fact but must satisfy themselves by inspection or otherwise as to their accuracy. Dimensions shown are not intended to be relied upon for installation of appliances or items of furniture or otherwise. CGI's and images are for illustrative purposes only. Specifications are subject to change. Images are indicative only and may be of previous developments. *Journey times and distances taken from google.com/ maps and are correct before going to print. All times and distances listed are approximate and may vary depending on time of travel.