

Welcome to Badbury Park

Swindon, Wiltshire, SN3 6FD

A collection of two bedroom
Shared Ownership homes.



bromfordhomes.co.uk/badburypark

On your doorstep

Designed and built by 5* Builders Redrow Homes, our 2-bedroom Shared Ownership homes at Badbury Park offer contemporary layouts perfect for modern living. Located within easy reach of both the M4 and Swindon town centre, Badbury Park offers a blend of town centre convenience and countryside charm.



**Swindon
Designer Outlet**
5.2 miles



**Swindon train
station**
4.4 miles



**M4
junction 15**
1.9 miles

Local area connection

To meet the needs of local people most of our homes for sale require a local connection to the area. The connection criteria varies between sites, but generally it's based on:

- Being a resident (or employed within) the area for a number of years (usually between 2 to 5)
- Family connections – for example, parent, grandparent, child, grandchild or adult sibling – who have lived in the area for at least three years.

Priority will be given to applicants who have a connection to Swindon.

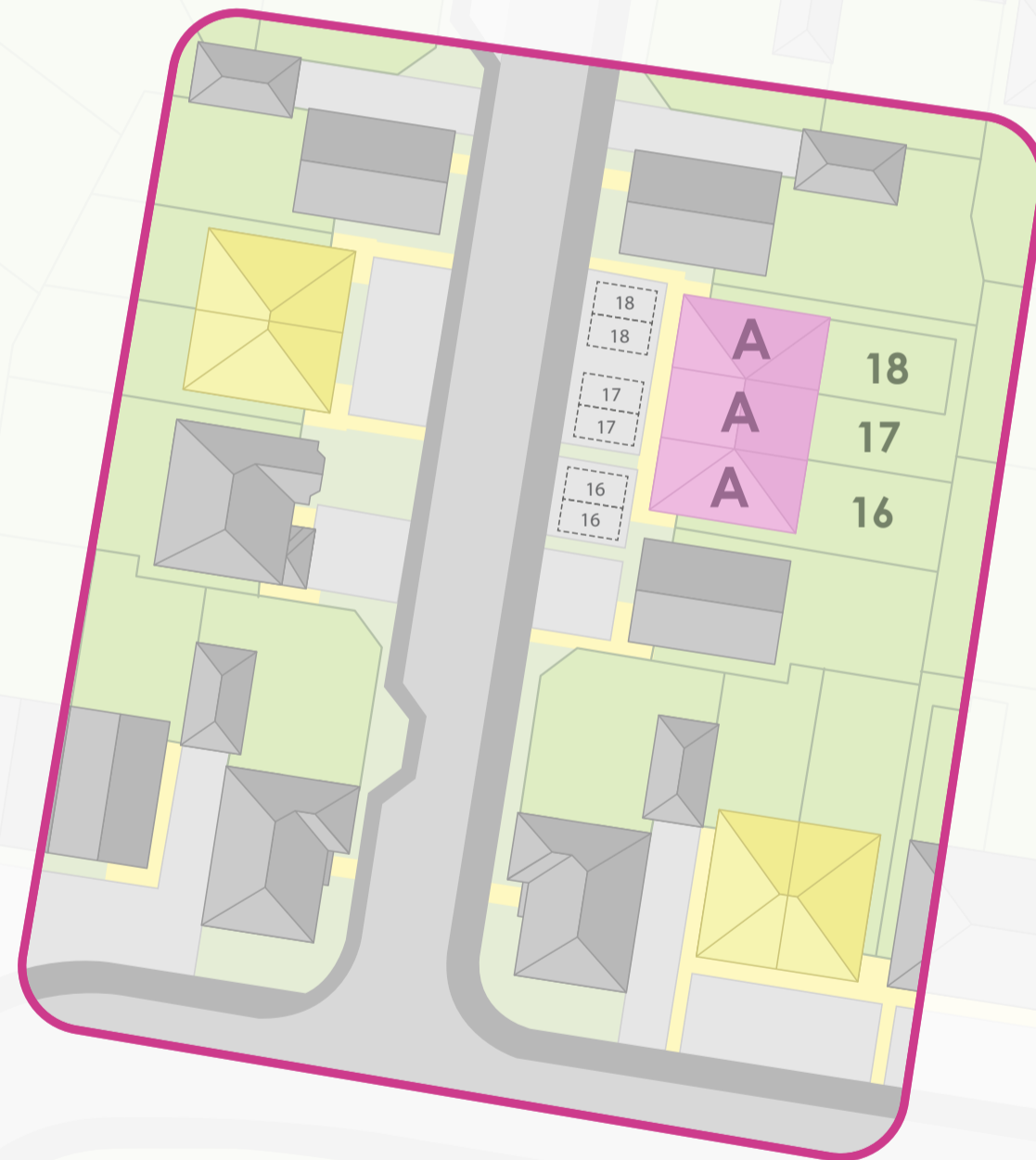
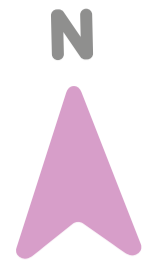
If you need any more information, please speak to one of our helpful Sales Consultants.

Bromford
Shared Ownership

Badbury Park

Swindon, SN3 6FD

-  **The Avon**
2 bedroom homes
-  **Bromford**
rented homes
-  **Redrow Homes**



Future
development by
Redrow Homes

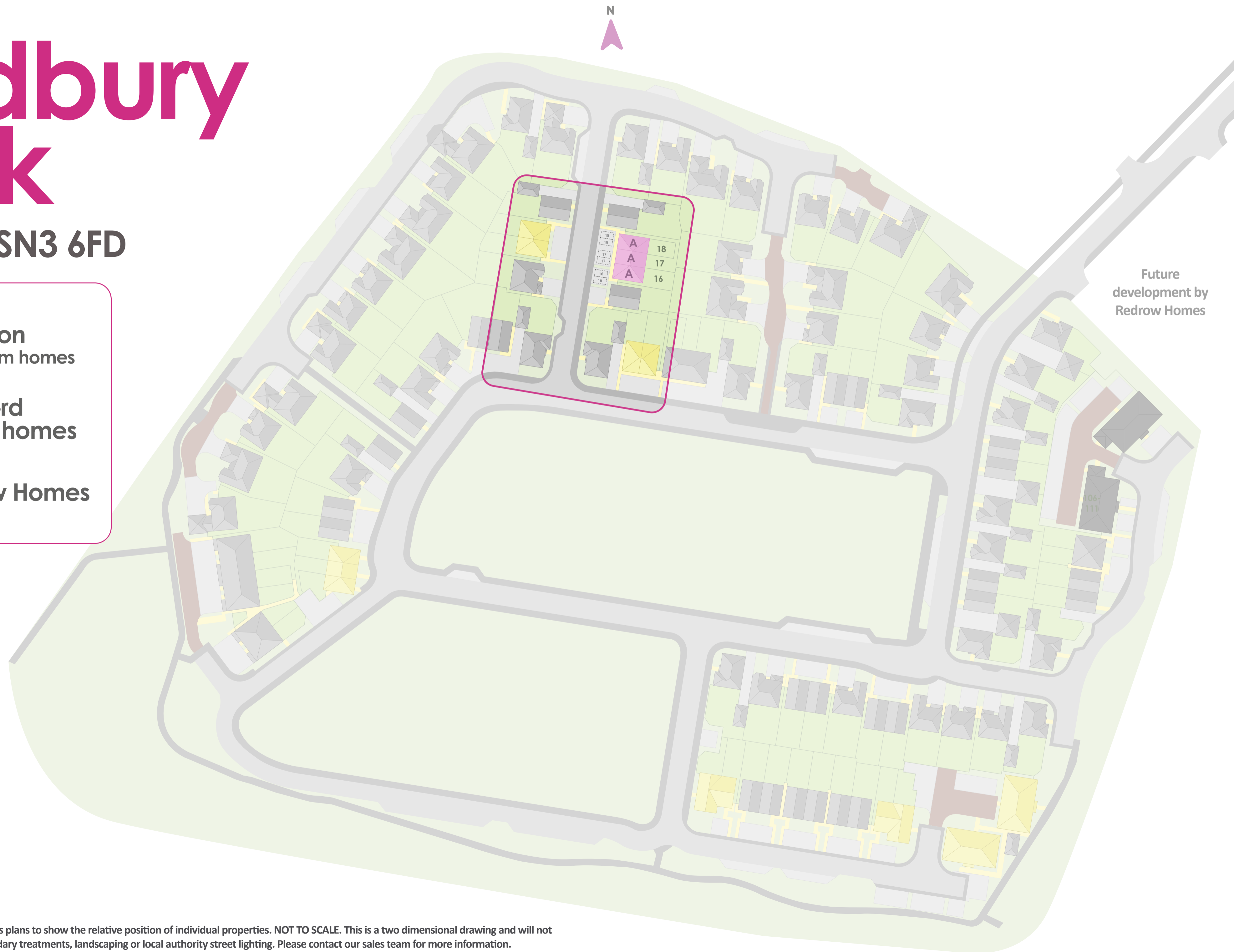
Badbury Park

Swindon, SN3 6FD

A The Avon
2 bedroom homes

Bromford
rented homes

Redrow Homes

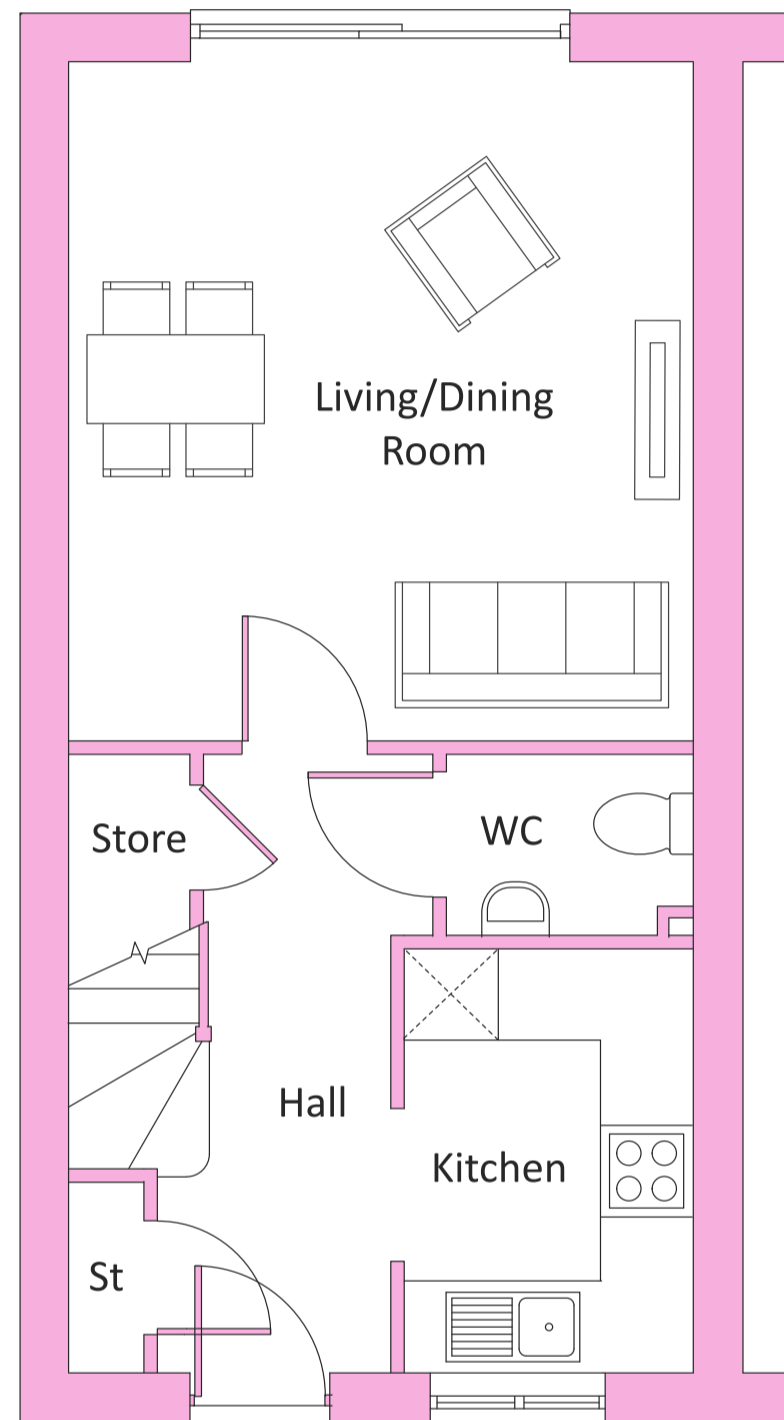


Artist's impression drawn from architect's plans to show the relative position of individual properties. NOT TO SCALE. This is a two dimensional drawing and will not show land contours and gradients, boundary treatments, landscaping or local authority street lighting. Please contact our sales team for more information.

Plot: 16, 17 & 18

The Avon

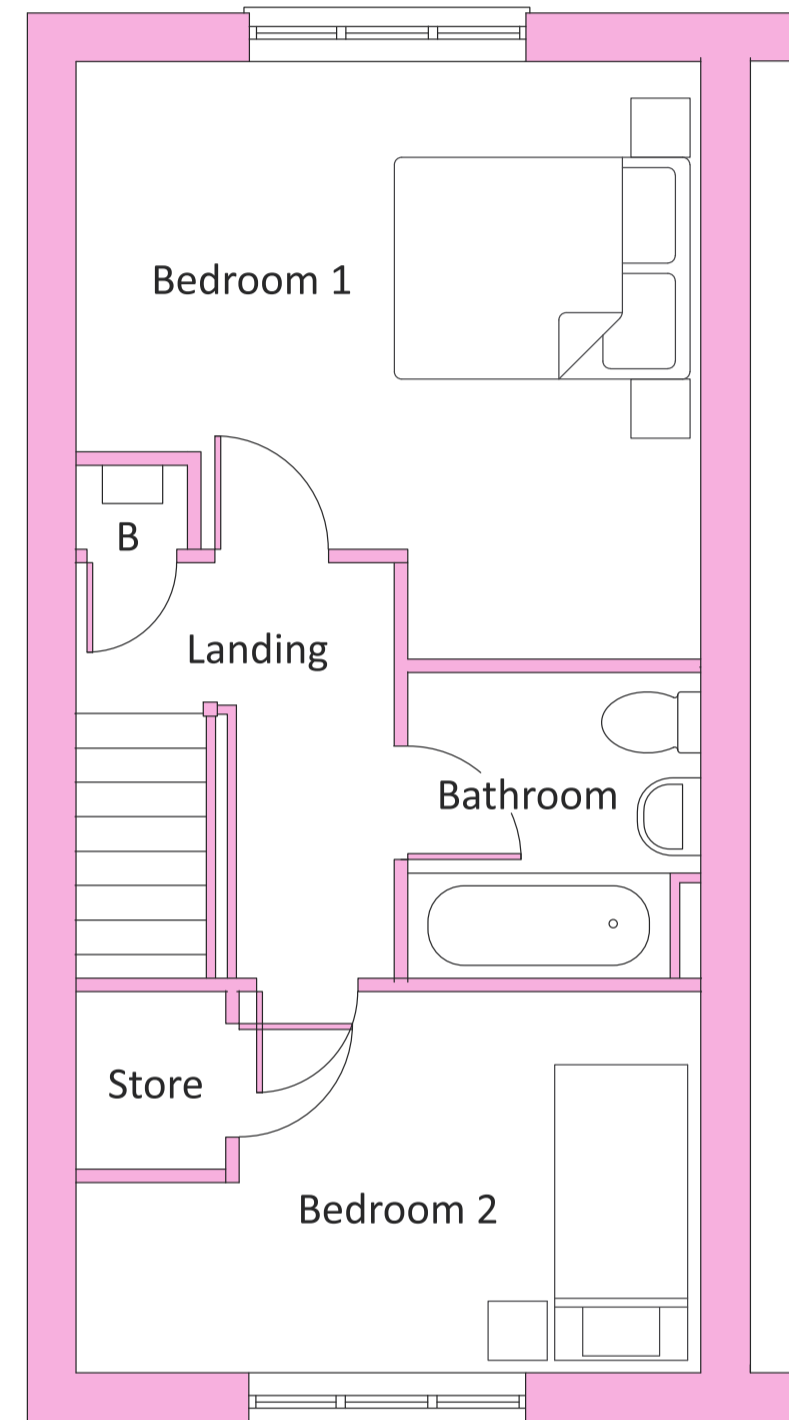
2 bedroom home



Ground floor

Kitchen/dining room
4.66m x 3.03m / 15'4" x 9'11"

Living room
4.66m x 3.20m / 15'4" x 10'6"



First floor

Bedroom 1
4.66m x 2.96m / 15'4" x 9'9"

Bedroom 2
4.10m x 2.84m / 13'5" x 9'4"



2 bedrooms



Energy efficient



Turf to rear garden



10 Year NHBC warranty



- Open-plan living/dining room
- Fully fitted integrated kitchen
- Sliding patio doors leading to private rear garden
- Guest cloakroom
- Under-stair storage
- Private turfed rear garden
- Allocated parking



Who are we?

Since 1963 we have been providing customers with new and affordable homes. We want all of our customers to thrive and believe that with the right homes and someone who believes in their potential, almost anything is possible - with Bromford Shared Ownership we're helping more people than ever before to realise their dreams of owning their home.

Where does my money go when I buy a Bromford home? As a registered charity through the FCA registered societies, all the money Bromford makes goes back into the communities we work in and helps the people we work with thrive for a better safer life.



Shannon Way,
Ashchurch,
Tewkesbury,
GL20 8ND

0800 0852 499
sales@bromford.co.uk
bromfordhomes.co.uk



Bromford abides by the Consumer Protection from
Unfair Trading Regulations 2008

Bromford.

Shared Ownership