

VIVID AT

THE COURSE

BASINGSTOKE, HAMPSHIRE

HOW IT WORKS

We're all about helping people to find their perfect place...

- 1 Apply online for the The Course development by following the link: yourvividhome.co.uk/developments/the-course
- 2 We'll check if you're eligible and meet the initial affordability criteria for your chosen home, which can take a few weeks when we're busy.
- 3 One of our Sales Officers will get in touch to let you know the outcome and your next steps. If you meet the initial checks, we'll ask you to speak to our panel financial advisors* (even if you're a potential cash buyer). Please note VIVID are not a credit broker. Then you'll need to send us some more documents like proof of your deposit and a mortgage AIP (Agreement in Principle).
- 4 You'll also complete a form to tell us which plots you're interested in.
- 5 We'll check all the information you've sent us and let you know if we're able to offer you a new home. We'll tell you as quickly as we can, sometimes this can take a few weeks as each development will have different criteria to decide who gets the homes.

*There are many financial advisors you could use to understand and apply for a Shared Ownership mortgage on your behalf. Every financial advisor has a duty to find you a mortgage that is best for you. They'll keep in mind VIVID's timescales for any mortgage that is offered to you to make sure it meets our sales timescales. We are signposting you to our panel advisors that do not charge you a fee for advice. If you choose to use another financial advisor that is absolutely fine and your choice. This will not impact any decision on whether you buy a home from VIVID.

Example VIVID showhome from a previous development



VIVID

TRUST VIVID

Always got a prompt response to my emails. I was kept informed throughout the process. Lovely staff.

Kara - Shared Owner

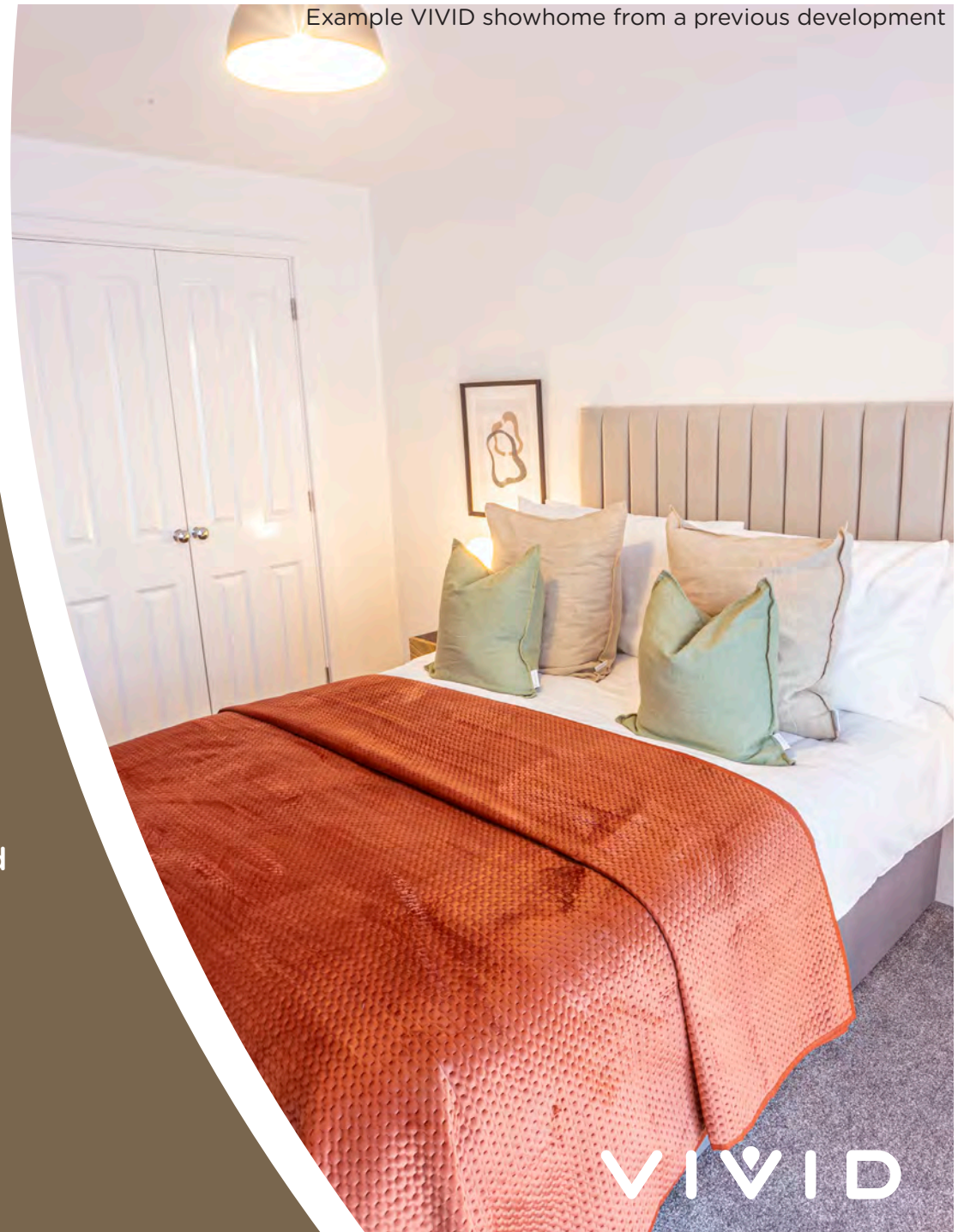
The service from start to finish was amazing. Fantastic communication, things happened when they said they would and the whole process was so easy.

Nicola - Shared Owner

VIVID have been outstanding from the very beginning of my application - they professionally supported me through the whole process explained every step and made me feel part of the VIVID family, I can't stress how amazing all the VIVID team have been - thank you.

Susan - Shared Owner

Example VIVID showhome from a previous development



VIVID

THE DEVELOPMENT

Brand new 2 bedroom apartments available in Basingstoke!

Our new home are in the Kempshott area of Basingstoke. They can be found just off Winchester road, in close proximity to the town centre, just around 10 minutes' drive.

This popular local community has a good choice of schools and is well placed for commuters. There's really good access to major road networks such as the M3, and trains from Basingstoke to London Waterloo only take 47 minutes. Kempshott community has a choice of supermarkets including Sainsbury's, Lidl and useful stores such as B&M and Pets at Home as well as a few smaller shops and two pubs.

Local photography of Basingstoke

VIVID

THE LOCATION

Basingstoke is a popular town which boasts a variety of amenities for your leisure

Basingstoke town centre is just 5 miles away and this is a town where old meets new, culturally there is an eclectic mix of museums, art galleries and theatres and a varied choice of restaurants. In the heart of the old town, you'll find the market square which is steeped in history. The more modern part of the town offers a two-storey shopping centre, Festival Place.

There's a great choice of Ofsted-rated Good and Outstanding schools within a three-mile radius. For outdoor enthusiasts, VIVID On The Green is close to the countryside and the Wessex Downs is within easy reach too.



Local photography of Basingstoke

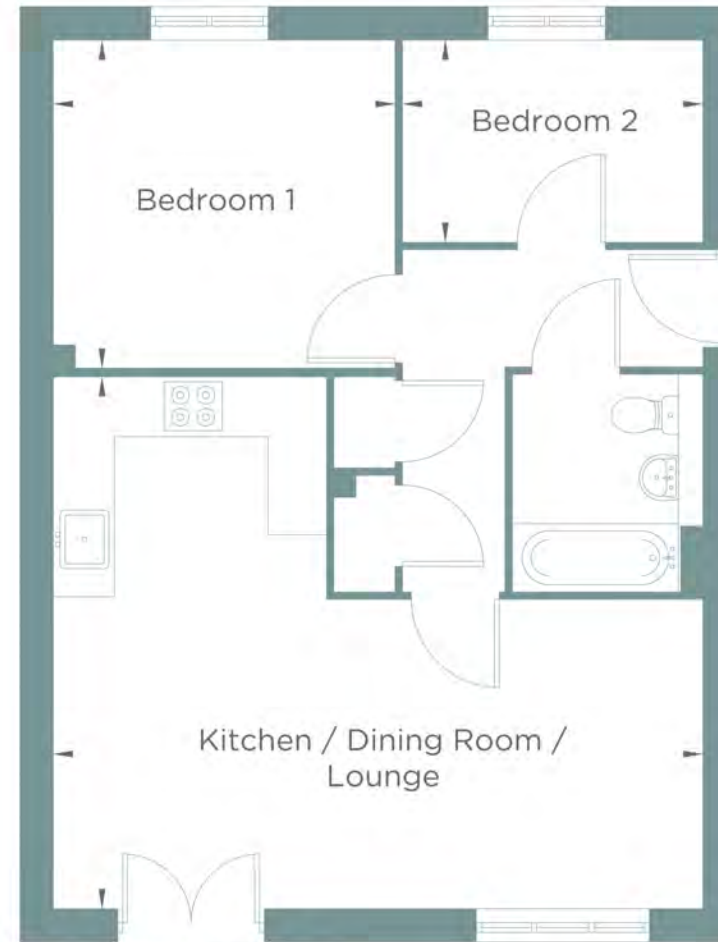
VIVID

The Course

Plot 413
2 BEDROOM APARTMENT

SECOND FLOOR

Kitchen / Dining Room / Lounge	6.65m x 5.42m (21'-10" x 17'-9")
Bedroom 1	3.50m x 3.34m (11'-6" x 10'-1")
Bedroom 2	3.07m x 2.06m (10'-1" x 6'-9")



SECOND FLOOR

Please note floorplans are not to scale and are indicative only. Total areas are provided as gross internal areas and are subject to variance and these plans do not act as part of a legally binding contract, warranty or guarantee. These plans may not be to scale and dimensions may vary during the build programme. It is common for fixtures and fittings to change during the build programme, for example boilers. Location of windows, doors, kitchen units and appliances may differ. Doors may swing in to the opposite direction to that shown on selected houses. Dimensions which are taken from the indicated points of measurement are for guidance only and are not intended to be used to calculate the space needed for specific pieces of furniture. If your home is set within a terrace row, the position of the windows may vary from those shown on this plan. The property may also be a handed (mirrored) version of the layout shown here. We advise that you do not order any furniture based on these indicative plans, please wait until you can measure up fully, inside the property. Please speak to a member of our sales team about when you can gain access to take measurements. We will not be responsible for costs incurred due to ordering incorrect furniture. VIVID Housing Limited is registered in England and Wales as a registered society under the Co-operative and Community Benefit Societies Act 2014 under number 7544 with exempt charity status and as a registered provider of social housing with the Homes and Communities Agency under number 4850. Our registered office is at Peninsular House, Wharf Road, Portsmouth, Hampshire, PO2 8HB. All information correct at time of creation - January 2024.

VIVID

The Course

Plots 413, 414
2 BEDROOM APARTMENTS



SECOND FLOOR

Please note floorplans are not to scale and are indicative only. Total areas are provided as gross internal areas and are subject to variance and these plans do not act as part of a legally binding contract, warranty or guarantee. These plans may not be to scale and dimensions may vary during the build programme. It is common for fixtures and fittings to change during the build programme, for example boilers. Location of windows, doors, kitchen units and appliances may differ. Doors may swing in to the opposite direction to that shown on selected houses. Dimensions, which are taken from the indicated points of measurement, are for guidance only and are not intended to be used to calculate the space needed for specific pieces of furniture. If your home is set within a terrace row, the position of the windows may vary from those shown on this plan. The property may also be a handed (mirrored) version of the layout shown here. We advise that you do not order any furniture based on these indicative plans, please wait until you can measure up fully, inside the property. Please speak to a member of our sales team about when you can gain access to take measurements. We will not be responsible for costs incurred due to ordering incorrect furniture. VIVID Housing Limited is registered in England and Wales as a registered society under the Co-operative and Community Benefit Societies Act 2014 under number 7544 with exempt charity status and as a registered provider of social housing with the Homes and Communities Agency under number 4850. Our registered office is at Peninsular House, Wharf Road, Portsmouth, Hampshire, PO2 8HB. All information correct at time of creation - January 2024.

VIVID

The Course

Plots 409 to 414
2 BEDROOM APARTMENTS



FRONT ELEVATION



REAR ELEVATION



SIDE ELEVATION



SIDE ELEVATION

Please note floorplans are not to scale and are indicative only, total areas are provided as gross internal areas and are subject to variance and these plans do not act as part of a legally binding contract, warranty or guarantee. These plans may not be to scale and dimensions may vary during the build programme. It is common for fixtures and fittings to change during the build programme, for example boilers. Location of windows, doors, kitchen units and appliances may differ. Doors may swing in to the opposite direction to that shown on selected houses. Dimensions, which are taken from the indicated points of measurement are for guidance only and are not intended to be used to calculate the space needed for specific pieces of furniture. If your home is set within a terrace row, the position of the windows may vary from those shown on this plan. The property may also be a handed (mirrored) version of the layout shown here. We advise that you do not order any furniture based on these indicative plans, please wait until you can measure up fully, inside the property. Please speak to a member of our sales team about when you can gain access to take measurements. We will not be responsible for costs incurred due to ordering incorrect furniture. VIVID Housing Limited is registered in England and Wales as a registered society under the Co-operative and Community Benefit Societies Act 2014 under number 7544 with exempt charity status and as a registered provider of social housing with the Homes and Communities Agency under number 4850. Our registered office is at Peninsular House, Wharf Road, Portsmouth, Hampshire, PO2 8HB. All information correct at time of creation - January 2024.

VIVID

The Course



Please note floorplans are not to scale and are indicative only, total areas are provided as gross internal areas and are subject to variance and these plans do not act as part of a legally binding contract, warranty or guarantee. These plans may not be to scale and dimensions may vary during the build programme. It is common for fixtures and fittings to change during the build programme, for example boilers. Location of windows, doors, kitchen units and appliances may differ. Doors may swing in to the opposite direction to that shown on selected houses. Dimensions, which are taken from the indicated points of measurement are for guidance only and are not intended to be used to calculate the space needed for specific pieces of furniture. If your home is set within a terrace row, the position of the windows may vary from those shown on this plan. The property may also be a handed (mirrored) version of the layout shown here. We advise that you do not order any furniture based on these indicative plans, please wait until you can measure up fully, inside the property. Please speak to a member of our sales team about when you can gain access to take measurements. We will not be responsible for costs incurred due to ordering incorrect furniture. VIVID Housing Limited is registered in England and Wales as a registered society under the Co-operative and Community Benefit Societies Act 2014 under number 7564 with exempt charity status and as a registered provider of social housing with the Homes and Communities Agency under number 1650. Our registered office is at Peninsular House, Wharf Road, Portsmouth, Hampshire, PO2 8HB. All information correct at time of creation - January 2024.

VIVID

The Course



Please note floorplans are not to scale and are indicative only, total areas are provided as gross internal areas and are subject to variance and these plans do not act as part of a legally binding contract, warranty or guarantee. These plans may not be to scale and dimensions may vary during the build programme. It is common for fixtures and fittings to change during the build programme, for example boilers. Location of windows, doors, kitchen units and appliances may differ. Doors may swing in to the opposite direction to that shown on selected houses. Dimensions which are taken from the indicated points of measurement are for guidance only and are not intended to be used to calculate the space needed for specific pieces of furniture. If your home is set within a terrace row, the position of the windows may vary from those shown on this plan. The property may also be a handed (mirrored) version of the layout shown here. We advise that you do not order any furniture based on these indicative plans, please wait until you can measure up fully, inside the property. Please speak to a member of our sales team about when you can gain access to take measurements. We will not be responsible for costs incurred due to ordering incorrect furniture. Vivid Housing Limited is registered in England and Wales as a registered society under the Co-operative and Community Benefit Societies Act 2014 under number 7564 with exempt charity status and as a registered provider of social housing with the Homes and Communities Agency under number 1650. Our registered office is at Peninsula House, Wharf Road, Portsmouth, Hampshire, PO2 8HB. All information correct at time of creation - January 2024.

VIVID

SPECIFICATION

Kitchen:

- Plaza Porcelain coloured kitchen cabinets
- Pastel oak style worktops with HPK643 handles

Other Internals:

- Vinyl in wet areas is Sintra 507
- Carpet in non-wet areas is Supreme Twist B217R
- Tiling is Porcelanosa Japan Blanco

Generally, our homes are:

- Decorated in a neutral style
- Carpet in non-wet areas
- Vinyl in wet areas
- Oven, hob and hood
- Shower over bath
- Parking

Images shown are indicative and do not represent the final specification. VIVID reserves the right to change items in the specification dependent on availability, at any moment, and without prior notice during the build completion.



VIVID

WHO WE ARE

We're a customer-focused provider of affordable homes and the 4th largest builder amongst UK housing associations. We have an ambitious development programme, together with providing vital support services to our communities.

BUYING MORE SHARES

Shared Ownership enables you to buy more shares in your home over time, from an additional 10% to outright purchase (in most cases). We call this staircasing.

AFTER YOU MOVE IN

You can have confidence buying a VIVID home as our team are here to help you if you have any unforeseen issues or defects in your new home



SO HOW CAN YOU ENJOY
ALL THIS FOR JUST £63,750?*

ONLY WITH VIVID SHARED OWNERSHIP

Shared ownership lets you buy a share of your new home. You can start at just 25% with a 5% deposit. You pay rent on the rest. If you buy a 25% share on one of these homes you can expect the rent to be around £438.28 per month*. In the future, as your financial situation changes, you can buy greater shares if you want to. This is called staircasing. As your share goes up, your rent comes down. If you'd like to get a better understanding of how much buying a brand new home at The Course would cost you.

Visit www.yourvividhome.co.uk to see all of our homes on offer with Shared Ownership!

*Prices are based on buying a 25% share in a 2 bedroom apartment with a FMV of £255,000, shares start from £63,750 with a monthly rent of example of £438.28 (Based on unsold equity at 2.75% of value). Terms and conditions apply.



VIVID

NOW IT'S TIME TO APPLY

yourvividhome.co.uk/developments/the-course

VIVID

VIVID Housing Limited is registered in England and Wales as a registered society under the Co-operative and Community Benefit Societies Act 2014 under number 7544 with exempt charity status and as a registered provider of social housing with the Homes and Communities Agency under number 4850. Our registered office is at Peninsular House, Wharf Road, Portsmouth, Hampshire, PO2 8HB. All information correct at time of creation – June 2024.



VIVID @ The Course

Basingstoke, RG23 7ST

Shared Ownership homes

Property type	Plot	Address	100% value*	Eg: FROM minimum 25% share (which you must raise mortgage & deposit for)	Eg: Initial monthly rent pcm FROM (based on 75% share you don't own)	Estimated monthly Service Charge	Projected handover date*	Lease Length	Council Tax Band	Important Information
2 Bedroom Flat	413	5 Hawkins House, 10 Albatross Way, Basingstoke, Hampshire RG23 7ST	£255,000	£63,750	£438.28	£97.86	June 2024	990 Years	TBC	Energy Info Key Info



Please note the following:

Eligibility conditions apply.

Open to applicants from all locations however only applicants who live/work/close family in the Basingstoke Council area will have priority and can be assessed currently.

The 25% example above shows the **minimum** share available. Applicants will be means tested to confirm the share they purchase and are required to purchase the maximum affordable % .

Initial rent is calculated at 2.75%

Successful applicants will have a maximum of 28 days ** to exchange contracts following VIVID's solicitor issuing the contract pack. You must then complete on the purchase within a maximum 5 days of either exchange of contracts or following handover from the developer.

*Prices & projected handover dates are for guidance only and are subject to change. Our newbuild Shared Ownership homes are valued by a RICS (Royal Institute Chartered Surveyor) surveyor which confirms the full market value for 3 months. Every 3 months we will have the homes revalued, to make sure they're in line with the current market. This means the price is non-negotiable. It also means the value of the homes could go up or down, so are subject to change.

If purchasing a property off-plan Handover dates are only projected and subject to change. Vivid will inform you of any changes to projected handover dates as and when received by the developer. Please note that we are not able to give you detailed information to the reasons for any extended delays due to confidentiality agreements within the contracts between vivid and the developer.

By agreeing to reserve a property off-plan Vivid will not be responsible for any fees that you may incur due to delays in property completions.

** or if all legal paperwork and the mortgage offer is in you must complete the sale.