

The Orchards at Purton

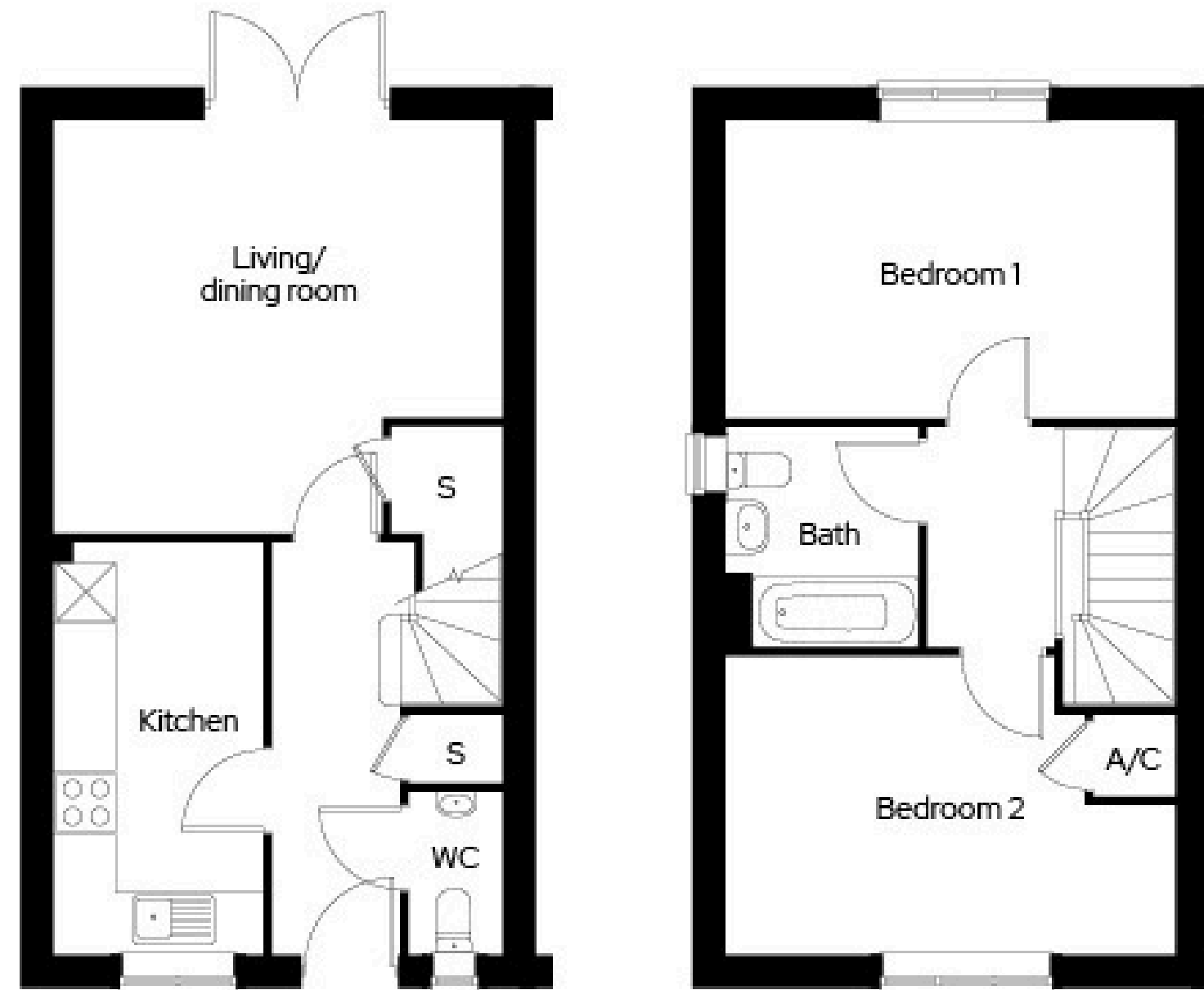


The Orchards at Purton The Bellflower

2 bedroom end terraced
Plot 6, 8*

2  1  2 

Room	
Kitchen	2.2m x 4.3m
Living/dining room	4.7m x 4.3m
Bedroom 1	4.7m x 3.1m
Bedroom 2	4.7m x 3.1m



* Mirrored plot A/C Airing cupboard S Storage

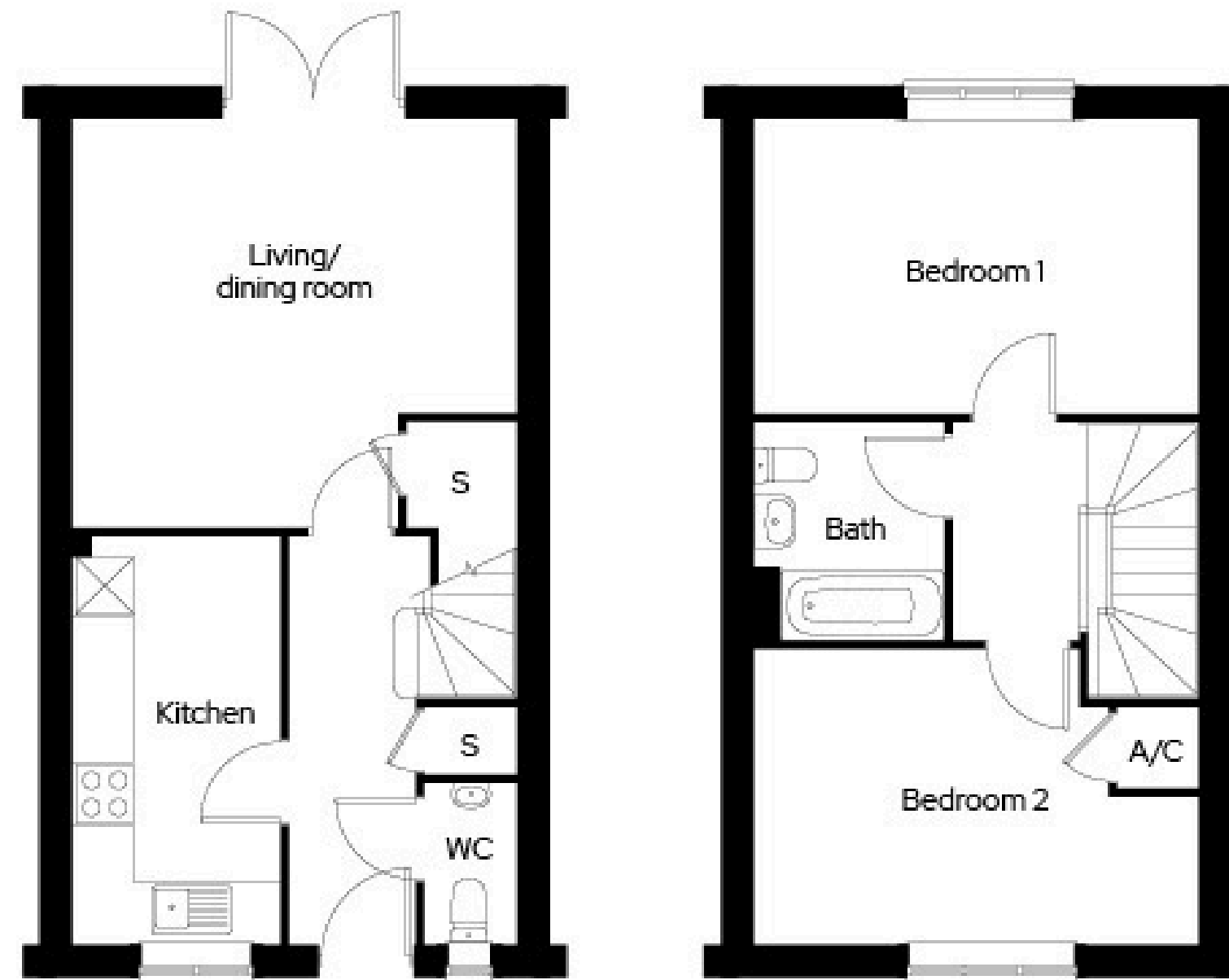
Dimensions provided are for general guidance and are not intended to be used for carpet sizes, appliances, spaces or items of furniture. All dimensions are maximum.

The Orchards at Purton The Bellflower

2 bedroom mid terraced
Plot 7

2 🏠 1 🚿 2 🚗

Room	
Kitchen	2.2m x 4.3m
Living/dining room	4.7m x 4.3m
Bedroom 1	4.7m x 3.1m
Bedroom 2	4.7m x 3.1m



A/C Airing cupboard S Storage

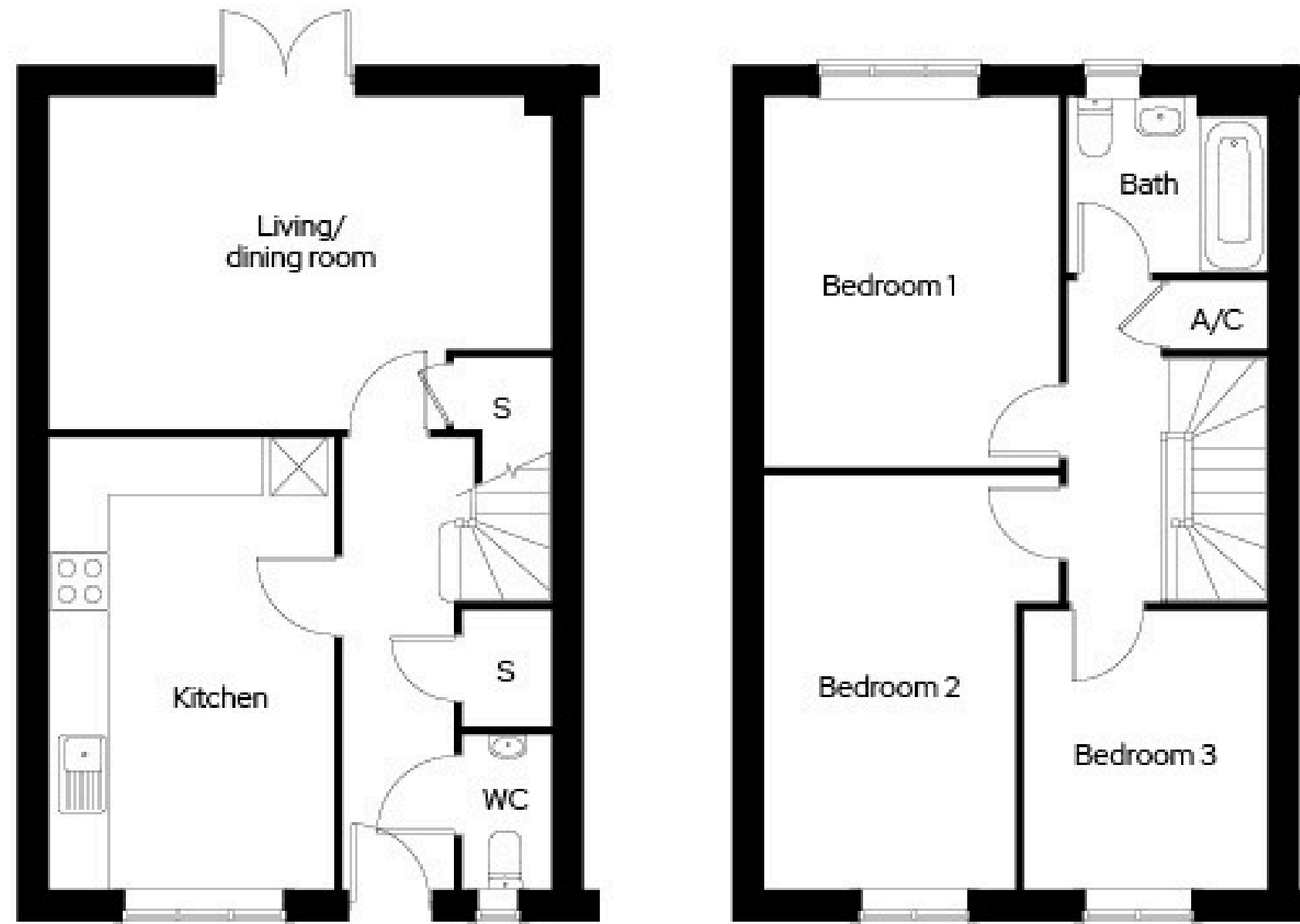
Dimensions provided are for general guidance and are not intended to be used for carpet sizes, appliances, spaces or items of furniture. All dimensions are maximum.

The Orchards at Purton The Clover

3 bedroom semi-detached
Plot 13, 14*, 15, 16*

3 🏠 1 ♿ 2 🚗

Room	
Kitchen	3.1m x 4.9m
Living/dining room	5.5m x 3.6m
Bedroom 1	3.2m x 4.0m
Bedroom 2	3.2m x 4.5m
Bedroom 3	2.7m x 3.0m



* Mirrored plot A/C Airing cupboard S Storage

Dimensions provided are for general guidance and are not intended to be used for carpet sizes, appliances, spaces or items of furniture. All dimensions are maximum.

The Orchards at Purton Site plan



-  **The Bellflower**
2 bedroom mid/end terraced
-  **The Clover**
3 bedroom semi-detached
-  **Parking spaces**
-  **EV** **Electric vehicle charging point**

Site layout and landscaping is indicative only and subject to change.

