

# Welcome to Redwing Rise

Hednesford, Cannock, WS12 0AA

A collection of 2 and 3 bedroom  
Shared Ownership homes.



[bromfordhomes.co.uk/redwingrise](https://bromfordhomes.co.uk/redwingrise)

## On your doorstep

Redwing Rise is our latest collection of two and three bedroom Shared Ownership homes. Set in the bustling town of Hednesford, in the Cannock Chase district of Staffordshire, with its picturesque surroundings and proximity to beautiful Cannock Chase, it offers a desirable mix of urban convenience and natural beauty.



**Designer outlet  
West Midlands**  
3.0 miles



**M6  
junction 11**  
6.2 miles



**Hednesford  
train station**  
1.4 miles

Distances taken from Google Maps via walking or driving at date of publishing.

### Local area connection

To meet the needs of local people most of our homes for sale require a local connection to the area. The connection criteria varies between sites, but generally it's based on:

- Being a resident (or employed within) the area for a number of years (usually between 2 to 5)
- Family connections – for example, parent, grandparent, child, grandchild or adult sibling – who have lived in the area for at least three years

**Priority will be given to applicants who have a connection to Cannock Chase Council**

If you need any more information, please speak to one of our helpful Sales Consultants.

We follow Homes England Guidelines on First Come, First Served policies for Shared Ownership homes. Please visit [our policies page](#) for full policy details

**Bromford**  
Shared Ownership

# Redwing Rise

Rawnsley Road, Rawnsley,  
Cannock, WS12 0AA

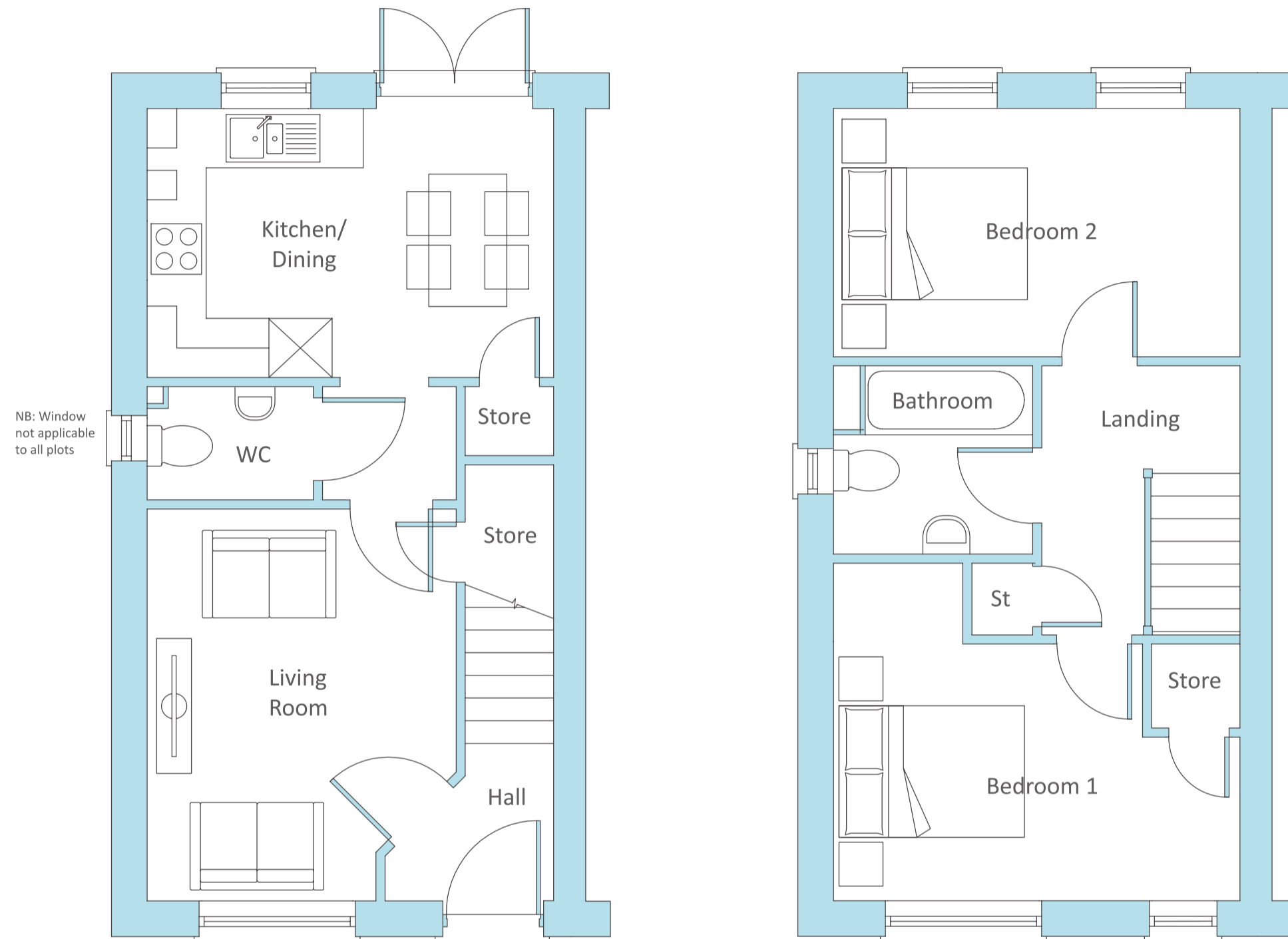


- Sw** The Swallow  
2 bedroom home
- W** The Woodpecker  
2 bedroom home
- Sold**
- Bromford**  
Rented homes

Plots: 1, 2, 3, 4, 6, & 7

# The Swallow

## 2 bedroom home



### Ground floor

#### Kitchen/Dining

2.72m x 4.13m / 8'11" x 13'6"

#### Living Room

3.97m x 2.31m / 12'11" x 7'6" (min)  
3.97m x 3.07m / 12'11" x 10'1" (max)





### First floor

#### Bedroom 1

3.42m x 4.13m / 11'2" x 13'6"

#### Bedroom 2

2.51m x 4.23m / 8'2" x 13'10"

-  2 bedrooms
-  Energy efficient
-  Turf to rear garden
-  10 Year NHBC warranty



- Energy-efficient two-bedroom home
- Open-plan kitchen with dining area
- French doors to rear garden
- Guest cloakroom
- Plenty of storage
- Two double bedrooms
- Driveway parking
- Turfed rear garden

Plot: 5

# The Woodpecker

## 2 bedroom home



### Ground floor

#### Kitchen / dining room

2.8m x 4.63m / 9'2" x 15'2"

#### Living room

3.02m x 4.63m / 9'11" x 15'2"

### First floor

#### Bedroom 1

3.03m x 4.63m / 9'10" x 15'2"

#### Bedroom 2

2.8m x 4.63m / 9'2" x 15'2"



2 bedrooms



Energy efficient



Turf to rear garden



10 Year NHBC warranty



- Energy-efficient two-bedroom home
- Open-plan kitchen with dining area
- Generous sized lounge
- Guest cloakroom
- Handy storage cupboard
- Main bedroom with built-in wardrobes
- Allocated parking
- Turfed rear garden



## Who are we?

Since 1963 we have been providing customers with new and affordable homes. We want all of our customers to thrive and believe that with the right homes and someone who believes in their potential, almost anything is possible - with Bromford Shared Ownership we're helping more people than ever before to realise their dreams of owning their home.

Where does my money go when I buy a Bromford home? As a registered charity through the FCA registered societies, all the money Bromford makes goes back into the communities we work in and helps the people we work with thrive for a better safer life.



Shannon Way,  
Ashchurch,  
Tewkesbury,  
GL20 8ND

0800 0852 499  
sales@bromford.co.uk  
bromfordhomes.co.uk



Bromford abides by the Consumer Protection from  
Unfair Trading Regulations 2008

# Bromford.

Shared Ownership