

Welcome to Berwick Green

Cribbs Causeway, Bristol, BS10 7TG

A collection of 2 bedroom Shared
Ownership homes.



bromfordhomes.co.uk/berwickgreen

On your doorstep

Designed and built by Taylor Wimpey, Berwick Green in Cribbs Causeway offers a stunning collection of apartments, and Shared Ownership homes. Located just 7.4 miles from Bristol City Centre, this family-friendly community offers a mix of vibrant living with a countryside lifestyle nearby, whilst benefitting from the convenience of local amenities.



**Bristol
City Centre**
7.4 miles



**Bristol Parkway
station**
5 miles



**Bristol Zoo
Project**
1.2 miles

Local area connection

To meet the needs of local people most of our homes for sale require a local connection to the area. The connection criteria varies between sites, but generally it's based on:

- Being a resident (or employed within) the area for a number of years (usually between 2 to 5)
- Family connections – for example, parent, grandparent, child, grandchild or adult sibling – who have lived in the area for at least three years

Priority will be given to applicants who have a connection to South Gloucestershire.

If you need any more information, please speak to one of our helpful Sales Consultants.

We follow Homes England Guidelines on First Come, First Served policies for Shared Ownership homes. Please visit [our policies page](#) for full policy details

Bromford.
Shared Ownership

Berwick Green

Cribbs Causeway, Bristol, BS10 7TG

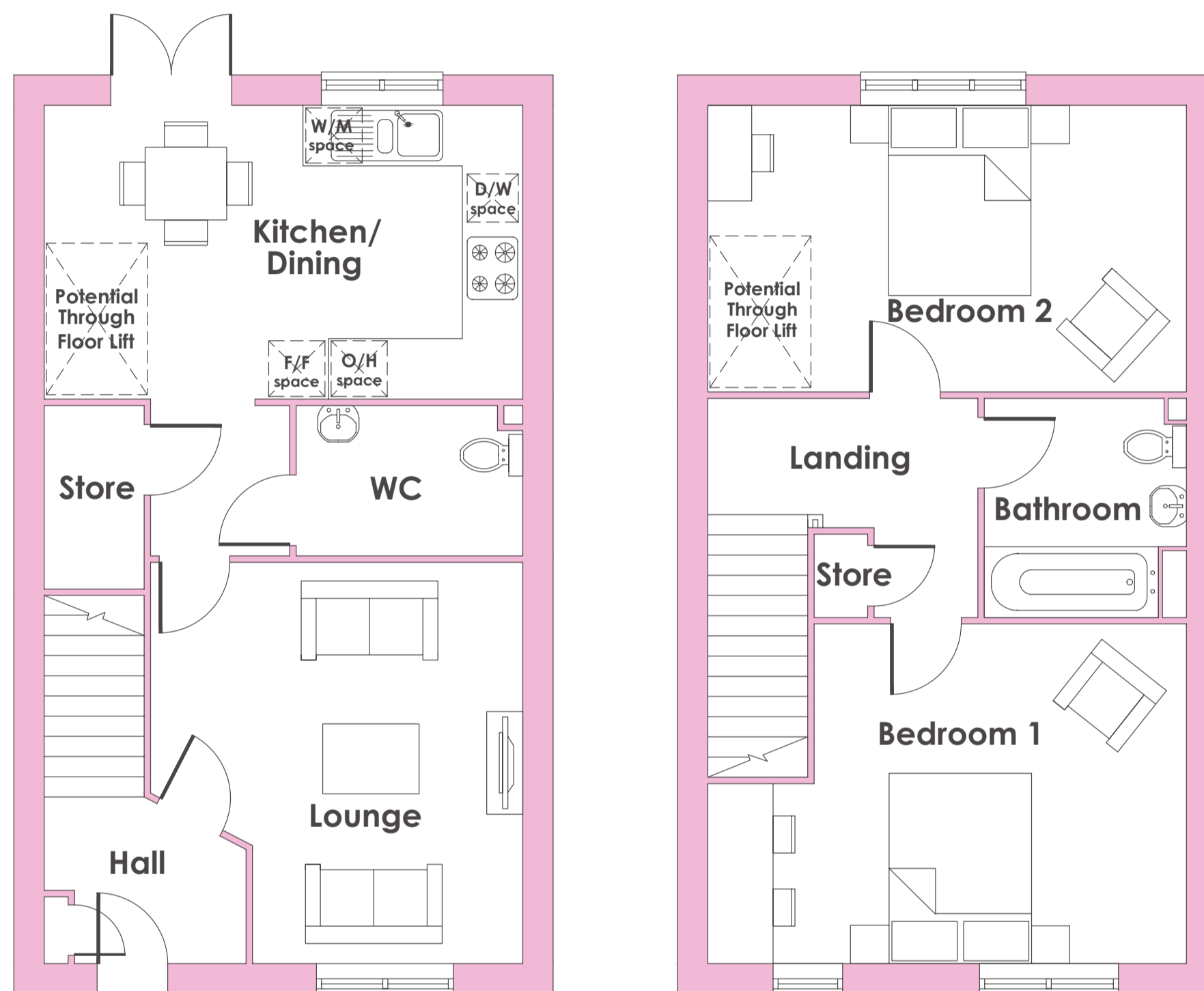
- B** The Blandford
2 bed home
- Bromford
rented homes
- Taylor
Wimpey



Plots: 36 & 37

The Blandford

2 bedroom home



Ground floor

Kitchen / Dining

4.74m x 2.91m / 15'7" x 9'7"

Lounge

3.97m x 3.69m / 13'0" x 12'1"

First floor

Bedroom 1

4.74m x 3.36m / 15'7" x 11'1"

Bedroom 2

4.74m x 2.84m / 15'7" x 9'4"



2 bedrooms



Energy efficient



Turf to rear garden



10 Year NHBC warranty



- Energy efficient two bedroom home
- Open-plan kitchen-diner
- Integrated oven, hob and extractor hood
- French doors to rear garden
- Guest cloakroom



Who are we?

Since 1963 we have been providing customers with new and affordable homes. We want all of our customers to thrive and believe that with the right homes and someone who believes in their potential, almost anything is possible - with Bromford Shared Ownership we're helping more people than ever before to realise their dreams of owning their home.

Where does my money go when I buy a Bromford home? As a registered charity through the FCA registered societies, all the money Bromford makes goes back into the communities we work in and helps the people we work with thrive for a better safer life.



Shannon Way,
Ashchurch,
Tewkesbury,
GL20 8ND

0800 0852 499
sales@bromford.co.uk
bromfordhomes.co.uk



Follow us on TikTok

Visit the Home Ownership Hub to find out more about your new home
bromfordhomes.co.uk/home-ownership-hub



Bromford abides by the Consumer Protection from Unfair Trading Regulations 2008

Bromford.
Shared Ownership