



Persona Homes

by Home Group

BAILDON

SHERBURN IN ELMET

3-bedroom house

*Looking for a home that has space for you to grow into?
The Baildon could be the home for you!*

Spread across three floors, the Baildon is a beautifully designed property with spacious living areas downstairs. With three generous bedrooms, a family bathroom and an en-suite to the main bedroom we can see why this home has proven to be popular!



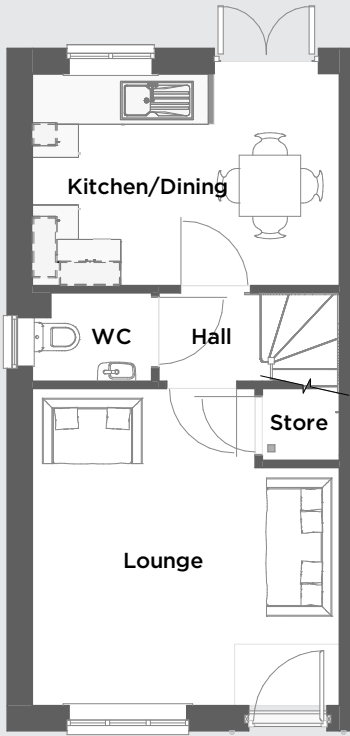
Contact us:

T: 0800 030 8888

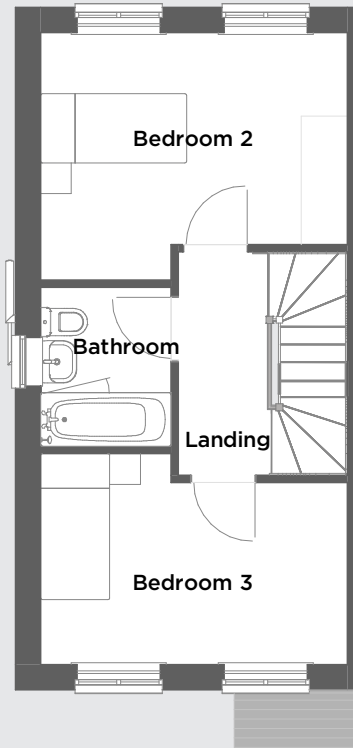
E: contactus@yourpersonahome.com

W: yourpersonahome.com

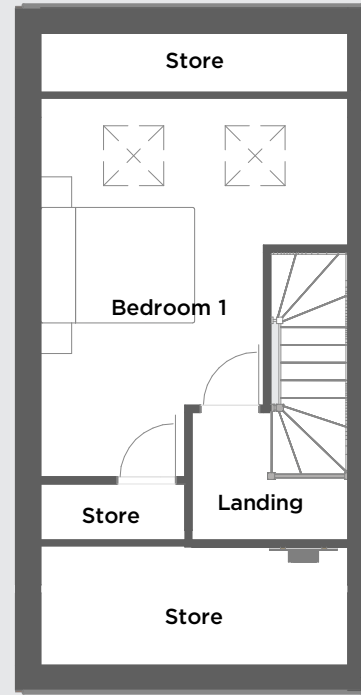
Sherburn in Elmet, Leeds LS25 6DP



Ground floor



First floor



Second floor

Ground floor

Kitchen/dining area	3.99m x 2.76m
Lounge	3.99m x 4.13m
WC	1.56m x 1.15m
Store	1.01m x 0.94m

Second floor

Bedroom 1	3.99m x 4.09m
Total area	86.1 m²

First floor

Bedroom 1	3.99m x 3.22m
Bedroom 2	3.99m x 2.74m
Bathroom	1.70m x 2.07m



Any floor plans are a general outline of the layout of the property for guidance only. All measurements are approximate and may vary and any intending purchasers should not rely on them as statements of fact or representations of fact but must satisfy themselves by inspection or otherwise as to their accuracy. Dimensions shown are not intended to be relied upon for installation of appliances or items of furniture or otherwise. CGI's and images are for illustrative purposes only. Specifications are subject to change. Images are indicative only and may be of previous developments. *Journey times and distances taken from google.com/ maps and are correct before going to print. All times and distances listed are approximate and may vary depending on time of travel.



Persona Homes

by Home Group

HOWARTH

SHERBURN IN ELMET

2-bedroom house

A home designed for today's modern family living.

The Howarth is a lovely townhouse and is spread across three floors. Thoughtfully designed, this home is bright and airy. The open-plan kitchen/dining/living room is sure to be the home's heart, whilst everyone upstairs will have space to relax and unwind.



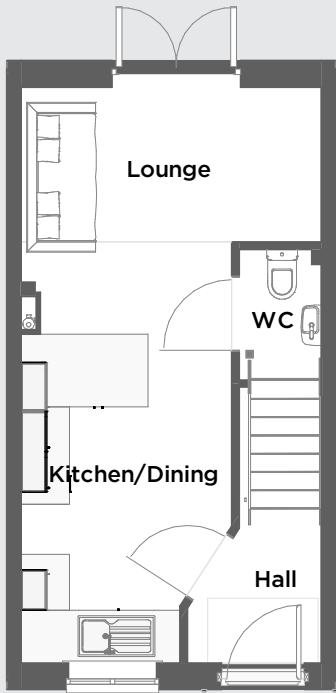
Contact us:

T: 0800 030 8888

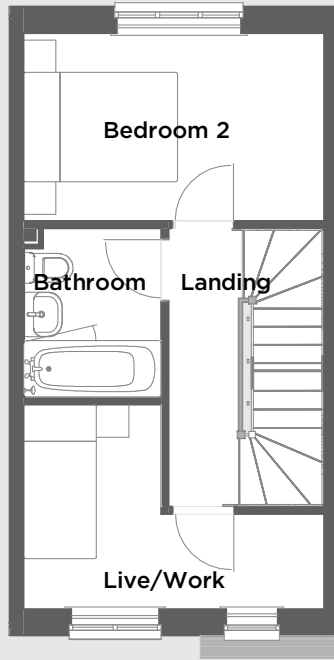
E: contactus@yourpersonahome.com

W: yourpersonahome.com

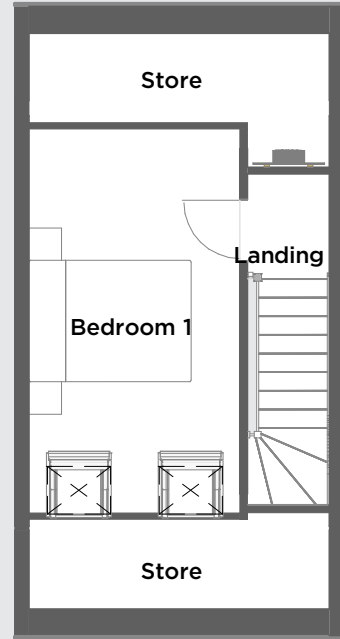
Sherburn in Elmet, Leeds LS25 6DP



Ground floor



First floor



Second floor

Ground floor

Lobby	1.63m x 1.91m
Kitchen/dining area	2.60m x 3.9m
Lounge	3.71m x 3.16m
WC	1.01m x 1.61m

Second floor

Bedroom 1	2.6m x 4.74m
Total area	68.8 m²

First floor

Bedroom 2	3.71m x 2.32m
Live/Work	1.70m x 2.52m
Bathroom	1.7m x 2.08m



Any floor plans are a general outline of the layout of the property for guidance only. All measurements are approximate and may vary and any intending purchasers should not rely on them as statements of fact or representations of fact but must satisfy themselves by inspection or otherwise as to their accuracy. Dimensions shown are not intended to be relied upon for installation of appliances or items of furniture or otherwise. CGI's and images are for illustrative purposes only. Specifications are subject to change. Images are indicative only and may be of previous developments. *Journey times and distances taken from google.com/ maps and are correct before going to print. All times and distances listed are approximate and may vary depending on time of travel.



Persona Homes

by Home Group

RIPLEY

SHERBURN IN ELMET

2-bedroom house

A great starter home, the Ripley comes with more than you would expect for a two-bedroom house.

The open-plan kitchen and dining area opens onto the garden making this a perfect place for indoor/outdoor living. With a home office, a modern family bathroom and lots of storage throughout, the Ripley offers more than you'd expect.



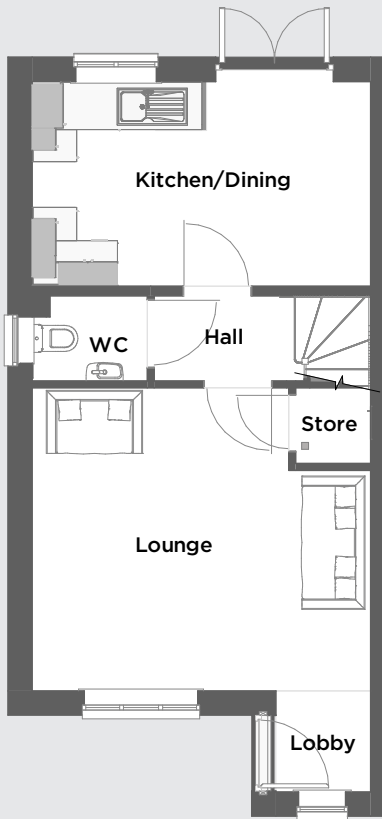
Contact us:

T: 0800 030 8888

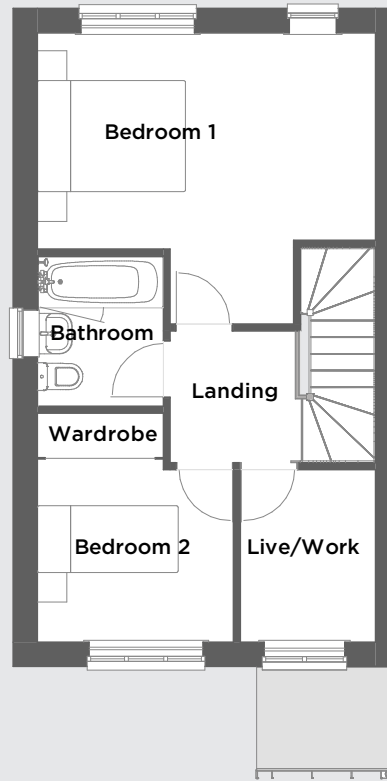
E: contactus@yourpersonahome.com

W: yourpersonahome.com

Sherburn in Elmet, Leeds LS25 6DP



Ground floor



First floor

Ground floor

Lobby	1.28m x 1.36m
Kitchen/dining area	4.57m x 2.76m
Lounge	4.57m x 4.09m
WC	1.55m x 1.15m

First floor

Bedroom 1	4.57m x 2.77m
Bedroom 2	2.61m x 3.13m
Live/Work	1.86m x 2.36m
Bathroom	1.7m x 2.15m
Total area	76.8 m²



Any floor plans are a general outline of the layout of the property for guidance only. All measurements are approximate and may vary and any intending purchasers should not rely on them as statements of fact or representations of fact but must satisfy themselves by inspection or otherwise as to their accuracy. Dimensions shown are not intended to be relied upon for installation of appliances or items of furniture or otherwise. CGI's and images are for illustrative purposes only. Specifications are subject to change. Images are indicative only and may be of previous developments. *Journey times and distances taken from google.com/ maps and are correct before going to print. All times and distances listed are approximate and may vary depending on time of travel.