

Welcome to Perrybrook

Brockworth, Gloucester, GL3 4WL

A collection of 2, 3 and 4 bedroom Shared Ownership homes and apartments.



bromfordhomes.co.uk/perrybrook

On your doorstep

Our new Bromford Shared Ownership homes in Brockworth have plenty of local amenities for everyday living on your doorstep. With Gloucester and Cheltenham both only 20 minutes away and the stunning Cotswold reachable in under 5 minutes, you'll be well placed to enjoy country life whilst still being close to the town and able to commute with ease.



**Henley Bank
High School**
1.1 miles



**Gloucester
Railway Station**
5 miles



M5 Junction 11
4 miles

Local area connection

To meet the needs of local people most of our homes for sale require a local connection to the area. The connection criteria varies between sites, but generally it's based on:

- Being a resident (or employed within) the area for a number of years (usually between 2 to 5)
- Family connections – for example, parent, grandparent, child, grandchild or adult sibling – who have lived in the area for at least three years

Priority will be given to applicants who have a connection to the Gloucestershire area.

If you need any more information, please speak to one of our helpful Sales Consultants.

We follow Homes England Guidelines on First Come, First Served policies for Shared Ownership homes. Please visit [our policies page](#) for full policy details

Bromford.
Shared Ownership

Perrybrook

Court Road, Brockworth, Gloucester, GL3 4WL



- N** The Nuthatch
2 bed home
- S** The Skylark
3 bed home
- Ha** The Hawker
2 bed apartment
- Bromford**
rented homes
- Crest Nicholson**



Plots: 56, 57, 60, 61, 64, 65 & 68

The Nuthatch

2 bedroom home



2 bedrooms



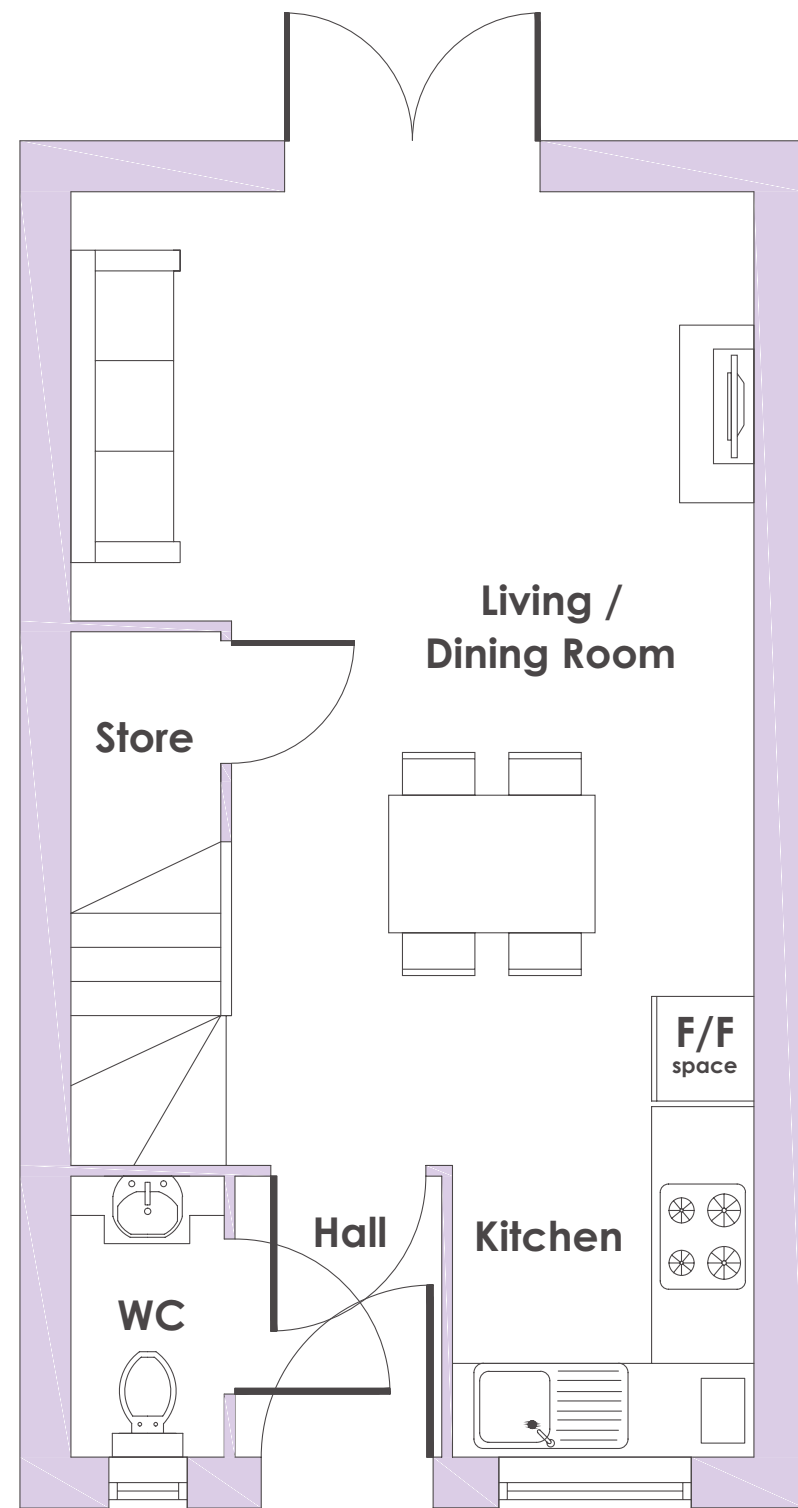
Energy
efficient



Turf to rear
garden



12 Year Premier
Guarantee



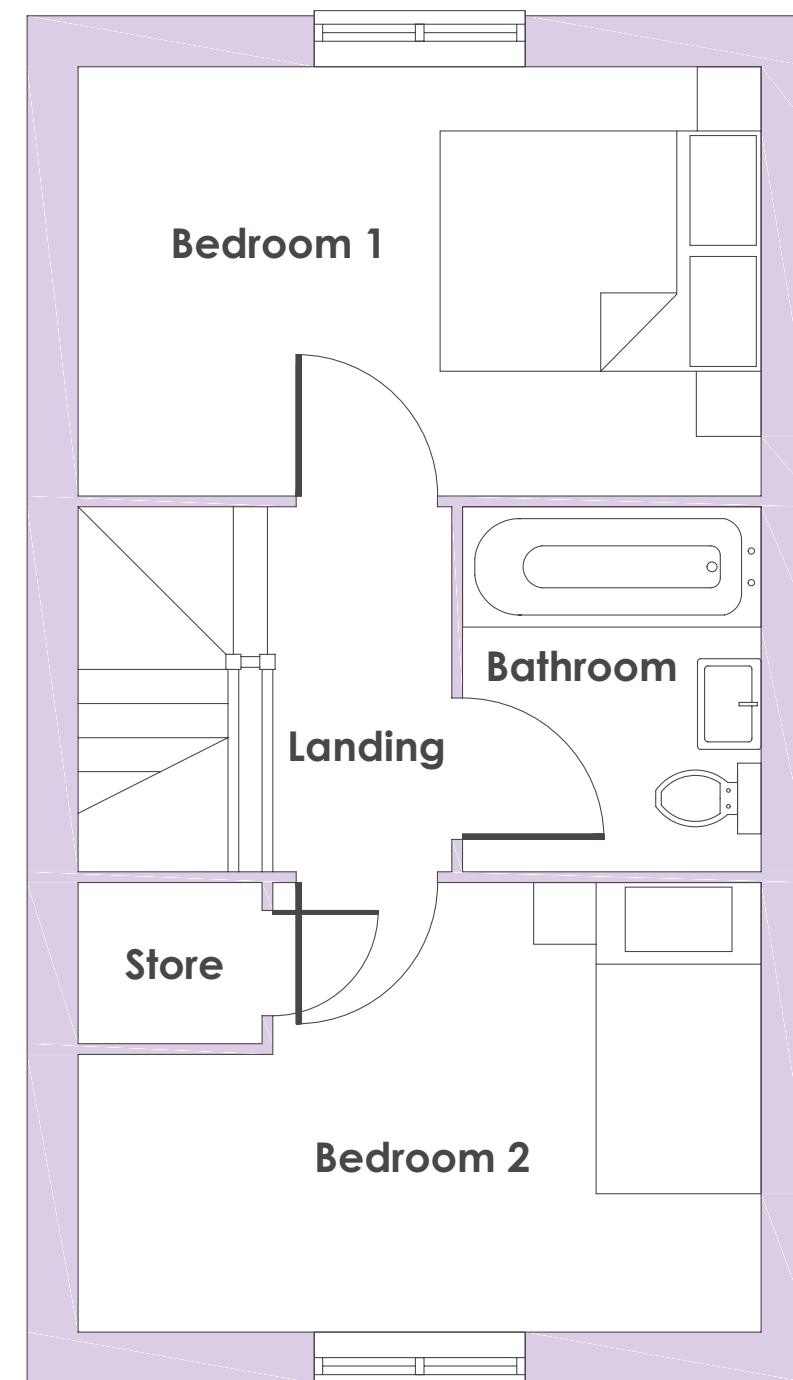
Ground floor

Kitchen

1.77m x 1.65m / 5'10" x 5'5"

Living / Dining Room

5.71m x 4.01m / 18'9" x 13'2"



First floor

Bedroom 1

4.01m x 2.52m / 13'2" x 8'3"

Bedroom 2

4.01m x 2.64m / 13'2" x 8'8"



- Energy-efficient
- Modern open-plan living space
- Integrated cooker, hob and extractor hood
- French doors leading to rear garden

- Guest cloakroom
- Useful storage
- Parking for two cars
- 12-year premier guarantee

Plots: 55, 58, 59, 62, 63, 66, 67 & 69

The Skylark

3 bedroom home



3 bedrooms



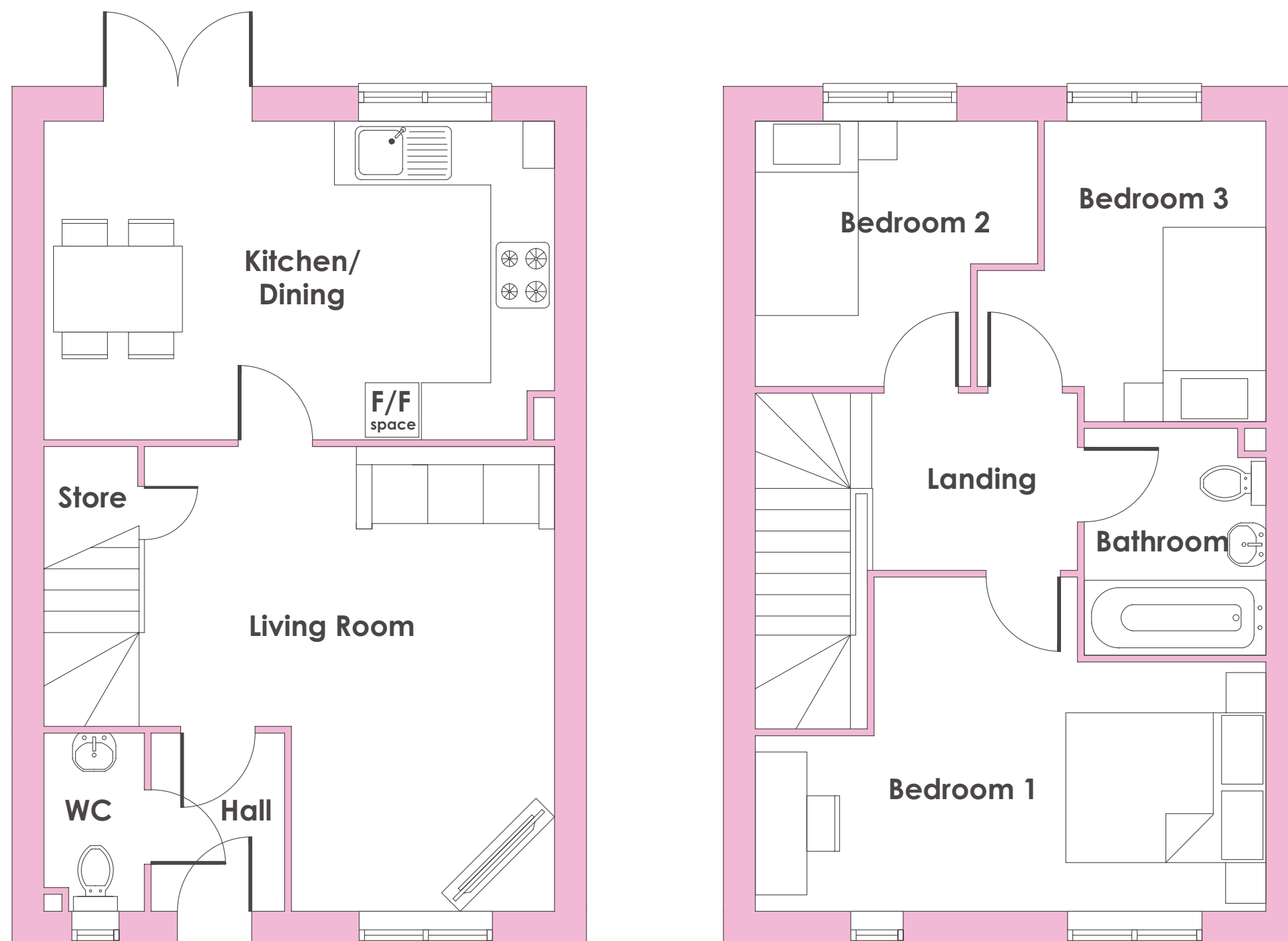
Energy
efficient



Turf to rear
garden



12 Year Premier
Guarantee



Ground floor

Kitchen / Dining

4.81m x 3.0m / 15'9" x 9'10"

Living room

4.37m x 3.79m / 14'4" x 12'5"

First floor

Bedroom 1

4.80m x 3.14m / 15'9" x 10'4"

Bedroom 2

2.66m x 2.50m / 8'9" x 8'2"

Bedroom 3

2.83m x 2.72m / 9'3" x 8'11"



- Energy-efficient home
- Open-plan kitchen-diner
- Integrated cooker, hob and extractor hood
- French doors leading to rear garden

- Guest cloakroom
- Useful storage
- Driveway parking for two cars
- 12-year Premier Guarantee

Plots: 36

The Hawker

2 bedroom ground floor apartment



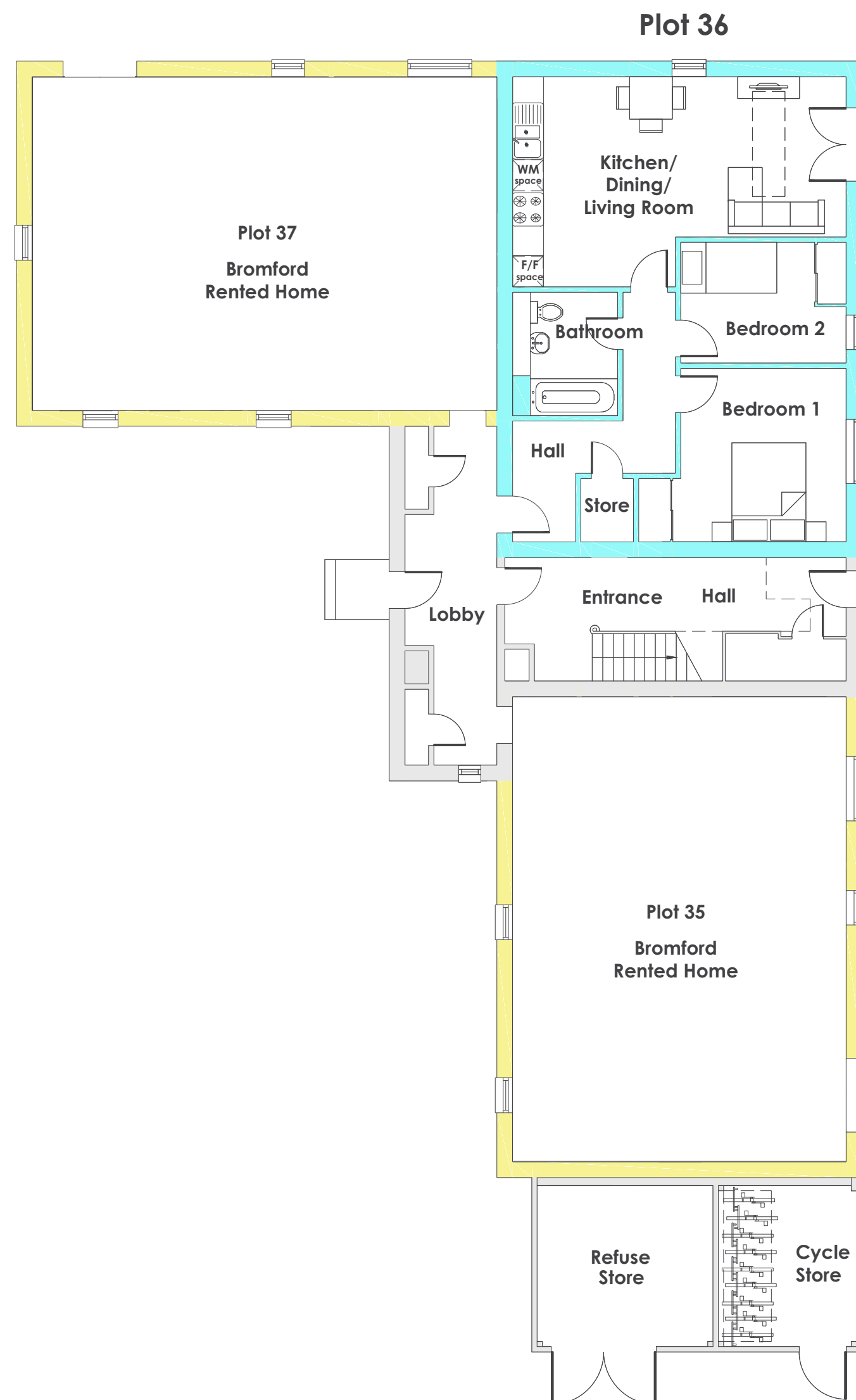
2 bedrooms



Energy
efficient



12 Year Premier
Guarantee



Plot 36

Kitchen / Dining / Living
6.43m x 5.71m / 20'1" x 18'9"

Bedroom 1
3.19m x 3.11m / 10'6" x 10'3"

Bedroom 2
3.19m x 2.30m / 10'6" x 7'7"



- Energy-efficient apartment
- Open-plan living
- Fitted kitchen with integrated oven, hob and extractor hood
- Double-doors to Juliet balcony
- Modern bathroom
- Useful storage
- Allocated parking

Plots: 38, 39 & 40

The Hawker

2 bedroom first floor apartments



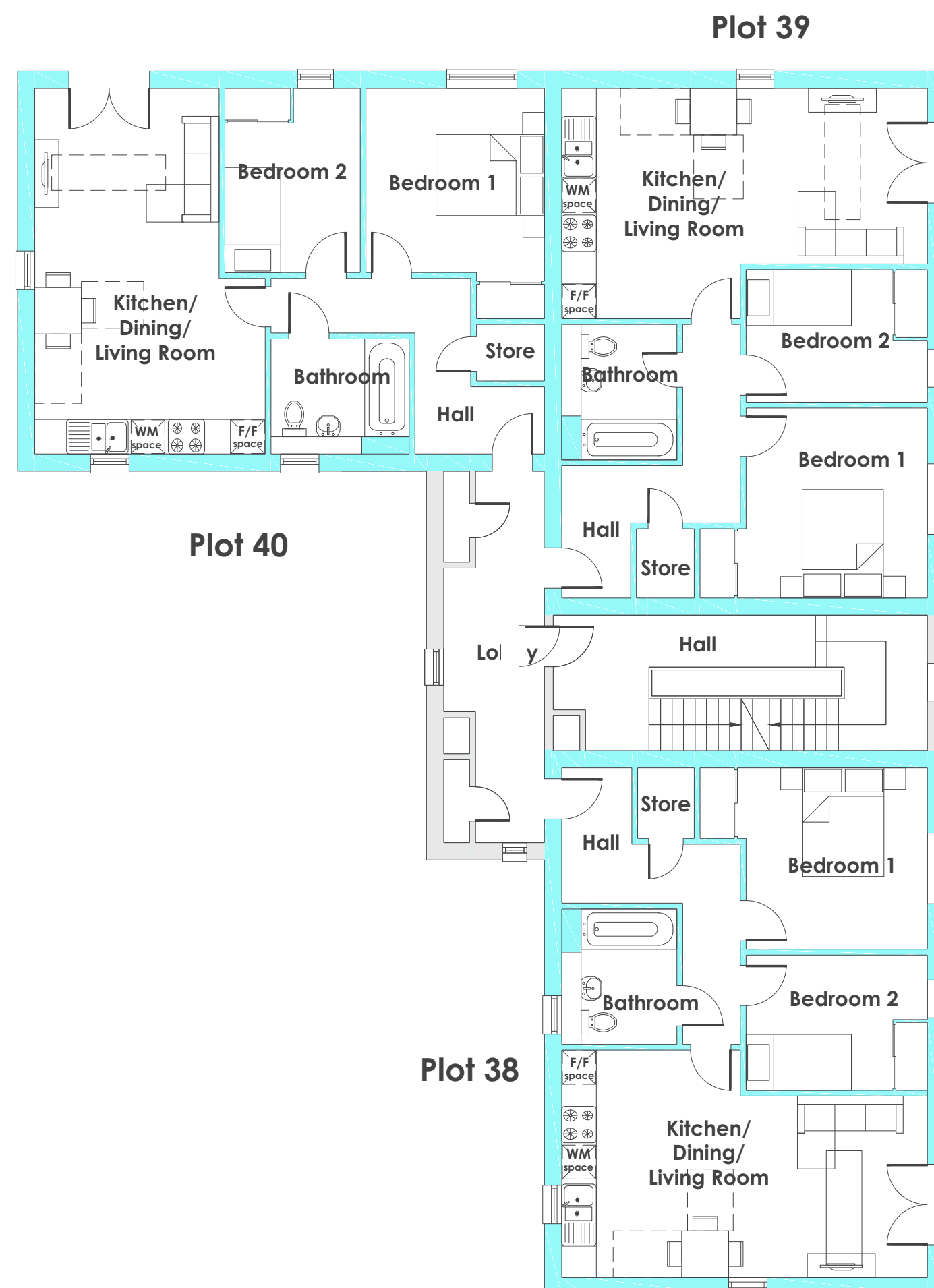
2 bedrooms



Energy
efficient



12 Year Premier
Guarantee



Plot 38

Kitchen / Dining / Living
6.43m x 3.96m / 20'1" x 13'0"
Bedroom 1
3.19m x 3.11m / 10'6" x 10'3"
Bedroom 2
3.19m x 2.30m / 10'6" x 7'7"

Plot 39

Kitchen / Dining / Living
6.43m x 3.96m / 20'1" x 13'0"
Bedroom 1
3.19m x 3.11m / 10'6" x 10'3"
Bedroom 2
3.19m x 2.30 / 10'6" x 7'7"

Plot 40

Kitchen / Dining / Living
6.43m x 3.96m / 20'1" x 13'0"
Bedroom 1
3.19m x 3.11m / 10'6" x 10'3"
Bedroom 2
3.19m x 2.30m / 10'6" x 7'7"



- Energy-efficient apartment
- Open-plan living
- Fitted kitchen with integrated oven, hob and extractor hood
- Double-doors to Juliet balcony
- Modern bathroom
- Useful storage
- Allocated parking

Plots: 41, 42 & 43

The Hawker

2 bedroom second floor apartments



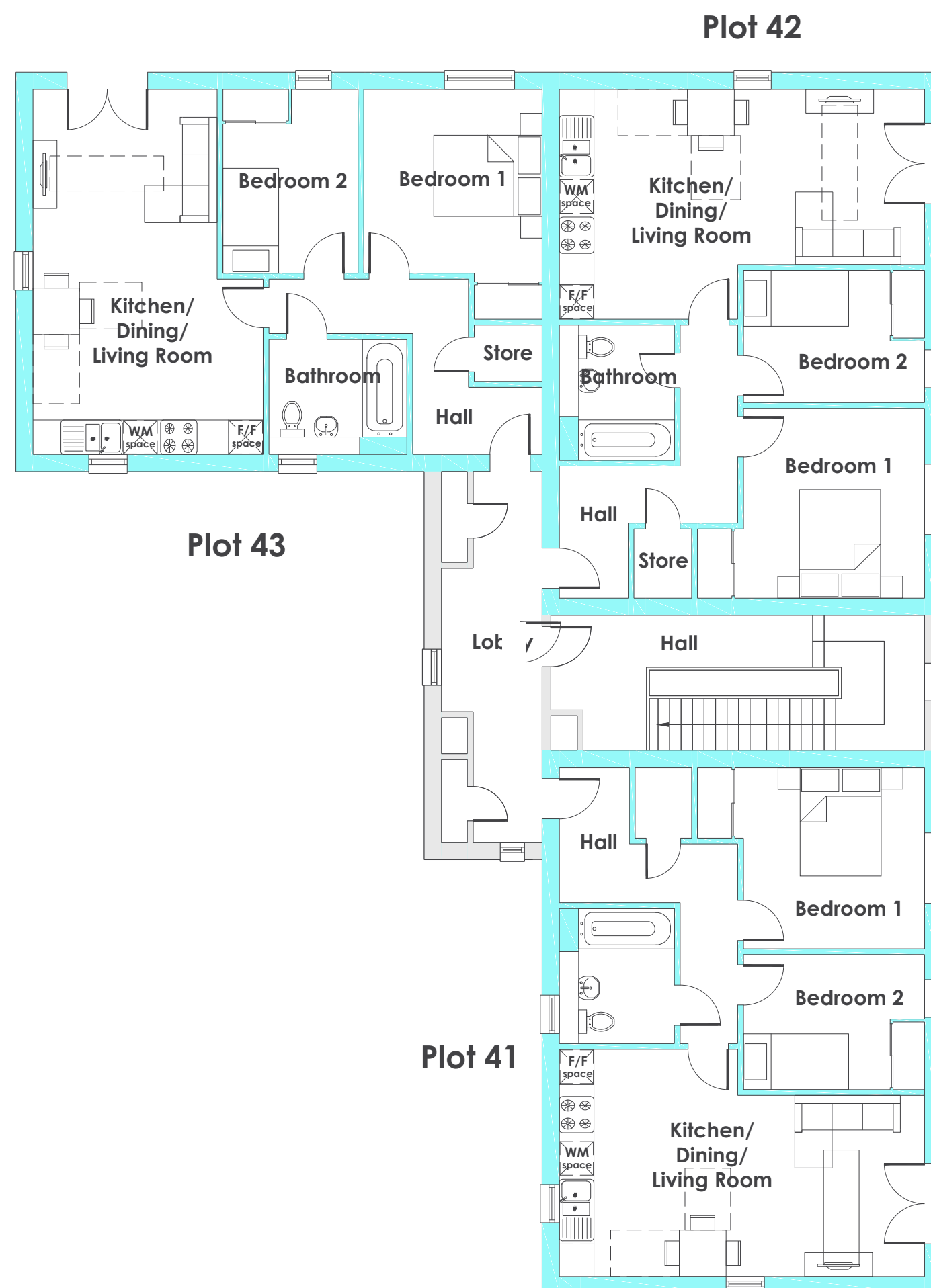
2 bedrooms



Energy
efficient



12 Year Premier
Guarantee



Plot 41

Kitchen / Dining / Living
6.43m x 3.96m / 20'1" x 13'0"

Bedroom 1
3.19m x 3.11m / 10'6" x 10'3"

Bedroom 2
3.19m x 2.30m / 10'6" x 7'7"

Plot 42

Kitchen / Dining / Living
6.43m x 3.96m / 20'1" x 13'0"

Bedroom 1
3.19m x 3.11m / 10'6" x 10'3"

Bedroom 2
3.19m x 2.30m / 10'6" x 7'7"

Plot 43

Kitchen / Dining / Living
6.43m x 3.96m / 20'1" x 13'0"

Bedroom 1
3.19m x 3.11m / 10'6" x 10'3"

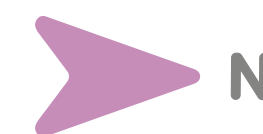
Bedroom 2
3.19m x 2.30m / 10'6" x 7'7"



- Energy-efficient apartment
- Open-plan living
- Fitted kitchen with integrated oven, hob and extractor hood
- Double-doors to Juliet balcony
- Modern bathroom
- Useful storage
- Allocated parking

Perrybrook

Court Road, Brockworth,
Gloucester, GL3 4WL



- N** The Ashted
2 bed home
- S** The Chesham
3 bed home
- L** The Leigh
3 bed home
- Ht** The Hatfield
3 bed home
- M** The Marlborough
4 bed home
- Bromford**
rented homes
- Crest Nicholson**

Scan with what3words

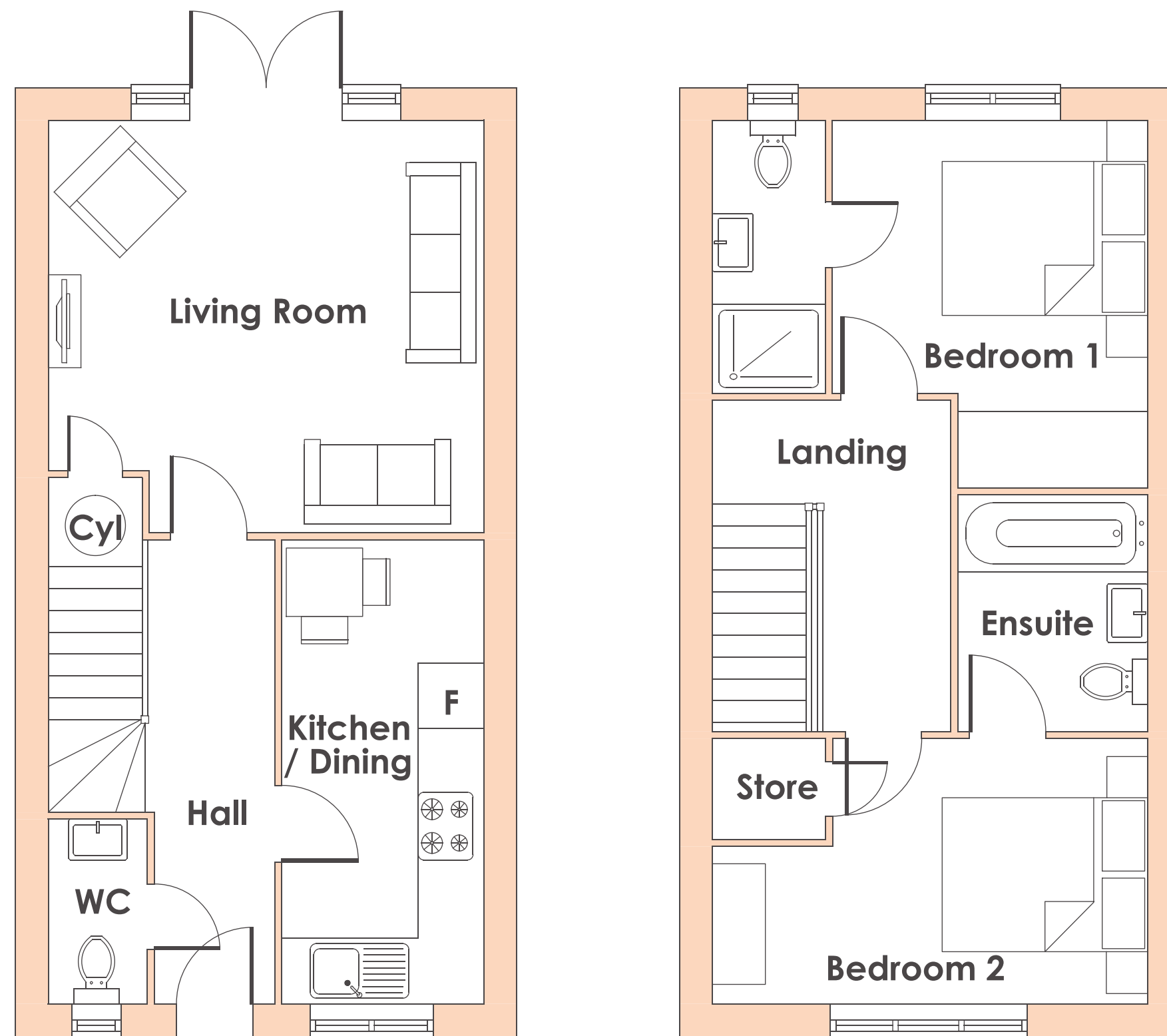
///what.three.words

Artist's impression drawn from architect's plans to show the relative position of individual properties. NOT TO SCALE. This is a two dimensional drawing and will not show land contours and gradients, boundary treatments, landscaping or local authority street lighting. Please contact our sales team for more information.

Plots: 249 - 252

The Ashtead

2 bedroom home



Ground floor

Kitchen / Dining

4.25m x 1.85m / 13'11" x 6'1"

Living

3.99m x 3.78m / 13'1" x 12'5"

First floor

Bedroom 1

3.37m x 2.89m / 11'1" x 9'6"

Bedroom 2

3.99m x 2.43m / 13'1" x 8'0"



2 bedrooms



Energy
efficient



Turf to rear
garden



12 Year Premier
Guarantee



- Open-plan kitchen-diner
- Convenient guest cloakroom
- Good sized lounge
- French doors to private turfed garden
- Master bedroom with en suite
- Second double-bedroom with en suite
- Allocated parking for two cars

Plots: 256 & 404

The Chesham

3 bedroom home



3 bedrooms



Energy
efficient



Turf to rear
garden



12 Year Premier
Guarantee



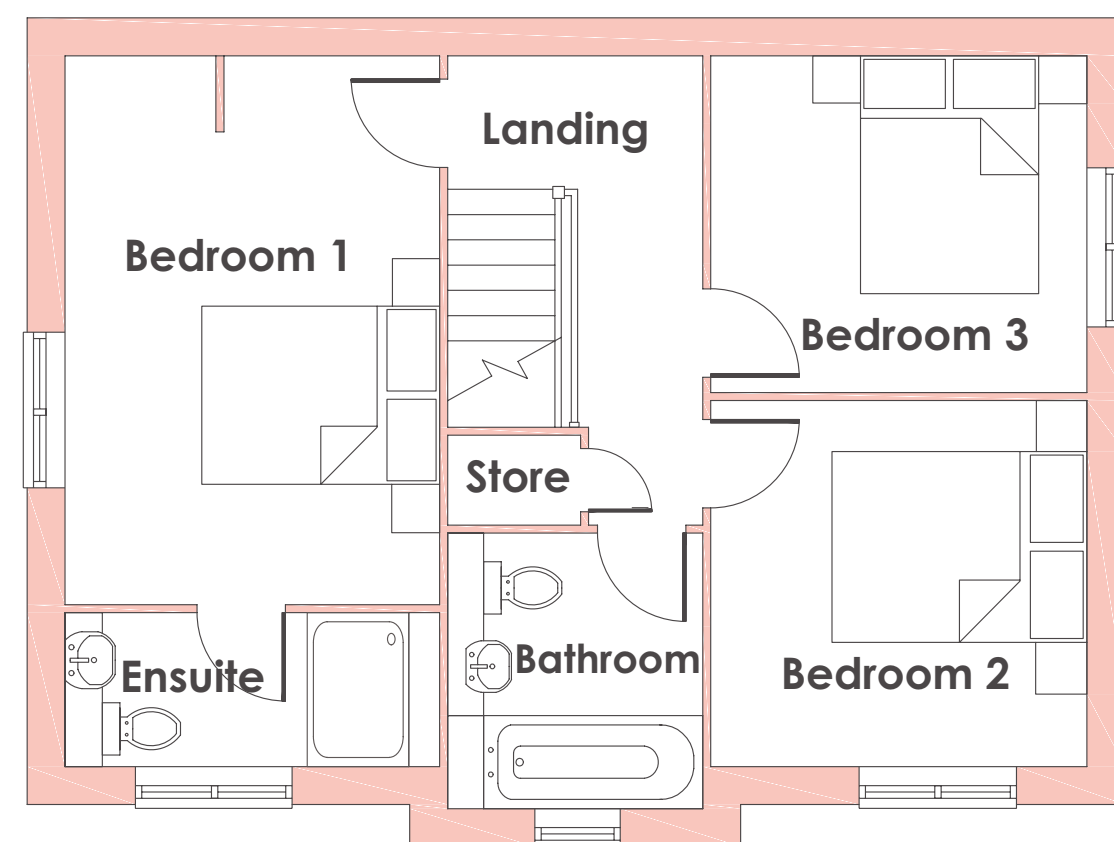
Ground floor

Kitchen / dining

5.63m x 2.98m / 18'6" x 9'9"

Living Room

5.63m x 2.93m / 18'6" x 9'7"



First floor

Bedroom 1

4.34m x 2.98m / 14'3" x 9'9"

Bedroom 2

2.98m x 2.90m / 9'9" x 9'6"

Bedroom 3

2.98m x 2.66m / 9'9" x 8'9"



- Open-plan kitchen-diner
- Good sized lounge with bay window
- French doors to private turfed garden
- Convenient guest cloakroom
- Master bedroom with ensuite
- Modern family bathroom
- Useful storage
- Off-street parking for two cars

Plots: 253, 254, 255

The Leigh

3 bedroom home



3 bedrooms



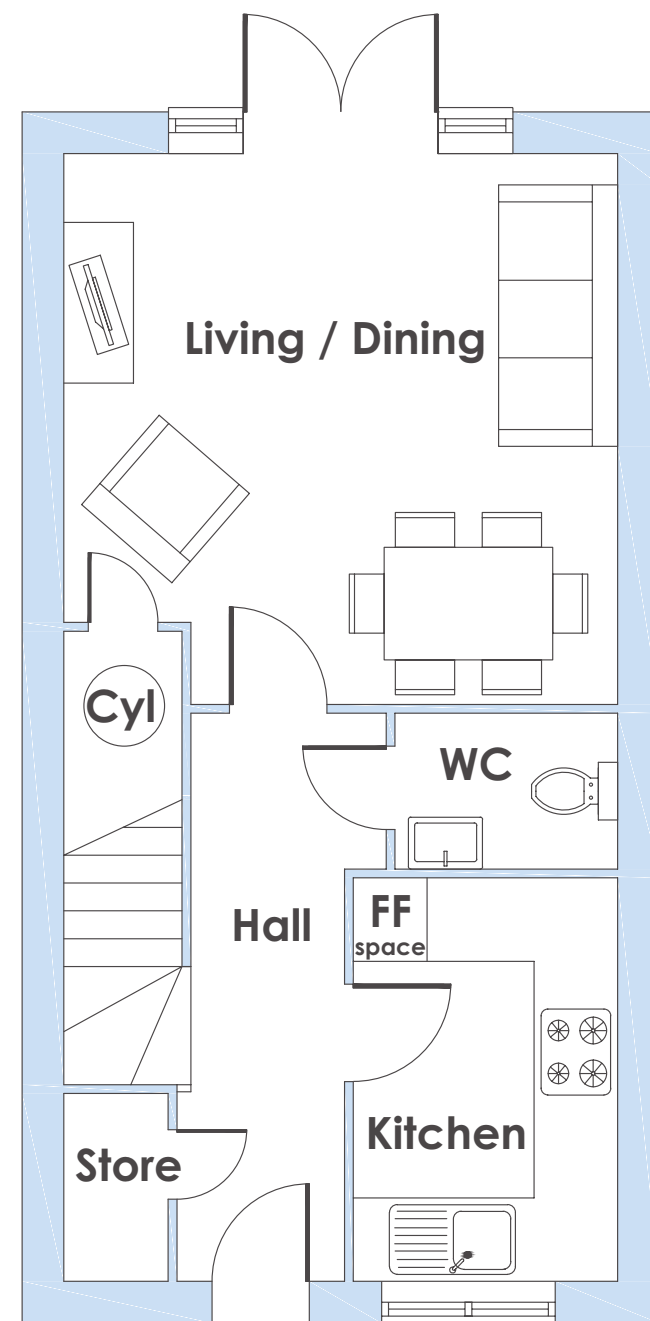
Energy
efficient



Turf to rear
garden



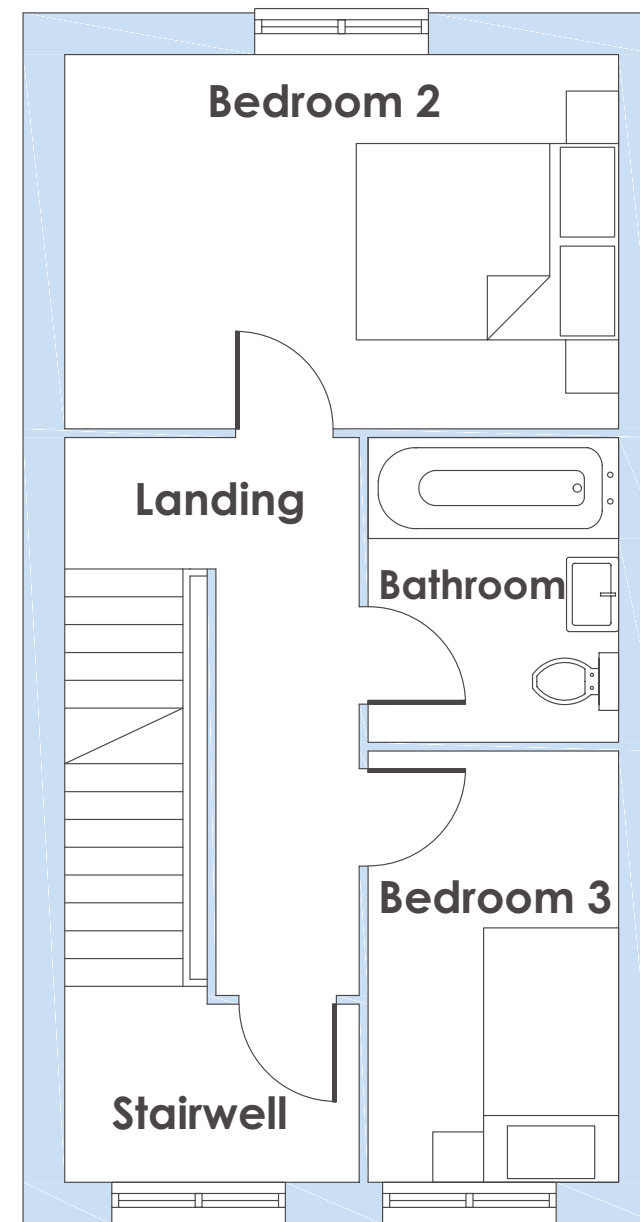
12 Year Premier
Guarantee



Ground floor

Living / Dining
3.98m x 3.96m
13'1" x 13'0"

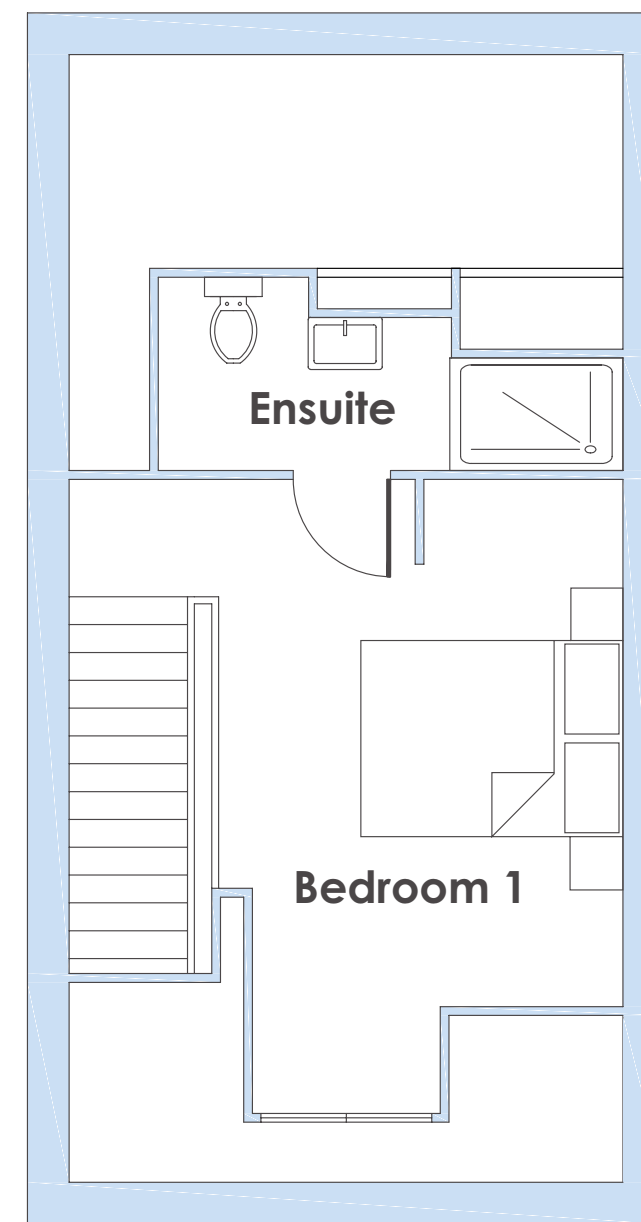
Kitchen
2.90m x 1.90m
9'6" x 6'3"



First floor

Bedroom 1
3.98m x 2.69m
13'1" x 8'10"

Bedroom 2
3.10m x 1.80m
10'2" x 5'11"



Second floor

Bedroom 1
4.55m x 3.98m
14'11" x 13'1"



- Energy-efficient home
- Open-plan lounge-diner
- French doors to private turfed garden
- Wrap-around fully-fitted kitchen
- Convenient guest cloakroom
- Modern fitted bathroom
- Spacious master bedroom with en suite
- Allocated parking for two cars

Plots: 257 405, 406, 408, 410 & 411

The Hatfield

3 bedroom home



3 bedrooms



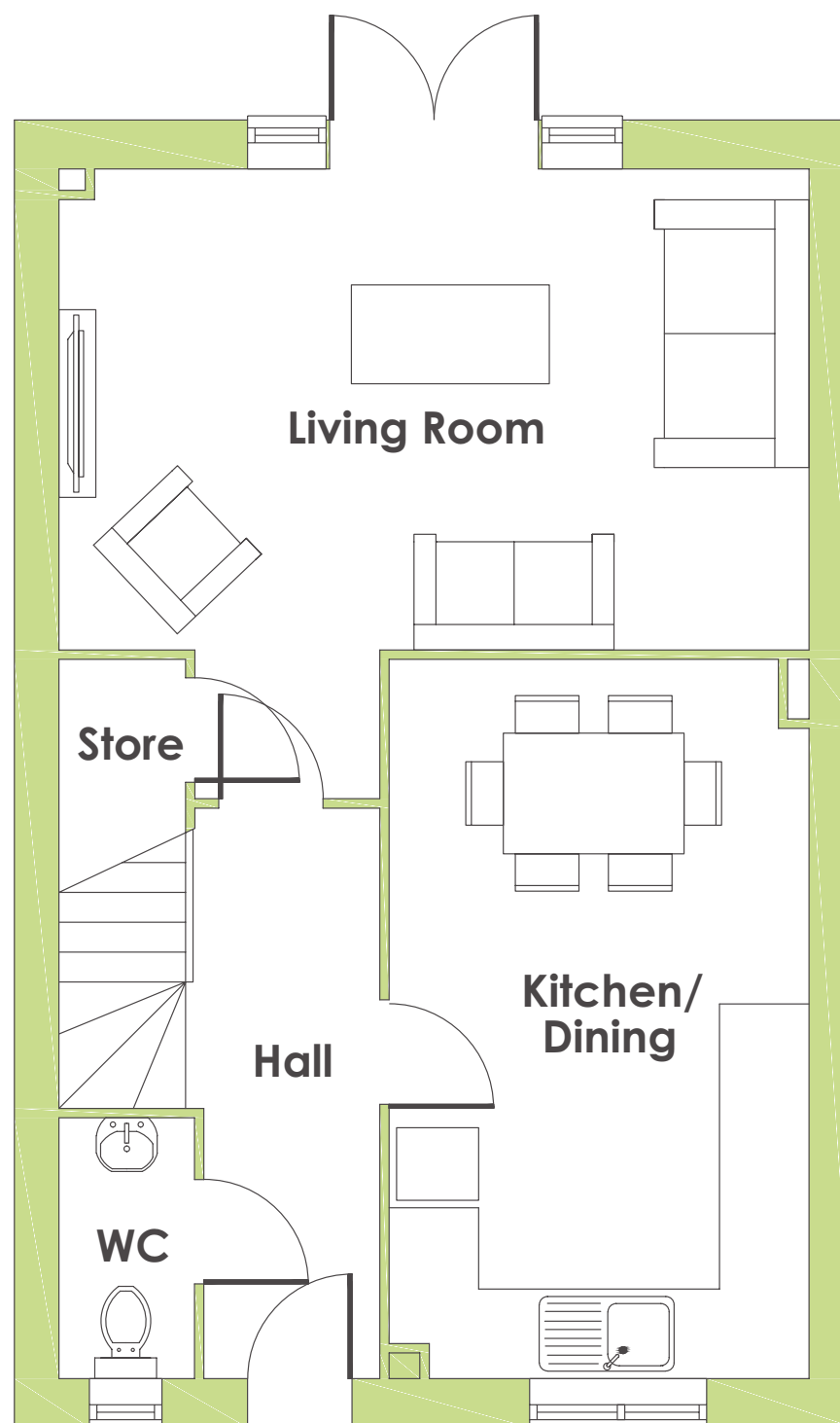
Energy
efficient



Turf to rear
garden



12 Year Premier
Guarantee



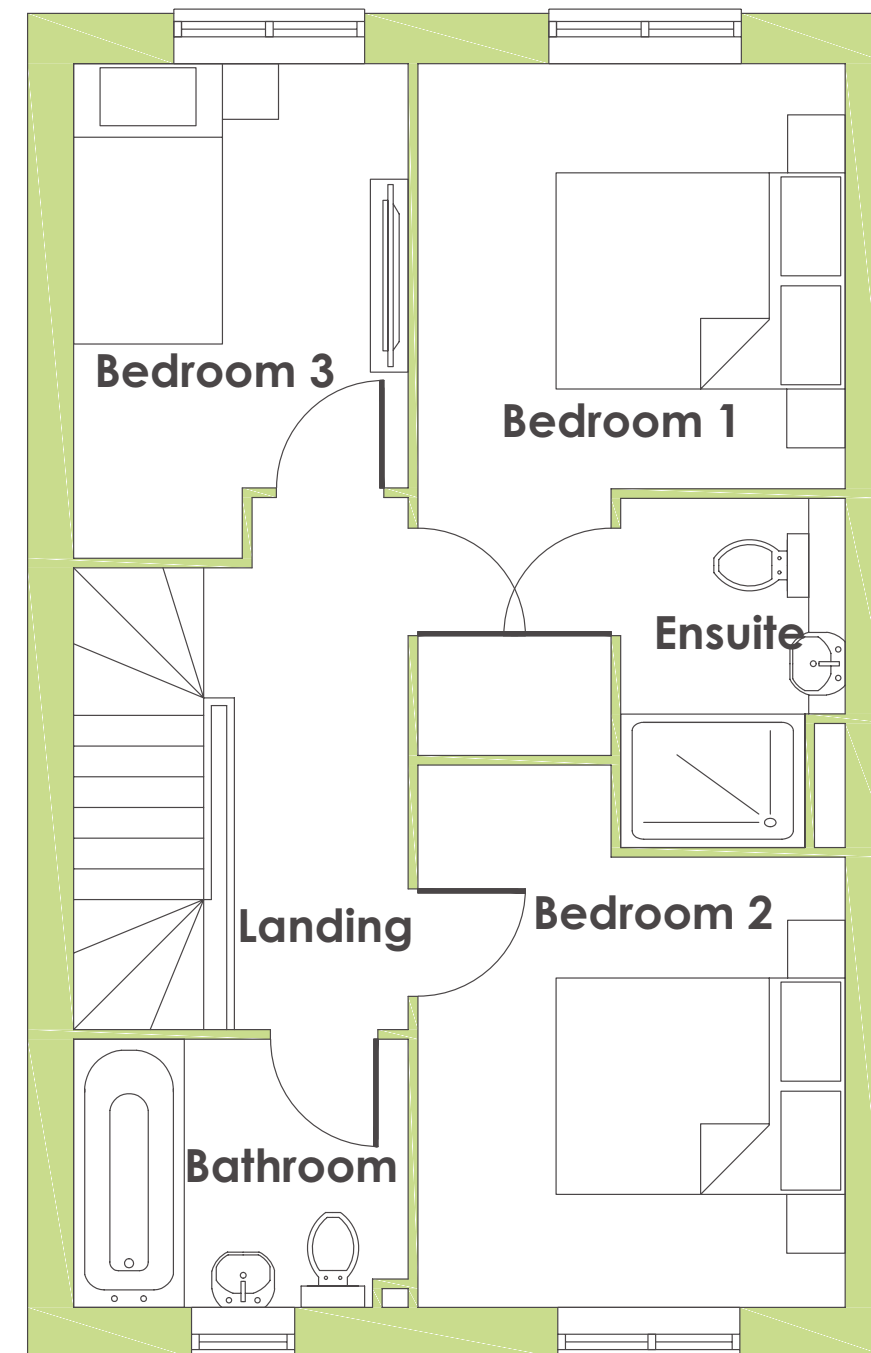
Ground floor

Kitchen / Dining

4.82m x 2.81m / 15'10" x 9'3"

Living Room

5.03m x 3.23m / 16'6" x 10'7"



First floor

Bedroom 1

4.51m x 2.77m / 14'10" x 9'1"

Bedroom 2

3.54m x 2.79m / 11'7" x 9'2"



- Open-plan kitchen-diner
- Good sized lounge
- French doors to private turfed garden
- Convenient guest cloakroom
- Master bedroom with ensuite
- Modern family bathroom
- Useful storage
- Off-street parking for two cars

Plots: 409 & 412

The Marlborough

4 bedroom home



4 bedrooms



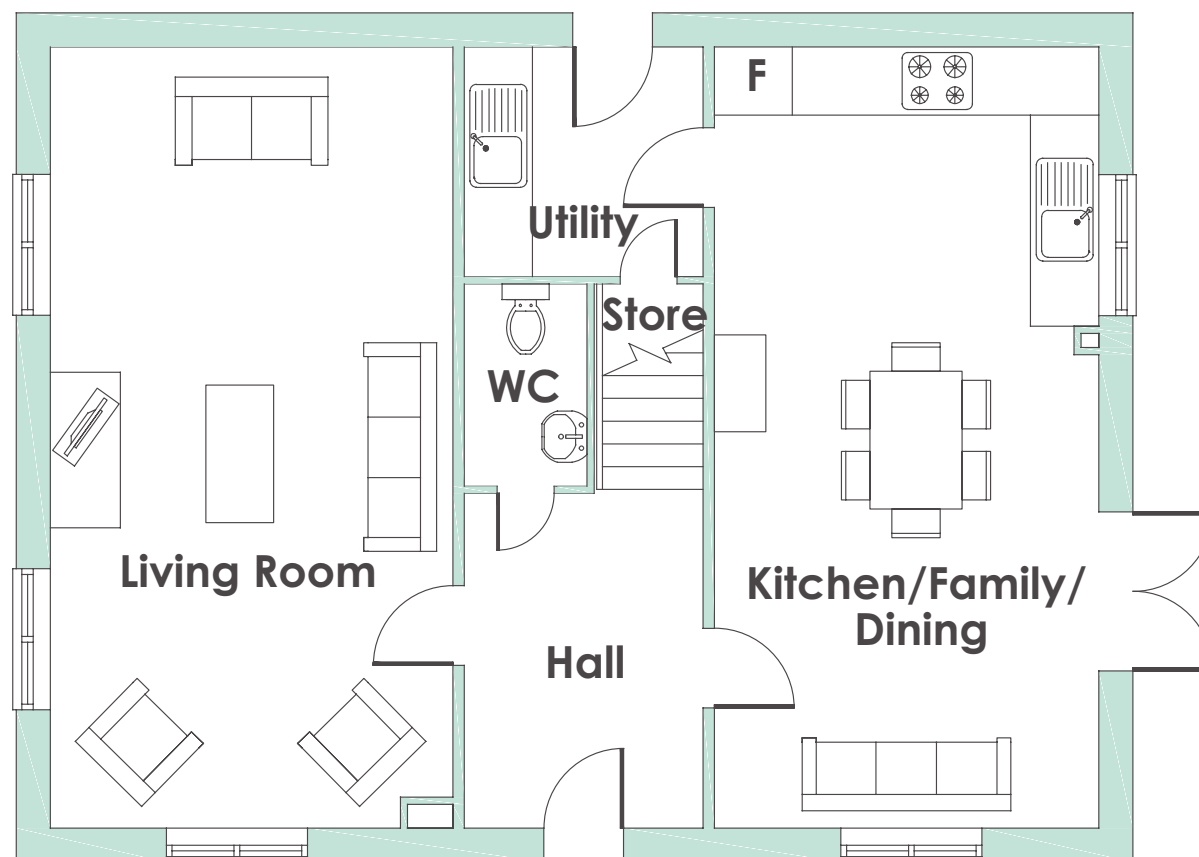
Energy
efficient



Turf to rear
garden



12 Year Premier
Guarantee



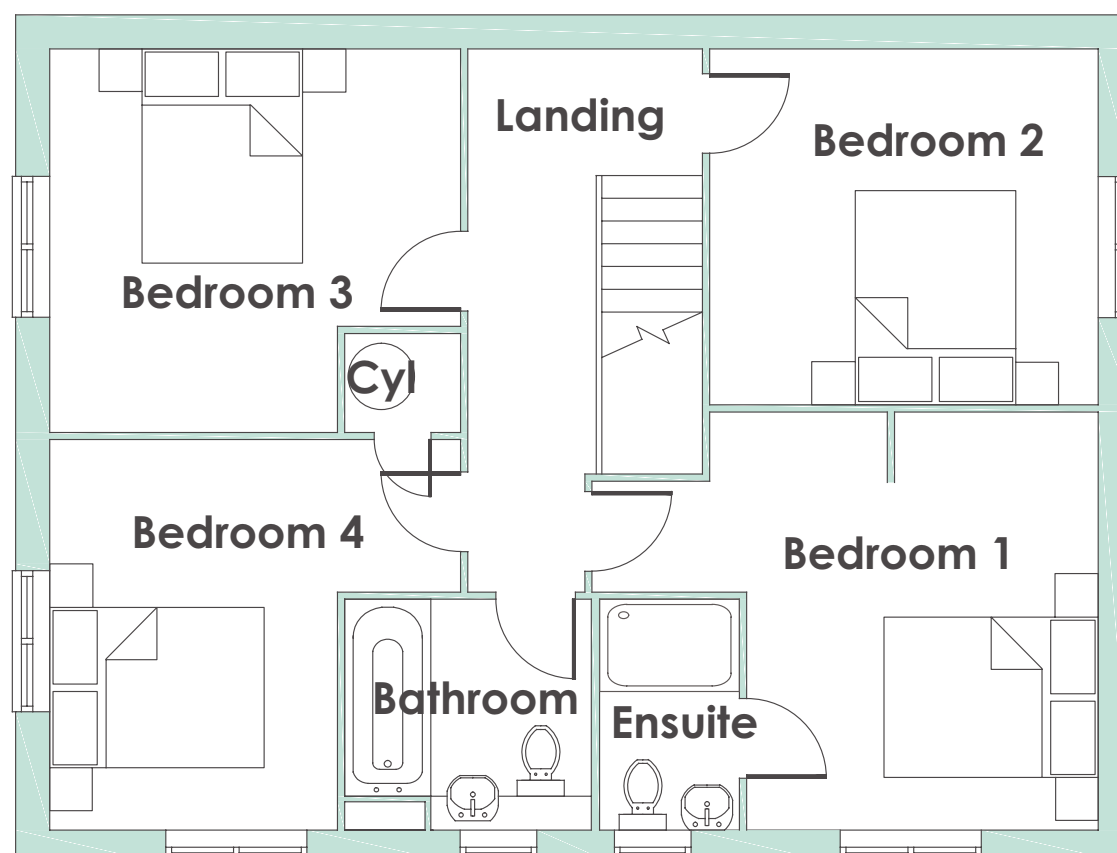
Ground floor

Kitchen

6.87m x 3.38m / 22'7" x 11'1"

Living / Dining Room

6.87m x 3.54m / 22'7" x 11'7"



First floor

Bedroom 1

3.67m x 3.09m / 12'1" x 10'2"

Bedroom 2

3.43m x 3.13m / 11'3" x 10'3"

Bedroom 3

3.62m x 3.38m / 11'11" x 11'1"

Bedroom 4

3.62m x 3.42m / 11'11" x 11'3"



- Good sized lounge
- Open-plan kitchen-diner with utility
- French doors to private turfed garden
- Convenient guest cloakroom
- Master bedroom with en suite
- Modern family bathroom
- Useful storage throughout
- Off-street parking for two cars



Who are we?

Since 1963 we have been providing customers with new and affordable homes. We want all of our customers to thrive and believe that with the right homes and someone who believes in their potential, almost anything is possible - with Bromford Shared Ownership we're helping more people than ever before to realise their dreams of owning their home.

Where does my money go when I buy a Bromford home? As a registered charity through the FCA registered societies, all the money Bromford makes goes back into the communities we work in and helps the people we work with thrive for a better safer life.



Shannon Way,
Ashchurch,
Tewkesbury,
GL20 8ND

0800 0852 499
sales@bromford.co.uk
bromfordhomes.co.uk



Follow us on TikTok

Visit the Home Ownership Hub to find
out more about your new home
bromfordhomes.co.uk/home-ownership-hub



Bromford abides by the Consumer Protection
from Unfair Trading Regulations 2008



Bromford.
Shared Ownership