

SHARED OWNERSHIP AT  
**HEPWORTH PLACE**  
WALTHAMSTOW

BRAMBLE APARTMENTS  
FLOORPLANS







# DESIGNED FOR: MODERN LIFESTYLES

## KITCHEN

- Contemporary units with Matt nickel door handles and under cupboard strip lighting
- Brazillia grey worktop and matching upstand
- Stainless steel one and a half bowl sink and drainer with chrome mixer tap
- Integrated single electric oven
- Electric hob
- Integrated extractor hood
- Integrated fridge/freezer
- Freestanding washer/dryer in cupboard/kitchen
- White recessed downlighters to ceilings

## BATHROOM

- White sanitaryware with contemporary chrome accessories
- Semi-recessed hand basin with chrome mixer tap
- Full height and width mirror behind sink from splashback
- Bath with panel in driftwood. Shower over bath
- Frameless square shower screen
- Back to wall soft close WC with concealed dual-flush cistern
- Thermostatic shower mixer with slider rail
- Porcelain wall tiles full height around bath/shower
- Chrome heated towel rail
- Shaver socket
- White recessed downlighters

## DECORATION

- Spring Thaw, 80/20 wool twist carpet fitted to all bedrooms, stairs and landing
- Amtico flooring in hallway, kitchen and living room
- All walls and ceilings painted white
- Skirtings and architraves painted satin white
- Veneer front door in driftwood with chrome ironmongery
- Internal doors painted satin white with chrome ironmongery

## HEATING, LIGHTING & ELECTRICAL

- Power points and electrical fittings conveniently positioned throughout
- Underfloor heating
- Chrome USB-A and USB-C and double sockets conveniently positioned throughout
- Superfast Hyperoptic Broadband or option for Sky, Virgin and BT
- Pendant lighting to bedroom(s)
- White recessed downlighters to all other rooms
- Smoke alarms and heat detectors positioned where required throughout
- Exterior light to balconies and terraces

Every care has been taken in the preparation of this brochure. The details contained therein are for guidance only and should not be relied upon as exactly describing any of the particular material illustrated or written by any order under the Consumer Protection from Unfair Trading Regulations 2008. This information does not constitute a contract, part of a contract or warranty. Features, internal and external, may vary from time to time and may differ from those shown in the brochure. Specification may differ, please ask a Sales Consultant for more details.

# SITE MAP

## SHARED OWNERSHIP AT HEPWORTH PLACE

- ① Honeycomb Court (SOLD)
- ② **Bramble Apartments**
- ③ Greenway House
- ④ Bullerswood Court & Foale Court

## CIVIC SPACES AT HEPWORTH PLACE

- ⑤ Waltham Forest Town Hall
- ⑥ Assembly Hall
- ⑦ Fellowship Square
- ⑧ Civic Centre

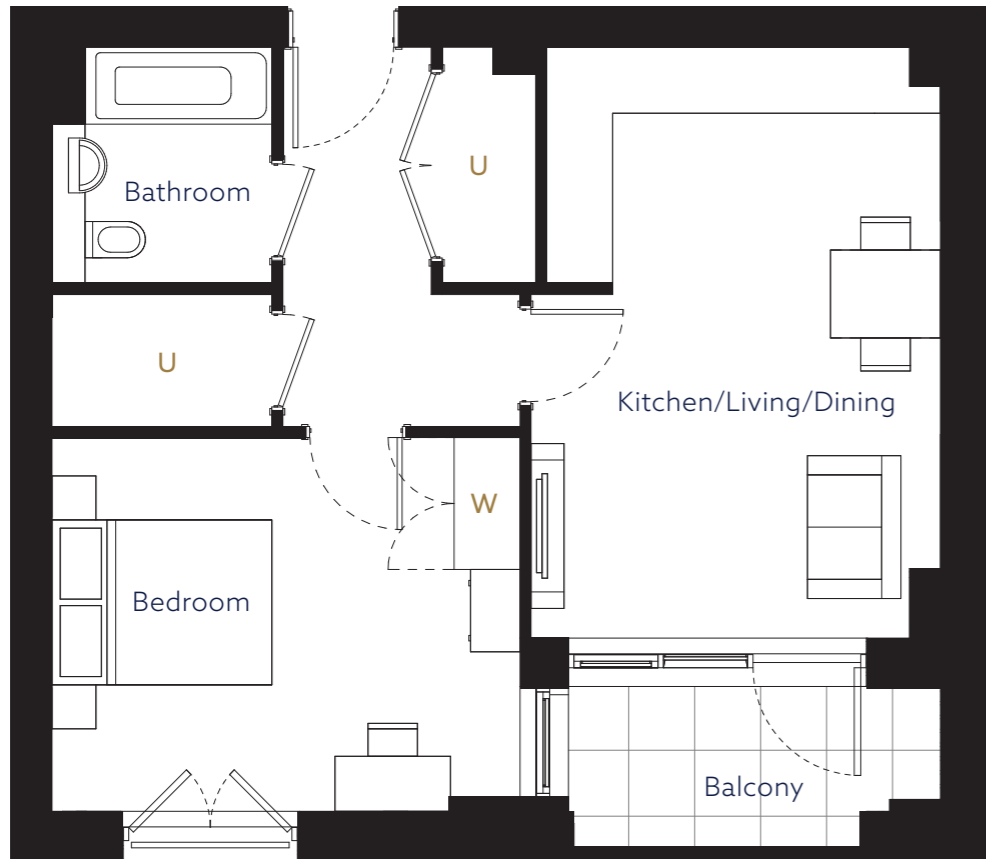
## SURROUNDING AREA, GROUNDS AND ROADS

- ⑨ Hepworth Place Grounds
- ⑩ Chestnuts Field
- ⑪ A503 Forest Road
- ⑫ Faman Avenue



**ONE BEDROOM**

PLOTS: 70 (FIRST), 75 (SECOND), 82 (THIRD), 89 (FOURTH),  
 96 (FIFTH) AND 103 (SIXTH)

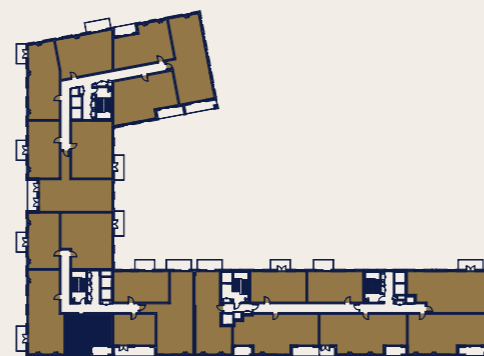


◀ NORTH

U Utility Cupboard | W Wardrobe

ROOM	METRIC	IMPERIAL
Kitchen/Living/Dining	5.37 x 3.58	17' 7" x 11' 8"
Bedroom	3.40 x 4.25	11' 1" x 13' 11"
Bathroom	2.15 x 2.00	7' 0" x 6' 6"
<b>TOTAL</b>	<b>50m<sup>2</sup></b>	<b>538ft<sup>2</sup></b>

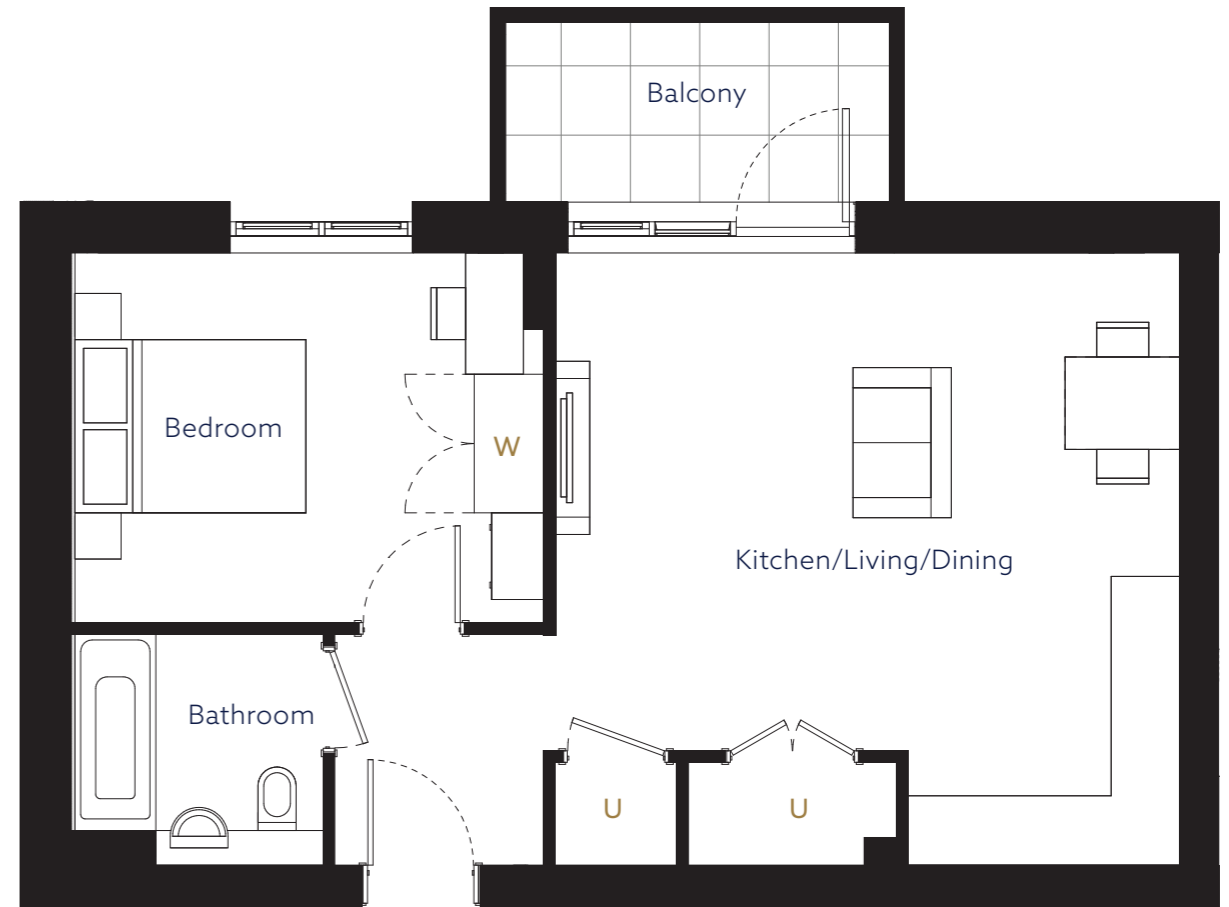
◀ NORTH PLOT LOCATOR



Floor plans are not to scale and are indicative only. Location of windows, doors, bathroom fittings, kitchen units and appliances may differ. Dimensions given are approximate and should not be used to order carpets or furniture. External area sizes and locations may differ from those illustrated.

**ONE BEDROOM**

PLOTS: 72 (SECOND), 79 (THIRD), 86 (FOURTH), 93 (FIFTH) AND 100 (SIXTH)

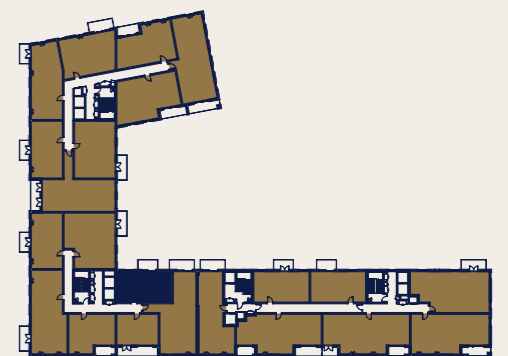


◀ NORTH

U Utility Cupboard | W Wardrobe

ROOM	METRIC	IMPERIAL
Kitchen/Living/Dining	5.41 x 5.30	17' 8" x 17' 4"
Bedroom	4.06 x 3.20	13' 3" x 10' 5"
Bathroom	2.15 x 2.00	7' 0" x 6' 6"
<b>TOTAL</b>	<b>50m<sup>2</sup></b>	<b>548ft<sup>2</sup></b>

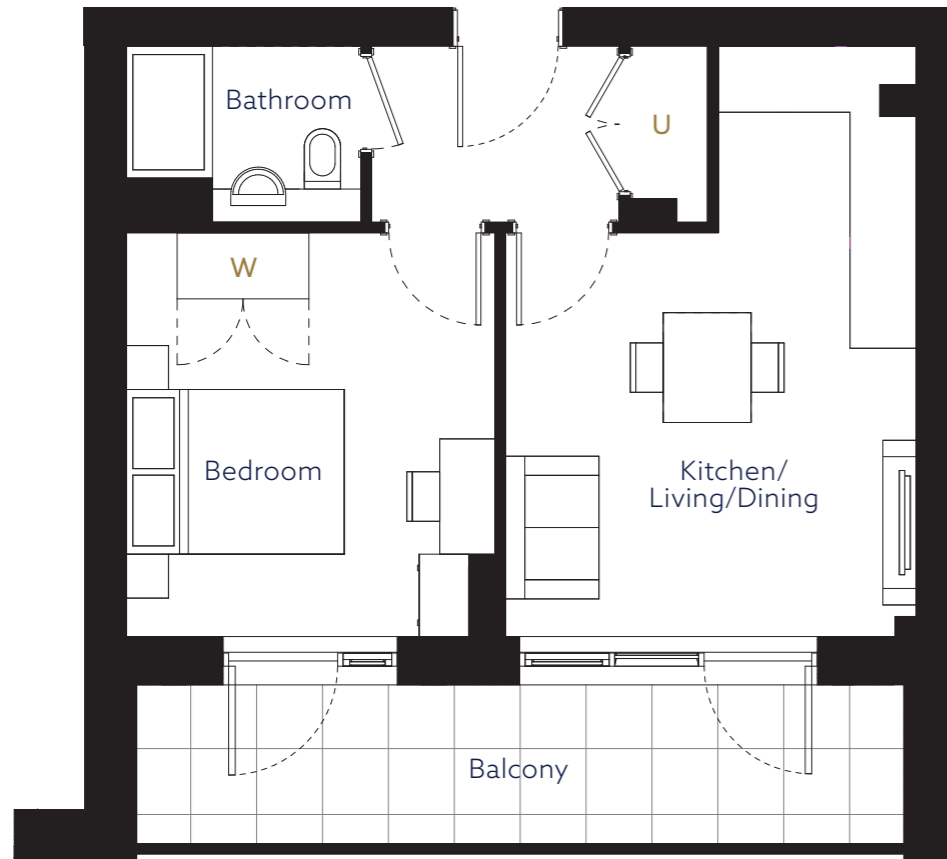
◀ NORTH PLOT LOCATOR



Floor plans are not to scale and are indicative only. Location of windows, doors, bathroom fittings, kitchen units and appliances may differ. Dimensions given are approximate and should not be used to order carpets or furniture. External area sizes and locations may differ from those illustrated.

**ONE BEDROOM**

PLOTS: 74 (SECOND), 81 (THIRD), 88 (FOURTH), 95 (FIFTH) AND 102 (SIXTH)

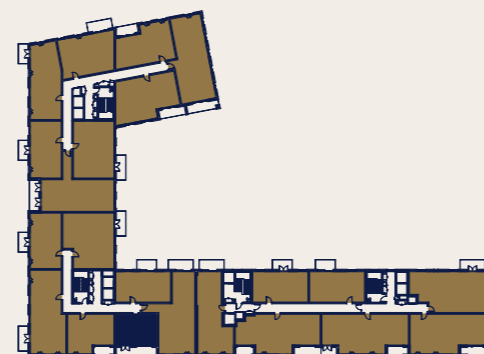


◀ NORTH

U Utility Cupboard | W Wardrobe

ROOM	METRIC	IMPERIAL
Kitchen/Living/Dining	5.37 x 3.73	17' 7" x 12' 2"
Bedroom 1	3.67 x 3.37	12' 0" x 11' 0"
Bathroom	1.60 x 2.15	5' 2" x 7' 5"
<b>TOTAL</b>	<b>38m<sup>2</sup></b>	<b>419ft<sup>2</sup></b>

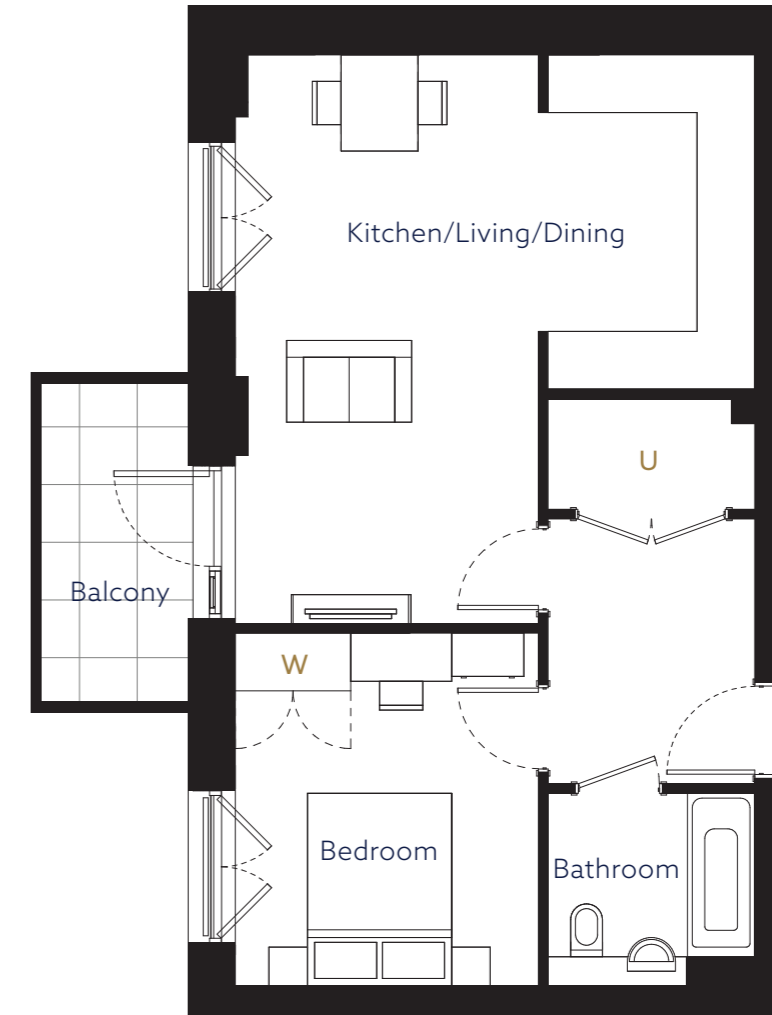
◀ NORTH PLOT LOCATOR



Floor plans are not to scale and are indicative only. Location of windows, doors, bathroom fittings, kitchen units and appliances may differ. Dimensions given are approximate and should not be used to order carpets or furniture. External area sizes and locations may differ from those illustrated.

**ONE BEDROOM**

PLOTS: 77 (SECOND), 84 (THIRD), 91 (FOURTH), 98 (FIFTH) AND 105 (SIXTH)

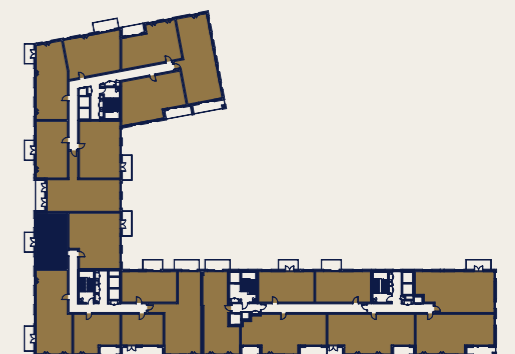


◀ NORTH

U Utility Cupboard | W Wardrobe

ROOM	METRIC	IMPERIAL
Kitchen/Living/Dining	5.91 x 5.41	19' 4" x 17' 8"
Bedroom	3.66 x 3.15	12' 0" x 10' 4"
Bathroom	2.00 x 2.15	6' 6" x 7' 5"
<b>TOTAL</b>	<b>52m<sup>2</sup></b>	<b>559ft<sup>2</sup></b>

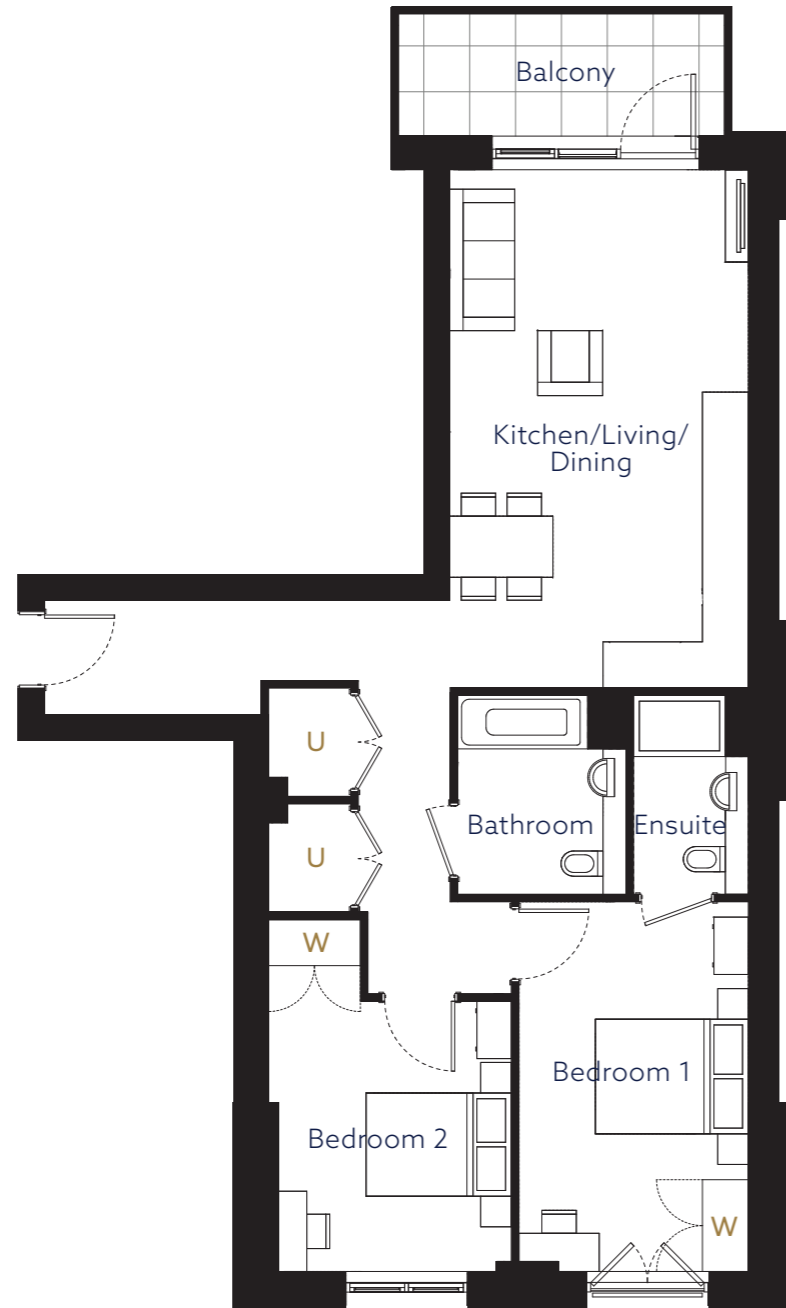
◀ NORTH PLOT LOCATOR



Floor plans are not to scale and are indicative only. Location of windows, doors, bathroom fittings, kitchen units and appliances may differ. Dimensions given are approximate and should not be used to order carpets or furniture. External area sizes and locations may differ from those illustrated.

## TWO BEDROOM

PLOTS: 73 (SECOND),  
 80 (THIRD), 87 (FOURTH)  
 AND 94 (FIFTH)

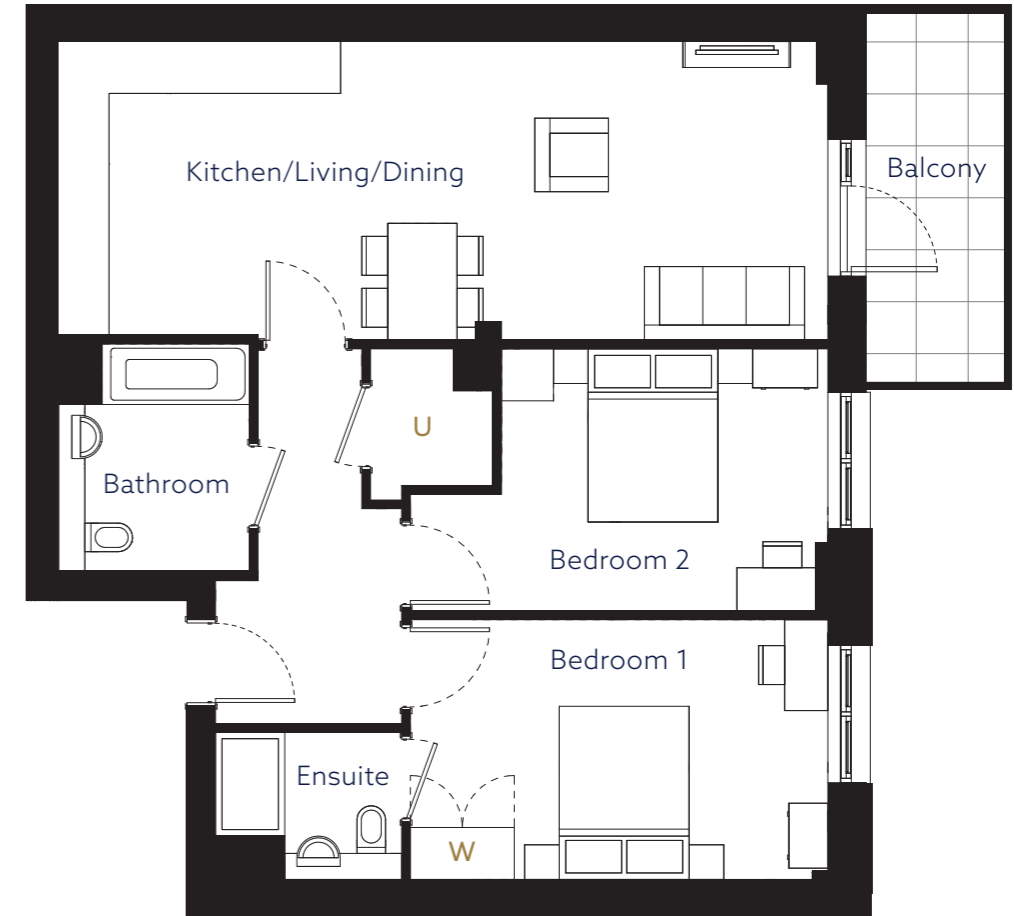


◀ NORTH

U Utility Cupboard | W Wardrobe

## TWO BEDROOM

PLOTS: 78 (SECOND), 85 (THIRD), 92 (FOURTH), 99 (FIFTH) AND 106 (SIXTH)

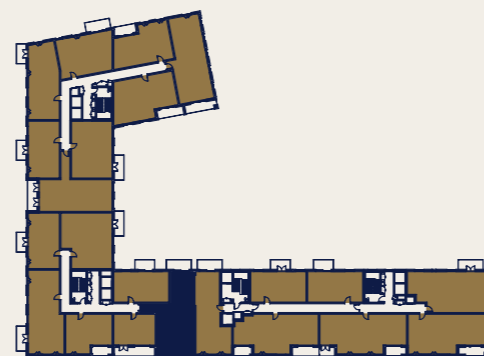


◀ NORTH

U Utility Cupboard | W Wardrobe

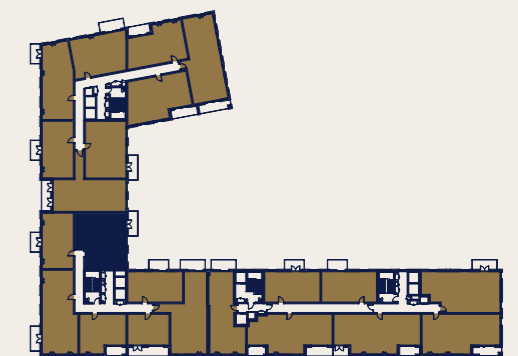
ROOM	METRIC	IMPERIAL
Kitchen/Living/Dining	6.77 x 3.90	22' 2" x 12' 9"
Bedroom 1	4.83 x 3.00	15' 10" x 9' 10"
Bedroom 2	3.63 x 3.17	11' 10" x 10' 4"
Bathroom	2.60 x 2.20	8' 6" x 7' 2"
<b>TOTAL</b>	<b>81m<sup>2</sup></b>	<b>871ft<sup>2</sup></b>

◀ NORTH PLOT LOCATOR

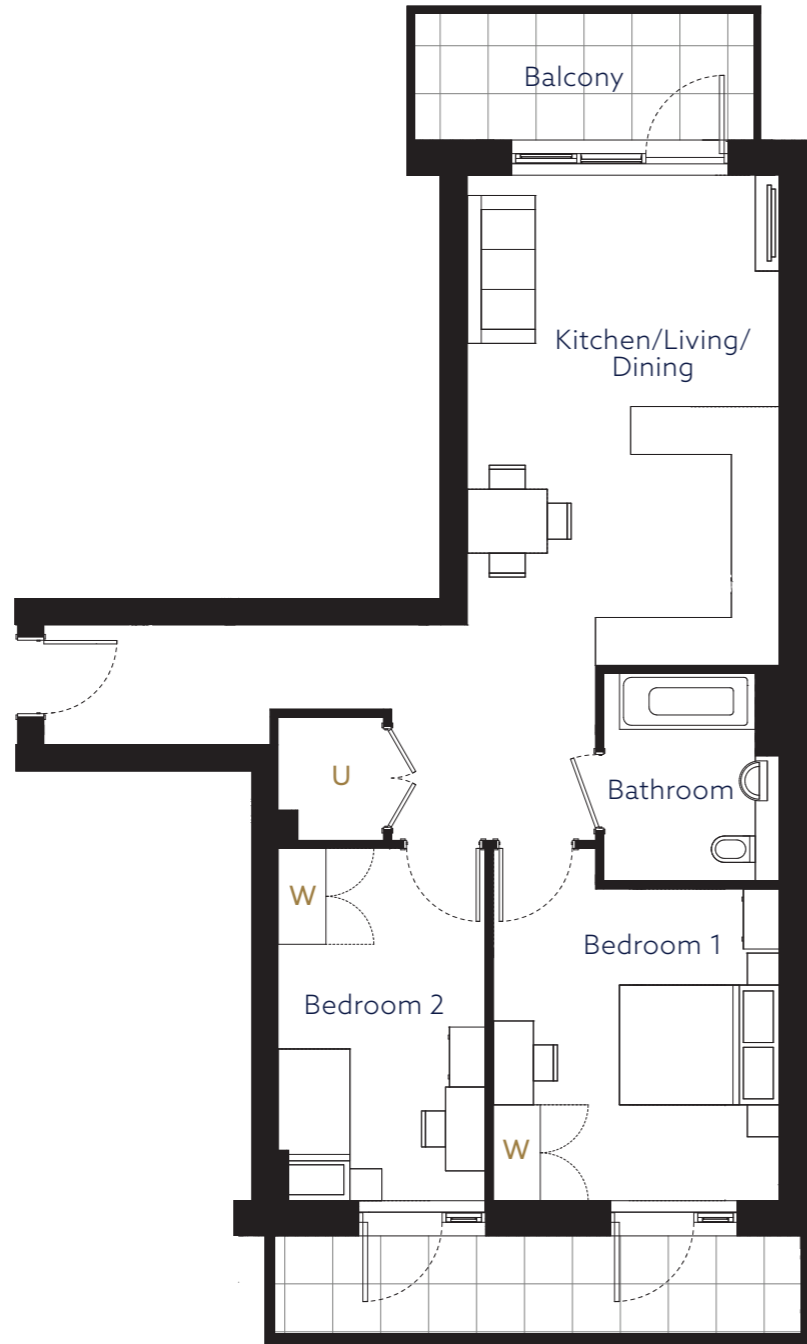


ROOM	METRIC	IMPERIAL
Kitchen/Living/Dining	3.45 x 8.90	11' 3" x 29' 2"
Bedroom 1	3.00 x 4.82	9' 10" x 15' 9"
Bedroom 2	3.02 x 4.82	9' 10" x 15' 9"
Bathroom	2.63 x 2.22	8' 7" x 7' 3"
<b>TOTAL</b>	<b>79m<sup>2</sup></b>	<b>861ft<sup>2</sup></b>

◀ NORTH PLOT LOCATOR



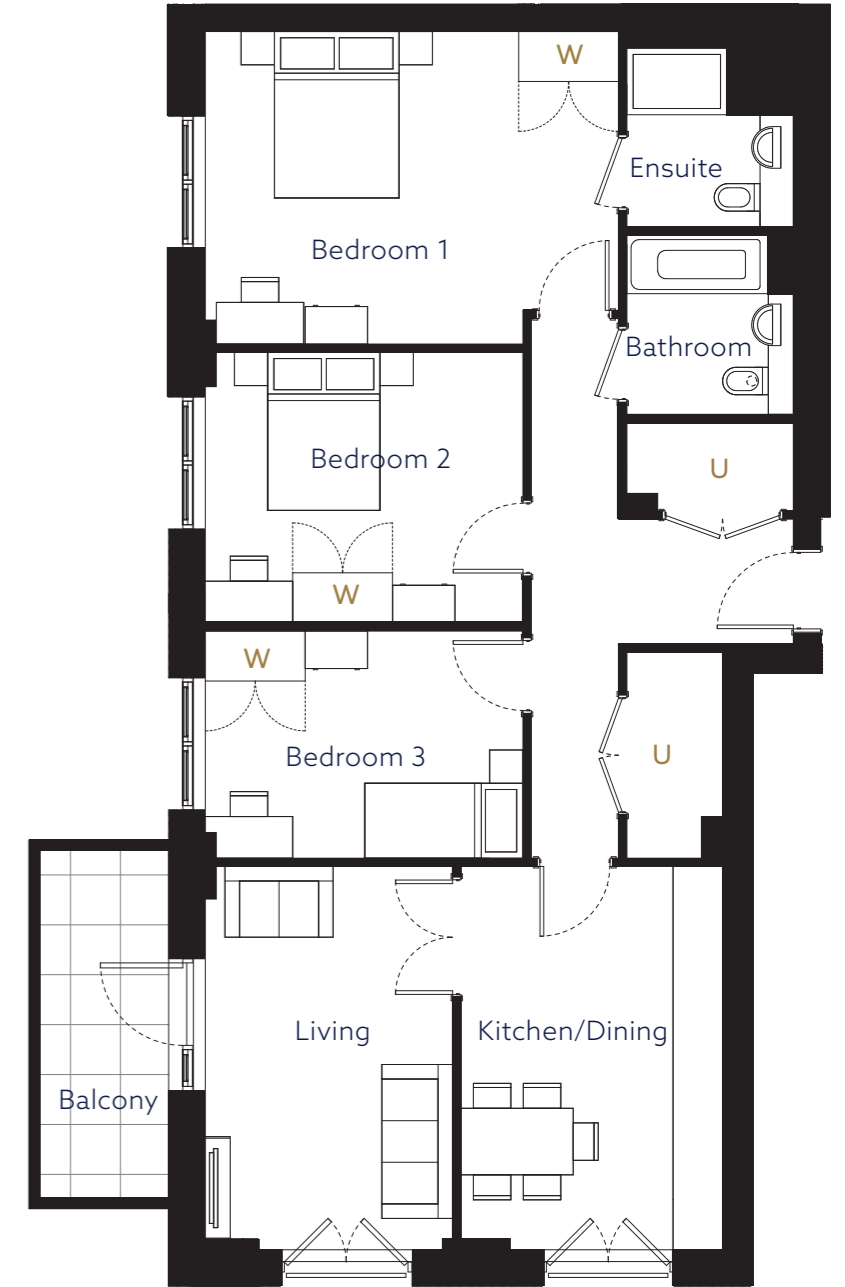
**TWO BEDROOM**  
 PLOT: 101 (SIXTH)



◀ NORTH

U Utility Cupboard | W Wardrobe

**THREE BEDROOM**  
 PLOT: 71 (FIRST)

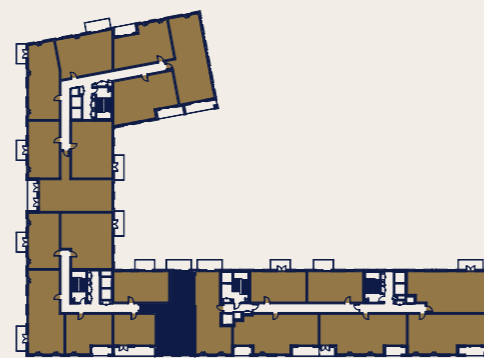


◀ NORTH

U Utility Cupboard | W Wardrobe

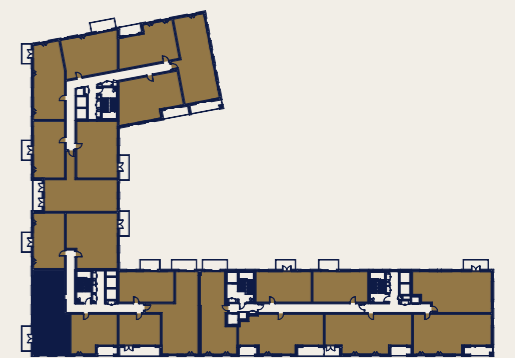
ROOM	METRIC	IMPERIAL
Kitchen/Living/Dining	6.13 x 3.90	20' 1" x 12' 9"
Bedroom 1	3.90 x 3.67	12' 9" x 12' 0"
Bedroom 2	3.90 x 2.59	12' 9" x 8' 5"
Bathroom	2.60 x 2.20	8' 6" x 7' 2"
<b>TOTAL</b>	<b>71m<sup>2</sup></b>	<b>775ft<sup>2</sup></b>

◀ NORTH PLOT LOCATOR



ROOM	METRIC	IMPERIAL
Kitchen/Dining	4.60 x 3.15	15' 1" x 10' 4"
Living	4.60 x 2.97	15' 1" x 9' 8"
Bedroom 1	3.85 x 4.96	12' 7" x 16' 3"
Bedroom 2	3.25 x 3.81	10' 7" x 12' 6"
Bedroom 3	2.72 x 3.81	8' 11" x 12' 6"
Bathroom	2.15 x 2.00	7' 0" x 6' 6"
<b>TOTAL</b>	<b>96m<sup>2</sup></b>	<b>1044ft<sup>2</sup></b>

◀ NORTH PLOT LOCATOR



Floor plans are not to scale and are indicative only. Location of windows, doors, bathroom fittings, kitchen units and appliances may differ. Dimensions given are approximate and should not be used to order carpets or furniture. External area sizes and locations may differ from those illustrated.

Floor plans are not to scale and are indicative only. Location of windows, doors, bathroom fittings, kitchen units and appliances may differ. Dimensions given are approximate and should not be used to order carpets or furniture. External area sizes and locations may differ from those illustrated.



SHARED OWNERSHIP AT  
**HEPWORTH PLACE**  
 WALTHAMSTOW

**THREE BEDROOM**

PLOTS: 76 (SECOND),  
 83 (THIRD), 90 (FOURTH),  
 97 (FIFTH) AND 104 (SIXTH)

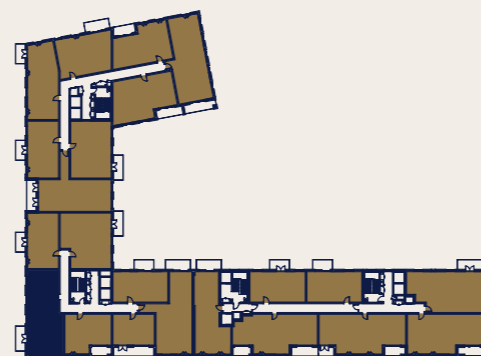


◀ NORTH

U Utility Cupboard | W Wardrobe

ROOM	METRIC	IMPERIAL
Kitchen/Dining	4.70 x 3.15	15' 5" x 10' 4"
Living	4.60 x 2.97	15' 1" x 9' 8"
Bedroom 1	3.75 x 3.15	12' 3" x 10' 4"
Bedroom 2	3.17 x 2.97	10' 4" x 9' 8"
Bedroom 3	2.80 x 2.97	9' 2" x 9' 8"
Bathroom	2.15 x 2.00	7' 0" x 6' 6"
<b>TOTAL</b>	<b>84m<sup>2</sup></b>	<b>1044ft<sup>2</sup></b>

◀ NORTH PLOT LOCATOR



Floor plans are not to scale and are indicative only. Location of windows, doors, bathroom fittings, kitchen units and appliances may differ. Dimensions given are approximate and should not be used to order carpets or furniture. External area sizes and locations may differ from those illustrated.



FIND OUT MORE  
Scan the code



CALL  
0208 821 4897

