



Cable Wharf

A COLLECTION OF 2 BEDROOM
APARTMENTS AND 3 AND 4
BEDROOM HOUSES IN NORTHFLEET



Welcome to the latest phase of Cable Wharf

A contemporary collection of 2 bedroom apartments and 3 and 4 bedroom houses available with Shared Ownership. Set within the unique backdrop of ancient chalk cliffs and the glistening River Thames, yet only 24 minutes* from London St Pancras via a direct train from Gravesend. Cable Wharf is an ideal location for those who want riverside living within easy reach of the City.

*Train time taken from www.nationalrail.co.uk and are approximate only.



Everything you need, right where you are

Cable Wharf resides in Northfleet, just a stone's throw from the Thames Estuary, and less than a mile* from Gravesend while also in close proximity to Dartford. Commuters attracted to the development will enjoy high speed connections to the capital thanks to the nearby Gravesend train station, and likewise, the A2 is a short drive away, ensuring ready access to London and the East of the county.

As well as Northfleet's range of amenities, visit historic Gravesend.

The town has a diverse range of independent eateries, historic landmarks, and a traditional pub scene. For sporting buffs, Ebbsfleet United is a short stroll. Cyclopark in Gravesend is the perfect spot for adventurous types who enjoy a mountain bike trail while the skatepark is perfect for spending quality family time.

For lovers of the great outdoors, the nearby Shorne Woods Country Park has nearly 300 acres of woodlands, wetlands, and meadows to explore. Get away from the hustle and bustle with a trail run, dog walk or even geocaching and orienteering!



*Distance taken from www.google.co.uk/maps and are approximate only.



Please note: All CGIs, floor plans, configurations, maps and information are intended for guidance only and accuracy of this information cannot be relied upon by prospective purchasers who must make their own enquiries to satisfy themselves by inspection or otherwise as to the correct detail, including individual plot plans and colours. Sizes and dimensions are approximate and subject to change. Correct at time of print – December 2024.

PLOT 32

The Kentish

3 BEDROOM HOME
119.01 sq.m / 1,281 sq.ft

Cable Wharf



PLOT 32

The Kentish

3 BEDROOM HOME
119.01 sq.m / 1,281 sq.ft



GROUND FLOOR

FIRST FLOOR

SECOND FLOOR

ST: Store **WC:** Water Closet

GROUND FLOOR	m	ft
Kitchen/Dining	4.51m x 3.01m	14'10" x 9'10"
Living	4.35m x 3.56m	14'3" x 11'8"

FIRST FLOOR	m	ft
Bedroom 2	4.51m x 3.01m	14'10" x 9'10"
Bedroom 3	3.40m x 2.47m	11'2" x 8'1"
Bathroom	2.47m x 2.15m	8'1" x 7'1"

SECOND FLOOR	m	ft
Bedroom 1	5.29m x 4.51m	17'4" x 14'10"
Dressing Area	3.50m x 2.15m	11'6" x 7'1"
En-suite	3.39m x 2.25m	11'1" x 7'5"

This floorplan is indicative of this house type only and does not reflect plot specific variations. Any and all such variations, for example additional windows, are shown on plot specific drawings for this development. Please speak to our sales consultant for details. Computer generated images are a generic indication of a finished house type but are not specific to this development. External finishes, materials and appearance will vary, please refer to plot specific drawing and information in sales office.

PLOTS 17, 20, 23, 26

The Thames

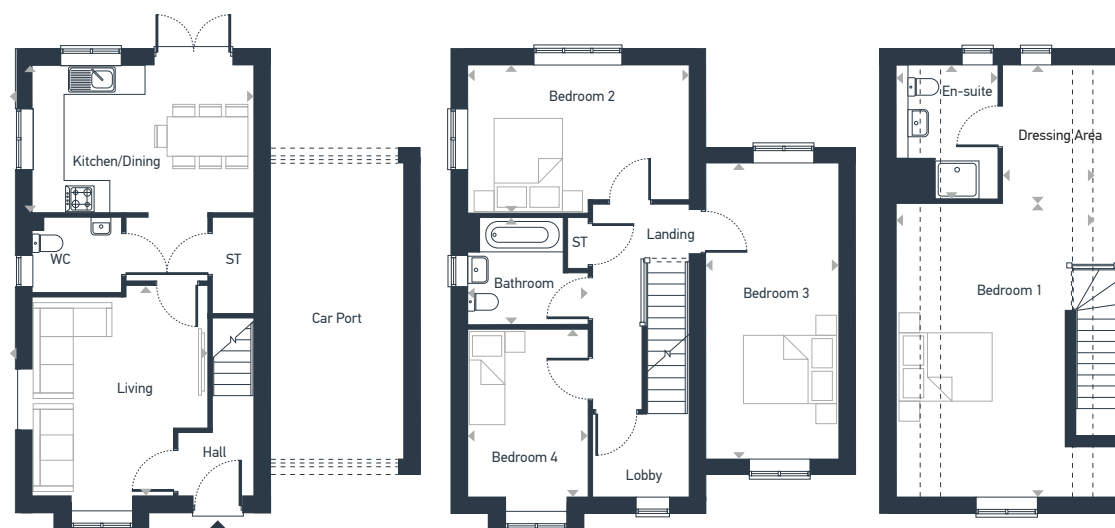
4 BEDROOM HOME
137.03 sq.m / 1,475 sq.ft

**Cable
Wharf**

PLOTS 17, 20, 23, 26

The Thames

4 BEDROOM HOME
137.03 sq.m / 1,475 sq.ft



GROUND FLOOR

FIRST FLOOR

SECOND FLOOR

ST: Store **WC:** Water Closet --- Reduced Head Height

GROUND FLOOR	m	ft
Kitchen/Dining	4.51m x 3.01m	14'10" x 9'10"
Living	4.35m x 3.56m	14'3" x 11'8"

FIRST FLOOR	m	ft
Bedroom 2	4.51m x 3.01m	14'10" x 9'10"
Bedroom 3	5.97m x 2.83m	19'7" x 9'4"
Bedroom 4	3.40m x 2.47m	11'2" x 8'1"
Bathroom	2.47m x 2.15m	8'1" x 7'1"

SECOND FLOOR	m	ft
Bedroom 1	5.95m x 4.51m	19'7" x 14'10"
Dressing Area	3.39m x 2.44m	11'1" x 8'0"
En-suite	3.39m x 2.44m	11'1" x 8'0"

This floorplan is indicative of this house type only and does not reflect plot specific variations. Any and all such variations, for example additional windows, are shown on plot specific drawings for this development. Please speak to our sales consultant for details. Computer generated images are a generic indication of a finished house type but are not specific to this development. External finishes, materials and appearance will vary, please refer to plot specific drawing and information in sales office.

PLOTS 28, 30, 31

The Hitchcock

3 BEDROOM HOME
119.01 sq.m / 1,281 sq.ft

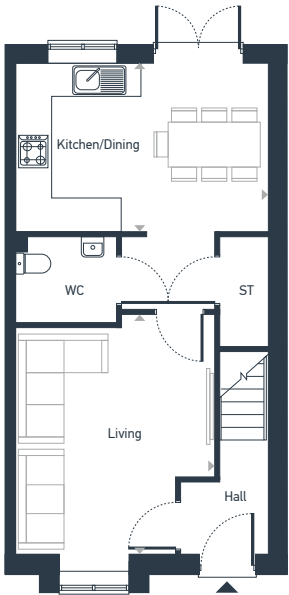
**Cable
Wharf**



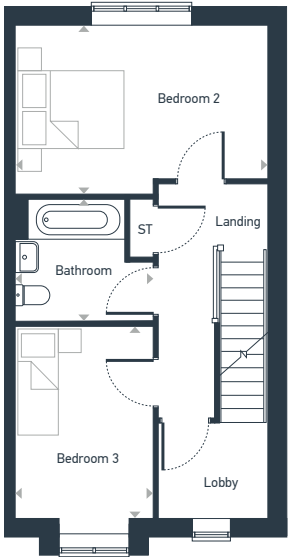
PLOTS 28, 30, 31

The Hitchcock

3 BEDROOM HOME
119.01 sq.m / 1,281 sq.ft



GROUND FLOOR



FIRST FLOOR



SECOND FLOOR

ST: Store **WC:** Water Closet --- Reduced Head Height

GROUND FLOOR	m	ft
Kitchen/Dining	4.51m x 3.01m	14'10" x 9'10"
Living	4.35m x 3.56m	14'3" x 11'8"

FIRST FLOOR	m	ft
Bedroom 2	4.51m x 3.01m	14'10" x 9'10"
Bedroom 3	3.40m x 2.47m	11'2" x 8'1"
Bathroom	2.47m x 2.15m	8'1" x 7'1"

SECOND FLOOR	m	ft
Bedroom 1	5.54m x 4.51m	18'2" x 14'10"
Dressing Area	3.50m x 2.15m	11'6" x 7'1"
En-suite	3.39m x 2.25m	11'1" x 7'5"

This floorplan is indicative of this house type only and does not reflect plot specific variations. Any and all such variations, for example additional windows, are shown on plot specific drawings for this development. Please speak to our sales consultant for details. Computer generated images are a generic indication of a finished house type but are not specific to this development. External finishes, materials and appearance will vary, please refer to plot specific drawing and information in sales office.

PLOTS 18, 19, 24, 25

The Baronial

4 BEDROOM HOME
125.98 sq.m / 1,356 sq.ft

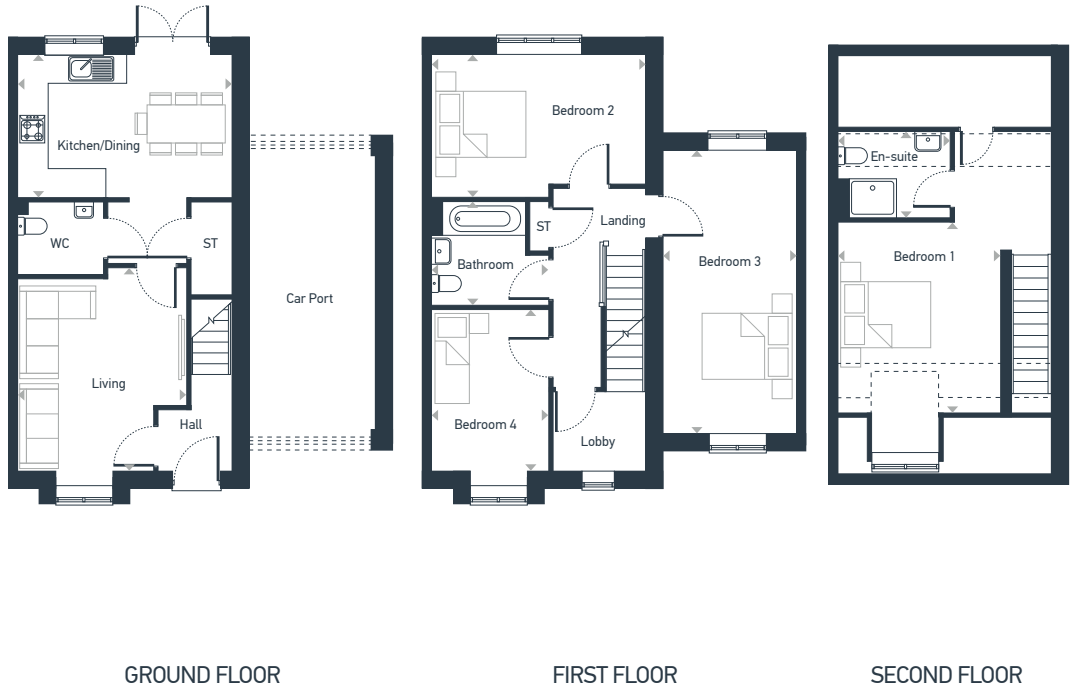
**Cable
Wharf**



PLOTS 18, 19, 24, 25

The Baronial

4 BEDROOM HOME
125.98 sq.m / 1,356 sq.ft



ST: Store **WC:** Water Closet --- Reduced Head Height

GROUND FLOOR	m	ft
Kitchen/Dining	4.51m x 3.01m	14'10" x 9'10"
Living	4.35m x 3.56m	14'3" x 11'8"

FIRST FLOOR	m	ft
Bedroom 2	4.51m x 3.01m	14'10" x 9'10"
Bedroom 3	5.98m x 2.83m	19'7" x 9'4"
Bedroom 4	3.40m x 2.47m	11'2" x 8'1"
Bathroom	2.47m x 2.15m	8'1" x 7'1"

SECOND FLOOR	m	ft
Bedroom 1	5.54m x 4.51m	18'2" x 14'10"
En-suite	2.35m x 1.80m	7'9" x 5'11"

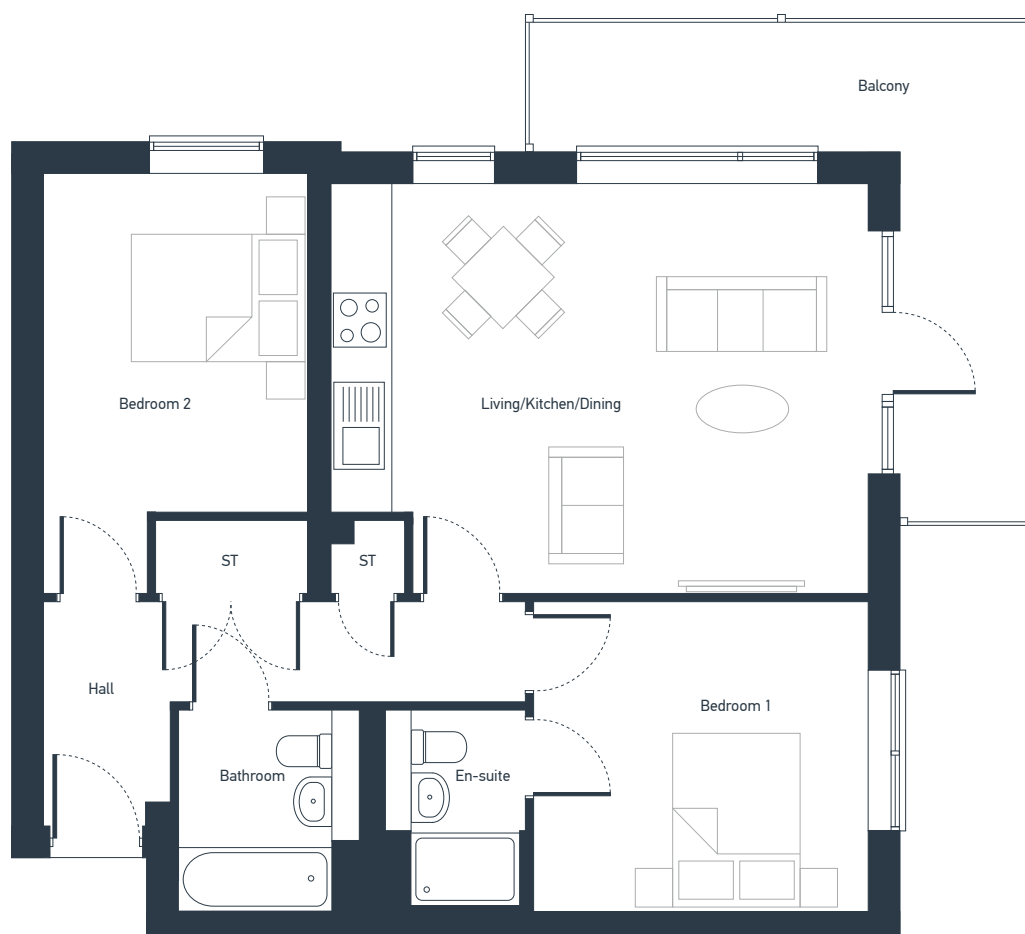
This floorplan is indicative of this house type only and does not reflect plot specific variations. Any and all such variations, for example additional windows, are shown on plot specific drawings for this development. Please speak to our sales consultant for details. Computer generated images are a generic indication of a finished house type but are not specific to this development. External finishes, materials and appearance will vary, please refer to plot specific drawing and information in sales office.

Brunswick Heights

2 BEDROOM APARTMENTS

**Cable
Wharf**





ST: Store

PLOTS AS DRAWN 254, 260, 266, 281
HANDED 259, 280, 286

Type 2A - Type 1

2 BEDROOM APARTMENT
71.10 sq.m / 765.32 sq.ft

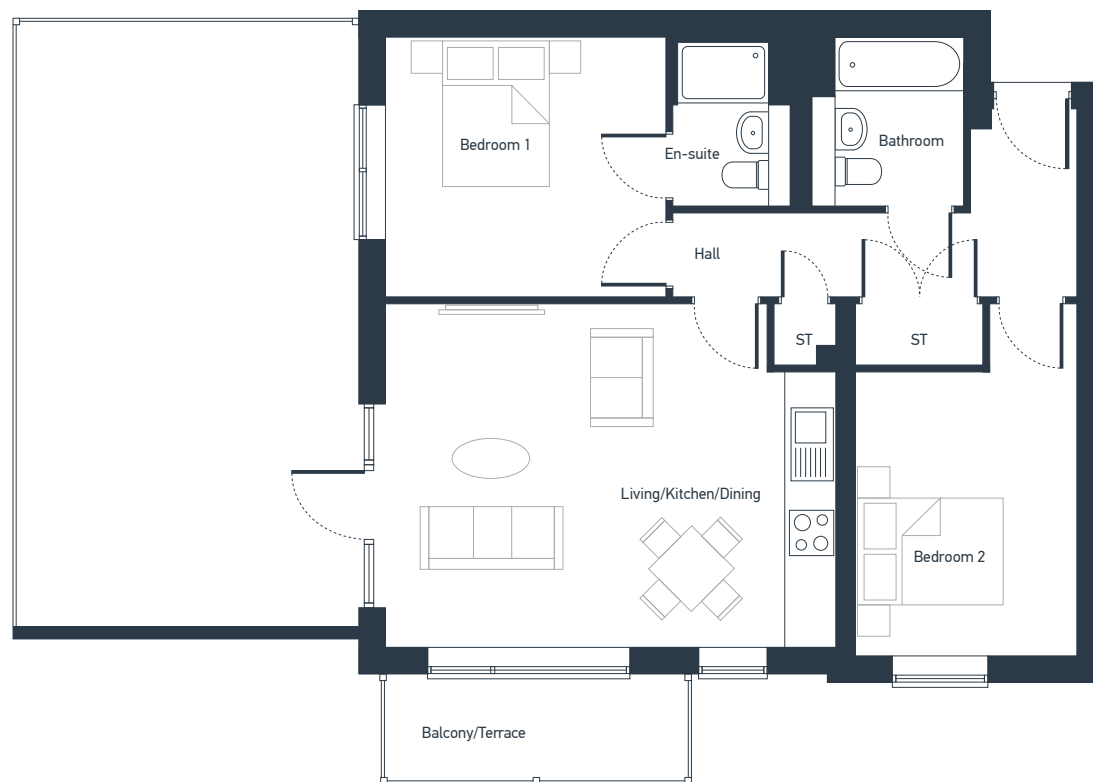
DIMENSIONS	m	ft
Living/Dining/Kitchen	6.10m x 4.51m	19'9" x 14'8"
Bedroom 1	3.82m x 3.39m	12'6" x 11'1"
En-suite	2.19m x 1.59m	7'2" x 5'2"
Bedroom 2	4.51m x 2.89m	14'8" x 9'5"
Bathroom	2.19m x 2.03m	7'2" x 6'6"

This floorplan is indicative of this house type only and does not reflect plot specific variations. Any and all such variations, for example additional windows, are shown on plot specific drawings for this development. Please speak to our sales consultant for details. Computer generated images are a generic indication of a finished house type but are not specific to this development. External finishes, materials and appearance will vary, please refer to plot specific drawing and information in sales office.

PLOTS AS DRAWN 281
HANDED 280

Type 2A - Type 2

2 BEDROOM APARTMENT
71.10 sq.m / 765.32 sq.ft



ST: Store

DIMENSIONS	m	ft
Living/Kitchen/Dining	6.10m x 4.51m	19'9" x 14'8"
Bedroom 1	3.82m x 3.39m	12'6" x 11'1"
En-suite	2.19m x 1.59m	7'2" x 5'2"
Bedroom 2	4.51m x 2.89m	14'8" x 9'5"
Bathroom	2.19m x 2.03m	7'2" x 6'6"



PLOTS AS DRAWN 257, 263, 269
HANDED 256, 262, 268, 274

Type 2B

2 BEDROOM APARTMENT
70.10 sq.m / 754.56 sq.ft

DIMENSIONS	m	ft
Living/Kitchen/Dining	8.00m x 3.35m	26'3" x 11'0"
Bedroom 1	4.77m x 3.35m	15'6" x 11'0"
En-suite	2.19m x 1.54m	7'2" x 5'0"
Bedroom 2	4.71m x 2.65m	15'6" x 8'7"
Bathroom	2.24m x 2.23m	7'3" x 7'3"

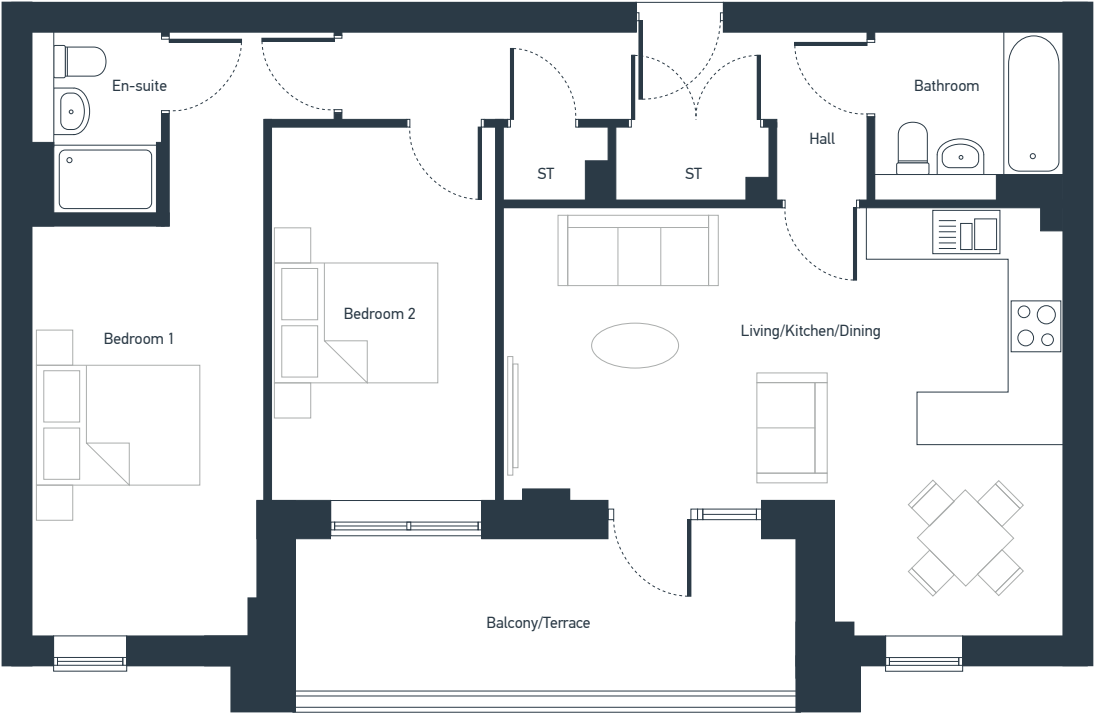
ST: Store

This floorplan is indicative of this house type only and does not reflect plot specific variations. Any and all such variations, for example additional windows, are shown on plot specific drawings for this development. Please speak to our sales consultant for details. Computer generated images are a generic indication of a finished house type but are not specific to this development. External finishes, materials and appearance will vary, please refer to plot specific drawing and information in sales office.

PLOTS AS DRAWN 267, 279, 285

Type 2D

2 BEDROOM APARTMENT
75.20 sq.m / 809.45 sq.ft



ST: Store

DIMENSIONS	m	ft
Living/Kitchen/Dining	6.56m x 4.98m	21'5" x 16'3"
Bedroom 1	7.07m x 3.51m	23'2" x 11'5"
En-suite	2.20m x 1.49m	7'2" x 4'9"
Bedroom 2	4.71m x 2.65m	15'6" x 8'7"
Bathroom	2.25m x 1.90m	7'4" x 6'2"

This floorplan is indicative of this house type only and does not reflect plot specific variations. Any and all such variations, for example additional windows, are shown on plot specific drawings for this development. Please speak to our sales consultant for details. Computer generated images are a generic indication of a finished house type but are not specific to this development. External finishes, materials and appearance will vary, please refer to plot specific drawing and information in sales office.

Specification

**Cable
Wharf**



Cable Wharf, Northfleet Apartment & Home Specification

Kitchen

- Kitchens by Symphony
- Soft close drawers
- Laminate work surfaces with matching upstands
- Single bowl stainless steel sink with chrome mixer tap
- Single oven
- Extractor hood
- Dishwasher
- Fridge freezer
- Washing machine

Plumbing And Heating

- Heated towel rails

Electrical

- Mains smoke and heat detectors
- Low energy lighting throughout
- White electrical fittings in all rooms

Internal Finishes

- Ceilings and walls finished in white paint
- All woodwork finished in white gloss paint
- Vinyl to kitchen, WC and bathroom and en-suite
- Carpet in all other rooms
- Internal doors, 5 panel vertical with white finish and chrome handles

Bathrooms and En-Suites

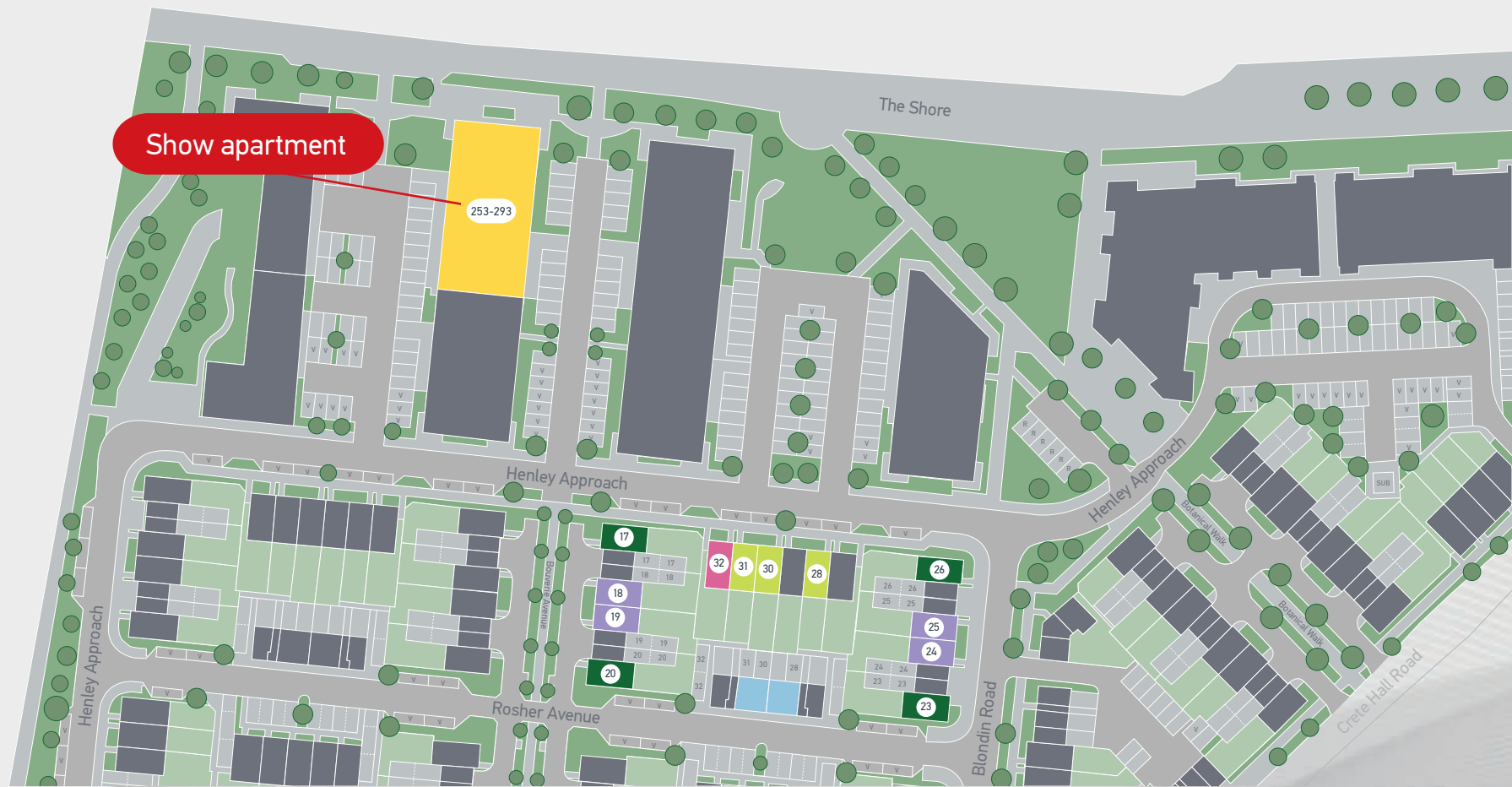
- White Twyford sanitaryware
- Basin with pedestal in en-suite & bathroom
- Bristan mixer tap to all basins
- Thermostatic shower handset
- Wall tile splashback to the en-suite basin

External

- Video entry system (to apartments)
- Low energy security light
- Front door timber framed with multi-point locking
- Four-panel grained semi-solid door
- Door furniture in polished chrome

Please note: The specifications outlined above are for indication purposes only. There may be changes throughout the build process to specific brand, materials and appliances referred to in the specification. In such cases, an alternative of similar quality will be provided. Any alterations of the specification will be of equal to or greater value, and Places for People reserve the right to implement changes to the specification without warning. This information is for guidance only and does not form any part of any contract or constitute a warranty. Please consult your Sales Executive for further information.





Cable Wharf

Flat 2 Brunswick Heights, 14 Henley Approach, Northfleet, Kent, DA11 9FX

07557 499 020

placesforpeople.co.uk/cablewharf

Book your appointment at:

southeastsales@placesforpeople.co.uk

Cable Wharf



Although every care has been taken to ensure the accuracy of the information provided within this brochure, the contents do not form part of or constitute any representation, warranty or contractual agreement. These particulars have been prepared for the convenience of interested purchasers, and the information provided is intended as a preliminary guide only and should not be relied upon as statements or representations of facts. The computer generated images and photography used within this brochure are provided for illustrative purposes only and may not reflect the actual size, layout and internal or external finish of the completed units. We regret that we cannot accept responsibility for error or misdescription, and the specification shall not form any part of the contract. Please refer to the sales executive for details of the plot of your choice.