

# Welcome to Kings Meadow

Falfield, Gloucestershire, GL12 8DH

A collection of two and three  
bedroom Shared Ownership homes.



[bromfordhomes.co.uk/kingsmeadow](https://bromfordhomes.co.uk/kingsmeadow)

## On your doorstep

Nestled in the historical, picturesque village of Falfield, King's Meadow exclusively offers a beautifully designed 2-bedroom and 3-bedroom home. Surrounded by scenic countryside, King's Meadow is the perfect peaceful retreat from the well-connected nearby towns.



**Thornbury  
Hospital**  
4 miles



**Tesco  
Superstore**  
8 miles



**M5  
Junction 14**  
1 mile

### Local area connection

To meet the needs of local people most of our homes for sale require a local connection to the area. The connection criteria varies between sites, but generally it's based on:

- Being a resident (or employed within) the area for a number of years (usually between 2 to 5)
- Family connections – for example, parent, grandparent, child, grandchild or adult sibling – who have lived in the area for at least three years

**There is no local area connection  
requirements for these homes.**

If you need any more information, please speak to one of our helpful Sales Consultants.

We follow Homes England Guidelines on First Come, First Served policies for Shared Ownership homes. Please visit [our policies page](#) for full policy details

**Bromford.**  
Shared Ownership

# Kings Meadow

Falfield, Gloucestershire, GL12 8DH



- A** The Yarrow  
2 bed home
- B** The Marigold  
3 bed home
- Bromford  
rented home
- Cotswold  
Homes



Plot 10

# The Yarrow

## 2 bedroom home



2 bedrooms



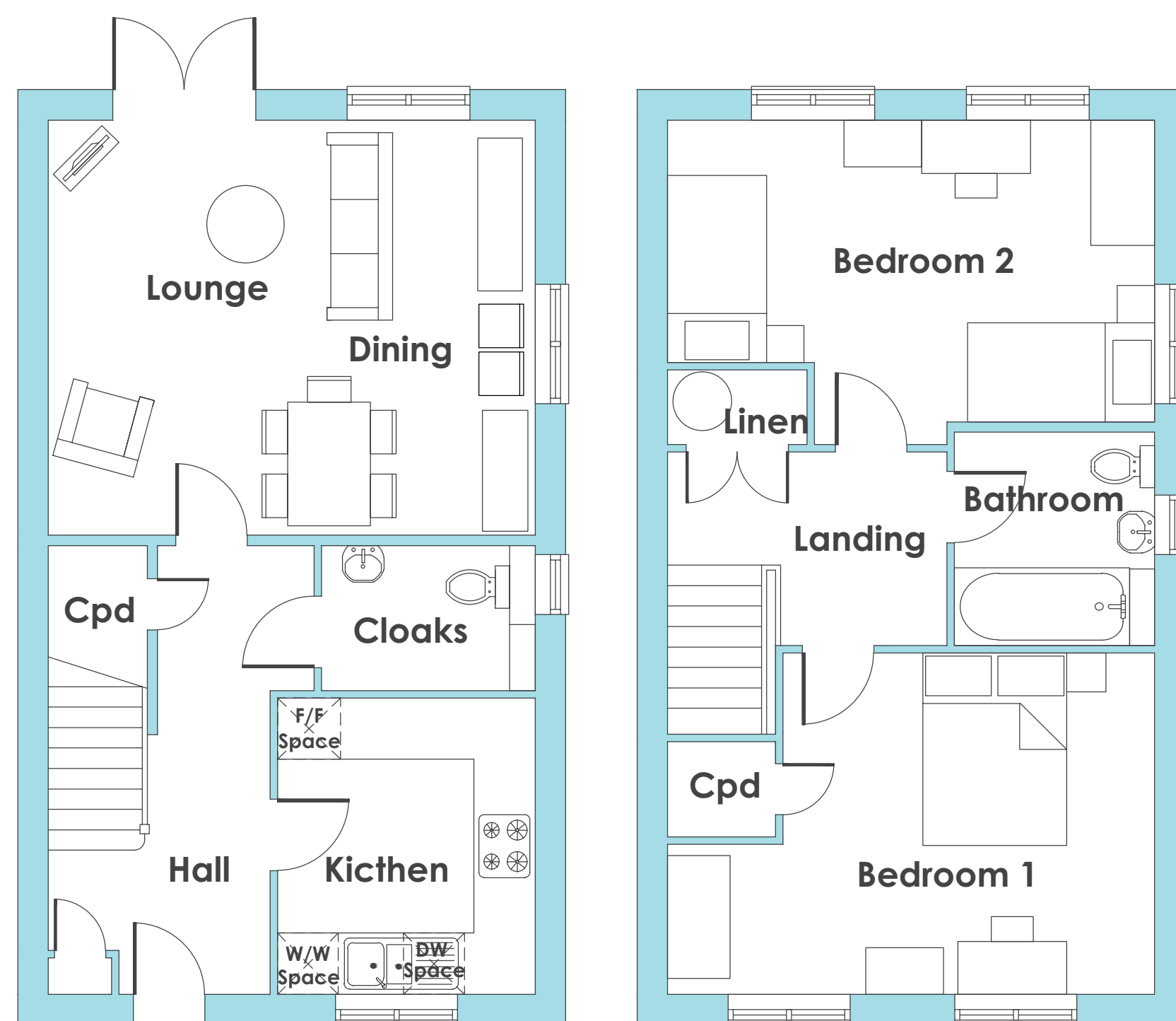
Energy  
efficient



Turf to rear  
garden



10 Year NHBC  
warranty



### Ground floor

#### Kitchen

2.90m x 2.52m / 9'6" x 8'3"

#### Lounge / Dining

4.77m x 4.06m / 15'8" x 13'4"

### First floor

#### Bedroom 1

4.77m x 3.34m / 15'8" x 11'0"

#### Bedroom 2

4.77m x 2.95m / 15'8" x 9'8"



- Energy-efficient home
- Open-plan lounge/diner
- Wrap-around kitchen
- Integrated cooker, hob & extractor hood
- French doors to private garden
- Guest cloakroom
- Useful storage
- Parking for two cars

Plot 5

# The Marigold

## 3 bedroom home



3 bedrooms



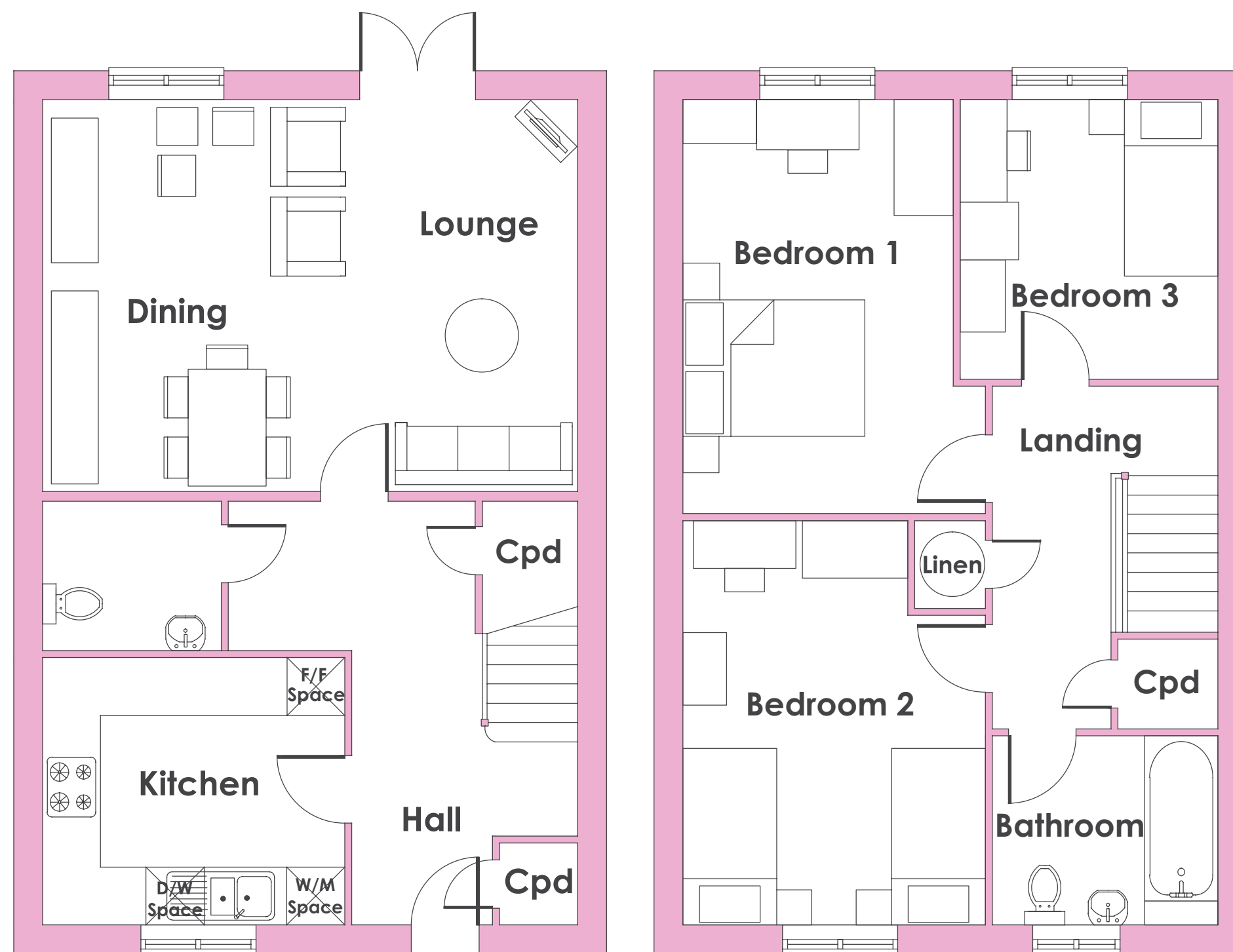
Energy  
efficient



Turf to rear  
garden



10 Year NHBC  
warranty



### Ground floor

#### Lounge / Dining

5.54m x 4.06m / 18'2" x 13'4"

#### Kitchen

3.13m x 2.77m / 10'3" x 9'1"

### First floor

#### Bedroom 1

4.29m x 2.79m / 14'1" x 9'2"

#### Bedroom 2

4.20m x 3.13m / 13'9" x 10'3"

#### Bedroom 3

2.90m x 2.67m / 9'6" x 8'9"



- Energy-efficient home
- Open-plan lounge/diner
- Wrap-around kitchen
- Integrated cooker, hob & extractor hood
- French doors to private garden
- Guest cloakroom
- Useful storage
- Parking for two cars





## Who are we?

Since 1963 we have been providing customers with new and affordable homes. We want all of our customers to thrive and believe that with the right homes and someone who believes in their potential, almost anything is possible - with Bromford Shared Ownership we're helping more people than ever before to realise their dreams of owning their home.

Where does my money go when I buy a Bromford home? As a registered charity through the FCA registered societies, all the money Bromford makes goes back into the communities we work in and helps the people we work with thrive for a better safer life.



Shannon Way,  
Ashchurch,  
Tewkesbury,  
GL20 8ND

0800 0852 499  
[sales@bromford.co.uk](mailto:sales@bromford.co.uk)  
[bromfordhomes.co.uk](http://bromfordhomes.co.uk)



Follow us on TikTok

Visit the Home Ownership Hub to find  
out more about your new home  
[bromfordhomes.co.uk/home-ownership-hub](http://bromfordhomes.co.uk/home-ownership-hub)



Bromford abides by the Consumer Protection  
from Unfair Trading Regulations 2008



**Bromford.**  
Shared Ownership