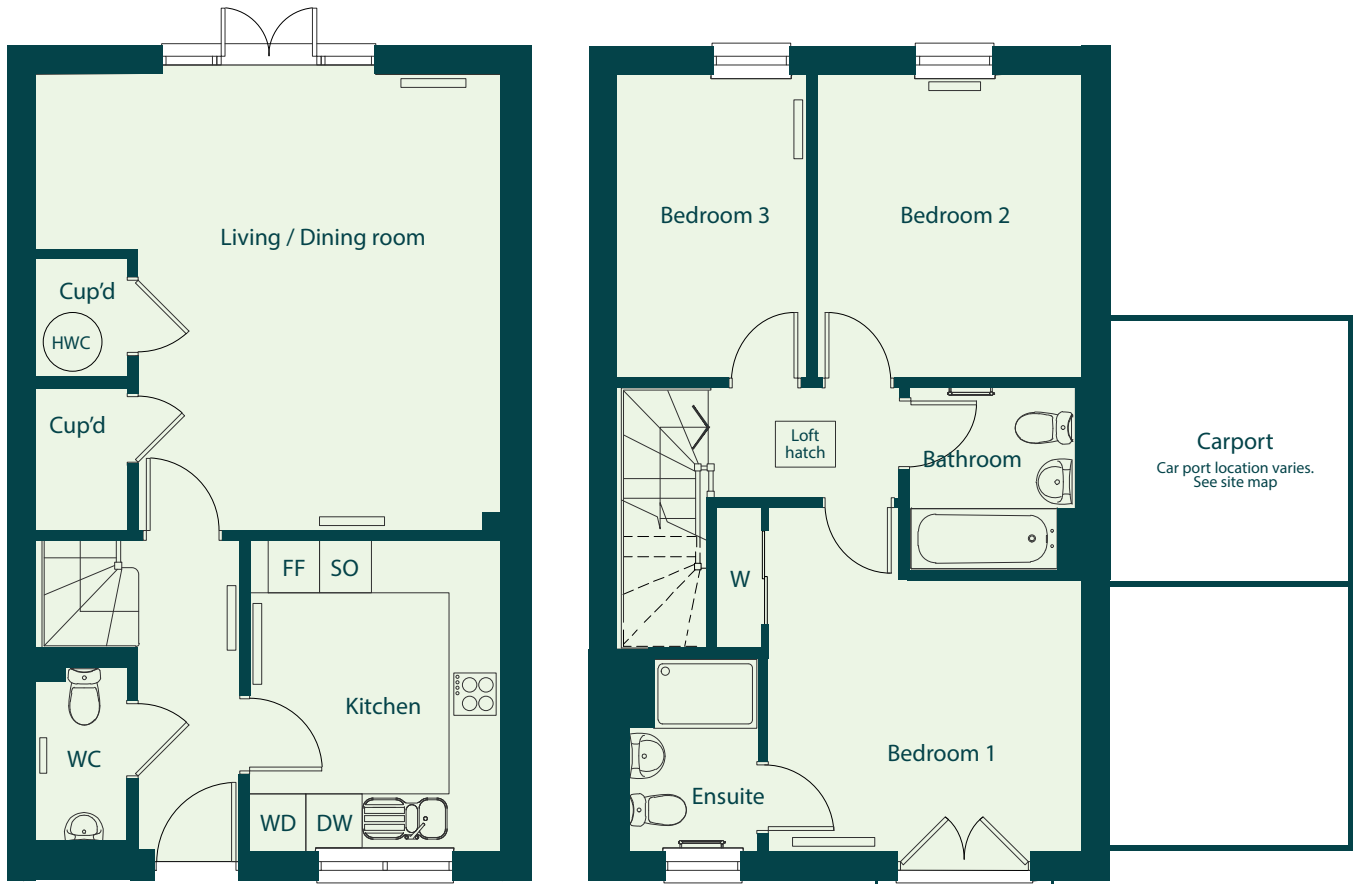


Plot
145

MOAT AT ALKERDEN EDGE

The Heron

Three bedroom semi-detached house
97 Colyer Drive, Ebbsfleet Valley, Kent, DA10 1GT



Total Internal Area	96 sqm
Kitchen	2.9m x 3.5m
Living / dining room	5.3m x 5.2m
Bedroom 1	3.6m x 3.9m
Bedroom 2	3m x 3.5m
Bedroom 3	2.1m x 3.5m

Energy Efficiency Rating	Environmental Impact (CO ₂) Rating
<p>87</p>	<p>97</p>
<p>England</p> <p>EU Directive 2002/91/EC</p>	<p>England</p> <p>EU Directive 2002/91/EC</p>

Cup'd = Cupboard, WC = Water Closet, SO = Single Oven, FF = Fridge Freezer, DW = Dishwasher, WD = Washer Dryer, W = Built in Wardrobe, HWC = Hot Water Cylinder

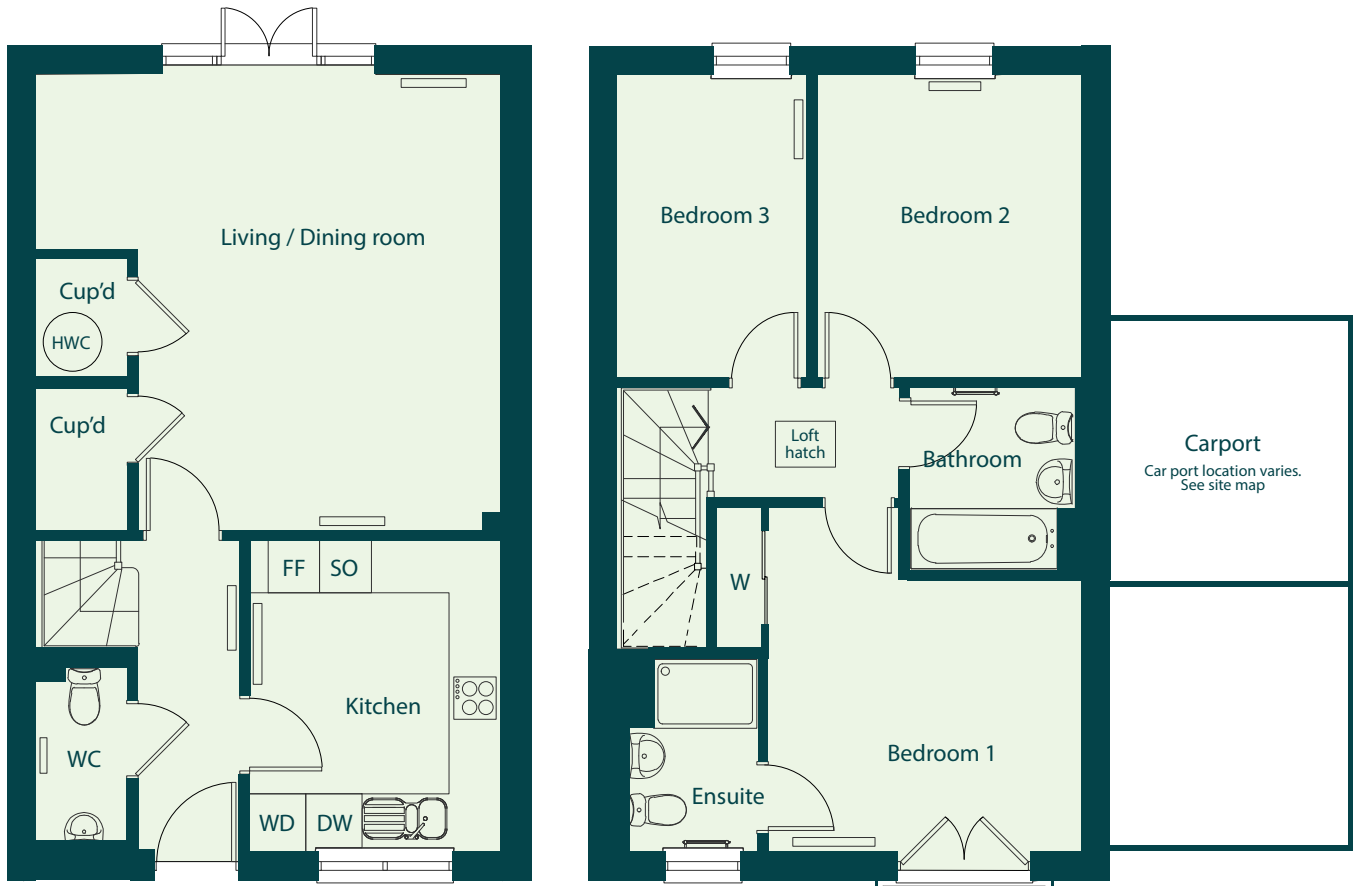
The plans are illustrative only and should be used as so by prospective buyers. All room sizes are approximate with maximum dimensions of finished measurements. Kitchen and bathroom layouts are indicative and subject to change. Dimensions should not be relied upon for carpet sizes, appliance sizes or items of furniture. Ceiling height may vary within select homes. Whilst every attempt has been made to ensure the accuracy of these floor plans, the information contained herein is a preliminary guide only and Moat take no responsibility for error, omission, or misstatement. Moat reserves the right to make changes to these plans prior to exchange of contracts. The information contained within this document does not constitute part of any offer, contract, or warranty. Please speak to the sales team for more information.

Moathomes

Plot
149

MOAT AT
ALKERDEN
EDGE

The Heron
Three bedroom semi-detached house
89 Colyer Drive, Ebbsfleet Valley, Kent, DA10 1GT



Total Internal Area	96 sqm
Kitchen	2.9m x 3.5m
Living / dining room	5.3m x 5.2m
Bedroom 1	3.6m x 3.9m
Bedroom 2	3m x 3.5m
Bedroom 3	2.1m x 3.5m

Energy Efficiency Rating	Environmental Impact (CO ₂) Rating
<p>87</p>	<p>97</p>
<p>England</p> <p>EU Directive 2002/91/EC</p>	<p>England</p> <p>EU Directive 2002/91/EC</p>

Cup'd = Cupboard, WC = Water Closet, SO = Single Oven, FF = Fridge Freezer, DW = Dishwasher, WD = Washer Dryer, D = Tumble Dryer, W = Built in Wardrobe, HWC = Hot Water Cylinder

The plans are illustrative only and should be used as so by prospective buyers. All room sizes are approximate with maximum dimensions of finished measurements. Kitchen and bathroom layouts are indicative and subject to change. Dimensions should not be relied upon for carpet sizes, appliance sizes or items of furniture. Ceiling height may vary within select homes. Whilst every attempt has been made to ensure the accuracy of these floor plans, the information contained herein is a preliminary guide only and Moat take no responsibility for error, omission, or misstatement. Moat reserves the right to make changes to these plans prior to exchange of contracts. The information contained within this document does not constitute part of any offer, contract, or warranty. Please speak to the sales team for more information.

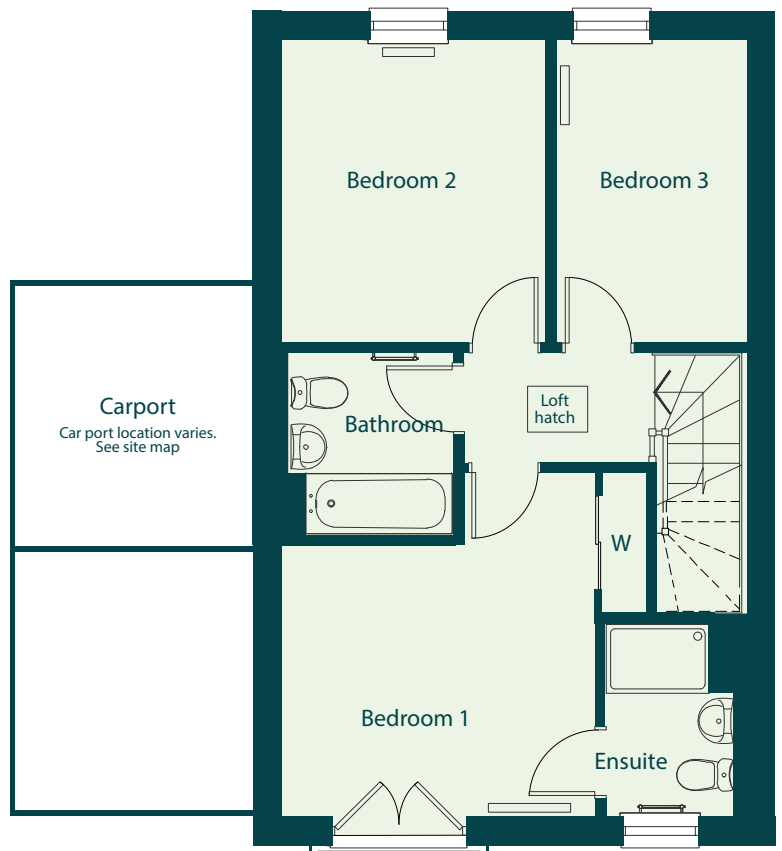
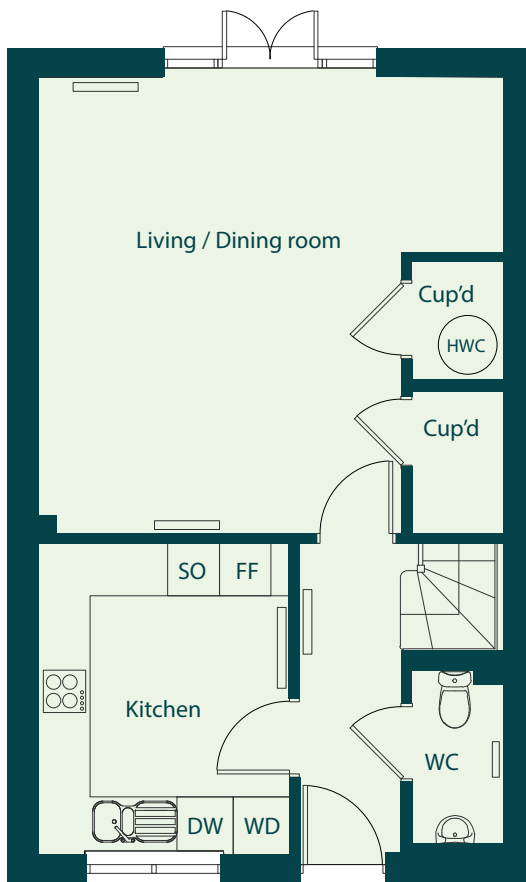
Moathomes

Plot
146

MOAT AT ALKERDEN EDGE

The Heron

Three bedroom semi-detached house
95 Colyer Drive, Ebbsfleet Valley, Kent, DA10 1GT



Total Internal Area	96 sqm
Kitchen	2.9m x 3.5m
Living / dining room	5.3m x 5.2m
Bedroom 1	3.6m x 3.9m
Bedroom 2	3m x 3.5m
Bedroom 3	2.1m x 3.5m

Energy Efficiency Rating	Environmental Impact (CO ₂) Rating
<p>87</p>	<p>97</p>
<p>England</p> <p>EU Directive 2002/91/EC</p>	<p>England</p> <p>EU Directive 2002/91/EC</p>

Cup'd = Cupboard, WC = Water Closet, SO = Single Oven, FF = Fridge Freezer, DW = Dishwasher, WD = Washer Dryer, W = Built in Wardrobe, HWC = Hot Water Cylinder

The plans are illustrative only and should be used as so by prospective buyers. All room sizes are approximate with maximum dimensions of finished measurements. Kitchen and bathroom layouts are indicative and subject to change. Dimensions should not be relied upon for carpet sizes, appliance sizes or items of furniture. Ceiling height may vary within select homes. Whilst every attempt has been made to ensure the accuracy of these floor plans, the information contained herein is a preliminary guide only and Moat take no responsibility for error, omission, or misstatement. Moat reserves the right to make changes to these plans prior to exchange of contracts. The information contained within this document does not constitute part of any offer, contract, or warranty. Please speak to the sales team for more information.

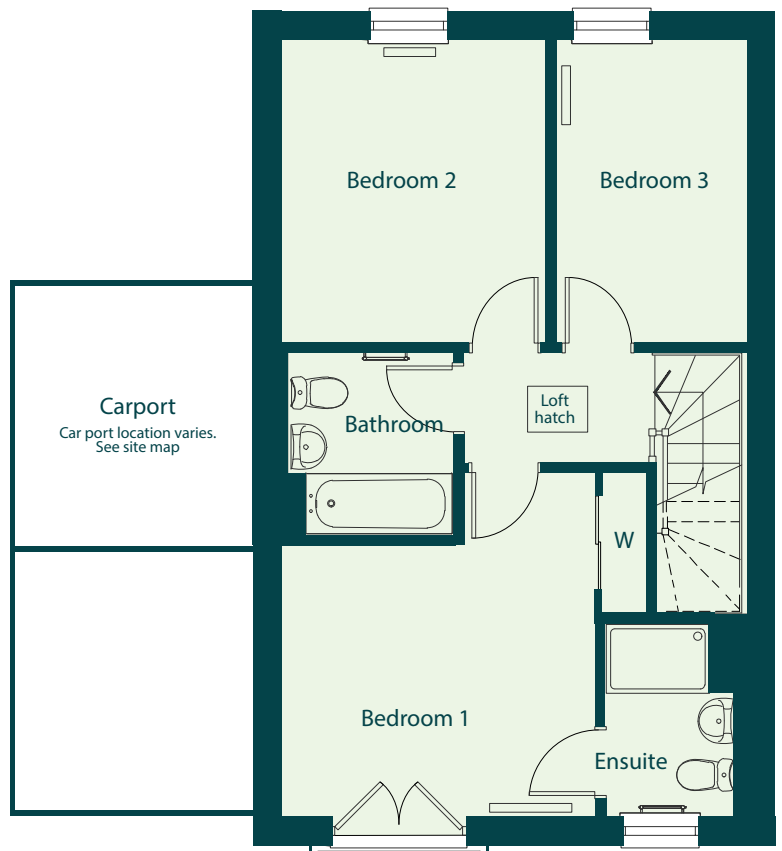
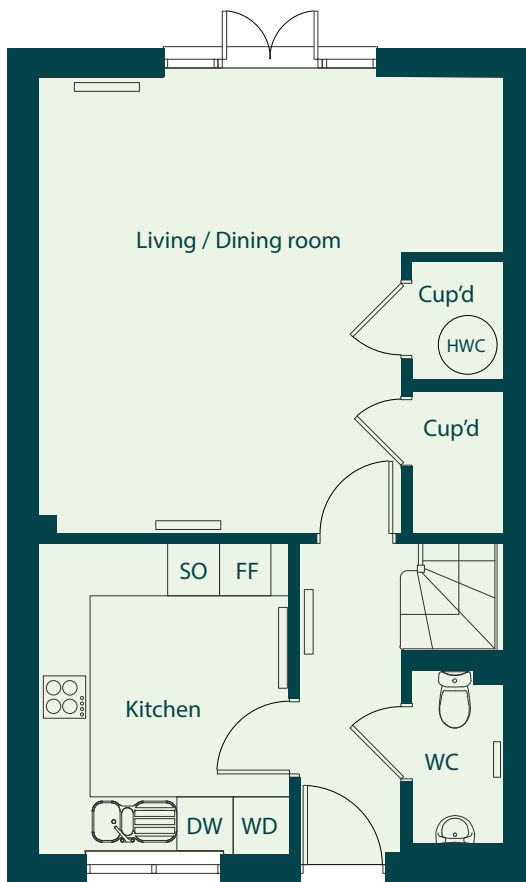
Moathomes

Plot
150

MOAT AT ALKERDEN EDGE

The Heron

Three bedroom semi-detached house
87 Colyer Drive, Ebbsfleet Valley, Kent, DA10 1GT



Total Internal Area	96 sqm
Kitchen	2.9m x 3.5m
Living / dining room	5.3m x 5.2m
Bedroom 1	3.6m x 3.9m
Bedroom 2	3m x 3.5m
Bedroom 3	2.1m x 3.5m

Energy Efficiency Rating	Environmental Impact (CO ₂) Rating
<p>87</p>	<p>97</p>
<p>England</p> <p>EU Directive 2002/91/EC</p>	<p>England</p> <p>EU Directive 2002/91/EC</p>

Cup'd = Cupboard, WC = Water Closet, SO = Single Oven, FF = Fridge Freezer, DW = Dishwasher, WD = Washer Dryer, W = Built in Wardrobe, HWC = Hot Water Cylinder

The plans are illustrative only and should be used as so by prospective buyers. All room sizes are approximate with maximum dimensions of finished measurements. Kitchen and bathroom layouts are indicative and subject to change. Dimensions should not be relied upon for carpet sizes, appliance sizes or items of furniture. Ceiling height may vary within select homes. Whilst every attempt has been made to ensure the accuracy of these floor plans, the information contained herein is a preliminary guide only and Moat take no responsibility for error, omission, or misstatement. Moat reserves the right to make changes to these plans prior to exchange of contracts. The information contained within this document does not constitute part of any offer, contract, or warranty. Please speak to the sales team for more information.

Moathomes

Plot
144

MOAT AT ALKERDEN EDGE

The Kestrel

Three bedroom semi-detached house
99 Colyer Drive, Ebbsfleet Valley, Kent, DA10 1GT



Total Internal Area	106 sqm
Kitchen	3m x 3.5m
Living / dining room	5.5m x 4.4m
Bedroom 1	3.7m x 3.9m
Bedroom 2	3.2m x 4.1m
Bedroom 3	2.2m x 3.5m

Energy Efficiency Rating	Environmental Impact (CO ₂) Rating
<p>86</p>	<p>97</p>
<p>England</p> <p>EU Directive 2002/91/EC</p>	<p>England</p> <p>EU Directive 2002/91/EC</p>

Cup'd = Cupboard, WC = Water Closet, SO = Single Oven, FF = Fridge Freezer, DW = Dishwasher, WD = Washer Dryer, W = Built in Wardrobe, HWC = Hot Water Cylinder

The plans are illustrative only and should be used as so by prospective buyers. All room sizes are approximate with maximum dimensions of finished measurements. Kitchen and bathroom layouts are indicative and subject to change. Dimensions should not be relied upon for carpet sizes, appliance sizes or items of furniture. Ceiling height may vary within select homes. Whilst every attempt has been made to ensure the accuracy of these floor plans, the information contained herein is a preliminary guide only and Moat take no responsibility for error, omission, or misstatement. Moat reserves the right to make changes to these plans prior to exchange of contracts. The information contained within this document does not constitute part of any offer, contract, or warranty. Please speak to the sales team for more information.

Moathomes

Plot
143

MOAT AT ALKERDEN EDGE

The Kestrel

Three bedroom semi-detached house
101 Colyer Drive, Ebbsfleet Valley, Kent, DA10 1GT



Total Internal Area	106 sqm
Kitchen	3m x 3.5m
Living / dining room	5.5m x 4.4m
Bedroom 1	3.7m x 3.9m
Bedroom 2	3.2m x 4.1m
Bedroom 3	2.2m x 3.5m

Energy Efficiency Rating	Environmental Impact (CO ₂) Rating
<p>86</p>	<p>97</p>
England	England

Cup'd = Cupboard, WC = Water Closet, SO = Single Oven, FF = Fridge Freezer, DW = Dishwasher, WD = Washer Dryer, W = Built in Wardrobe, HWC = Hot Water Cylinder

The plans are illustrative only and should be used as so by prospective buyers. All room sizes are approximate with maximum dimensions of finished measurements. Kitchen and bathroom layouts are indicative and subject to change. Dimensions should not be relied upon for carpet sizes, appliance sizes or items of furniture. Ceiling height may vary within select homes. Whilst every attempt has been made to ensure the accuracy of these floor plans, the information contained herein is a preliminary guide only and Moat take no responsibility for error, omission, or misstatement. Moat reserves the right to make changes to these plans prior to exchange of contracts. The information contained within this document does not constitute part of any offer, contract, or warranty. Please speak to the sales team for more information.

Moathomes