

# Welcome to Ashtree Grove

Hampton in Arden, Solihull, B92 0BF

A collection of 2 and 3 bedroom  
Shared Ownership homes.



[bromfordhomes.co.uk/ashtreegrove](https://bromfordhomes.co.uk/ashtreegrove)

## On your doorstep

Nestled in the charming village of Hampton in Arden, this exclusive collection of two and three-bedroom Shared Ownership homes at Ashtree Grove offers first-time buyers a rare opportunity to own a home of their own in this sought after location. Surrounded by 3.2 acres of green space, you'll enjoy the strong community feel that many buyers dream of.



**Arden  
Academy**  
4.2 miles



**Hampton-in-  
Arden  
Train Station**  
0.4 miles



**The Hampton  
Health & Fitness  
club**  
0.7 miles

### Local area connection

To meet the needs of local people most of our homes for sale require a local connection to the area. The connection criteria varies between sites, but generally it's based on:

- Being a resident (or employed) within the area for a number of years (usually between 2 to 5)
- Family connections – for example, parent, grandparent, child, grandchild or adult sibling – who have lived in the area for at least three years

**Priority will be given to applicants who have a connection to Solihull.**

If you need any more information, please speak to one of our helpful Sales Consultants.

We follow Homes England Guidelines on First Come, First Served policies for Shared Ownership homes. Please visit [our policies page](#) for full policy details

**Bromford.**  
Shared Ownership



# Ashtree Grove

Hampton in Arden, Solihull, B92 0BF

- R** The Rosegate  
2 bed home
- B** The Bramblewood  
3 bed home
- Yellow circle** Bromford  
rented homes
- Grey circle** David Wilson  
Homes

N

Green space

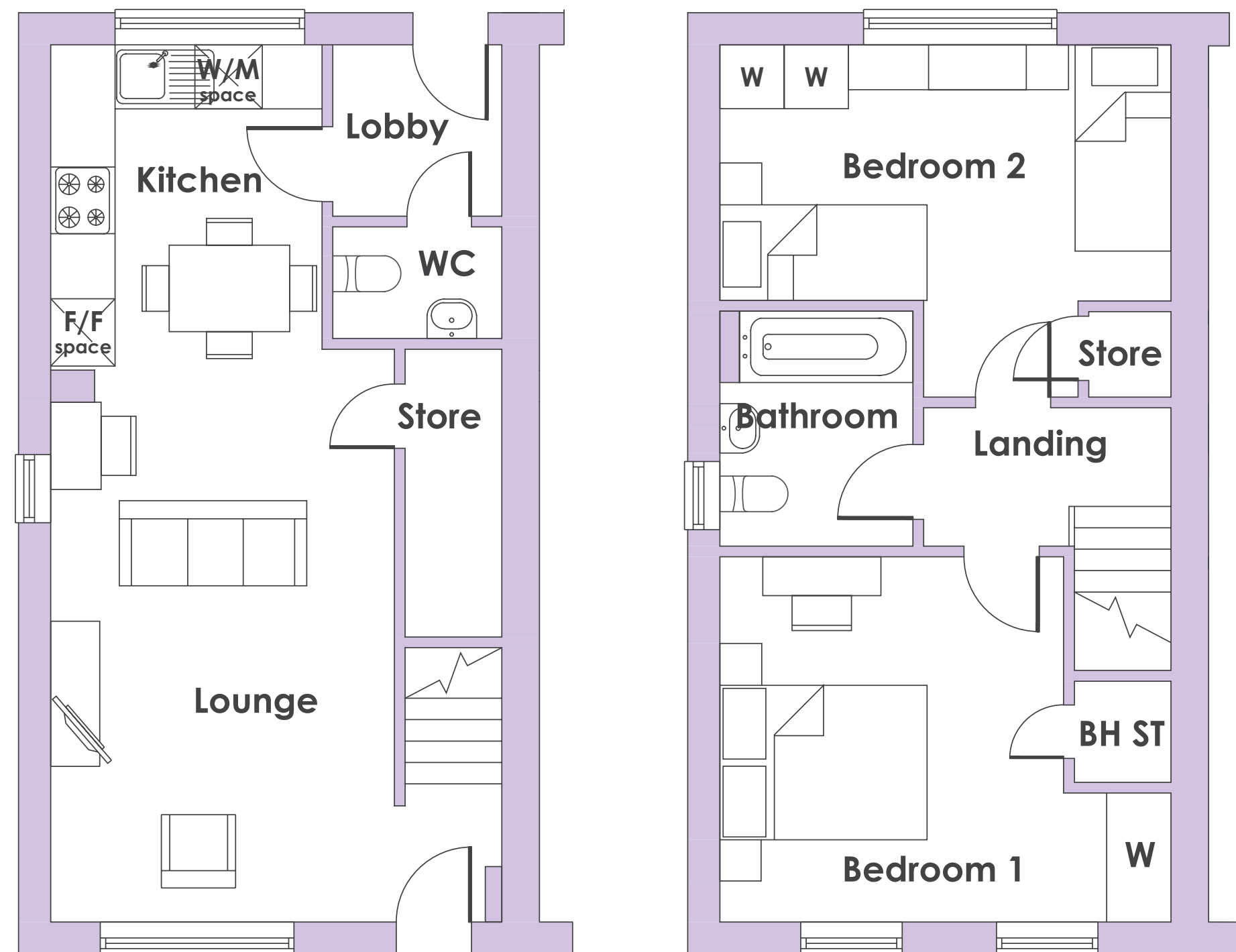
Existing or future  
development



Plots: 68, 69, 70, 77, 78 & 81-84

# The Rosegate

## 2 bedroom home



### Ground floor

#### Kitchen / dining

3.04m x 2.53m / 10'0" x 8'4"

#### Lounge

4.86m x 3.20m / 15'11" x 10'6"

#### Lobby

1.60m x 1.57m / 5'3" x 5'2"

### First floor

#### Bedroom 1

4.20m x 3.41m / 13'9" x 11'2"

#### Bedroom 2

4.20m x 3.29m / 13'9" x 10'10"

#### Bathroom

2.20m x 1.80m / 7'3" x 5'11"



2 bedrooms



Energy  
efficient



Turf to rear  
garden



10 Year NHBC  
warranty



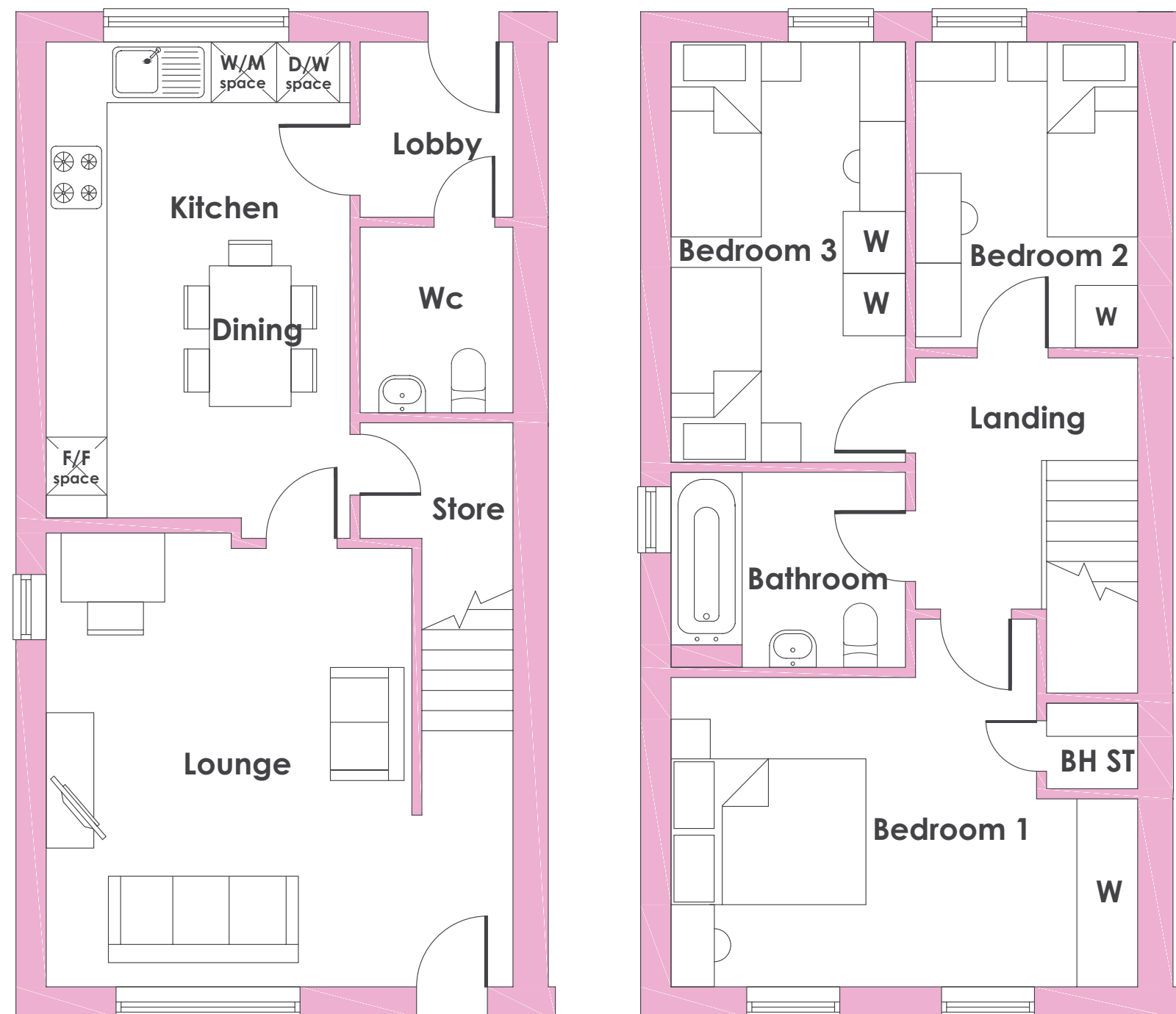
- Two-bedroom energy-efficient home
- Flooring included
- Versatile open plan lounge, dining area and kitchen
- Guest cloakroom
- Plenty of essential storage
- Turfed rear garden
- Allocated parking
- Electric vehicle charging point



Plots: 52, 53, 79 & 80

# The Bramblewood

## 3 bedroom home



### Ground floor

#### Kitchen/dining

4.67m x 2.97m / 15'4" x 9'9"

#### Lounge

4.41m x 3.60m / 14'6" x 11'10"

#### Lobby

1.70m x 1.52m / 5'7" x 5'0"

### First floor

#### Bedroom 1

4.57m x 3.0m / 15'0" x 9'10"

#### Bedroom 2

3.0m x 2.14m / 9'10" x 7'0"

#### Bedroom 3

4.06m x 2.31m / 13'4" x 7'7"

#### Bathroom

2.30m x 1.88m / 7'7" x 6'2"



3 bedrooms



Energy  
efficient



Turf to rear  
garden



10 Year NHBC  
warranty



- Three bedroom energy-efficient home
- Flooring included
- Open plan kitchen with dining area
- Useful storage cupboard
- Guest cloakroom
- Allocated parking
- Electric vehicle charging point
- Turfed rear garden





## Who are we?

Since 1963 we have been providing customers with new and affordable homes. We want all of our customers to thrive and believe that with the right homes and someone who believes in their potential, almost anything is possible - with Bromford Shared Ownership we're helping more people than ever before to realise their dreams of owning their home.

Where does my money go when I buy a Bromford home? As a registered charity through the FCA registered societies, all the money Bromford makes goes back into the communities we work in and helps the people we work with thrive for a better safer life.



Shannon Way,  
Ashchurch,  
Tewkesbury,  
GL20 8ND

0800 0852 499  
[sales@bromford.co.uk](mailto:sales@bromford.co.uk)  
[bromfordhomes.co.uk](http://bromfordhomes.co.uk)



Follow us on TikTok

Visit the Home Ownership Hub to find  
out more about your new home  
[bromfordhomes.co.uk/home-ownership-hub](http://bromfordhomes.co.uk/home-ownership-hub)



Bromford abides by the Consumer Protection  
from Unfair Trading Regulations 2008



**Bromford.**  
Shared Ownership