

Latimer at One Goodmayes

Ilford, East London



LATIMER
by Clarion Housing Group



FEEL PART OF ONE GOODMAYES WITH SHARED OWNERSHIP

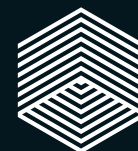
Something special is underway at One Goodmayes, in east London's Ilford, and at Latimer we are glad to be part of it.

Following the success of the first phase of Latimer at One Goodmayes, this next phase has been eagerly awaited and is set to be just as popular.

Located behind a smart new public square, One Goodmayes combines a range of high quality homes with exciting additions planned for the future including a community growers' market, digital music academy, gym facility and places for co-working.

Our contribution is to be a collection of one, two and three bedroom apartments for Shared Ownership.

LATIMER DELIVERS MORE



LATIMER
by Clarion Housing Group

Latimer is part of Clarion Housing Group, and is a new kind of housing developer and that means exceeding expectations to 'deliver more'. Latimer is working with communities and councils across the country. Providing tailored solutions to their needs.

Latimer is a placemaker, committed to creating spaces and homes that are amazing to live in and visit, places that appeal to a broad range of people and preferences but always with a strong focus on community and quality.

Bricks and mortar are at the foundation of everything we do. But it's a foundation on which to build more than just homes. The Latimer impact on the land we develop is positive and enhances environments. Our surplus is poured back into communities helping the Group deliver more.

Latimer is pushing the boundaries of expectation. Because affordable shouldn't mean poor-quality. Because aspirational shouldn't mean out of reach. Because accessible shouldn't mean generic. Latimer is delivering more for residents, for communities, for the future.

Latimer doesn't just deliver homes, Latimer delivers social impact.

Latimer delivers more.

RICHARD COOK
CHIEF DEVELOPMENT OFFICER



This is a busy area where many of life's daily essentials are very close at hand.

The local shops include big supermarkets, smaller convenience stores, independent restaurants and cafés. There's a branch of Aldi next door to One Goodmayes and Tesco Extra about seven minutes' walk.

Ilford town centre provides many more shops and useful services. Ilford Exchange has 90 shops, while the High Road offers you major retailers such as Waterstones, Superdrug and Marks & Spencer. Banks, phone shops, hairdressers, beauty salons and coffee shops all cluster here too.

Westfield Stratford City, east London's super-mall, is 20 minutes by train, and a shopper's delight with 213 retailers of all descriptions, 90 restaurants, a Vue cinema and bowling alley.



FRESH AIR AND KEEPING FIT



There's a surprising amount of green space close to One Goodmayes.



The many local parks include Green Flag status Seven Kings Park, where you can stroll and admire the rose beds or enjoy tennis, the outdoor gym and skate park.

Goodmayes Park also has the Green Flag award. Its delights include sensory gardens, huge playing fields, tennis courts and a wildflower meadow. It's a great place for children to play.

Just a little further away is Eastbrookend Country Park, a relatively new open space whose modern approach takes in the future-facing Millenium Centre and a range of different habitats to encourage biodiversity: grassland, woodlands, marshes and lakes.

The new Mayfield Leisure Centre and Pool is a fantastic facility just 15 minutes' walk from home. The pool offers children and women-only sessions, while the studio provides a range of classes from Bhangra Fusion to Box Fit. There's also a very well-equipped gym, badminton courts and a floodlit all-weather pitch.

Athletics enthusiasts can head to the Jim Peters Stadium, for its running track, jumping pits, and throwing cage as well as facilities for cycling and football.

IN YOUR NEIGHBOURHOOD

A selection of the leisure activities, shopping, sport and fitness, outdoor life, restaurants and well-regarded schools within a short distance of One Goodmayes.

Education

- 1 New City College
- 2 Eastcourt Independent
- 3 Goodmayes Primary (Ofsted Good)
- 4 Mayfield School (Ofsted Outstanding)
- 5 Al-Noor VA Muslim Primary (Ofsted Good/Outstanding)
- 6 Ark Isaac Newton Academy (Ofsted Outstanding)
- 7 Seven Kings School (Ofsted Outstanding)
- 8 The Palmer Catholic Academy (Ofsted Good)
- 9 South Park Primary (Ofsted Good)

Retail & essentials

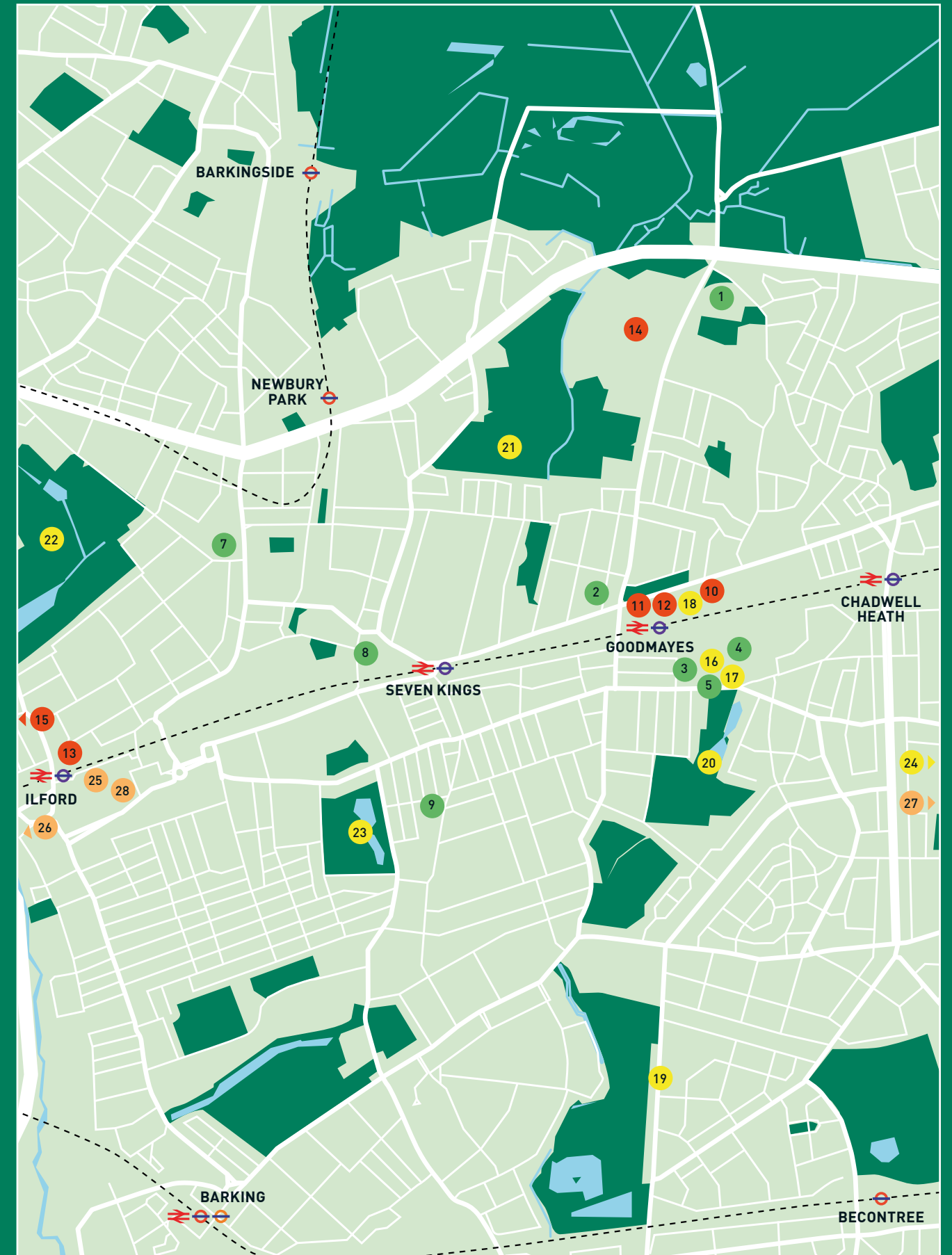
- 10 Aldi
- 11 Tesco Extra
- 12 Goodmayes Retail Park
- 13 Exchange Ilford
- 14 King George Hospital
- 15 Westfield Stratford City

Fitness, outdoor & leisure

- 16 Mayfield Leisure Centre
- 17 Vizion Fitness
- 18 The Gym Group
- 19 Jim Peters Stadium
- 20 Goodmayes Park
- 21 Seven Kings Park
- 22 Valentine's Park
- 23 South Park
- 24 Eastbrookend Country Park

Culture & entertainment

- 25 Cineworld
- 26 Vue Westfield Stratford City
- 27 Valence House Museum
- 28 Kenneth More Theatre



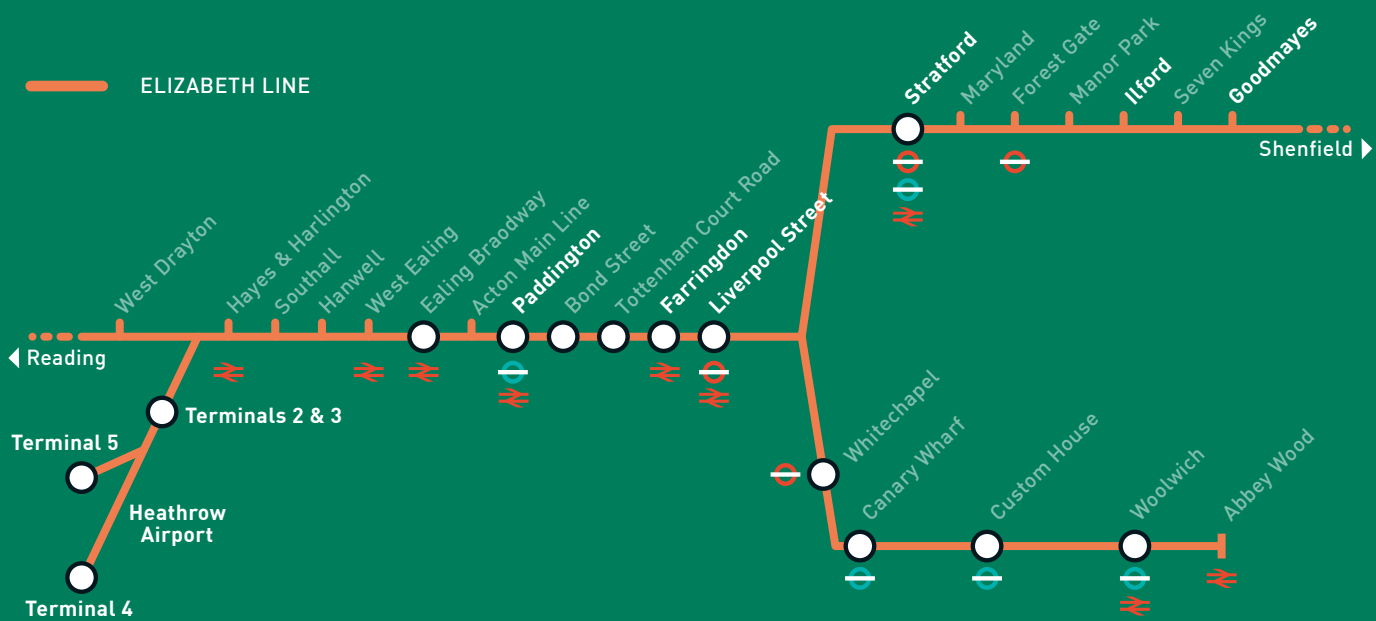
Map is not to scale and shows approximate locations only.

Speeding you on your way

Connections are one of the outstanding advantages of One Goodmayes. The development is on the Elizabeth Line, whose new high frequency trains whisk you westwards to the City, West End and Heathrow in high speed style.

The long-awaited Elizabeth Line is now fully operational, meaning that residents at One Goodmayes have some of London's best connections on their doorstep. Seven Kings station is about seven minutes' walk and from here you can travel directly to key destinations for work, leisure or international connections.

Buses are also plentiful in the area, with a bus stop directly outside One Goodmayes. The 86 service is handy for reaching Ilford, Stratford, and Seven Kings station.



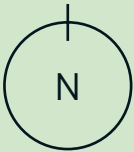
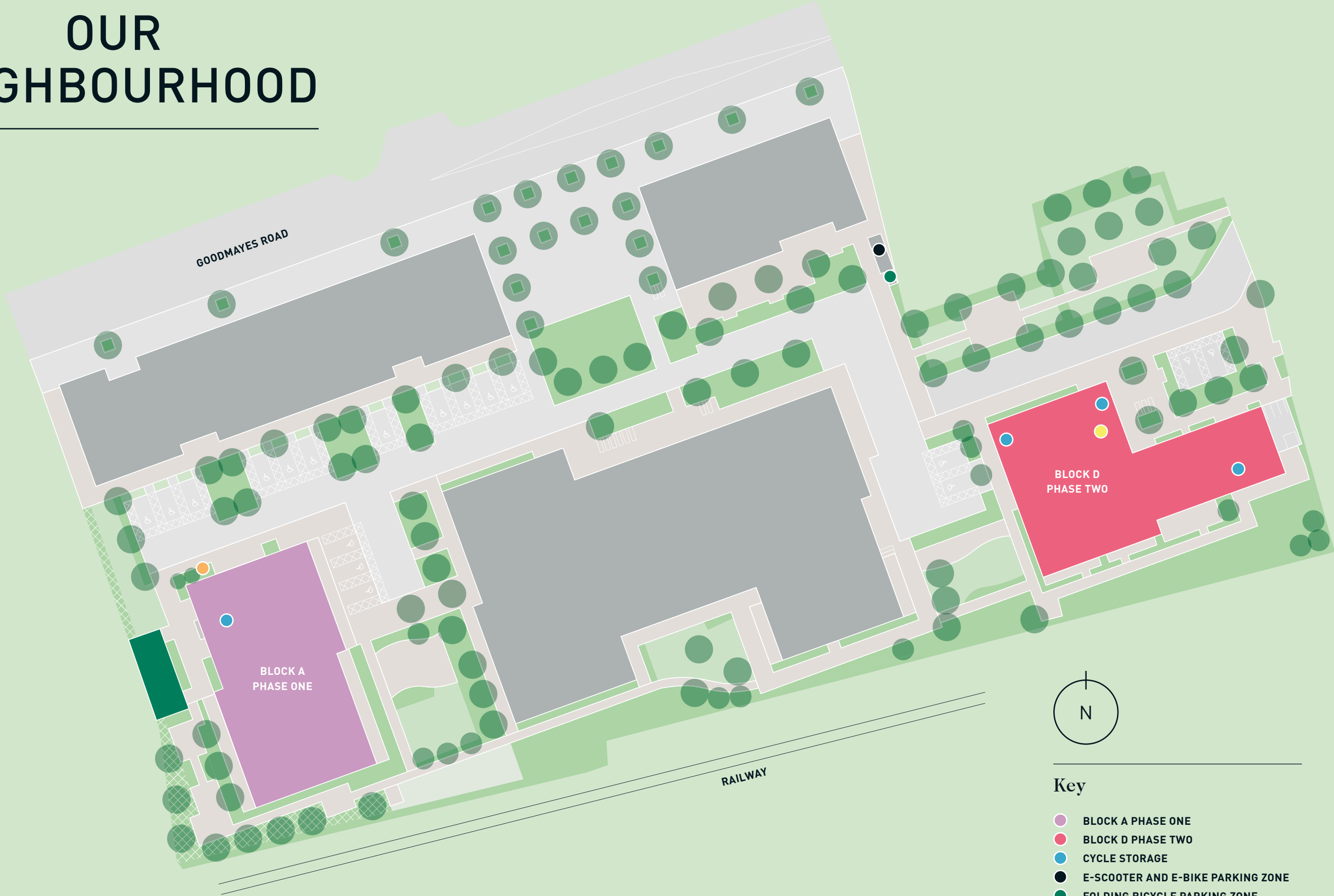
Ilford	2 mins
Stratford	13 mins
Liverpool Street	21 mins
Farringdon	23 mins
Paddington	33 mins
Heathrow Terminals 2 & 3	57 mins

Map is not to scale and shows approximate distance only. Journey times are taken from Google Maps/National Rail



TRANSPORT & CONNECTIONS

OUR NEIGHBOURHOOD



Key

- BLOCK A PHASE ONE
- BLOCK D PHASE TWO
- CYCLE STORAGE
- E-SCOOTER AND E-BIKE PARKING ZONE
- FOLDING BICYCLE PARKING ZONE
- SMART PARCEL LOCKERS
- BIN STORE

The site plan is indicative only and may be subject to change and subject to planning. In line with our policy of continuous improvement we reserve the right to alter the layout, building style, landscaping and specification at any time without notice. Parking is indicative only - please speak to your sales adviser for individual plot layouts.



Computer generated images are indicative only.

Computer generated images are indicative only.

TYPE D1

ONE BEDROOM APARTMENT

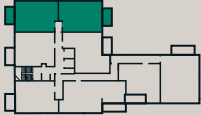
- SECOND FLOOR: PLOTS 417, 418*
- THIRD FLOOR: PLOTS 425, 426*
- FOURTH FLOOR: PLOTS 433, 434*
- FIFTH FLOOR: PLOTS 441, 442*
- SIXTH FLOOR: PLOTS 447, 448*
- SEVENTH FLOOR: PLOTS 453, 454*
- EIGHTH FLOOR: PLOTS 459, 460*
- NINTH FLOOR: PLOTS 465, 466*
- TENTH FLOOR: PLOTS 471, 472*
- ELEVENTH FLOOR: PLOTS 477, 478*



Key

- ST STORAGE
- W WARDROBE

KITCHEN/ LIVING/DINING	6.1M X 3.6M	20'0" X 11'10"
BEDROOM 1	4.8M X 2.9M	15'9" X 9'6"



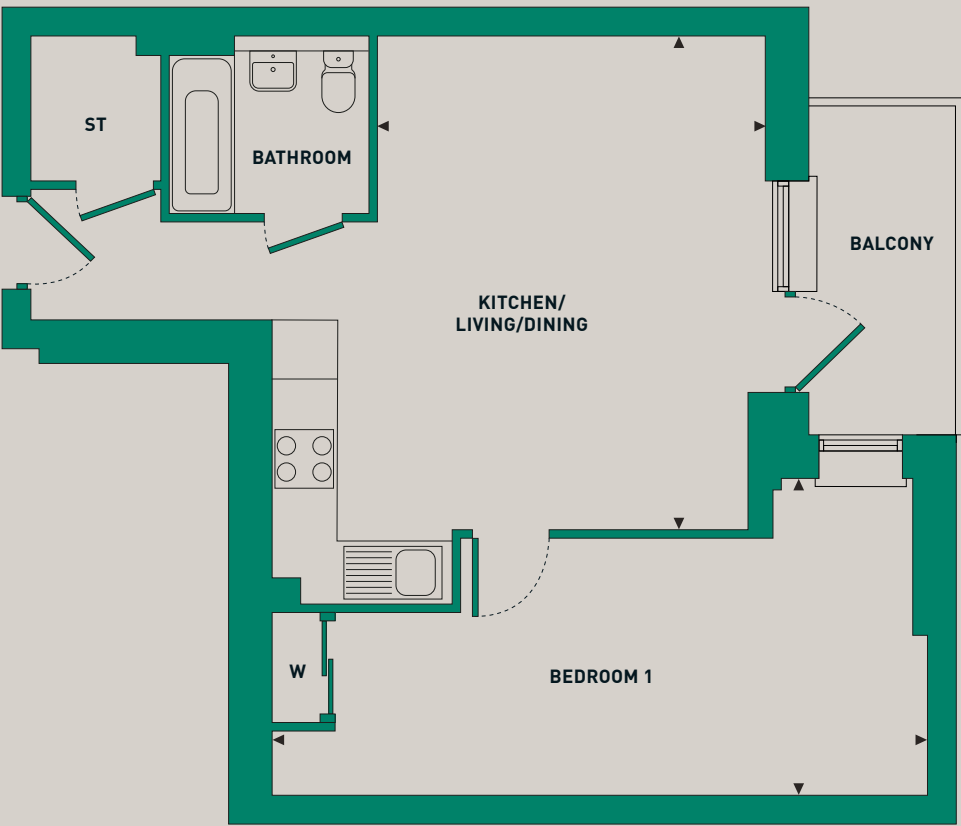
TOTAL AREA	51.0M ²	549FT ²
------------	--------------------	--------------------

*Handed. Floorplans shown are for approximate measurements only. Exact layouts and sizes may vary. All measurements may vary within a tolerance of 5%. The dimensions are not intended to be used for carpet sizes, appliance sizes or items of furniture.

TYPE D2

ONE BEDROOM APARTMENT

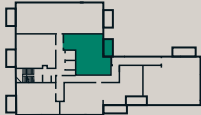
- SECOND FLOOR: PLOT 419
- THIRD FLOOR: PLOT 427



Key

- ST STORAGE
- W WARDROBE

KITCHEN/ LIVING/DINING	5.2M X 4.1M	17'1" X 13'5"
BEDROOM 1	7.0M X 3.3M	23'0" X 10'10"



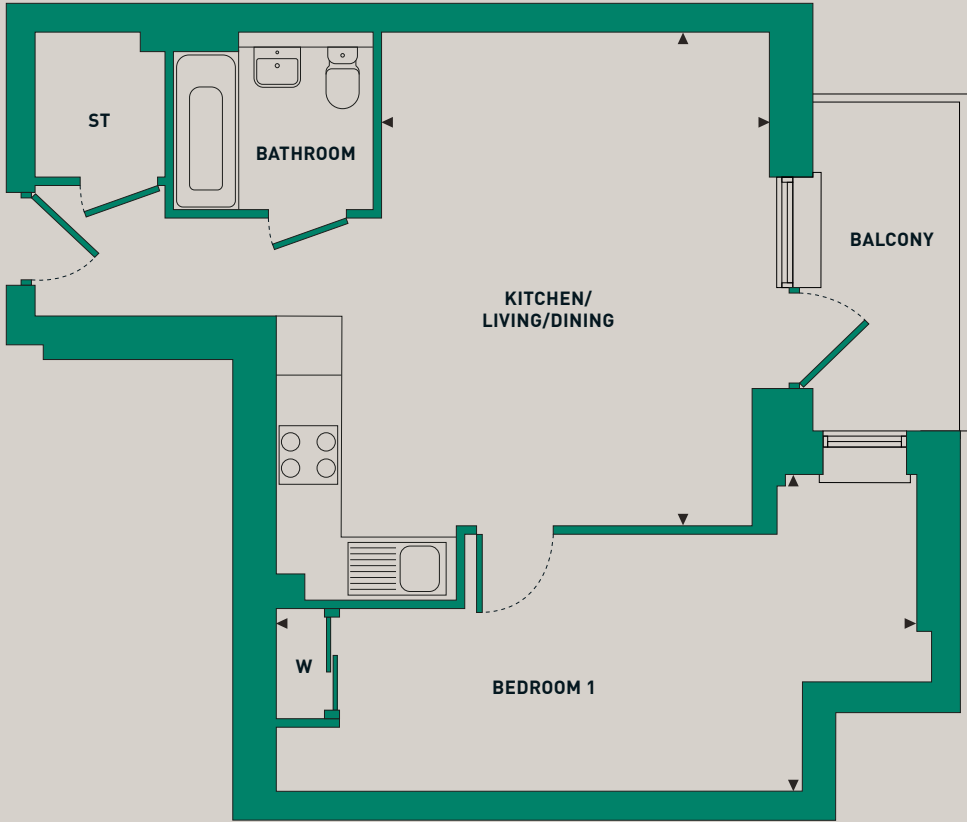
TOTAL AREA	56.6M ²	609FT ²
------------	--------------------	--------------------

Floorplans shown are for approximate measurements only. Exact layouts and sizes may vary. All measurements may vary within a tolerance of 5%. The dimensions are not intended to be used for carpet sizes, appliance sizes or items of furniture.



Computer generated image is indicative only.

TYPE D2
ONE BEDROOM APARTMENT
FOURTH FLOOR: PLOT 435



Key		KITCHEN/ LIVING/DINING	5.2M X 4.1M	17'1" X 13'5"	<div><div>N</div><div></div></div>
ST	STORAGE	BEDROOM 1	7.0M X 3.3M	23'0" X 10'10"	
W	WARDROBE				
TOTAL AREA			55.2M²	594FT²	

Floorplans shown are for approximate measurements only. Exact layouts and sizes may vary. All measurements may vary within a tolerance of 5%. The dimensions are not intended to be used for carpet sizes, appliance sizes or items of furniture.

TYPE D3

ONE BEDROOM APARTMENT

SECOND FLOOR: PLOT 421
THIRD FLOOR: PLOT 429
FOURTH FLOOR: PLOT 437



Key
ST STORAGE
W WARDROBE

KITCHEN/ LIVING/DINING	6.0M X 3.5M	19'8" X 11'6"
BEDROOM 1	5.5M X 3.1M	18'1" X 10'2"

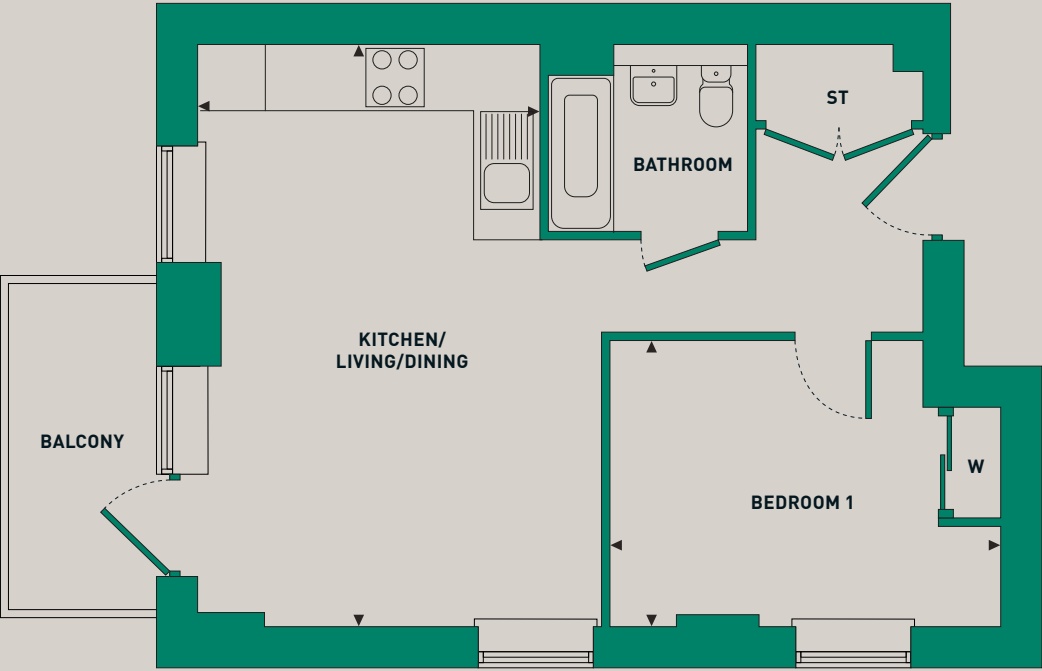
TOTAL AREA 51.5M² 554FT²

Floorplans shown are for approximate measurements only. Exact layouts and sizes may vary. All measurements may vary within a tolerance of 5%. The dimensions are not intended to be used for carpet sizes, appliance sizes or items of furniture.

TYPE D6

ONE BEDROOM APARTMENT

SECOND FLOOR: PLOT 423
THIRD FLOOR: PLOT 431
FOURTH FLOOR: PLOT 439



Key
ST STORAGE
W WARDROBE

KITCHEN/ LIVING/DINING	6.2M X 3.6M	20'4" X 11'10"
BEDROOM 1	4.1M X 3.0M	13'5" X 9'10"

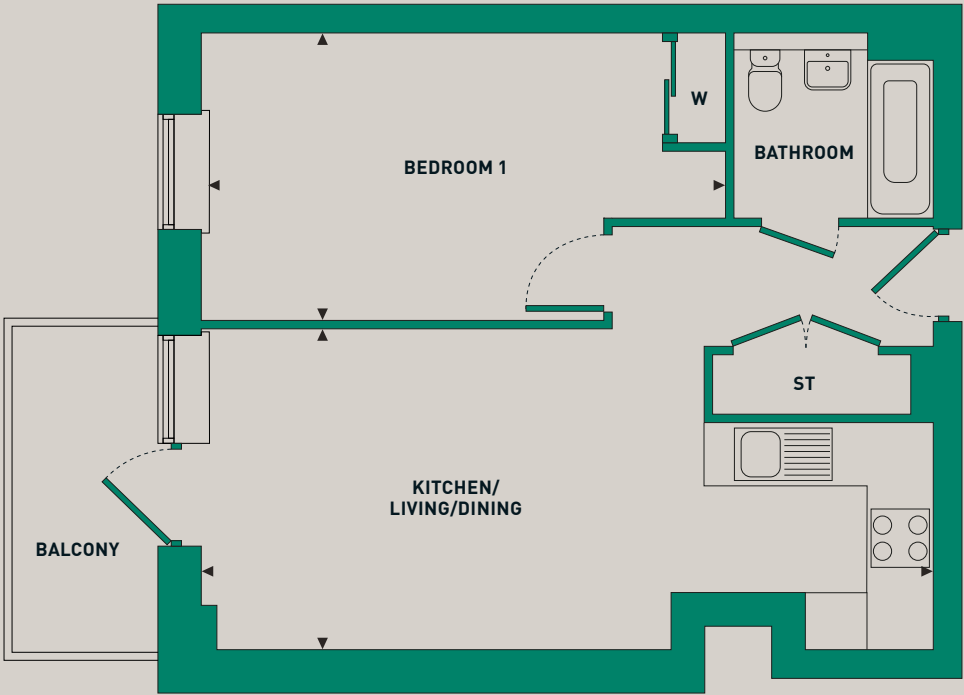
TOTAL AREA 50.4M² 543FT²

Floorplans shown are for approximate measurements only. Exact layouts and sizes may vary. All measurements may vary within a tolerance of 5%. The dimensions are not intended to be used for carpet sizes, appliance sizes or items of furniture.

TYPE D7

ONE BEDROOM APARTMENT

- SECOND FLOOR: PLOT 416
- THIRD FLOOR: PLOT 424
- FOURTH FLOOR: PLOT 432
- FIFTH FLOOR: PLOT 440
- SIXTH FLOOR: PLOT 446
- SEVENTH FLOOR: PLOT 452
- EIGHTH FLOOR: PLOT 458
- NINTH FLOOR: PLOT 464
- TENTH FLOOR: PLOT 470
- ELEVENTH FLOOR: PLOT 476

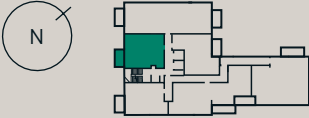


Key

- ST STORAGE
- W WARDROBE

KITCHEN/ LIVING/DINING	7.8M X 3.4M	25'7" X 11'2"
BEDROOM 1	5.6M X 3.1M	18'4" X 10'2"

TOTAL AREA 51.6M² 555FT²

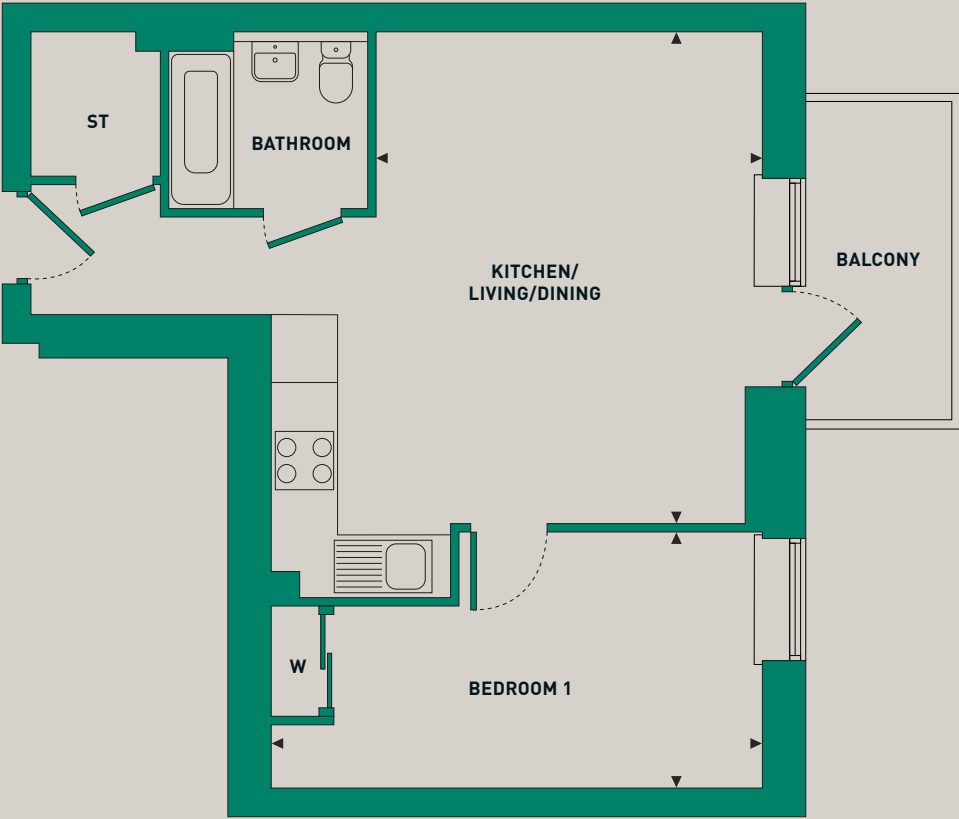


Floorplans shown are for approximate measurements only. Exact layouts and sizes may vary. All measurements may vary within a tolerance of 5%. The dimensions are not intended to be used for carpet sizes, appliance sizes or items of furniture.

TYPE D8

ONE BEDROOM APARTMENT

FIFTH FLOOR: PLOT 443

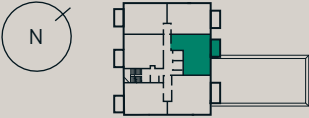


Key

- ST STORAGE
- W WARDROBE

KITCHEN/ LIVING/DINING	5.2M X 4.1M	17'1" X 13'4"
BEDROOM 1	5.2M X 2.7M	17'1" X 8'10"

TOTAL AREA 51.0M² 548FT²

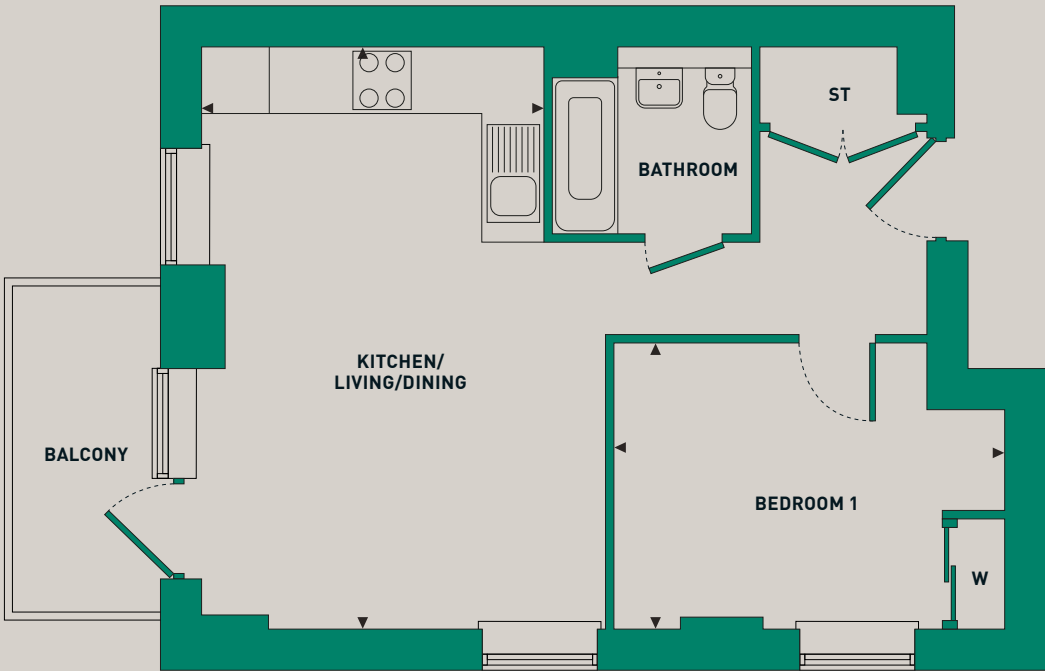


Floorplans shown are for approximate measurements only. Exact layouts and sizes may vary. All measurements may vary within a tolerance of 5%. The dimensions are not intended to be used for carpet sizes, appliance sizes or items of furniture.

TYPE D10

ONE BEDROOM APARTMENT

FIFTH FLOOR: PLOT 445
SIXTH FLOOR: PLOT 451
SEVENTH FLOOR: PLOT 457
EIGHTH FLOOR: PLOT 463
NINTH FLOOR: PLOT 469
TENTH FLOOR: PLOT 475
ELEVENTH FLOOR: PLOT 481



Key

ST STORAGE
W WARDROBE

KITCHEN/
LIVING/DINING 6.2M X 3.6M 20'4" X 11'10"
BEDROOM 1 4.2M X 3.0M 13'9" X 9'10"

TOTAL AREA 50.4M² 543FT²

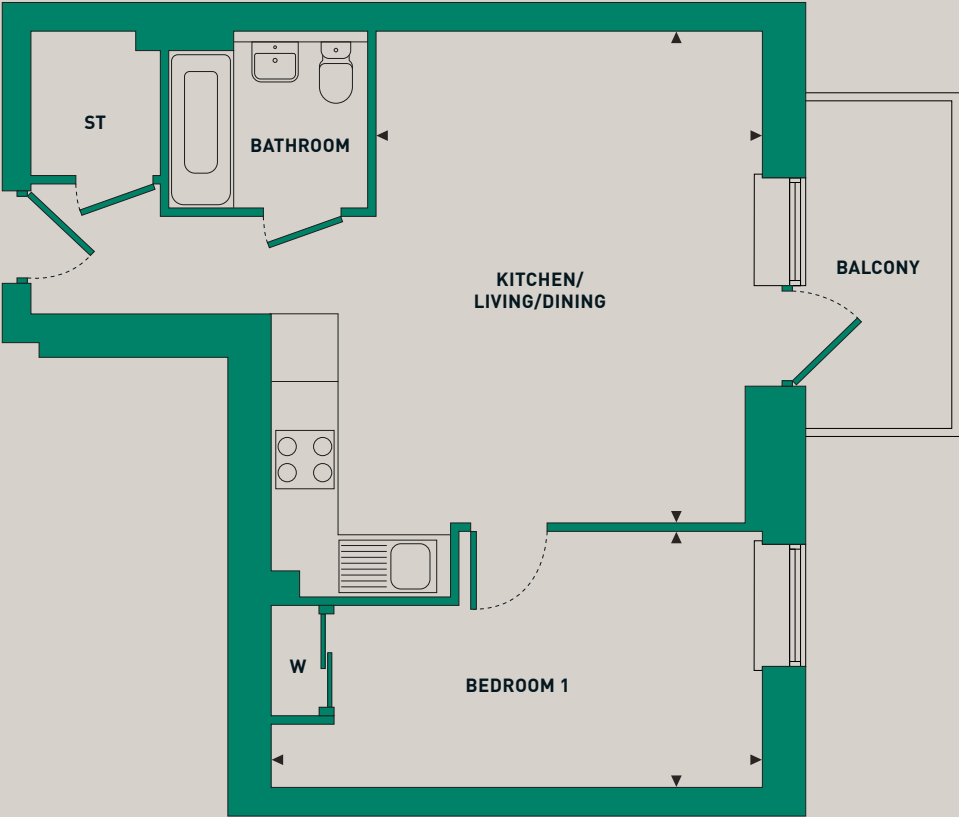


Floorplans shown are for approximate measurements only. Exact layouts and sizes may vary. All measurements may vary within a tolerance of 5%. The dimensions are not intended to be used for carpet sizes, appliance sizes or items of furniture.

TYPE D11

ONE BEDROOM APARTMENT

SIXTH FLOOR: PLOT 449
SEVENTH FLOOR: PLOT 455
EIGHTH FLOOR: PLOT 461
NINTH FLOOR: PLOT 467
TENTH FLOOR: PLOT 473
ELEVENTH FLOOR: PLOT 479

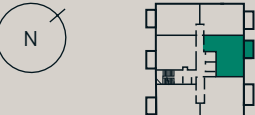


Key

ST STORAGE
W WARDROBE

KITCHEN/
LIVING/DINING 5.2M X 4.1M 17'1" X 13'4"
BEDROOM 1 5.2M X 2.8M 17'1" X 9'2"

TOTAL AREA 51.2M² 551FT²

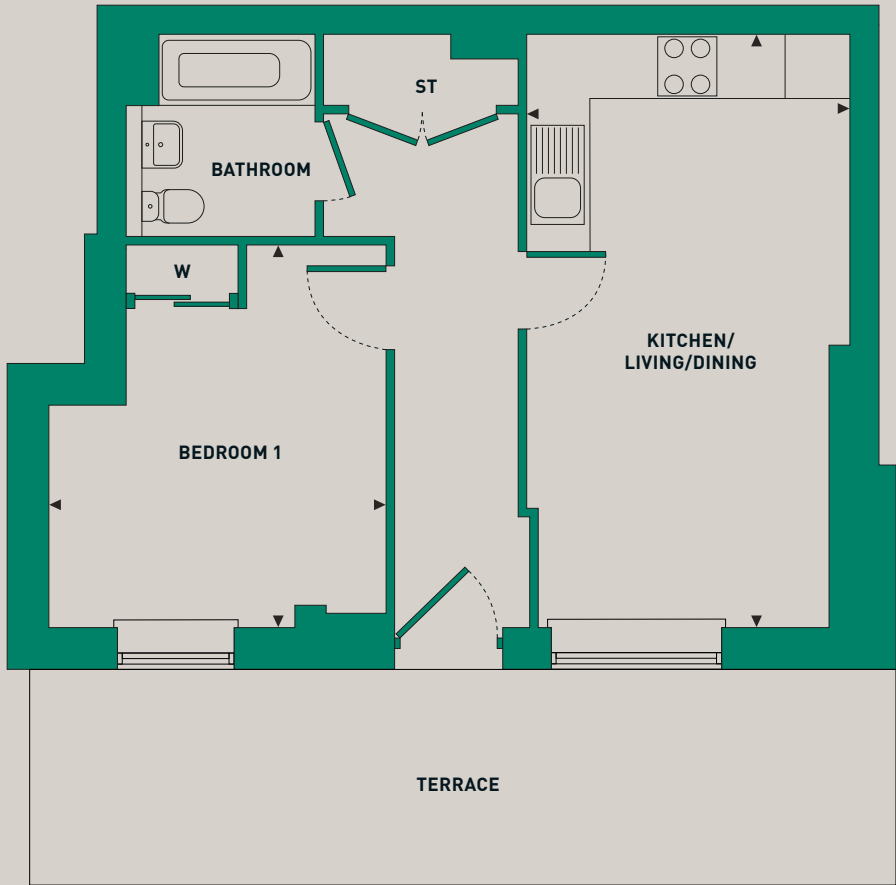


Floorplans shown are for approximate measurements only. Exact layouts and sizes may vary. All measurements may vary within a tolerance of 5%. The dimensions are not intended to be used for carpet sizes, appliance sizes or items of furniture.

TYPE D14

ONE BEDROOM APARTMENT

GROUND FLOOR: PLOT 406

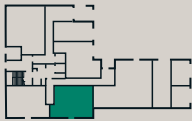


Key

- ST
- STORAGE
- W
- WARDROBE

KITCHEN/ LIVING/DINING	6.2M X 3.4M	20'4" X 11'2"
BEDROOM 1	4.0M X 3.5M	13'1" X 11'6"

TOTAL AREA	50.3M ²	541FT ²
------------	--------------------	--------------------

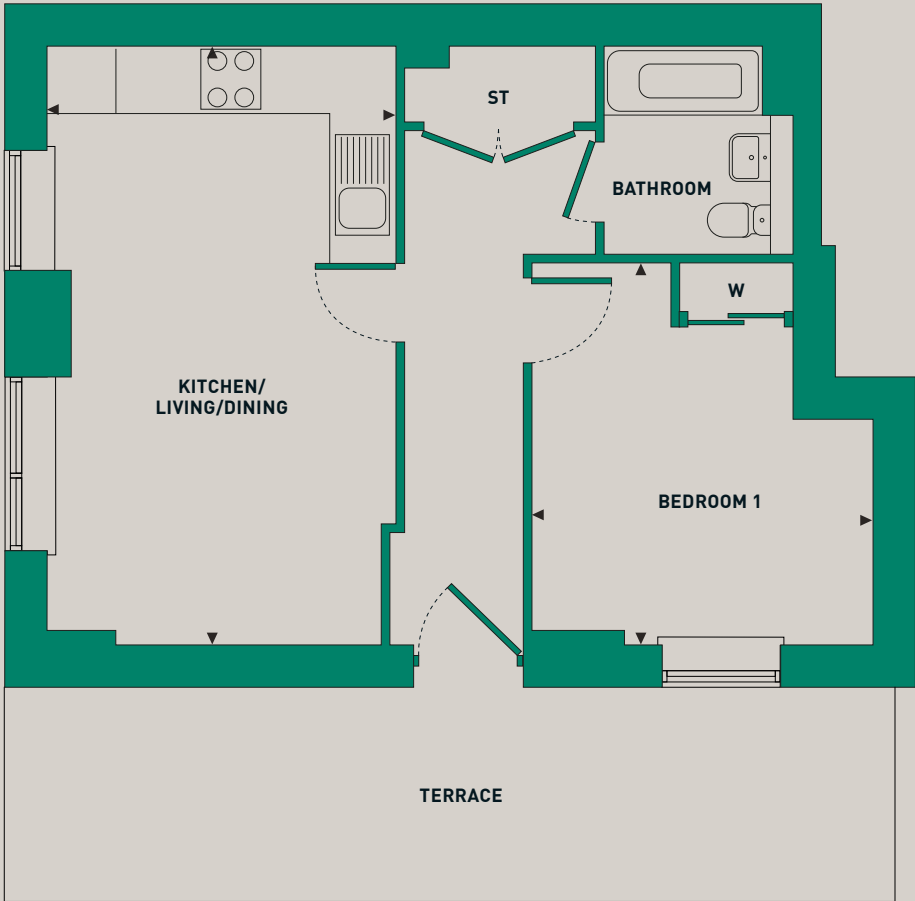


Floorplans shown are for approximate measurements only. Exact layouts and sizes may vary. All measurements may vary within a tolerance of 5%. The dimensions are not intended to be used for carpet sizes, appliance sizes or items of furniture.

TYPE D15

ONE BEDROOM APARTMENT

GROUND FLOOR: PLOT 407

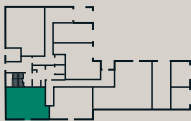


Key

- ST
- STORAGE
- W
- WARDROBE

KITCHEN/ LIVING/DINING	6.2M X 3.6M	20'4" X 11'10"
BEDROOM 1	4.0M X 3.5M	13'1" X 11'6"

TOTAL AREA	50.4M ²	542FT ²
------------	--------------------	--------------------

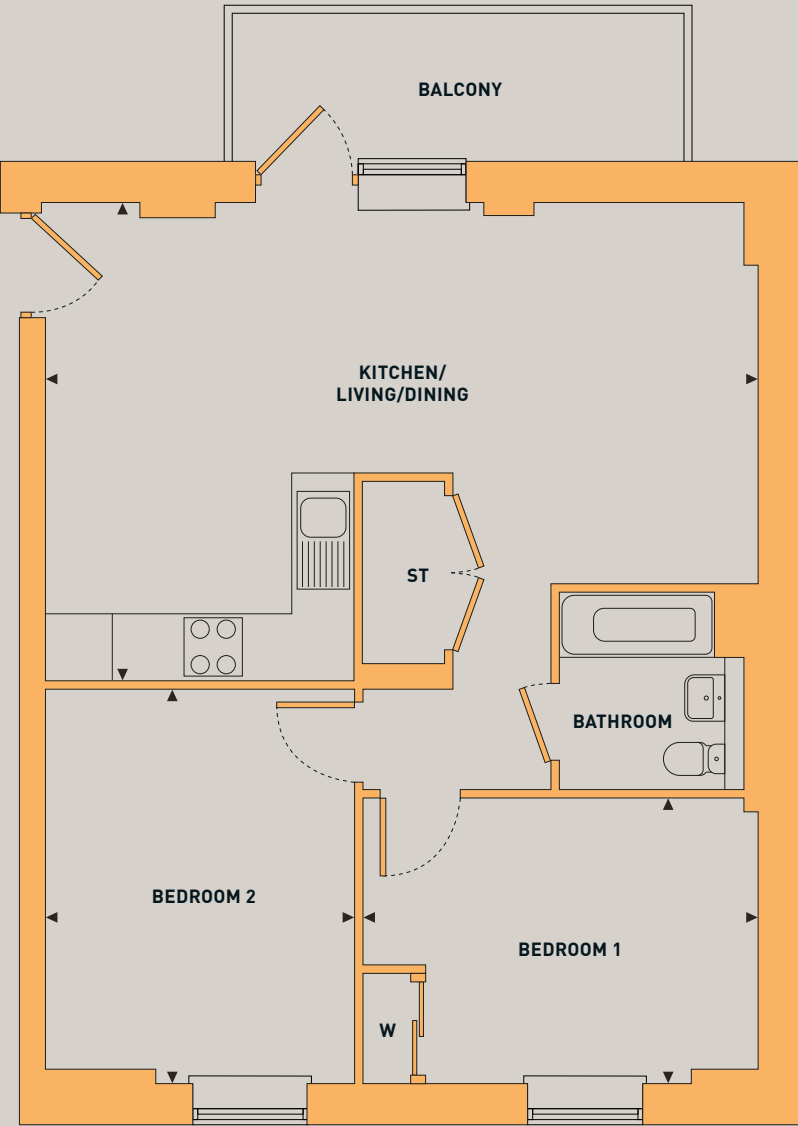


Floorplans shown are for approximate measurements only. Exact layouts and sizes may vary. All measurements may vary within a tolerance of 5%. The dimensions are not intended to be used for carpet sizes, appliance sizes or items of furniture.

TYPE D4

TWO BEDROOM APARTMENT

SECOND FLOOR: PLOT 420
THIRD FLOOR: PLOT 428
FOURTH FLOOR: PLOT 436



Key

ST STORAGE
W WARDROBE

KITCHEN/ LIVING/DINING	7.6M X 5.1M	24'11" X 16'9"
BEDROOM 1	4.2M X 3.0M	13'9" X 9'10"
BEDROOM 2	4.1M X 3.3M	13'5" X 10'10"

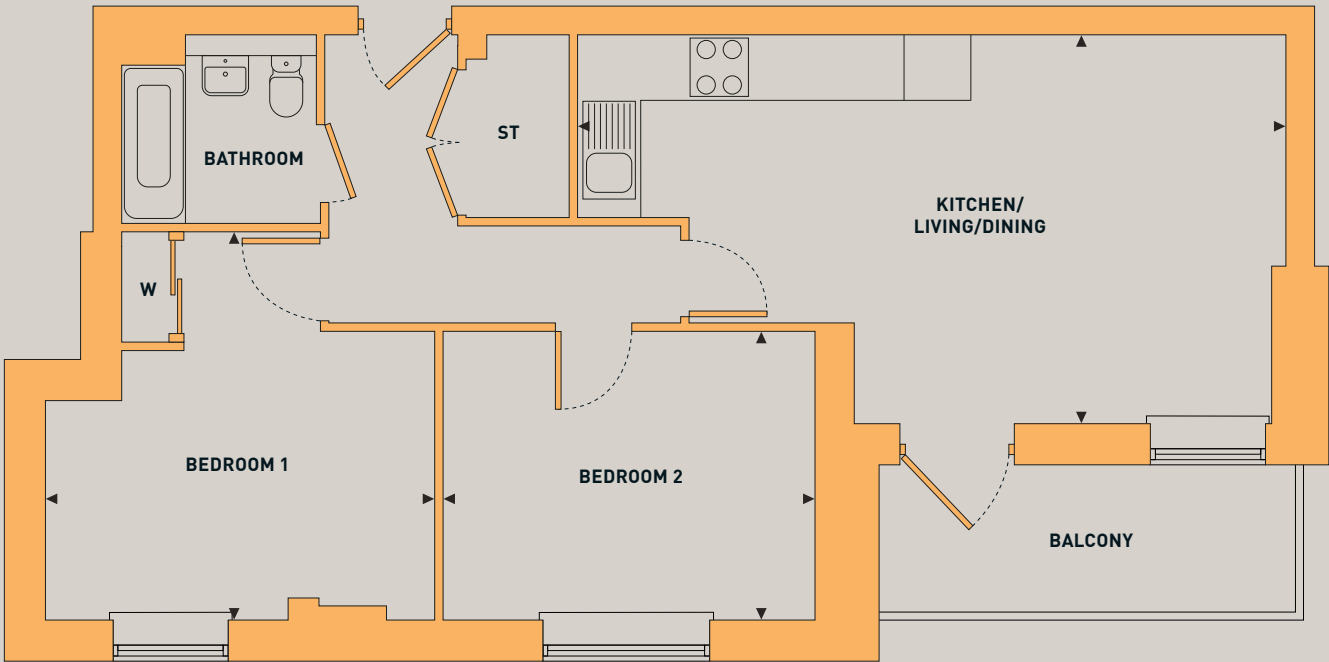
TOTAL AREA 71.9M² 774FT²

Floorplans shown are for approximate measurements only. Exact layouts and sizes may vary. All measurements may vary within a tolerance of 5%. The dimensions are not intended to be used for carpet sizes, appliance sizes or items of furniture.

TYPE D5

TWO BEDROOM APARTMENT

SECOND FLOOR: PLOT 422
THIRD FLOOR: PLOT 430
FOURTH FLOOR: PLOT 438



Key

ST STORAGE
W WARDROBE

KITCHEN/ LIVING/DINING	7.6M X 4.1M	24'11" X 13'5"
BEDROOM 1	4.2M X 4.1M	13'9" X 13'5"
BEDROOM 2	4.0M X 3.1M	13'1" X 10'2"

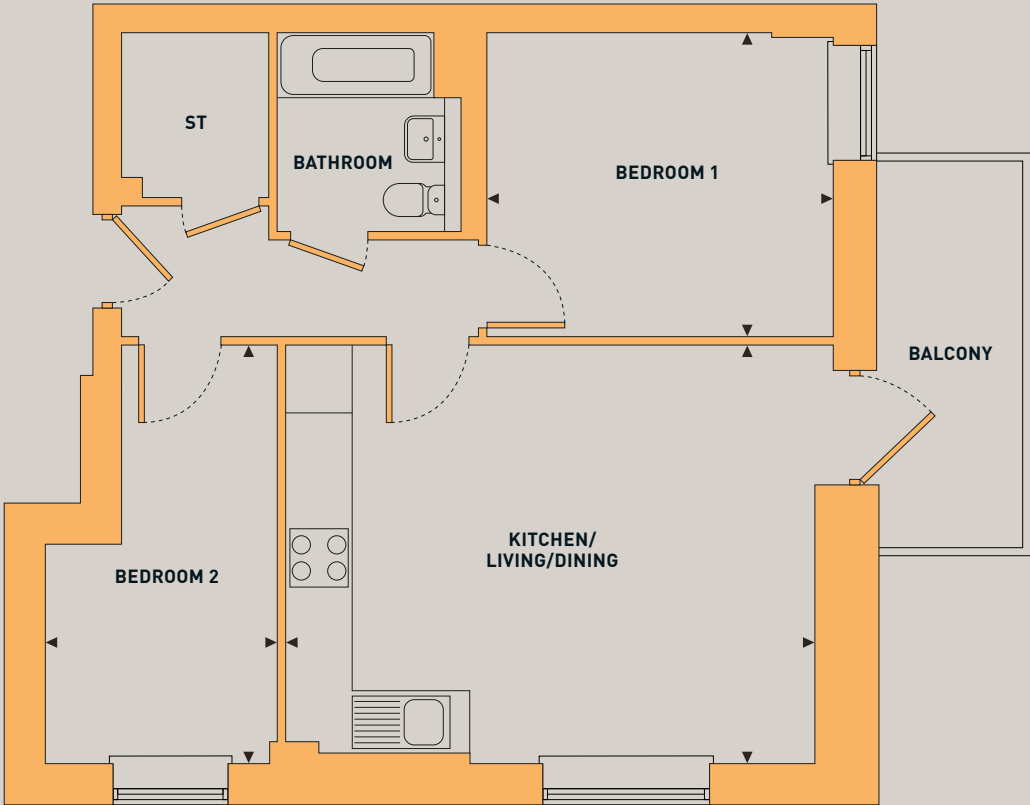
TOTAL AREA 70.1M² 754FT²

Floorplans shown are for approximate measurements only. Exact layouts and sizes may vary. All measurements may vary within a tolerance of 5%. The dimensions are not intended to be used for carpet sizes, appliance sizes or items of furniture.

TYPE D9

TWO BEDROOM APARTMENT

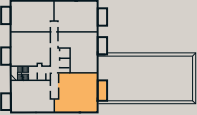
FIFTH FLOOR: PLOT 444



Key

ST STORAGE

KITCHEN/ LIVING/DINING	5.9M X 4.5M	19'4" X 14'9"
BEDROOM 1	3.7M X 3.2M	12'2" X 10'6"
BEDROOM 2	4.5M X 2.5M	14'9" X 8'2"



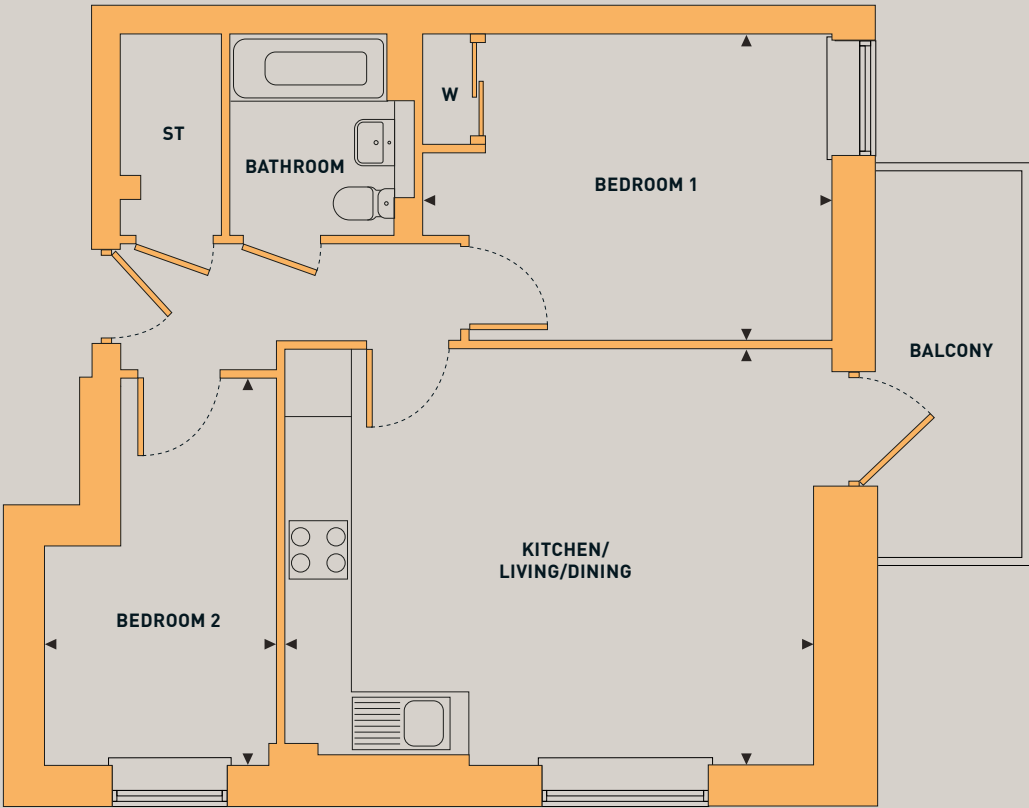
TOTAL AREA	62.4M ²	671FT ²
------------	--------------------	--------------------

Floorplans shown are for approximate measurements only. Exact layouts and sizes may vary. All measurements may vary within a tolerance of 5%. The dimensions are not intended to be used for carpet sizes, appliance sizes or items of furniture.

TYPE D12

TWO BEDROOM APARTMENT

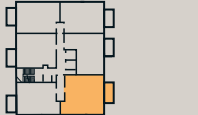
SIXTH FLOOR: PLOT 450
SEVENTH FLOOR: PLOT 456
EIGHTH FLOOR: PLOT 462
NINTH FLOOR: PLOT 468
TENTH FLOOR: PLOT 474
ELEVENTH FLOOR: PLOT 480



Key

ST STORAGE
W WARDROBE

KITCHEN/ LIVING/DINING	5.9M X 4.4M	19'4" X 14'5"
BEDROOM 1	4.4M X 3.2M	14'5" X 10'6"
BEDROOM 2	4.1M X 2.5M	13'5" X 8'2"



TOTAL AREA	61.8M ²	665FT ²
------------	--------------------	--------------------

Floorplans shown are for approximate measurements only. Exact layouts and sizes may vary. All measurements may vary within a tolerance of 5%. The dimensions are not intended to be used for carpet sizes, appliance sizes or items of furniture.

TYPE D13

THREE BEDROOM APARTMENT

GROUND FLOOR: PLOT 405

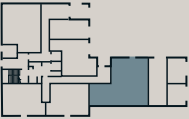


Key

- ST STORAGE
- W WARDROBE
- W/C CLOAKROOM

KITCHEN/ LIVING/DINING	8.7M X 4.1M	28'7" X 13'5"
BEDROOM 1	3.6M X 3.5M	11'10" X 11'6"
BEDROOM 2	4.4M X 2.8M	14'5" X 9'2"
BEDROOM 3	3.3M X 2.3M	10'10" X 7'7"

TOTAL AREA	86.4M²	929FT²
------------	--------	--------



Floorplans shown are for approximate measurements only. Exact layouts and sizes may vary. All measurements may vary within a tolerance of 5%. The dimensions are not intended to be used for carpet sizes, appliance sizes or items of furniture.



Computer generated image is indicative only.



SPECIFICATION

Computer generated image is indicative only.

Our homes all meet the highest modern standards, without compromise on quality, visual appeal or sustainability. We are proud to put our name to them.

ATTENTION TO DETAIL

KITCHENS

- Individually designed contemporary kitchen units in matt grey
- Integrated AEG combi microwave oven
- Appliances to include oven, hob, washer/dryer, extractor, integrated dishwasher and integrated fridge freezer
- Amico Spacia Acoustic Sun Bleached Oak floor tiles
- Black toughened glass splashback to hob
- Under cabinet lighting
- Quartz worktop

BATHROOMS

- Contemporary white sanitaryware
- Wall tiling to wet areas and full height tiling around bath
- Chrome towel rail
- Glazed shower screen
- Illuminated mirrored cabinet with shaver socket
- Porcelain floor tiles

LIGHTING AND ELECTRICAL

- Downlights to kitchen and bathrooms
- Pendant lights to remaining rooms and living spaces

OTHER FEATURES

- Carpets to bedrooms
- Walls painted in Dulux Timeless matt emulsion
- Woodwork painted in Dulux Satinwood
- Fitted wardrobe to master bedroom
- Video entry phone

Your attention is drawn to the fact that it may not be possible to provide the exact products as referred to in the specification. In such cases, a similar alternative will be provided. Latimer reserves the right to make these changes as required.



MORE ABOUT LATIMER

Why buy with Latimer?

Latimer is the development arm of Clarion Housing Group, developing private homes in thriving, mixed-use communities.

Clarion Housing Group is the UK's largest provider of affordable housing, with over 125,000 homes and more than 360,000 residents across the country. As part of Clarion Housing Group, Latimer has an unrivalled balance sheet with net assets of over £7bn and a turnover of close to £1bn per annum. For the past 125 years, we've been building communities that work for the long-term.

The Clarion story started with William Sutton, a 19th century entrepreneur who gifted his entire fortune (£230 million in today's money) to build affordable housing across major cities in the UK. We have been delivering on his legacy ever since. The majority of homes we build will always be for affordable tenures, but building homes for private sale is crucial for our business to develop both mixed sustainable communities and recycling any profits we make from private sales back into building and maintaining more affordable homes.

What sets Latimer apart is our long-term commitment to the people who live in our homes. We don't build and then simply move onto the next site; we create places for families to thrive and all of our work is built on strong financial foundations, meaning we are a dependable partner.

We also want every Latimer community to be socially and environmentally sustainable. That means a consistent commitment to high quality and low carbon properties.

Our model is very different to other developers. We don't have shareholders, so we don't face short-term demands to make profit at any cost. Instead, we are driven by our commitment to quality, community and places that succeed.

As a Group, we have a committed development pipeline of over 16,000 new homes and have ambitions to become a top ten home builder in the UK over the next 5-7 years. If you buy a Latimer home, you will be buying into an organisation with more than 125 years of history and an enduring commitment to building communities that succeed.

Whatever the stage of your property-owning journey, we're here for you. Read on to find out how we can help you get the keys to your very own home.



SHARED OWNERSHIP

Buying a home with Shared Ownership gives you an accessible and flexible way to buy your dream home.

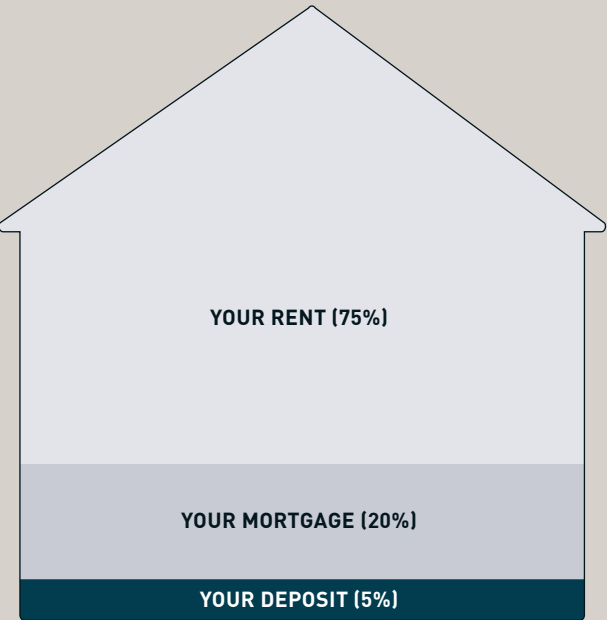
With Shared Ownership, you buy a share of your home – as much as you can afford – starting from as little as 10%, and rising up to 75% of the property’s value. You then pay subsidised rent to Clarion Housing Association on the remaining share of your home. The scheme is sometimes called part buy, part rent.

The deposit required for a Shared Ownership mortgage is lower than if you were purchasing a property outright. It is usually 5–10% the initial share you are purchasing, rather than on the full value of the property. You only need a mortgage to cover the price of your share.

Once you’ve moved in, you can, if you wish, begin to buy more shares in your home until you own it outright. This process is known as staircasing. It is a good idea to start thinking about staircasing even before you buy, so you have a plan for owning more of your property. We have tools available to help you get an idea of the current value of your home and to understand how much you can afford to buy.

There’s more information on Shared Ownership in the step-by-step guide that you can find on the Latimer website: latimerhomes.com

EXAMPLE: PURCHASING 25% OF A PROPERTY VALUED AT £200,000



1 YOUR DEPOSIT

Your 25% share of this property would be worth £50,000, meaning you would need a 5% mortgage deposit of £2,500.

2 YOUR MORTGAGE

A mortgage lender could loan you the remaining £47,500 to make up the full value of your 25% share.

3 YOUR RENT

You will then pay subsidised rent to Latimer on the remaining 75% of the property you don’t own.

Eligibility for Shared Ownership

To be eligible for Shared Ownership, you will need to meet certain requirements set by Homes England.

You could be eligible if:

- You are at least 18 years old
- You cannot afford to buy a home that suits your household’s needs on the open market
- You have savings to cover a mortgage deposit and can obtain a mortgage
- Your household earns £90,000 or less
- You are a first-time buyer

If you already own a home and need to move but cannot afford to – or you have equity from a recent sale – please contact us, as there are some circumstances under which you may still be eligible.

In some cases, due to criteria set by local authorities, you may be asked to show a connection to the local area where you’re looking to buy. For instance, you might currently live and/or work there.

Maximum incomes and further eligibility requirements may vary for each scheme.

Interested in buying with Shared Ownership?

Your first step is to visit www.latimerhomes.com to browse all the Shared Ownership properties in the areas you are interested in. If you see something you like, register your interest on the website by entering your contact details and a few basic facts to help us assess your eligibility for Shared Ownership. We will then put you in touch with an independent Mortgage Advisor who will assess whether the purchase is affordable for you and take you through all your options.

MAKING A POSITIVE IMPACT

The homes we create at Latimer are homes for life, meaning we deliver more to the communities our homes are part of, and do more to protect the environment they're located in.



Environmental impact

Our projects are future-facing, with homes designed and built to keep our residents and the world they live in healthy. From city centres to rural retreats, Latimer developments will always maximise fresh air and green spaces, and protect local wildlife and natural assets. As an intrinsic part of our efforts to minimise environmental impact, from 2025, 100% of our new homes are fossil fuel free.



Economic impact

All developers have a legal obligation to the local community, and the planning process considers every development's potential for bringing prosperity and opportunity as well as the nuts and bolts of the build.

At Latimer however, we deliver more than what is required by law. Latimer developments also benefit communities through job generation, green places, fresh faces and vibrant social spaces. Our economic impact starts when we buy the land, and continues far into the future through our customers and the relationships we build.



Social impact

We create spaces that generate social energy. By this, we mean that we design high-quality homes and spaces that help foster a sense of community, building a sense of inclusion, safety and happiness. Communities are created in the shared spaces, the green spaces, the open doors and the passing places. When you say hello to your neighbour in the gardens or you share a lift to your floor, these are the moments that generate relationships. At Latimer, we spend the same time and energy on creating those spaces as we do on the design, layout and production of our homes.



OUR DEVELOPMENTS

Latimer builds homes for both outright sale and Shared Ownership throughout the nation, from contemporary apartments to family homes, in locations ranging from rural landscapes to thriving towns and iconic city centres.

The Latimer brand is synonymous with high-quality design and a commitment to excellence. This encompasses the locations we choose as well as the beautiful craftsmanship and the materials we use. We partner with architects, designers and contractors who share our values.

Once the homes are built and occupied, our customer service and aftercare continue to uphold our core values of providing happiness and delivering more.

These are a selection of our developments, please visit latimerhomes.com to explore more.



Alta at Consort Place Canary Wharf

Alta provides affordable city living in the heart of London's famous Canary Wharf. Enjoy fantastic local amenities and some of the capital's best transport connections. A range of 1 and 2 bedroom apartments is available for Shared Ownership, from £135,250 for a 25% share of full market value.



Barley Green Saffron Walden

A collection of 2, 3 and 4 bedroom homes, nestled in the charming market town of Saffron Walden. These contemporary homes offer the perfect blend of modern living and timeless style, designed to cater to the diverse needs of today's homeowners. With options for 2, 3 and 4 bedroom homes, all available with Shared Ownership, Barley Green is the ideal setting for families, couples, and individuals alike.



The Orchard Little Dunmow

A brand new development of 1, 2, 3 and 4 bedroom homes, offering contemporary living in the rural idyll of Little Dunmow, nestled in between Braintree and Bishop's Stortford and surrounded by the rolling Essex countryside. Ideal for first-time buyers, couples and young families, there's something for everyone here.

A WORD FROM OUR CUSTOMERS



First home with a view

Fashion designer Siri Saritasurarak secured a coveted Zone 1 location in a prestigious building in London's Canary Wharf as her entry into the London property market. Situated on the top floor at Consort Place by Latimer, the 1 bedroom apartment is now a home and headquarters for her fashion brand with panoramic views of the city.

Having lived in this area of the city for 10 years, Siri felt part of the community in Canary Wharf with many local friends. With sights set on buying her first home and staying close to the life she has built, she began her property search. With Shared Ownership, she now enjoys a sense of stability and security, along with the luxury of personal space in one of London's most sought-after areas.

Siri explains: "I first viewed this apartment in September 2023, after exploring a few other properties in the area, as well as some in Zone 4 to compare space. However, it wasn't until I discovered Consort Place that I finally felt the connection I had been searching for in a home. It's absolutely incredible and without Shared Ownership, there's no way I could afford this prime location."

Without Shared Ownership, there is no way I could afford this address. Here, I pay significantly less a month and also have the security of owning 25% of the property. There's no question that this route to owning a home in a central London location makes sense.

Driven by her entrepreneurial spirit, fashion expertise, and personal journey of discovering strength through fitness and wellness during challenging times, Siri launched her own activewear brand, RAIA, in 2023. Now running an independent boutique, Siri designs the collections herself, blending her qualifications with years of experience as a fashion designer.

Busy running and growing her business, Siri works from home and benefits from being in such incredible surroundings. She continues: "I find that my home environment gives me inspiration. As well as the impressive views from my apartment, I can find a change of scenery in the communal area on the 30th floor, which has a terrace and large indoor area, which is great for additional work space or somewhere to spend time with friends."



GET IN TOUCH



LATIMER
by Clarion Housing Group

CALL US
0300 100 0309

EMAIL US
SHARED.OWNERSHIP@MYCLARIONHOUSING.COM

FIND US
WWW.LATIMERHOMES.COM

VISIT US
706-720 HIGH ROAD, ILFORD, IG3 8RS

PLEASE NOTE: Viewings are by appointment only,
please speak to our sales team for further information.

DISCLAIMER

Latimer has taken all reasonable care in the preparation of the information given in this brochure. However, this information is subject to change and has been prepared solely for the purpose of providing general guidance. Latimer does not therefore warrant the accuracy or completeness of this information. Particulars are given for illustrative purposes only. Latimer undertakes continuous product development and any information given relating to our products may vary from time to time. As a result, information on such products is given for general guidance only and does not constitute any form of contract or warranty on our part. The information and particulars set out within this brochure do not constitute, nor constitute part of, a formal offer, invitation or contract (whether from Latimer or any of its related subsidiaries or affiliates) to acquire the relevant property. For the reasons mentioned above, no information contained in this brochure is to be relied upon. In particular, all plans, perspectives, descriptions, dimensions and measurements are approximate and provided for guidance only. Such information is given without responsibility on the part of Latimer. Latimer supports the development of mixed tenure developments, and is proud to provide homes for outright sale and shared ownership. We may change the tenure of some homes subject to demand. Latimer by Clarion Housing Group is the development arm of Clarion Housing Association Limited and Latimer Developments Limited. Clarion Housing Association Limited is registered with Regulator of Social Housing (4865); and is a charitable Community Benefit Society under the Co-operative and Community Benefit Societies Act 2014 (7686) VAT no 675646394. Clarion Housing Association Limited's registered office is at 5th Floor, Greater London House, Hampstead Road, NW1 7QX.



LATIMER
by Clarion Housing Group

LATIMERHOMES.COM