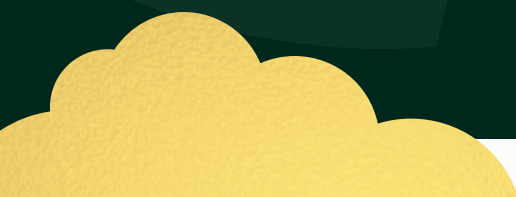




# Development Layout

Orbit Homes at Rosewood, Herne Bay



[orbithomes.org.uk](http://orbithomes.org.uk)

 01227 209948

 [rosewood@orbit.org.uk](mailto:rosewood@orbit.org.uk)





## Shared Ownership

- **The Camellia, The Wisteria & The Clematis**  
2 bedroom apartment
- **The Cypress**  
2 bedroom house
- **The Willow**  
3 bedroom house
- **The Birch**  
3 bedroom house
- **The Hawthorn**  
3 bedroom house
- **The Chestnut**  
4 bedroom house

- **Rent To Buy**
- **Affordable Rent**
- **Private Sale First Homes**

- V Visitor Parking
- RCP Refuse Collection Point
- C/S Cycle Store
- P/S Pump Station
- S/S Sub Station
- LAP Local Area for Play
- Cycle Shed

Development layout is not shown to scale and is given as a guide only. Orbit has a policy of continuous improvement and reserves the right to make changes at any time. Please ask your Sales Consultant for current information when reserving your new home. Information correct at time of going to print. \*Phase 2 layout, plots, tenure and types may be subject to change.



**Off Bullockstone Road,  
Herne Bay,  
Kent  
CT6 7NR**

**orbithomes.org.uk**

**☎ 01227 209948**

**✉ rosewood@orbit.org.uk**

Head Office: Orbit, Garden Court, Harry Weston Road, Binley Business Park, Coventry CV3 2SU. Orbit is an exempt charity, registered under the Industrial and Provident Societies Act 1965.

Orbit has a policy of continuous improvement and reserves the right to alter plans, specification, elevational treatments and positions of doors and windows at any time. Orbit reserves the right to change the tenure of any of these homes subject to market conditions and without notice. Information contained within this brochure is a general indication of the development and is not intended to be construed as part of any legal contract or contain any representation of fact upon which any party is entitled to rely. Information correct at time of going to print in May 2025. 06690-01.