

# The Willows

AT STORTFORD FIELDS

## 2 BEDROOM HOUSE

Shared Ownership from £184,500  
for a 45% share

**Property overview** A brand new 2 bedroom house in Bishop's Stortford, a thriving market town with great shopping, arts, schools, and medical facilities. Surrounded by countryside, it offers easy access to Cambridge, Newmarket, Ely, and London. Excellent transport links include rail, motorway, and an airport. Enjoy Hatfield Forest, historic sites, and cycling along the River Stort towpath for relaxation and adventure.



### Specification

- Symphony kitchen, with silestone quartz worktop and upstands
- Integrated extractor, hob and oven, fridge freezer, washing machine and dishwasher
- Glass shower screen & thermostatic mixer tap
- Chrome heated towel rail
- Mirror to bathroom above basin with shaver socket
- Vinyl flooring to kitchen, bathroom and WC
- Contemporary Oak Grey Vinyl flooring to living room & hall
- Fitted carpet to bedrooms, landing and staircase
- LED downlights to living areas, dining area and bathroom
- Low energy LED pendant lighting to hallway, landing and bedrooms
- Combination boiler
- Turf to rear garden, with outside wall light and tap
- 990-year lease
- Predicted energy rating: B

### Features include:



2 bedroom house



Allocated parking



Located in Bishops Stortford



Superb specification

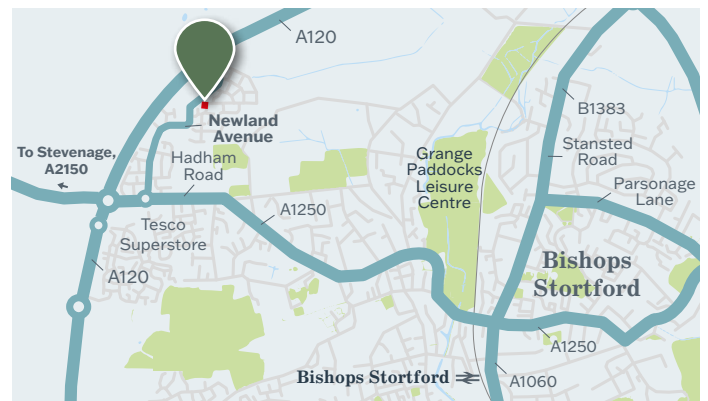


1.3 miles from Bishops Stortford station



Integrated appliances

**Location:** Newland Avenue, Bishop's Stortford



Register your interest today

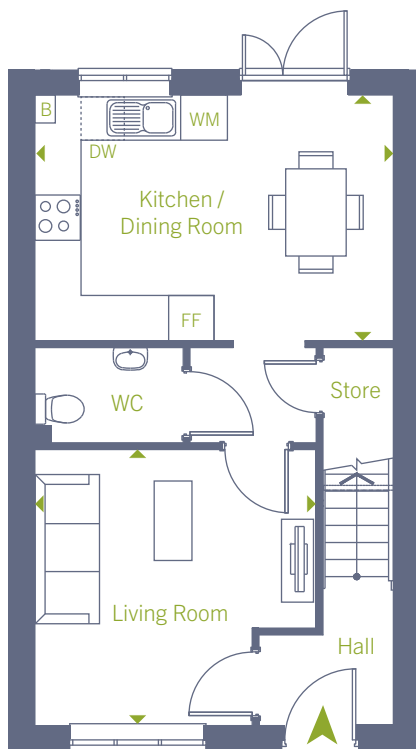
Call: 0207 539 3745 Email: [b3@redloft.co.uk](mailto:b3@redloft.co.uk)

Visit: [b3athome.co.uk/find-a-home/the-willows/](http://b3athome.co.uk/find-a-home/the-willows/) Sat Nav: CM23 2BD

Disclaimer: We have made every effort to accurately describe the property. However, prospective buyers should treat these details as a general guide, not as definitive representations or facts. All room dimensions are subject to a 5% tolerance and may vary from plot to plot. Furniture layouts are for illustrative purposes and are indicative only.

**B3**  
at home

## Plots 314 - 2 bedroom house



Ground floor



First floor

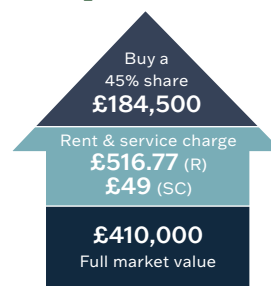


### Dimensions

Kitchen / Dining Room	4.79m x 3.29m	15' 9" x 10' 10"
Living Room	3.76m x 3.69m	12' 4" x 12' 1"
Bedroom 1	4.79m x 3.88m	15' 9" x 12' 8"
Bedroom 2	4.79m x 3.39m	15' 9" x 11' 2"
<b>Total Gross Internal Area</b>	<b>79.1 m<sup>2</sup> / 851 ft<sup>2</sup></b>	

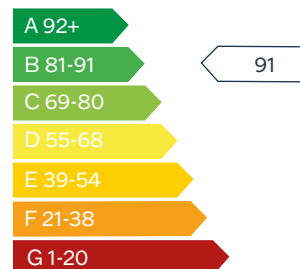
FF – Fridge/Freezer | DW – Dishwasher | WD – Washer/Dryer |  
W – Wardrobe | B – Boiler

### Shared Ownership Example



Rent & service charges are monthly.  
Rent charged at 2.75% on unsold share.

### Predicted Energy Assessment



Register your interest today

Call: 0207 539 3745 Email: [b3@redloft.co.uk](mailto:b3@redloft.co.uk)

Visit: [b3athome.co.uk/find-a-home/the-willows/](http://b3athome.co.uk/find-a-home/the-willows/) Sat Nav: CM23 2BD

Disclaimer: We have made every effort to accurately describe the property. However, prospective buyers should treat these details as a general guide, not as definitive representations or facts. All room dimensions are subject to a 5% tolerance and may vary from plot to plot. Furniture layouts are for illustrative purposes and are indicative only.

# The Willows

AT STORTFORD FIELDS

## 2 BEDROOM HOUSE

Shared Ownership from £184,500  
for a 45% share

**Property overview** A brand new 2 bedroom house in Bishop's Stortford, a thriving market town with great shopping, arts, schools, and medical facilities. Surrounded by countryside, it offers easy access to Cambridge, Newmarket, Ely, and London. Excellent transport links include rail, motorway, and an airport. Enjoy Hatfield Forest, historic sites, and cycling along the River Stort towpath for relaxation and adventure.



### Specification

- Symphony kitchen, with silestone quartz worktop and upstands
- Integrated extractor, hob and oven, fridge freezer, washing machine and dishwasher
- Glass shower screen & thermostatic mixer tap
- Chrome heated towel rail
- Mirror to bathroom above basin with shaver socket
- Vinyl flooring to kitchen, bathroom and WC
- Contemporary Oak Grey Vinyl flooring to living room & hall
- Fitted carpet to bedrooms, landing and staircase
- LED downlights to living areas, dining area and bathroom
- Low energy LED pendant lighting to hallway, landing and bedrooms
- Combination boiler
- Turf to rear garden, with outside wall light and tap
- 990-year lease
- Predicted energy rating: B

### Features include:



2 bedroom house



Allocated parking



Located in Bishops Stortford



Superb specification

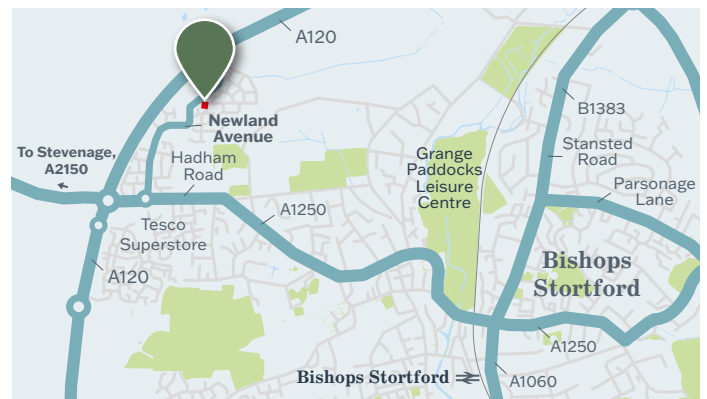


1.3 miles from Bishops Stortford station



Integrated appliances

**Location:** Newland Avenue, Bishop's Stortford



Register your interest today

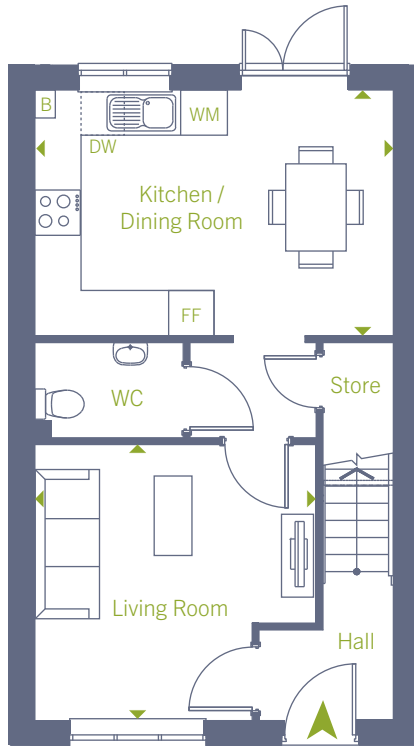
Call: 0207 539 3745 Email: [b3@redloft.co.uk](mailto:b3@redloft.co.uk)

Visit: [b3athome.co.uk/find-a-home/the-willows/](http://b3athome.co.uk/find-a-home/the-willows/) Sat Nav: CM23 2BD

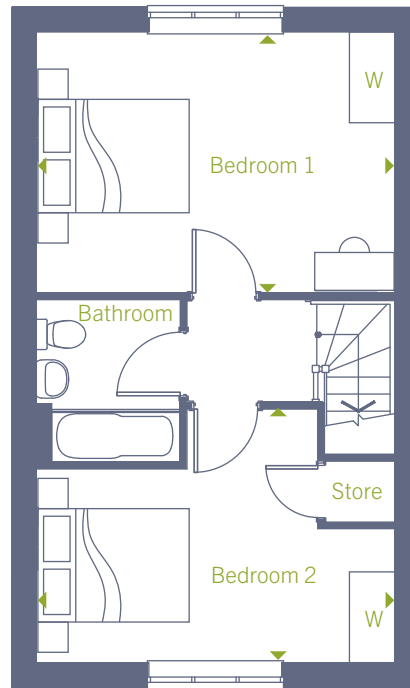
Disclaimer: We have made every effort to accurately describe the property. However, prospective buyers should treat these details as a general guide, not as definitive representations or facts. All room dimensions are subject to a 5% tolerance and may vary from plot to plot. Furniture layouts are for illustrative purposes and are indicative only.

**B3**  
at home

## Plots 315 - 2 bedroom house



Ground floor



First floor

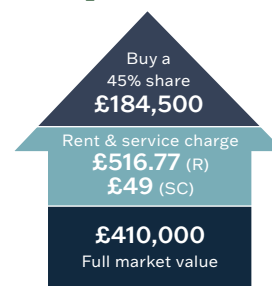


### Dimensions

Kitchen / Dining Room	4.79m x 3.29m	15' 9" x 10' 10"
Living Room	3.76m x 3.69m	12' 4" x 12' 1"
Bedroom 1	4.79m x 3.88m	15' 9" x 12' 8"
Bedroom 2	4.79m x 3.39m	15' 9" x 11' 2"
<b>Total Gross Internal Area</b>	<b>79.1 m<sup>2</sup> / 851 ft<sup>2</sup></b>	

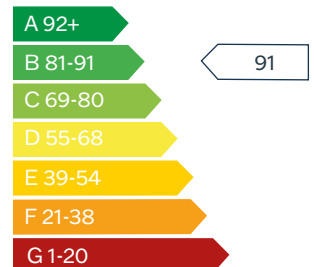
FF – Fridge/Freezer | DW – Dishwasher | WD – Washer/Dryer |  
W – Wardrobe | B – Boiler

### Shared Ownership Example



Rent & service charges are monthly.  
Rent charged at 2.75% on unsold share.

### Predicted Energy Assessment



Register your interest today

Call: 0207 539 3745 Email: [b3@redloft.co.uk](mailto:b3@redloft.co.uk)

Visit: [b3athome.co.uk/find-a-home/the-willows/](http://b3athome.co.uk/find-a-home/the-willows/) Sat Nav: CM23 2BD

Disclaimer: We have made every effort to accurately describe the property. However, prospective buyers should treat these details as a general guide, not as definitive representations or facts. All room dimensions are subject to a 5% tolerance and may vary from plot to plot. Furniture layouts are for illustrative purposes and are indicative only.

# The Willows

AT STORTFORD FIELDS

## 3 BEDROOM HOUSE

Shared Ownership from £218,250  
for a 45% share

**Property overview** A brand new 3 bedroom house in Bishop's Stortford, a thriving market town with great shopping, arts, schools, and medical facilities. Surrounded by countryside, it offers easy access to Cambridge, Newmarket, Ely, and London. Excellent transport links include rail, motorway, and an airport. Enjoy Hatfield Forest, historic sites, and cycling along the River Stort towpath for relaxation and adventure.



### Specification

- Symphony kitchen, with silestone quartz worktop and upstands
- Integrated extractor, hob and oven, fridge freezer, washing machine and dishwasher
- Glass shower screen & thermostatic mixer tap
- Chrome heated towel rail
- Mirror to bathroom above basin with shaver socket
- Vinyl flooring to kitchen, bathroom and WC
- Contemporary Oak Grey Vinyl flooring to living room & hall
- Fitted carpet to bedrooms, landing and staircase
- LED downlights to living areas, dining area and bathroom
- Low energy LED pendant lighting to hallway, landing and bedrooms
- Combination boiler
- Turf to rear garden, with outside wall light and tap
- 990-year lease
- Predicted energy rating: B

### Features include:



3 bedroom house



Allocated parking



Located in Bishops Stortford



Superb specification

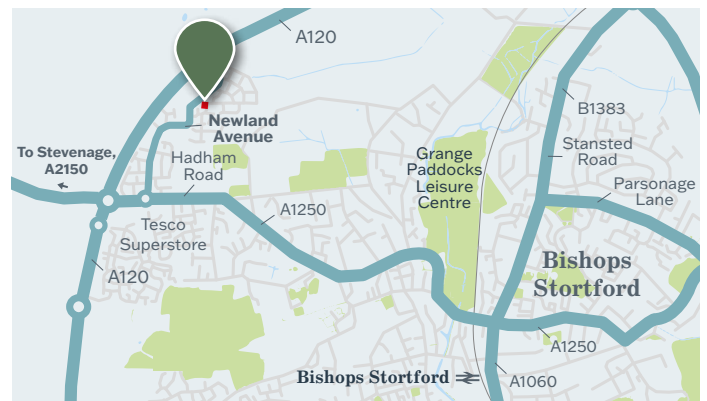


1.3 miles from Bishops Stortford station



Integrated appliances

**Location:** Newland Avenue, Bishop's Stortford



Register your interest today

Call: 0207 539 3745 Email: [b3@redloft.co.uk](mailto:b3@redloft.co.uk)

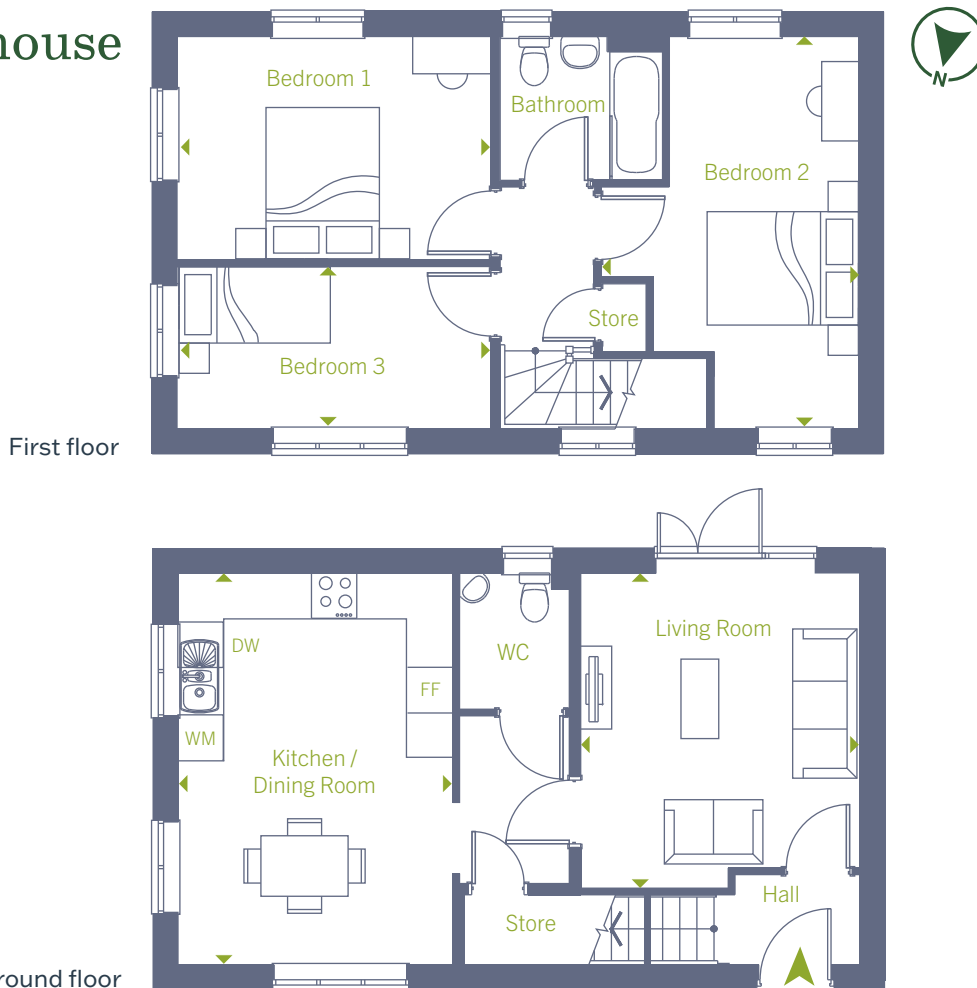
Visit: [b3athome.co.uk/find-a-home/the-willows/](http://b3athome.co.uk/find-a-home/the-willows/) Sat Nav: CM23 2BD

Disclaimer: We have made every effort to accurately describe the property. However, prospective buyers should treat these details as a general guide, not as definitive representations or facts. All room dimensions are subject to a 5% tolerance and may vary from plot to plot. Furniture layouts are for illustrative purposes and are indicative only.

**B3**  
at home



## Plot 322 - 3 bedroom house

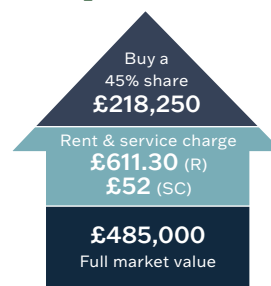


### Dimensions

Kitchen / Dining Room	5.24m x 3.67m	17' 2" x 12' 1"
Living Room	4.21m x 3.74m	13' 10" x 12' 3"
Bedroom 1	4.20m x 2.99m	13' 9" x 9' 10"
Bedroom 2	5.24m x 2.54m	17' 2" x 8' 4"
Bedroom 3	4.20m x 2.19m	13' 9" x 7' 2"
<b>Total Gross Internal Area</b>	<b>93.6 m<sup>2</sup> / 1,008 ft<sup>2</sup></b>	

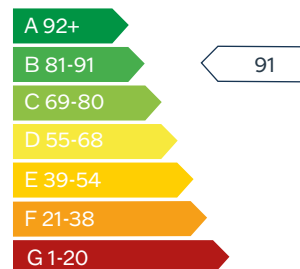
FF – Fridge/Freezer | DW – Dishwasher | WD – Washer/Dryer |  
W – Wardrobe | B – Boiler

### Shared Ownership Example



Rent & service charges are monthly.  
Rent charged at 2.75% on unsold share.

### Predicted Energy Assessment



Register your interest today

Call: 0207 539 3745 Email: [b3@redloft.co.uk](mailto:b3@redloft.co.uk)

Visit: [b3athome.co.uk/find-a-home/the-willows/](http://b3athome.co.uk/find-a-home/the-willows/) Sat Nav: CM23 2BD

Disclaimer: We have made every effort to accurately describe the property. However, prospective buyers should treat these details as a general guide, not as definitive representations or facts. All room dimensions are subject to a 5% tolerance and may vary from plot to plot. Furniture layouts are for illustrative purposes and are indicative only.

# The Willows

AT STORTFORD FIELDS

## 1 BEDROOM APARTMENT

Shared Ownership from £122,625  
for a 45% share

**Property overview** A brand new 1 bedroom apartment in Bishop's Stortford, a thriving market town with great shopping, arts, schools, and medical facilities. Surrounded by countryside, it offers easy access to Cambridge, Newmarket, Ely, and London. Excellent transport links include rail, motorway, and an airport. Enjoy Hatfield Forest, historic sites, and cycling along the River Stort towpath for relaxation and adventure.



### Specification

- Symphony kitchen, with silestone quartz worktop and upstands
- Integrated extractor, hob and oven, fridge freezer, washing machine and dishwasher
- Glass shower screen & thermostatic mixer tap
- Chrome heated towel rail
- Mirror to bathroom above basin with shaver socket
- Vinyl flooring to kitchen, bathroom and WC
- Contemporary Oak Grey Vinyl flooring to living room & hall
- Fitted carpet to bedrooms, landing and staircase
- LED downlights to living areas, dining area and bathroom
- Low energy LED pendant lighting to hallway, landing and bedrooms
- Combination boiler
- Private balcony / terrace to all apartments
- 990-year lease
- Predicted energy rating: B

### Features include:



1 bedroom apartment



Allocated parking



Located in Bishops Stortford



Superb specification

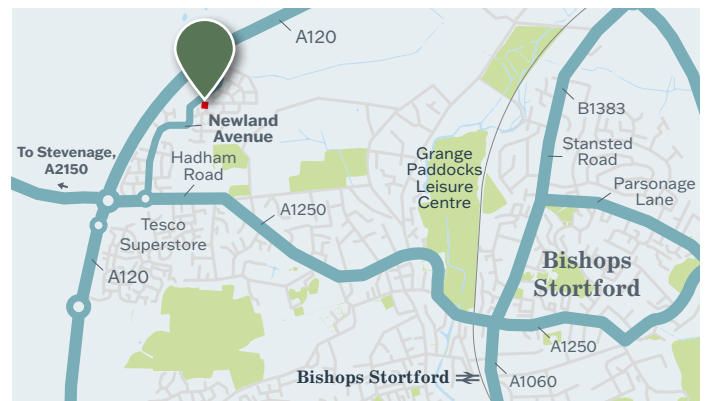


1.3 miles from Bishops Stortford station



Integrated appliances

**Location:** Newland Avenue, Bishop's Stortford



Register your interest today

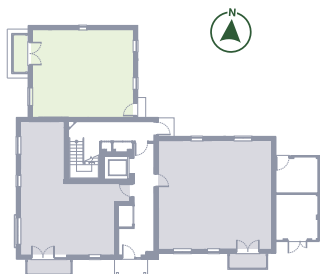
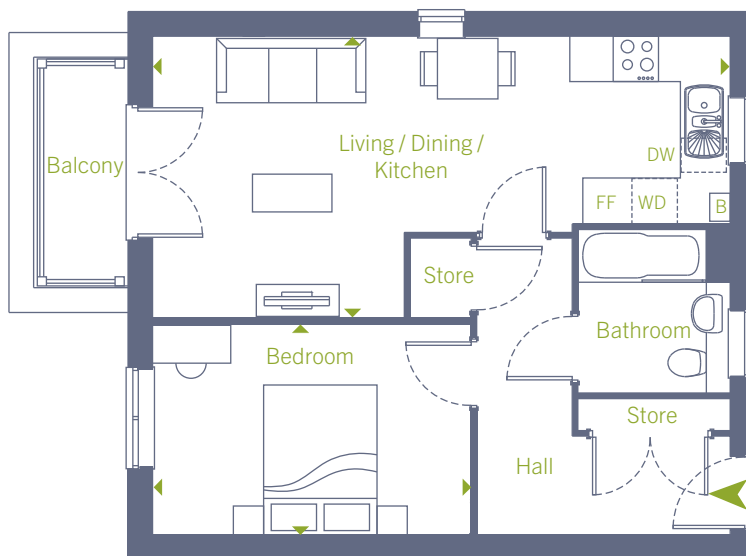
Call: 0207 539 3745 Email: [b3@redloft.co.uk](mailto:b3@redloft.co.uk)

Visit: [b3athome.co.uk/find-a-home/the-willows/](http://b3athome.co.uk/find-a-home/the-willows/) Sat Nav: CM23 2BD

Disclaimer: We have made every effort to accurately describe the property. However, prospective buyers should treat these details as a general guide, not as definitive representations or facts. All room dimensions are subject to a 5% tolerance and may vary from plot to plot. Furniture layouts are for illustrative purposes and are indicative only.

**B3**  
at home

## Plot 362 - 1 bedroom apartment



Ground floor

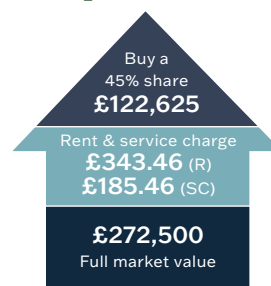
← NEWLAND AVENUE

### Dimensions

Kitchen/Living/Dining	7.69m x 3.70m	25' 3" x 12' 1"
Bedroom	4.25m x 2.83m	13' 11" x 9' 4"
<b>Total Gross Internal Area</b>	<b>52.1 m<sup>2</sup> / 560 ft<sup>2</sup></b>	
Balcony	2.84 m <sup>2</sup> / 30.6 ft <sup>2</sup>	

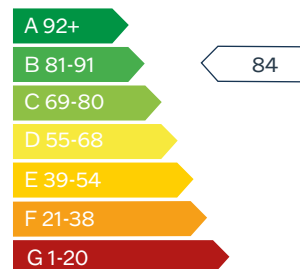
FF – Fridge/Freezer | DW – Dishwasher | WD – Washer/Dryer |  
W – Wardrobe | B – Boiler

### Shared Ownership Example



Rent & service charges are monthly.  
Rent charged at 2.75% on unsold share.

### Predicted Energy Assessment



Register your interest today

Call: 0207 539 3745 Email: [b3@redloft.co.uk](mailto:b3@redloft.co.uk)

Visit: [b3athome.co.uk/find-a-home/the-willows/](http://b3athome.co.uk/find-a-home/the-willows/) Sat Nav: CM23 2BD

Disclaimer: We have made every effort to accurately describe the property. However, prospective buyers should treat these details as a general guide, not as definitive representations or facts. All room dimensions are subject to a 5% tolerance and may vary from plot to plot. Furniture layouts are for illustrative purposes and are indicative only.



# The Willows

AT STORTFORD FIELDS

## 1 BEDROOM APARTMENT

Shared Ownership from £122,625  
for a 45% share

**Property overview** A brand new 1 bedroom apartment in Bishop's Stortford, a thriving market town with great shopping, arts, schools, and medical facilities. Surrounded by countryside, it offers easy access to Cambridge, Newmarket, Ely, and London. Excellent transport links include rail, motorway, and an airport. Enjoy Hatfield Forest, historic sites, and cycling along the River Stort towpath for relaxation and adventure.



### Specification

- Symphony kitchen, with silestone quartz worktop and upstands
- Integrated extractor, hob and oven, fridge freezer, washing machine and dishwasher
- Glass shower screen & thermostatic mixer tap
- Chrome heated towel rail
- Mirror to bathroom above basin with shaver socket
- Vinyl flooring to kitchen, bathroom and WC
- Contemporary Oak Grey Vinyl flooring to living room & hall
- Fitted carpet to bedrooms, landing and staircase
- LED downlights to living areas, dining area and bathroom
- Low energy LED pendant lighting to hallway, landing and bedrooms
- Combination boiler
- Private balcony / terrace to all apartments
- 990-year lease
- Predicted energy rating: B

### Features include:



1 bedroom  
apartment



Allocated  
parking



Located in  
Bishops Stortford



Superb  
specification

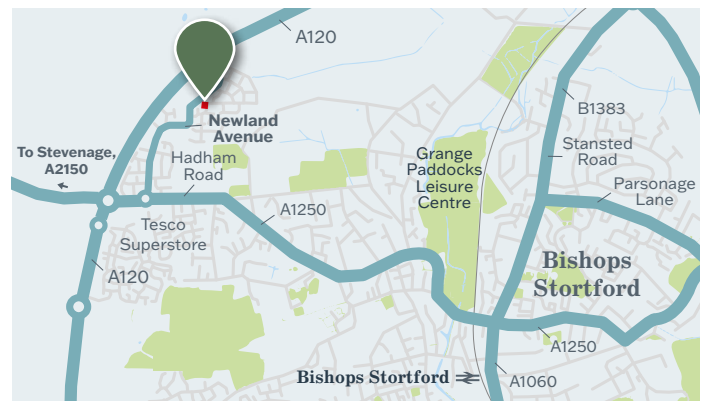


1.3 miles from  
Bishops Stortford  
station



Integrated  
appliances

**Location:** Newland Avenue, Bishop's Stortford



Register your interest today

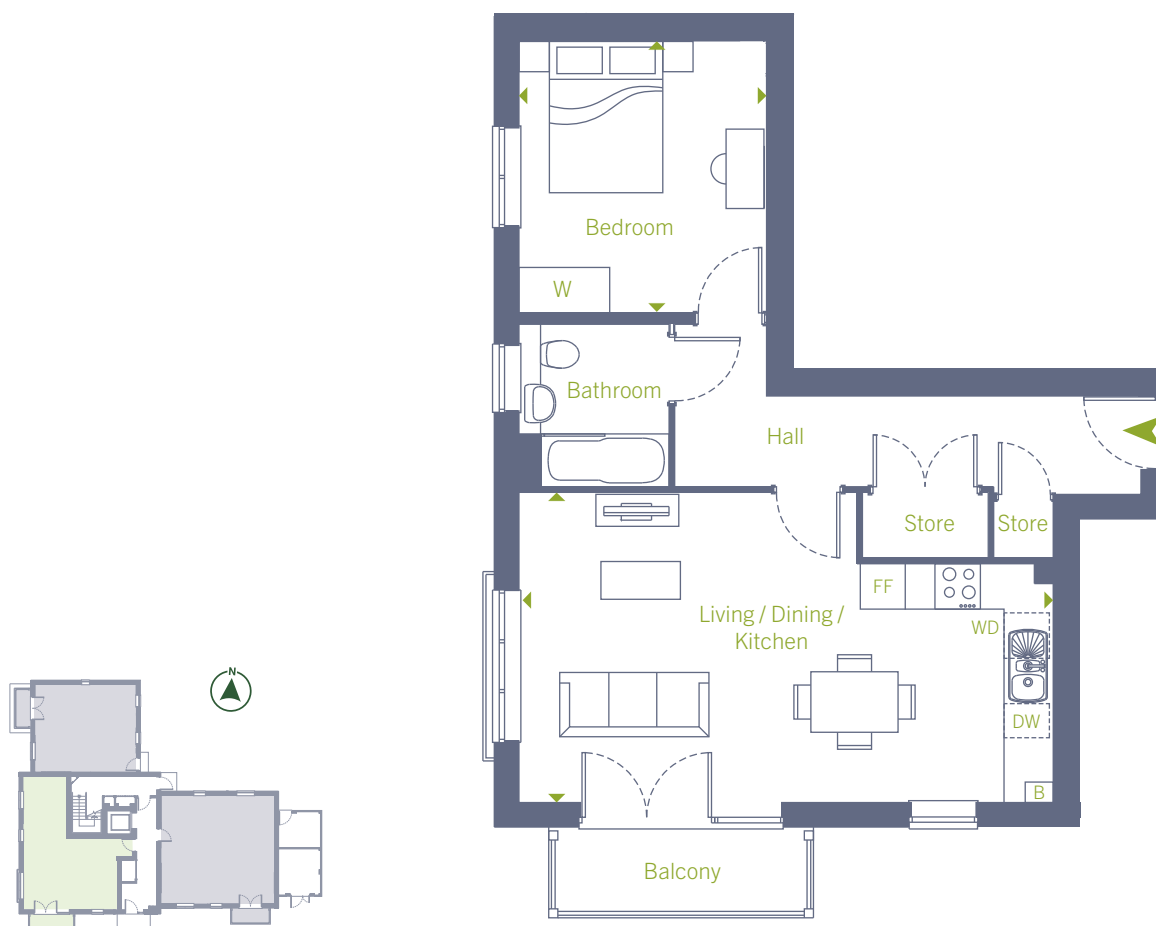
Call: 0207 539 3745 Email: [b3@redloft.co.uk](mailto:b3@redloft.co.uk)

Visit: [b3athome.co.uk/find-a-home/the-willows/](http://b3athome.co.uk/find-a-home/the-willows/) Sat Nav: CM23 2BD

Disclaimer: We have made every effort to accurately describe the property. However, prospective buyers should treat these details as a general guide, not as definitive representations or facts. All room dimensions are subject to a 5% tolerance and may vary from plot to plot. Furniture layouts are for illustrative purposes and are indicative only.

**B3**  
at home

## Plot 363 - 1 bedroom apartment



Ground floor

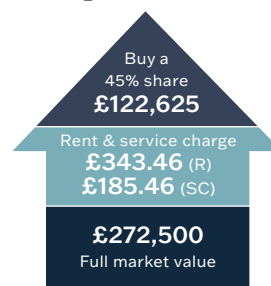
← NEWLAND AVENUE

### Dimensions

Kitchen/Living/Dining	7.11m x 4.14m	23' 4" x 13' 7"
Bedroom	3.65m x 3.32m	12' 0" x 10' 11"
<b>Total Gross Internal Area</b>	<b>52.1 m<sup>2</sup> / 560 ft<sup>2</sup></b>	
Balcony	3.36 m <sup>2</sup> / 36.1 ft <sup>2</sup>	

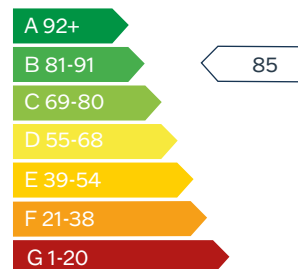
FF – Fridge/Freezer | DW – Dishwasher | WD – Washer/Dryer |  
W – Wardrobe | B – Boiler

### Shared Ownership Example



Rent & service charges are monthly.  
Rent charged at 2.75% on unsold share.

### Predicted Energy Assessment



Register your interest today

Call: 0207 539 3745 Email: [b3@redloft.co.uk](mailto:b3@redloft.co.uk)

Visit: [b3athome.co.uk/find-a-home/the-willows/](http://b3athome.co.uk/find-a-home/the-willows/) Sat Nav: CM23 2BD

Disclaimer: We have made every effort to accurately describe the property. However, prospective buyers should treat these details as a general guide, not as definitive representations or facts. All room dimensions are subject to a 5% tolerance and may vary from plot to plot. Furniture layouts are for illustrative purposes and are indicative only.

# The Willows

AT STORTFORD FIELDS

## 1 BEDROOM APARTMENT

Shared Ownership from £135,000  
for a 45% share

**Property overview** A brand new 1 bedroom apartment in Bishop's Stortford, a thriving market town with great shopping, arts, schools, and medical facilities. Surrounded by countryside, it offers easy access to Cambridge, Newmarket, Ely, and London. Excellent transport links include rail, motorway, and an airport. Enjoy Hatfield Forest, historic sites, and cycling along the River Stort towpath for relaxation and adventure.



### Specification

- Symphony kitchen, with silestone quartz worktop and upstands
- Integrated extractor, hob and oven, fridge freezer, washing machine and dishwasher
- Glass shower screen & thermostatic mixer tap
- Chrome heated towel rail
- Mirror to bathroom above basin with shaver socket
- Vinyl flooring to kitchen, bathroom and WC
- Contemporary Oak Grey Vinyl flooring to living room & hall
- Fitted carpet to bedrooms, landing and staircase
- LED downlights to living areas, dining area and bathroom
- Low energy LED pendant lighting to hallway, landing and bedrooms
- Combination boiler
- Private balcony / terrace to all apartments
- 990-year lease
- Predicted energy rating: B

### Features include:



1 bedroom  
apartment



Allocated  
parking



Located in  
Bishops Stortford



Superb  
specification

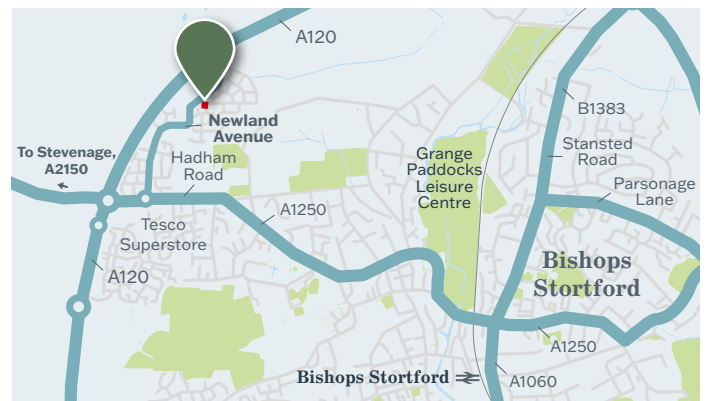


1.3 miles from  
Bishops Stortford  
station



Integrated  
appliances

**Location:** Newland Avenue, Bishop's Stortford



Register your interest today

Call: 0207 539 3745 Email: [b3@redloft.co.uk](mailto:b3@redloft.co.uk)

Visit: [b3athome.co.uk/find-a-home/the-willows/](http://b3athome.co.uk/find-a-home/the-willows/) Sat Nav: CM23 2BD

Disclaimer: We have made every effort to accurately describe the property. However, prospective buyers should treat these details as a general guide, not as definitive representations or facts. All room dimensions are subject to a 5% tolerance and may vary from plot to plot. Furniture layouts are for illustrative purposes and are indicative only.

**B3**  
at home

## Plot 364 - 1 bedroom apartment



Ground floor

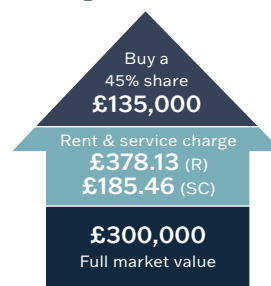
← NEWLAND AVENUE

### Dimensions

Kitchen/Living/Dining	8.24m x 5.00m	27' 1" x 16' 5"
Bedroom	4.50m x 3.55m	14' 9" x 11' 8"
<b>Total Gross Internal Area</b>	<b>70.1 m<sup>2</sup> / 755 ft<sup>2</sup></b>	
Balcony	2.84 m <sup>2</sup> / 30.6 ft <sup>2</sup>	

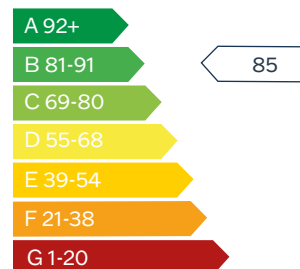
FF – Fridge/Freezer | DW – Dishwasher | WD – Washer/Dryer |  
W – Wardrobe | B – Boiler

### Shared Ownership Example



Rent & service charges are monthly.  
Rent charged at 2.75% on unsold share.

### Predicted Energy Assessment



Register your interest today

Call: 0207 539 3745 Email: [b3@redloft.co.uk](mailto:b3@redloft.co.uk)

Visit: [b3athome.co.uk/find-a-home/the-willows/](http://b3athome.co.uk/find-a-home/the-willows/) Sat Nav: CM23 2BD

Disclaimer: We have made every effort to accurately describe the property. However, prospective buyers should treat these details as a general guide, not as definitive representations or facts. All room dimensions are subject to a 5% tolerance and may vary from plot to plot. Furniture layouts are for illustrative purposes and are indicative only.

# The Willows

AT STORTFORD FIELDS

## 1 BEDROOM APARTMENT

Shared Ownership from £123,750  
for a 45% share

**Property overview** A brand new 1 bedroom apartment in Bishop's Stortford, a thriving market town with great shopping, arts, schools, and medical facilities. Surrounded by countryside, it offers easy access to Cambridge, Newmarket, Ely, and London. Excellent transport links include rail, motorway, and an airport. Enjoy Hatfield Forest, historic sites, and cycling along the River Stort towpath for relaxation and adventure.



### Specification

- Symphony kitchen, with silestone quartz worktop and upstands
- Integrated extractor, hob and oven, fridge freezer, washing machine and dishwasher
- Glass shower screen & thermostatic mixer tap
- Chrome heated towel rail
- Mirror to bathroom above basin with shaver socket
- Vinyl flooring to kitchen, bathroom and WC
- Contemporary Oak Grey Vinyl flooring to living room & hall
- Fitted carpet to bedrooms, landing and staircase
- LED downlights to living areas, dining area and bathroom
- Low energy LED pendant lighting to hallway, landing and bedrooms
- Combination boiler
- Private balcony / terrace to all apartments
- 990-year lease
- Predicted energy rating: B

### Features include:



1 bedroom  
apartment



Allocated  
parking



Located in  
Bishops Stortford



Superb  
specification

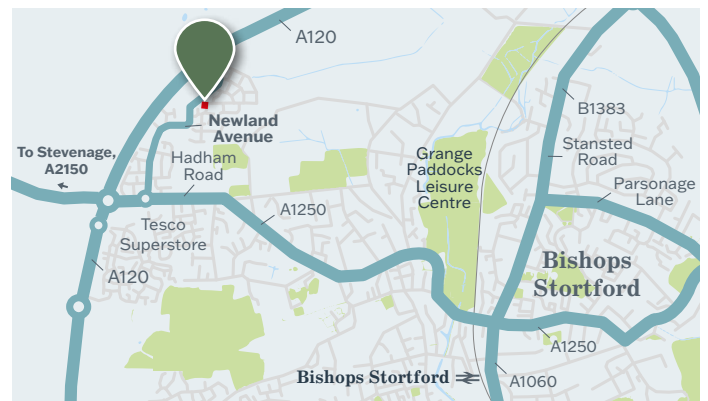


1.3 miles from  
Bishops Stortford  
station



Integrated  
appliances

**Location:** Newland Avenue, Bishop's Stortford



Register your interest today

Call: 0207 539 3745 Email: [b3@redloft.co.uk](mailto:b3@redloft.co.uk)

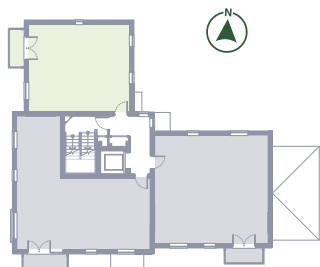
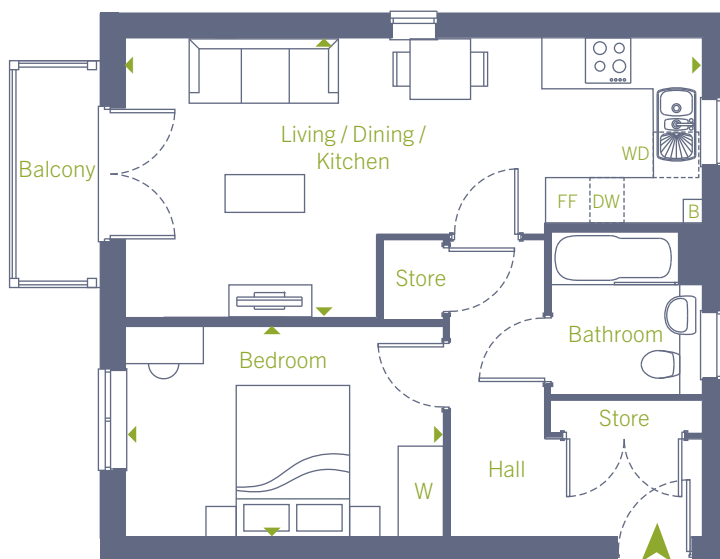
Visit: [b3athome.co.uk/find-a-home/the-willows/](http://b3athome.co.uk/find-a-home/the-willows/) Sat Nav: CM23 2BD

Disclaimer: We have made every effort to accurately describe the property. However, prospective buyers should treat these details as a general guide, not as definitive representations or facts. All room dimensions are subject to a 5% tolerance and may vary from plot to plot. Furniture layouts are for illustrative purposes and are indicative only.

**B3**  
at home



## Plots 365 - 1 bedroom apartment



First floor

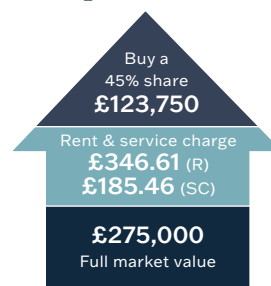


### Dimensions

Kitchen/Living/Dining	7.69m x 3.63m	25' 3" x 11' 11"
Bedroom	4.25m x 2.83m	13' 11" x 9' 3"
<b>Total Gross Internal Area</b>	<b>52.1 m<sup>2</sup> / 560 ft<sup>2</sup></b>	
Balcony	2.84 m <sup>2</sup> / 30.6 ft <sup>2</sup>	

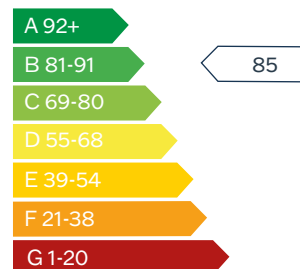
FF – Fridge/Freezer | DW – Dishwasher | WD – Washer/Dryer |  
W – Wardrobe | B – Boiler

### Shared Ownership Example



Rent & service charges are monthly.  
Rent charged at 2.75% on unsold share.

### Predicted Energy Assessment



Register your interest today

Call: 0207 539 3745 Email: [b3@redloft.co.uk](mailto:b3@redloft.co.uk)

Visit: [b3athome.co.uk/find-a-home/the-willows/](http://b3athome.co.uk/find-a-home/the-willows/) Sat Nav: CM23 2BD

Disclaimer: We have made every effort to accurately describe the property. However, prospective buyers should treat these details as a general guide, not as definitive representations or facts. All room dimensions are subject to a 5% tolerance and may vary from plot to plot. Furniture layouts are for illustrative purposes and are indicative only.

# The Willows

AT STORTFORD FIELDS

## 2 BEDROOM APARTMENT

Shared Ownership from £155,250  
for a 45% share

**Property overview** A brand new 2 bedroom apartment in Bishop's Stortford, a thriving market town with great shopping, arts, schools, and medical facilities. Surrounded by countryside, it offers easy access to Cambridge, Newmarket, Ely, and London. Excellent transport links include rail, motorway, and an airport. Enjoy Hatfield Forest, historic sites, and cycling along the River Stort towpath for relaxation and adventure.



### Specification

- Symphony kitchen, with silestone quartz worktop and upstands
- Integrated extractor, hob and oven, fridge freezer, washing machine and dishwasher
- Glass shower screen & thermostatic mixer tap
- Chrome heated towel rail
- Mirror to bathroom above basin with shaver socket
- Vinyl flooring to kitchen, bathroom and WC
- Contemporary Oak Grey Vinyl flooring to living room & hall
- Fitted carpet to bedrooms, landing and staircase
- LED downlights to living areas, dining area and bathroom
- Low energy LED pendant lighting to hallway, landing and bedrooms
- Combination boiler
- Private balcony / terrace to all apartments
- 990-year lease
- Predicted energy rating: B

### Features include:



2 bedroom  
apartment



Allocated  
parking



Located in  
Bishops Stortford



Superb  
specification

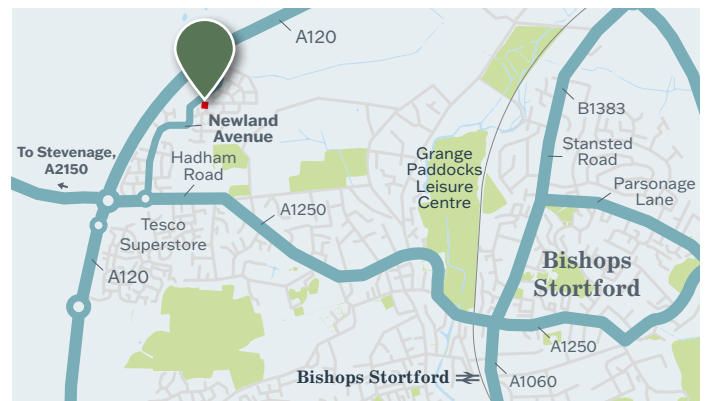


1.3 miles from  
Bishops Stortford  
station



Integrated  
appliances

**Location:** Newland Avenue, Bishop's Stortford



Register your interest today

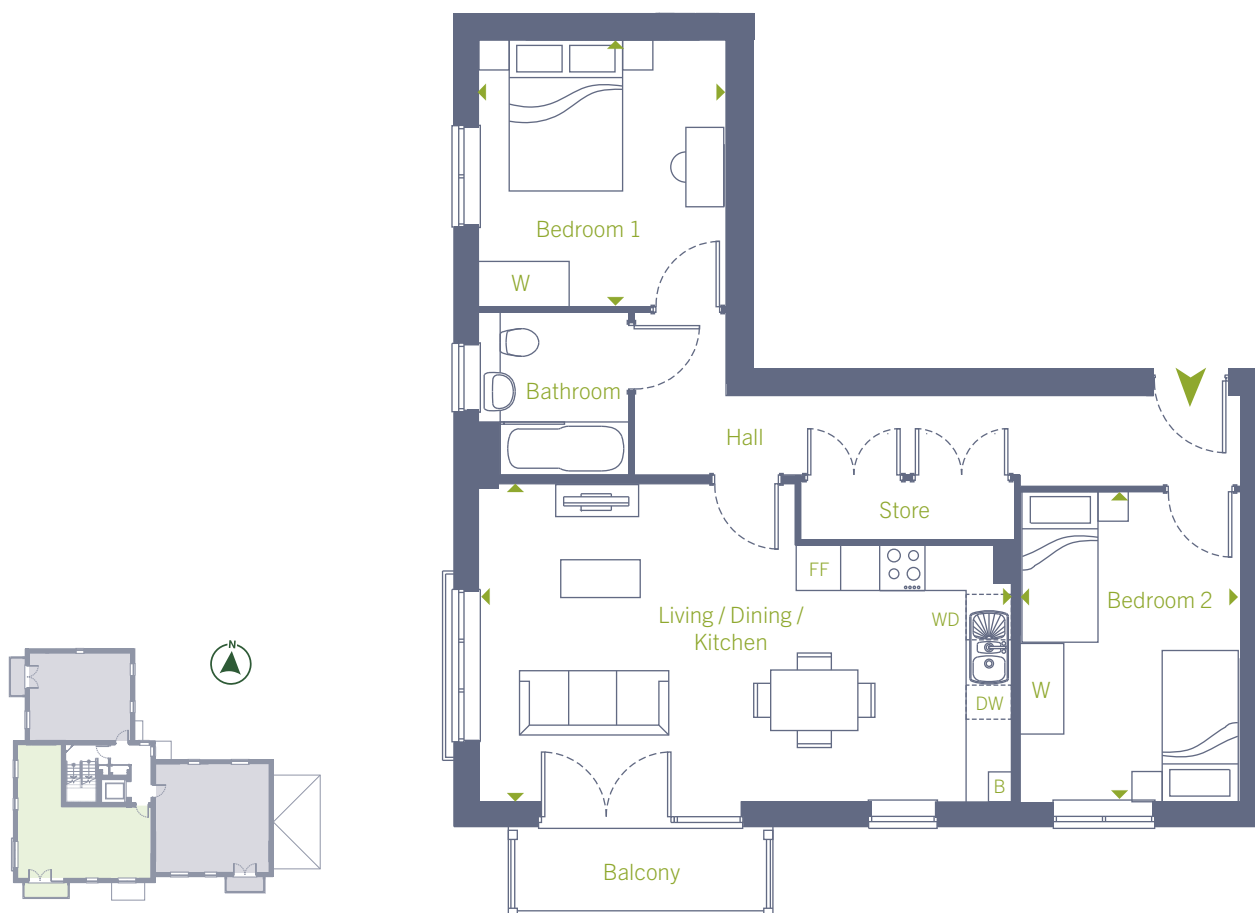
Call: 0207 539 3745 Email: [b3@redloft.co.uk](mailto:b3@redloft.co.uk)

Visit: [b3athome.co.uk/find-a-home/the-willows/](http://b3athome.co.uk/find-a-home/the-willows/) Sat Nav: CM23 2BD

Disclaimer: We have made every effort to accurately describe the property. However, prospective buyers should treat these details as a general guide, not as definitive representations or facts. All room dimensions are subject to a 5% tolerance and may vary from plot to plot. Furniture layouts are for illustrative purposes and are indicative only.

**B3**  
at home

## Plots 366 - 2 bedroom apartment



First floor

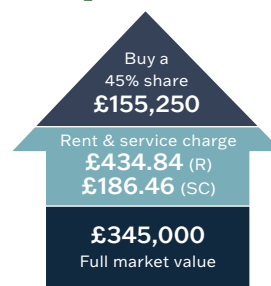
← NEWLAND AVENUE

### Dimensions

Kitchen/Living/Dining	7.11m x 4.25m	23' 4" x 14' 0"
Bedroom 1	3.56m x 3.33m	11' 8" x 10' 11"
Bedroom 2	4.14m x 2.96m	13' 7" x 9' 8"
<b>Total Gross Internal Area</b>	<b>70.1 m<sup>2</sup> / 755 ft<sup>2</sup></b>	
Balcony	3.36 m <sup>2</sup> / 36.1 ft <sup>2</sup>	

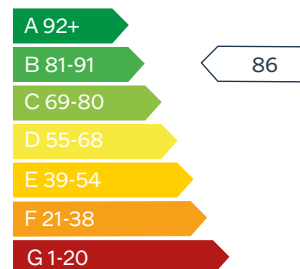
FF – Fridge/Freezer | DW – Dishwasher | WD – Washer/Dryer |  
W – Wardrobe | B – Boiler

### Shared Ownership Example



Rent & service charges are monthly.  
Rent charged at 2.75% on unsold share.

### Predicted Energy Assessment



Register your interest today

Call: 0207 539 3745 Email: [b3@redloft.co.uk](mailto:b3@redloft.co.uk)

Visit: [b3athome.co.uk/find-a-home/the-willows/](http://b3athome.co.uk/find-a-home/the-willows/) Sat Nav: CM23 2BD

Disclaimer: We have made every effort to accurately describe the property. However, prospective buyers should treat these details as a general guide, not as definitive representations or facts. All room dimensions are subject to a 5% tolerance and may vary from plot to plot. Furniture layouts are for illustrative purposes and are indicative only.

# The Willows

AT STORTFORD FIELDS

## 1 BEDROOM APARTMENT

Shared Ownership from £136,125  
for a 45% share

**Property overview** A brand new 1 bedroom apartment in Bishop's Stortford, a thriving market town with great shopping, arts, schools, and medical facilities. Surrounded by countryside, it offers easy access to Cambridge, Newmarket, Ely, and London. Excellent transport links include rail, motorway, and an airport. Enjoy Hatfield Forest, historic sites, and cycling along the River Stort towpath for relaxation and adventure.



### Specification

- Symphony kitchen, with silestone quartz worktop and upstands
- Integrated extractor, hob and oven, fridge freezer, washing machine and slimline dishwasher
- Glass shower screen & thermostatic mixer tap
- Chrome heated towel rail
- Mirror to bathroom above basin
- Vinyl flooring to bathroom
- Contemporary Oak Grey Vinyl flooring to living room and hall
- Fitted carpet to bedrooms
- LED downlights to living areas, dining area & bathroom
- Low energy LED pendant lighting to hallway & bedrooms
- Combination boiler
- Private balcony / terrace to all apartments
- 990-year lease
- Predicted energy rating: B

### Features include:



1 bedroom  
apartment



Allocated  
parking



Located in  
Bishops Stortford



Superb  
specification

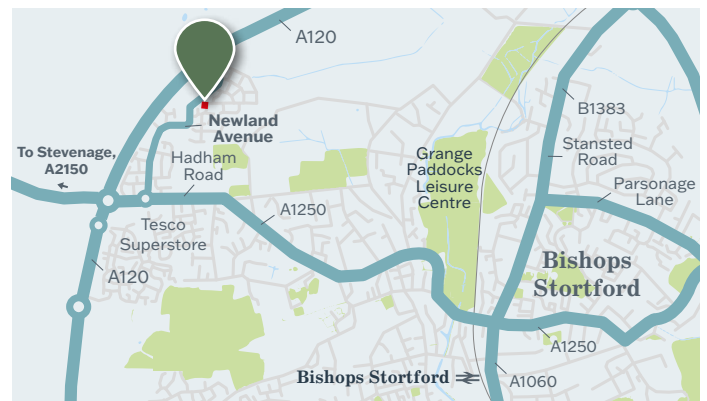


1.3 miles from  
Bishops Stortford  
station



Integrated  
appliances

**Location:** Newland Avenue, Bishop's Stortford, CM23 2QB



Register your interest today

Call: 0207 539 3745 Email: [b3@redloft.co.uk](mailto:b3@redloft.co.uk)

Visit: [b3athome.co.uk/find-a-home/the-willows/](http://b3athome.co.uk/find-a-home/the-willows/) Sat Nav: CM23 2BD

Disclaimer: We have made every effort to accurately describe the property. However, prospective buyers should treat these details as a general guide, not as definitive representations or facts. All room dimensions are subject to a 5% tolerance and may vary from plot to plot. Furniture layouts are for illustrative purposes and are indicative only.

**B3**  
at home

## Plot 367 - 1 bedroom apartment



First floor

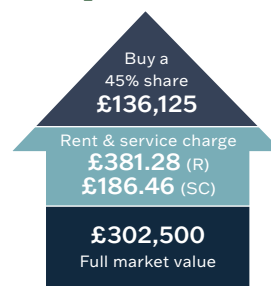
← NEWLAND AVENUE

### Dimensions

Kitchen/Living/Dining	8.24m x 5.00m	27' 1" x 16' 4"
Bedroom	4.55m x 2.80m	14' 11" x 9' 2"
<b>Total Gross Internal Area</b>	<b>70.1 m<sup>2</sup> / 755 ft<sup>2</sup></b>	
Balcony	2.84 m <sup>2</sup> / 30.6 ft <sup>2</sup>	

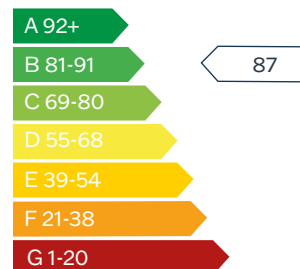
FF – Fridge/Freezer | DW – Dishwasher | WD – Washer/Dryer |  
W – Wardrobe | B – Boiler

### Shared Ownership Example



Rent & service charges are monthly.  
Rent charged at 2.75% on unsold share.

### Predicted Energy Assessment



Register your interest today

Call: 0207 539 3745 Email: [b3@redloft.co.uk](mailto:b3@redloft.co.uk)

Visit: [b3athome.co.uk/find-a-home/the-willows/](http://b3athome.co.uk/find-a-home/the-willows/) Sat Nav: CM23 2BD

Disclaimer: We have made every effort to accurately describe the property. However, prospective buyers should treat these details as a general guide, not as definitive representations or facts. All room dimensions are subject to a 5% tolerance and may vary from plot to plot. Furniture layouts are for illustrative purposes and are indicative only.



# The Willows

AT STORTFORD FIELDS

## 1 BEDROOM APARTMENT

Shared Ownership from £124,875  
for a 45% share

**Property overview** A brand new 1 bedroom apartment in Bishop's Stortford, a thriving market town with great shopping, arts, schools, and medical facilities. Surrounded by countryside, it offers easy access to Cambridge, Newmarket, Ely, and London. Excellent transport links include rail, motorway, and an airport. Enjoy Hatfield Forest, historic sites, and cycling along the River Stort towpath for relaxation and adventure.



### Specification

- Symphony kitchen, with silestone quartz worktop and upstands
- Integrated extractor, hob and oven, fridge freezer, washing machine and dishwasher
- Glass shower screen & thermostatic mixer tap
- Chrome heated towel rail
- Mirror to bathroom above basin with shaver socket
- Vinyl flooring to kitchen, bathroom and WC
- Contemporary Oak Grey Vinyl flooring to living room & hall
- Fitted carpet to bedrooms, landing and staircase
- LED downlights to living areas, dining area and bathroom
- Low energy LED pendant lighting to hallway, landing and bedrooms
- Combination boiler
- Private balcony / terrace to all apartments
- 990-year lease
- Predicted energy rating: B

### Features include:



1 bedroom  
apartment



Allocated  
parking



Located in  
Bishops Stortford



Superb  
specification

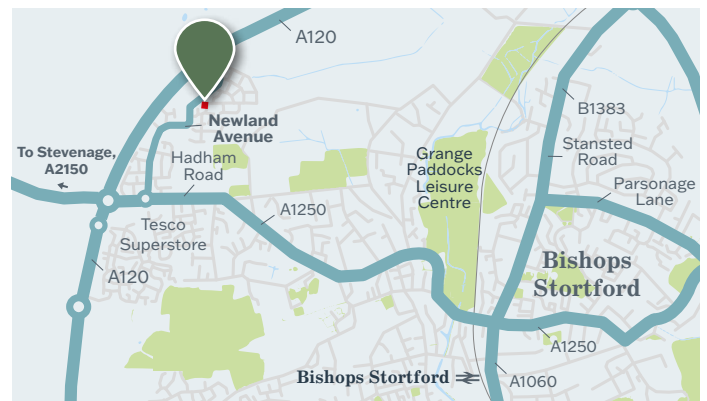


1.3 miles from  
Bishops Stortford  
station



Integrated  
appliances

**Location:** Newland Avenue, Bishop's Stortford



Register your interest today

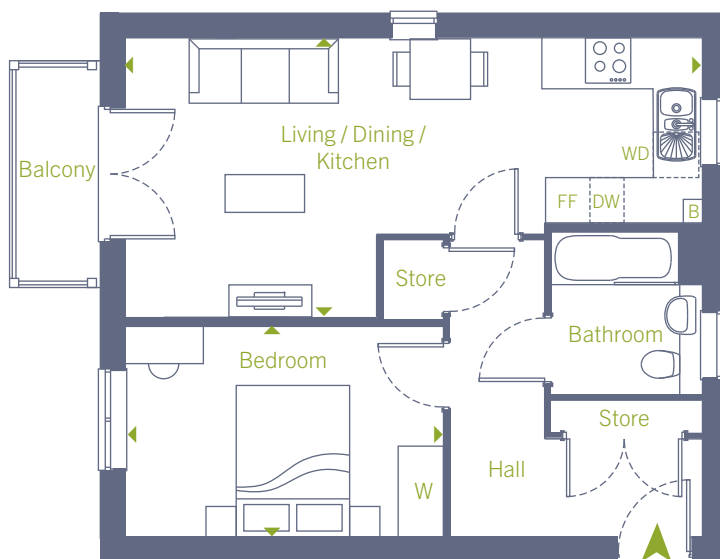
Call: 0207 539 3745 Email: [b3@redloft.co.uk](mailto:b3@redloft.co.uk)

Visit: [b3athome.co.uk/find-a-home/the-willows/](http://b3athome.co.uk/find-a-home/the-willows/) Sat Nav: CM23 2BD

Disclaimer: We have made every effort to accurately describe the property. However, prospective buyers should treat these details as a general guide, not as definitive representations or facts. All room dimensions are subject to a 5% tolerance and may vary from plot to plot. Furniture layouts are for illustrative purposes and are indicative only.

**B3**  
at home

## Plots 368 - 1 bedroom apartment



Second floor

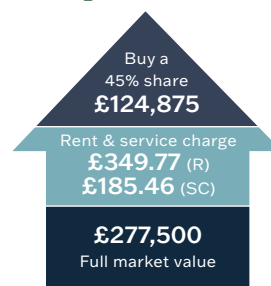
← NEWLAND AVENUE

### Dimensions

Kitchen/Living/Dining	7.69m x 3.63m	25' 3" x 11' 11"
Bedroom	4.25m x 2.83m	13' 11" x 9' 3"
<b>Total Gross Internal Area</b>	<b>52.1 m<sup>2</sup> / 560 ft<sup>2</sup></b>	
Balcony	2.84 m <sup>2</sup> / 30.6 ft <sup>2</sup>	

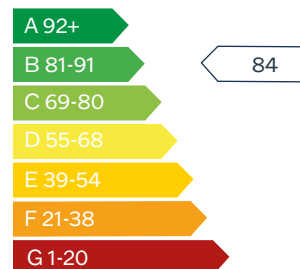
FF – Fridge/Freezer | DW – Dishwasher | WD – Washer/Dryer |  
W – Wardrobe | B – Boiler

### Shared Ownership Example



Rent & service charges are monthly.  
Rent charged at 2.75% on unsold share.

### Predicted Energy Assessment



Register your interest today

Call: 0207 539 3745 Email: [b3@redloft.co.uk](mailto:b3@redloft.co.uk)

Visit: [b3athome.co.uk/find-a-home/the-willows/](http://b3athome.co.uk/find-a-home/the-willows/) Sat Nav: CM23 2BD

Disclaimer: We have made every effort to accurately describe the property. However, prospective buyers should treat these details as a general guide, not as definitive representations or facts. All room dimensions are subject to a 5% tolerance and may vary from plot to plot. Furniture layouts are for illustrative purposes and are indicative only.

# The Willows

AT STORTFORD FIELDS

**2 BEDROOM APARTMENT**  
Shared Ownership from £156,500  
for a 45% share

**Property overview** A brand new 2 bedroom apartment in Bishop's Stortford, a thriving market town with great shopping, arts, schools, and medical facilities. Surrounded by countryside, it offers easy access to Cambridge, Newmarket, Ely, and London. Excellent transport links include rail, motorway, and an airport. Enjoy Hatfield Forest, historic sites, and cycling along the River Stort towpath for relaxation and adventure.



## Specification

- Symphony kitchen, with silestone quartz worktop and upstands
- Integrated extractor, hob and oven, fridge freezer, washing machine and dishwasher
- Glass shower screen & thermostatic mixer tap
- Chrome heated towel rail
- Mirror to bathroom above basin with shaver socket
- Vinyl flooring to kitchen, bathroom and WC
- Contemporary Oak Grey Vinyl flooring to living room & hall
- Fitted carpet to bedrooms, landing and staircase
- LED downlights to living areas, dining area and bathroom
- Low energy LED pendant lighting to hallway, landing and bedrooms
- Combination boiler
- Private balcony / terrace to all apartments
- 990-year lease
- Predicted energy rating: B

## Features include:



2 bedroom apartment



Allocated parking



Located in Bishops Stortford



Superb specification

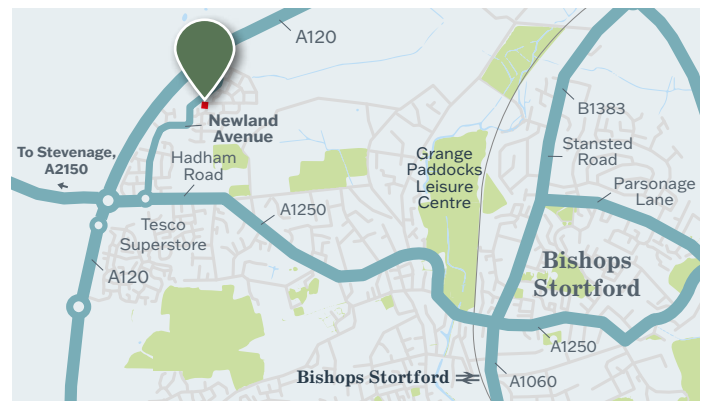


1.3 miles from Bishops Stortford station



Integrated appliances

**Location:** Newland Avenue, Bishop's Stortford



**Register your interest today**

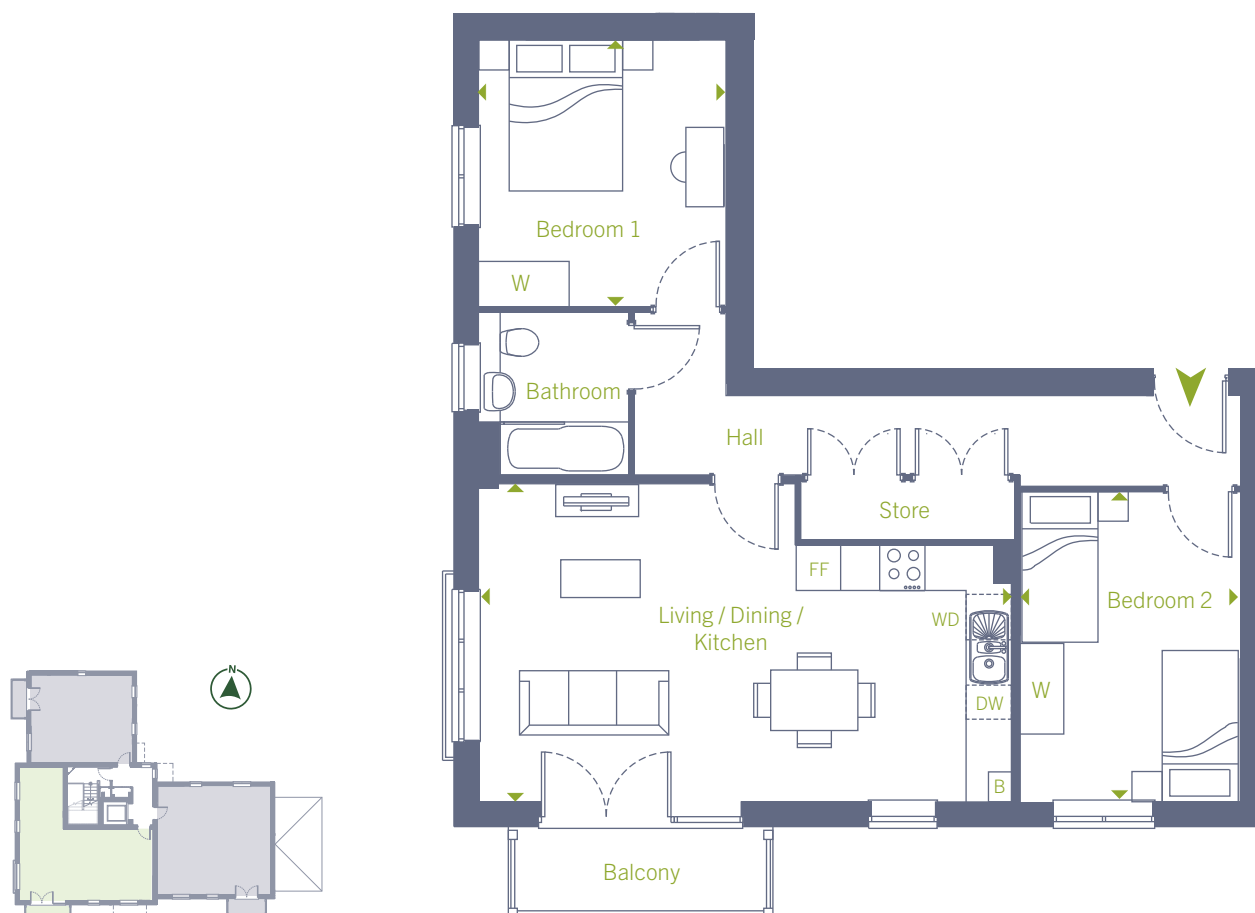
**Call:** 0207 539 3745 **Email:** [b3@redloft.co.uk](mailto:b3@redloft.co.uk)

**Visit:** [b3athome.co.uk/find-a-home/the-willows/](http://b3athome.co.uk/find-a-home/the-willows/) **Sat Nav:** CM23 2BD

Disclaimer: We have made every effort to accurately describe the property. However, prospective buyers should treat these details as a general guide, not as definitive representations or facts. All room dimensions are subject to a 5% tolerance and may vary from plot to plot. Furniture layouts are for illustrative purposes and are indicative only.

**B3**  
at home

## Plots 369 - 2 bedroom apartment



Second floor

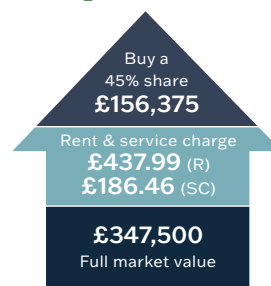
← NEWLAND AVENUE

### Dimensions

Kitchen/Living/Dining	7.11m x 4.25m	23' 4" x 14' 0"
Bedroom 1	3.56m x 3.33m	11' 8" x 10' 11"
Bedroom 2	4.14m x 2.96m	13' 7" x 9' 8"
<b>Total Gross Internal Area</b>	<b>70.1 m<sup>2</sup> / 755 ft<sup>2</sup></b>	
Balcony	3.36 m <sup>2</sup> / 36.1 ft <sup>2</sup>	

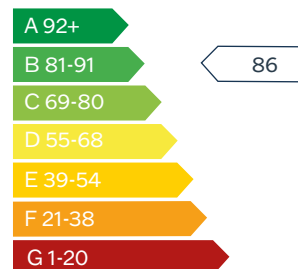
FF – Fridge/Freezer | DW – Dishwasher | WD – Washer/Dryer |  
W – Wardrobe | B – Boiler

### Shared Ownership Example



Rent & service charges are monthly.  
Rent charged at 2.75% on unsold share.

### Predicted Energy Assessment



Register your interest today

Call: 0207 539 3745 Email: [b3@redloft.co.uk](mailto:b3@redloft.co.uk)

Visit: [b3athome.co.uk/find-a-home/the-willows/](http://b3athome.co.uk/find-a-home/the-willows/) Sat Nav: CM23 2BD

Disclaimer: We have made every effort to accurately describe the property. However, prospective buyers should treat these details as a general guide, not as definitive representations or facts. All room dimensions are subject to a 5% tolerance and may vary from plot to plot. Furniture layouts are for illustrative purposes and are indicative only.

# The Willows

AT STORTFORD FIELDS

**2 BEDROOM APARTMENT**  
Shared Ownership from £156,375  
for a 45% share

**Property overview** A brand new 2 bedroom apartment in Bishop's Stortford, a thriving market town with great shopping, arts, schools, and medical facilities. Surrounded by countryside, it offers easy access to Cambridge, Newmarket, Ely, and London. Excellent transport links include rail, motorway, and an airport. Enjoy Hatfield Forest, historic sites, and cycling along the River Stort towpath for relaxation and adventure.



## Specification

- Symphony kitchen, with silestone quartz worktop and upstands
- Integrated extractor, hob and oven, fridge freezer, washing machine and slimline dishwasher
- Glass shower screen & thermostatic mixer tap
- Chrome heated towel rail
- Mirror to bathroom above basin
- Vinyl flooring to bathroom
- Contemporary Oak Grey Vinyl flooring to living room and hall
- Fitted carpet to bedrooms
- LED downlights to living areas, dining area & bathroom
- Low energy LED pendant lighting to hallway & bedrooms
- Combination boiler
- Private balcony / terrace to all apartments
- 990-year lease
- Predicted energy rating: B

## Features include:



2 bedroom apartment



Allocated parking



Located in Bishops Stortford



Superb specification

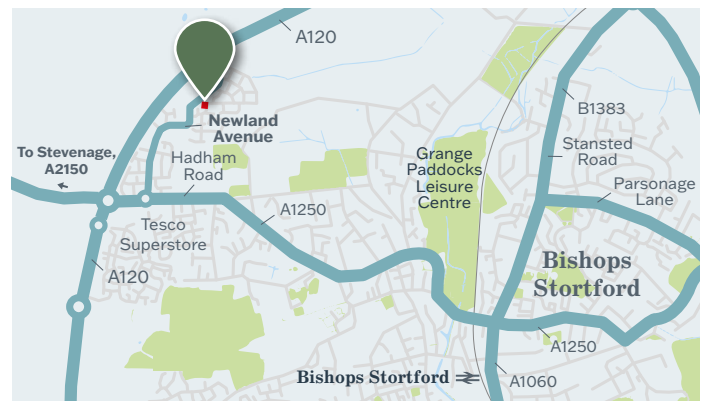


1.3 miles from Bishops Stortford station



Integrated appliances

**Location:** Newland Avenue, Bishop's Stortford, CM23 2QB



**Register your interest today**

**Call:** 0207 539 3745 **Email:** [b3@redloft.co.uk](mailto:b3@redloft.co.uk)

**Visit:** [b3athome.co.uk/find-a-home/the-willows/](http://b3athome.co.uk/find-a-home/the-willows/) **Sat Nav:** CM23 2BD

Disclaimer: We have made every effort to accurately describe the property. However, prospective buyers should treat these details as a general guide, not as definitive representations or facts. All room dimensions are subject to a 5% tolerance and may vary from plot to plot. Furniture layouts are for illustrative purposes and are indicative only.

**B3**  
at home



## Plot 370 - 2 bedroom apartment



Second floor

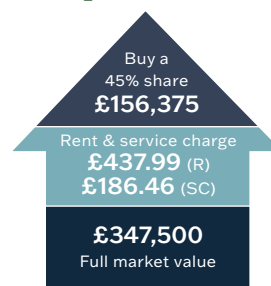


### Dimensions

Kitchen/Living/Dining	5.73m x 5.02m	18' 10" x 16' 6"
Bedroom 1	5.02m x 2.80m	16' 6" x 9' 2"
Bedroom 2	4.10m x 3.15m	13' 6" x 10' 4"
<b>Total Gross Internal Area</b>	<b>70.1 m<sup>2</sup> / 755 ft<sup>2</sup></b>	
Balcony	2.84 m <sup>2</sup> / 30.6 ft <sup>2</sup>	

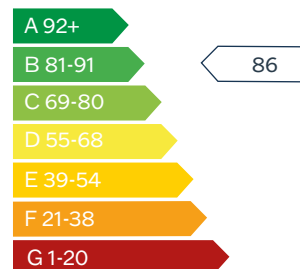
FF – Fridge/Freezer | DW – Dishwasher | WD – Washer/Dryer |  
W – Wardrobe | B – Boiler

### Shared Ownership Example



Rent & service charges are monthly.  
Rent charged at 2.75% on unsold share.

### Predicted Energy Assessment



Register your interest today

Call: 0207 539 3745 Email: [b3@redloft.co.uk](mailto:b3@redloft.co.uk)

Visit: [b3athome.co.uk/find-a-home/the-willows/](http://b3athome.co.uk/find-a-home/the-willows/) Sat Nav: CM23 2BD

Disclaimer: We have made every effort to accurately describe the property. However, prospective buyers should treat these details as a general guide, not as definitive representations or facts. All room dimensions are subject to a 5% tolerance and may vary from plot to plot. Furniture layouts are for illustrative purposes and are indicative only.