



Waterbeach

By Stonebond Homes








There's no place like home

Putting customers first

Building homes is what Amplus does, and we do it exceptionally well across the Midlands and beyond. Over a number of years, we've seen what people really like about the homes we build and we build on that experience.

So you know that behind the kerb appeal, there's a structure that meets the highest professional standards. You know that every detail has been checked and inspected. That's experience!

Finally, **location, location, location**. You will see, we try to find the very best spot for every taste, as we believe in quality homes, in quality places.





Home is a place for everything

Your home should fit around your life. So whether you're a budding chef, artist or just like to relax, you'll find room for whatever you're passionate about.

Home is for making memories

Your home is your haven. From the minute you unlock your front door, a new chapter in your life begins.

Home is where your family grows

From baby to young adult, having a space in which your family can grow together is so important. That's why we build more than just homes.

Home is a warm place

Whether you're curling up on the sofa or having a family meal, your home will keep you warm and content all year round.

Homes built to last

There's no feeling like stepping into your new home. Whatever your plans are for tomorrow, we build our homes with a long and happy future in mind.





Home is where love resides

Located in an area which allows you to discover the beauty of England's countryside, where amazing architecture blends effortlessly with luscious landscapes. Whether walking or cycling is your thing, this is a place you just have to explore. Waterbeach - inspired by the former barracks and airfields it sits upon - is a development built for the future.

Also boasting a rich heritage, the area has one of the most prestigious universities in the country, and the River Cam winds its way through the county which is a captivating destination for all.



Local wildlife

With ecology at its heart, Waterbeach has a 23-acre lake, wetlands and allotments. Dedicated pathways have been created to allow you to enjoy wildlife in its natural habitats.

Commuter links

Blessed with transport links, Waterbeach has been designed with sustainability in mind. Whether walking, cycling, or the sustainable travel hub, you're connected to it all.

Attractions

The local sports hall and studio has everything from football to yoga, while there's an annual summer event to showcase work from artists of all abilities as well as pop-up food festivals. Waterbeach has something for everyone.

Education

Setting up home in the Waterbeach community will present lots of opportunities for young minds to grow, with three new primary schools planned for the site, as well as a secondary school.



Waterbeach

by Stonebond Homes

Development Plan



Block A

-  **The Dakota**
2 bedroom apartment
- The Oxford**
2 bedroom apartment
- The Warwick**
2 bedroom apartment

Block D

-  **The Hampden**
1 bedroom apartment
- The Wellington**
2 bedroom apartment
- The Beaufort**
2 bedroom apartment
- The Halifax**
2 bedroom apartment

-  **The Swift**
3 bedroom home

-  **The York**
3 bedroom home

This development layout plan depicts the intended layout and development mix at the time of publication. However, those intentions may change and a purchaser cannot rely on the details shown on this plan. Landscaping shown is only indicative. Any queries should be raised through the conveyancing process.



The York



Kitchen/Dining room

3.95m x 5.99m

15'7" x 9'4"

Lounge

4.10m x 3.67m

13'6" x 12'2"

Bedroom 1

4.10m x 3.16m

13'6" x 10'5"

Bedroom 2

4.10m x 2.73m

13'6" x 9'0"

Bedroom 3

4.10m x 2.22m

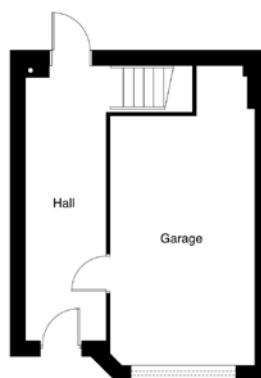
13'6" x 7'4"

Dimensions stated are to be used as guidance only and should not be used as a basis for furnishings, furniture or appliance spaces. Dimensions for such purposes must be verified against actual site measurements. Please note the handing of plots may vary from the floor plans shown. All images are used for illustrative purposes only and are representative only. They may not be the same as the actual home you purchase and the specification may differ. Images may be of a slightly different model of home, individual features such as windows, brick, carpets, paint and other material colours may vary and also the specification of fittings may vary. Any furnishings and furniture shown are not included in any sale. Please check with a member of our sales team for details of the exact specification for each property type and the associated prices.

All dimensions are maximum sizes



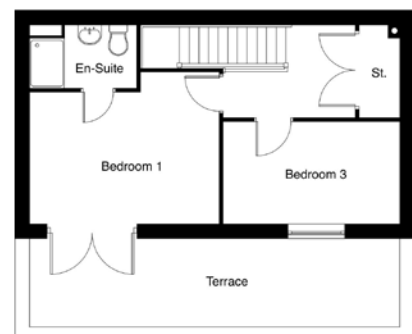
The Swift



Ground Floor



First Floor



Second Floor

Kitchen/Lounge/Dining room

7.23m x 5.52m

23'8" x 18'1"

Bedroom 1

4.55m x 3.67m

14'11" x 12'0"

Bedroom 2

3.22m x 3.79m

10'6" x 12'5"

Bedroom 3

4.26m x 2.43m

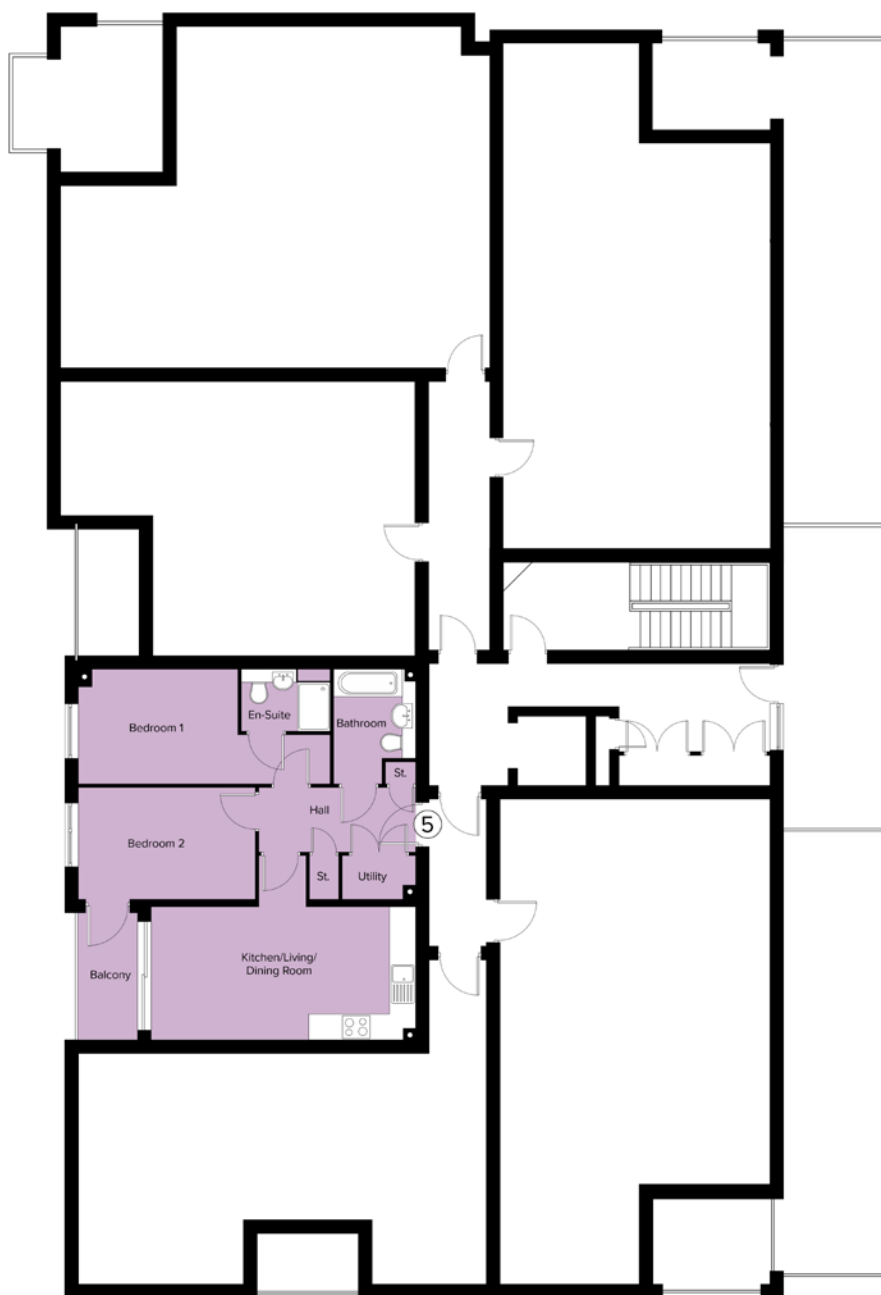
13'11" x 7'11"

Dimensions stated are to be used as guidance only and should not be used as a basis for furnishings, furniture or appliance spaces. Dimensions for such purposes must be verified against actual site measurements. Please note the handing of plots may vary from the floor plans shown. All images are used for illustrative purposes only and are representative only. They may not be the same as the actual home you purchase and the specification may differ. Images may be of a slightly different model of home, individual features such as windows, brick, carpets, paint and other material colours may vary and also the specification of fittings may vary. Any furnishings and furniture shown are not included in any sale. Please check with a member of our sales team for details of the exact specification for each property type and the associated prices.

All dimensions are maximum sizes



The Apartments at Waterbeach



BLOCK A FIRST FLOOR



Dimensions stated are to be used as guidance only and should not be used as a basis for furnishings, furniture or appliance spaces. Dimensions for such purposes must be verified against actual site measurements. Please note the handing of plots may vary from the floor plans shown. All images are used for illustrative purposes only and are representative only. They may not be the same as the actual home you purchase and the specification may differ. Images may be of a slightly different model of home, individual features such as windows, brick, carpets, paint and other material colours may vary and also the specification of fittings may vary. Any furnishings and furniture shown are not included in any sale. Please check with a member of our sales team for details of the exact specification for each property type and the associated prices.



BLOCK A SECOND FLOOR

- The Dakota
- The Warwick
- The Oxford

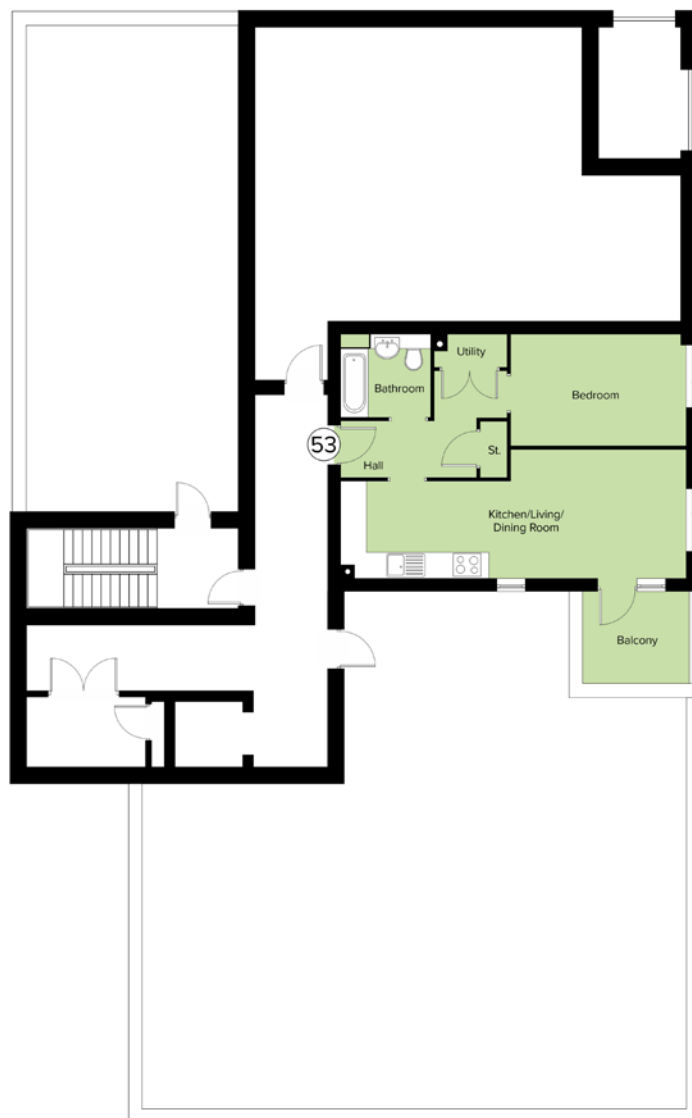
Dimensions stated are to be used as guidance only and should not be used as a basis for furnishings, furniture or appliance spaces. Dimensions for such purposes must be verified against actual site measurements. Please note the handing of plots may vary from the floor plans shown. All images are used for illustrative purposes only and are representative only. They may not be the same as the actual home you purchase and the specification may differ. Images may be of a slightly different model of home, individual features such as windows, brick, carpets, paint and other material colours may vary and also the specification of fittings may vary. Any furnishings and furniture shown are not included in any sale. Please check with a member of our sales team for details of the exact specification for each property type and the associated prices.



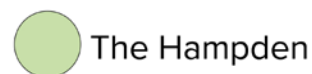
BLOCK D FIRST FLOOR

- The Beaufort
- The Halifax
- The Wellington

Dimensions stated are to be used as guidance only and should not be used as a basis for furnishings, furniture or appliance spaces. Dimensions for such purposes must be verified against actual site measurements. Please note the handing of plots may vary from the floor plans shown. All images are used for illustrative purposes only and are representative only. They may not be the same as the actual home you purchase and the specification may differ. Images may be of a slightly different model of home, individual features such as windows, brick, carpets, paint and other material colours may vary and also the specification of fittings may vary. Any furnishings and furniture shown are not included in any sale. Please check with a member of our sales team for details of the exact specification for each property type and the associated prices.



BLOCK D THIRD FLOOR



Dimensions stated are to be used as guidance only and should not be used as a basis for furnishings, furniture or appliance spaces. Dimensions for such purposes must be verified against actual site measurements. Please note the handing of plots may vary from the floor plans shown. All images are used for illustrative purposes only and are representative only. They may not be the same as the actual home you purchase and the specification may differ. Images may be of a slightly different model of home, individual features such as windows, brick, carpets, paint and other material colours may vary and also the specification of fittings may vary. Any furnishings and furniture shown are not included in any sale. Please check with a member of our sales team for details of the exact specification for each property type and the associated prices.



The Dakota



Kitchen/Lounge/ Dining room

6.60m x 3.35m

21'7" x 15'0"

Bedroom 1

6.21m x 2.79m

20'3" x 9'0"

Bedroom 2

4.36m x 2.72m

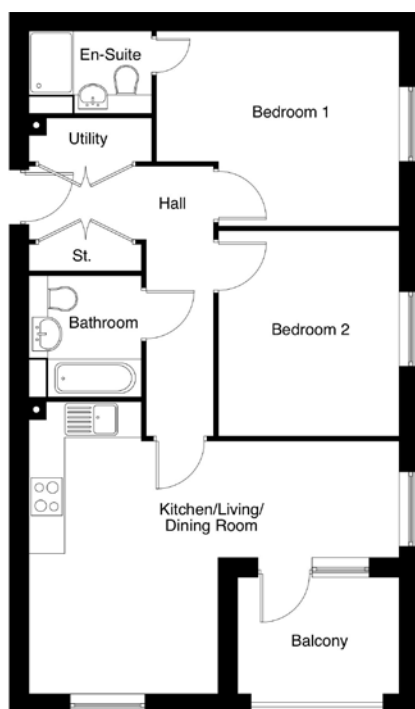
14'3" x 8'11"

**All dimensions are
maximum sizes**

Dimensions stated are to be used as guidance only and should not be used as a basis for furnishings, furniture or appliance spaces. Dimensions for such purposes must be verified against actual site measurements. Please note the handing of plots may vary from the floor plans shown. All images are used for illustrative purposes only and are representative only. They may not be the same as the actual home you purchase and the specification may differ. Images may be of a slightly different model of home, individual features such as windows, brick, carpets, paint and other material colours may vary and also the specification of fittings may vary. Any furnishings and furniture shown are not included in any sale. Please check with a member of our sales team for details of the exact specification for each property type and the associated prices.



The Oxford



Kitchen/Lounge/ Dining room

6.69m x 5.27m

22'0" x 17'3"

Bedroom 1

4.39m x 3.55m

14'4" x 12'2"

Bedroom 2

3.25m x 3.69m

14'6" x 11'8"

**All dimensions are
maximum sizes**

Dimensions stated are to be used as guidance only and should not be used as a basis for furnishings, furniture or appliance spaces. Dimensions for such purposes must be verified against actual site measurements. Please note the handing of plots may vary from the floor plans shown. All images are used for illustrative purposes only and are representative only. They may not be the same as the actual home you purchase and the specification may differ. Images may be of a slightly different model of home, individual features such as windows, brick, carpets, paint and other material colours may vary and also the specification of fittings may vary. Any furnishings and furniture shown are not included in any sale. Please check with a member of our sales team for details of the exact specification for each property type and the associated prices.



The Warwick



Kitchen/Lounge/ Dining room

6.60m x 5.55m

22'9" x 18'4"

Bedroom 1

4.30m x 2.99m

14'1" x 12'1"

Bedroom 2

3.09m x 3.77m

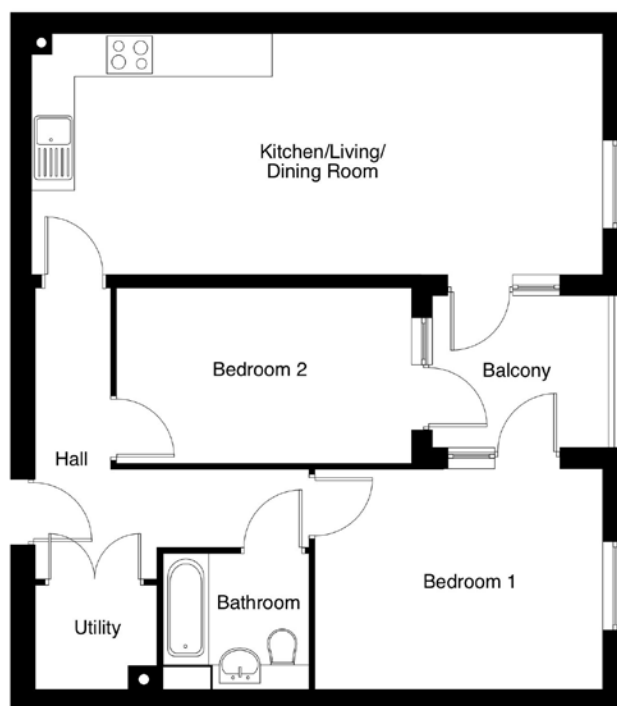
10'1" x 12'4"

**All dimensions are
maximum sizes**

Dimensions stated are to be used as guidance only and should not be used as a basis for furnishings, furniture or appliance spaces. Dimensions for such purposes must be verified against actual site measurements. Please note the handing of plots may vary from the floor plans shown. All images are used for illustrative purposes only and are representative only. They may not be the same as the actual home you purchase and the specification may differ. Images may be of a slightly different model of home, individual features such as windows, brick, carpets, paint and other material colours may vary and also the specification of fittings may vary. Any furnishings and furniture shown are not included in any sale. Please check with a member of our sales team for details of the exact specification for each property type and the associated prices.



The Halifax



Kitchen/Lounge/ Dining room

8.54m x 3.53m

28'8" x 11'8"

Bedroom 1

4.29m x 3.28m

14'2" x 10'10"

Bedroom 2

4.36m x 2.65m

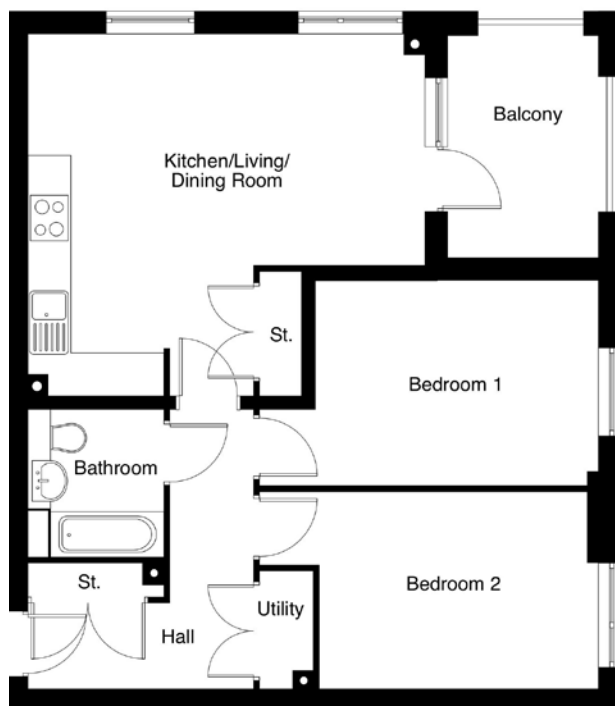
14'5" x 7'4"

**All dimensions are
maximum sizes**

Dimensions stated are to be used as guidance only and should not be used as a basis for furnishings, furniture or appliance spaces. Dimensions for such purposes must be verified against actual site measurements. Please note the handing of plots may vary from the floor plans shown. All images are used for illustrative purposes only and are representative only. They may not be the same as the actual home you purchase and the specification may differ. Images may be of a slightly different model of home, individual features such as windows, brick, carpets, paint and other material colours may vary and also the specification of fittings may vary. Any furnishings and furniture shown are not included in any sale. Please check with a member of our sales team for details of the exact specification for each property type and the associated prices.



The Beaufort



Kitchen/Lounge/ Dining room

5.95m x 5.39m

19'8" x 17'10"

Bedroom 1

3.06m x 5.04m

10'0" x 16'6"

Bedroom 2

5.04m x 2.99m

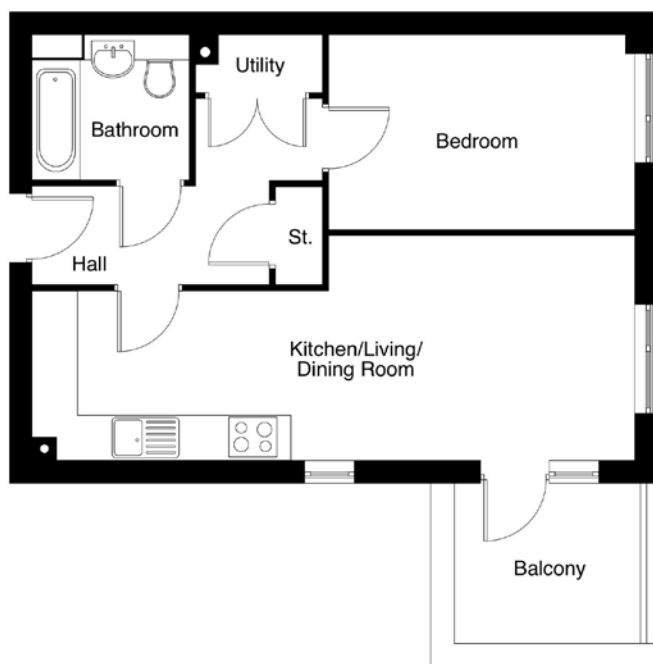
16'6" x 9'11"

**All dimensions are
maximum sizes**

Dimensions stated are to be used as guidance only and should not be used as a basis for furnishings, furniture or appliance spaces. Dimensions for such purposes must be verified against actual site measurements. Please note the handing of plots may vary from the floor plans shown. All images are used for illustrative purposes only and are representative only. They may not be the same as the actual home you purchase and the specification may differ. Images may be of a slightly different model of home, individual features such as windows, brick, carpets, paint and other material colours may vary and also the specification of fittings may vary. Any furnishings and furniture shown are not included in any sale. Please check with a member of our sales team for details of the exact specification for each property type and the associated prices.



The Hampden



Kitchen/Lounge/ Dining room

8.52m x 3.18m

27'11" x 10'5"

Bedroom 1

4.34m x 2.75m

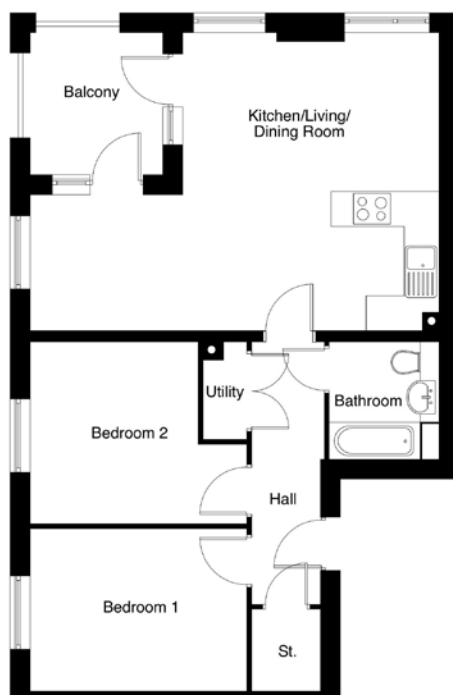
14'4" x 9'1"

**All dimensions are
maximum sizes**

Dimensions stated are to be used as guidance only and should not be used as a basis for furnishings, furniture or appliance spaces. Dimensions for such purposes must be verified against actual site measurements. Please note the handing of plots may vary from the floor plans shown. All images are used for illustrative purposes only and are representative only. They may not be the same as the actual home you purchase and the specification may differ. Images may be of a slightly different model of home, individual features such as windows, brick, carpets, paint and other material colours may vary and also the specification of fittings may vary. Any furnishings and furniture shown are not included in any sale. Please check with a member of our sales team for details of the exact specification for each property type and the associated prices.



The Wellington



Kitchen/Lounge/ Dining room

5.40m x 7.56m

17'8" x 24'9"

Bedroom 1

4.00m x 2.99m

14'0" x 9'11"

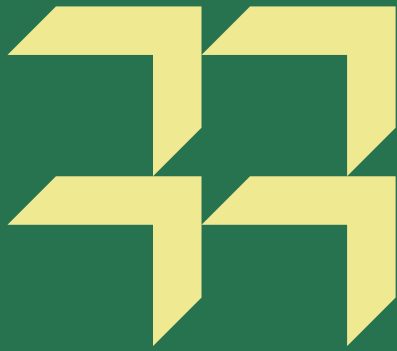
Bedroom 2

4.00m x 3.33m

14'0" x 11'0"

**All dimensions are
maximum sizes**

Dimensions stated are to be used as guidance only and should not be used as a basis for furnishings, furniture or appliance spaces. Dimensions for such purposes must be verified against actual site measurements. Please note the handing of plots may vary from the floor plans shown. All images are used for illustrative purposes only and are representative only. They may not be the same as the actual home you purchase and the specification may differ. Images may be of a slightly different model of home, individual features such as windows, brick, carpets, paint and other material colours may vary and also the specification of fittings may vary. Any furnishings and furniture shown are not included in any sale. Please check with a member of our sales team for details of the exact specification for each property type and the associated prices.



Our commitment to you

Before you move

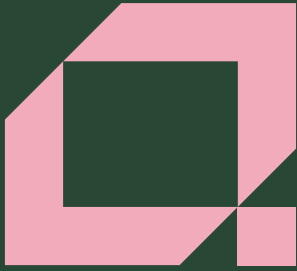
- Our friendly sales team will provide you with support and guidance throughout the home buying process
- At pre-reservation stage you will be shown details of the appearance and location of your chosen new home, together with all relevant surrounding information
- The reservation agreement will set out the key terms of your home purchase, including the reservation period, purchase price and other important information
- We will go through the specification and layout of your home and details of any pre-contractual information to enable you to make an informed decision
- We will inform you of your main point of contact who will assist you with information during your reservation and after you have moved into your new home
- We will regularly communicate with you to keep you informed of the progress of your new home and your dedicated point of contact will respond to any queries you may have
- We want to make your move as enjoyable as possible and our welcoming and knowledgeable staff will be with you every step of the way to provide a service that is tailored to you and your needs.

When/after you move in

- On the day you move a dedicated sales advisor will welcome you to your new home
- A detailed homecare booklet will be provided to help you settle in
- Shortly after you have moved in, we will make courtesy calls/visits to ensure you are happy with your new surroundings
- Your new home is covered by an NHBC or similar industry regulated 10-year insurance scheme covering the fabric and structural integrity of your new home.


We do value your comments and feedback so we can continually improve and enhance our service. If you have any comments you'd like to share with us, please contact: 0345 601 9095 or newhomessales@amplius.co.uk







For sales enquiries

Amplius, K2, Timbold Drive, Kents Hill,
Milton Keynes MK7 6BZ

 0345 601 9095

 newhomessales@amplius.co.uk

 amplius.co.uk

Further information relating to Amplius can be accessed via our
website: amplius.co.uk

The information contained within this booklet is offered in good faith
and is believed to be correct. However, accuracy is not guaranteed.
No liability will attach to Amplius, their representatives or agents in
respect of any statement contained here.