

# ST ANDREW'S MEADOW

• BACTON •



## 3 bedroom detached house

Plots 19, 39\*

### GROUND FLOOR

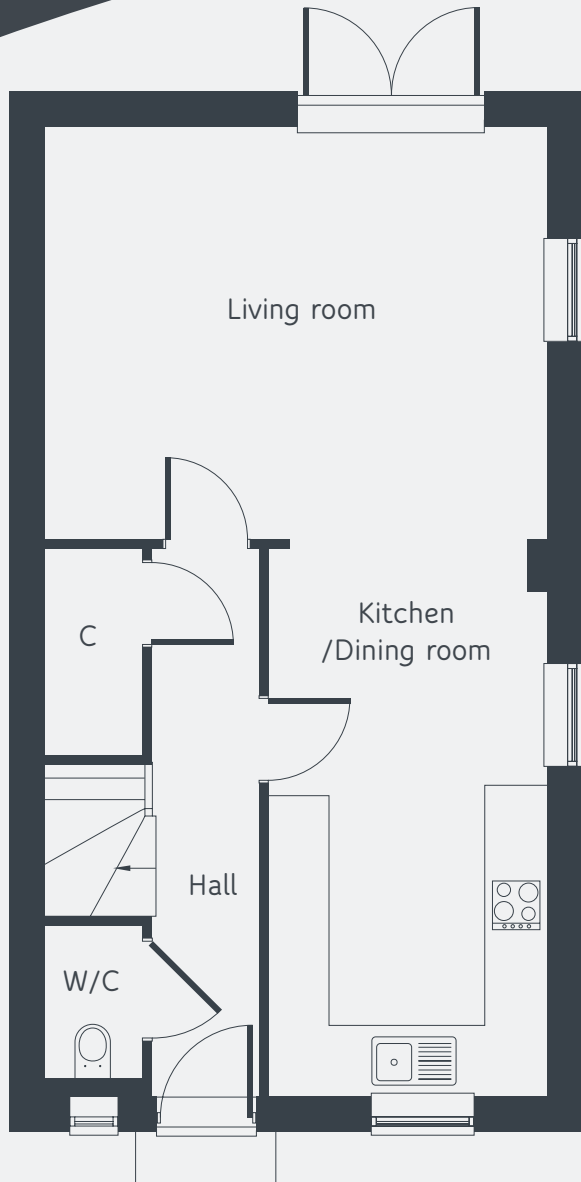
Kitchen/Dining room	5.62m x 2.82m	18'5" x 9'3"
Living Room	5.32m x 4.25m	17'5" x 13'11"

### FIRST FLOOR

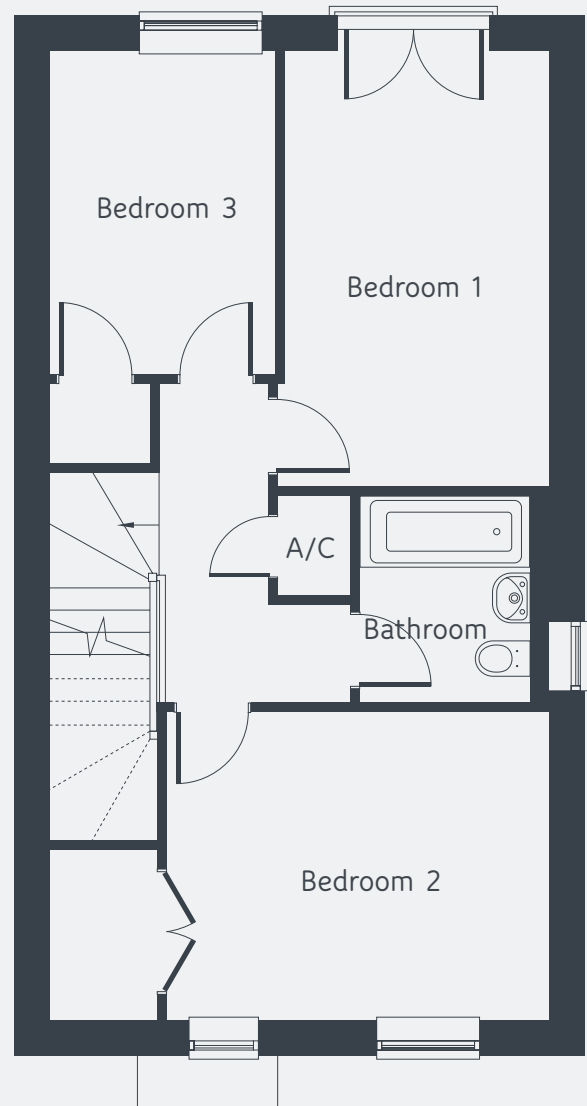
Bedroom 1	4.48m x 2.82m	14'8" x 9'3"
Bedroom 2	4.08m x 3.17m	13'5" x 10'5"
Bedroom 3	3.35m x 2.42m	11'0" x 7'11"

# ST ANDREW'S MEADOW

• BACTON •



GROUND FLOOR



FIRST FLOOR

Total floor space: 1001 sq ft / 93 sq m

\*Plot 39 is handed. Floor plans and computer generated images are indicative only and external finished may vary. Dimensions shown may vary within a tolerance of +/- 50mm and are not intended to be used for carpet sizes, appliance sizes or items of furniture. Floor plans are not shown to scale.