



DETAILS

HORSHAM

FURZEFIELD



WEALD LIVING  
BY SAXON WEALD

FURZEFIELD  
••• HORSHAM •••

PHASE 1B. MODERN TWO-BEDROOM HOMES IN THE VIBRANT NEW MOWBRAY VILLAGE, PERFECT FOR MODERN LIVING.





# FURZEFIELD

••• HORSHAM •••

## A PLACE TO FLOURISH

Situated in the north of the historic market town of Horsham, Mowbray is a new village offering the best of country-town living. Furzefield is the latest new addition to the community. In time, Mowbray will also be home to new shops, open spaces, education and community facilities, while providing local employment.

Horsham town centre is bursting with charm and character, with an abundance of independent and well-known shops, cafes, and restaurants, as well as a weekly market. The area has an excellent selection of schools, including the new Bohunt, which is located at the heart of Mowbray village.

Built in partnership with CALA Homes, this collection of new homes at Furzefield will be available to purchase on a shared ownership basis from late spring 2026.



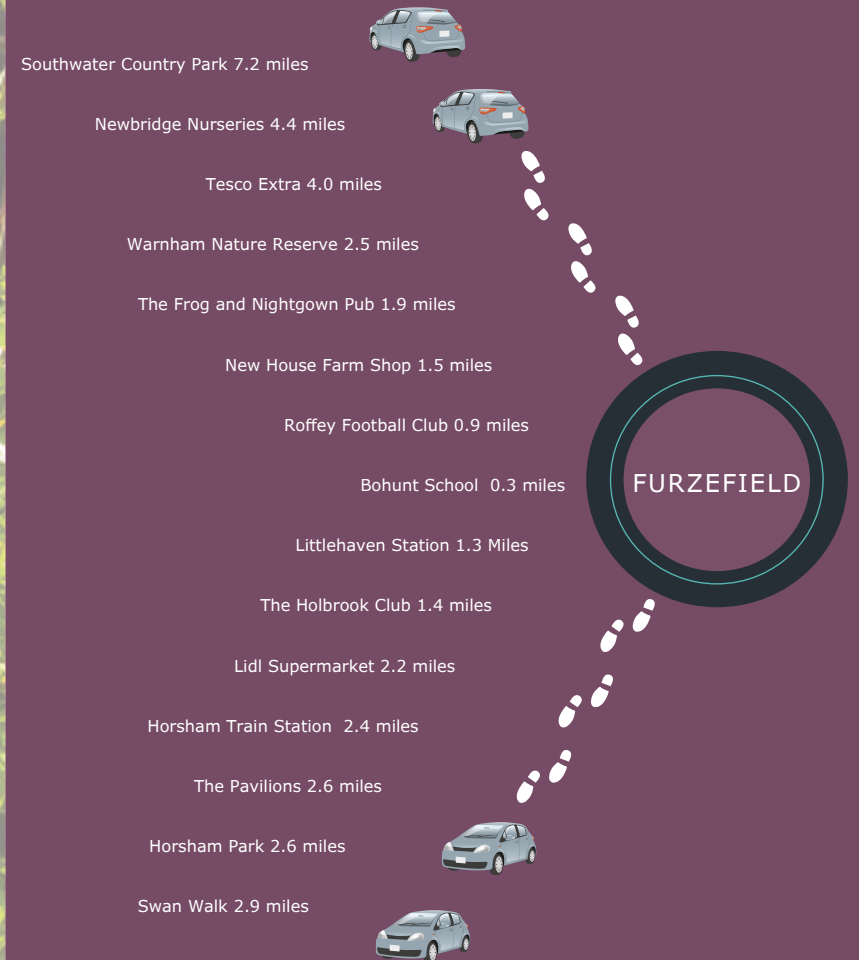
## CONVENIENCE AT ITS FINEST

Located at the heart of West Sussex, you'll find no shortage of green space to stretch your legs. Horsham Park offers a convenient oasis, while the South Downs and Sussex's beautiful countryside are in easy reach. If walking isn't your thing, you can take to the water at Southwater Country Park, or venture into Horsham town centre for a leisurely shopping trip and spot of lunch. With plenty to explore and discover, Horsham offers something for everyone.

Just off the A264, with easy access to the A24 and M23, Mowbray village also enjoys excellent road links to the likes of Guildford, Crawley, and the south coast. Littlehaven and Horsham train stations offer regular trains to Gatwick, London Victoria, London Bridge, and Brighton, making Furze field an ideal spot for commuters and culture lovers alike.



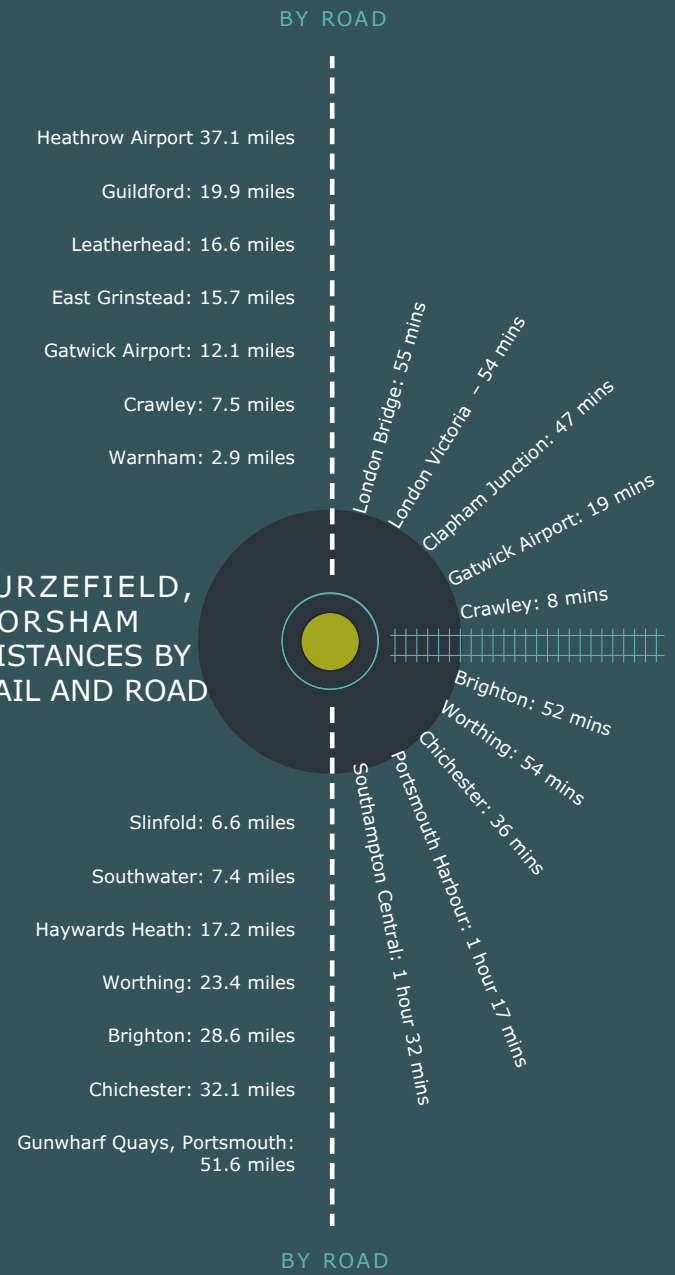
## OUT AND ABOUT IN THE LOCAL AREA



Distances are approximate based on easiest routes by road using directions from Google Maps



## FURZEFIELD, HORSHAM DISTANCES BY RAIL AND ROAD



BY RAIL  
HORSHAM TO...

Please note: distances and times are approximate. Information has been collated using Google Maps and National Rail.



## SITE PLAN

### KEY

- WEALD LIVING Shared ownership
- SAXON WEALD Affordable rent
- ALL OTHERS CALA HOMES Sales properties





PLOTS 103 & 104 FURZEFIELD  
(MARIGOLD WAY)  
TWO BEDROOM SEMI DETACHED HOUSES



Please note that these property images are computer generated images (CGIs). They are provided to give an indication of how your property may look but should be viewed as examples only. Illustrations do not highlight the gradient of outside space or location of manhole covers, sheds, or paving and the final layout of the garden may change. Weald Living reserves the right to make changes to plans, finishes and details prior to exchange of contracts.

PLOTS 108 & 109 FURZEFIELD  
(MARIGOLD WAY)  
TWO BEDROOM SEMI DETACHED HOUSES



PLOTS 117 & 118 FURZEFIELD  
(ORIEL ROAD)  
TWO BEDROOM SEMI DETACHED HOUSES

# FURZEFIELD

## TWO BEDROOM SEMI-DETACHED HOUSES

PLOTS 103, 108 & 117 (AS)  
104, 109 & 118 (OPP)

All the space you need at a price you can afford; our contemporary two-bedroom homes are an ideal option for first time buyers.

Spacious and flooded with natural light from the patio doors, the living/dining area is ideal for both entertaining and relaxing at the end of a long day. Meanwhile, a modern kitchen, with integrated appliances, is situated separately at the front of the house. Upstairs, these properties feature a bright and airy master bedroom, a generously sized second bedroom, as well as a contemporary bathroom. Generous storage cupboards, a downstairs WC, private garden, and allocated parking complete these stylish homes.

### AREAS

Ground floor	m
Living / dining area*	4.4 x 4.3
Kitchen	1.9 x 4.3
WC	1.0 x 1.7
First floor	
Bedroom one	4.4 x 3.1
Bedroom two*	4.4 x 3.2
Bathroom	1.9 x 2.2
Total Area	76 m <sup>2</sup>

\* Measurements are shown at their widest points

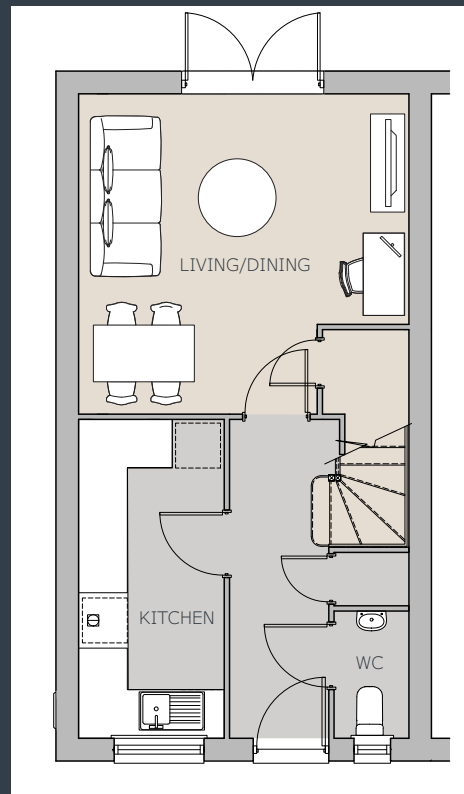
Computer generated images and photos are indicative of how your property may look and are examples only. These images are not to scale, please refer to measurements.

Floorplans shown are indicative only. All room sizes are approximate with maximum dimensions of finished measurements. Indicative measurements are taken at the widest points.

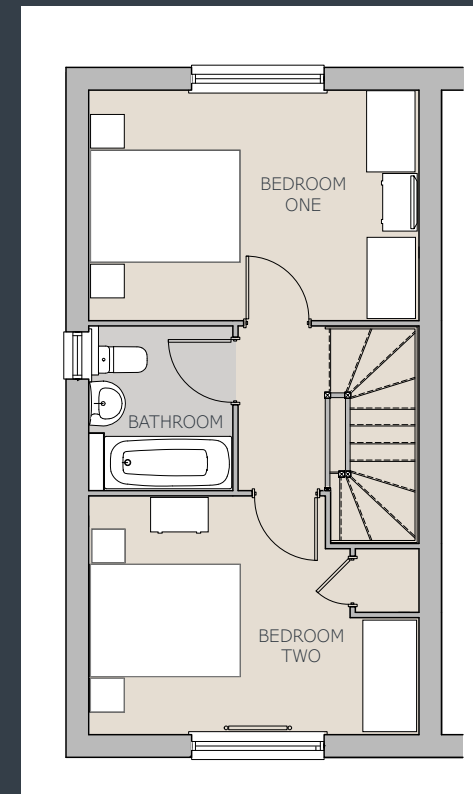
These plans provide indicative details of the property including kitchen/bathroom layouts, balconies/gardens etc. All dimensions indicated are approximate and should not be relied upon for floor treatments or home furnishings. Weald Living reserves the right to make changes to these plans prior to exchange of contracts.

Plans do not highlight the gradient of outside space or location of manhole covers, sheds, or paving. The final layout of the garden may change.

### Ground floor



### First floor





## AN EYE FOR DETAIL

Moving into a new home is a fresh and exciting start. We keep the décor of our properties attractive yet understated, giving you the perfect blank canvas ready to make your own. Sleek kitchens and contemporary bathrooms are finished to a modern specification to complement your style perfectly.

Outside, these homes benefit from private gardens. So, whether you're bringing family and friends together or prefer some peace and quiet, there's an outdoor space to enjoy. Allocated parking is also provided for each home.



Computer generated images and photos are indicative of how your property may look and are examples only. Layouts and finishings may vary.



## SPECIFICATION

### Kitchen

- Modern fully fitted KKC Eco Metro range kitchen in Grey Mist
- Work surface – India White and silver glass splashback
- Integrated Indesit appliances, including electric oven and cooker hood, electric hob, fridge freezer, washer dryer and dishwasher
- White LED downlighters and pelmet lighting

### Bathroom

- Fully fitted bathroom with shower over bath
- Wall tiles in Lenox bone surrounding bath and splashback behind basin
- Heated chrome towel rail
- Glazed shower screen

### General

- PVCu high efficiency double glazed windows
- Airing cupboard with shelving
- Smoke detector and carbon monoxide alarm
- Gas central heating with Ideal Logic combi boiler
- Cormar carpet in Florin and Amtico board flooring in Sunbleached Oak

Information supplied at the time of print (April 2026). Specifications may be subject to change and do not form part of any contract or constitute an offer.





## REGISTER YOUR INTEREST

Our homes at Furze field are available to purchase on a shared ownership basis. Shared ownership allows you to buy a share in a property and pay rent on the remainder. Over time and as your finances allow, you can increase your share to up to 100%.

### Register

To register your interest or apply for a property, please click on the 'Apply for a property' button on our website and complete the [shared ownership application form](#). If you already own your home, or own a home under a shared ownership scheme, you can still apply for Weald Living shared ownership provided you have an offer on your current home. You'll need to be at least 18 years old to be able to obtain a mortgage.

### Affordability

Household income requirements will differ from development to development, in line with factors such as current house prices and the share for sale. The general guidelines state that you must have a combined household income of less than £80,000 per year outside of London. Weald Living will perform checks to ensure you can afford

to purchase and sustain the housing costs before offering you a home.

You will need approximately £5,000 to cover the costs of purchasing a home. These costs cover things like; the reservation fee, mortgage valuation fee, mortgage arrangement fees, solicitors' fees, removal costs and utility connection charges.

Please see our website [www.wealdliving.com](http://www.wealdliving.com) for up-to-date property prices.

### Apply now

Shared ownership makes it possible to own your own home. If you think you are eligible to buy a Weald Living shared ownership home, please complete the [shared ownership application form](#) on our website.



## INTRODUCING WEALD LIVING

Weald Living is a part of Saxon Weald, providing properties for outright sale, shared ownership and private market rent across Sussex and Hampshire.

Saxon Weald, established in 2000, is a non-profit making housing association and manages around 7,000 properties. 83% of our properties are for affordable rent and the rest are Weald Living shared ownership or leasehold homes.

We are highly experienced in both property management and maintenance, and value our role as a leading provider of affordable housing in the Horsham district.



Saxon Weald supports the development of mixed tenure sites and is proud to provide homes for shared ownership and affordable rent at FurzeField. We may change the tenure of some properties subject to demand.



FURZEFIELD  
 RUSPER ROAD,  
 HORSHAM,  
 WEST SUSSEX,  
 RH12 6AT



WEALD LIVING  
 BY SAXON WEALD

Weald Living, Saxon Weald House,  
 38-42 Worthing Road,  
 Horsham, West Sussex, RH12 1DT  
 t: 01403 226060  
 e: sales@wealdliving.com

[www.wealdliving.com](http://www.wealdliving.com)