



Fulham
QUARTER

LONDON SW6

CONTEMPORARY LIVING IN ONE OF LONDON'S
MOST DESIRABLE NEIGHBOURHOODS

- SHARED OWNERSHIP APARTMENTS -



COMPUTER GENERATED IMAGE

Fulham QUARTER

LONDON SW6

Introducing a brand new collection of
1, 2 and 3 bedroom apartments available for
sale through Shared Ownership[†]

WELCOME

Fulham Quarter is a contemporary new neighbourhood,
offering thoughtfully designed homes in one of West
London's most established communities.

Rooted in Fulham's industrial heritage and reimagined for
modern living, Fulham Quarter introduces sustainable new
homes alongside landscaped public spaces, creating a
welcoming place to live, relax and connect, just moments
from the River Thames, local markets and neighbouring
Chelsea and Kensington.



FULHAM ROAD



PARON'S GREEN

NEIGHBOURHOOD *Life*



FULHAM PIER



DUKE OF YORK SQUARE, CHELSEA



Fulham Quarter sits at the heart of a lively and well-connected part of West London, surrounded by everyday conveniences, green spaces and some of the capital's most desirable neighbourhoods. Close to Chelsea, Kensington and Putney, the area offers easy access to world-class shopping, culture, sport and dining, while retaining a strong sense of local character.

North End Road forms a vibrant local hub, renowned for its historic street market, independent grocers and bakeries such as The Bread Lab, alongside cafés, fresh produce stalls and long-established traders. Dining options range from the Michelin-starred The River Café to popular riverside destinations including Sam's Riverside and The Blue Boat. Brunch spots, casual eateries and coffee houses line nearby streets, while Fulham Broadway Retail Centre provides supermarkets, high-street shops and a cinema for everyday convenience.

Village charm, riverside walks and renowned dining, perfectly balanced with Central London accessibility.

Green spaces are a defining feature of the area. Eel Brook Common, Normand Park and South Park offer places to unwind, exercise or enjoy family time, while Bishops Park and the Thames Path provide scenic riverside walks towards Hammersmith and Putney. Cultural landmarks such as Fulham Palace, Riverside Studios and the iconic Hammersmith Apollo add depth and variety to local life.

Sporting heritage is close by, with Fulham Football Club, Chelsea Football Club, Queen's Club and Hurlingham Polo Club all within easy reach. The redeveloped Fulham Pier introduces a hoast of stylish waterfront amenities.

Fulham Quarter places residents at the centre of a rich and well-balanced London lifestyle.



LONDON *links*

BY TUBE FROM PARSONS GREEN

- Putney Bridge
2 min
- Wimbledon
14 min
- West Brompton
6 min
- Earl's Court
8 min
- Southfields
10 min
- Richmond
28 min

BY TUBE FROM BARONS COURT

- Piccadilly Circus
15 min
- Leicester Square
15-18 min
- Covent Garden
17 min
- Green Park
14-17 min
- Heathrow Airport Terminals
30 mins
- Acton Town
6-9 min

ON FOOT FROM FULHAM QUARTER

- Fulham Broadway
0.9 miles
- Bishops Park
1.0 mile
- River Thames
0.8 miles
- Chelsea Harbour
1.1 miles
- Hammersmith Broadway
1.3 miles
- Fulham Palace
1.4 miles

BY BICYCLE FROM FULHAM QUARTER

- Putney Bridge
1.4 miles
- King's Road, Chelsea
1.9 miles
- Kensington High Street
2.1 miles
- Hyde Park
3.0 miles
- South Kensington
2.6 miles
- Battersea Park
3.2 miles

GETTING *around*

Fulham Quarter benefits from excellent transport connections across London. Parsons Green Underground station is approximately a 15-minute walk, providing District line services to Victoria in around 18 minutes and Westminster in 22 minutes. Barons Court station is a 17-minute walk, offering both Piccadilly and District line services, with direct journeys to Heathrow Airport in approximately 35 minutes and Covent Garden in around 20 minutes. Numerous bus routes and cycle paths further enhance connectivity.

Walk to nearby stations and enjoy fast, direct routes across the capital.

Map not to scale. Source travel times: tf.gov.uk, google.co.uk/maps. Times are approximate.

KITCHEN

- Fitted Symphony kitchens in New York Pearl Grey
- Handleless, soft close wall and base units
- Cutlery tray and ecobins
- Electric Smeg single stainless steel oven with induction hob
- Smeg Silver grey canopy extractor hood
- Smeg integrated 70:30 fridge /freezer
- Worktops with matching splashback and up-stands
- 1.5 bowl sink
- White Smeg freestanding washing machine

BATHROOMS & ENSUITES

- White gloss sanitaryware
- White 1700 x 700mm bath with feet
- Chrome Hansgrohe taps and shower head
- Hansgrohe thermostatic shower mixer for concealed installation
- Glass Edwrox outward opening bath screen
- Kappa concealed cistern and duel chrome flush plate
- Triple Door Mirror Cabinet
- Chrome toilet roll holder
- Chrome Heated towel rail
- Cream 300 x 600mm wall tiles

FLOORING

- Cormar Sensations carpets to bedrooms in Venture Opal
- Engineered wood flooring to living room, kitchen, dining room, utility and hallways in 'Oak Authentic' plank
- Pyro & Echo Farmstead 600 x 600mm floor tiles in Pale Grey to bathrooms

HEATING

- **Thermostatically controlled through Hive?**
- Air source heat pump
- Radiators throughout

ELECTRICAL

- Deta Slimline sockets and switches throughout
- Downlights to kitchen and master bedroom
- Tv + BT sockets to master bedroom and living area
- Pre-wired for Sky Q

SECURITY

- Smoke detectors
- Audio/Visual Door Entry System

GENERAL

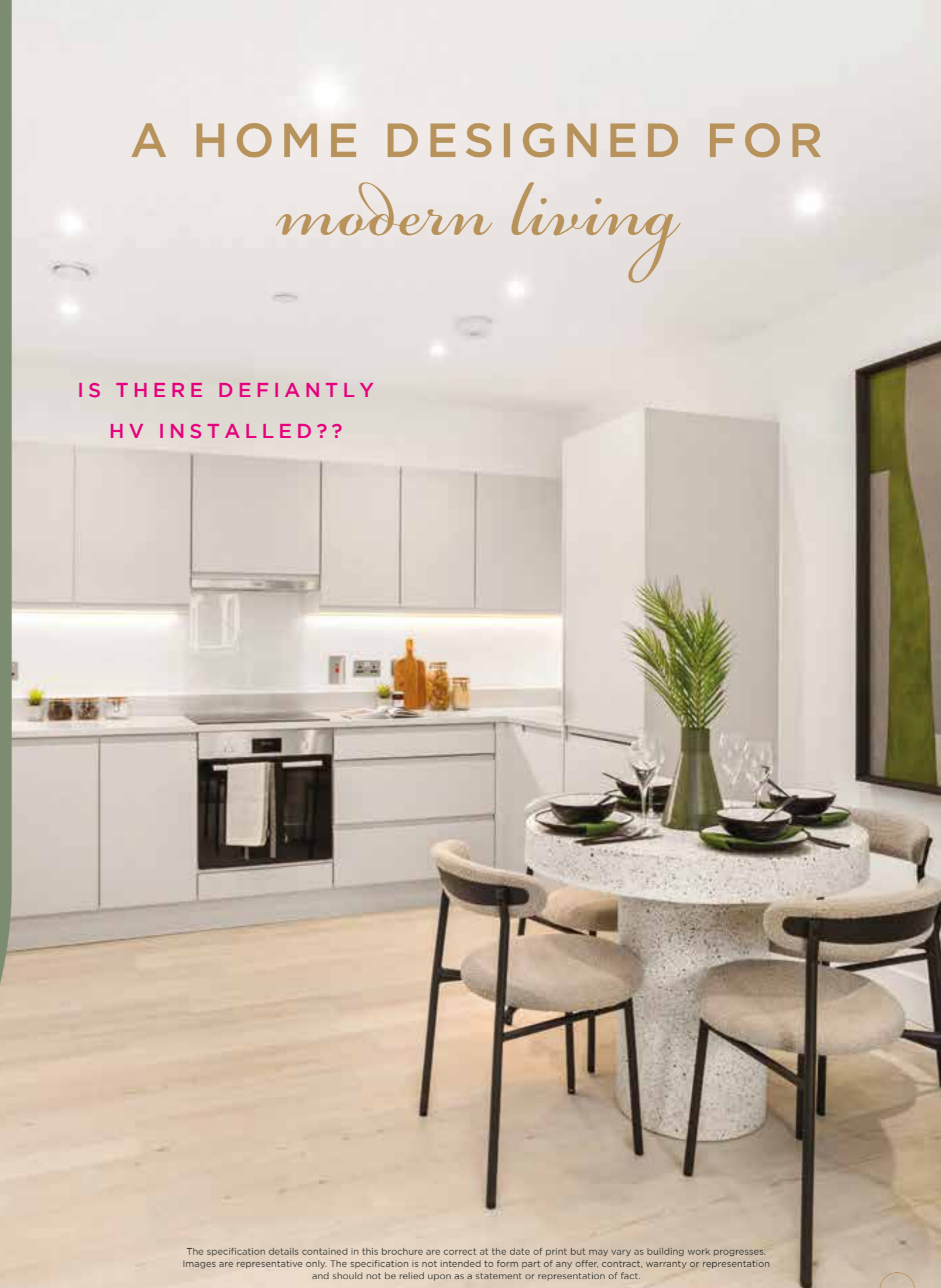
- Balcony to all apartments
- Lift to all floors

WARRANTY

- 10 year structural warranty provided
- by AHCI Insurance

A HOME DESIGNED FOR *modern living*

IS THERE DEFIANTLY
HV INSTALLED??



The specification details contained in this brochure are correct at the date of print but may vary as building work progresses. Images are representative only. The specification is not intended to form part of any offer, contract, warranty or representation and should not be relied upon as a statement or representation of fact.

SITE PLAN

Add tenure mix,
cycle store key, bin
store, lifts, stairs and
entrances
TO BE ADVISED

BLOCK C

ENTRANCE

ENTRANCE

BLOCKS A & B

The above site plan is for illustrative purposes only. The landscaping, apartment designs, boundaries and positions of roads and footpaths and other facilities or amenities may change as the development proceeds. Month 2026. Please speak to our Sales Consultant for further information.

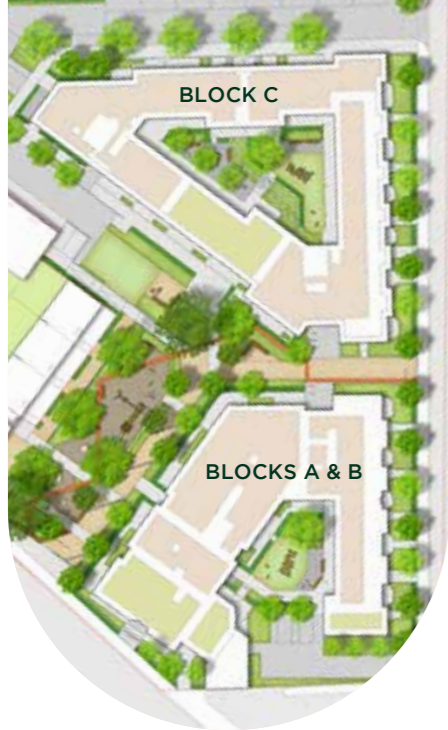


Fulham QUARTER

LONDON SW6

SHARED OWNERSHIP
FLOORPLANS

COMPUTER GENERATED IMAGE



SHARED OWNERSHIP PLOT LOCATOR

BLOCK C



Third Floor



Second Floor

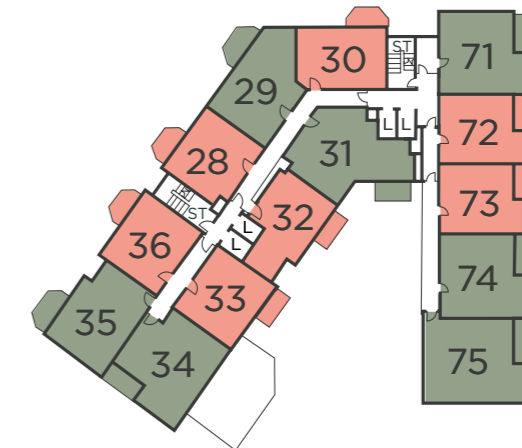
KEY

- 1 bedroom apartment
- 2 bedroom apartment
- 3 bedroom apartment

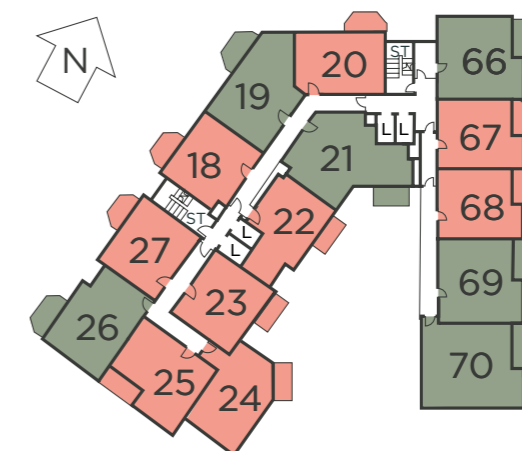
BLOCKS A & B



Fourth Floor



Third Floor



Second Floor

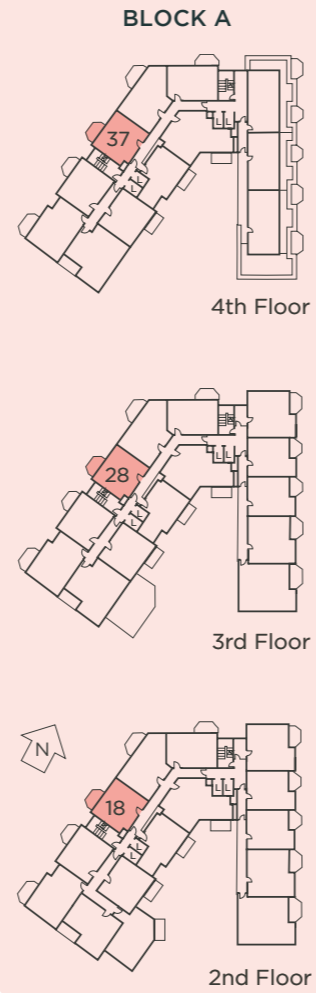
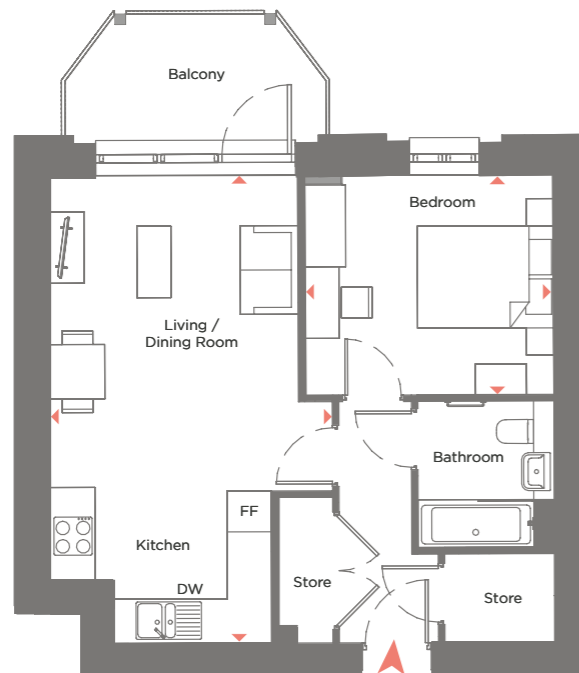
- KEY:
- L Lifts
 - ST Stairs

Point from which maximum dimensions are measured. Dimensions are intended for guidance only. The developer reserves the right to vary as necessary to complete works. All measurements and areas may vary by approximately 5%. External space is indicative only. We operate a policy of continuous product development and features may, therefore, vary from time to time. This information does not constitute a contract, part of a contract or warranty. They are not intended to be used for carpet sizes, appliance sizes or items of furniture.

SHARED OWNERSHIP

PLOTS 18, 28, 37

ONE BEDROOM APARTMENT



DIMENSIONS **TOTAL AREA: 50.0 SQ M 538 SQ FT**

	Length	Width	Length	Width
LIVING / DINING / KITCHEN	6.93m	x 3.68m	22' 8"	x 12' 0"
BEDROOM	3.70m	x 3.27m	12' 1"	x 10' 8"

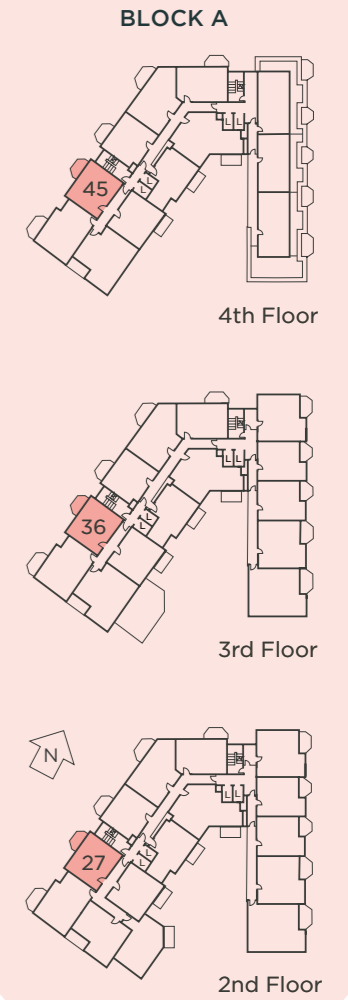
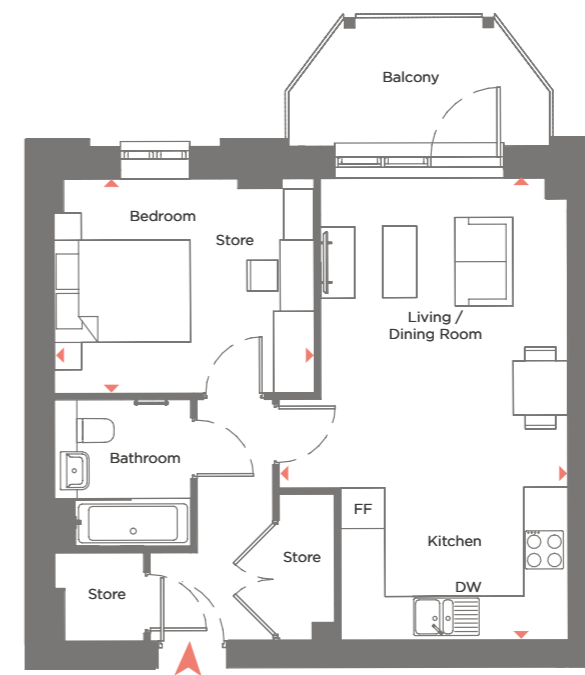
- KEY:**
- FF Fridge Freezer
 - WM Washing machine
 - DW Dishwasher
 - S Store

Point from which maximum dimensions are measured. Dimensions are intended for guidance only. The developer reserves the right to vary as necessary to complete works. All measurements and areas may vary by approximately 5%. External space is indicative only. We operate a policy of continuous product development and features may, therefore, vary from time to time. This information does not constitute a contract, part of a contract or warranty. They are not intended to be used for carpet sizes, appliance sizes or items of furniture.

SHARED OWNERSHIP

PLOTS 27, 36, 45

ONE BEDROOM APARTMENT



DIMENSIONS **TOTAL AREA: 50.7 SQ M 546 SQ FT**

	Length	Width	Length	Width
LIVING / DINING / KITCHEN	6.78m	x 3.67m	22' 2"	x 12' 0"
BEDROOM	3.86m	x 3.19m	12' 7"	x 10' 5"

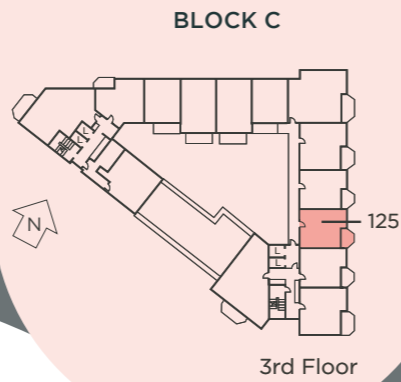
- KEY:**
- FF Fridge Freezer
 - WM Washing machine
 - DW Dishwasher
 - S Store

Point from which maximum dimensions are measured. Dimensions are intended for guidance only. The developer reserves the right to vary as necessary to complete works. All measurements and areas may vary by approximately 5%. External space is indicative only. We operate a policy of continuous product development and features may, therefore, vary from time to time. This information does not constitute a contract, part of a contract or warranty. They are not intended to be used for carpet sizes, appliance sizes or items of furniture.

SHARED OWNERSHIP

PLOT 125

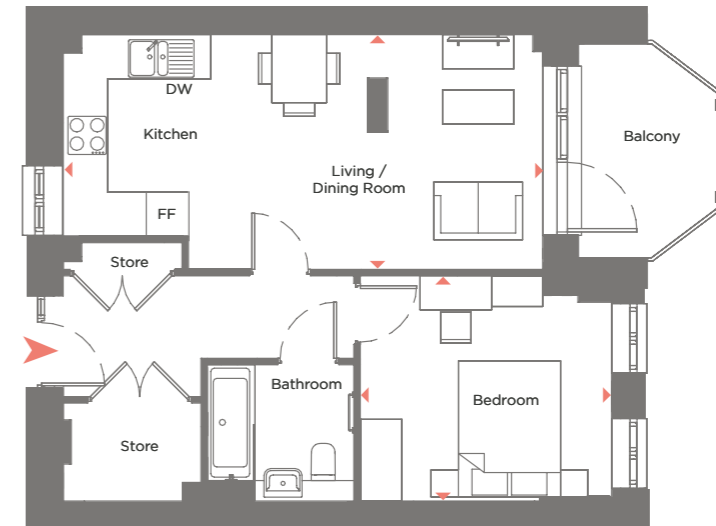
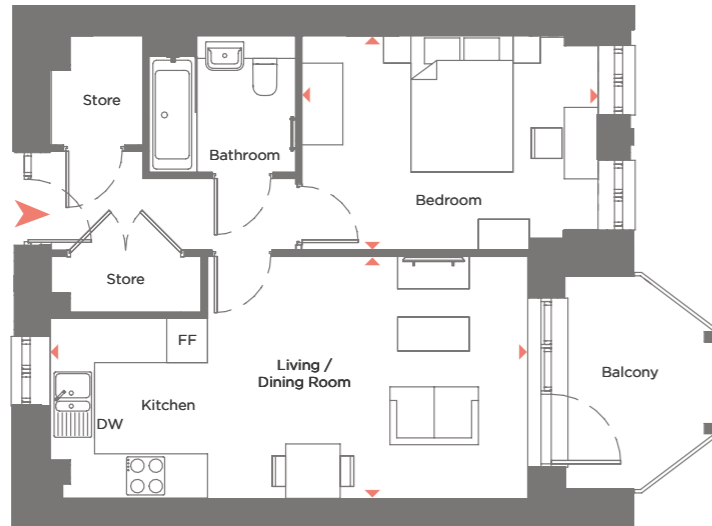
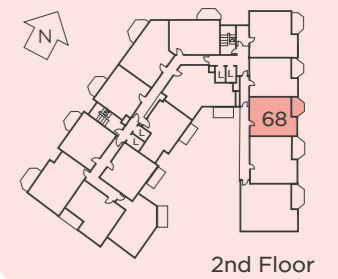
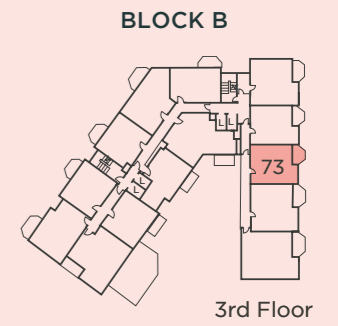
ONE BEDROOM APARTMENT



SHARED OWNERSHIP

PLOT 68, 73

ONE BEDROOM APARTMENT



DIMENSIONS TOTAL AREA: 50.9 SQ M 548 SQ FT

	Length	Width	Length	Width
LIVING / DINING / KITCHEN	7.09m	x 3.60m	23' 3"	x 11' 9"
BEDROOM	4.40m	x 3.19m	14' 5"	x 10' 5"

- KEY:**
- FF Fridge Freezer
 - WM Washing machine
 - DW Dishwasher
 - S Store

DIMENSIONS TOTAL AREA: 51.5 SQ M 554 SQ FT

	Length	Width	Length	Width
LIVING / DINING / KITCHEN	7.10m	x 3.49m	23' 3"	x 11' 5"
BEDROOM	3.73m	x 3.29m	12' 2"	x 10' 9"

- KEY:**
- FF Fridge Freezer
 - WM Washing machine
 - DW Dishwasher
 - S Store

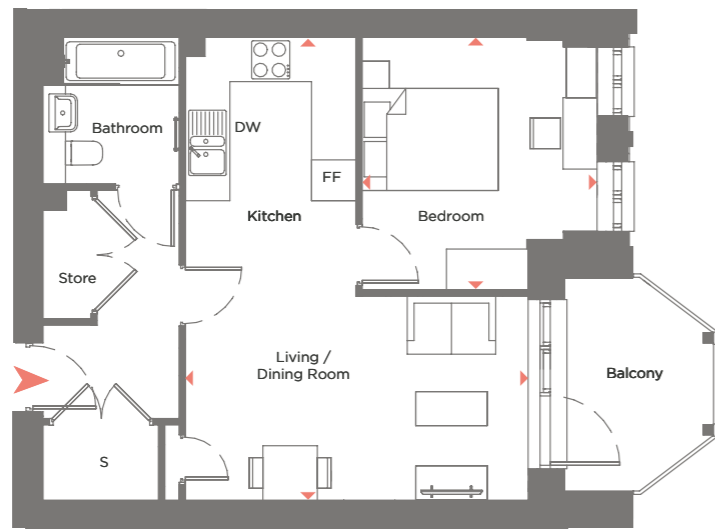
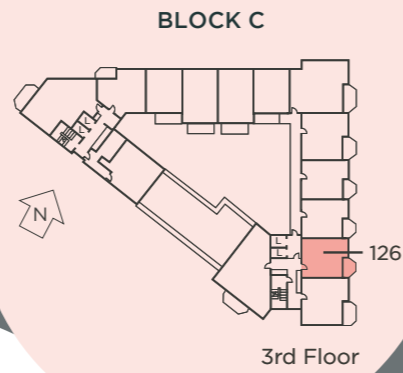
Point from which maximum dimensions are measured. Dimensions are intended for guidance only. The developer reserves the right to vary as necessary to complete works. All measurements and areas may vary by approximately 5%. External space is indicative only. We operate a policy of continuous product development and features may, therefore, vary from time to time. This information does not constitute a contract, part of a contract or warranty. They are not intended to be used for carpet sizes, appliance sizes or items of furniture.

Point from which maximum dimensions are measured. Dimensions are intended for guidance only. The developer reserves the right to vary as necessary to complete works. All measurements and areas may vary by approximately 5%. External space is indicative only. We operate a policy of continuous product development and features may, therefore, vary from time to time. This information does not constitute a contract, part of a contract or warranty. They are not intended to be used for carpet sizes, appliance sizes or items of furniture.

SHARED OWNERSHIP

PLOT 126

ONE BEDROOM APARTMENT



DIMENSIONS TOTAL AREA: 51.5 SQ M 554 SQ FT

	Length	Width	Length	Width
LIVING / DINING / KITCHEN	6.86m	x 5.08m	22' 6"	x 16' 8"
BEDROOM	3.75m	x 3.49m	12' 3"	x 11' 5"

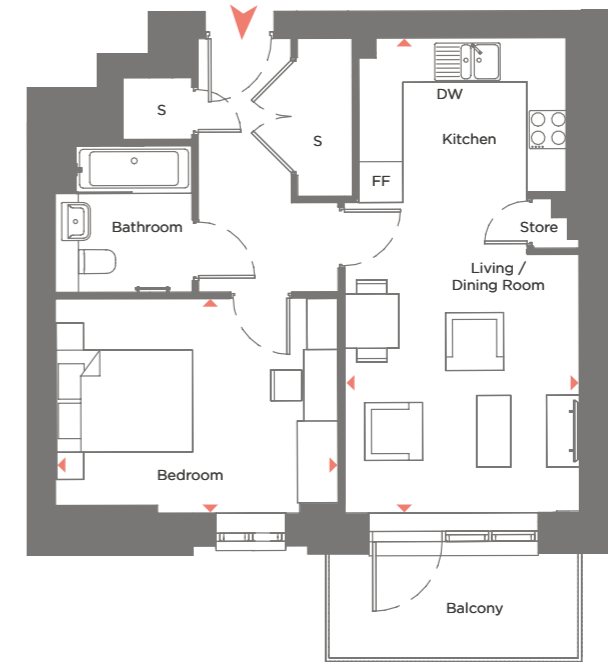
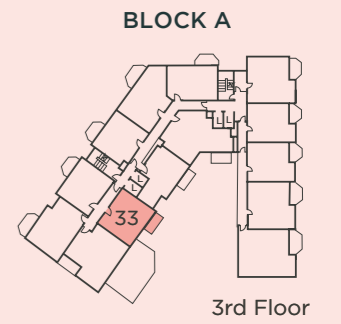
- KEY:**
- FF Fridge Freezer
 - WM Washing machine
 - DW Dishwasher
 - S Store

Point from which maximum dimensions are measured. Dimensions are intended for guidance only. The developer reserves the right to vary as necessary to complete works. All measurements and areas may vary by approximately 5%. External space is indicative only. We operate a policy of continuous product development and features may, therefore, vary from time to time. This information does not constitute a contract, part of a contract or warranty. They are not intended to be used for carpet sizes, appliance sizes or items of furniture.

SHARED OWNERSHIP

PLOT 23, 33

ONE BEDROOM APARTMENT



DIMENSIONS TOTAL AREA: 51.6 SQ M 555 SQ FT

	Length	Width	Length	Width
LIVING / DINING / KITCHEN	7.03m	x 3.16m	23' 0"	x 10' 4"
BEDROOM	4.19m	x 3.05m	13' 8"	x 10' 0"

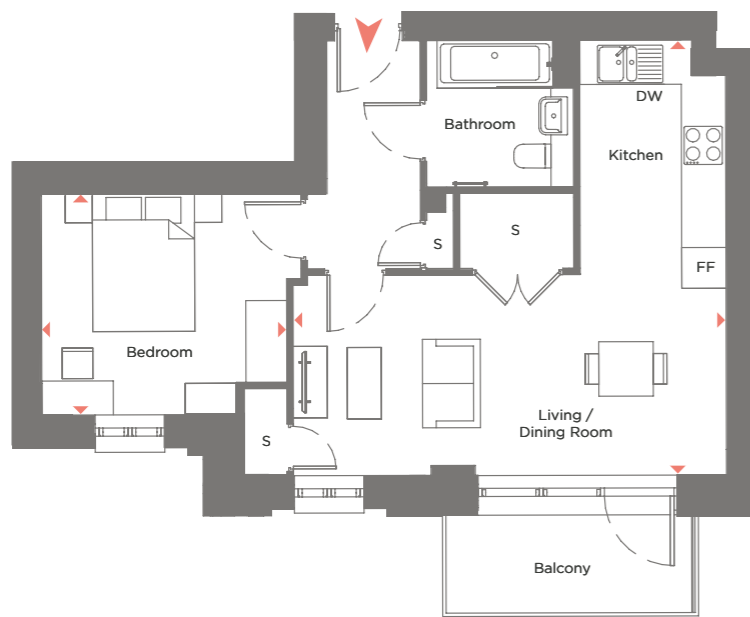
- KEY:**
- FF Fridge Freezer
 - WM Washing machine
 - DW Dishwasher
 - S Store

Point from which maximum dimensions are measured. Dimensions are intended for guidance only. The developer reserves the right to vary as necessary to complete works. All measurements and areas may vary by approximately 5%. External space is indicative only. We operate a policy of continuous product development and features may, therefore, vary from time to time. This information does not constitute a contract, part of a contract or warranty. They are not intended to be used for carpet sizes, appliance sizes or items of furniture.

SHARED OWNERSHIP

PLOT 22, 32, 41

ONE BEDROOM APARTMENT



DIMENSIONS **TOTAL AREA: 51.8 SQ M 557 SQ FT**

	Length	Width	Length	Width
LIVING / DINING / KITCHEN	6.45m	x 6.33m	21' 1"	x 20' 9"
BEDROOM	3.64m	x 3.28m	11' 11"	x 10' 9"

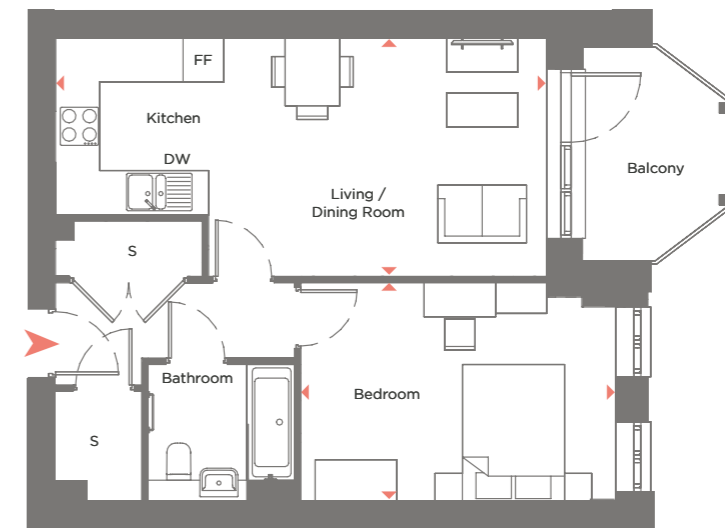
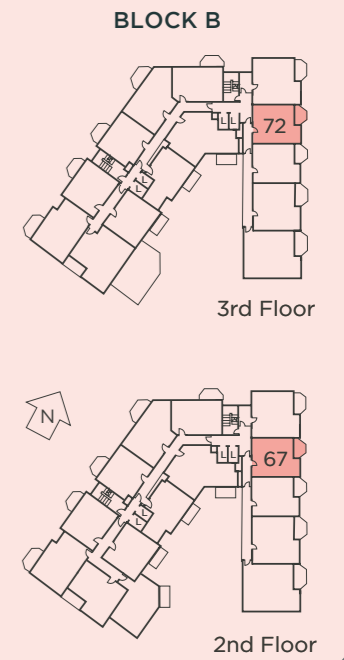
- KEY:**
- FF Fridge Freezer
 - WM Washing machine
 - DW Dishwasher
 - S Store

Point from which maximum dimensions are measured. Dimensions are intended for guidance only. The developer reserves the right to vary as necessary to complete works. All measurements and areas may vary by approximately 5%. External space is indicative only. We operate a policy of continuous product development and features may, therefore, vary from time to time. This information does not constitute a contract, part of a contract or warranty. They are not intended to be used for carpet sizes, appliance sizes or items of furniture.

SHARED OWNERSHIP

PLOT 67, 72

ONE BEDROOM APARTMENT



DIMENSIONS **TOTAL AREA: 52.0 SQ M 560 SQ FT**

	Length	Width	Length	Width
LIVING / DINING / KITCHEN	7.28m	x 3.54m	23' 10"	x 11' 7"
BEDROOM	4.67m	x 3.05m	15' 3"	x 10' 0"

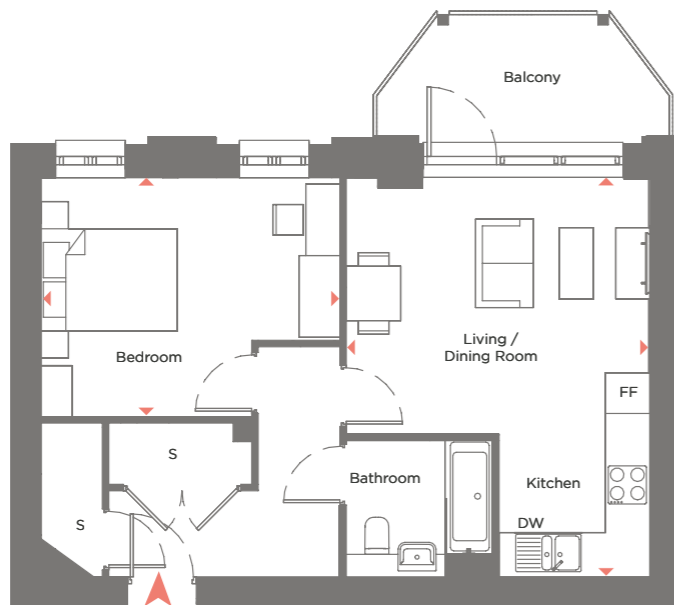
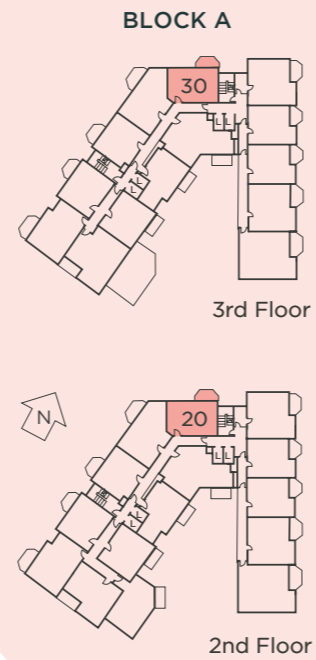
- KEY:**
- FF Fridge Freezer
 - WM Washing machine
 - DW Dishwasher
 - S Store

Point from which maximum dimensions are measured. Dimensions are intended for guidance only. The developer reserves the right to vary as necessary to complete works. All measurements and areas may vary by approximately 5%. External space is indicative only. We operate a policy of continuous product development and features may, therefore, vary from time to time. This information does not constitute a contract, part of a contract or warranty. They are not intended to be used for carpet sizes, appliance sizes or items of furniture.

SHARED OWNERSHIP

PLOT 20, 30

ONE BEDROOM APARTMENT



DIMENSIONS TOTAL AREA: 52.1 SQ M 561 SQ FT

	Length	Width	Length	Width
LIVING / DINING / KITCHEN	5.92m	x 4.47m	19' 5"	x 14' 7"
BEDROOM	4.33m	x 3.55m	14' 2"	x 11' 7"

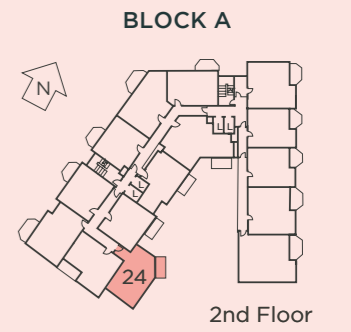
- KEY:**
- FF Fridge Freezer
 - WM Washing machine
 - DW Dishwasher
 - S Store

Point from which maximum dimensions are measured. Dimensions are intended for guidance only. The developer reserves the right to vary as necessary to complete works. All measurements and areas may vary by approximately 5%. External space is indicative only. We operate a policy of continuous product development and features may, therefore, vary from time to time. This information does not constitute a contract, part of a contract or warranty. They are not intended to be used for carpet sizes, appliance sizes or items of furniture.

SHARED OWNERSHIP

PLOT 24

ONE BEDROOM APARTMENT



DIMENSIONS TOTAL AREA: 55.8 SQ M 600 SQ FT

	Length	Width	Length	Width
LIVING / DINING / KITCHEN	9.34m	x 3.63m	30' 7"	x 11' 10"
BEDROOM	3.45m	x 3.42m	11' 3"	x 11' 2"

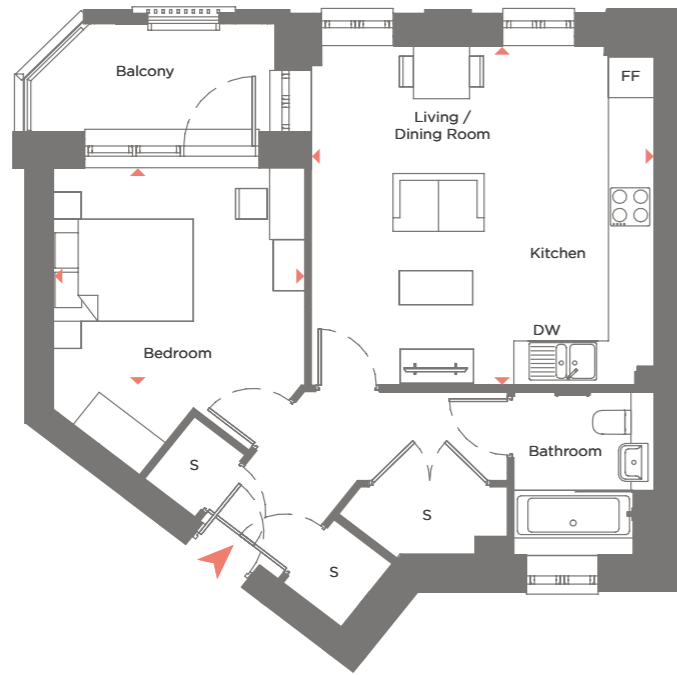
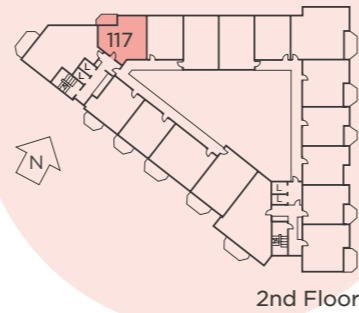
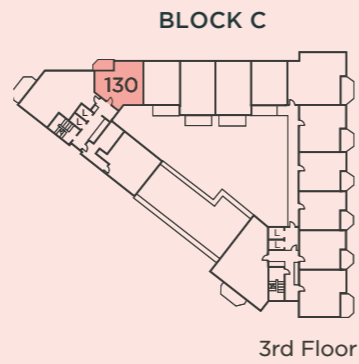
- KEY:**
- FF Fridge Freezer
 - WM Washing machine
 - DW Dishwasher
 - S Store

Point from which maximum dimensions are measured. Dimensions are intended for guidance only. The developer reserves the right to vary as necessary to complete works. All measurements and areas may vary by approximately 5%. External space is indicative only. We operate a policy of continuous product development and features may, therefore, vary from time to time. This information does not constitute a contract, part of a contract or warranty. They are not intended to be used for carpet sizes, appliance sizes or items of furniture.

SHARED OWNERSHIP

PLOT 117, 130

ONE BEDROOM APARTMENT



DIMENSIONS TOTAL AREA: 55.8 SQ M 600 SQ FT

	Length	Width	Length	Width
LIVING / DINING / KITCHEN	5.03m	4.93m	16' 6"	16' 2"
BEDROOM	3.20m	3.63m	10' 6"	11' 10"

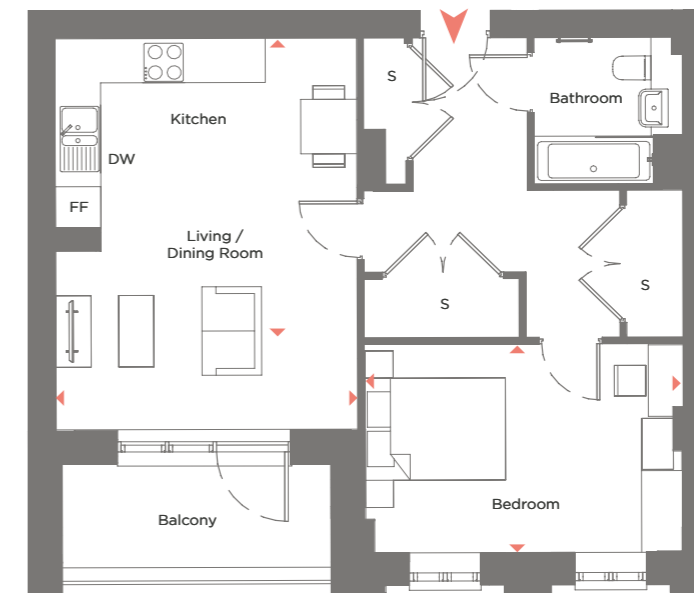
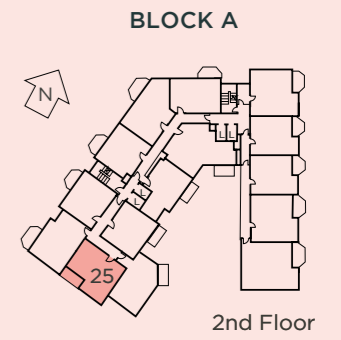
- KEY:**
- FF Fridge Freezer
 - WM Washing machine
 - DW Dishwasher
 - S Store

Point from which maximum dimensions are measured. Dimensions are intended for guidance only. The developer reserves the right to vary as necessary to complete works. All measurements and areas may vary by approximately 5%. External space is indicative only. We operate a policy of continuous product development and features may, therefore, vary from time to time. This information does not constitute a contract, part of a contract or warranty. They are not intended to be used for carpet sizes, appliance sizes or items of furniture.

SHARED OWNERSHIP

PLOT 25

ONE BEDROOM APARTMENT



DIMENSIONS TOTAL AREA: 59.8 SQ M 643 SQ FT

	Length	Width	Length	Width
LIVING / DINING / KITCHEN	4.52m	4.35m	14' 10"	14' 3"
BEDROOM	4.59m	3.11m	15' 0"	10' 2"

- KEY:**
- FF Fridge Freezer
 - WM Washing machine
 - DW Dishwasher
 - S Store

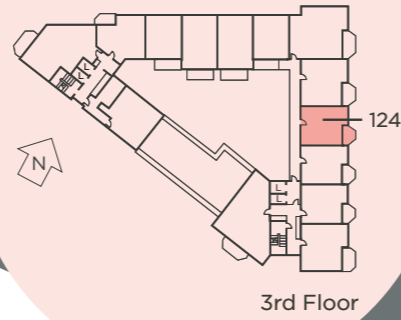
Point from which maximum dimensions are measured. Dimensions are intended for guidance only. The developer reserves the right to vary as necessary to complete works. All measurements and areas may vary by approximately 5%. External space is indicative only. We operate a policy of continuous product development and features may, therefore, vary from time to time. This information does not constitute a contract, part of a contract or warranty. They are not intended to be used for carpet sizes, appliance sizes or items of furniture.

SHARED OWNERSHIP

PLOT 124

ONE BEDROOM APARTMENT

BLOCK C

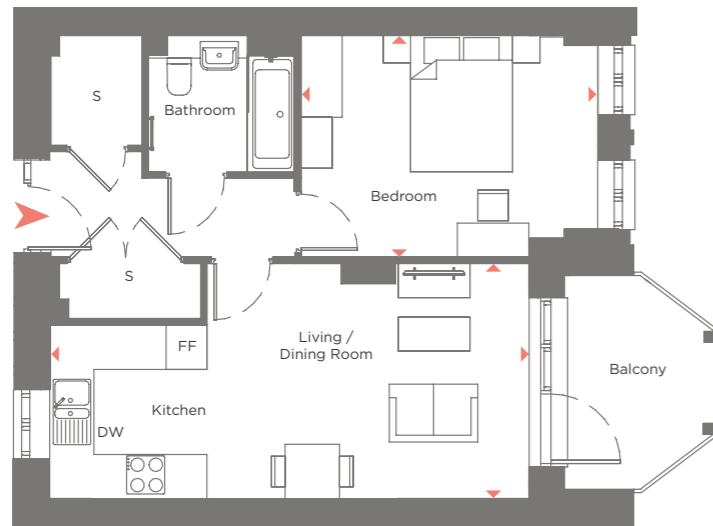
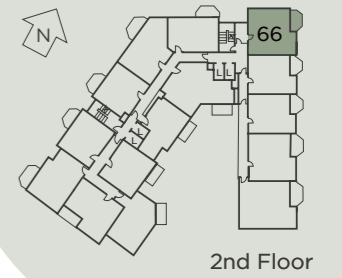
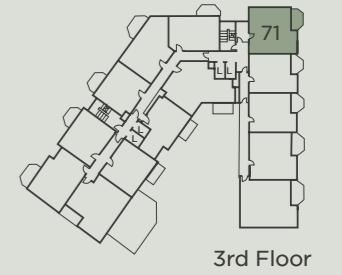


SHARED OWNERSHIP

PLOT 66, 71

TWO BEDROOM APARTMENTS

BLOCK B



DIMENSIONS

TOTAL AREA: 62.7 SQ M 675 SQ FT

	Length	Width	Length	Width
LIVING / DINING / KITCHEN	7.10m x 3.50m		23' 3" x 11' 5"	
BEDROOM	4.40m x 3.30m		14' 5" x 10' 9"	

KEY:

- FF** Fridge Freezer
- WM** Washing machine
- DW** Dishwasher
- S** Store



DIMENSIONS

TOTAL AREA: 61.9 SQ M 666 SQ FT

	Length	Width	Length	Width
LIVING / DINING / KITCHEN	7.28m x 3.00m		23' 10" x 9' 10"	
BEDROOM 1	3.71m x 2.78m		12' 2" x 9' 1"	
BEDROOM 2	3.86m x 2.19m		12' 7" x 7' 2"	

KEY:

- FF** Fridge Freezer
- WM** Washing machine
- DW** Dishwasher
- S** Store

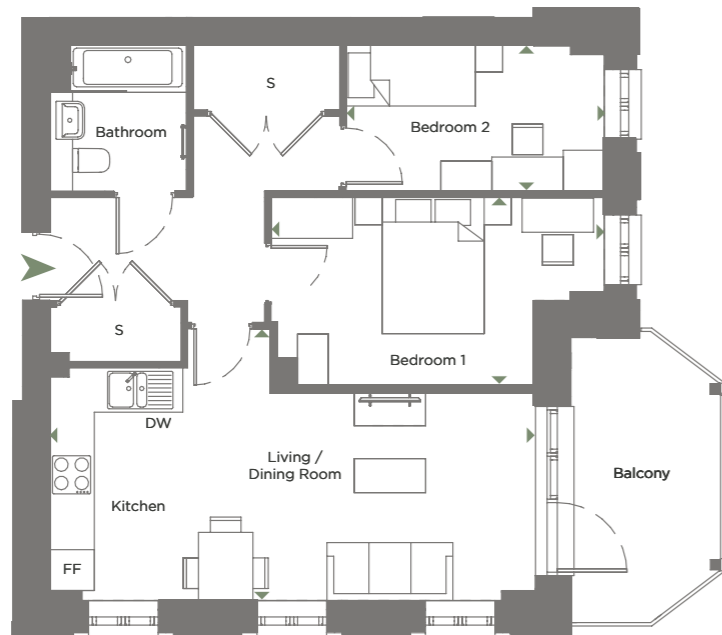
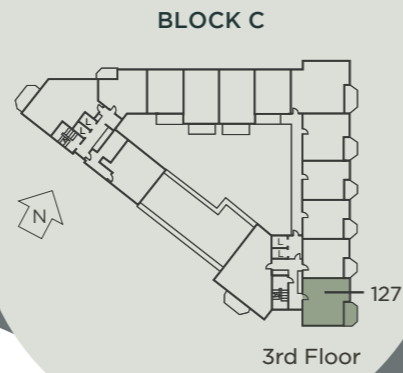
Point from which maximum dimensions are measured. Dimensions are intended for guidance only. The developer reserves the right to vary as necessary to complete works. All measurements and areas may vary by approximately 5%. External space is indicative only. We operate a policy of continuous product development and features may, therefore, vary from time to time. This information does not constitute a contract, part of a contract or warranty. They are not intended to be used for carpet sizes, appliance sizes or items of furniture.

Point from which maximum dimensions are measured. Dimensions are intended for guidance only. The developer reserves the right to vary as necessary to complete works. All measurements and areas may vary by approximately 5%. External space is indicative only. We operate a policy of continuous product development and features may, therefore, vary from time to time. This information does not constitute a contract, part of a contract or warranty. They are not intended to be used for carpet sizes, appliance sizes or items of furniture.

SHARED OWNERSHIP

PLOT 127

TWO BEDROOM APARTMENT



DIMENSIONS

TOTAL AREA: 62.1 SQ M 668 SQ FT

	Length	Width	Length	Width
LIVING / DINING / KITCHEN	7.19m x 3.46m		23' 7" x 11' 4"	
BEDROOM 1	3.92m x 2.78m		12' 10" x 9' 1"	
BEDROOM 2	3.83m x 2.19m		12' 6" x 7' 2"	

KEY:

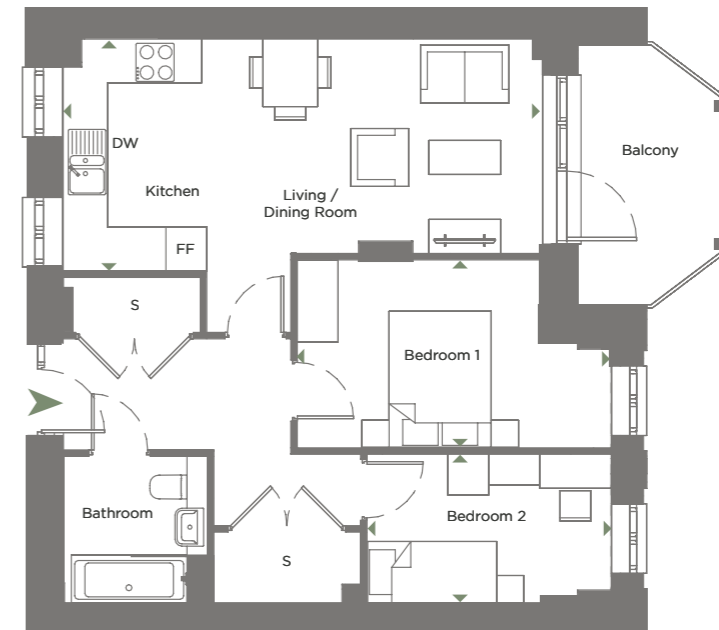
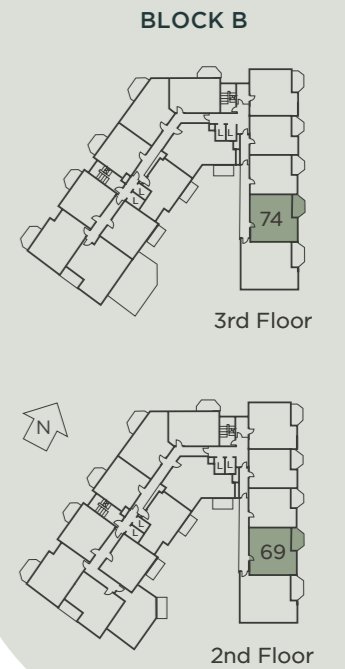
- FF Fridge Freezer
- WM Washing machine
- DW Dishwasher
- S Store

Point from which maximum dimensions are measured. Dimensions are intended for guidance only. The developer reserves the right to vary as necessary to complete works. All measurements and areas may vary by approximately 5%. External space is indicative only. We operate a policy of continuous product development and features may, therefore, vary from time to time. This information does not constitute a contract, part of a contract or warranty. They are not intended to be used for carpet sizes, appliance sizes or items of furniture.

SHARED OWNERSHIP

PLOT 69, 74

TWO BEDROOM APARTMENT



DIMENSIONS

TOTAL AREA: 62.2 SQ M 669 SQ FT

	Length	Width	Length	Width
LIVING / DINING / KITCHEN	7.10m x 3.46m		23' 3" x 11' 4"	
BEDROOM 1	3.68m x 2.79m		12' 0" x 9' 1"	
BEDROOM 2	3.63m x 2.13m		11' 10" x 6' 11"	

KEY:

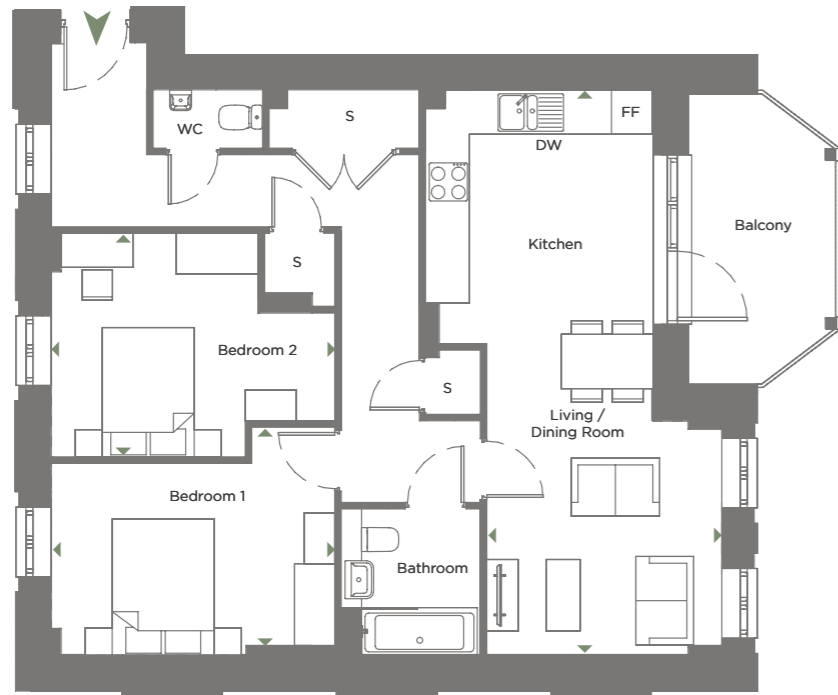
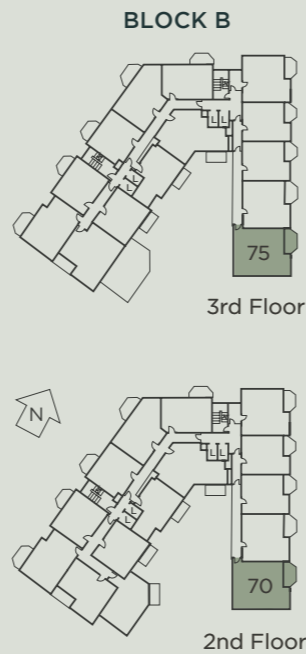
- FF Fridge Freezer
- WM Washing machine
- DW Dishwasher
- S Store

Point from which maximum dimensions are measured. Dimensions are intended for guidance only. The developer reserves the right to vary as necessary to complete works. All measurements and areas may vary by approximately 5%. External space is indicative only. We operate a policy of continuous product development and features may, therefore, vary from time to time. This information does not constitute a contract, part of a contract or warranty. They are not intended to be used for carpet sizes, appliance sizes or items of furniture.

SHARED OWNERSHIP

PLOT 70, 75

TWO BEDROOM APARTMENT



DIMENSIONS

TOTAL AREA: 62.2 SQ M 669 SQ FT

	Length	Width	Length	Width
LIVING / DINING / KITCHEN	8.36m x 3.50m		6' 11" x 11' 5"	
BEDROOM 1	4.21m x 3.85m		13' 9" x 12' 7"	
BEDROOM 2	4.03m x 3.43m		13' 2" x 11' 3"	

KEY:

- FF Fridge Freezer
- WM Washing machine
- DW Dishwasher
- S Store

Point from which maximum dimensions are measured. Dimensions are intended for guidance only. The developer reserves the right to vary as necessary to complete works. All measurements and areas may vary by approximately 5%. External space is indicative only. We operate a policy of continuous product development and features may, therefore, vary from time to time. This information does not constitute a contract, part of a contract or warranty. They are not intended to be used for carpet sizes, appliance sizes or items of furniture.

SHARED OWNERSHIP

PLOTS 26, 35, 44

TWO BEDROOM APARTMENT



DIMENSIONS

TOTAL AREA: 62.6 SQ M 674 SQ FT

	Length	Width	Length	Width
LIVING / DINING / KITCHEN	6.85m x 3.68m		22' 5" x 12' 0"	
BEDROOM 1	3.60m x 3.44m		11' 9" x 11' 3"	
BEDROOM 2	3.69m x 2.24m		12' 1" x 7' 4"	

KEY:

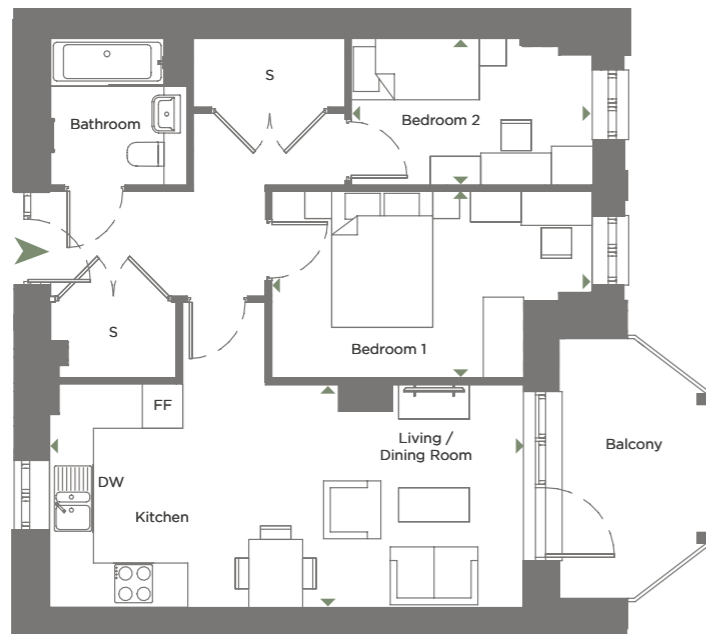
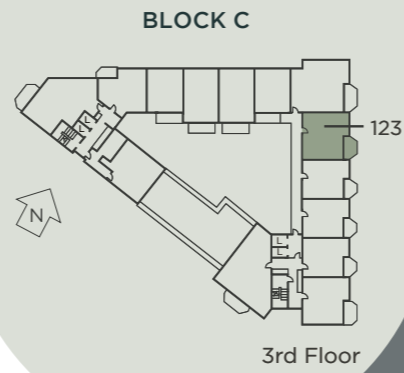
- FF Fridge Freezer
- WM Washing machine
- DW Dishwasher
- S Store

Point from which maximum dimensions are measured. Dimensions are intended for guidance only. The developer reserves the right to vary as necessary to complete works. All measurements and areas may vary by approximately 5%. External space is indicative only. We operate a policy of continuous product development and features may, therefore, vary from time to time. This information does not constitute a contract, part of a contract or warranty. They are not intended to be used for carpet sizes, appliance sizes or items of furniture.

SHARED OWNERSHIP

PLOT 123

TWO BEDROOM APARTMENT



DIMENSIONS

TOTAL AREA: 62.7 SQ M 675 SQ FT

	Length	Width	Length	Width
LIVING / DINING / KITCHEN	7.10m x 3.31m		23' 3" x 10' 10"	
BEDROOM 1	3.78m x 2.78m		12' 4" x 9' 1"	
BEDROOM 2	3.61m x 2.19m		11' 10" x 7' 2"	

KEY:

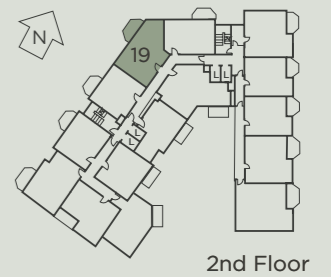
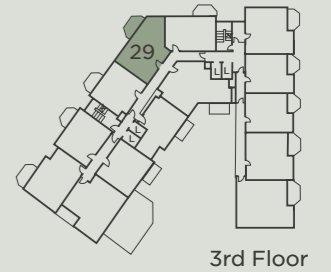
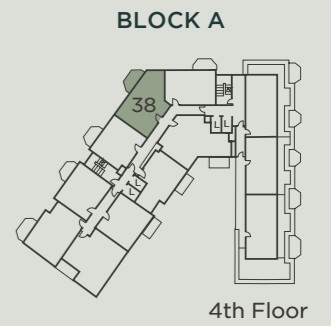
- FF Fridge Freezer
- WM Washing machine
- DW Dishwasher
- S Store

Point from which maximum dimensions are measured. Dimensions are intended for guidance only. The developer reserves the right to vary as necessary to complete works. All measurements and areas may vary by approximately 5%. External space is indicative only. We operate a policy of continuous product development and features may, therefore, vary from time to time. This information does not constitute a contract, part of a contract or warranty. They are not intended to be used for carpet sizes, appliance sizes or items of furniture.

SHARED OWNERSHIP

PLOTS 19, 29, 38

TWO BEDROOM APARTMENT



DIMENSIONS

TOTAL AREA: 63.0 SQ M 678 SQ FT

	Length	Width	Length	Width
LIVING / DINING / KITCHEN	5.77m x 4.59m		18' 11" x 15' 1"	
BEDROOM 1	4.67m x 2.80m		15' 3" x 9' 2"	
BEDROOM 2	3.36m x 2.34m		11' 0" x 7' 8"	

KEY:

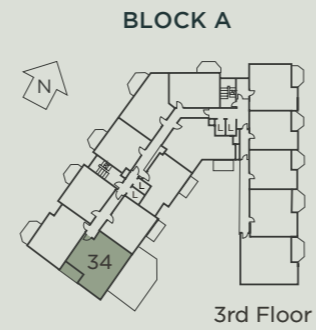
- FF Fridge Freezer
- WM Washing machine
- DW Dishwasher
- S Store

Point from which maximum dimensions are measured. Dimensions are intended for guidance only. The developer reserves the right to vary as necessary to complete works. All measurements and areas may vary by approximately 5%. External space is indicative only. We operate a policy of continuous product development and features may, therefore, vary from time to time. This information does not constitute a contract, part of a contract or warranty. They are not intended to be used for carpet sizes, appliance sizes or items of furniture.

SHARED OWNERSHIP

PLOT 34

TWO BEDROOM APARTMENT



DIMENSIONS TOTAL AREA: 73.8 SQ M 794 SQ FT

	Length	Width	Length	Width
LIVING / DINING / KITCHEN	9.01m	3.92m	29' 6"	12' 10"
BEDROOM 1	4.54m	2.79m	14' 10"	9' 1"
BEDROOM 2	4.54m	2.79m	14' 10"	9' 1"

KEY:

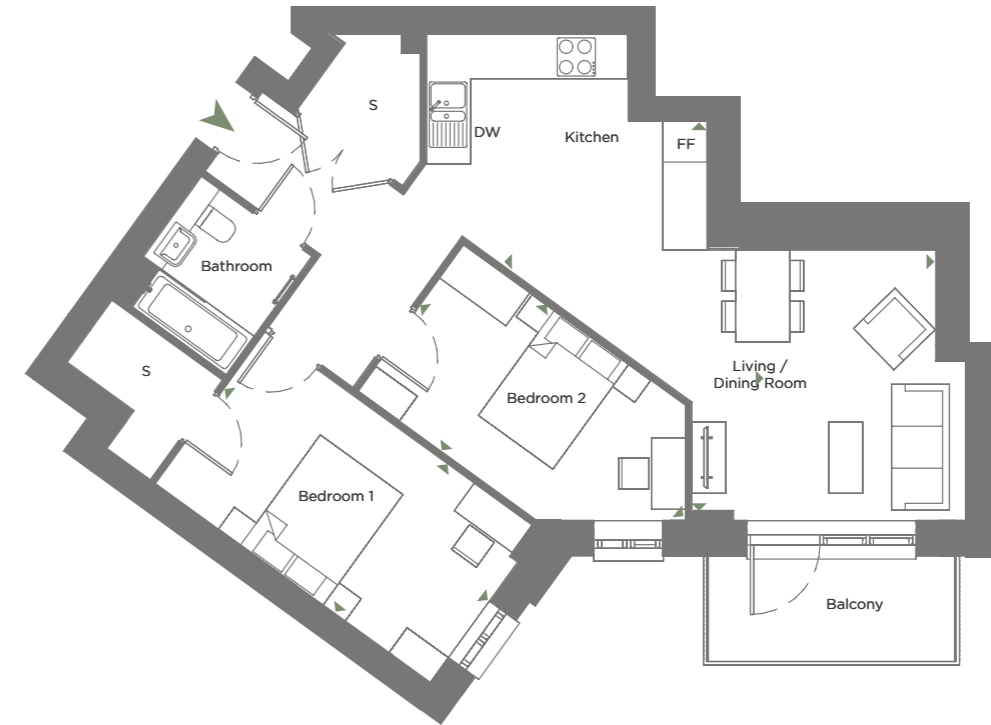
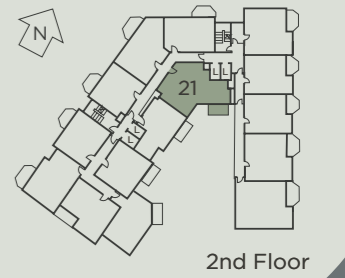
FF	Fridge Freezer
WM	Washing machine
DW	Dishwasher
S	Store

Point from which maximum dimensions are measured. Dimensions are intended for guidance only. The developer reserves the right to vary as necessary to complete works. All measurements and areas may vary by approximately 5%. External space is indicative only. We operate a policy of continuous product development and features may, therefore, vary from time to time. This information does not constitute a contract, part of a contract or warranty. They are not intended to be used for carpet sizes, appliance sizes or items of furniture.

SHARED OWNERSHIP

PLOTS 21, 31

TWO BEDROOM APARTMENT



DIMENSIONS TOTAL AREA: 74.7 SQ M 804 SQ FT

	Length	Width	Length	Width
KITCHEN	4.17m	2.30m	13' 8"	7' 7"
LIVING / DINING	4.07m	4.03m	13' 4"	13' 0"
BEDROOM 1	5.03m	2.79m	16' 6"	9' 1"
BEDROOM 2	3.41m	2.68m	11' 2"	8' 9"

KEY:

FF	Fridge Freezer
WM	Washing machine
DW	Dishwasher
S	Store

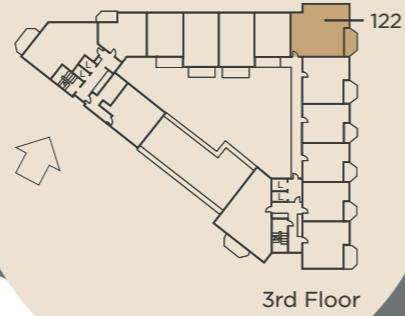
Point from which maximum dimensions are measured. Dimensions are intended for guidance only. The developer reserves the right to vary as necessary to complete works. All measurements and areas may vary by approximately 5%. External space is indicative only. We operate a policy of continuous product development and features may, therefore, vary from time to time. This information does not constitute a contract, part of a contract or warranty. They are not intended to be used for carpet sizes, appliance sizes or items of furniture.

SHARED OWNERSHIP

PLOT 122

THREE BEDROOM APARTMENT

BLOCK C



DIMENSIONS

TOTAL AREA: 84.2 SQ M 906 SQ FT

	Length	Width	Length	Width
LIVING / DINING / KITCHEN	5.60m	x 5.28m	18' 4"	x 17' 3"
BEDROOM 1	3.82m	x 3.24m	12' 6"	x 10' 7"
BEDROOM 2	3.03m	x 2.63m	9' 11"	x 8' 7"
BEDROOM 3	3.29m	x 2.46m	10' 9"	x 8' 0"

KEY:

- FF Fridge Freezer
- WM Washing machine
- DW Dishwasher
- S Store

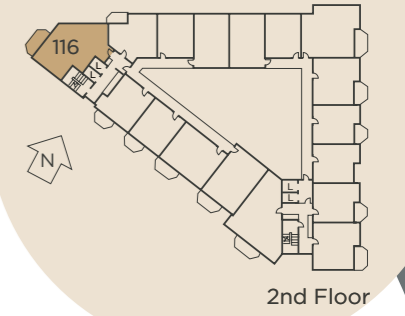
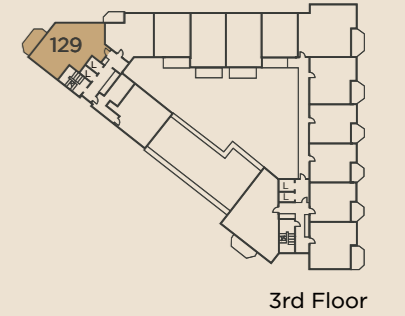
Point from which maximum dimensions are measured. Dimensions are intended for guidance only. The developer reserves the right to vary as necessary to complete works. All measurements and areas may vary by approximately 5%. External space is indicative only. We operate a policy of continuous product development and features may, therefore, vary from time to time. This information does not constitute a contract, part of a contract or warranty. They are not intended to be used for carpet sizes, appliance sizes or items of furniture.

SHARED OWNERSHIP

PLOTS 116, 129

THREE BEDROOM APARTMENT

BLOCK C



DIMENSIONS

TOTAL AREA: 88.7 SQ M 954 SQ FT

	Length	Width	Length	Width
LIVING / DINING / KITCHEN	5.37m	x 4.93m	17' 7"	x 16' 2"
BEDROOM 1	5.37m	x 2.68m	17' 7"	x 8' 10"
BEDROOM 2	3.38m	x 3.34m	11' 1"	x 10' 11"
BEDROOM 3	3.34m	x 2.69m	10' 11"	x 8' 9"

KEY:

- FF Fridge Freezer
- WM Washing machine
- DW Dishwasher
- S Store

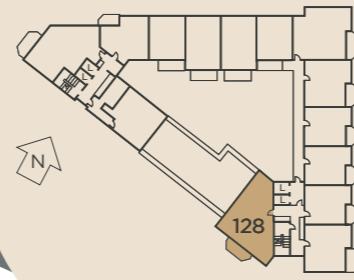
Point from which maximum dimensions are measured. Dimensions are intended for guidance only. The developer reserves the right to vary as necessary to complete works. All measurements and areas may vary by approximately 5%. External space is indicative only. We operate a policy of continuous product development and features may, therefore, vary from time to time. This information does not constitute a contract, part of a contract or warranty. They are not intended to be used for carpet sizes, appliance sizes or items of furniture.

SHARED OWNERSHIP

PLOT 128

THREE BEDROOM APARTMENT

BLOCK C



UNDERSTANDING *Shared Ownership*



Shared Ownership is a way of making home ownership possible for more people. You buy a share of your home, with a lower deposit, smaller mortgage and monthly payment on the rest.

Hammersmith & Fulham Council redefines Shared Ownership by keeping everything simple and transparent, helping you understand each stage clearly before and after you buy. We believe lasting relationships are built on honesty and openness, so we aim to make sure our communication is as clear, straightforward, and jargon-free as possible. From your first enquiry to moving in your new home, we're here to provide guidance and support you can trust, ensuring you feel informed and confident every step of the way.

The council is committed to delivering high-quality Shared Ownership homes, with a focus on affordability, community-driven development, and long-term sustainability. Through strong governance, inclusive housing strategies, and a dedication to well-designed, energy-efficient properties, the council aims to support residents in achieving secure, affordable homeownership.

DIMENSIONS TOTAL AREA: 95.9 SQ M 1032 SQ FT

	Length	Width	Length	Width
LIVING / DINING / KITCHEN	6.02m	5.13m	19' 9"	16' 9"
BEDROOM 1	3.99m	3.84m	13' 1"	12' 7"
BEDROOM 2	4.07m	3.38m	13' 4"	11' 1"
BEDROOM 3	4.89m	2.49m	16' 0"	8' 2"

KEY:

FF	Fridge Freezer
WM	Washing machine
DW	Dishwasher
S	Store

Point from which maximum dimensions are measured. Dimensions are intended for guidance only. The developer reserves the right to vary as necessary to complete works. All measurements and areas may vary by approximately 5%. External space is indicative only. We operate a policy of continuous product development and features may, therefore, vary from time to time. This information does not constitute a contract, part of a contract or warranty. They are not intended to be used for carpet sizes, appliance sizes or items of furniture.

H&F UPSTREAM HOMES: LIVING, WORKING AND THRIVING TOGETHER

Hammersmith & Fulham occupies a unique position in the capital: upstream of the city's traditional centres, our ideas and achievements flow through to influence the rest of London. This applies to our industrial strategy, but also to our best-in-class housing offer.

We have one of the best economic growth rates in the country, driven by major investment from tech and life sciences through our industrial strategy, Upstream London, which has brought with it thousands of cutting-edge new jobs. As we all continue to benefit from this industrial revolution, we're on a mission to build the best possible housing for our residents to live, work and thrive in.

That's why Hammersmith & Fulham council is committed to providing high quality, low energy homes for those who live and work here. Our goal is to help you achieve your housing aspirations, and make living, working and putting down roots in Hammersmith & Fulham affordable.

We put our people at the heart of our offer. Our commitment to our residents flows through everything we do. That's why at least 50% of our new developments are affordable. And that's why we plan to minimise household bills by building more environmentally friendly homes per km² than any other local authority.

We work with residents to ensure that our developments reflect what you and your community need and manage our properties directly. That means we are efficient and effective in what we deliver. We are a not-for-profit organisation with a direct stake in the development and are here to support the tenants in our community and understanding their needs.

**Our offer is simple:
Housing in H&F, by H&F, for H&F.**



iStock™
Credit: milorad kravic

Fulham Quarter
Dawes Road,
London SW6 7RQ

0208 502 5758 | fulhamquarter@regenta.co.uk
regenta.co.uk/development/fulham-quarter

