

SHARED OWNERSHIP AT
**NORTHWICK
PARKSIDE**

COBALT PLACE

BLOCK C4

**1 & 2 BEDROOM
SHARED OWNERSHIP
APARTMENTS**

WELCOME TO



COBALT PLACE

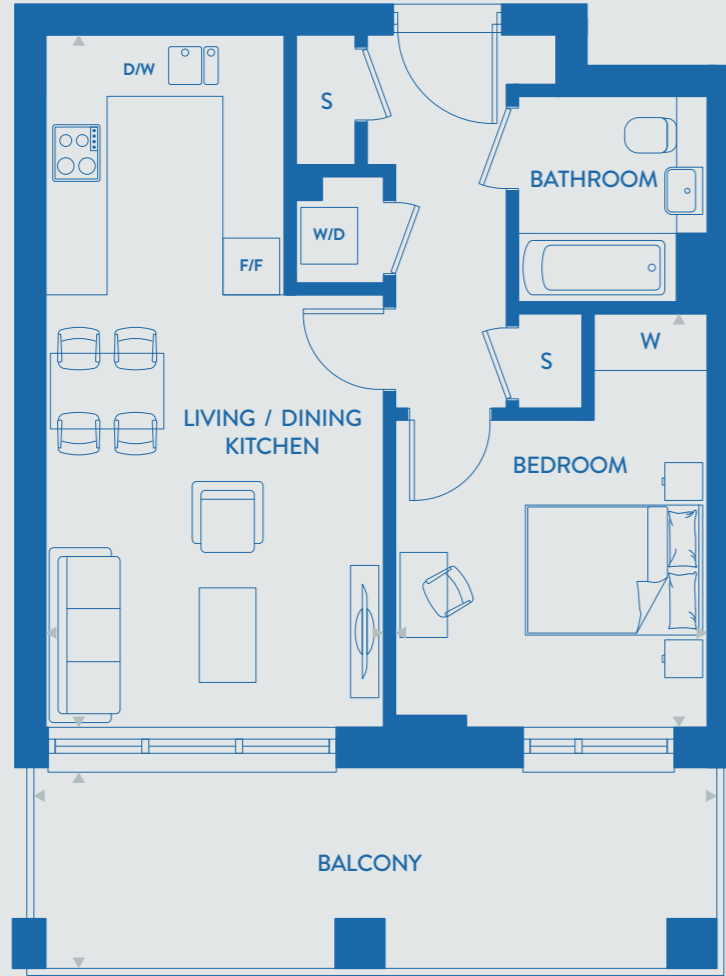
Cobalt Place, offering 1 & 2 bedroom Shared Ownership apartments, is the first phase of Northwick Parkside, delivered in partnership between Sovereign Network Group and Countryside Homes. Designed for modern living, surrounded by green open spaces and a growing community with excellent transport links, it's a place to settle in, stand out, and feel at home.

SITE MAP



1 BEDROOM SHARED OWNERSHIP APARTMENTS

PLOT NUMBERS | C4-A-0-3 | C4-A-1-5 | C4-A-2-5
C4-A-3-5 | C4-A-4-5 | C4-A-5-5 | C4-A-6-5 | C4-A-7-5



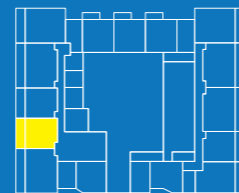
1 BEDROOM SHARED OWNERSHIP APARTMENTS

PLOT NUMBERS | C4-A-0-4 | C4-A-1-6 | C4-A-2-6
C4-A-3-6 | C4-A-4-6 | C4-A-5-6 | C4-A-6-1 | C4-A-7-1



TOTAL GROSS AREA	50.4 M ²	543 FT ²
LIVING / DINING / KITCHEN	7.34m x 3.62m	24'1" x 11'11"
BEDROOM	4.39m x 3.29m	14'5" x 10'10"
PATIO (GROUND FLOOR)	1.92m x 7.03m	6'4" x 23'1"
BALCONY (LEVELS 1-7)	1.94m x 7.26m	6'4" x 23'10"

APARTMENT LOCATOR



GROUND - 7TH FLOOR

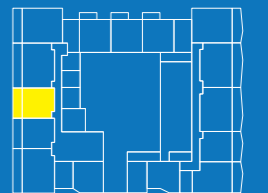
KEY

◀▶ Measurement Points | F/F Fridge Freezer | W/D Washer / Dryer | D/W Dishwasher | S Storage | S/U Storage / Utility cupboard

Floorplans are not to scale and are indicative only. Location of windows, doors, bathroom fittings, kitchen units and appliances may differ. Dimensions given are approximate and should not be used to order carpets or furniture. Balcony or terrace sizes and locations may differ from those illustrated.

TOTAL GROSS AREA	50.0 M ²	538 FT ²
LIVING / DINING / KITCHEN	7.34m x 3.62m	24'1" x 11'11"
BEDROOM	4.39m x 3.29m	14'5" x 10'10"
PATIO (GROUND FLOOR)	1.92m x 7.24m	6'4" x 23'9"
BALCONY (LEVELS 1-7)	1.94m x 7.37m	6'4" x 24'2"

APARTMENT LOCATOR



GROUND - 7TH FLOOR

KEY

◀▶ Measurement Points | F/F Fridge Freezer | W/D Washer / Dryer | D/W Dishwasher | S Storage | S/U Storage / Utility cupboard

Floorplans are not to scale and are indicative only. Location of windows, doors, bathroom fittings, kitchen units and appliances may differ. Dimensions given are approximate and should not be used to order carpets or furniture. Balcony or terrace sizes and locations may differ from those illustrated.

2 BEDROOM SHARED OWNERSHIP APARTMENTS

PLOT NUMBERS | C4-A-1-3 | C4-A-2-3 | C4-A-3-3
C4-A-4-3 | C4-A-5-3 | C4-A-6-3 | C4-A-7-3



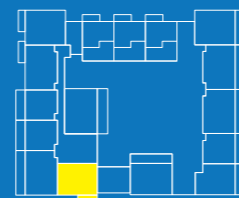
2 BEDROOM SHARED OWNERSHIP APARTMENTS

PLOT NUMBERS | C4-A-0-2 | C4-A-1-4 | C4-A-2-4
C4-A-3-4 | C4-A-4-4 | C4-A-5-4 | C4-A-6-4 | C4-A-7-4



TOTAL GROSS AREA	61.3 M ²	660 FT ²
LIVING / DINING / KITCHEN	3.53m x 7.13m	117" x 23'5"
BEDROOM 1	3.25m x 3.74m	10'8" x 12'3"
BEDROOM 2	2.15m x 3.74m	7'1" x 12'3"
PATIO (LEVEL 1)	3.61m x 6.24m	11'10" x 20'6"
BALCONY (LEVELS 1-7)	4.74m x 1.58m	15'6" x 5'2"

APARTMENT LOCATOR



1ST FLOOR - 7TH FLOOR

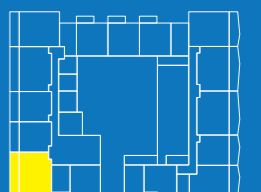
KEY

◀▶ Measurement Points | F/F Fridge Freezer | W/D Washer / Dryer | D/W Dishwasher | S Storage | S/U Storage / Utility cupboard

Floorplans are not to scale and are indicative only. Location of windows, doors, bathroom fittings, kitchen units and appliances may differ. Dimensions given are approximate and should not be used to order carpets or furniture. Balcony or terrace sizes and locations may differ from those illustrated.

TOTAL GROSS AREA	73.7 M ²	793 FT ²
LIVING / DINING / KITCHEN	7.34m x 4.04m	24'1" x 13'3"
BEDROOM 1	3.90m x 3.61m	12'10" x 11'10"
BEDROOM 2	3.72m x 2.40m	12'2" x 7'10"
PATIO (GROUND FLOOR)	1.92 m x 10.89 m	6'4" x 35'9"
BALCONY (LEVELS 1-7)	1.94 m x 10.62 m	6'4" x 34'10"

APARTMENT LOCATOR



GROUND - 7TH FLOOR

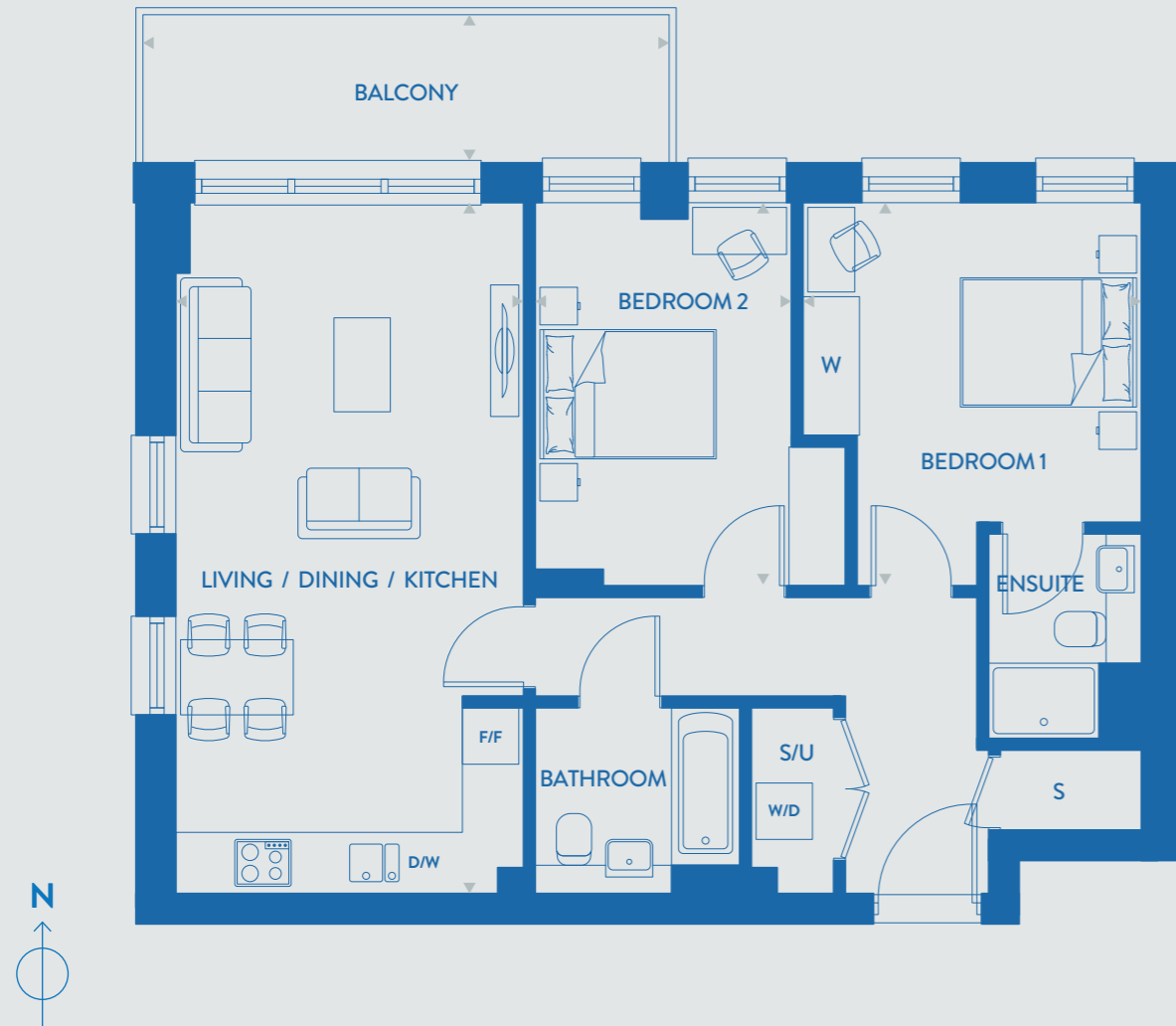
KEY

◀▶ Measurement Points | F/F Fridge Freezer | W/D Washer / Dryer | D/W Dishwasher | S Storage | S/U Storage / Utility cupboard

Floorplans are not to scale and are indicative only. Location of windows, doors, bathroom fittings, kitchen units and appliances may differ. Dimensions given are approximate and should not be used to order carpets or furniture. Balcony or terrace sizes and locations may differ from those illustrated.

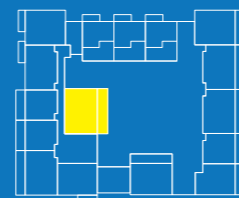
2 BEDROOM SHARED OWNERSHIP APARTMENTS

PLOT NUMBERS | C4-A-1-2 | C4-A-2-2 | C4-A-3-2
C4-A-4-2 | C4-A-5-2 | C4-A-6-2 | C4-A-7-2



TOTAL GROSS AREA	73.6 M ²	792 FT ²
LIVING/DINING/KITCHEN	7.32m x 3.72m	24'0" x 12'2"
BEDROOM 1	4.07m x 3.58m	13'4" x 11'9"
BEDROOM 2	4.07m x 3.35m	13'4" x 11'0"
PATIO (LEVEL 1)	2.01m x 10.92m	6'7" x 35'10"
BALCONY (LEVELS 2-7)	1.58m x 5.64m	5'2" x 18'6"

APARTMENT LOCATOR



1ST FLOOR - 7TH FLOOR

KEY

◀▶ Measurement Points | F/F Fridge Freezer | W/D Washer / Dryer | D/W Dishwasher | S Storage | S/U Storage / Utility cupboard

Floorplans are not to scale and are indicative only. Location of windows, doors, bathroom fittings, kitchen units and appliances may differ. Dimensions given are approximate and should not be used to order carpets or furniture. Balcony or terrace sizes and locations may differ from those illustrated.

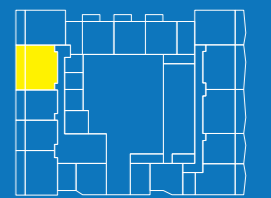
2 BEDROOM SHARED OWNERSHIP APARTMENTS

PLOT NUMBERS | C4-A-0-5 | C4-A-1-7 | C4-A-2-7
C4-A-3-7 | C4-A-4-7 | C4-A-5-7



TOTAL GROSS AREA	74.7 M ²	804 FT ²
LIVING / DINING / KITCHEN	7.34m x 3.90m	24'1" x 12'10"
BEDROOM 1	4.09m x 3.68m	13'5" x 12'1"
BEDROOM 2	4.09m x 3.35m	13'5" x 11'0"
PATIO (GROUND FLOOR)	1.92m x 10.78m	6'4" x 35'4"
BALCONY (LEVELS 1-5)	1.58m x 4.74m	5'2" x 15'6"

APARTMENT LOCATOR



GROUND - 5TH FLOOR

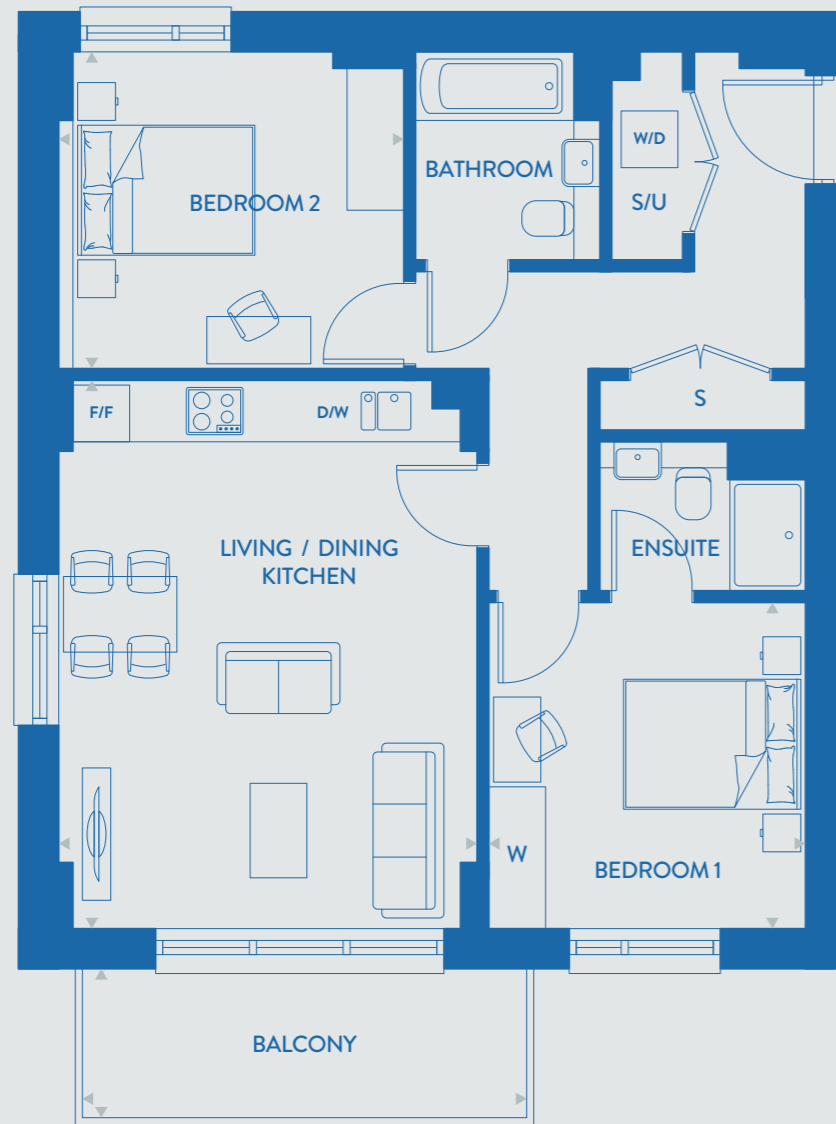
KEY

◀▶ Measurement Points | F/F Fridge Freezer | W/D Washer / Dryer | D/W Dishwasher | S Storage | S/U Storage / Utility cupboard

Floorplans are not to scale and are indicative only. Location of windows, doors, bathroom fittings, kitchen units and appliances may differ. Dimensions given are approximate and should not be used to order carpets or furniture. Balcony or terrace sizes and locations may differ from those illustrated.

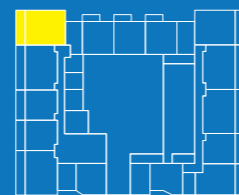
2 BEDROOM SHARED OWNERSHIP APARTMENTS

PLOT NUMBERS | C4-A-0-1 | C4-A-1-1 | C4-A-2-1
C4-A-3-1 | C4-A-4-1 | C4-A-5-1



TOTAL GROSS AREA	72.4 M ²	779 FT ²
LIVING / DINING / KITCHEN	5.80m x 4.45m	19'1" x 14'7"
BEDROOM 1	3.45m x 3.37m	11'4" x 11'0"
BEDROOM 2	3.35m x 3.66m	11'0" x 12'0"
PATIO (GROUND FLOOR)	1.92m x 8.27m	6'4" x 27'2"
BALCONY (LEVELS 1-5)	1.58m x 4.74m	5'2" x 15'6"

APARTMENT LOCATOR



GROUND - 5TH FLOOR

KEY

◀▶ Measurement Points | F/F Fridge Freezer | W/D Washer / Dryer | D/W Dishwasher | S Storage | S/U Storage / Utility cupboard

Floorplans are not to scale and are indicative only. Location of windows, doors, bathroom fittings, kitchen units and appliances may differ. Dimensions given are approximate and should not be used to order carpets or furniture. Balcony or terrace sizes and locations may differ from those illustrated.

WORKING IN PARTNERSHIP



A Partnership with purpose

Northwick Parkside is being brought to life through a joint venture between SNG and Countryside Partnerships (part of Vistry Group); a landmark regeneration scheme in Brent.

As SNG's largest project to date, the scheme tackles the local housing shortage while setting a benchmark for council-led placemaking. Together, the partners are creating a vibrant, inclusive neighbourhood with 654 new homes,

of which, over 50% are affordable. Supported by the Mayor of London's Affordable Homes Programme, these homes are offered across Social Rent, London Living Rent, Intermediate Rent, and Shared Ownership.

By working together on this large-scale site, the partnership will deliver a broader mix of homes to a wider range of buyers, and ensure that every detail, from design to delivery, is shaped with residents in mind.



All computer generated images (CGIs) used in these particulars are for illustrative purposes only, are not intended to provide an actual forecast or impression of the measurements, dimensions, layouts, placements, context and/or finishes of the buildings premises or landscaping within the development, and should not be relied upon as true or accurate. These brief particulars have been prepared and are intended as a guide to supplement an inspection or survey and do not form part of any offer or contract. Their accuracy is not guaranteed. They contain statement of opinion and in some instances we have relied upon information supplied by others. This brochure includes imagery for illustrative purposes only. The map is not to scale. Design elements and specification details may change without notice. You should verify the particulars on your visit to the site and with the sales agent. The particulars do not obviate the need for a survey and all the appropriate enquiries. Accordingly, there shall be no liability as a result of any effort or omission in the particulars or information given. All information believed to be correct at time of print. Travel times are approximate only and are subject to change. Shared Ownership T&C's apply. See sales.sng.org.uk for details. Sovereign Network Group is charitable. October 2025. Designed and produced by Four Agency Worldwide.

WORKING IN PARTNERSHIP

