

life in place
FROM ANCHOR



MILL PLACE

SUTTON COLDFIELD

FLOOR PLANS



Discover Mill Place in Sutton Coldfield

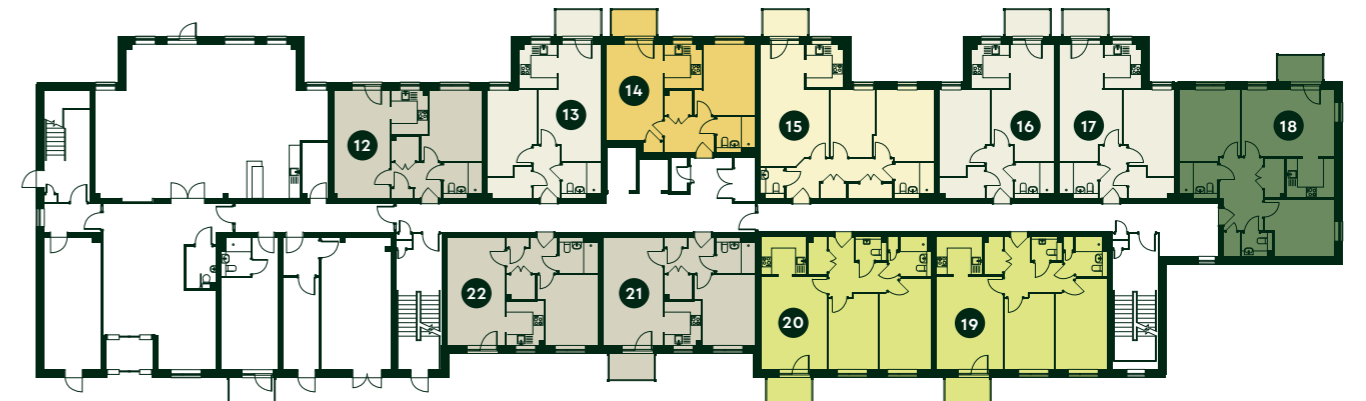
Find a welcoming and low-maintenance lifestyle in a secure and supportive environment.

Set in the heart of the Royal Town of Sutton Coldfield, Mill Place offers everything you need to enjoy life at your own pace: a vibrant town centre, expansive countryside within easy reach and activities to fill your days.



Lower Ground Floor Apartments

Upper Ground Floor Apartments



KEY:

- ① APARTMENT NUMBER
- THE POWELL
- THE WYNDLEY
- THE LONGMOOR
- THE BLACKROOT
- THE BRACEBRIDGE
- THE KEEPER'S



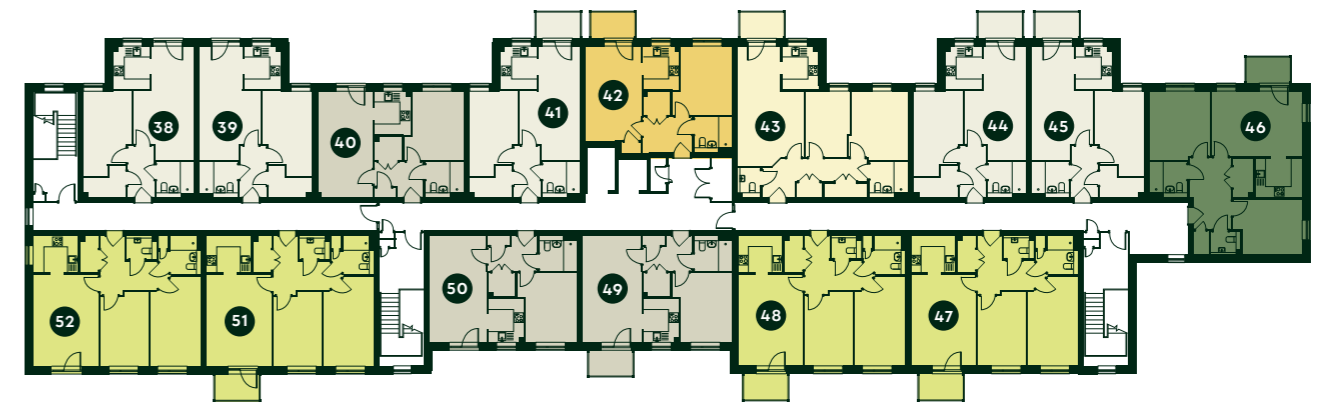
KEY:

- ① APARTMENT NUMBER
- THE POWELL
- THE WYNDLEY
- THE LONGMOOR
- THE BLACKROOT
- THE BRACEBRIDGE
- THE KEEPER'S



First Floor Apartments

Second Floor Apartments



KEY:

- ① APARTMENT NUMBER
- THE POWELL
- THE WYNDLEY
- THE LONGMOOR
- THE BLACKROOT
- THE BRACEBRIDGE
- THE KEEPER'S



KEY:

- ① APARTMENT NUMBER
- THE POWELL
- THE WYNDLEY
- THE LONGMOOR
- THE BLACKROOT
- THE BRACEBRIDGE
- THE KEEPER'S



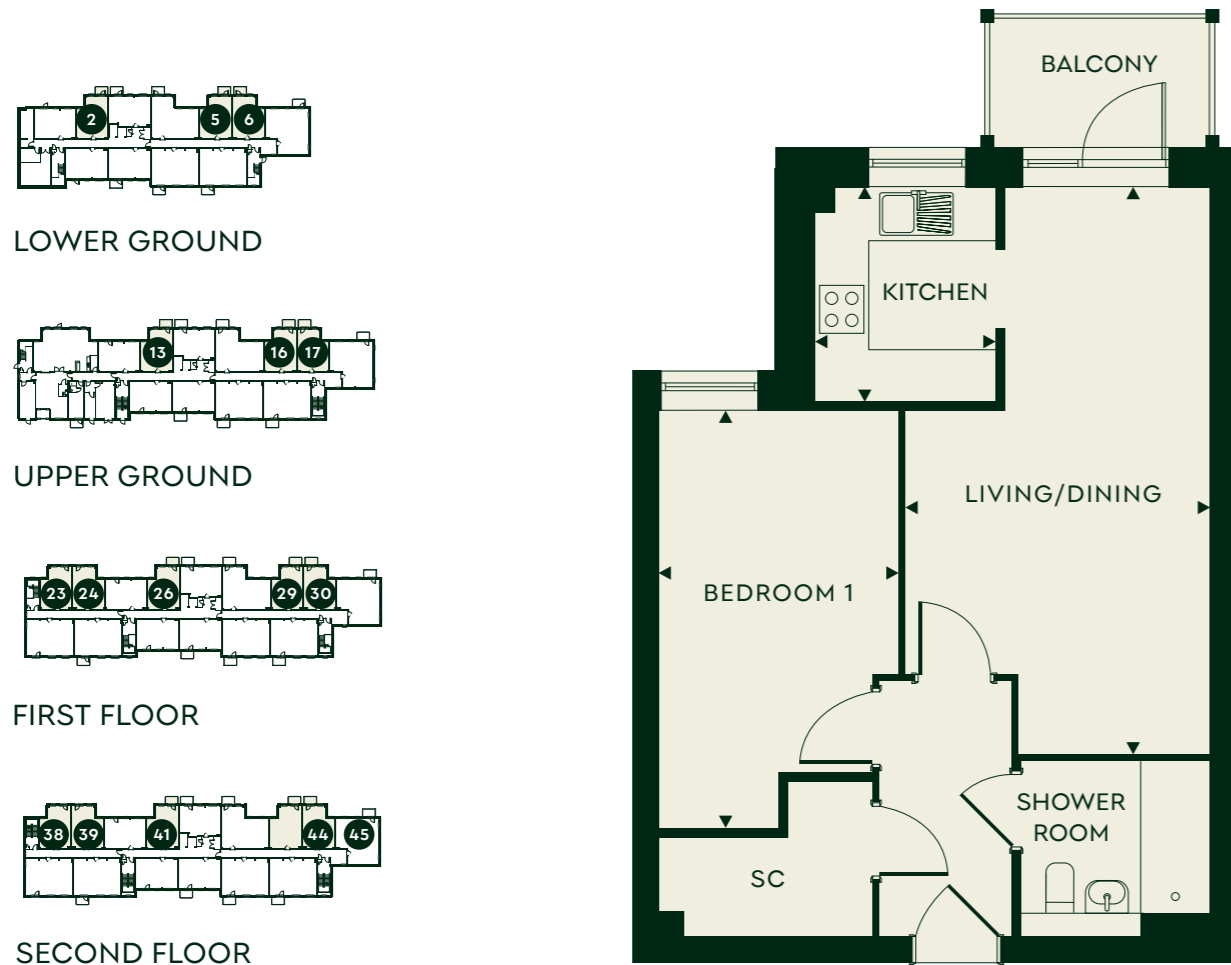
The Powell

LOWER FLOOR TO SECOND FLOOR

PLOTS: 2, 5, 6, 13, 16, 17, 23*, 24*, 26, 29, 30, 38*, 39*, 41, 44, 45

KEY:

- LOCATOR
- SC STORE CUPBOARD



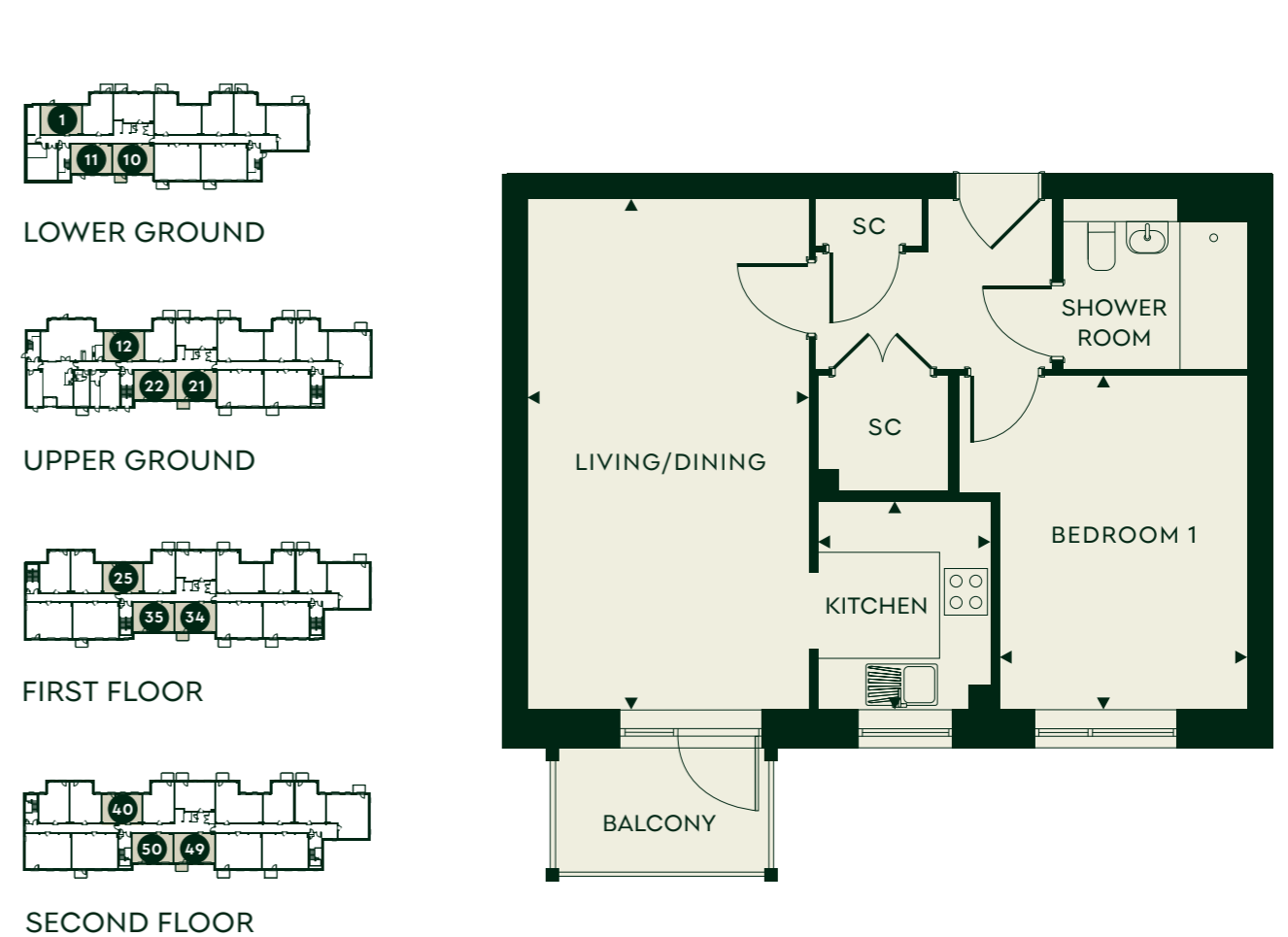
The Wyndley

LOWER FLOOR TO SECOND FLOOR

PLOTS: 1, 10, 11, 12*, 21, 22*, 25*, 34, 35*, 40*, 49, 50*

KEY:

- LOCATOR
- SC STORE CUPBOARD



DIMENSIONS

TOTAL AREA	51.3 SQ M	552 SQ FT
KITCHEN	2.46m x 2.06m	8'1" x 6'9"
LIVING/DINING	6.55m x 3.52m	21'6" x 11'7"
BEDROOM 1	4.83m x 2.84m	15'10" x 9'4"



*Plots have a Juliette balcony.

DIMENSIONS

TOTAL AREA	51.0 SQ M	548 SQ FT
KITCHEN	2.46m x 2.06m	8'1" x 6'9"
LIVING/DINING	6.09m x 3.14m	20'0" x 10'4"
BEDROOM 1	3.97m x 2.93m	13'0" x 9'7"



*Plots have a Juliette balcony.

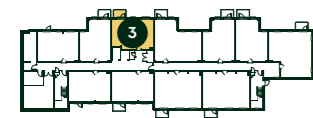
The Longmoor

LOWER FLOOR TO SECOND FLOOR

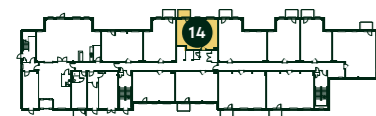
PLOTS: 3, 14, 27, 42

KEY:

- LOCATOR
- SC STORE CUPBOARD



LOWER GROUND



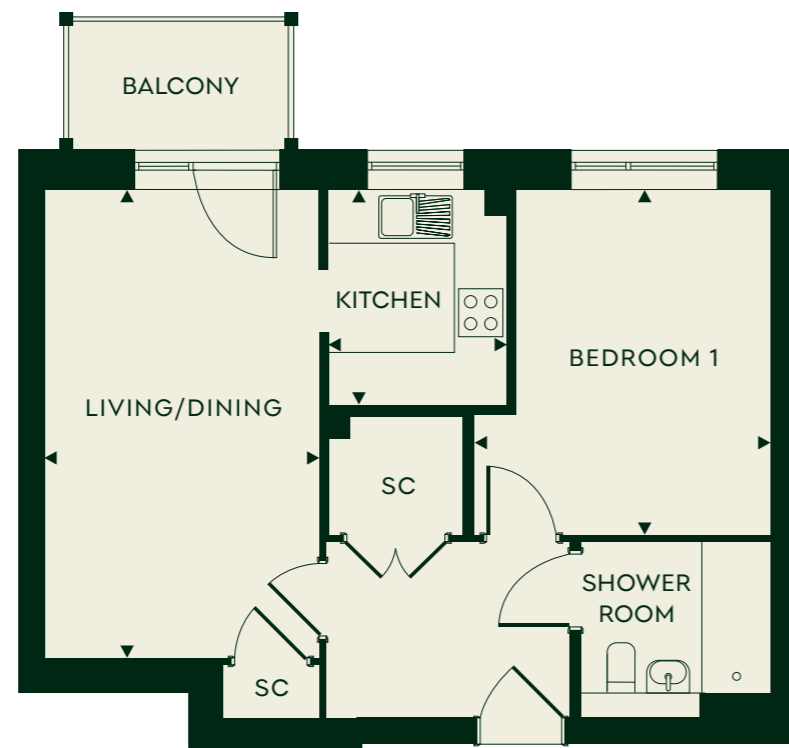
UPPER GROUND



FIRST FLOOR



SECOND FLOOR



The Blackroot

LOWER FLOOR TO SECOND FLOOR

PLOTS: 8, 9, 19, 20, 32, 33, 36, 37*, 47, 48, 51, 52*

KEY:

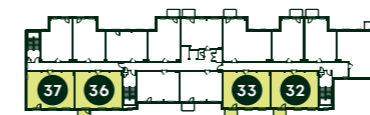
- LOCATOR
- SC STORE CUPBOARD



LOWER GROUND



UPPER GROUND



FIRST FLOOR



SECOND FLOOR



DIMENSIONS

TOTAL AREA	50.0 SQ M	538 SQ FT
KITCHEN	2.46m x 2.06m	8'1" x 6'9"
LIVING/DINING	5.18m x 3.21m	17'0" x 10'6"
BEDROOM 1	3.97m x 2.93m	13'0" x 9'7"



DIMENSIONS

TOTAL AREA	71.4 SQ M	768 SQ FT
KITCHEN	2.55m x 2.08m	8'4" x 6'10"
LIVING/DINING	5.24m x 3.73m	17'2" x 12'3"
BEDROOM 1	5.24m x 2.91m	17'3" x 9'7"
BEDROOM 2	3.99m x 2.77m	13'1" x 9'1"



*Plots have a Juliette balcony.

The Bracebridge

LOWER FLOOR TO SECOND FLOOR

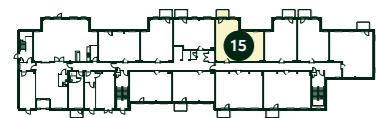
PLOTS: 4, 15, 28, 43

KEY:

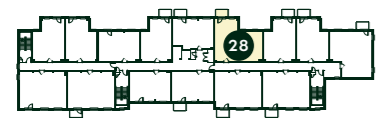
- LOCATOR
- SC STORE CUPBOARD



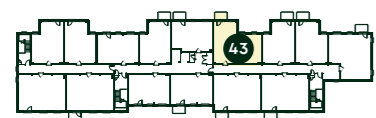
LOWER GROUND



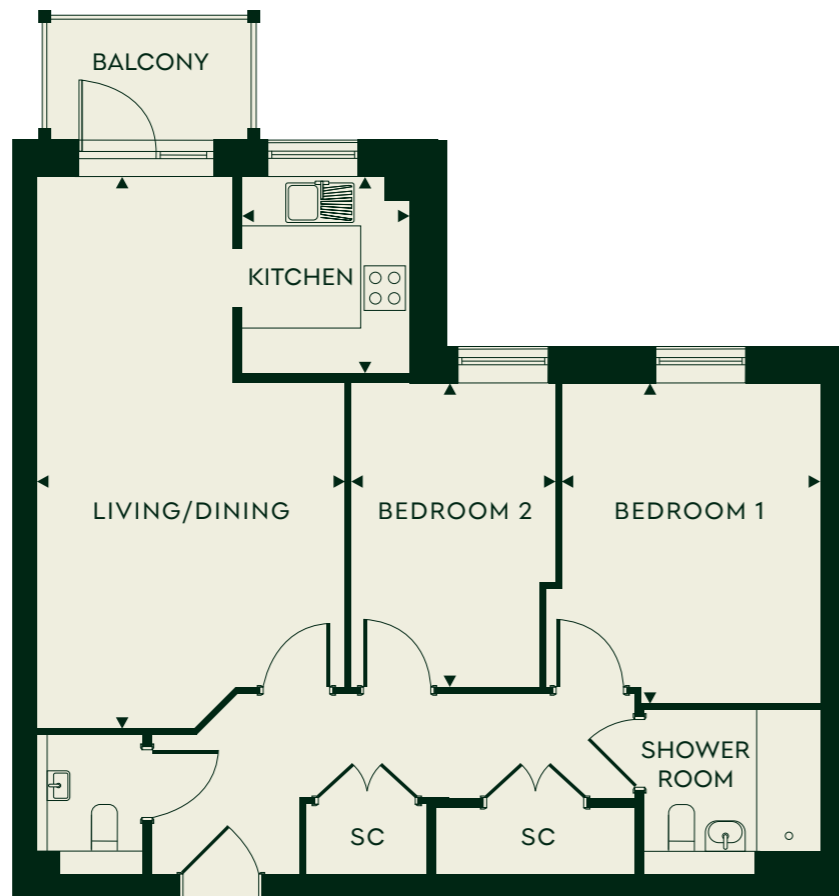
UPPER GROUND



FIRST FLOOR



SECOND FLOOR



The Keeper's

LOWER FLOOR TO SECOND FLOOR

PLOTS: 7, 18, 31, 46

KEY:

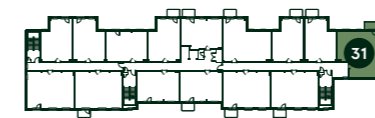
- LOCATOR
- SC STORE CUPBOARD



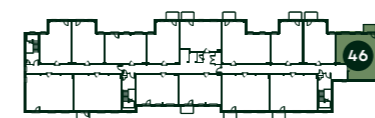
LOWER GROUND



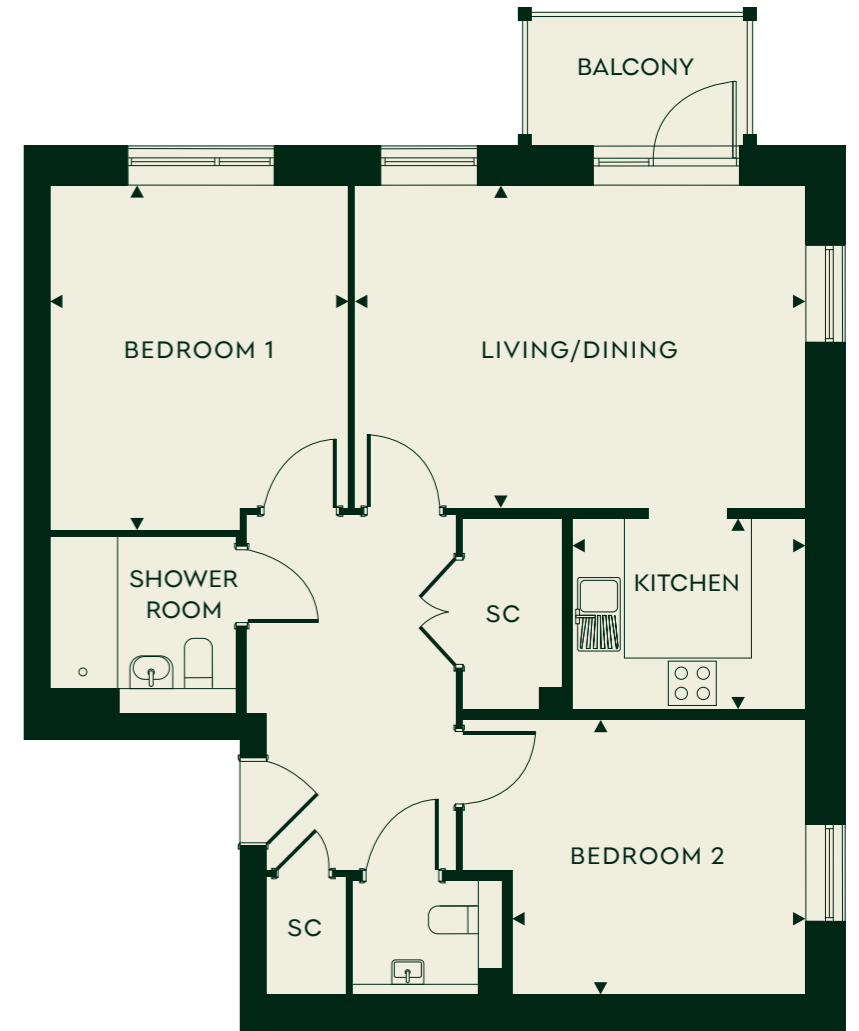
UPPER GROUND



FIRST FLOOR



SECOND FLOOR



DIMENSIONS

TOTAL AREA	71.4 SQ M	768 SQ FT
KITCHEN	2.46m x 2.08m	8'1" x 6'10"
LIVING/DINING	6.96m x 3.82m	22'10" x 12'6"
BEDROOM 1	3.97m x 3.21m	13'0" x 10'6"
BEDROOM 2	3.76m x 2.53m	12'4" x 8'4"



DIMENSIONS

TOTAL AREA	73.5 SQ M	791 SQ FT
KITCHEN	2.67m x 2.23m	8'9" x 7'4"
LIVING/DINING	5.19m x 3.71m	17'0" x 12'2"
BEDROOM 1	3.97m x 3.45m	13'0" x 11'4"
BEDROOM 2	3.94m x 3.16m	12'11" x 10'4"



Site *plan*

CG COMMUNAL GARDENS

UPPER GROUND FLOOR

- B BIN STORE
- MS MOBILITY SCOOTER STORE
- CS CYCLE STORE
- GS GUEST SUITE
- E ENTRANCE
- RL RESIDENTS LOUNGE
- W WELLBEING ROOM
- HB HAIR AND BEAUTY SALON
- C CAFÉ





How to *contact us*

Mill Place,
65 Coleshill Street,
Sutton Coldfield, B72 1SH

01217 564 378
MILLPLACE@LIFEINPLACE.ORG.UK
MILLPLACE.ORG.UK

Anchor Hanover Group is a charitable community benefit society with registered society No 7843.
Registered Provider No. LH4095. Registered office: Anchor Hanover Group, 2 Godwin Street, Bradford, BD1 2ST

DISCLAIMER: This document is intended to provide an indication of the general style of our development and apartment types. Computer generated images are indicative only and do not accurately depict individual plots. Anchor operates a policy of continuous development and individual features such as windows and elevational treatments may vary from time to time. To this end, any drawings, photographs or illustrations shown are non-contractual. All room dimensions shown may vary, they are not intended to be used for carpet sizes, appliances, spaces or items of furniture. All furniture is indicative and not supplied. Whilst every endeavour has been made to provide accurate information in relation to internal and external finishes, the Company reserves the right to change supplier and alter or vary the design and specification at any time for any reason without prior notice. Consequently, these particulars should be treated as general guidance only. Nor do they constitute a contract, part of a contract or a warranty. Travel times and distances are approximate and sourced from Google Maps from Mill Place. All details are correct at the time of going to print. 2026.

life in place
FROM ANCHOR

LIFEINPLACE.ORG.UK