



By Metropolitan Thames Valley



**So Resi is a new way of making home ownership possible for more people. You buy a share of your home, with a lower deposit, smaller mortgage and monthly payment on the rest.**

So Resi redefines shared ownership, by making everything clear and uncomplicated, so you understand how it all works at every stage, before and after you buy. Our So Resi homeowners are important to us and we aim to build strong, lasting relationships by being here to answer your questions in a language that makes sense.

So Resi by Metropolitan Thames Valley is a member of the National Housing Federation and the g15. Together with our peers in the sector, we're addressing the national shortage of affordable housing by building good quality homes where people want to live. We believe everyone should have access to a home and the opportunity to live well.

A collection of 1, 2 & 3 bed homes

# For your way of life

If you're seeking a stylish home in a location that offers the work-life balance you strive for, then look no further than So Resi Frimley.

These beautifully designed 1 and 2 bedroom apartments and 2 and 3 bedroom houses are situated within a landscaped development just moments from the town of Frimley on the Surrey/Hampshire border.

With easy access to excellent transport links, plus great amenities and popular schools nearby, there are so many reasons to make So Resi Frimley your new home.

The area	4
Development overview	8
Connectivity	10
Specification	14
Plans	16





Matt Worswick at The Latymer,  
Trip Advisor



# Perfectly placed

Setting up home in So Resi Frimley gives you the perfect balance – bustling shops and cafes in one direction, green countryside in the other, and oh-so-easy transport links to get you where you need to be, fast.

The small town of Frimley, with a Waitrose and independent shops and cafes, offers all the conveniences you need, while nearby Farnborough has plenty of high street stores.

From Frimley railway station you can reach London Waterloo in just 69 minutes, and there are frequent services to Guildford and Ascot. Junction 4 of the M3 is a few minutes' drive away, connecting you to the south west, the M25 and beyond.



Fine dining on your doorstep at the Michelin starred Latymer, set within the exclusive Pennyhill Park Hotel only an 8 minute drive from So Resi Frimley



1



2



4



3



5



6

# Plenty for you to enjoy

# 18

## Holes of golf to be played at Pine Ridge Golf Club

Winding through a gently undulating pine forest, Pine Ridge is a welcoming club with a course that offers something for golfers of all abilities, plus a 36-bay floodlit driving range.

1. Pine Ridge golf club

# 1

## Michelin Star held by The Latymer

Be be sure to book well in advance for a table at Matt Worswick at The Latymer, set within the exclusive Pennyhill Park Hotel. The bold flavours delivered by the award-winning menu match the opulent decor.

2. Matt Worswick at The Latymer

# 50

## Interconnecting trampolines at Gravity Force

Bounce your way around Gravity Force, one of the first trampoline parks in the UK. Everyone can enjoy energetic fun on wall-to-wall trampolines, with sessions for tots and families, plus adult fitness classes.

3. Gravity force

# 45

## Minutes to learn to wakeboard at Quays Wake & Ski

Wakeboarding, wakesurfing, water-skiing and stand-up paddleboarding are just some of the awesome watersports on offer at Quays Wake and Ski, which boasts a sheltered freshwater lake and one-to-one tuition.

4. Quays wake and ski

# 24

## Hectares of open space to explore at Frimley Lodge Park

There's something for all the family here, from woodlands and meadows, picnic areas and playgrounds to a pitch and putt course and football and cricket pitches. There's even a miniature railway.

5. Frimley Lodge Park

# 2

## AA Rosettes awarded to Aviator Brasserie

This intimate restaurant presents a variety of classic and seasonal dishes, inspired by fresh, locally sourced products and accompanied by carefully selected boutique wines.

6. Aviator Brasserie

# Relax and unwind

MacDonald Frimley Hall  
Hotel & Spa



# Built for modern life



Sat Nav location  
GU16 9QE

Unlock the door, unpack and relax. A home at So Resi Frimley has been designed with easy living in mind, featuring light and bright interiors which cleverly maximise space.

All properties come with allocated car parking and some offer private outdoor space, from generous gardens to airy balconies. All apartments have access to communal cycle storage.

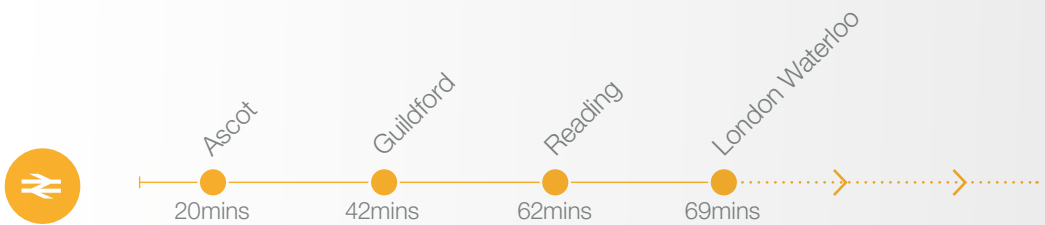
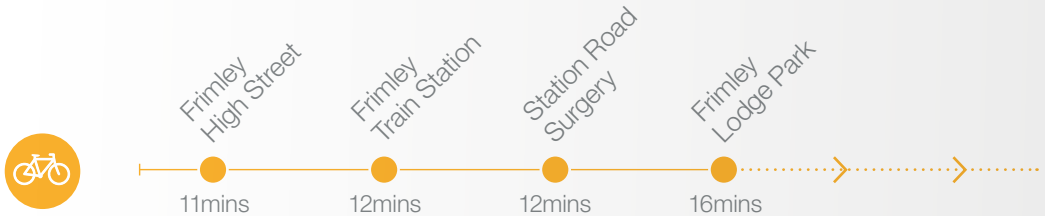
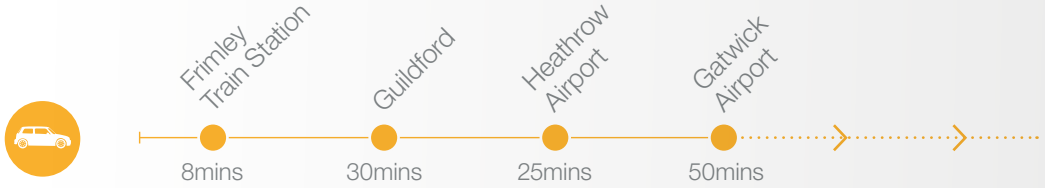
This stylish collection of So Resi shared ownership homes is part of a wider development of new houses and new and refurbished apartments. Great attention has been paid to preserving the history of the development, where mature trees and a sympathetically restored sunken garden add to the green appeal of the landscaped communal grounds.

### Key

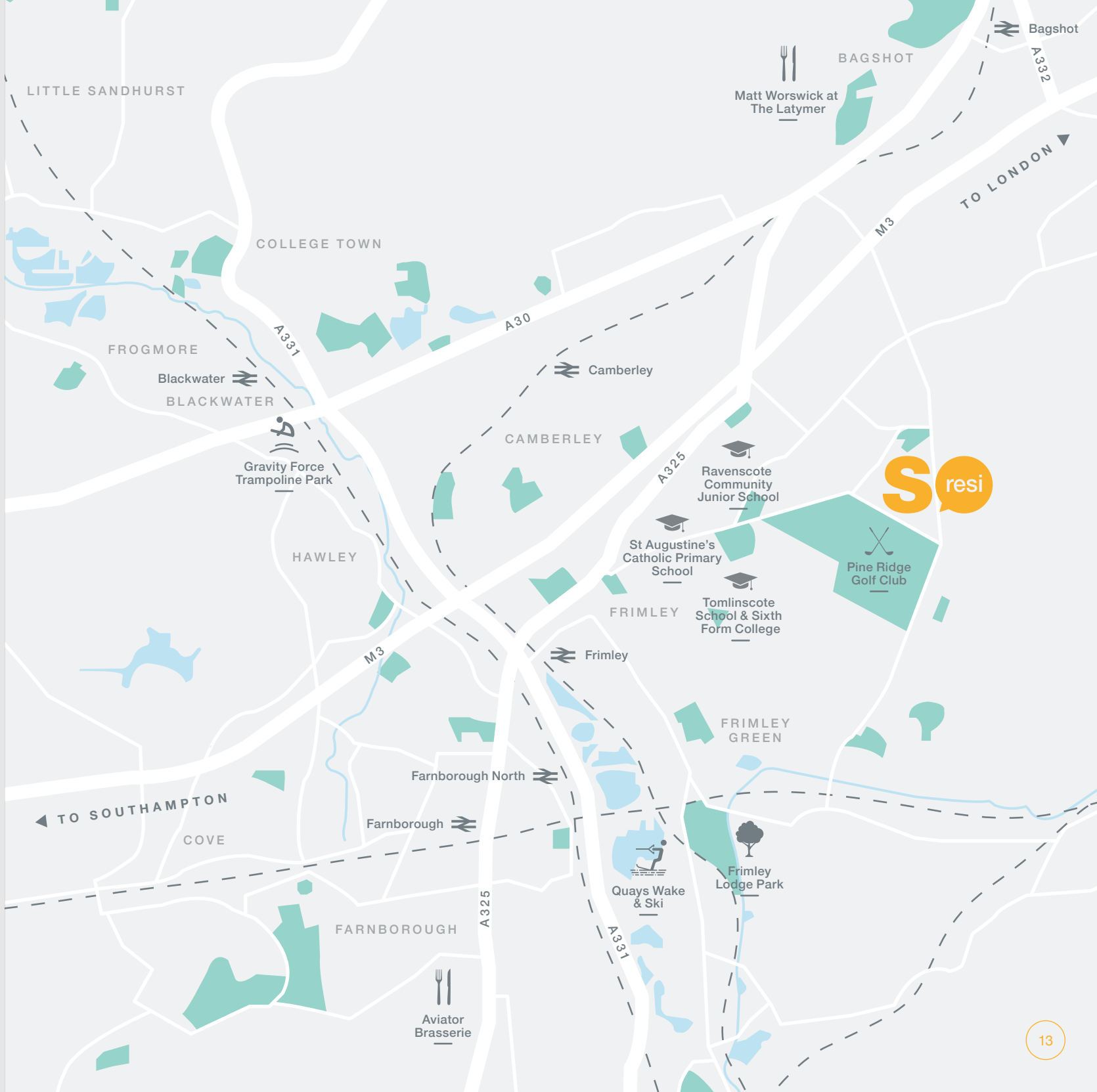
- So Resi units
- Parking
- Bin store
- Private units
- Sheds
- Substation
- Affordable Rent
- Cycle store
- Pressure Reducing Station

The site layout is intended for illustrative purposes only and is subject to change.

# So easy to get from A-B



\*Times taken from Google Maps





So refined &  
contemporary



# Quality, comfort & style

Designed for the way we live today, our homes make the very best use of space. Sleek fixtures and fittings, modern appliances and integrated storage all add to the quality feel of our homes, and the neutral décor means you can settle in straight away.

Our collection of So Resi Frimley homes include 1 and 2 bedroom apartments, plus 2 and 3 bedroom houses. All you need to do is choose which one suits you.

## General

- Neutral décor throughout
- Built-in wardrobes to master bedrooms
- Provision for Sky multiroom to lounge and master bedroom\*
- Ceramic tiling to bathroom, cloakroom and WC
- Neutral carpet to lounge, dining area, bedrooms, hall and landing

## Kitchen

- Fully fitted kitchen
- Ceramic floor tiling to kitchens of houses
- Integrated appliances include hob and oven with chimney hood, dishwasher, washer / dryer, and fridge freezer
- Overhead downlights
- Under pelmet lighting

## Bathroom

- Contemporary bathroom suite
- Ceramic wall and floor tiling
- Chrome thermostatic shower over bath
- Chrome ladder towel radiator

## External

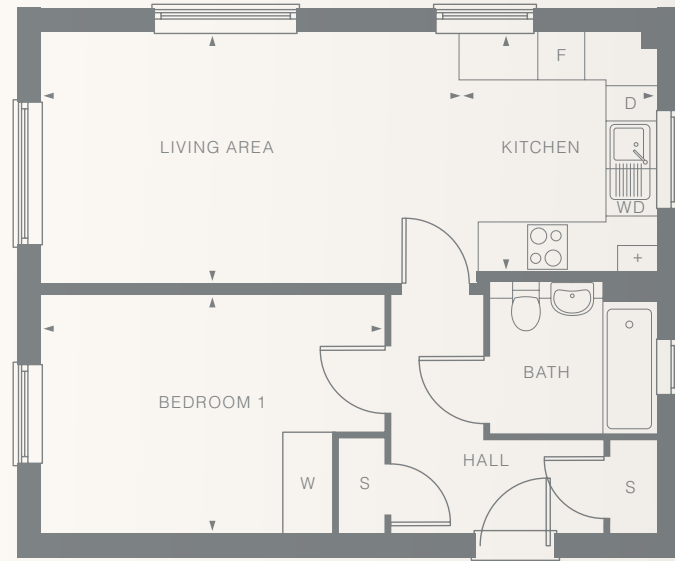
- Private rear garden with shed to houses
- Balcony or terrace to selected apartments
- Secure communal cycle storage to apartments
- Allocated parking

## Security & peace of mind

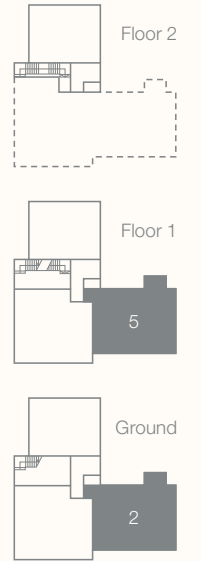
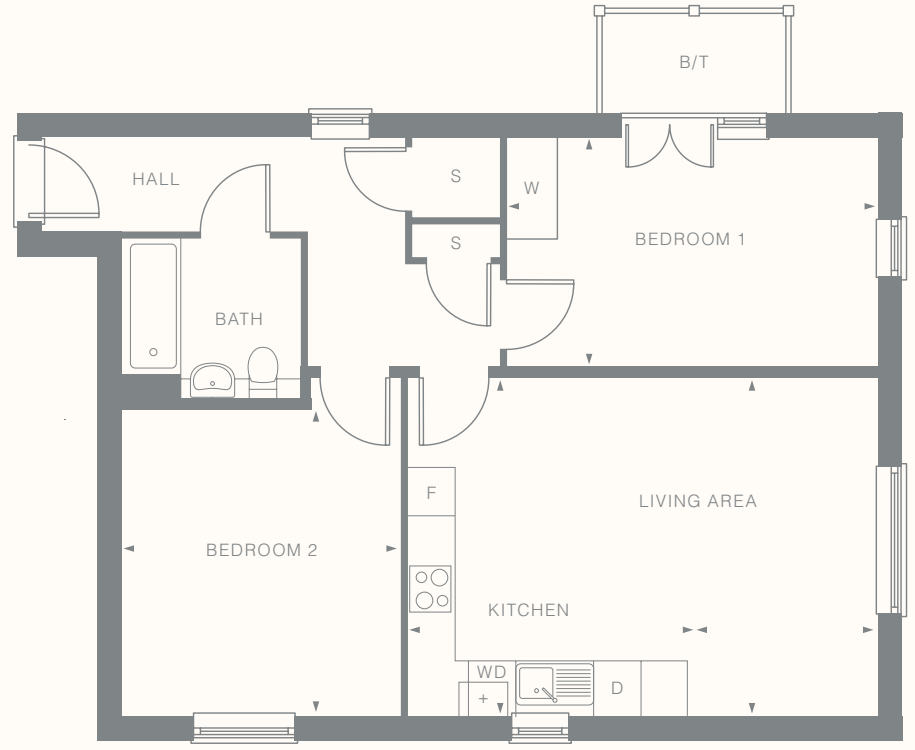
- Secure entry system to apartments
- Carbon monoxide detectors
- Fire brigade approved smoke and heat detectors



Type 1  
1 bedroom apartment



Type 2  
2 bedroom apartment



Plots	Floor
1	G
4	1

Room	Metric	Imperial
Kitchen	2.50m x 3.03m	8'2" x 9'11"
Living area	5.39m x 3.19m	17'8" x 10'6"
Bedroom 1	4.40m x 3.03m	14'5" x 9'11"
GIA	50.5m <sup>2</sup>	543ft <sup>2</sup>

- + Boiler
- F Fridge freezer
- S Storage
- D Dishwasher
- WD Washer dryer
- W Wardrobe

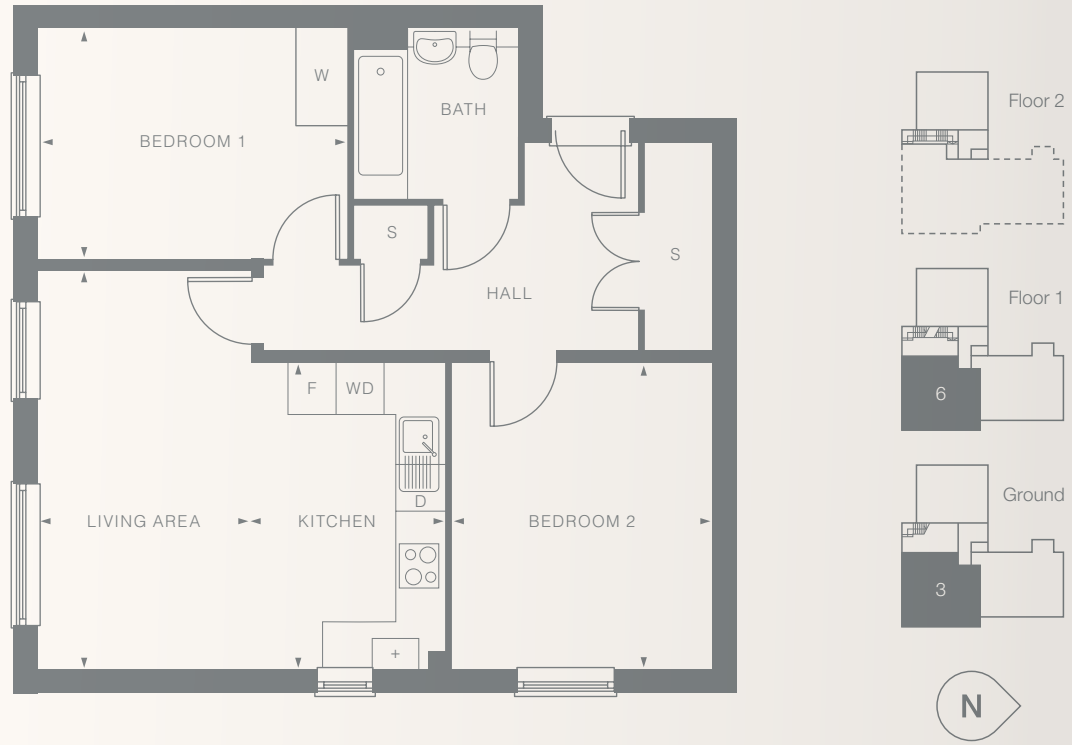
Plots	Floor
2	G
5	1

Room	Metric	Imperial
Kitchen	3.55m x 4.13m	11'8" x 13'7"
Living area	2.25m x 4.13m	7'4" x 13'7"
Bedroom 1	4.58m x 2.79m	15'0" x 9'2"
Bedroom 2	3.43m x 3.74m	11'3" x 12'3"
GIA	67.5m <sup>2</sup>	726ft <sup>2</sup>

- + Boiler
- F Fridge freezer
- S Storage
- D Dishwasher
- WD Washer dryer
- W Wardrobe
- B/T Balcony or terrace

All floor plans in this brochure are for general guidance only. All room dimensions are subject to a plus/minus 5% tolerance. Measures are from plans and "as built" dimensions may vary. Any dimensions shown are not intended to be used for carpet sizes, appliances, spaces or items of furniture. These particulars do not constitute any part of an offer or contract.

Type 3  
2 bedroom apartment



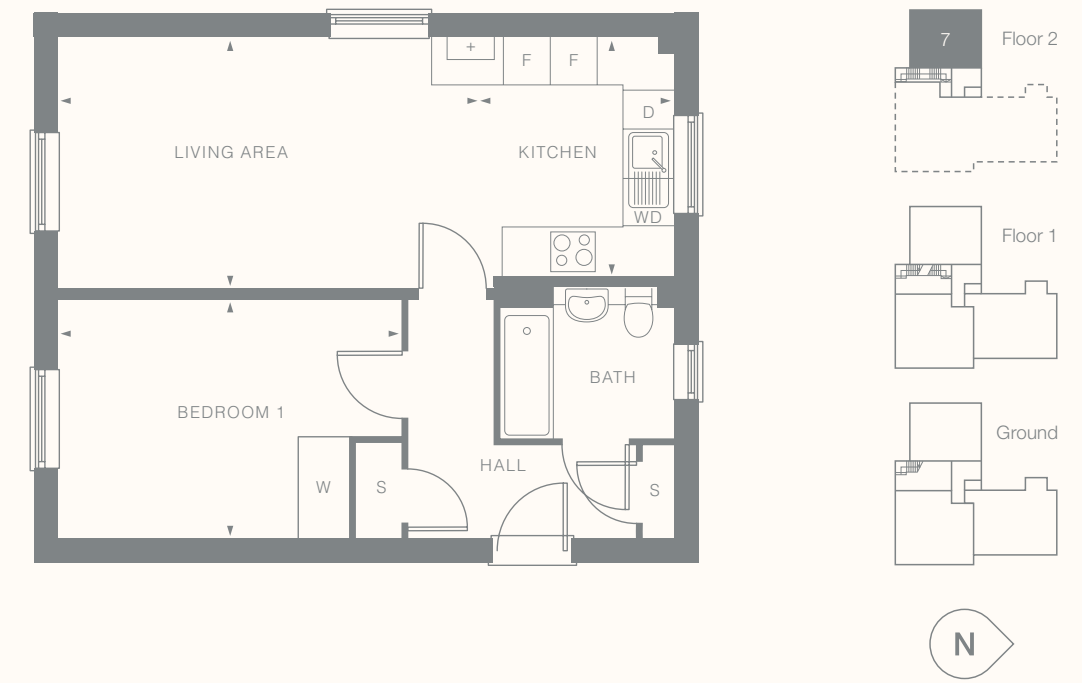
Plots	Floor
3	G
6	1

Room	Metric	Imperial
Kitchen	2.51m x 3.93m	8'3" x 12'11"
Living area	2.72m x 5.12m	8'11" x 16'10"
Bedroom 1	3.98m x 2.93m	13'1" x 9'7"
Bedroom 2	3.35m x 3.93m	11'0" x 12'11"
GIA	67.8m <sup>2</sup>	729ft <sup>2</sup>

- + Boiler
- F Fridge freezer
- S Storage
- D Dishwasher
- WD Washer dryer
- W Wardrobe

All floor plans in this brochure are for general guidance only. All room dimensions are subject to a plus/minus 5% tolerance. Measures are from plans and "as built" dimensions may vary. Any dimensions shown are not intended to be used for carpet sizes, appliances, spaces or items of furniture. These particulars do not constitute any part of an offer or contract.

Type 4  
1 bedroom apartment



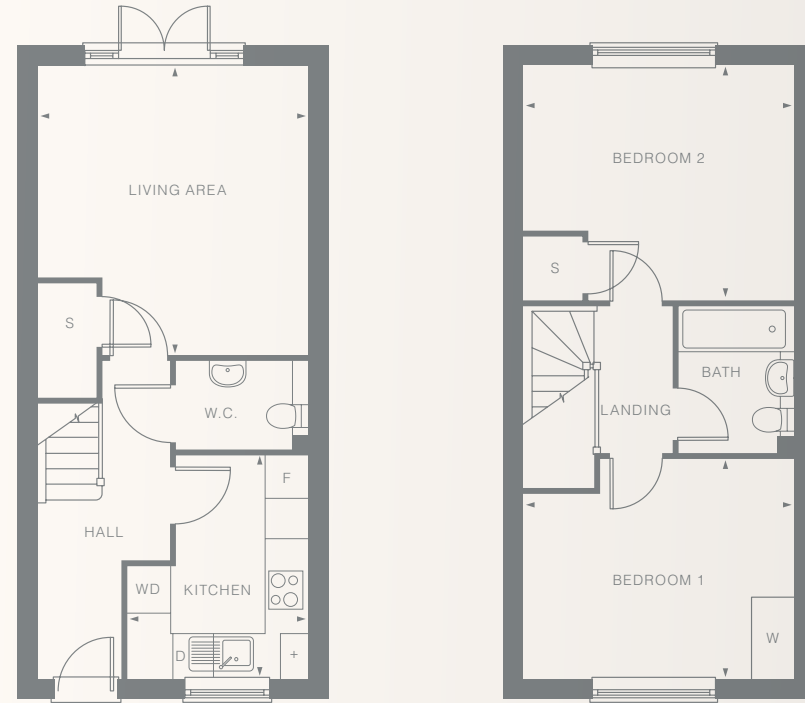
Plots	Floor
7	2

Room	Metric	Imperial
Kitchen	2.50m x 3.03m	8'2" x 9'11"
Living area	5.39m x 3.19m	17'8" x 10'6"
Bedroom 1	4.40m x 3.03m	14'5" x 9'11"
GIA	50.5m <sup>2</sup>	543ft <sup>2</sup>

- + Boiler
- F Undercounter fridge & freezer
- S Storage
- D Dishwasher
- WD Washer dryer
- W Wardrobe

Type 5

2 bedroom house



Ground floor

First floor



Plots

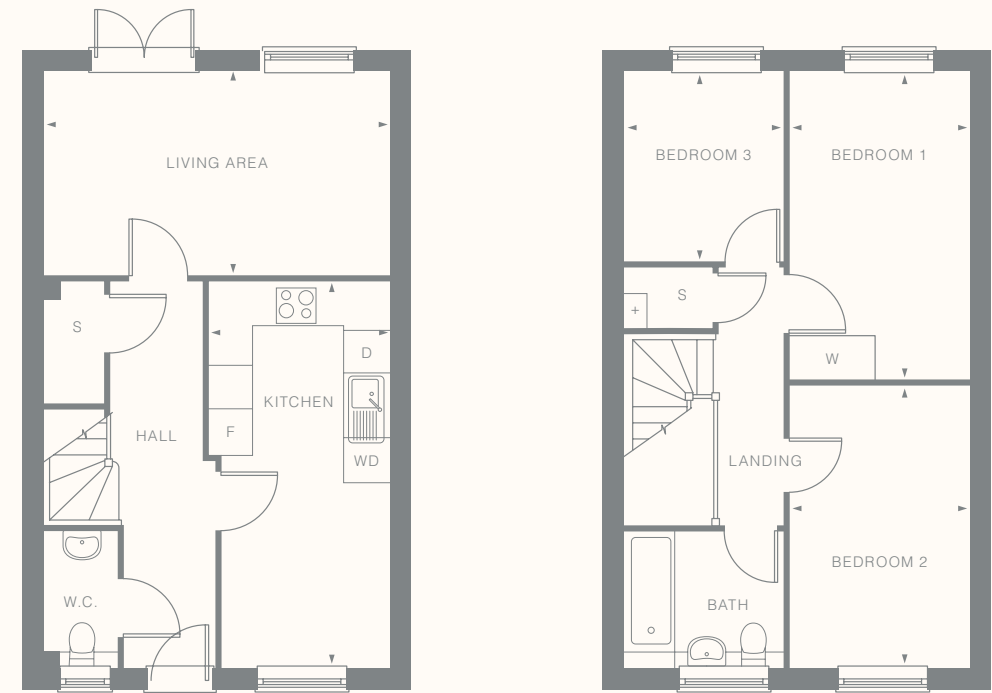
8	10
9	11

Room	Metric	Imperial	Legend
Kitchen	2.68m x 3.33m	8'9" x 10'11"	[+] Boiler
Living area	4.00m x 4.29m	13'11" x 14'1"	[F] Fridge freezer
Bedroom 1	4.00m x 3.28m	13'11" x 10'9"	[S] Storage
Bedroom 2	4.00m x 3.48m	13'11" x 11'5"	[D] Dishwasher
GIA	72.9m <sup>2</sup>	784ft <sup>2</sup>	[WD] Washer dryer
			[W] Wardrobe

All floor plans in this brochure are for general guidance only. All room dimensions are subject to a plus/minus 5% tolerance. Measures are from plans and "as built" dimensions may vary. Any dimensions shown are not intended to be used for carpet sizes, appliances, spaces or items of furniture. These particulars do not constitute any part of an offer or contract.

Type 6

3 bedroom house



Ground floor

First floor



Plots

12	14
13	15

Room	Metric	Imperial	Legend
Kitchen / dining area	2.56m x 5.52m	8'5" x 18'1"	[+] Boiler
Living area	4.95m x 2.89m	16'3" x 9'6"	[F] Fridge freezer
Bedroom 1	2.60m x 4.44m	8'6" x 14'7"	[S] Storage
Bedroom 2	2.60m x 4.05m	8'6" x 13'3"	[D] Dishwasher
Bedroom 3	2.28m x 2.73m	7'6" x 9'0"	[WD] Washer dryer
GIA	84.8m <sup>2</sup>	912ft <sup>2</sup>	[W] Wardrobe



**With So Resi, you buy your own home in your own way. You start with a share that's right for you, then you can buy extra shares over time, so it's all manageable and suits your income.**

You start by buying between 25% and 75% of your So Resi home. That means your monthly mortgage payments and deposit are smaller than they would be if you bought your home outright. There are two other monthly payments for your So Resi home. One is the So Resi payment for the share of your home that Metropolitan Thames Valley owns. The other is the service charge, which pays to look after the building you live in. There are also the usual other costs, like household utility bills. You can choose to buy a bigger share of your So Resi home in the future, and even own 100%. The bigger the share you own, the lower your So Resi payment will be.

**You can sell your share at any time if you decide to move on.**

#### **We're here to help**

Whatever your needs, we're on hand to help at every stage. First we'll help you understand all the costs and work out what's affordable for you. If you decide to go ahead, we'll be there to answer your questions. And in the future, we can help you with buying a bigger share of your home, or with selling up if it's time for a change.

**Email [sales@soresi.co.uk](mailto:sales@soresi.co.uk)  
or visit [www.soresi.co.uk](http://www.soresi.co.uk)**

#### **Working in partnership with**



MTVH has taken all reasonable care in the preparation of the information given in this brochure. However, this information is subject to change and has been prepared solely for the purpose of providing general guidance. MTVH does not warrant the accuracy or completeness of this information. Particulars are given for illustrative purposes only. MTVH undertakes continuous product development and any information given relating to our products may vary from time to time. The information and particulars set out within this brochure do not constitute part of a formal offer invitation or contract to acquire the relevant property. For the reasons mentioned above, no information contained in this brochure is to be relied upon. In particular, all plans prospectus, descriptions, dimensions and measurements are approximate and provided for guidance only. Such information is given without responsibility on the part of MTVH.

