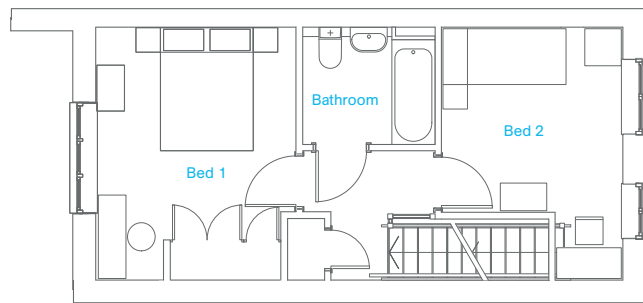
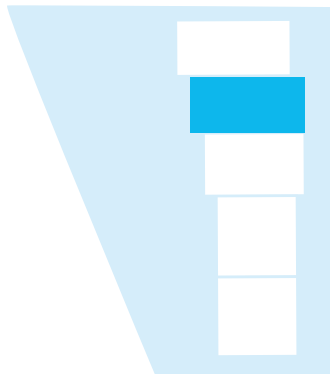




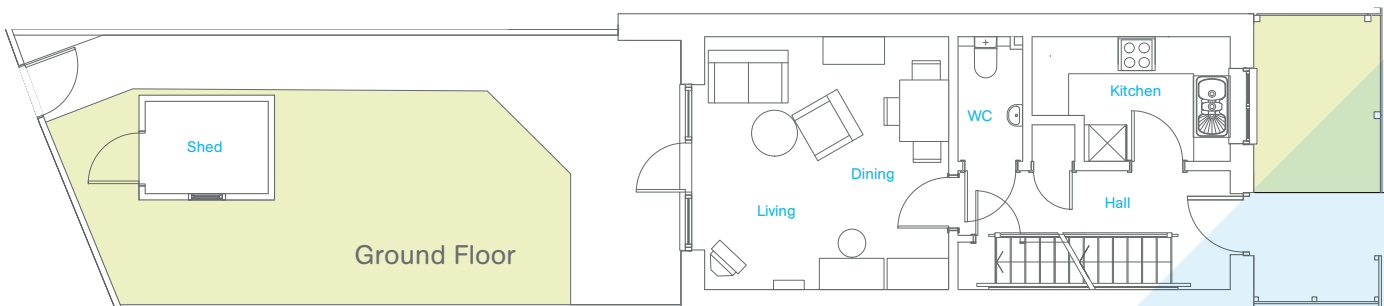
Plot 2 - 118b

70.15 sqm

WC	1.05m x 2.03m
Dining / Living	3.98m x 4.10m
Kitchen	2.03m x 3.22m
Bathroom	1.90m x 2.15m
Bedroom 2	2.95m x 4.10m
Bedroom 1	3.24m x 4.10m
Rear Garden	4.37m x 10.83m
Front Garden	4.70m x 2.00m



First Floor



Ground Floor

All information in this document is correct at time of publication (December 2018). Images are for illustrative purposes only and dimensions are not intended to form part of any contract or warranty. Furniture and landscaping is shown for illustrative purposes only. Individual features such as windows, brick and other materials' colours may vary, as may heating and electrical layouts. Images provided of the proposed development do not show final details of gradients of land, boundary treatments, local authority street lighting or landscaping. We aim to build according to the layout, but occasionally we do have to change property designs, boundaries, landscaping and the positions of roads, footpaths, street lighting and other features as the development proceeds. All services and facilities may not be available on completion of the property. Should you have any queries please direct them through your legal representative. Image for illustrative purposes only.