

Queens Road

Shared Ownership Two Bedroom House Radcliffe-on-Trent Nottingham, NG12 1DL

A two bedroom house in West Bridgford, offering parking, gardens and kitchen with appliances.

Kitchen/Diner

- Fitted kitchen with Somme Oak veneered Formica worktop and white gloss fronts
- Zanussi oven, hob, washer/dryer, fridge freezer and dishwasher

Bathroom

- Fitted bathroom
- Tiled walls and floor

General



- Garden with shed
- Parking

Bedroom(s)

- Fitted wardrobe to main bedroom
- Carpet

Lounge

- Oak effect flooring

 0115 9371 713
 info@benjaminsproperty.com

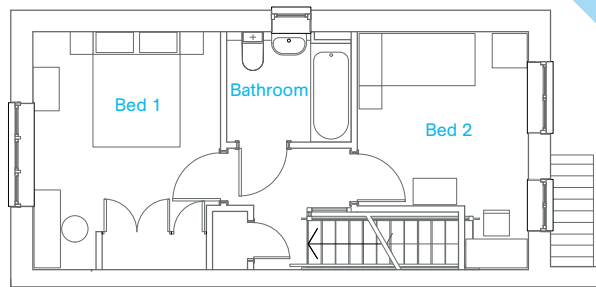
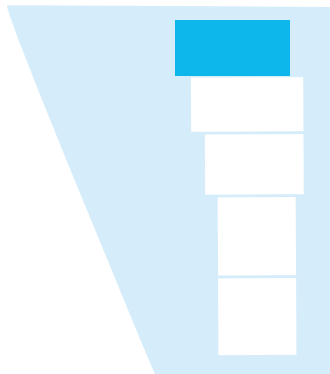




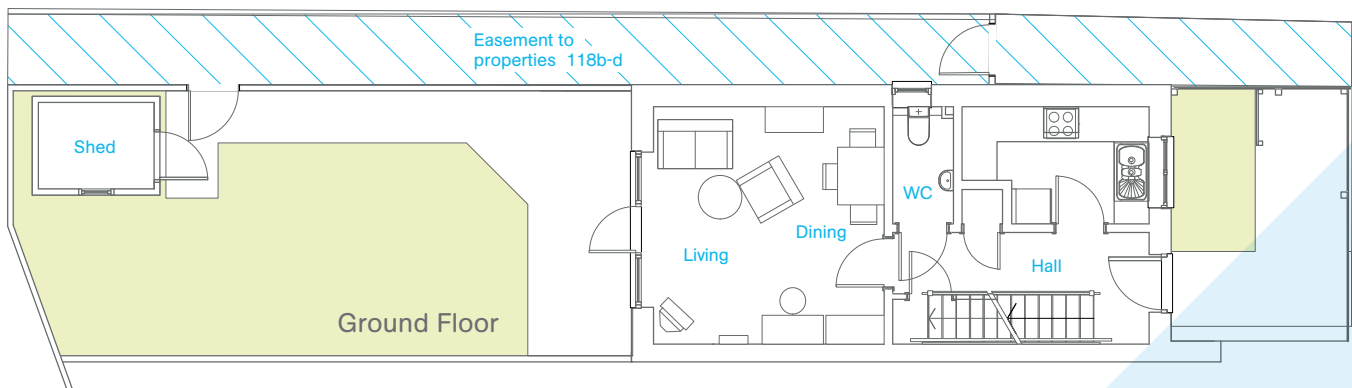
Plot 1 - 118a

70.15 sqm

WC	1.05m x 2.03m
Dining / Living	3.98m x 4.10m
Kitchen	2.03m x 3.22m
Bathroom	1.90m x 2.15m
Bedroom 2	2.95m x 4.10m
Bedroom 1	3.24m x 4.10m
Rear Garden	4.58m x 10.64m
Front Garden	4.40m x 3.10m



First Floor



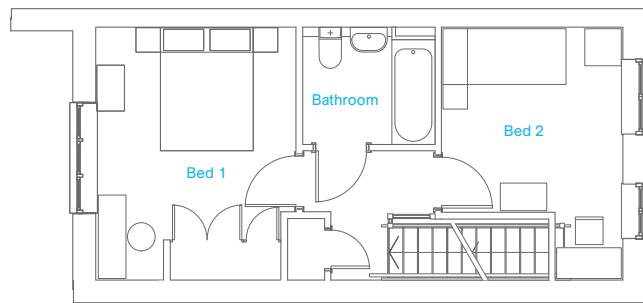
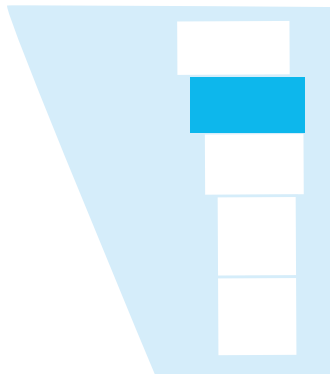
All information in this document is correct at time of publication (December 2018). Images are for illustrative purposes only and dimensions are not intended to form part of any contract or warranty. Furniture and landscaping is shown for illustrative purposes only. Individual features such as windows, brick and other materials' colours may vary, as may heating and electrical layouts. Images provided of the proposed development do not show final details of gradients of land, boundary treatments, local authority street lighting or landscaping. We aim to build according to the layout, but occasionally we do have to change property designs, boundaries, landscaping and the positions of roads, footpaths, street lighting and other features as the development proceeds. All services and facilities may not be available on completion of the property. Should you have any queries please direct them through your legal representative. Image for illustrative purposes only.



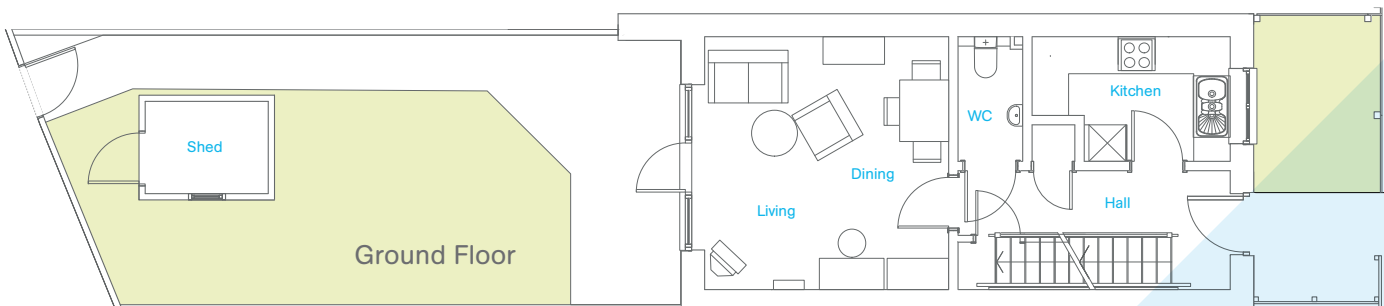
Plot 2 - 118b

70.15 sqm

WC	1.05m x 2.03m
Dining / Living	3.98m x 4.10m
Kitchen	2.03m x 3.22m
Bathroom	1.90m x 2.15m
Bedroom 2	2.95m x 4.10m
Bedroom 1	3.24m x 4.10m
Rear Garden	4.37m x 10.83m
Front Garden	4.70m x 2.00m



First Floor



Ground Floor

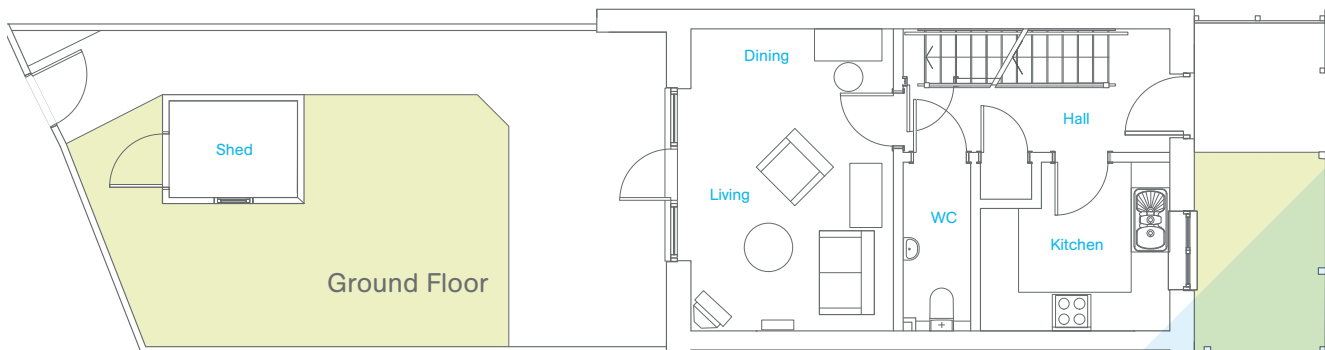
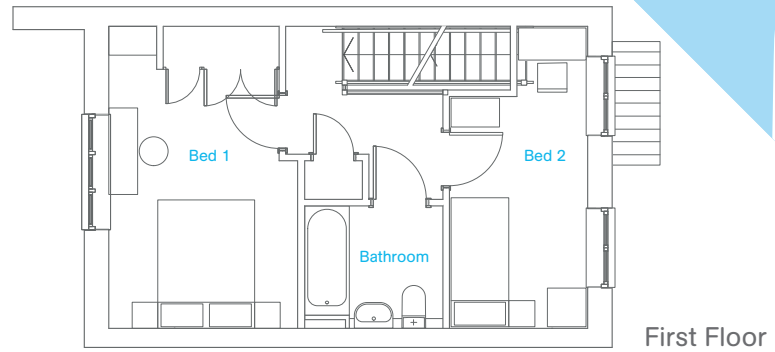
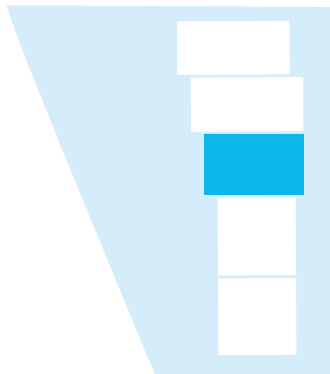
All information in this document is correct at time of publication (December 2018). Images are for illustrative purposes only and dimensions are not intended to form part of any contract or warranty. Furniture and landscaping is shown for illustrative purposes only. Individual features such as windows, brick and other materials' colours may vary, as may heating and electrical layouts. Images provided of the proposed development do not show final details of gradients of land, boundary treatments, local authority street lighting or landscaping. We aim to build according to the layout, but occasionally we do have to change property designs, boundaries, landscaping and the positions of roads, footpaths, street lighting and other features as the development proceeds. All services and facilities may not be available on completion of the property. Should you have any queries please direct them through your legal representative. Image for illustrative purposes only.



Plot 3 - 118c

70.02 sqm

WC	1.05m x 2.63m
Dining / Living	3.15m x 4.70m
Kitchen	2.63m x 2.95m
Bathroom	1.90m x 2.15m
Bedroom 1	2.94m x 4.70m
Bedroom 2	2.15m x 4.70m
Rear Garden	4.90m x 10.16m
Front Garden	5.16m x 2.00m



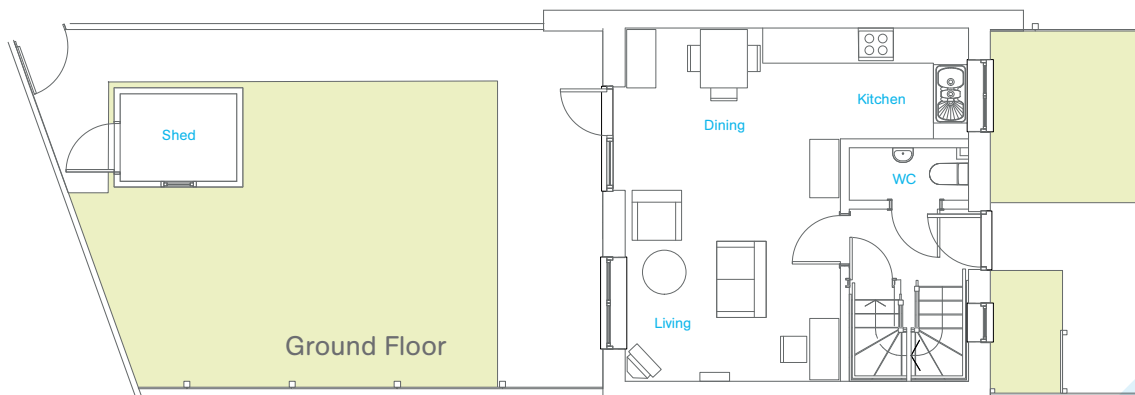
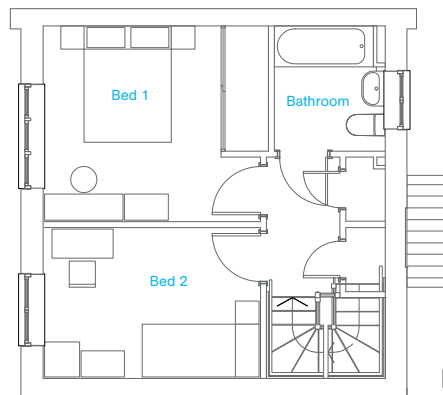
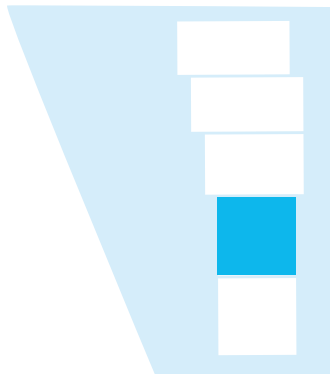
All information in this document is correct at time of publication (December 2018). Images are for illustrative purposes only and dimensions are not intended to form part of any contract or warranty. Furniture and landscaping is shown for illustrative purposes only. Individual features such as windows, brick and other materials' colours may vary, as may heating and electrical layouts. Images provided of the proposed development do not show final details of gradients of land, boundary treatments, local authority street lighting or landscaping. We aim to build according to the layout, but occasionally we do have to change property designs, boundaries, landscaping and the positions of roads, footpaths, street lighting and other features as the development proceeds. All services and facilities may not be available on completion of the property. Should you have any queries please direct them through your legal representative. Image for illustrative purposes only.



Plot 4 - 118d

71.00 sqm

WC	0.90m x 2.04m
Dining / Living	3.69m x 6.05m
Kitchen	1.90m x 3.23m
Bathroom	1.90m x 2.15m
Bedroom 2	2.59m x 3.73m
Bedroom 1	3.36m x 3.87m
Rear Garden	6.10m x 9.90m
Front Garden	6.20m x 2.60m



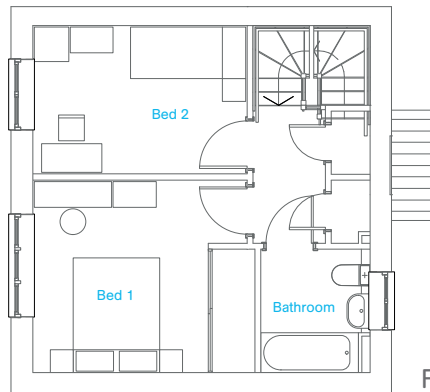
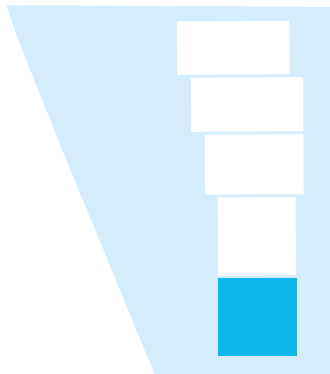
All information in this document is correct at time of publication (December 2018). Images are for illustrative purposes only and dimensions are not intended to form part of any contract or warranty. Furniture and landscaping is shown for illustrative purposes only. Individual features such as windows, brick and other materials' colours may vary, as may heating and electrical layouts. Images provided of the proposed development do not show final details of gradients of land, boundary treatments, local authority street lighting or landscaping. We aim to build according to the layout, but occasionally we do have to change property designs, boundaries, landscaping and the positions of roads, footpaths, street lighting and other features as the development proceeds. All services and facilities may not be available on completion of the property. Should you have any queries please direct them through your legal representative. Image for illustrative purposes only.



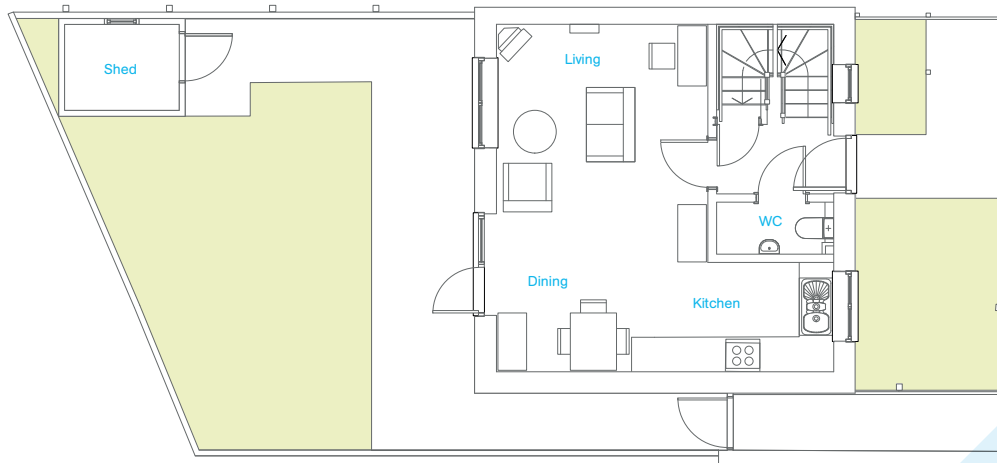
Plot 5 - 118e

71.00 sqm

WC	0.90m x 2.04m
Dining / Living	3.69m x 6.05m
Kitchen	1.90m x 3.23m
Bathroom	1.90m x 2.15m
Bedroom 2	2.59m x 3.73m
Bedroom 1	3.36m x 3.87m
Rear Garden	7.90m x 7.50m
Front Garden	6.50m x 2.50m



First Floor



Ground Floor

All information in this document is correct at time of publication (December 2018). Images are for illustrative purposes only and dimensions are not intended to form part of any contract or warranty. Furniture and landscaping is shown for illustrative purposes only. Individual features such as windows, brick and other materials' colours may vary, as may heating and electrical layouts. Images provided of the proposed development do not show final details of gradients of land, boundary treatments, local authority street lighting or landscaping. We aim to build according to the layout, but occasionally we do have to change property designs, boundaries, landscaping and the positions of roads, footpaths, street lighting and other features as the development proceeds. All services and facilities may not be available on completion of the property. Should you have any queries please direct them through your legal representative. Image for illustrative purposes only.

Queens Road



📞 0115 9371 713
 📧 info@benjaminsproperty.com



All information in this document is correct at time of publication (December 2018). Images are for illustrative purposes only and dimensions are not intended to form part of any contract or warranty. Furniture and landscaping is shown for illustrative purposes only. Individual features such as windows, brick and other materials' colours may vary, as may heating and electrical layouts. Images provided of the proposed development do not show final details of gradients of land, boundary treatments, local authority street lighting or landscaping. We aim to build according to the layout, but occasionally we do have to change property designs, boundaries, landscaping and the positions of roads, footpaths, street lighting and other features as the development proceeds. All services and facilities may not be available on completion of the property. Should you have any queries please direct them through your legal representative. Image for illustrative purposes only.