

NEON

Edgware, HA8

A collection of 1, 2 & 3 bedroom apartments available through Shared Ownership



NEON. Some places shine brighter.

—

Light-filled interiors, well-designed layouts, and a balcony to every apartment – whether you choose a one, two or three bedroom apartment, at NEON you will find a home expertly crafted for contemporary living.

Located in cosmopolitan North West London, NEON is not only superbly well-connected, with its Shared Ownership options it also makes living in one of the world's greatest global cities beautifully accessible.



Computer Generated Image



Live life in vivid colour.

Everything for everyday living can be found in the parade of shops along Burnt Oak Broadway and Watling Avenue. From enjoying a coffee whilst seated outside of Patisserie Romana to picking up handmade gelato and churros from twist Dessert, NEON is conveniently close. Head to Burnt Oak Leisure Centre after work to use its split-level gym, fitness classes and cycle studio. Raise your tennis, basketball or football games, scale the heights at The Arch Climbing Wall on the Broadway, and discover high fliers at the RAF Museum.

City living can also be remarkably green at NEON, and all within two or three miles of home. Mill Hill Park is a premier green space with acres of leafy trees and grassland, while Stanmore Country Park is the place to escape the bustle of city life, listening to birdsong, glimpsing muntjac deer, and watching the colours change through the seasons.

Distances taken from google.co.uk/maps and are approximate only.



Computer Generated Image



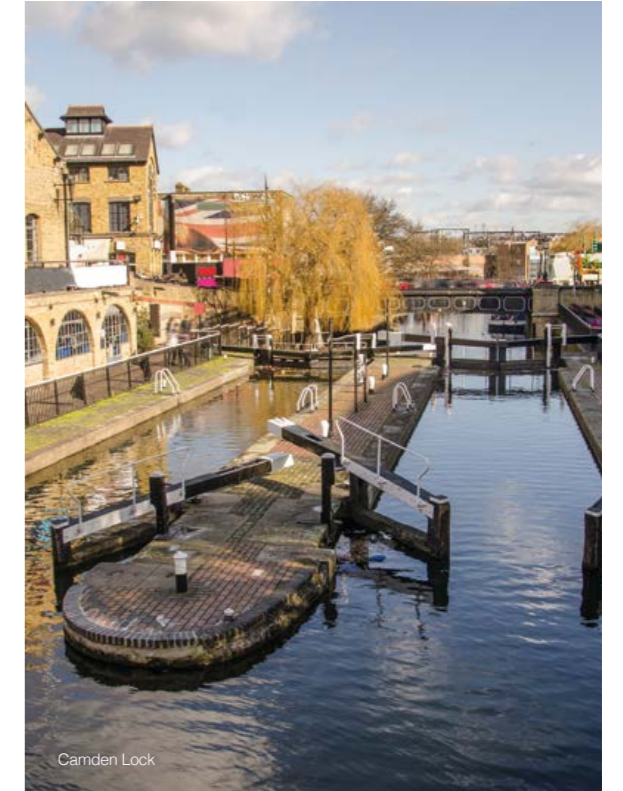
Computer Generated Image



London Eye



For illustrative purposes only



Camden Lock

Bright lights. Make the most of a 24/7 capital.

North London's primary shopping destination, the Brent Cross Shopping Centre, is home to 120 stores selling 2,000 brands and is open till 8pm so you can shop local and shop late. Enjoy lazy Sunday mornings at Camden's markets at The Stables market at Camden Town. Stroll the food market and stop at watering holes like Lockside Camden overlooking the Regent's Canal, with its craft beers, cocktails, all-day food and New York bar style interior – or stake a place on the roof terrace, one of the capital's favourite chill-out spots. Stay for the music, or head to the West End and Leicester Square in 29 minutes.

Summer in the city means balmy nights on the Southbank, with the London Wonderground and Underbelly Festival at Waterloo, 33 minutes away. Now an established annual event, enjoy world-class daredevil circus acts high above your head, cabaret, comedy, international street food and one of London's largest outdoor bars. Soak up the festival atmosphere on the banks of the Thames with the city skyline in the background.

Wherever you choose to spend your evenings, living on the night tube map means that at NEON you never need to miss out.



King's Cross St Pancras

Be in the spotlight.

NEON sits within a golden triangle of the M1, M25 and A406 North Circular to offer exceptional road links, and is also just 0.5 miles from Burnt Oak Underground station on the Northern line.

Whether it is relaxed weekends enjoying all the capital has to offer or fast-tracks to the City and Square Mile with direct trains to Bank. London Bridge is one stop further, from there you can reach Canary Wharf in just 6 minutes on the Jubilee Line.

And for a break in The City of Light, Paris, or beyond, Eurostar at King's Cross St Pancras is just 25 minutes away.



Burnt Oak Underground Station

Camden Town
20 MINUTES

King's Cross St Pancras
25 MINUTES

Old Street
30 MINUTES

Bank
34 MINUTES

London Bridge
36 MINUTES



Computer Generated Image

Shining specifications

Kitchen / Living / Dining

White gloss wall units and grey gloss base units

Expo grey kitchen worktops with integrated sink drainer surface, matching upstand and splash back

Kitchen cabinets with under pelmet lights

Stainless steel 1.5 bowl sink with chrome mixer tap

Integrated fridge freezer, fan operated electric oven, ceramic hob, chimney hood and free standing washer/dryer

Full-height Silestone splash-back behind hob

Amtico Pearl Wash Wood floor tiles

Bedroom(s)

Neutral carpet

Built-in sliding wardrobe to master bedroom only

Pendant lighting to all bedrooms

Bathroom

Roca white bathroom suite and chrome shower set

Glass shower screen

Large wall mounted quality mirror

Chrome electric heated towel rail

Recessed LED chrome downlights

Stone effect ceramic floor and wall tiles

Security & peace of mind

Visual door entry system and handset

Multi-lock walnut finish apartment door

Hardwired doorbell

Wired smoke detectors

Electricals

White electric sockets and light switches

TV points in living and master bedrooms

Satellite TV socket in living area (subscription required)

Amenities

Communal podium balcony

Parking



Images of a typical Catalyst interior. Standard specifications are correct at time of going to print, but are subject to change without notice. Please contact the sales executive for further information. Whilst every effort has been taken to ensure that the information here is correct, it has been supplied as a guide and Catalyst reserve the right to amend the specification as necessary and without notification.





One bedroom apartment

PLOTS 30, 44 & 58



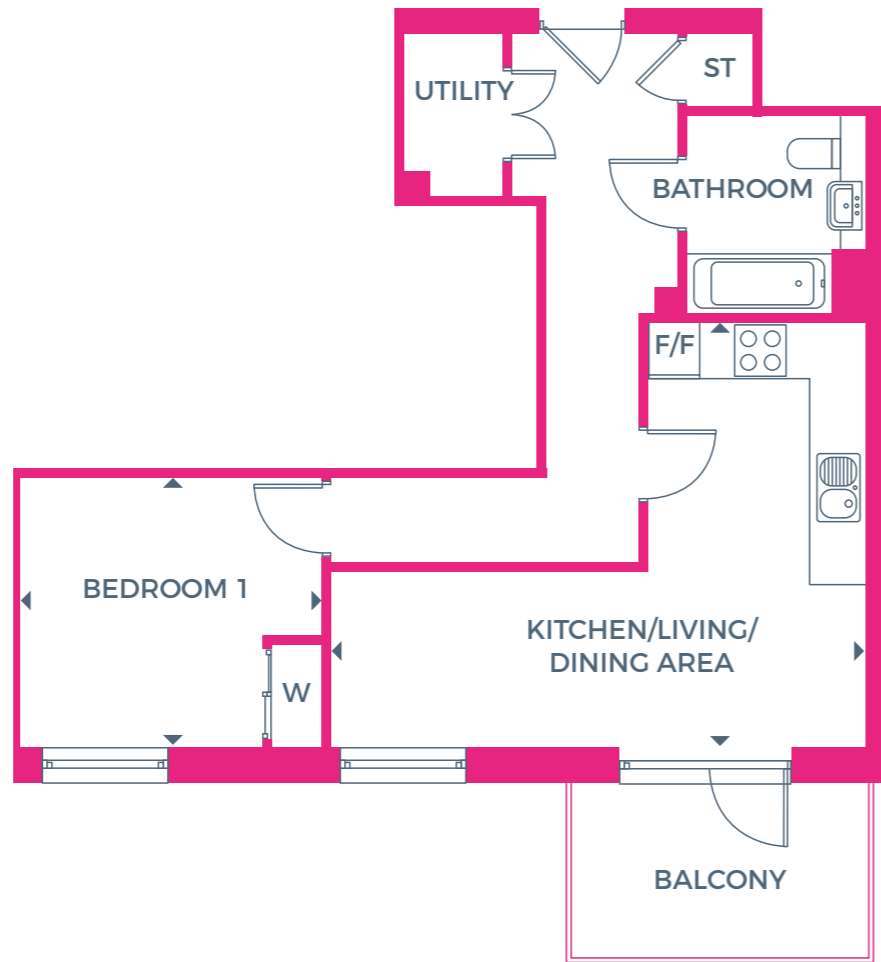
FIFTH FLOOR



FOURTH FLOOR



THIRD FLOOR



Gross Internal Area

53 sq m / 570 sq ft

Kitchen / Living / Dining Area

6.27m x 4.98m / 20'6" x 16'4"

Bedroom 1

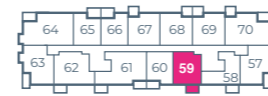
3.55m x 3.16m / 11'7" x 10'4"

F/F = Fridge Freezer ST = Store W = Wardrobe

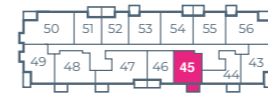


One bedroom apartment

PLOTS 31, 45 & 59



FIFTH FLOOR



FOURTH FLOOR



THIRD FLOOR



Gross Internal Area

59.4 sq m / 639 sq ft

Kitchen / Living / Dining Area

6.64m x 3.70m / 21'9" x 12'1"

Bedroom 1

3.86m x 3.44m / 12'8" x 11'3"

F/F = Fridge Freezer ST = Store W = Wardrobe

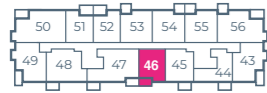


One bedroom apartment

PLOTS 32, 46 & 60



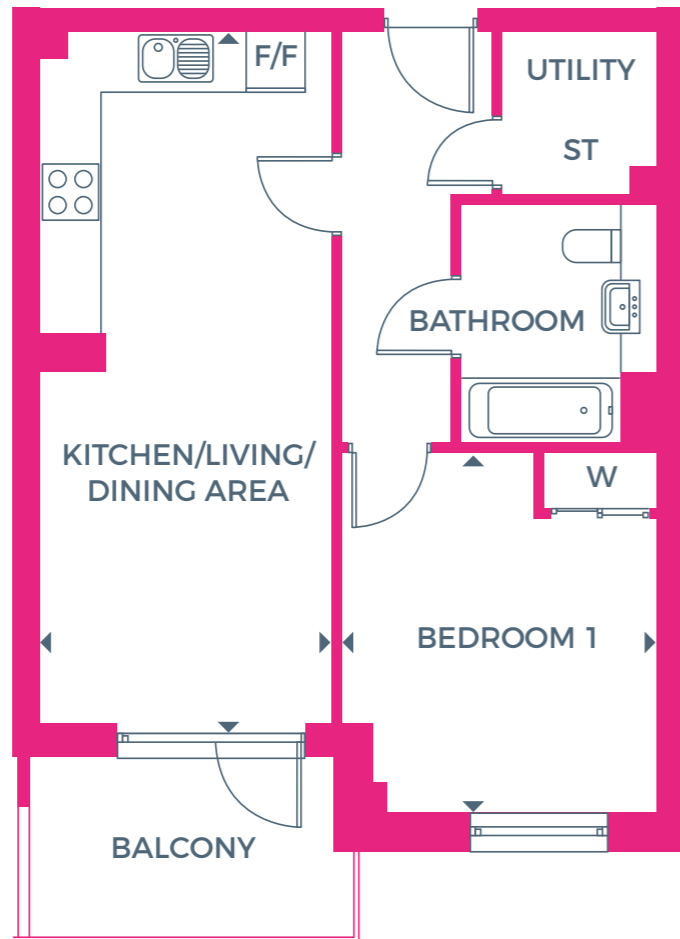
FIFTH FLOOR



FOURTH FLOOR



THIRD FLOOR



Gross Internal Area

51.3 sq m / 552 sq ft

Kitchen / Living / Dining Area

7.42m x 3.13m / 24'4" x 10'3"

Bedroom 1

3.86m x 3.38m / 12'8" x 11'1"

F/F = Fridge Freezer ST = Store W = Wardrobe



One bedroom apartment

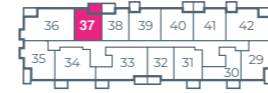
PLOTS 37, 51 & 65



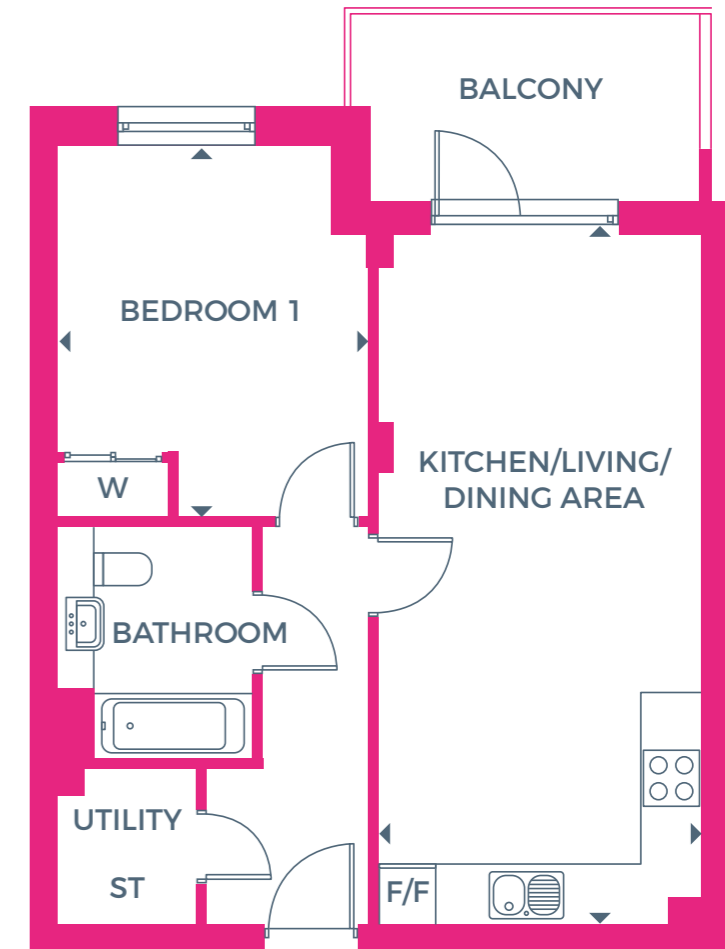
FIFTH FLOOR



FOURTH FLOOR



THIRD FLOOR



Gross Internal Area

53.3 sq m / 573 sq ft

Kitchen / Living / Dining Area

7.42m x 3.48m / 24'4" x 11'5"

Bedroom 1

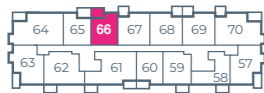
4.00m x 3.34m / 13'1" x 10'11"

F/F = Fridge Freezer ST = Store W = Wardrobe



One bedroom apartment

PLOTS 38, 52 & 66



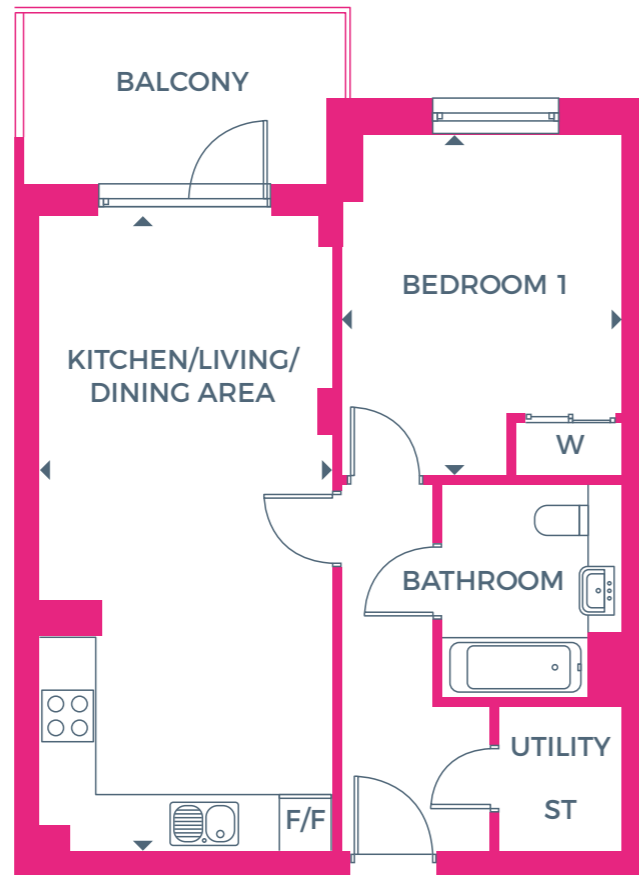
FIFTH FLOOR



FOURTH FLOOR



THIRD FLOOR



Gross Internal Area

52.8 sq m / 568 sq ft

Kitchen / Living / Dining Area

7.42m x 3.42m / 24'4" x 11'2"

Bedroom 1

3.99m x 3.28m / 13'1" x 10'9"

F/F = Fridge Freezer ST = Store W = Wardrobe



Two bedroom apartment

PLOTS 29, 43 & 57



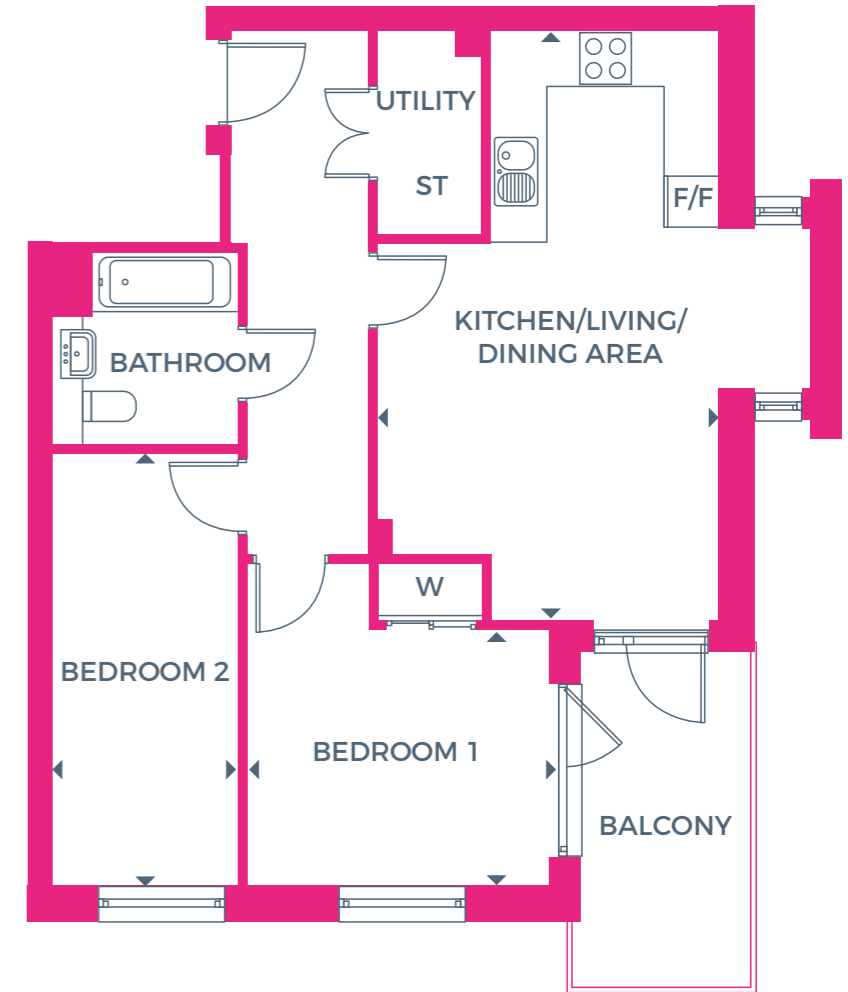
FIFTH FLOOR



FOURTH FLOOR



THIRD FLOOR



Gross Internal Area

68.2 sq m / 734 sq ft

Kitchen / Living / Dining Area

6.89m x 3.98m / 22'7" x 13'0"

Bedroom 1

3.54m x 3.02m / 11'7" x 9'10"

Bedroom 2

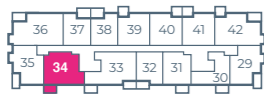
5.05m x 2.16m / 16'6" x 7'1"

F/F = Fridge Freezer ST = Store W = Wardrobe

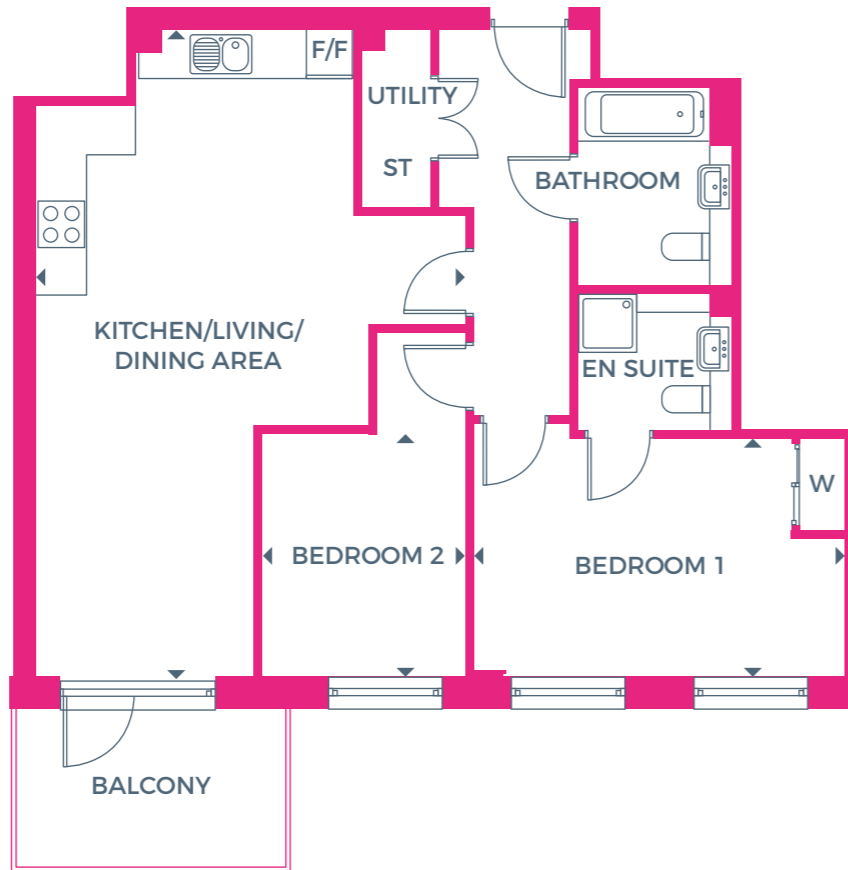


Two bedroom apartment

PLOT 34



THIRD FLOOR



Gross Internal Area

77.7 sq m / 836 sq ft

Kitchen / Living / Dining Area

8.37m x 4.30m / 27'4" x 14'1"

Bedroom 1

4.81m x 3.09m / 15'9" x 10'1"

Bedroom 2

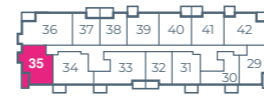
3.14m x 2.64m / 10'3" x 8'8"

F/F = Fridge Freezer ST = Store W = Wardrobe

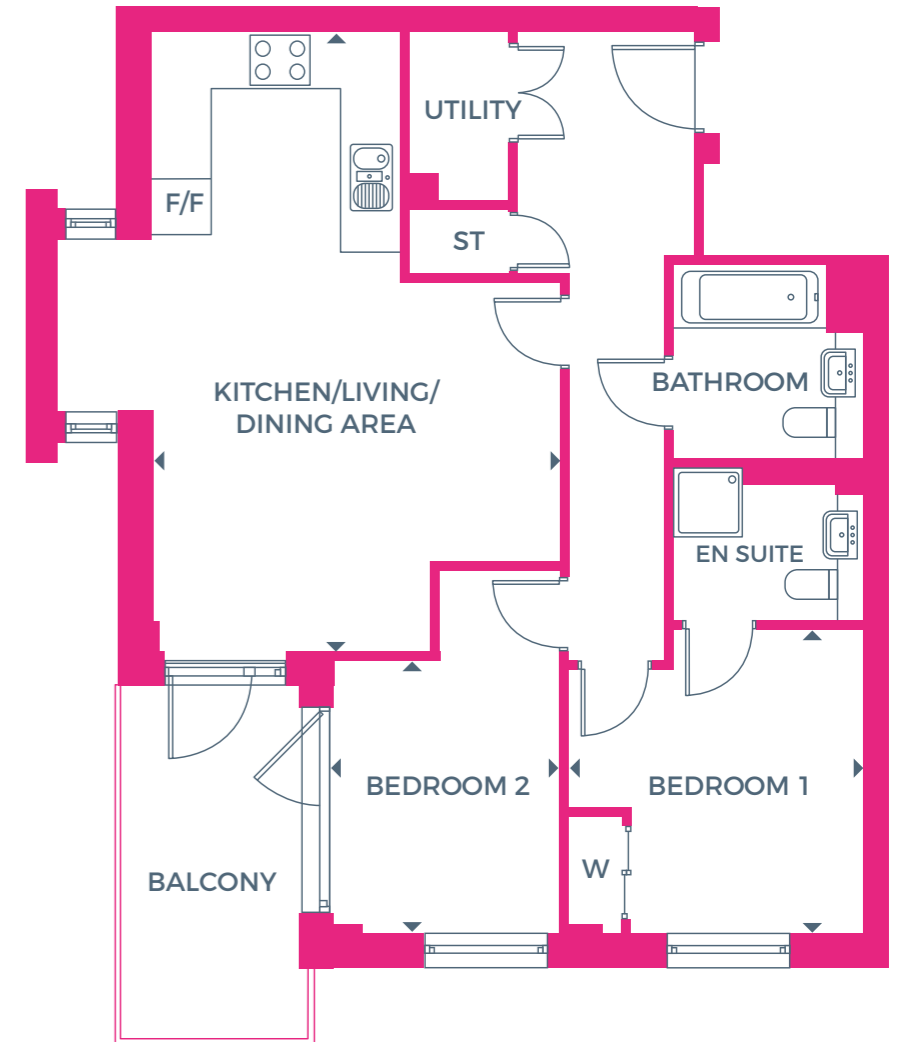


Two bedroom apartment

PLOTS 35



THIRD FLOOR



Gross Internal Area

67.7 sq m / 728 sq ft

Kitchen / Living / Dining Area

6.89m x 4.51m / 22'6" x 14'7"

Bedroom 1

3.35m x 3.27m / 10'9" x 10'7"

Bedroom 2

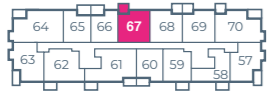
2.99m x 2.57m / 9'8" x 8'3"

F/F = Fridge Freezer ST = Store W = Wardrobe



Two bedroom apartment

PLOTS 39, 53 & 67



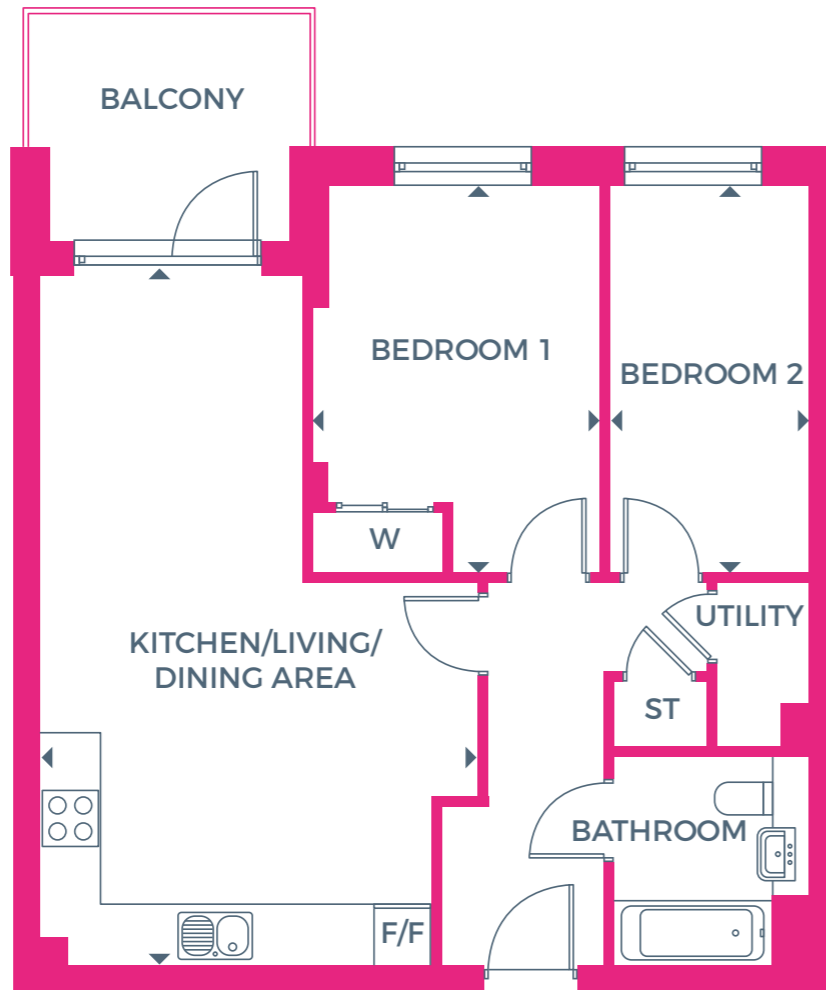
FIFTH FLOOR



FOURTH FLOOR



THIRD FLOOR



Gross Internal Area

63.7 sq m / 685 sq ft

Kitchen / Living / Dining Area

7.42m x 4.71m / 24'4" x 15'4"

Bedroom 1

4.16m x 3.09m / 13'7" x 10'1"

Bedroom 2

4.16m x 2.14m / 13'7" x 7'0"

F/F = Fridge Freezer ST = Store W = Wardrobe



Two bedroom apartment

PLOTS 40, 54 & 68



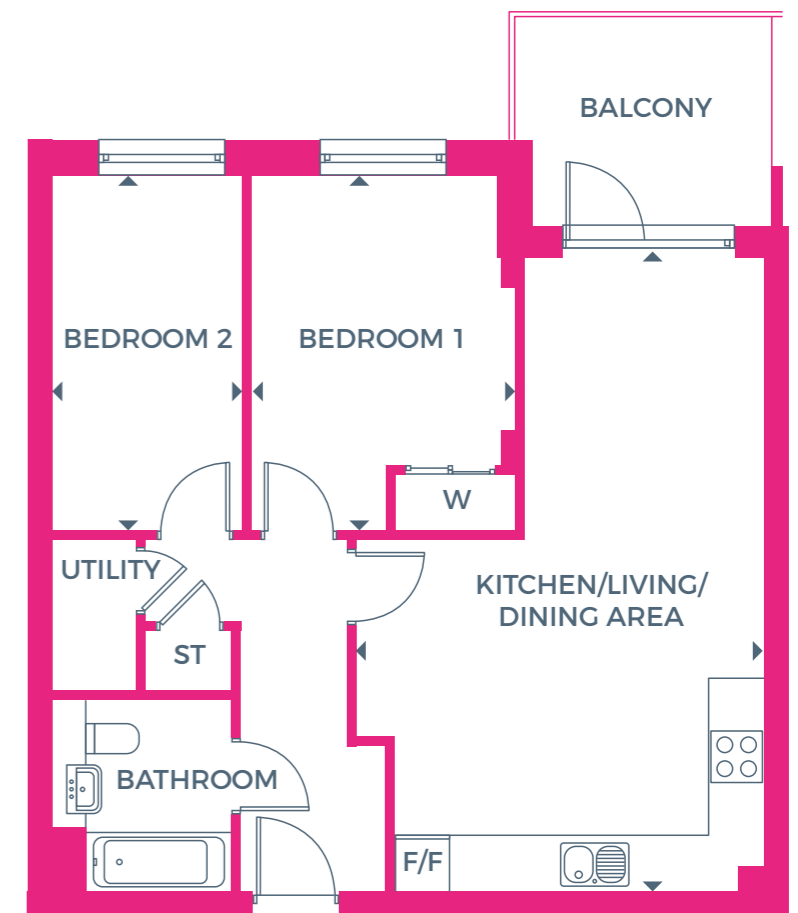
FIFTH FLOOR



FOURTH FLOOR



THIRD FLOOR



Gross Internal Area

67 sq m / 721 sq ft

Kitchen / Living / Dining Area

7.42m x 4.77m / 24'4" x 15'6"

Bedroom 1

4.16m x 3.08m / 13'7" x 10'1"

Bedroom 2

4.16m x 2.23m / 13'7" x 7'3"

F/F = Fridge Freezer ST = Store W = Wardrobe

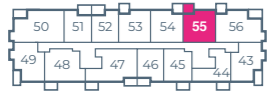


Two bedroom apartment

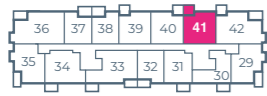
PLOTS 41, 55 & 69



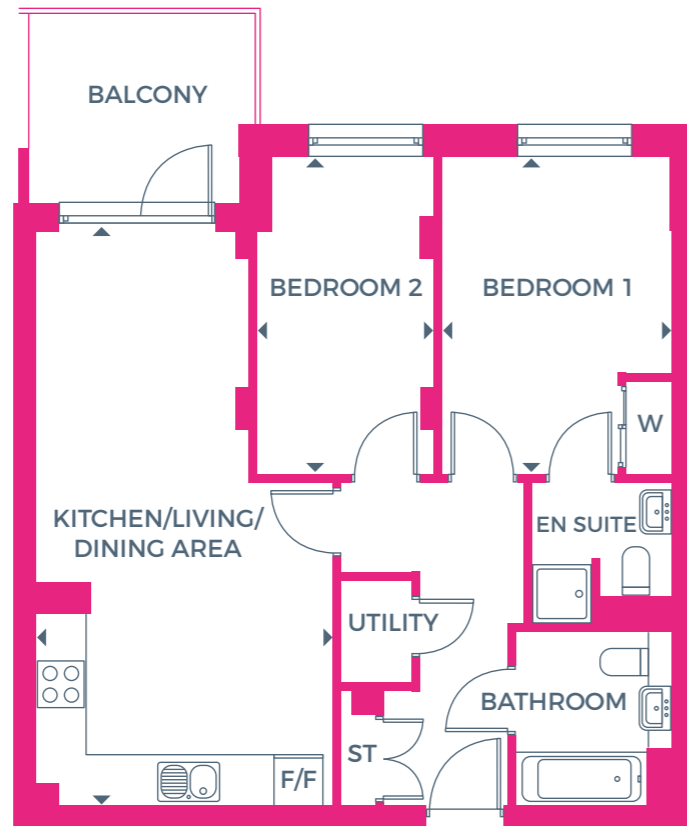
FIFTH FLOOR



FOURTH FLOOR



THIRD FLOOR



Gross Internal Area

65.5 sq m / 705 sq ft

Kitchen / Living / Dining Area

7.42m x 3.84m / 24'4" x 12'7"

Bedroom 1

4.09m x 2.98m / 13'5" x 9'9"

Bedroom 2

4.09m x 2.28m / 13'5" x 7'6"

F/F = Fridge Freezer ST = Store W = Wardrobe



Two bedroom apartment

PLOTS 48 & 62



FIFTH FLOOR



FOURTH FLOOR



Gross Internal Area

77.7 sq m / 836 sq ft

Kitchen / Living / Dining Area

8.37m x 5.56m / 27'5" x 18'2"

Bedroom 1

4.81m x 3.09m / 15'9" x 10'1"

Bedroom 2

4.46m x 2.64m / 14'6" x 8'8"

F/F = Fridge Freezer ST = Store W = Wardrobe



Two bedroom apartment

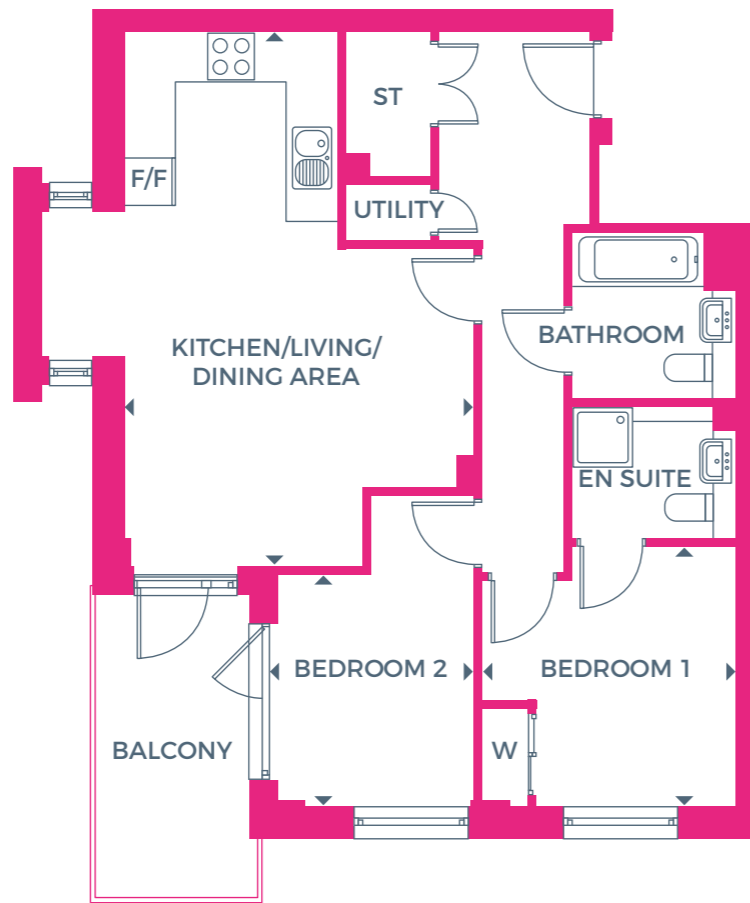
PLOTS 49 & 63



FIFTH FLOOR



FOURTH FLOOR



Gross Internal Area

67.7 sq m / 728 sq ft

Kitchen / Living / Dining Area

6.89m x 5.58m / 22'7" x 18'3"

Bedroom 1

3.35m x 3.28m / 11'0" x 10'9"

Bedroom 2

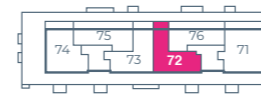
2.99m x 2.54m / 9'9" x 8'4"

F/F = Fridge Freezer ST = Store W = Wardrobe

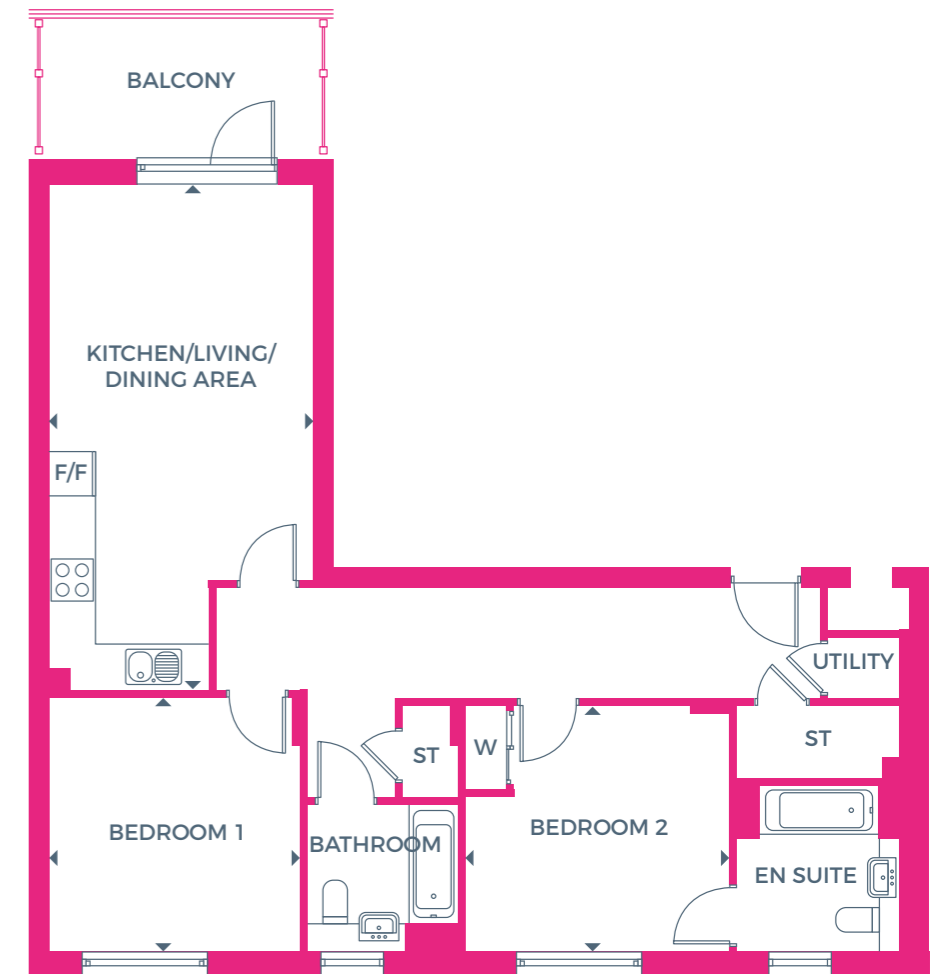


Two bedroom apartment

PLOT 72



SIXTH FLOOR



Gross Internal Area

84.5 sq m / 910 sq ft

Kitchen / Living / Dining Area

7.22m x 3.79m / 23'8" x 12'5"

Bedroom 1

3.63m x 3.60m / 11'11" x 11'9"

Bedroom 2

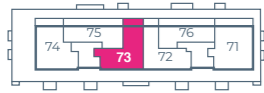
3.76m x 3.51m / 12'4" x 11'6"

F/F = Fridge Freezer ST = Store W = Wardrobe

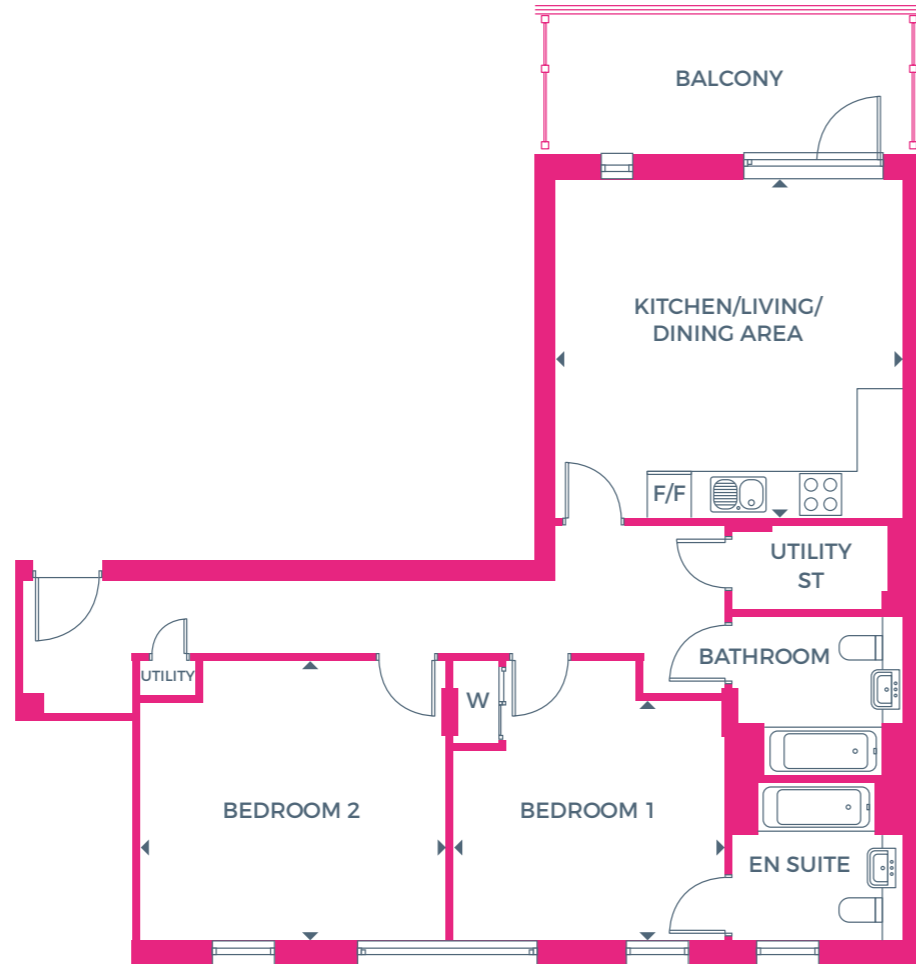


Two bedroom apartment

PLOT 73



SIXTH FLOOR



Gross Internal Area

89.2 sq m / 960 sq ft

Kitchen / Living / Dining Area

5.00m x 4.87m / 16'5" x 16'0"

Bedroom 1

3.87m x 3.46m / 12'8" x 11'4"

Bedroom 2

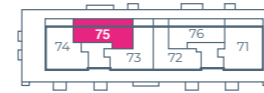
4.42m x 4.03m / 14'6" x 13'2"

F/F = Fridge Freezer ST = Store W = Wardrobe

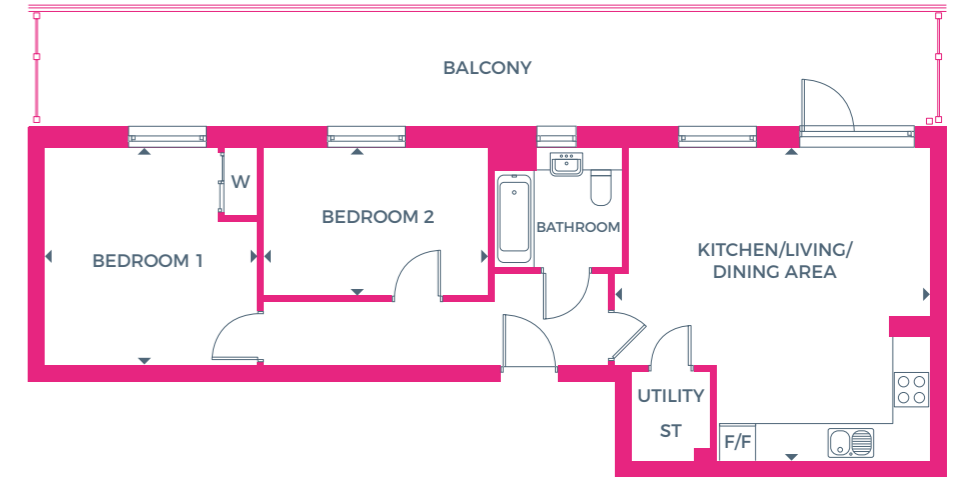


Two bedroom apartment

PLOT 75



SIXTH FLOOR



Gross Internal Area

67.8 sq m / 730 sq ft

Kitchen / Living / Dining Area

5.53m x 5.48m / 18'1" x 17'9"

Bedroom 1

3.80m x 3.73m / 12'5" x 12'2"

Bedroom 2

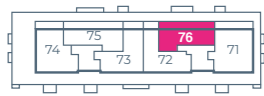
3.93m x 2.60m / 12'10" x 8'6"

F/F = Fridge Freezer ST = Store W = Wardrobe

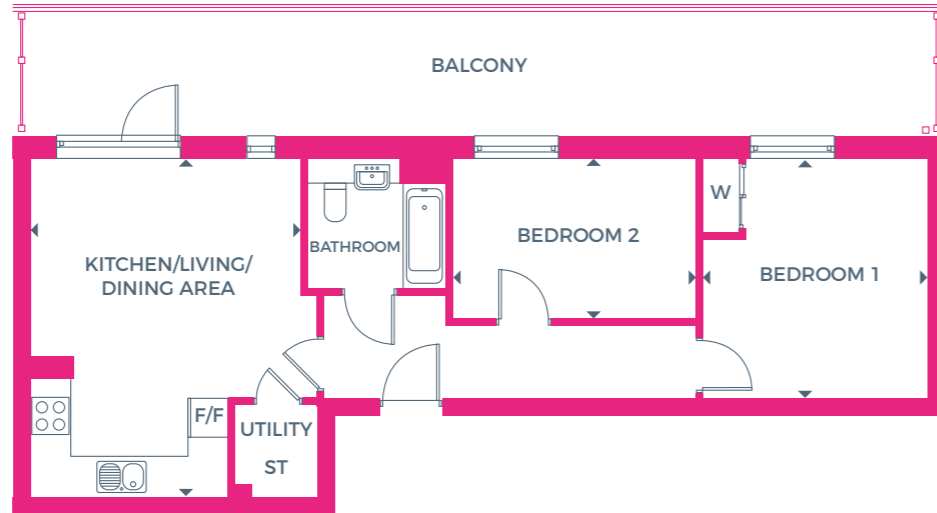


Two bedroom apartment

PLOT 76



SIXTH FLOOR



Gross Internal Area

63.8 sq m / 687 sq ft

Kitchen / Living / Dining Area

5.48m x 4.38m / 17'11" x 14'4"

Bedroom 1

3.87m x 3.64m / 12'8" x 11'11"

Bedroom 2

3.95m x 2.59m / 12'11" x 8'6"

F/F = Fridge Freezer ST = Store W = Wardrobe



Three bedroom apartment

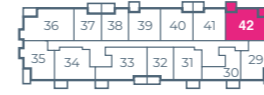
PLOTS 42, 56 & 70



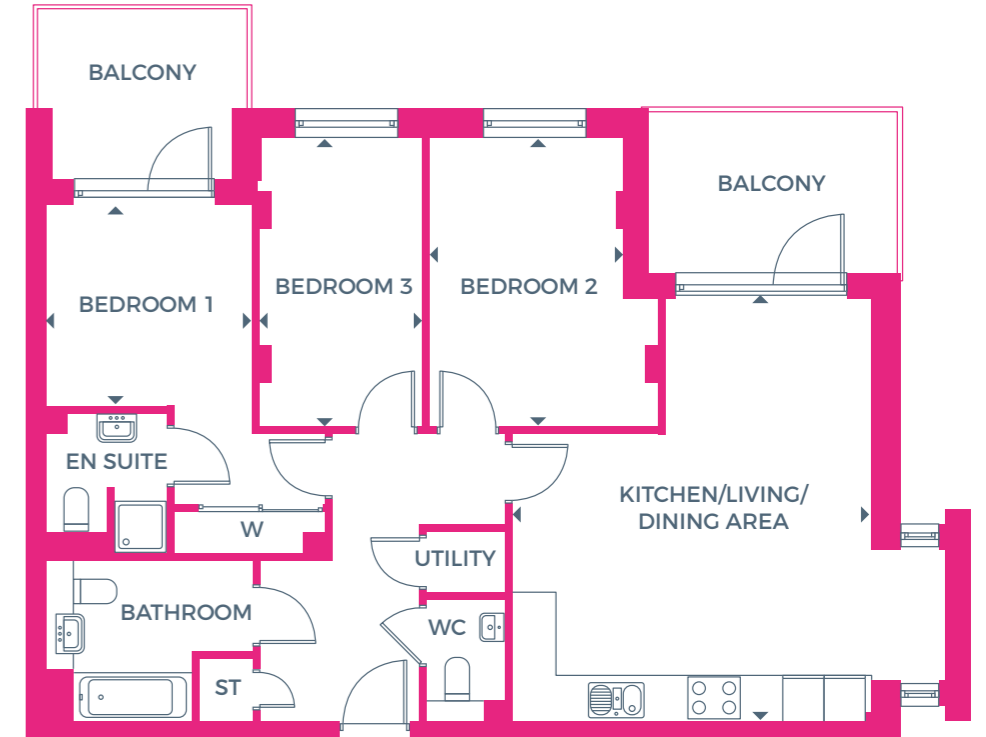
FIFTH FLOOR



FOURTH FLOOR



THIRD FLOOR



Gross Internal Area

88.7 sq m / 954 sq ft

Kitchen / Living / Dining Area

6.06m x 5.15m / 19'10" x 16'10"

Bedroom 1

2.96m x 2.89m / 9'8" x 9'5"

Bedroom 2

4.15m x 2.79m / 13'7" x 9'1"

Bedroom 3

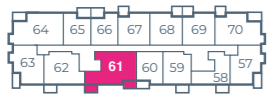
4.15m x 2.34m / 13'7" x 7'8"

F/F = Fridge Freezer ST = Store W = Wardrobe



Three bedroom apartment

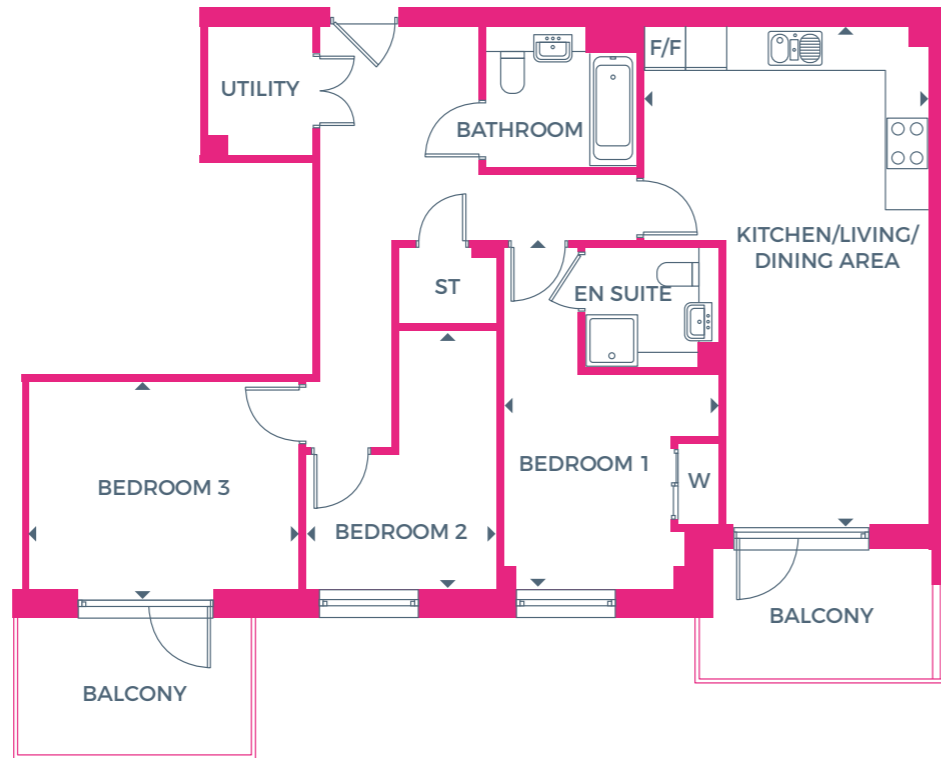
PLOTS 47 & 61



FIFTH FLOOR



FOURTH FLOOR



Gross Internal Area

88.6 sq m / 953 sq ft

Kitchen / Living / Dining Area
7.42m x 4.27m / 24'4" x 14'0"

Bedroom 1
5.08m x 3.20m / 16'8" x 10'6"

Bedroom 2
3.85m x 2.84m / 12'7" x 9'3"

Bedroom 3
4.04m x 3.09m / 13'3" x 10'1"

F/F = Fridge Freezer ST = Store W = Wardrobe

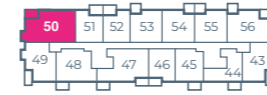


Three bedroom apartment

PLOTS 50 & 64



FIFTH FLOOR



FOURTH FLOOR



Gross Internal Area

101.8 sq m / 1,095 sq ft

Kitchen / Living / Dining Area
6.65m x 6.07m / 21'9" x 19'11"

Bedroom 1
4.47m x 3.23m / 14'8" x 10'7"

Bedroom 2
3.39m x 2.85m / 11'1" x 9'4"

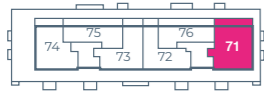
Bedroom 3
3.60m x 2.69m / 11'9" x 8'9"

F/F = Fridge Freezer ST = Store W = Wardrobe



Three bedroom apartment

PLOT 71



SIXTH FLOOR



Gross Internal Area

106 sq m / 1,141 sq ft

Kitchen / Living / Dining Area
6.65m x 5.49m / 21'9" x 18'0"

Bedroom 1
3.87m x 3.21m / 12'8" x 10'5"

Bedroom 2
3.89m x 3.21m / 12'9" x 10'6"

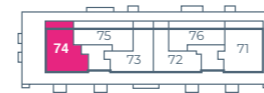
Bedroom 3
3.87m x 2.86m / 12'8" x 9'4"

F/F = Fridge Freezer ST = Store W = Wardrobe



Three bedroom apartment

PLOT 74



SIXTH FLOOR



Gross Internal Area

96.1 sq m / 1,034 sq ft

Kitchen / Living / Dining Area
6.98m x 5.33m / 22'9" x 17'5"

Bedroom 1
4.45m x 4.17m / 14'7" x 13'8"

Bedroom 2
3.89m x 3.56m / 12'9" x 11'8"

Bedroom 3
3.56m x 2.65m / 11'8" x 8'7"

F/F = Fridge Freezer ST = Store W = Wardrobe

Floorplans shown are indicative only. The kitchen layout and furniture positions are for indicative purposes only. All dimensions indicated are approximate and should not be relied upon for carpet sizes or items of furniture. The developer reserves the right to make changes to these plans prior to exchange of contracts. For exact plot specification, details of external and internal finishes, dimensions and floor plan differences, please speak to a member of our sales team for more details.

CATALYST

We are one of the UK's leading housing associations, a member of the G15 Group with over 21,000 homes in London and the South East. With a history of developing new homes stretching back over 50 years, we know what makes London and the Home Counties a great place to live.

As experts in creating new and stylish homes we understand that buying a property will be one of the most important decisions in your life and we are here to help you make the right choice. We pride ourselves as being the market leaders.



SHARED OWNERSHIP

Shared Ownership is a successful government-run initiative that enables you to buy a share of a new build property and pay a reduced rent on the remaining share. You will purchase the maximum share that you can afford, between 25%–75% of the full market value. The combined monthly cost of your rent and mortgage will usually be less than buying the property outright. You can proceed to buy further shares as and when your circumstances permit, this process is known as 'staircasing'.

AM I ELIGIBLE?

- Your household income must not exceed £90,000 per annum.
- You must not already own a home or be on the deeds of another property at the point of exchange.

Please contact our sales team for more information on Shared Ownership.



Burnt Oak Broadway, Edgware, HA8
020 8168 0404
Neonbycatalyst.co.uk

