

# WHY YOU SHOULD MOVE *to No.19 High Street Wealdstone*



Looking for a slice of life in Harrow? Here we reveal everything you need to know about this highly desirable development and the surrounding area.

Tired of renting in the capital and want to put your stamp on your own pad? Renting in London can mean forking out thousands for poky places with zero character. Which is why we've got a collection of just six shared ownership apartments at No<sup>19</sup> High Street Wealdstone, in the heart of Harrow.

Inside, it's all about combining a genuine eye for design with real substance - think bespoke layouts, high-quality flooring, plenty of light and neutral colour palettes.

Kitchens are high-spec with integrated appliances and sleek worktops that will compel you to sharpen up your present cooking skills.

Contemporary bathrooms and en-suites, meanwhile, are the perfect evidence this new development has mastered luxury modern living with heated towel rails, mirror cabinets with LED lighting and plush fittings. And it's all the little extras that'll be head-turners: private balconies for sundowners? Check. Bike store? Check. Lifts to all floors? Check. Trust us - these new apartments are little havens in this popular part of town. Which is what it's all about, right?

# LIVING IN HARROW

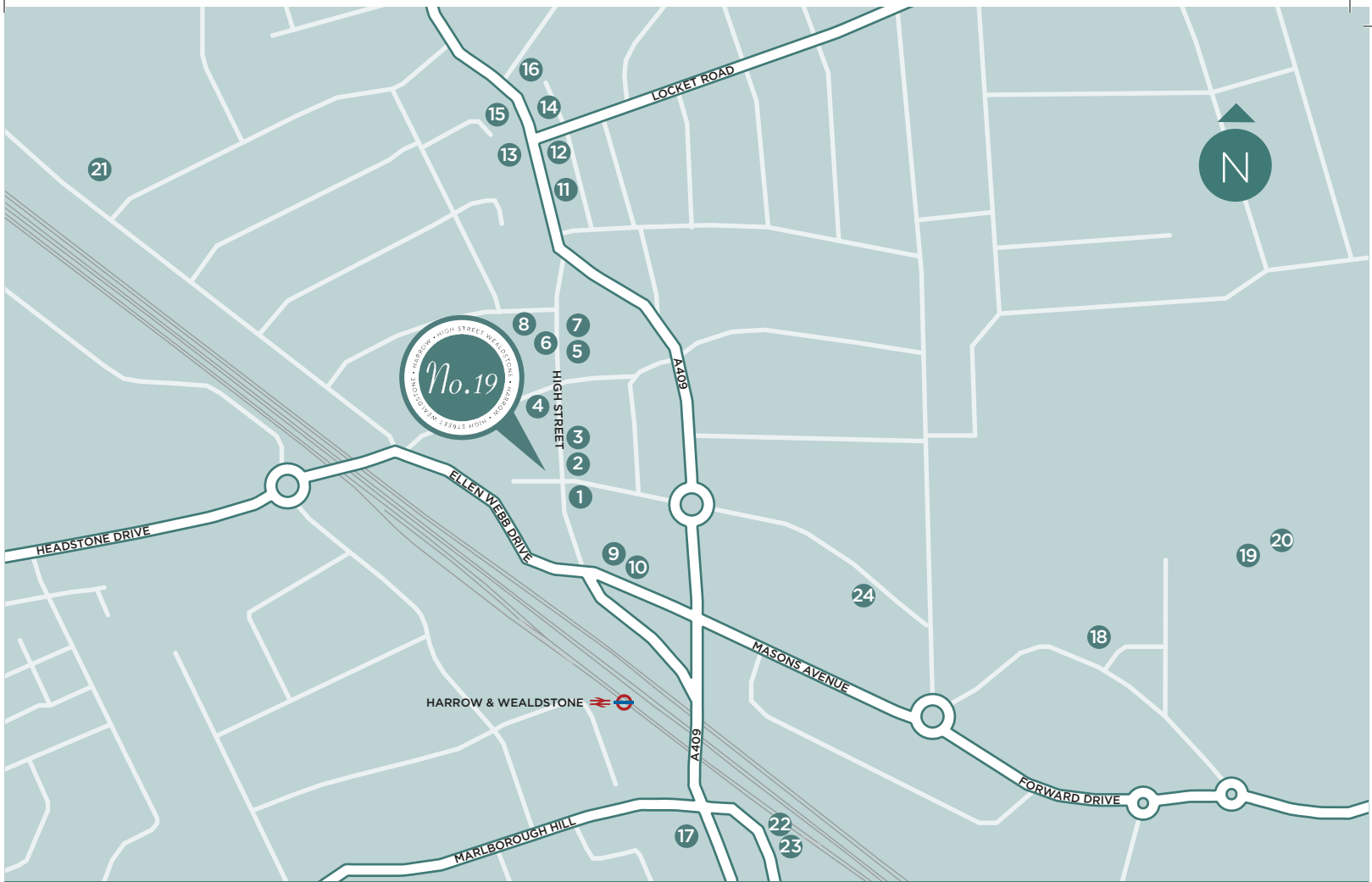
Life here moves to a mellow beat, a far cry from the electrifying pace of central London. But that's exactly why Harrow is such a desirable area – you've got the best city living just 20 minutes away, but the sedate, contented vibe of a borough that's all about the good life.

However, if you want to find fun and lively spots, there are plenty to pick from – and like any self-respecting London borough, its restaurants and bars are invariably on the cusp of reinvention and a guaranteed good meal is always on the cards. Whether you're looking for the latest hipster café, exceptional Indian street food, or that splash-out spot dishing up terrific food in a spectacular setting – its foodie scene covers all bases.

On your doorstep, you'll find handy shops, cafes, canals and sports clubs. And when all you want is a bit of green space to jog in or flatten down a picnic rug, Harrow is

scattered with some envy-inducing parks, from Canons Park with its immaculate gardens and playground, to Bentley Priors that wraps around its namesake stately home with atmospheric woodlands and a nature reserve for sultry afternoon exploring. Year-round, the area has an eclectic calendar of events with fairs, sunblushed festivals and artisan markets where you can pick up fantastic local produce and a bunch of thoughtfully designed handicrafts. Couple that with great shopping, excellent sports facilities and leading schools and you can see why a move to Harrow is always going to be a wise decision.





### RETAIL

- 1 Sainsbury's Local
- 2 Supermarket
- 6 ASDA Supermarket
- 7 Boots
- 13 Iceland Foods

### LEISURE

- 8 The Gym London
- 18 Harrow Leisure Centre
- 19 Harrow Skatepark

### RESTAURANTS/ BARS/PUBS

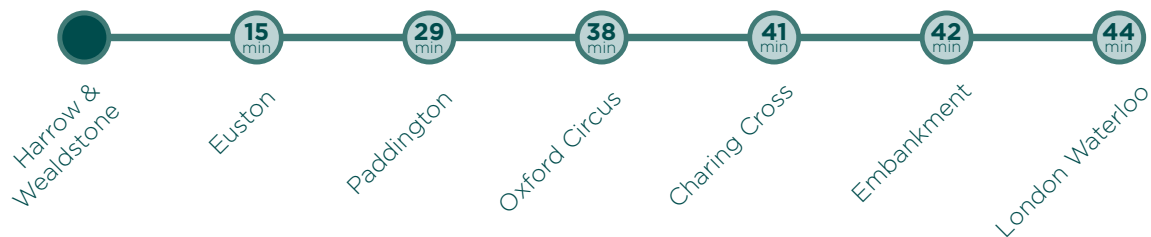
- 3 Meeting Palace
- 4 Subway
- 5 Wenzel's the Bakers
- 9 Taste of Asia
- 12 Costa
- 11 Daly's bar
- 14 Pizza Chalet
- 15 The Shanakee
- 16 Brothers Cafe

### SCHOOLS

- 10 ADC College London
- 17 Happy Days Nursery
- 20 Harrow School of Gymnastics
- 21 Whitefriars Community School
- 22 St Xaviers College
- 23 Belgravia College
- 24 Queensbury School of Education

## AND TRANSPORT LINKS?

Harrow has superb links in and around London. The development is just a two-minute walk from Harrow & Wealdstone station, served by London Overground and London Underground Bakerloo line services, whisking you into the centre of the city in around 20 minutes – so yes, you do have time to grab a coffee and catch up on emails before arriving at your desk. And when you want to escape the clamour of London for the weekend to Brighton's hedonistic corners and pebble beach, or for a UK city break, London Northwestern Railway and Southern also operate from Harrow & Wealdstone and can drop you at destinations across the country.



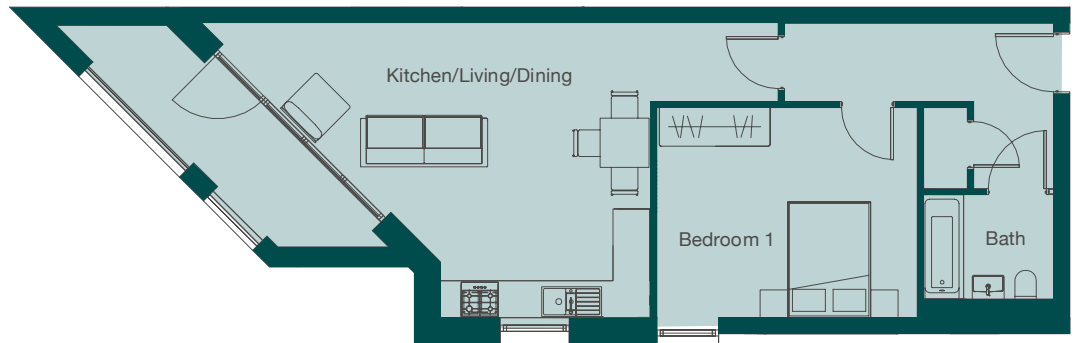
Travel times are approximate. Source: tfl.gov.uk

# ONE BEDROOM

Apartments 15 | 19 | 23  
L1 L2 L3

Internal area: 53m<sup>2</sup> - 570ft<sup>2</sup>

Kitchen/Living/Dining	6.2m	x	4.7m	20'4"	x	15'5"
Bedroom 1	4.2m	x	3.4m	13'9"	x	11'1"
Bathroom	2.1m	x	1.8m	6'10"	x	5'10"

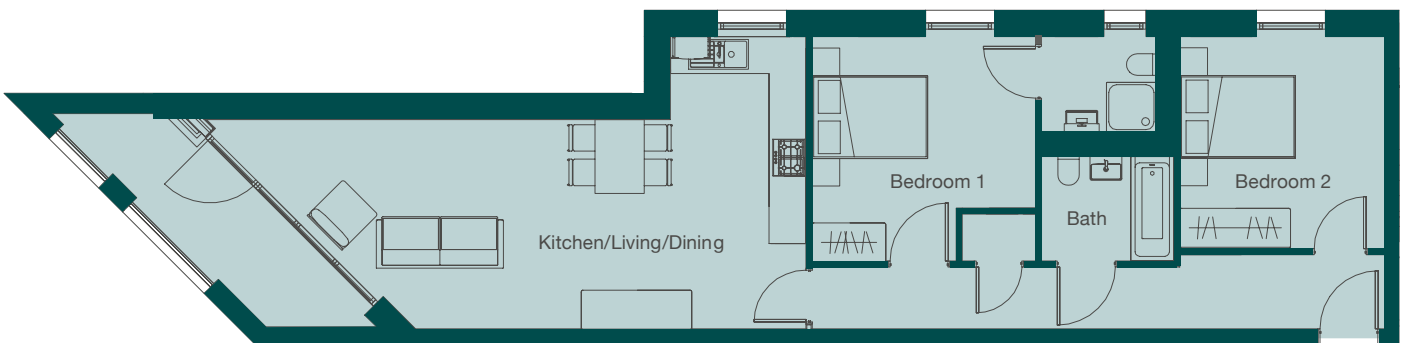


# TWO BEDROOMS

Apartments 16 | 20 | 24  
L1 L2 L3

Internal area: 72m<sup>2</sup> - 775ft<sup>2</sup>

Kitchen/Living/Dining	7.9m	x	4.7m	25'11"	x	15'5"
Bedroom 1	3.6m	x	3.6m	11'9"	x	11'9"
Bedroom 2	3.4m	x	3.3m	11'2"	x	10'9"
Bathroom	2.2m	x	1.8m	7'2"	x	5'10"



# SPECIFICATION

Intelligently designed

## KITCHEN

- Individually designed German kitchens
- Slim-line grey laminate worktops by Beeck
- Gloss handleless units by Beeck with built-in recycling facilities
- Stainless steel sink with chrome mixer tap
- Back-painted Pilkington glass splashback
- Fully integrated frost-free fridge freezer
- Bosch built-in 4 ring gas hob
- Bosch built-in oven
- Black glass angled extractor hood
- Bosch fully integrated dishwasher
- Bosch washer-dryer
- Heat, smoke and carbon monoxide detectors
- Recessed LED ceiling downlights
- High-quality brushed cotton oak flooring

## BATHROOM

- Villeroy & Boch floor-standing toilets with concealed cistern
- Villeroy & Boch basins with Hansgrohe chrome mixer tap
- Fitted Villeroy & Boch vanity units
- Thermostatically controlled
- Hansgrohe showers
- Kaldewei enamelled steel baths with Hansgrohe chrome mixer taps and glass screen
- White shower trays with sliding shower door (to all en-suites)
- Elegant Porcelanosa tiles on bathroom walls and floors

- Heated towel rails
- Mirror cabinet with LED light & shaver point
- Chrome toilet roll holder, towel ring & robe hook
- Joinery

## SECURITY

- Touch screen video door entry system with colour monitor to each apartment
- CCTV in Ground Floor external areas and building entrance lobbies, bike store and pedestrian access points

## COMMUNAL AREAS

- Lifts to all floors
- External lighting
- General
- Double glazed windows and doors
- Private balcony to each apartment
- Satin steel ironmongery

## OTHER

- Electrical and Cable LED downlights to Living/Kitchen/Dining
- Living areas feature skirtings & architraves in egg shell white
- High-quality flooring
- Pendant lighting in hallways and bedrooms
- Wired for TV, satellite (Sky Q and Virgin)



Images are of a previous Origin development

# Who are Origin Housing?

Origin Housing create exceptional new homes in London and the Home counties.

---

Dedicated to investing in cutting edge architecture and impressive interior specification, Origin Housing offer outstanding customer service throughout the sales process and beyond. We focus on delivering homes in sought after areas, from buzzing city locations to leafy affluent villages.

For more information:

Call: **0300 323 0325**

Email: **[sales@originhousing.co.uk](mailto:sales@originhousing.co.uk)**

Click: **[highstreetwealdstone.co.uk](http://highstreetwealdstone.co.uk)**



**@OriginNewHomes**



**@OriginNewHomes**



**@OriginNewHomes**

The specification is indicative of style and may be subject to change at the construction of the development. Figures are based on the longest measurements in each room. These matters should be verified by any prospective buyer at the time of purchase. All information supplied within this brochure may vary and therefore does not form any part of any contract. Images have been used to present the development and assumes that a reasonable amount of time has lapsed to allow for landscaping and foliage to mature. All photographs are indicative of style only and not representative of actual specification. Images are from a previous Origin Housing development. May 2019.