



# THE POMEROY

SE14

**1, 2 & 3 bedroom homes**

Private Sale and Shared Ownership



# A fresh approach to New Cross living

*The Pomeroy offers a tempting collection of 47 contemporary 1, 2 and 3 bedroom apartments, duplexes and 3 bedroom houses.*

Homes have well-conceived layouts with quality finishes throughout and are neutrally decorated so you can style your home to your own taste.

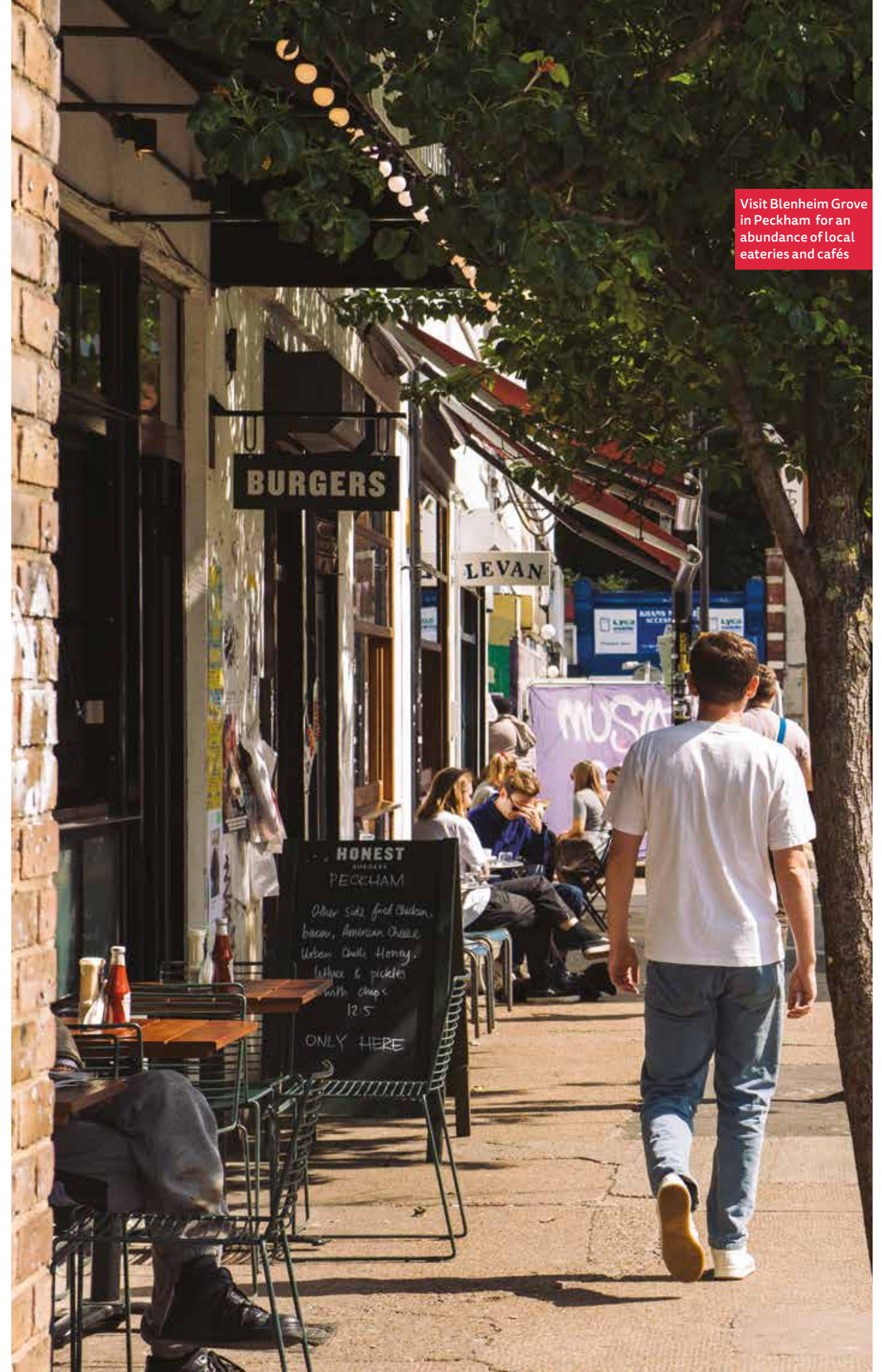
With its excellent zone 2 location, convenient connections to central London and abundance of green spaces nearby, The Pomeroy is the perfect place to put down roots.

# Where urban cool meets village-like charm

The Pomeroy's vibrant south-east London location is on the threshold of some of the city's trendiest hotspots attracting a young and fashionable crowd. Peckham, with its abundance of artisan cafés and rooftop bars, is close by, as is Nunhead – a local hidden gem offering great places to eat and drink – and Brockley with its arty vibe and ever-popular award-winning food market.

Located in zone 2 with quick journey times into central London and beyond, this is an area that feels city-connected but that has carved out an identity of its own – successfully combining urban cool with a village-like charm. There are plenty of green spaces to enjoy the great outdoors, from Peckham Rye Park to Burgess Park. Greenwich is nearby offering a gateway to the River and the awe-inspiring Greenwich Park.

Visit Blenheim Grove in Peckham for an abundance of local eateries and cafés







Communal courtyard area and terraces at The Pomeroy





**Pubs & Bars**

- 01 Frank's Café
- 02 John the Unicorn
- 03 Peckham Springs
- 04 The Rose Pub & Kitchen
- 05 Royal Albert
- 06 The Fat Walrus
- 07 Beer Rebellion
- 08 The New Cross House



**Restaurants & Eateries**

- 09 Bánh Bính
- 10 Coal Rooms
- 11 Fat Slice
- 12 Ganapati
- 13 Miss Tapas
- 14 The Begging Bowl
- 15 The Rosemary Organic Hungarian Restaurant



**Parks & Green Spaces**

- 16 Bridgehouse Meadows
- 17 Brimington Park
- 18 Burgess Park
- 19 Hatcham Gardens
- 20 Peckham Rye Park
- 21 Telegraph Hill
- 22 New Cross Gate Cutting



**Schools & Universities**

- 23 Edmund Waller Primary School
- 24 Goldsmiths University of London
- 25 John Donne Primary School
- 26 Kender Primary School
- 27 Pilgrims Way Primary School
- 28 St.Thomas the Apostle School and Sixth Form College



**Cafés**

- 29 Birdie Num Nums
- 30 Blackbird Bakery
- 31 Chinwag Café
- 32 Petitou
- 33 Old Spike Roastery
- 34 Out of the Brew
- 35 Queens Coffee Bar



**Entertainment & Leisure**

- 36 Amersham Arms
- 37 The Gym
- 38 The CLF Art Café
- 39 Four Quarters
- 40 Goldsmiths Centre for Contemporary Art
- 41 Peckham Library
- 42 Peckhamplex Cinema
- 43 Peckham Levels



**Groceries**

- 44 Aldi
- 45 Asda
- 46 Ayres Bakery
- 47 Peckham Fruit & Veg Market
- 48 Sainsbury's
- 49 Telegraph Hill Farmers' Market
- 50 Tesco Express



**Shopping**

- 51 ALKEMI Store
- 52 Bumbani Wine & Grocery
- 53 BYO: Plastic Free Shop
- 54 SeaBass Cycles
- 55 The Flower Shop
- 56 The Word Bookshop
- 57 Deptford Market Yard



# A slice of life

*When you're living at The Pomeroy the question isn't so much what should you do today, but rather how can you fit it all in.*

From great places to eat and hang-out to one-off cultural destinations, this is an area that has so much to offer that you really are spoilt for choice.

Soak up the local bohemian vibe and visit an exhibition at either the Goldsmiths Centre for Contemporary Art or Lewisham Arthouse. Catch a film at the independent Peckhamplex cinema where all tickets are priced at under five pounds or visit the Peckham Library in its award-winning building.



Birdie Num Nums - New Cross





The Fat Walrus

Enjoy a glass of IPA from local brewer Brick Brewery at The Copper Tap on Peckham High Street, browse the array of trendy independent boutiques in Bellenden Road where the pavement is lined with Antony Gormley-sculptured bollards, and finish with a delicious meal at The Rose Pub & Kitchen on New Cross Road.

The weekly Brockley Market features a host of local producers selling everything from freshly baked sourdough to raw dairy products and freshly caught fish. And for regular annual treats, there is the two-week-long Telegraph Hill Festival that celebrates the arts, and the popular music festival, Jam on Rye, in Peckham Rye Park.



The Fat Walrus



Fat Slice Pizza - New Cross



BYO



Peckham Fruit & Veg Market



Brick House Bakery & Bar



BYO



The Flower Shop



ALKEMI - Nunhead



A perfectly brewed coffee



Peckham Library



A freshly prepared cocktail at Bánh Bính





## Your five-a-day

*Whether you're tempted by a quick but delicious bite to eat, the perfect flat white served with a large slice of cake on the side or somewhere to while away a few hours there are so many destinations to choose from.*

The following top-five selection gives a flavour of what's on offer.

1

### The Fat Walrus

Voted best pub in New Cross since 2016 by Time Out readers, this laid-back pub offers an American-inspired menu.

44 Lewisham Way  
thefatwalrus.com

2

### Peckham Levels

Popular community hub offering art, cocktail bars, street food and a yoga studio.

F1-F6 Peckham town centre car park  
peckhamlevels.org

3

### Bánh Bánh

A family-run business serving up authentic Vietnamese dishes.

46 Peckham Rye  
banhbanh.com

4

### Coal Rooms

Bar and restaurant where the menu of meat and fish is cooked over a bespoke charcoal grill and oven.

11a Station Way, Peckham Rye Station  
coalroomspeckham.com

5

### Blackbird Bakery

Serving up freshly baked bread, pastries and cakes, an all-day brunch menu, sourdough pizzas and local coffee.

The Arches, Queens Road Peckham  
blackbirdbakerylondon.co.uk









# Locals in all their varieties

Meet some of the friendly faces you'll encounter as you explore the local area.



It's a great area. Buzzing with activity and lots of bars, cafés, pubs and galleries.

Ellie – New Cross Gate



Peckham encapsulates the spirit of 'culture'. It's home to so many studio spaces for young and emerging creatives, ranging from artists to independent traders. Peckham is one of the best hubs for fresh talent and the arts!

Vi – Peckham





Space  
to grow

Enjoy an active lifestyle – Burgess Park



# Park life

*There's little need to seek out open spaces beyond London when you live in an area this lush and green.*

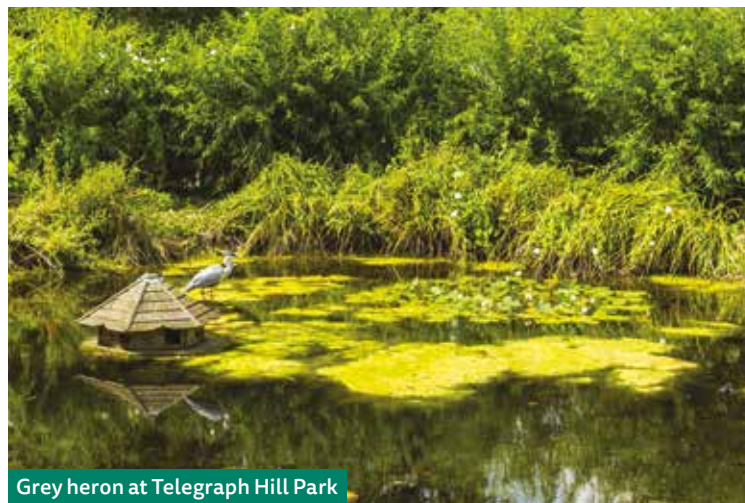
From small tucked away neighbourhood commons to a large Royal park there are plenty of places to escape the daily hustle and bustle and enjoy wide open spaces and lots of fresh air.

Telegraph Hill Upper Park offers scenic hilltop views of the city and a popular skate park while Peckham Rye Park features woodland, meandering streams and a Japanese garden. The Chumleigh Gardens at the heart of Burgess Park is a renowned world garden showcasing English, Mediterranean, Asian, Oriental and Caribbean planting and of course there is Greenwich Park overlooking the River Thames, famous for its herd of red and fallow deer and Royal Observatory.

Closer to home, Hatcham Gardens is on your doorstep offering a tranquil place to enjoy a moment's peace in the open air with just your thoughts or a book for company.



Peckham Rye Park

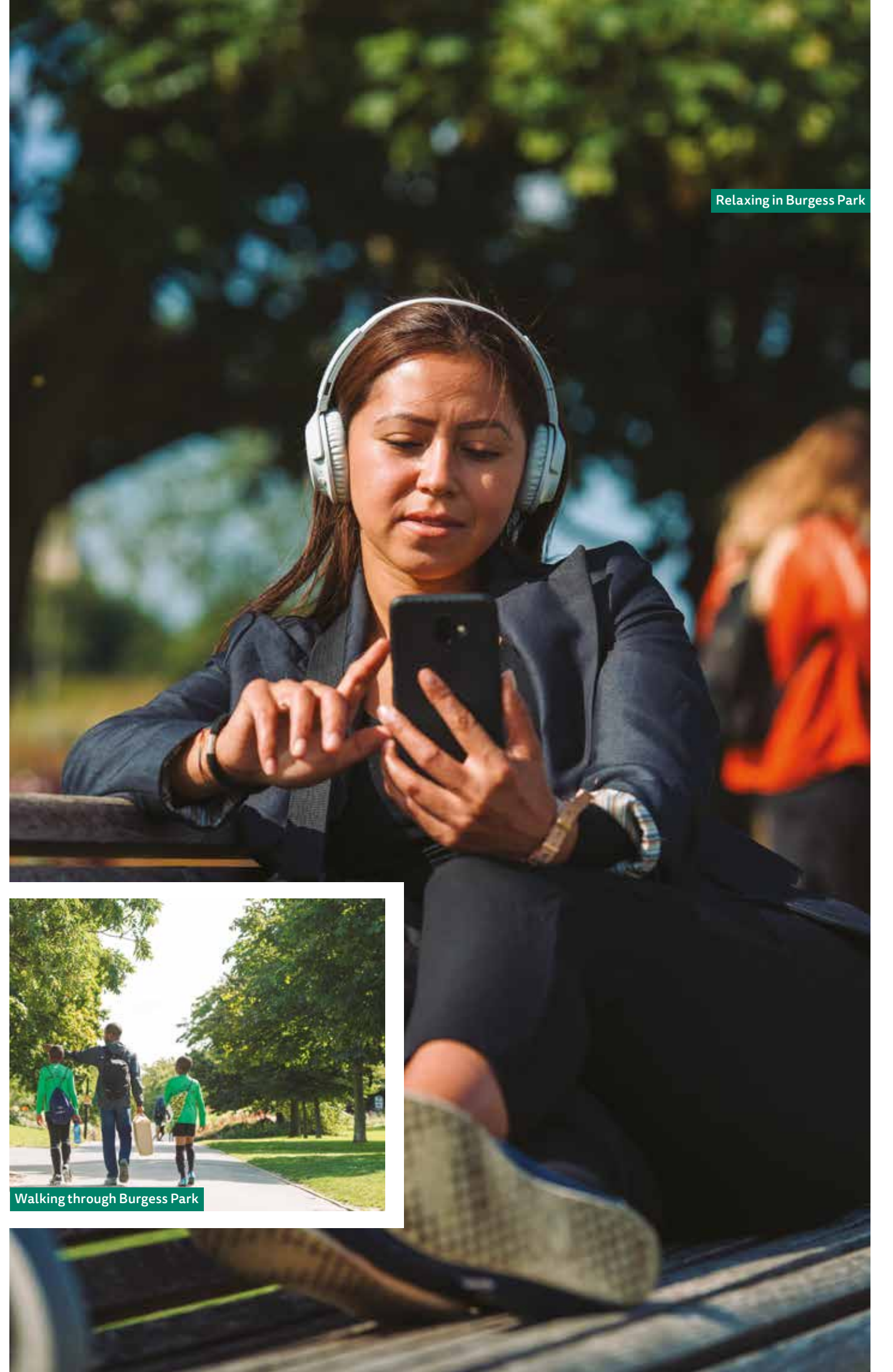


Grey heron at Telegraph Hill Park



Walking through Burgess Park

Relaxing in Burgess Park







## Pip it to the post

*Living in a zone 2 location is a gift, with quick and easy connections into central London, west London and the City's financial heart making this an ideal place to set up home.*

The Pomeroy is located close to both Queens Road Peckham and New Cross Gate London Overground stations. While both stations provide links through east London and onto north London, the former station has access to the western branch of the line to Shepherd's Bush and beyond, while the latter station offers the link south to Crystal Palace and West Croydon.

The Docklands Light Railway is easily accessible, as is the Jubilee line, allowing a quick commute to Canary Wharf and the City.

The proposed Bakerloo line extension will run from Elephant & Castle further increasing commuting options.

Local bus routes are plentiful and lots of cycle routes makes getting around on two wheels a convenient travel option.





# Branching out



- 9 mins New Cross Gate Station
- 12 mins New Cross
- 17 mins Peckham Rye Station
- 19 mins Camberwell
- 22 mins Brockley
- 24 mins Lewisham Shopping Centre
- 24 mins Elephant & Castle
- 28 mins Southwark
- 30 mins Deptford



- 17 mins Canada Water
- 22 mins London Bridge
- 30 mins Canary Wharf
- 30 mins Shoreditch
- 35 mins Oxford Circus
- 35 mins Victoria
- 35 mins Euston
- 38 mins Marylebone
- 39 mins King's Cross St Pancras
- 40 mins Westfield Stratford City Shopping Centre



- 4 mins New Cross Gate Station
- 5 mins Telegraph Hill Market
- 5 mins Peckham High Street
- 5 mins Nunhead
- 5 mins Peckham Library
- 9 mins Deptford Station



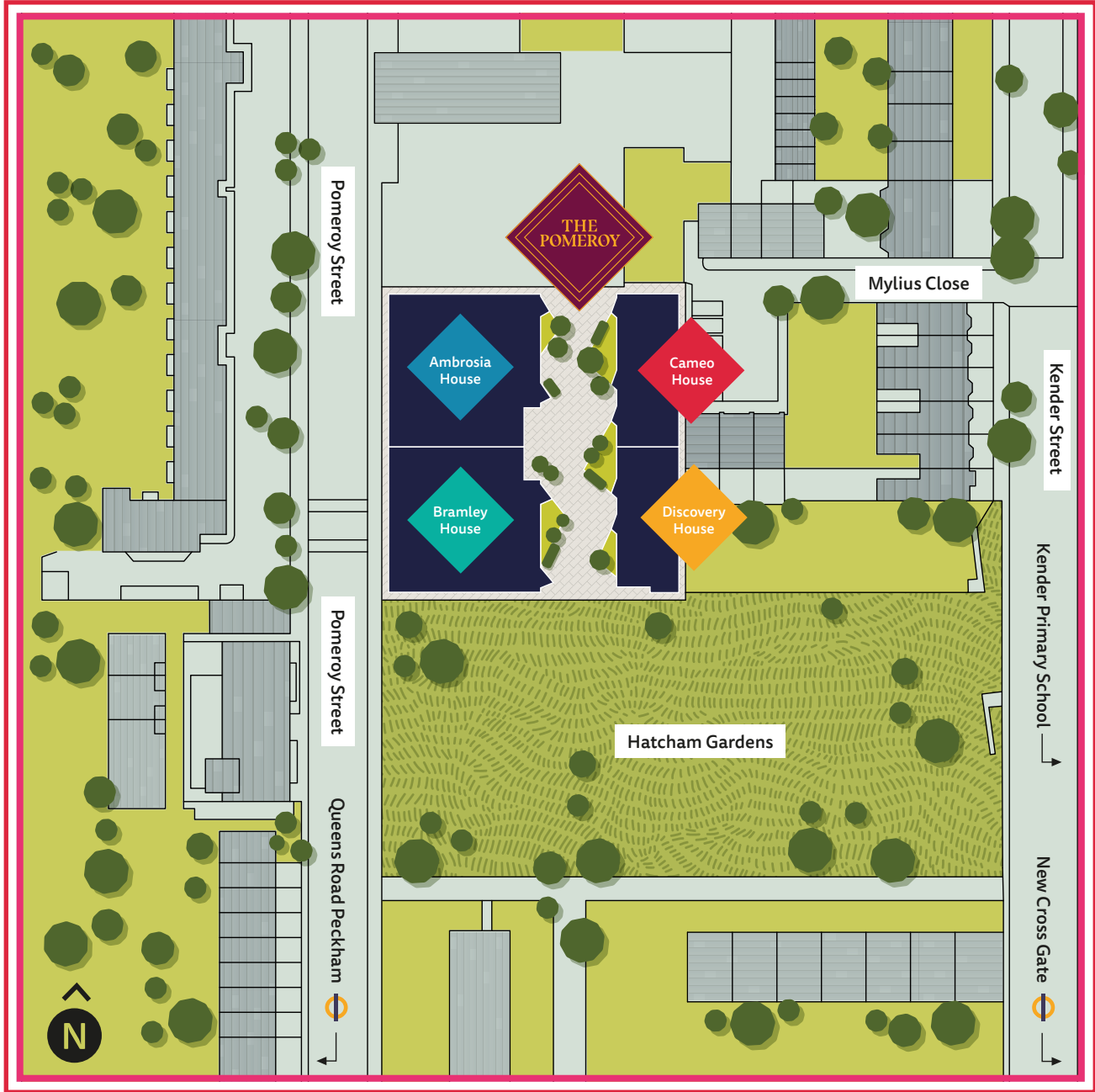
- 1 min Hatcham Gardens
- 4 mins Pomeroy Street Bus Stop (QJ)
- 8 mins Tesco Express
- 8 mins Queens Road Peckham Station
- 8 mins Blackbird Bakery
- 9 mins Beer Rebellion
- 13 mins New Cross Gate

\*Journey times from the development are approximate and sourced from Google Maps.

# A rosy place to live

Choose your favourite from the mix of contemporary designed 1, 2 and 3 bedroom homes available at The Pomeroy.

All apartments feature a balcony, and mews houses and duplexes each have their own garden. The Pomeroy connects to adjacent Hatcham Gardens extending the sense of green space and access to the outdoors.



Map not to scale.









3 bedroom house – bedroom

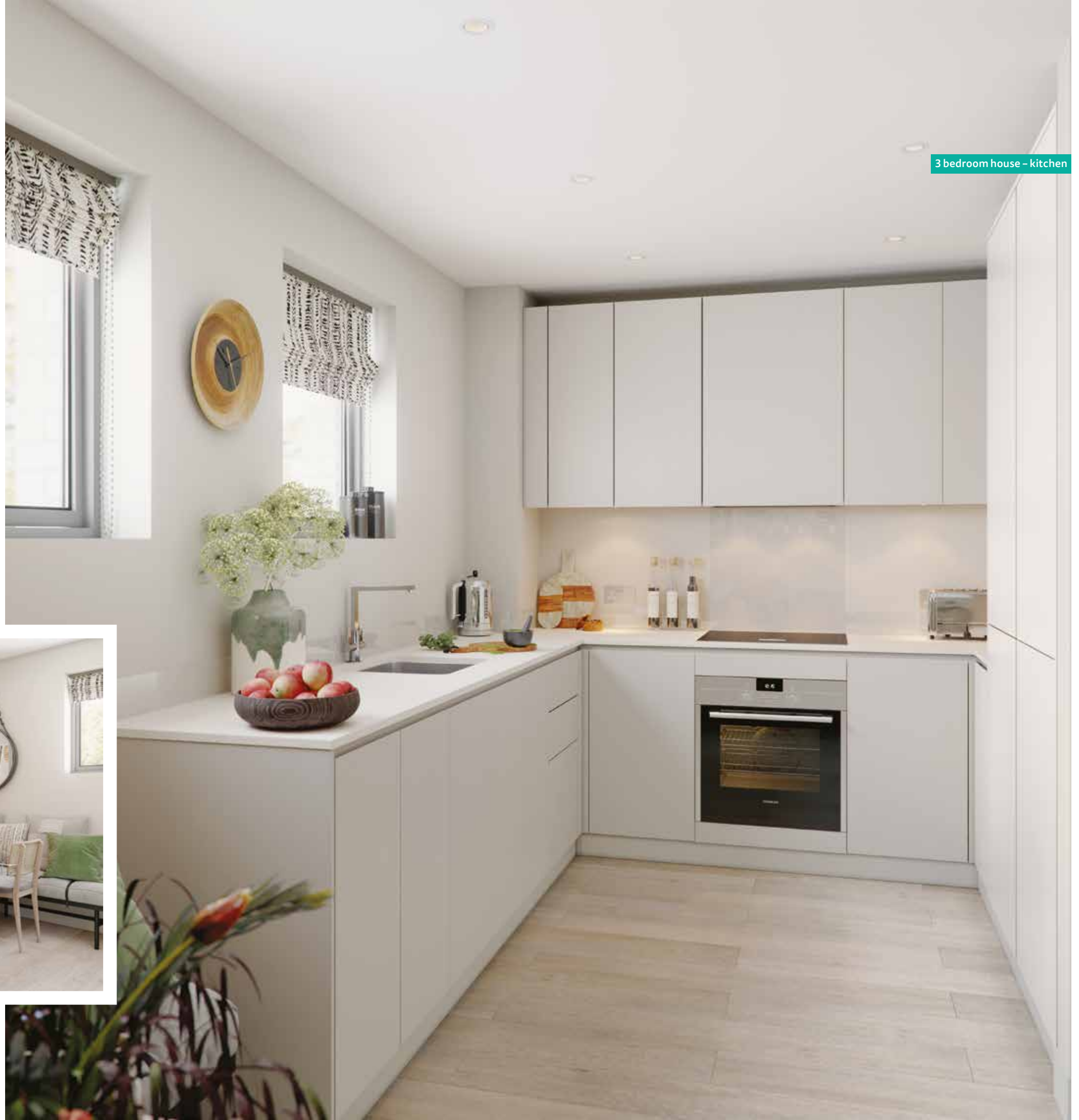
# A new twist on urban living

Your new home at The Pomeroy is perfectly suited to contemporary urban living, designed to maximise natural light and with inspired layouts to make the best use of internal space.





3 bedroom house – dining area



3 bedroom house – kitchen







# Refreshingly stylish interiors

*Living is easy in these  
contemporary-designed  
high-quality homes*



## Kitchen

- Contemporary kitchen by Symphony (New York range) Matte, handleless kitchen units in Cashmere colour
- Soft close to doors and drawers
- Silestone worktops in White Storm with white glass splashback
- Stainless steel mixer tap and single bowl sink
- Integrated Zanussi electric hob, cooker hood, fan assisted oven, fridge freezer and dishwasher

## Main Bathroom

- White sanitaryware with single lever chrome basin taps and shower attachments by Hansgrohe
- Bath with shower over and glass screen
- Heated chrome towel rail
- Matt grey porcelain wall and floor tiles

## En-suite

- White sanitaryware with chrome taps and shower attachments by Hansgrohe
- Shower cubicle with Raindance shower head
- Low profile shower tray with glass bi-fold door
- Heated chrome towel rail
- Matt grey porcelain wall and floor tiles

## Decorative finishes

- Walls painted in white emulsion throughout
- Joinery painted in white satin throughout

## Floor finishes

- Carpet in Silverstone to bedrooms, landing and stairs
- Vinyl flooring in Silk Light Oak to living room, hallways and kitchen
- Matt grey porcelain tiles on floors and walls of bathroom, toilet and shower room

## Electrical

- White downlighters to kitchen and bathroom
- Above-mirror light in bathroom

## Security & Peace of Mind

- Video entry system to apartments
- Wired heat and smoke detectors
- Multi-lock door and spy hole to home entrance
- 10 year Premier warranty
- Predicted energy assessment – EPC band B

## Main Bedroom

- Oaklands collection carpet in Silverstone
- Built-in wardrobe with sliding mirrored doors to master bedrooms

## Utility & Electricals

- Electricity usage smart meter to hallway cupboard
- Television points with Sky+ provisions to living room
- Landline telephone and BT data points to living room
- Beko 6kg washing machine

Whilst every effort has been taken to ensure the accuracy of the information provided, the specification has been supplied as a guide and Peabody reserves the right to amend the specification as necessary and without notice.

3 bedroom house – bathroom

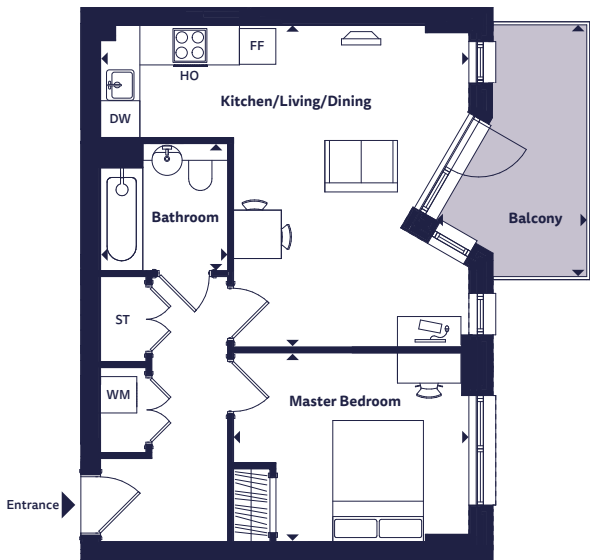


Computer generated image for illustrative purposes only.



# 1 bedroom apartment

Apartments 23, 36, 46, 54  
Bramley House



## Dimensions

Room	Metric	Imperial
Kitchen/Living/Dining	6.09m x 5.30m	20'0" x 17'5"
Master Bedroom	3.77m x 3.12m	12'5" x 10'3"
Bathroom	2.10m x 2.10m	6'11" x 6'11"
<b>Total Area</b>	<b>50.5 sq m</b>	<b>543.6 sq ft</b>
Balcony	4.16m x 2.49m	13'8" x 8'2"

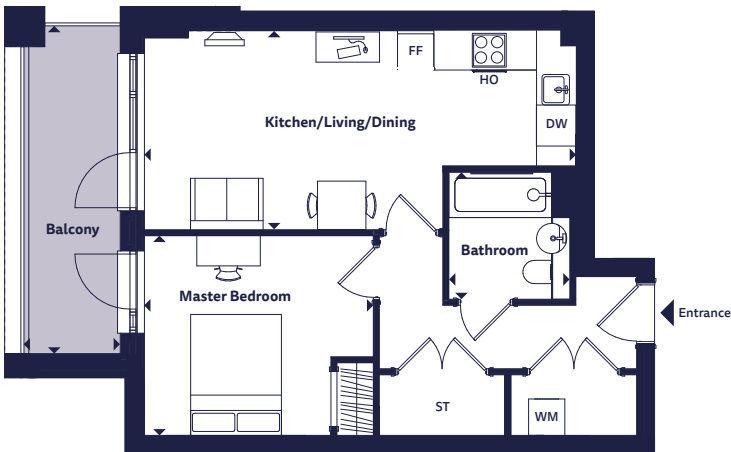
## Floorplan Key

<b>HO</b>	Hob & Oven	<b>FF</b>	Fridge Freezer
<b>DW</b>	Dishwasher	<b>ST</b>	Store
<b>WM</b>	Washing Machine		

Apartment, duplex and house layouts provide approximate measurements only. Dimensions, which are taken from the indicated points of measurement, are for guidance only and are not intended to be used for carpet sizes, appliance space or items of furniture. Apartment, duplex and house areas are provided as gross internal areas and may vary. Bathroom and kitchen layouts are indicative only and are subject to change. Wardrobe size and position may vary. All balcony dimensions and areas are approximate and may vary. The information contained within this document does not constitute part of any offer, contract or warranty. Whilst the plans have been prepared with all due care for the convenience of the intending purchaser, the information contained herein is a preliminary guide only.

# 1 bedroom apartment

Apartments 26, 39, 49, 57  
Bramley House



## Dimensions

Room	Metric	Imperial
Kitchen/Living/Dining	7.13m x 3.29m	23'5" x 10'10"
Master Bedroom	3.78m x 3.30m	12'5" x 10'10"
Bathroom	2.10m x 2.00m	6'11" x 6'7"
<b>Total Area</b>	<b>50.3 sq m</b>	<b>541.4 sq ft</b>
Balcony	5.42m x 1.59m	17'10" x 5'3"

## Floorplan Key

<b>HO</b>	Hob & Oven	<b>FF</b>	Fridge Freezer
<b>DW</b>	Dishwasher	<b>ST</b>	Store
<b>WM</b>	Washing Machine		

Apartment, duplex and house layouts provide approximate measurements only. Dimensions, which are taken from the indicated points of measurement, are for guidance only and are not intended to be used for carpet sizes, appliance space or items of furniture. Apartment, duplex and house areas are provided as gross internal areas and may vary. Bathroom and kitchen layouts are indicative only and are subject to change. Wardrobe size and position may vary. All balcony dimensions and areas are approximate and may vary. The information contained within this document does not constitute part of any offer, contract or warranty. Whilst the plans have been prepared with all due care for the convenience of the intending purchaser, the information contained herein is a preliminary guide only.



# 1 bedroom apartment

Apartment 27  
Cameo House



### Dimensions

Room	Metric	Imperial
Kitchen/Living/Dining	5.49m x 4.96m	18'0" x 16'4"
Master Bedroom	3.82m x 3.55m	12'6" x 11'8"
Bathroom	2.10m x 2.10m	6'11" x 6'11"
<b>Total Area</b>	<b>51.3 sq m</b>	<b>552.2 sq ft</b>
Terrace	11.48m x 2.94m	37'8" x 9'8"

### Floorplan Key

<b>H</b>	Hob	<b>TU</b>	Tall Unit
<b>O</b>	Oven	<b>FF</b>	Fridge Freezer
<b>DW</b>	Dishwasher	<b>ST</b>	Store
<b>WM</b>	Washing Machine		

Apartment, duplex and house layouts provide approximate measurements only. Dimensions, which are taken from the indicated points of measurement, are for guidance only and are not intended to be used for carpet sizes, appliance space or items of furniture. Apartment, duplex and house areas are provided as gross internal areas and may vary. Bathroom and kitchen layouts are indicative only and are subject to change. Wardrobe size and position may vary. All balcony dimensions and areas are approximate and may vary. The information contained within this document does not constitute part of any offer, contract or warranty. Whilst the plans have been prepared with all due care for the convenience of the intending purchaser, the information contained herein is a preliminary guide only.

# 1 bedroom apartment

Apartment 28  
Discovery House



### Dimensions

Room	Metric	Imperial
Kitchen/Living/Dining	6.56m x 5.49m	21'6" x 18'0"
Master Bedroom	3.82m x 3.51m	12'6" x 11'6"
Bathroom	2.10m x 2.10m	6'11" x 6'11"
<b>Total Area</b>	<b>58.3 sq m</b>	<b>627.6 sq ft</b>
Terrace	10.58m x 2.94m	34'9" x 9'8"

### Floorplan Key

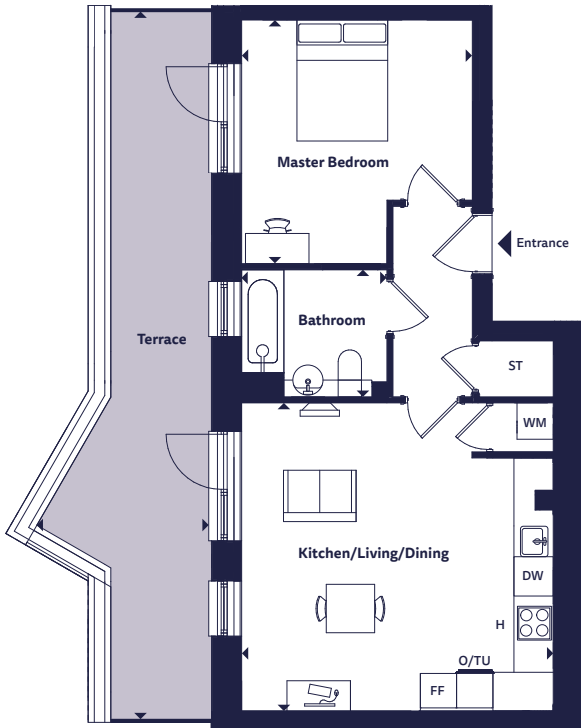
<b>H</b>	Hob	<b>TU</b>	Tall Unit
<b>O</b>	Oven	<b>FF</b>	Fridge Freezer
<b>DW</b>	Dishwasher	<b>ST</b>	Store
<b>WM</b>	Washing Machine		

Apartment, duplex and house layouts provide approximate measurements only. Dimensions, which are taken from the indicated points of measurement, are for guidance only and are not intended to be used for carpet sizes, appliance space or items of furniture. Apartment, duplex and house areas are provided as gross internal areas and may vary. Bathroom and kitchen layouts are indicative only and are subject to change. Wardrobe size and position may vary. All balcony dimensions and areas are approximate and may vary. The information contained within this document does not constitute part of any offer, contract or warranty. Whilst the plans have been prepared with all due care for the convenience of the intending purchaser, the information contained herein is a preliminary guide only.



# 1 bedroom apartment

Apartment 29  
Discovery House



## Dimensions

Room	Metric	Imperial
Kitchen/Living/Dining	5.15m x 5.09m	16'11" x 16'9"
Master Bedroom	4.03m x 3.82m	13'3" x 12'6"
Bathroom	2.40m x 2.10m	7'11" x 6'11"
<b>Total Area</b>	<b>51.2 sq m</b>	<b>551.1 sq ft</b>
Terrace	11.70m x 2.94m	38'5" x 9'8"

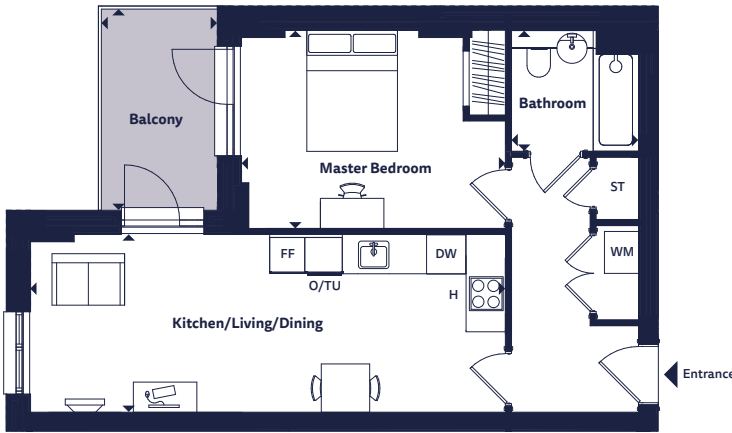
## Floorplan Key

<b>H</b>	Hob	<b>TU</b>	Tall Unit
<b>O</b>	Oven	<b>FF</b>	Fridge Freezer
<b>DW</b>	Dishwasher	<b>ST</b>	Store
<b>WM</b>	Washing Machine		

Apartment, duplex and house layouts provide approximate measurements only. Dimensions, which are taken from the indicated points of measurement, are for guidance only and are not intended to be used for carpet sizes, appliance space or items of furniture. Apartment, duplex and house areas are provided as gross internal areas and may vary. Bathroom and kitchen layouts are indicative only and are subject to change. Wardrobe size and position may vary. All balcony dimensions and areas are approximate and may vary. The information contained within this document does not constitute part of any offer, contract or warranty. Whilst the plans have been prepared with all due care for the convenience of the intending purchaser, the information contained herein is a preliminary guide only.

# 1 bedroom apartment

Apartment 50  
Ambrosia House



## Dimensions

Room	Metric	Imperial
Kitchen/Living/Dining	7.85m x 2.94m	25'9" x 9'8"
Master Bedroom	4.36m x 3.28m	14'4" x 10'9"
Bathroom	2.10m x 2.10m	6'11" x 6'11"
<b>Total Area</b>	<b>51.7 sq m</b>	<b>556.5 sq ft</b>
Balcony	3.33m x 1.92m	10'11" x 6'4"

## Floorplan Key

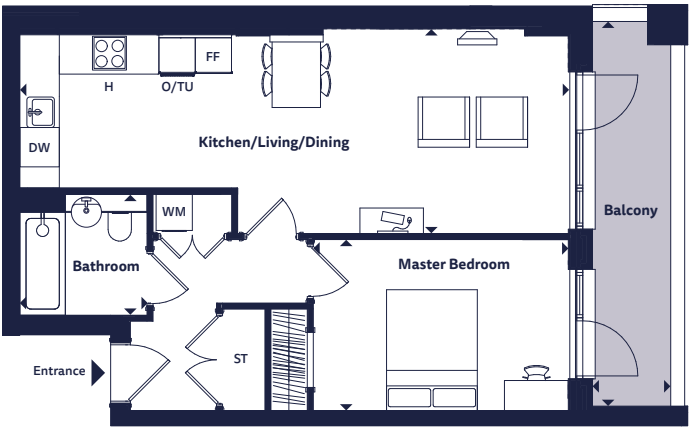
<b>H</b>	Hob	<b>TU</b>	Tall Unit
<b>O</b>	Oven	<b>FF</b>	Fridge Freezer
<b>DW</b>	Dishwasher	<b>ST</b>	Store
<b>WM</b>	Washing Machine		

Apartment, duplex and house layouts provide approximate measurements only. Dimensions, which are taken from the indicated points of measurement, are for guidance only and are not intended to be used for carpet sizes, appliance space or items of furniture. Apartment, duplex and house areas are provided as gross internal areas and may vary. Bathroom and kitchen layouts are indicative only and are subject to change. Wardrobe size and position may vary. All balcony dimensions and areas are approximate and may vary. The information contained within this document does not constitute part of any offer, contract or warranty. Whilst the plans have been prepared with all due care for the convenience of the intending purchaser, the information contained herein is a preliminary guide only.



# 1 bedroom apartment

Apartment 51  
Ambrosia House



### Dimensions

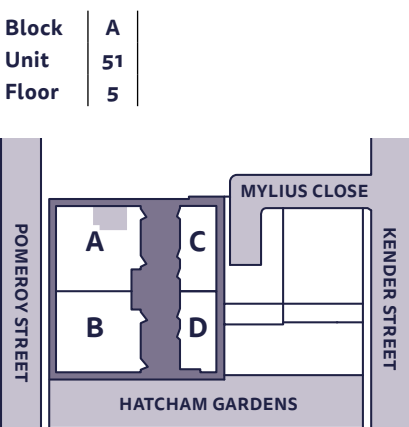
Room	Metric	Imperial
Kitchen/Living/Dining	9.07m x 3.39m	29'9" x 11'2"
Master Bedroom	4.22m x 2.83m	13'10" x 9'4"
Bathroom	2.10m x 2.00m	6'11" x 6'7"
<b>Total Area</b>	<b>54.3 sq m</b>	<b>584.5 sq ft</b>
Balcony	6.36m x 1.30m	20'11" x 4'3"

### Floorplan Key

<b>H</b>	Hob	<b>TU</b>	Tall Unit
<b>O</b>	Oven	<b>FF</b>	Fridge Freezer
<b>DW</b>	Dishwasher	<b>ST</b>	Store
<b>WM</b>	Washing Machine		

Apartment, duplex and house layouts provide approximate measurements only. Dimensions, which are taken from the indicated points of measurement, are for guidance only and are not intended to be used for carpet sizes, appliance space or items of furniture. Apartment, duplex and house areas are provided as gross internal areas and may vary. Bathroom and kitchen layouts are indicative only and are subject to change. Wardrobe size and position may vary. All balcony dimensions and areas are approximate and may vary. The information contained within this document does not constitute part of any offer, contract or warranty. Whilst the plans have been prepared with all due care for the convenience of the intending purchaser, the information contained herein is a preliminary guide only.

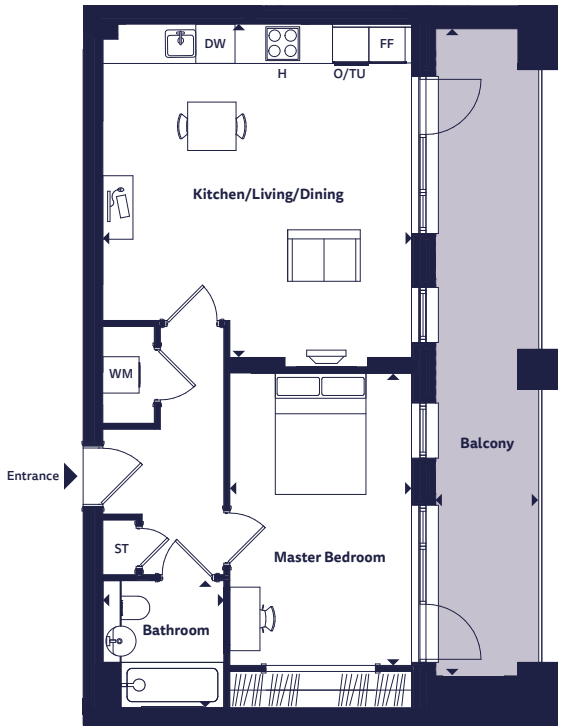
### Floor Locator



These plans are to be used as a guide only to the apartment types available.

# 1 bedroom apartment

Apartments 53, 61  
Bramley House



### Dimensions

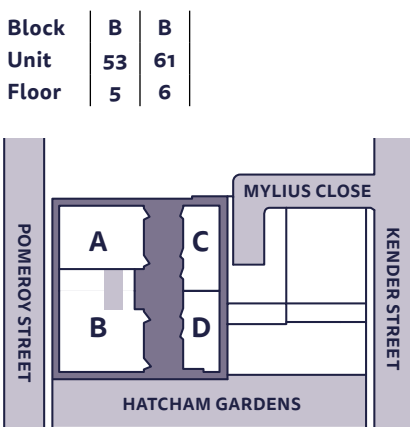
Room	Metric	Imperial
Kitchen/Living/Dining	5.49m x 5.10m	18'0" x 16'9"
Master Bedroom	4.83m x 3.00m	15'11" x 9'10"
Bathroom	2.10m x 2.00m	6'11" x 6'7"
<b>Total Area</b>	<b>57.6 sq m</b>	<b>620.0 sq ft</b>
Balcony	10.70m x 1.71m	35'1" x 5'7"

### Floorplan Key

<b>H</b>	Hob	<b>TU</b>	Tall Unit
<b>O</b>	Oven	<b>FF</b>	Fridge Freezer
<b>DW</b>	Dishwasher	<b>ST</b>	Store
<b>WM</b>	Washing Machine		

Apartment, duplex and house layouts provide approximate measurements only. Dimensions, which are taken from the indicated points of measurement, are for guidance only and are not intended to be used for carpet sizes, appliance space or items of furniture. Apartment, duplex and house areas are provided as gross internal areas and may vary. Bathroom and kitchen layouts are indicative only and are subject to change. Wardrobe size and position may vary. All balcony dimensions and areas are approximate and may vary. The information contained within this document does not constitute part of any offer, contract or warranty. Whilst the plans have been prepared with all due care for the convenience of the intending purchaser, the information contained herein is a preliminary guide only.

### Floor Locator



These plans are to be used as a guide only to the apartment types available.



# 1 bedroom apartment

Apartment 64  
Ambrosia House



### Dimensions

Room	Metric	Imperial
Kitchen/Living/Dining	5.68m x 4.65m	18'8" x 15'3"
Master Bedroom	5.52m x 2.45m	18'1" x 8'1"
Bathroom	2.10m x 2.00m	6'11" x 6'7"
<b>Total Area</b>	<b>52.5 sq m</b>	<b>565.1 sq ft</b>
Terrace	11.15m x 1.36m	36'7" x 4'6"

### Floorplan Key

<b>H</b>	Hob	<b>TU</b>	Tall Unit
<b>O</b>	Oven	<b>FF</b>	Fridge Freezer
<b>DW</b>	Dishwasher	<b>ST</b>	Store
<b>WM</b>	Washing Machine		

Apartment, duplex and house layouts provide approximate measurements only. Dimensions, which are taken from the indicated points of measurement, are for guidance only and are not intended to be used for carpet sizes, appliance space or items of furniture. Apartment, duplex and house areas are provided as gross internal areas and may vary. Bathroom and kitchen layouts are indicative only and are subject to change. Wardrobe size and position may vary. All balcony dimensions and areas are approximate and may vary. The information contained within this document does not constitute part of any offer, contract or warranty. Whilst the plans have been prepared with all due care for the convenience of the intending purchaser, the information contained herein is a preliminary guide only.

# 2 bedroom apartment

Apartments 22, 35, 45  
Bramley House



### Dimensions

Room	Metric	Imperial
Kitchen/Living/Dining	5.49m x 4.84m	18'0" x 15'11"
Master Bedroom	5.31m x 2.75m	17'5" x 9'1"
Ensuite	2.10m x 1.25m	6'10" x 4'1"
Bedroom 2	5.32m x 2.64m	17'6" x 8'8"
Bathroom	2.10m x 2.10m	6'11" x 6'11"
<b>Total Area</b>	<b>75.8 sq m</b>	<b>815.9 sq ft</b>
Balcony	4.74m x 1.86m	15'7" x 6'1"

### Floorplan Key

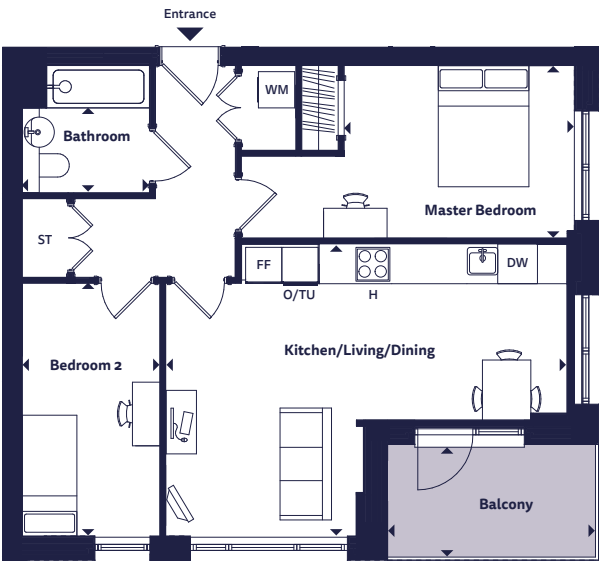
<b>H</b>	Hob	<b>TU</b>	Tall Unit
<b>O</b>	Oven	<b>FF</b>	Fridge Freezer
<b>DW</b>	Dishwasher	<b>ST</b>	Store
<b>WM</b>	Washing Machine		

Apartment, duplex and house layouts provide approximate measurements only. Dimensions, which are taken from the indicated points of measurement, are for guidance only and are not intended to be used for carpet sizes, appliance space or items of furniture. Apartment, duplex and house areas are provided as gross internal areas and may vary. Bathroom and kitchen layouts are indicative only and are subject to change. Wardrobe size and position may vary. All balcony dimensions and areas are approximate and may vary. The information contained within this document does not constitute part of any offer, contract or warranty. Whilst the plans have been prepared with all due care for the convenience of the intending purchaser, the information contained herein is a preliminary guide only.



# 2 bedroom apartment

Apartments 24, 37, 47, 55  
Bramley House



### Dimensions

Room	Metric	Imperial
Kitchen/Living/Dining	6.64m x 4.82m	21'9" x 15'10"
Master Bedroom	5.52m x 2.86m	18'1" x 9'5"
Bedroom 2	4.18m x 2.27m	13'9" x 7'6"
Bathroom	2.10m x 2.10m	6'11" x 6'11"
<b>Total Area</b>	<b>64.3 sq m</b>	<b>692.1 sq ft</b>
Balcony	3.44m x 1.86m	11'4" x 6'2"

### Floorplan Key

<b>H</b>	Hob	<b>TU</b>	Tall Unit
<b>O</b>	Oven	<b>FF</b>	Fridge Freezer
<b>DW</b>	Dishwasher	<b>ST</b>	Store
<b>WM</b>	Washing Machine		

Apartment, duplex and house layouts provide approximate measurements only. Dimensions, which are taken from the indicated points of measurement, are for guidance only and are not intended to be used for carpet sizes, appliance space or items of furniture. Apartment, duplex and house areas are provided as gross internal areas and may vary. Bathroom and kitchen layouts are indicative only and are subject to change. Wardrobe size and position may vary. All balcony dimensions and areas are approximate and may vary. The information contained within this document does not constitute part of any offer, contract or warranty. Whilst the plans have been prepared with all due care for the convenience of the intending purchaser, the information contained herein is a preliminary guide only.

# 2 bedroom apartment

Apartment 52  
Ambrosia House



### Dimensions

Room	Metric	Imperial
Kitchen/Living/Dining	6.09m x 6.06m	20'0" x 19'11"
Master Bedroom	4.72m x 2.75m	15'6" x 9'1"
Bedroom 2	4.72m x 2.75m	15'6" x 9'1"
Bathroom	2.10m x 2.10m	6'11" x 6'11"
<b>Total Area</b>	<b>73.8 sq m</b>	<b>794.4 sq ft</b>
Balcony	4.16m x 1.55m	13'8" x 5'1"

### Floorplan Key

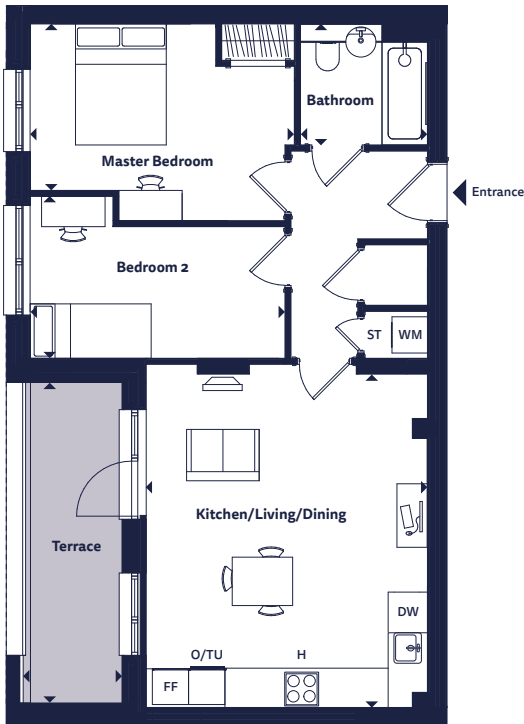
<b>H</b>	Hob	<b>TU</b>	Tall Unit
<b>O</b>	Oven	<b>FF</b>	Fridge Freezer
<b>DW</b>	Dishwasher	<b>ST</b>	Store
<b>WM</b>	Washing Machine		

Apartment, duplex and house layouts provide approximate measurements only. Dimensions, which are taken from the indicated points of measurement, are for guidance only and are not intended to be used for carpet sizes, appliance space or items of furniture. Apartment, duplex and house areas are provided as gross internal areas and may vary. Bathroom and kitchen layouts are indicative only and are subject to change. Wardrobe size and position may vary. All balcony dimensions and areas are approximate and may vary. The information contained within this document does not constitute part of any offer, contract or warranty. Whilst the plans have been prepared with all due care for the convenience of the intending purchaser, the information contained herein is a preliminary guide only.



# 2 bedroom apartment

Apartment 58  
Ambrosia House



## Dimensions

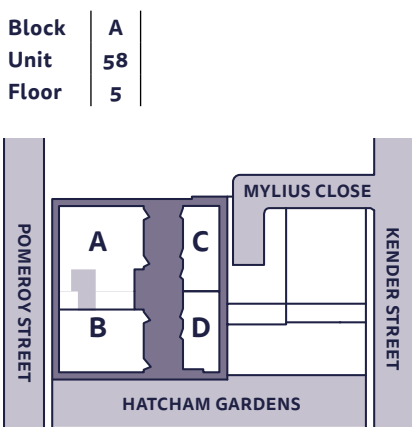
Room	Metric	Imperial
Kitchen/Living/Dining	5.49m x 4.65m	18'0" x 15'3"
Master Bedroom	4.36m x 2.75m	14'4" x 9'1"
Bedroom 2	4.21m x 2.68m	13'10" x 8'10"
Bathroom	2.10m x 2.00m	6'11" x 6'7"
<b>Total Area</b>	<b>63.1 sq m</b>	<b>679.2 sq ft</b>
Terrace	5.30m x 1.69m	17'5" x 5'7"

## Floorplan Key

<b>H</b>	Hob	<b>TU</b>	Tall Unit
<b>O</b>	Oven	<b>FF</b>	Fridge Freezer
<b>DW</b>	Dishwasher	<b>ST</b>	Store
<b>WM</b>	Washing Machine		

Apartment, duplex and house layouts provide approximate measurements only. Dimensions, which are taken from the indicated points of measurement, are for guidance only and are not intended to be used for carpet sizes, appliance space or items of furniture. Apartment, duplex and house areas are provided as gross internal areas and may vary. Bathroom and kitchen layouts are indicative only and are subject to change. Wardrobe size and position may vary. All balcony dimensions and areas are approximate and may vary. The information contained within this document does not constitute part of any offer, contract or warranty. Whilst the plans have been prepared with all due care for the convenience of the intending purchaser, the information contained herein is a preliminary guide only.

## Floor Locator



These plans are to be used as a guide only to the apartment types available.

# 3 bedroom apartment

Apartments 25, 38, 48  
Bramley House



## Dimensions

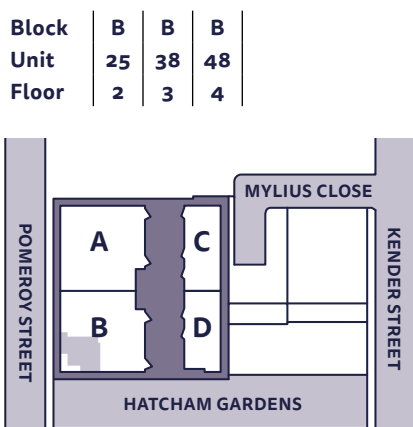
Room	Metric	Imperial
Kitchen/Living/Dining	6.57m x 6.55m	21'7" x 21'6"
Master Bedroom	5.60m x 4.95m	18'5" x 16'3"
Ensuite	2.10m x 1.25m	6'11" x 4'1"
Bedroom 2	3.00m x 2.75m	9'10" x 9'1"
Bedroom 3	4.38m x 3.10m	14'5" x 10'2"
Bathroom	2.10m x 2.00m	6'11" x 6'7"
<b>Total Area</b>	<b>89.0 sq m</b>	<b>958.0 sq ft</b>
Terrace	5.46m x 5.12m	17'11" x 16'10"

## Floorplan Key

<b>H</b>	Hob	<b>TU</b>	Tall Unit
<b>O</b>	Oven	<b>FF</b>	Fridge Freezer
<b>DW</b>	Dishwasher	<b>ST</b>	Store
<b>WM</b>	Washing Machine		

Apartment, duplex and house layouts provide approximate measurements only. Dimensions, which are taken from the indicated points of measurement, are for guidance only and are not intended to be used for carpet sizes, appliance space or items of furniture. Apartment, duplex and house areas are provided as gross internal areas and may vary. Bathroom and kitchen layouts are indicative only and are subject to change. Wardrobe size and position may vary. All balcony dimensions and areas are approximate and may vary. The information contained within this document does not constitute part of any offer, contract or warranty. Whilst the plans have been prepared with all due care for the convenience of the intending purchaser, the information contained herein is a preliminary guide only.

## Floor Locator

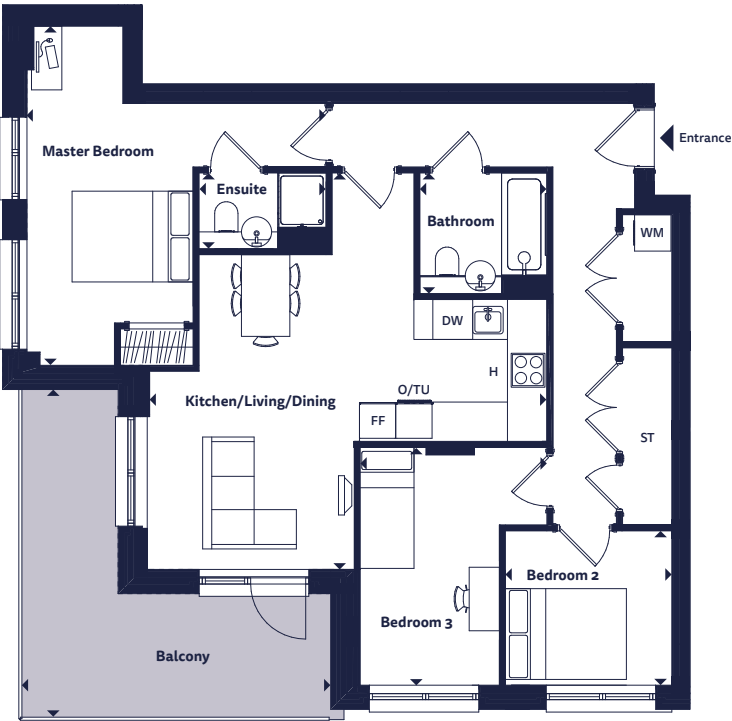


These plans are to be used as a guide only to the apartment types available.



# 3 bedroom apartment

Apartment 56  
Bramley House



## Dimensions

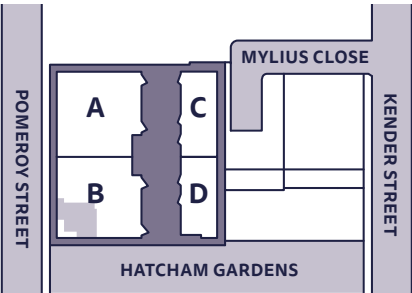
Room	Metric	Imperial
Kitchen/Living/Dining	6.57m x 6.55m	21'7" x 21'6"
Master Bedroom	5.60m x 4.95m	18'5" x 16'3"
Ensuite	2.10m x 1.25m	6'11" x 4'1"
Bedroom 2	2.75m x 2.55m	9'1" x 8'5"
Bedroom 3	3.93m x 3.10m	12'11" x 10'2"
Bathroom	2.10m x 2.00m	6'11" x 6'7"
<b>Total Area</b>	<b>86.7 sq m</b>	<b>933.3 sq ft</b>
Balcony	5.46m x 5.12m	17'11" x 16'10"

## Floorplan Key

<b>H</b>	Hob	<b>TU</b>	Tall Unit
<b>O</b>	Oven	<b>FF</b>	Fridge Freezer
<b>DW</b>	Dishwasher	<b>ST</b>	Store
<b>WM</b>	Washing Machine		

## Floor Locator

Block	B
Unit	56
Floor	5



These plans are to be used as a guide only to the apartment types available.

Apartment, duplex and house layouts provide approximate measurements only. Dimensions, which are taken from the indicated points of measurement, are for guidance only and are not intended to be used for carpet sizes, appliance space or items of furniture. Apartment, duplex and house areas are provided as gross internal areas and may vary. Bathroom and kitchen layouts are indicative only and are subject to change. Wardrobe size and position may vary. All balcony dimensions and areas are approximate and may vary. The information contained within this document does not constitute part of any offer, contract or warranty. Whilst the plans have been prepared with all due care for the convenience of the intending purchaser, the information contained herein is a preliminary guide only.

# 3 bedroom apartment

Apartment 59  
Ambrosia House



## Dimensions

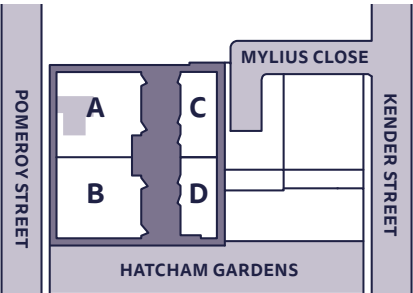
Room	Metric	Imperial
Kitchen/Living/Dining	7.85m x 4.14m	25'9" x 13'7"
Master Bedroom	6.08m x 2.75m	19'12" x 9'1"
Bedroom 2	4.68m x 2.38m	15'4" x 7'10"
Bedroom 3	4.78m x 2.07m	15'9" x 6'10"
Bathroom	2.10m x 2.00m	6'11" x 6'7"
<b>Total Area</b>	<b>81.9 sq m</b>	<b>881.6 sq ft</b>
Balcony	5.98m x 1.59m	19'8" x 5'3"

## Floorplan Key

<b>H</b>	Hob	<b>TU</b>	Tall Unit
<b>O</b>	Oven	<b>FF</b>	Fridge Freezer
<b>DW</b>	Dishwasher	<b>ST</b>	Store
<b>WM</b>	Washing Machine		

## Floor Locator

Block	A
Unit	59
Floor	5



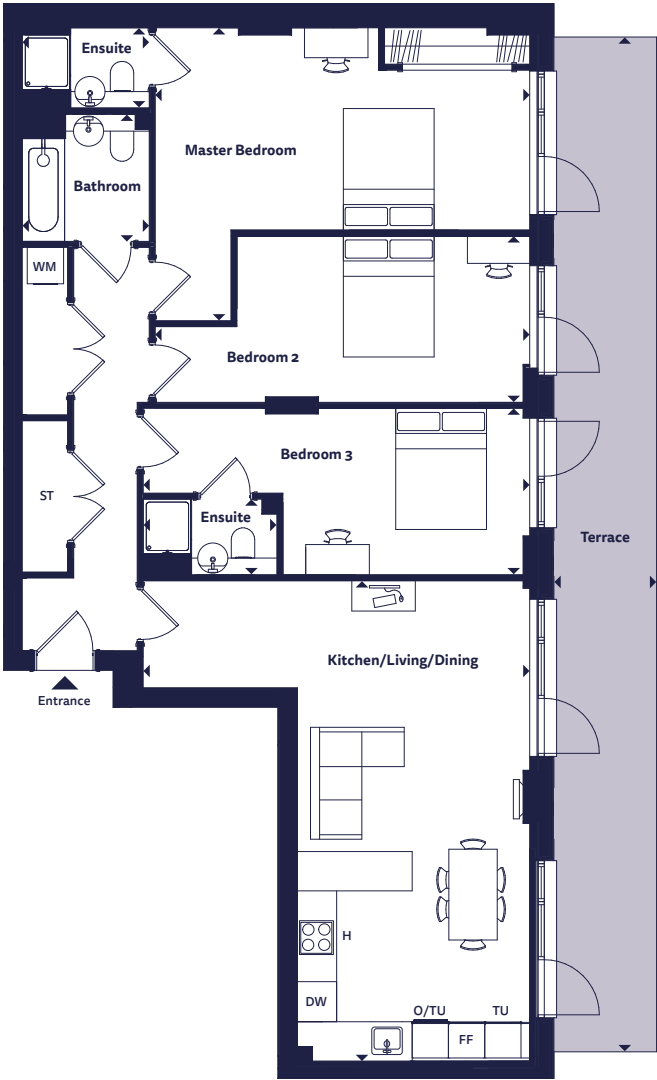
These plans are to be used as a guide only to the apartment types available.

Apartment, duplex and house layouts provide approximate measurements only. Dimensions, which are taken from the indicated points of measurement, are for guidance only and are not intended to be used for carpet sizes, appliance space or items of furniture. Apartment, duplex and house areas are provided as gross internal areas and may vary. Bathroom and kitchen layouts are indicative only and are subject to change. Wardrobe size and position may vary. All balcony dimensions and areas are approximate and may vary. The information contained within this document does not constitute part of any offer, contract or warranty. Whilst the plans have been prepared with all due care for the convenience of the intending purchaser, the information contained herein is a preliminary guide only.



# 3 bedroom apartment

Apartment 60  
Ambrosia House



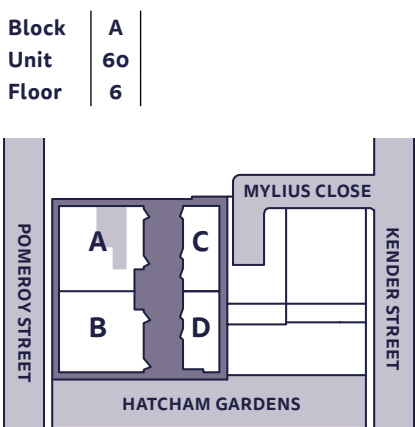
## Dimensions

Room	Metric	Imperial
Kitchen/Living/Dining	7.94m x 6.39m	26'1" x 20'12"
Master Bedroom	6.19m x 4.84m	20'4" x 15'11"
Bedroom 2	6.19m x 2.75m	20'4" x 9'1"
Bedroom 3	6.39m x 2.75m	20'12" x 9'1"
Bathroom	2.10m x 2.10m	6'11" x 6'11"
<b>Total Area</b>	<b>114.1 sq m</b>	<b>1228.2 sq ft</b>
Terrace	16.77m x 1.70m	55'1" x 5'7"

## Floorplan Key

<b>H</b>	Hob	<b>TU</b>	Tall Unit
<b>O</b>	Oven	<b>FF</b>	Fridge Freezer
<b>DW</b>	Dishwasher	<b>ST</b>	Store
<b>WM</b>	Washing Machine		

## Floor Locator

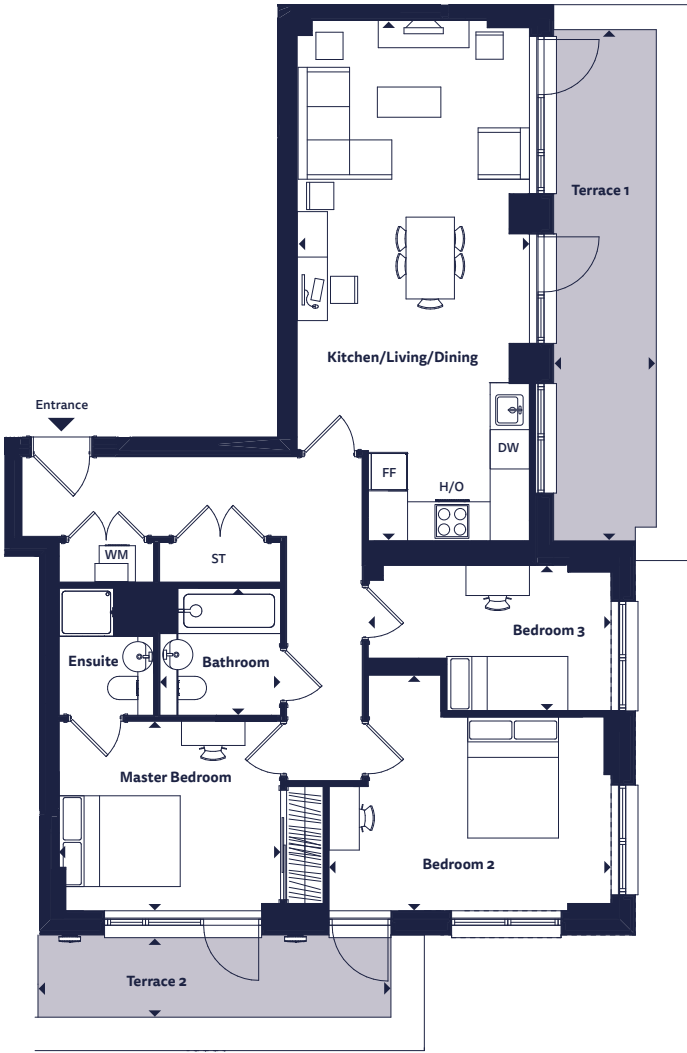


These plans are to be used as a guide only to the apartment types available.

Apartment, duplex and house layouts provide approximate measurements only. Dimensions, which are taken from the indicated points of measurement, are for guidance only and are not intended to be used for carpet sizes, appliance space or items of furniture. Apartment, duplex and house areas are provided as gross internal areas and may vary. Bathroom and kitchen layouts are indicative only and are subject to change. Wardrobe size and position may vary. All balcony dimensions and areas are approximate and may vary. The information contained within this document does not constitute part of any offer, contract or warranty. Whilst the plans have been prepared with all due care for the convenience of the intending purchaser, the information contained herein is a preliminary guide only.

# 3 bedroom apartment

Apartment 62  
Bramley House



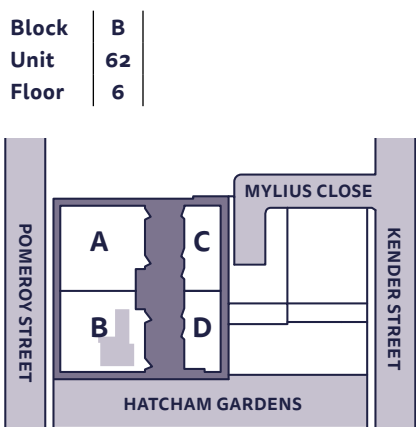
## Dimensions

Room	Metric	Imperial
Kitchen/Living/Dining	8.91m x 3.84m	29'3" x 12'7"
Master Bedroom	3.66m x 3.13m	12'0" x 10'4"
Bedroom 2	4.66m x 3.90m	15'4" x 12'10"
Bedroom 3	4.02m x 2.41m	13'2" x 7'11"
Bathroom	2.10m x 2.00m	6'11" x 6'7"
<b>Total Area</b>	<b>94.6 sq m</b>	<b>1018.3 sq ft</b>
Terrace 1	8.45m x 1.70m	19'2" x 4'6"
Terrace 2	5.84m x 1.36m	27'12" x 10'0"

## Floorplan Key

<b>HO</b>	Hob & Oven	<b>TU</b>	Tall Unit
<b>DW</b>	Dishwasher	<b>FF</b>	Fridge Freezer
<b>WM</b>	Washing Machine	<b>ST</b>	Store

## Floor Locator



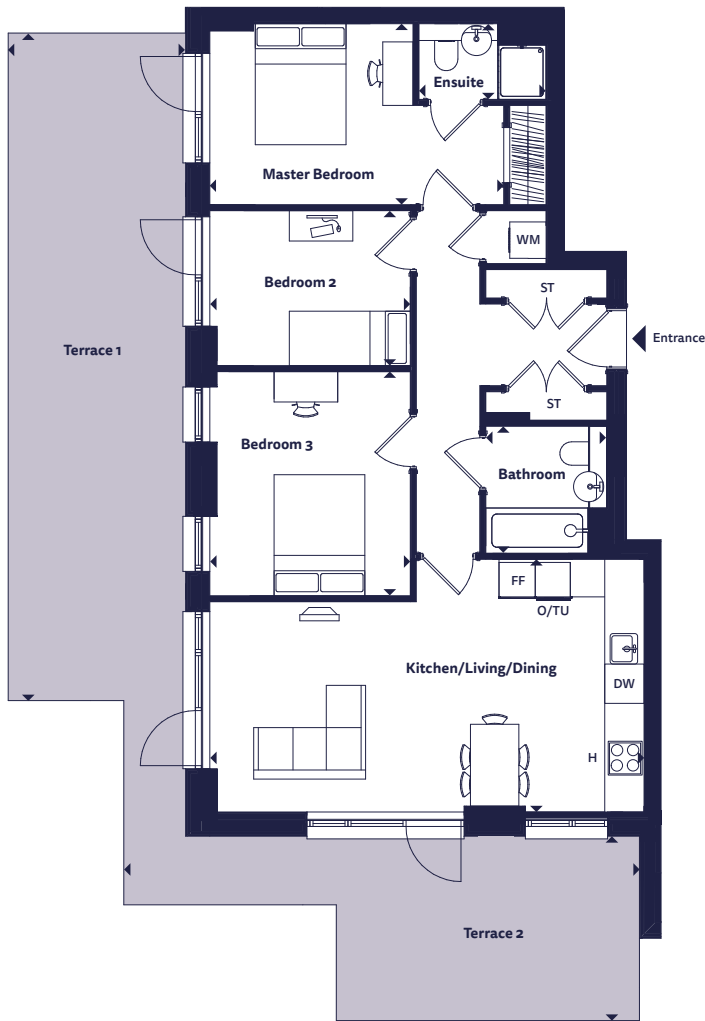
These plans are to be used as a guide only to the apartment types available.

Apartment, duplex and house layouts provide approximate measurements only. Dimensions, which are taken from the indicated points of measurement, are for guidance only and are not intended to be used for carpet sizes, appliance space or items of furniture. Apartment, duplex and house areas are provided as gross internal areas and may vary. Bathroom and kitchen layouts are indicative only and are subject to change. Wardrobe size and position may vary. All balcony dimensions and areas are approximate and may vary. The information contained within this document does not constitute part of any offer, contract or warranty. Whilst the plans have been prepared with all due care for the convenience of the intending purchaser, the information contained herein is a preliminary guide only.



# 3 bedroom apartment

Apartment 63  
Bramley House



## Dimensions

Room	Metric	Imperial
Kitchen/Living/Dining	7.18m x 4.18m	23'7" x 13'9"
Master Bedroom	4.86m x 2.99m	15'11" x 9'10"
Bedroom 2	3.31m x 2.56m	10'11" x 8'5"
Bedroom 3	3.70m x 3.31m	12'2" x 10'11"
Bathroom	2.10m x 2.00m	6'11" x 6'7"
<b>Total Area</b>	<b>84.0 sq m</b>	<b>904.2 sq ft</b>
Terrace 1	11.03m x 2.94m	36'3" x 9'8"
Terrace 2	8.53m x 3.05m	27'12" x 10'0"

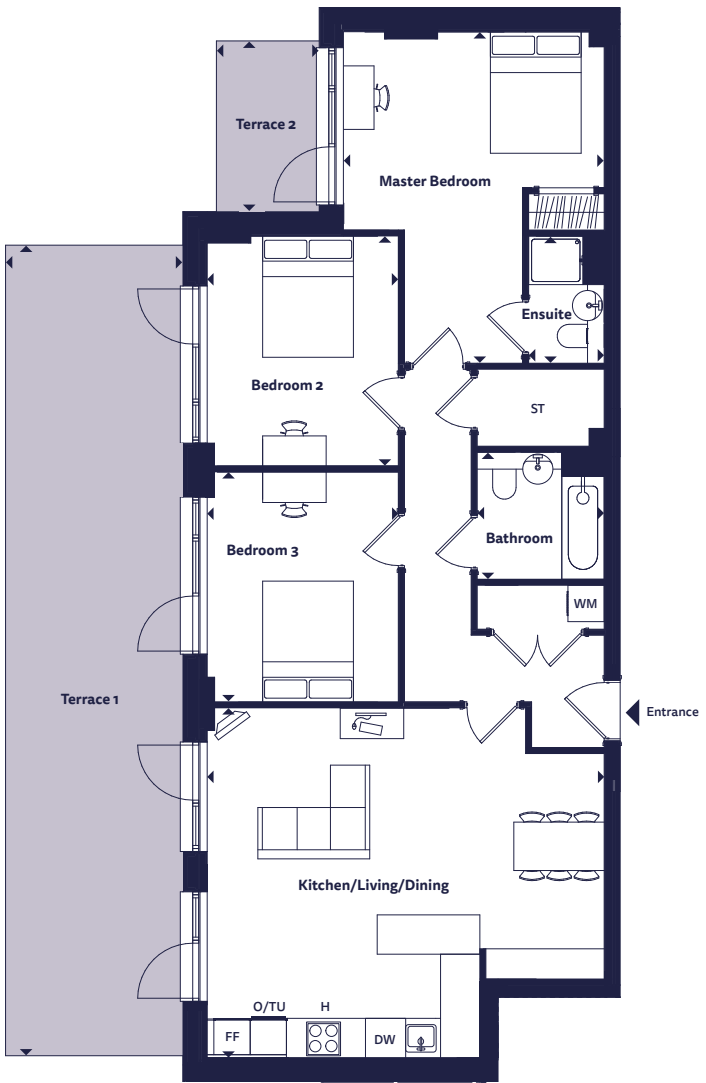
## Floorplan Key

<b>H</b>	Hob	<b>TU</b>	Tall Unit
<b>O</b>	Oven	<b>FF</b>	Fridge Freezer
<b>DW</b>	Dishwasher	<b>ST</b>	Store
<b>WM</b>	Washing Machine		

Apartment, duplex and house layouts provide approximate measurements only. Dimensions, which are taken from the indicated points of measurement, are for guidance only and are not intended to be used for carpet sizes, appliance space or items of furniture. Apartment, duplex and house areas are provided as gross internal areas and may vary. Bathroom and kitchen layouts are indicative only and are subject to change. Wardrobe size and position may vary. All balcony dimensions and areas are approximate and may vary. The information contained within this document does not constitute part of any offer, contract or warranty. Whilst the plans have been prepared with all due care for the convenience of the intending purchaser, the information contained herein is a preliminary guide only.

# 3 bedroom apartment

Apartment 65  
Ambrosia House



## Dimensions

Room	Metric	Imperial
Kitchen/Living/Dining	6.56m x 5.78m	21'7" x 18'12"
Master Bedroom	5.48m x 4.31m	17'12" x 14'2"
Bedroom 2	3.80m x 3.16m	12'6" x 10'5"
Bedroom 3	3.80m x 3.16m	12'6" x 10'5"
Bathroom	2.10m x 2.10m	6'11" x 6'11"
<b>Total Area</b>	<b>101.4 sq m</b>	<b>1091.5 sq ft</b>
Terrace 1	13.40m x 2.94m	43'12" x 9'8"
Terrace 2	2.82m x 1.70m	9'3" x 5'7"

## Floorplan Key

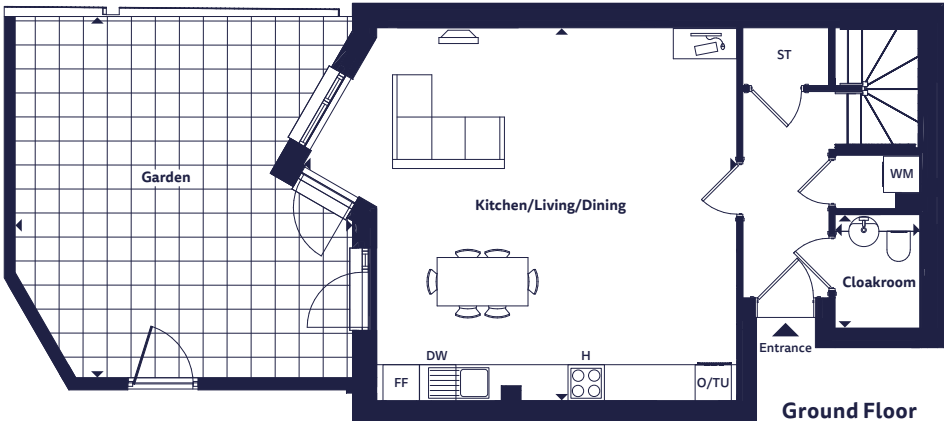
<b>H</b>	Hob	<b>TU</b>	Tall Unit
<b>O</b>	Oven	<b>FF</b>	Fridge Freezer
<b>DW</b>	Dishwasher	<b>ST</b>	Store
<b>WM</b>	Washing Machine		

Apartment, duplex and house layouts provide approximate measurements only. Dimensions, which are taken from the indicated points of measurement, are for guidance only and are not intended to be used for carpet sizes, appliance space or items of furniture. Apartment, duplex and house areas are provided as gross internal areas and may vary. Bathroom and kitchen layouts are indicative only and are subject to change. Wardrobe size and position may vary. All balcony dimensions and areas are approximate and may vary. The information contained within this document does not constitute part of any offer, contract or warranty. Whilst the plans have been prepared with all due care for the convenience of the intending purchaser, the information contained herein is a preliminary guide only.



# The Cortland

3 bedroom duplex  
Cameo House



Dimensions

Room	Metric	Imperial
Kitchen/Living/Dining	7.17m x 6.17m	23'6" x 20'3"
Master Bedroom	4.47m x 3.82m	14'8" x 12'6"
Ensuite	2.86m x 1.60m	9'5" x 5'3"
Bedroom 2	5.75m x 2.95m	18'11" x 9'8"
Bedroom 3	4.67m x 3.15m	15'4" x 10'4"
Bathroom	2.10m x 2.00m	6'11" x 6'7"
Cloakroom	1.88m x 1.40m	6'2" x 4'7"
<b>Total Area</b>	<b>112.5 sq m</b>	<b>1211.0 sq ft</b>
Terrace	2.57m x 1.74m	8'5" x 5'9"
Garden	5.50m x 6.10m	18'1" x 20'0"

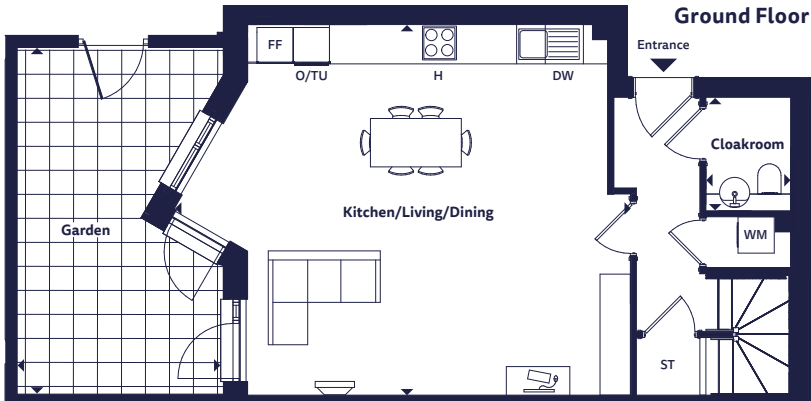
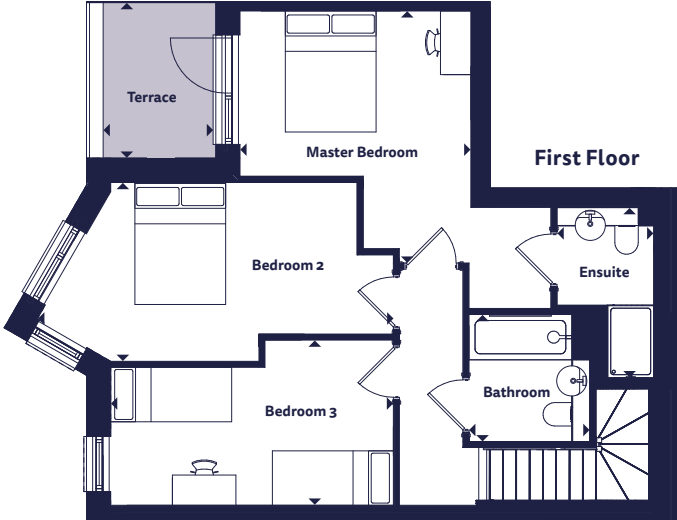
Floorplan Key

<b>H</b>	Hob	<b>TU</b>	Tall Unit
<b>O</b>	Oven	<b>FF</b>	Fridge Freezer
<b>DW</b>	Dishwasher	<b>ST</b>	Store
<b>WM</b>	Washing Machine		

Apartment, duplex and house layouts provide approximate measurements only. Dimensions, which are taken from the indicated points of measurement, are for guidance only and are not intended to be used for carpet sizes, appliance space or items of furniture. Apartment, duplex and house areas are provided as gross internal areas and may vary. Bathroom and kitchen layouts are indicative only and are subject to change. Wardrobe size and position may vary. All balcony dimensions and areas are approximate and may vary. The information contained within this document does not constitute part of any offer, contract or warranty. Whilst the plans have been prepared with all due care for the convenience of the intending purchaser, the information contained herein is a preliminary guide only.

# The Liberty

3 bedroom duplex  
Cameo House



Dimensions

Room	Metric	Imperial
Kitchen/Living/Dining	7.54m x 6.13m	24'9" x 20'1"
Master Bedroom	4.17m x 3.82m	13'8" x 12'6"
Ensuite	2.82m x 1.60m	9'3" x 5'3"
Bedroom 2	5.89m x 2.96m	19'4" x 9'9"
Bedroom 3	4.67m x 2.73m	15'4" x 8'12"
Bathroom	2.10m x 2.00m	6'11" x 6'7"
Cloakroom	1.88m x 1.40m	6'2" x 4'7"
<b>Total Area</b>	<b>112.6 sq m</b>	<b>1212.1 sq ft</b>
Terrace	2.57m x 1.74m	8'5" x 5'9"
Garden	5.70m x 3.40m	18'8" x 11'2"

Floorplan Key

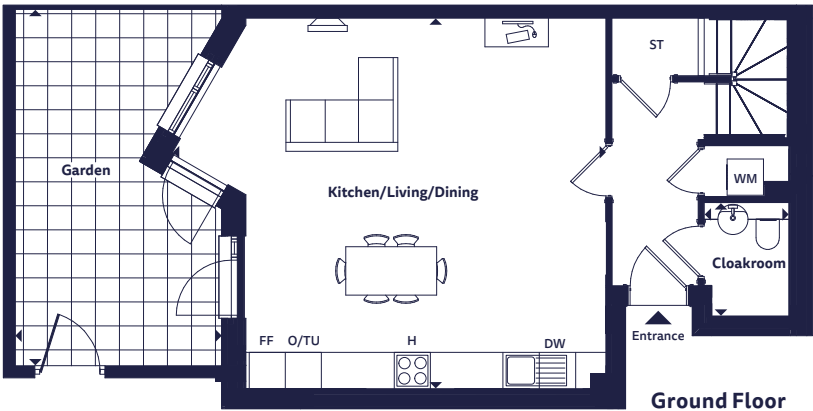
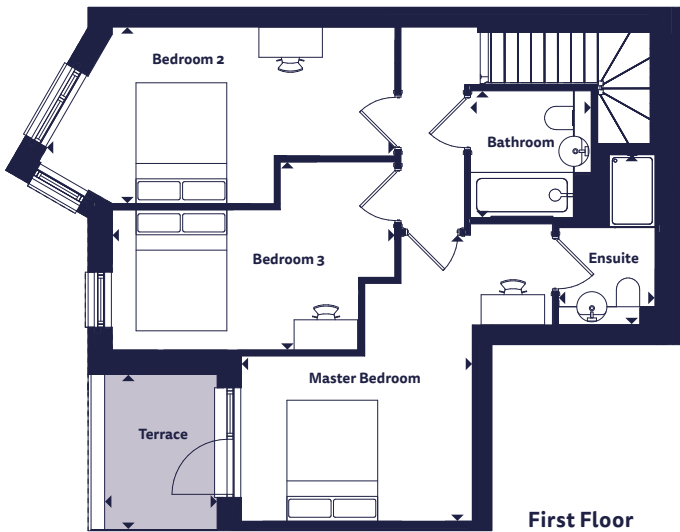
<b>H</b>	Hob	<b>TU</b>	Tall Unit
<b>O</b>	Oven	<b>FF</b>	Fridge Freezer
<b>DW</b>	Dishwasher	<b>ST</b>	Store
<b>WM</b>	Washing Machine		

Apartment, duplex and house layouts provide approximate measurements only. Dimensions, which are taken from the indicated points of measurement, are for guidance only and are not intended to be used for carpet sizes, appliance space or items of furniture. Apartment, duplex and house areas are provided as gross internal areas and may vary. Bathroom and kitchen layouts are indicative only and are subject to change. Wardrobe size and position may vary. All balcony dimensions and areas are approximate and may vary. The information contained within this document does not constitute part of any offer, contract or warranty. Whilst the plans have been prepared with all due care for the convenience of the intending purchaser, the information contained herein is a preliminary guide only.



# The Braeburn

3 bedroom duplex  
Discovery House



Dimensions

Room	Metric	Imperial
Kitchen/Living/Dining	7.17m x 6.13m	23'6" x 20'1"
Master Bedroom	4.73m x 3.82m	15'6" x 12'6"
Ensuite	2.82m x 1.60m	9'3" x 5'3"
Bedroom 2	5.75m x 2.92m	18'11" x 9'7"
Bedroom 3	4.67m x 3.11m	15'4" x 10'3"
Bathroom	2.10m x 2.00m	6'11" x 6'7"
Cloakroom	1.88m x 1.40m	6'2" x 4'7"
<b>Total Area</b>	<b>111.8 sq m</b>	<b>1203.4 sq ft</b>
Terrace	2.57m x 1.74m	8'5" x 5'9"
Garden	5.80m x 3.40m	19'11" x 11'2"

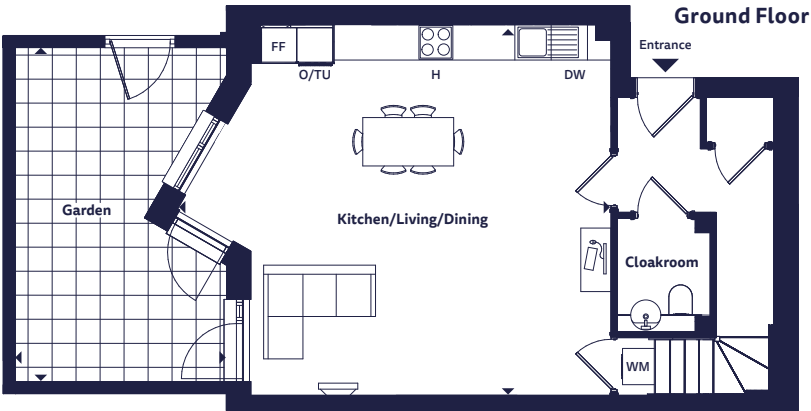
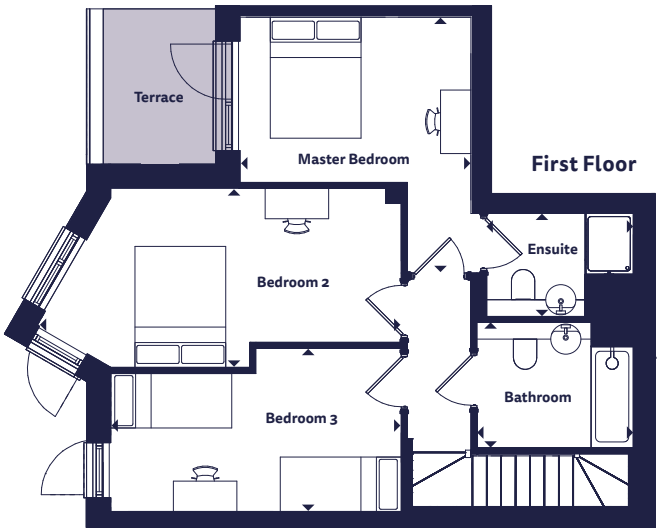
Floorplan Key

<b>H</b>	Hob	<b>TU</b>	Tall Unit
<b>O</b>	Oven	<b>FF</b>	Fridge Freezer
<b>DW</b>	Dishwasher	<b>ST</b>	Store
<b>WM</b>	Washing Machine		

Apartment, duplex and house layouts provide approximate measurements only. Dimensions, which are taken from the indicated points of measurement, are for guidance only and are not intended to be used for carpet sizes, appliance space or items of furniture. Apartment, duplex and house areas are provided as gross internal areas and may vary. Bathroom and kitchen layouts are indicative only and are subject to change. Wardrobe size and position may vary. All balcony dimensions and areas are approximate and may vary. The information contained within this document does not constitute part of any offer, contract or warranty. Whilst the plans have been prepared with all due care for the convenience of the intending purchaser, the information contained herein is a preliminary guide only.

# The Ruben

3 bedroom duplex  
Discovery House



Dimensions

Room	Metric	Imperial
Kitchen/Living/Dining	7.17m x 6.13m	23'6" x 20'1"
Master Bedroom	4.23m x 3.82m	13'11" x 12'6"
Ensuite	2.42m x 1.70m	7'12" x 5'7"
Bedroom 2	6.02m x 2.96m	19'9" x 9'9"
Bedroom 3	4.80m x 2.70m	15'9" x 8'10"
Bathroom	2.59m x 2.07m	8'6" x 6'10"
Cloakroom	1.88m x 1.54m	6'2" x 5'1"
<b>Total Area</b>	<b>109.3 sq m</b>	<b>1176.5 sq ft</b>
Terrace	2.57m x 1.74m	8'5" x 5'9"
Garden	5.5m x 3.5m	18'1" x 11'6"

Floorplan Key

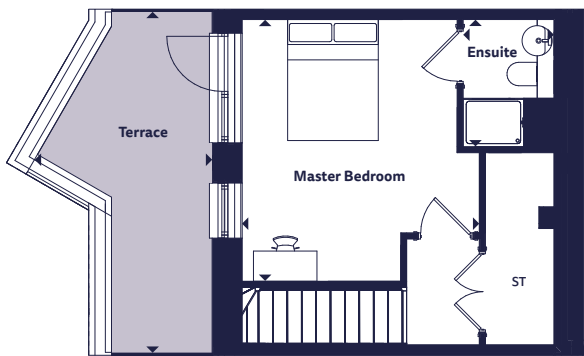
<b>H</b>	Hob	<b>TU</b>	Tall Unit
<b>O</b>	Oven	<b>FF</b>	Fridge Freezer
<b>DW</b>	Dishwasher	<b>ST</b>	Store
<b>WM</b>	Washing Machine		

Apartment, duplex and house layouts provide approximate measurements only. Dimensions, which are taken from the indicated points of measurement, are for guidance only and are not intended to be used for carpet sizes, appliance space or items of furniture. Apartment, duplex and house areas are provided as gross internal areas and may vary. Bathroom and kitchen layouts are indicative only and are subject to change. Wardrobe size and position may vary. All balcony dimensions and areas are approximate and may vary. The information contained within this document does not constitute part of any offer, contract or warranty. Whilst the plans have been prepared with all due care for the convenience of the intending purchaser, the information contained herein is a preliminary guide only.

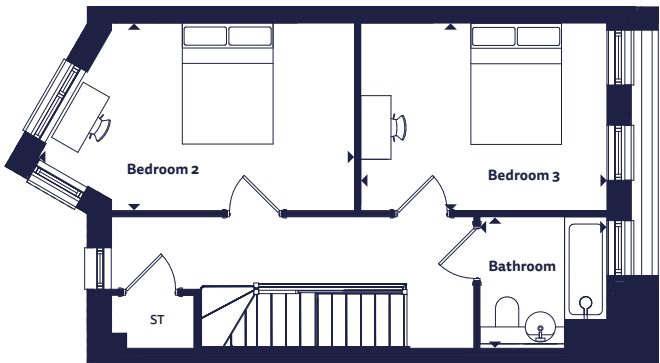


# The Gala

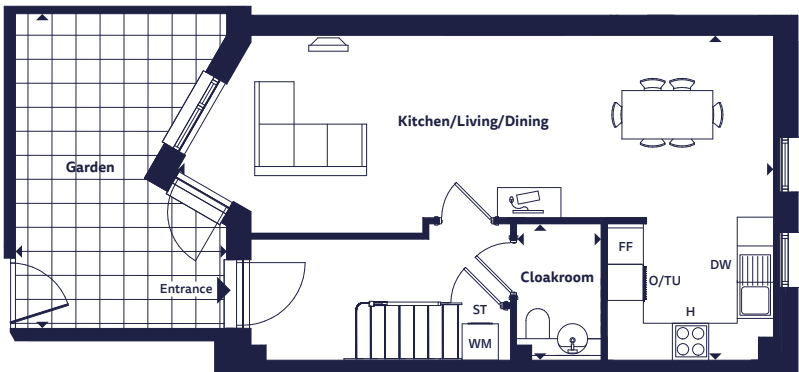
3 bedroom house  
Discovery House



Second Floor



First Floor



Ground Floor

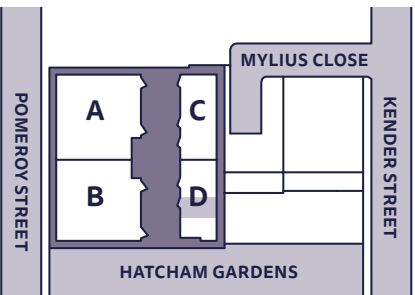


### Dimensions

Room	Metric	Imperial
Kitchen/Living/Dining	9.85m x 5.38m	32'4" x 17'8"
Master Bedroom	4.32m x 3.92m	14'2" x 12'11"
Ensuite	2.10m x 1.50m	6'11" x 4'11"
Bedroom 2	5.23m x 3.10m	17'2" x 10'2"
Bedroom 3	4.07m x 3.10m	13'4" x 10'2"
Bathroom	2.18m x 2.10m	7'2" x 6'11"
Cloakroom	2.25m x 1.40m	7'5" x 4'7"
<b>Total Area</b>	<b>121.9 sq m</b>	<b>1312.2 sq ft</b>
Terrace	5.65m x 2.94m	18'7" x 9'8"
Garden	5.20m x 3.50m	17'1" x 11'6"

### Locator

Block | D |



These plans are to be used as a guide only to the apartment types available.

### Floorplan Key

<b>H</b>	Hob	<b>TU</b>	Tall Unit
<b>O</b>	Oven	<b>FF</b>	Fridge Freezer
<b>DW</b>	Dishwasher	<b>ST</b>	Store
<b>WM</b>	Washing Machine		

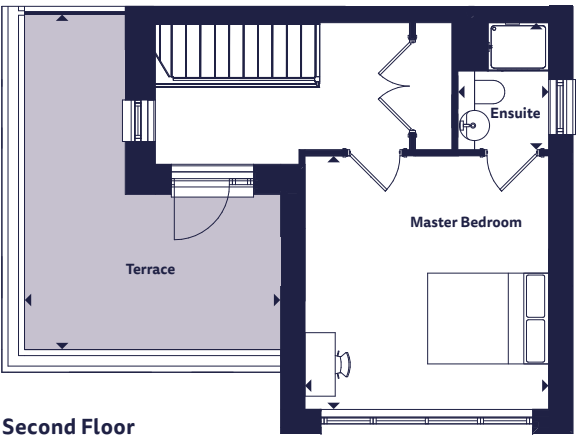
Apartment, duplex and house layouts provide approximate measurements only. Dimensions, which are taken from the indicated points of measurement, are for guidance only and are not intended to be used for carpet sizes, appliance space or items of furniture. Apartment, duplex and house areas are provided as gross internal areas and may vary. Bathroom and kitchen layouts are indicative only and are subject to change. Wardrobe size and position may vary. All balcony dimensions and areas are approximate and may vary. The information contained within this document does not constitute part of any offer, contract or warranty. Whilst the plans have been prepared with all due care for the convenience of the intending purchaser, the information contained herein is a preliminary guide only.



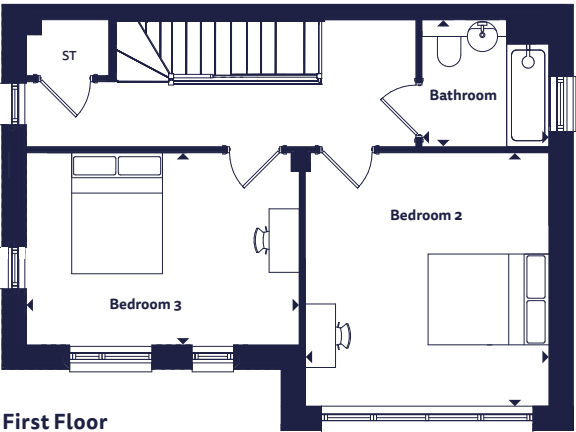
# The Fuji

3 bedroom house

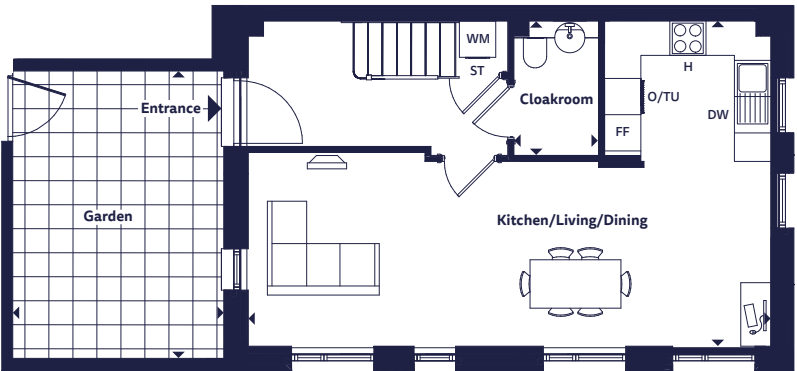
Discovery House



Second Floor



First Floor



Ground Floor

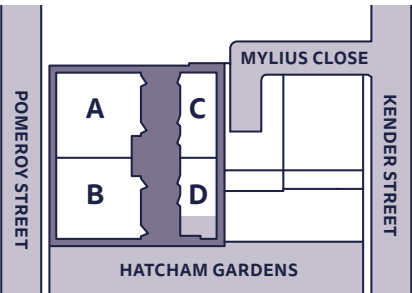


### Dimensions

Room	Metric	Imperial
Kitchen/Living/Dining	8.64m x 5.38m	28'4" x 17'8"
Master Bedroom	4.19m x 4.03m	13'9" x 13'3"
Ensuite	2.10m x 1.50m	6'11" x 4'11"
Bedroom 2	4.19m x 4.03m	13'9" x 13'3"
Bedroom 3	4.51m x 3.18m	14'10" x 10'5"
Bathroom	2.10m x 2.10m	6'11" x 6'11"
Cloakroom	2.22m x 1.40m	7'4" x 4'7"
<b>Total Area</b>	<b>129.9 sq m</b>	<b>1398.3 sq ft</b>
Terrace	5.54m x 4.24m	18'2" x 13'11"
Garden	4.70m x 3.40m	15'5" x 19'8"

### Locator

Block | D |



These plans are to be used as a guide only to the apartment types available.

### Floorplan Key

<b>H</b>	Hob	<b>TU</b>	Tall Unit
<b>O</b>	Oven	<b>FF</b>	Fridge Freezer
<b>DW</b>	Dishwasher	<b>ST</b>	Store
<b>WM</b>	Washing Machine		

Apartment, duplex and house layouts provide approximate measurements only. Dimensions, which are taken from the indicated points of measurement, are for guidance only and are not intended to be used for carpet sizes, appliance space or items of furniture. Apartment, duplex and house areas are provided as gross internal areas and may vary. Bathroom and kitchen layouts are indicative only and are subject to change. Wardrobe size and position may vary. All balcony dimensions and areas are approximate and may vary. The information contained within this document does not constitute part of any offer, contract or warranty. Whilst the plans have been prepared with all due care for the convenience of the intending purchaser, the information contained herein is a preliminary guide only.



# Give in to temptation

*Each home features stylish modern appliances and quality fixtures and fittings throughout.*



**Kitchen**

- Contemporary kitchen by Symphony (New York range) in Gloss Pearl Grey
- Soft close to doors and drawers
- Laminate worktops in Brazilia
- Glass splashback in Platinum
- Stainless steel mixer tap and single bowl sink
- Integrated Zanussi electric hob, cooker hood, fan assisted oven, fridge freezer and dishwasher

**Main Bathroom**

- White sanitaryware with single lever chrome basin taps and shower attachments by Hansgrohe
- Bath with shower over and glass screen
- Heated chrome towel rail
- Matt grey porcelain wall and floor tiles

**En-suite**

- White sanitaryware with chrome taps and shower attachments by Hansgrohe
- Shower cubicle with Raindance shower head
- Low profile shower tray with glass bi-fold door
- Heated chrome towel rail
- Matt grey porcelain wall and floor tiles

**Decorative finishes**

- Walls painted in white emulsion throughout
- Joinery painted in white satin throughout

**Floor finishes**

- Carpet in Silverstone to bedrooms, landing and stairs
- Vinyl flooring in Silk Light Oak to living room, hallways and kitchen
- Matt grey porcelain tiles on floors and walls of bathroom, toilet and shower room

**Electrical**

- White downlighters to kitchen and bathroom
- Above-mirror light in bathroom
- Compact horizontal radiators throughout

**Security & Peace of Mind**

- Video entry system to apartments
- Wired heat and smoke detectors
- Multi-lock door and spy hole to home entrance
- 12 year Premier warranty
- Predicted energy assessment – EPC band B

**Main Bedroom**

- Oaklands collection carpet in Silverstone
- Built-in wardrobe with sliding mirrored doors to master bedrooms

**Utility & Electricals**

- Electricity usage smart meter to hallway cupboard
- Television points with Sky+ provisions to living room
- Landline telephone and BT data points to living room
- Beko 6kg washing machine

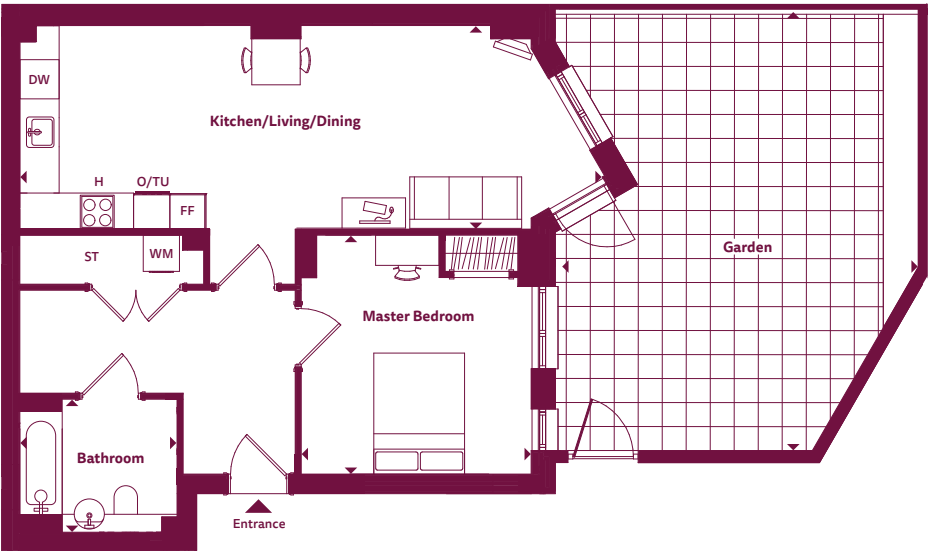
Bedroom at previous Peabody show home



Whilst every effort has been taken to ensure the accuracy of the information provided, the specification has been supplied as a guide and Peabody reserves the right to amend the specification as necessary and without notice.

# 1 bedroom apartment

Apartment 7 - wheelchair adaptable  
Ambrosia House



Dimensions

Room	Metric	Imperial
Kitchen/Living/Dining	9.67m x 3.37m	31'9" x 11'1"
Master Bedroom	3.95m x 3.80m	13'0" x 12'6"
Bathroom	2.60m x 2.20m	8'7" x 7'3"
<b>Total Area</b>	<b>66.9 sq m</b>	<b>720.1 sq ft</b>
Garden	7.30m x 6.00m	23'11" x 19'8"

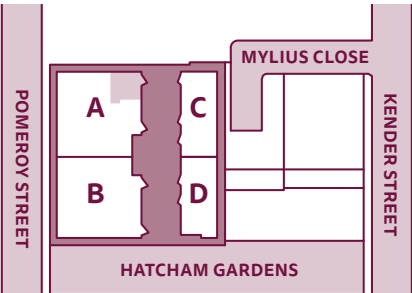
Floorplan Key

<b>H</b>	Hob	<b>TU</b>	Tall Unit
<b>O</b>	Oven	<b>FF</b>	Fridge Freezer
<b>DW</b>	Dishwasher	<b>ST</b>	Store
<b>WM</b>	Washing Machine		

Apartment, duplex and house layouts provide approximate measurements only. Dimensions, which are taken from the indicated points of measurement, are for guidance only and are not intended to be used for carpet sizes, appliance space or items of furniture. Apartment, duplex and house areas are provided as gross internal areas and may vary. Bathroom and kitchen layouts are indicative only and are subject to change. Wardrobe size and position may vary. All balcony dimensions and areas are approximate and may vary. The information contained within this document does not constitute part of any offer, contract or warranty. Whilst the plans have been prepared with all due care for the convenience of the intending purchaser, the information contained herein is a preliminary guide only.

Floor Locator

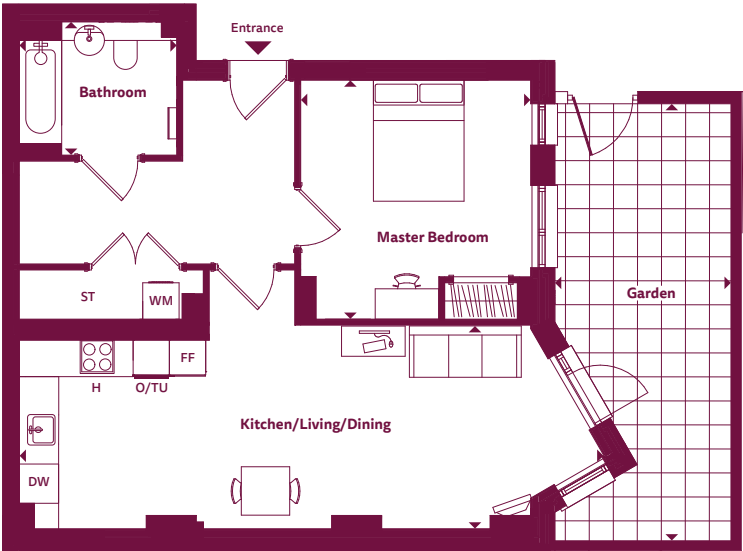
Block	A
Unit	7
Floor	G



These plans are to be used as a guide only to the apartment types available.

# 1 bedroom apartment

Apartment 8 - wheelchair adaptable  
Ambrosia House



Dimensions

Room	Metric	Imperial
Kitchen/Living/Dining	9.67m x 3.22m	31'9" x 10'7"
Master Bedroom	3.95m x 3.80m	13'0" x 12'6"
Bathroom	2.60m x 2.20m	8'7" x 7'3"
<b>Total Area</b>	<b>66.9 sq m</b>	<b>720.1 sq ft</b>
Garden	7.20m x 2.90m	23'7" x 9'6"

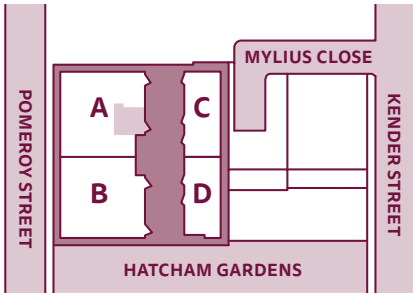
Floorplan Key

<b>H</b>	Hob	<b>TU</b>	Tall Unit
<b>O</b>	Oven	<b>FF</b>	Fridge Freezer
<b>DW</b>	Dishwasher	<b>ST</b>	Store
<b>WM</b>	Washing Machine		

Apartment, duplex and house layouts provide approximate measurements only. Dimensions, which are taken from the indicated points of measurement, are for guidance only and are not intended to be used for carpet sizes, appliance space or items of furniture. Apartment, duplex and house areas are provided as gross internal areas and may vary. Bathroom and kitchen layouts are indicative only and are subject to change. Wardrobe size and position may vary. All balcony dimensions and areas are approximate and may vary. The information contained within this document does not constitute part of any offer, contract or warranty. Whilst the plans have been prepared with all due care for the convenience of the intending purchaser, the information contained herein is a preliminary guide only.

Floor Locator

Block	A
Unit	8
Floor	G

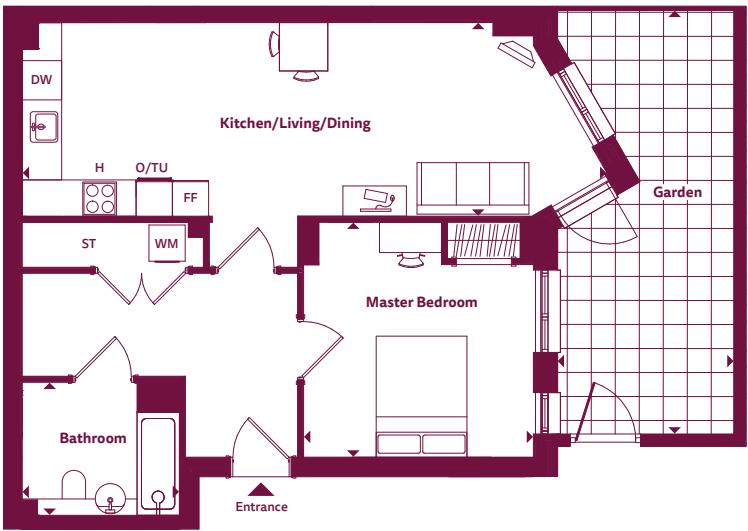


These plans are to be used as a guide only to the apartment types available.



# 1 bedroom apartment

Apartment 9 - wheelchair adaptable  
Bramley House



## Dimensions

Room	Metric	Imperial
Kitchen/Living/Dining	9.67m x 3.20m	31'9" x 10'6"
Master Bedroom	3.88m x 3.80m	12'9" x 12'6"
Bathroom	2.60m x 2.20m	8'7" x 7'3"
<b>Total Area</b>	<b>64.9 sq m</b>	<b>698.6 sq ft</b>
Garden	7.00m x 2.70m	22'12" x 8'10"

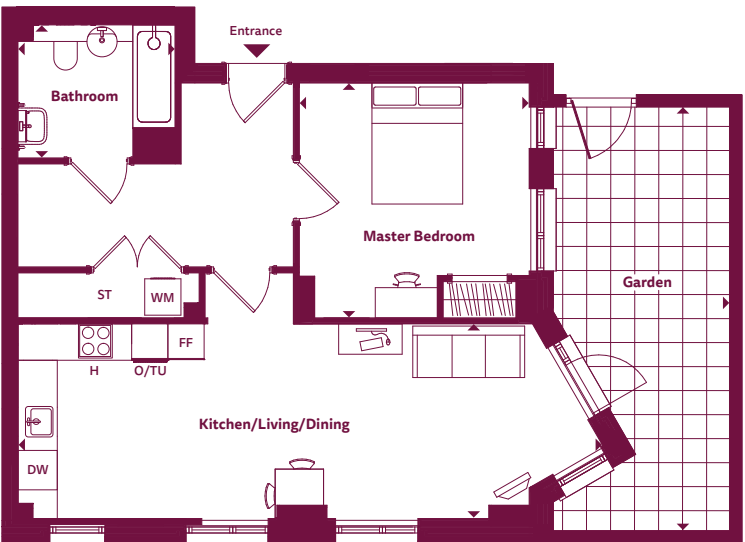
## Floorplan Key

<b>H</b>	Hob	<b>TU</b>	Tall Unit
<b>O</b>	Oven	<b>FF</b>	Fridge Freezer
<b>DW</b>	Dishwasher	<b>ST</b>	Store
<b>WM</b>	Washing Machine		

Apartment, duplex and house layouts provide approximate measurements only. Dimensions, which are taken from the indicated points of measurement, are for guidance only and are not intended to be used for carpet sizes, appliance space or items of furniture. Apartment, duplex and house areas are provided as gross internal areas and may vary. Bathroom and kitchen layouts are indicative only and are subject to change. Wardrobe size and position may vary. All balcony dimensions and areas are approximate and may vary. The information contained within this document does not constitute part of any offer, contract or warranty. Whilst the plans have been prepared with all due care for the convenience of the intending purchaser, the information contained herein is a preliminary guide only.

# 1 bedroom apartment

Apartment 10 - wheelchair adaptable  
Bramley House



## Dimensions

Room	Metric	Imperial
Kitchen/Living/Dining	9.67m x 3.22m	31'9" x 10'7"
Master Bedroom	3.88m x 3.80m	12'9" x 12'6"
Bathroom	2.60m x 2.20m	8'7" x 7'3"
<b>Total Area</b>	<b>65.0 sq m</b>	<b>699.7 sq ft</b>
Garden	7.00m x 2.90m	22'12" x 9'6"

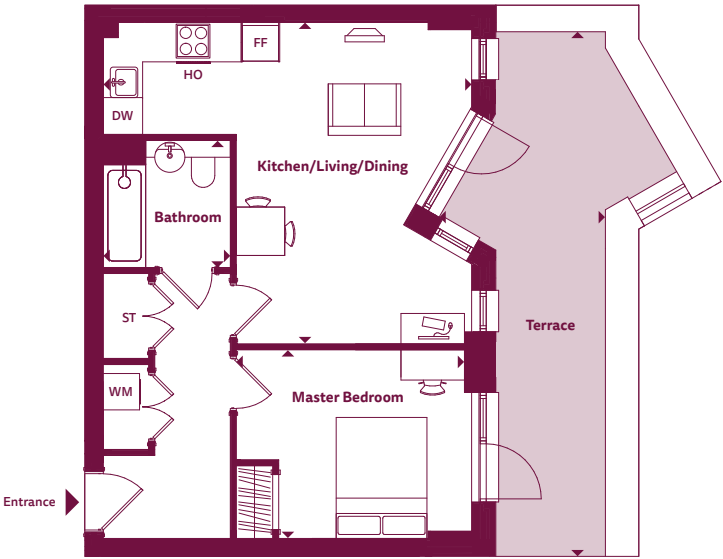
## Floorplan Key

<b>H</b>	Hob	<b>TU</b>	Tall Unit
<b>O</b>	Oven	<b>FF</b>	Fridge Freezer
<b>DW</b>	Dishwasher	<b>ST</b>	Store
<b>WM</b>	Washing Machine		

Apartment, duplex and house layouts provide approximate measurements only. Dimensions, which are taken from the indicated points of measurement, are for guidance only and are not intended to be used for carpet sizes, appliance space or items of furniture. Apartment, duplex and house areas are provided as gross internal areas and may vary. Bathroom and kitchen layouts are indicative only and are subject to change. Wardrobe size and position may vary. All balcony dimensions and areas are approximate and may vary. The information contained within this document does not constitute part of any offer, contract or warranty. Whilst the plans have been prepared with all due care for the convenience of the intending purchaser, the information contained herein is a preliminary guide only.

# 1 bedroom apartment

Apartment 15  
Bramley House



### Dimensions

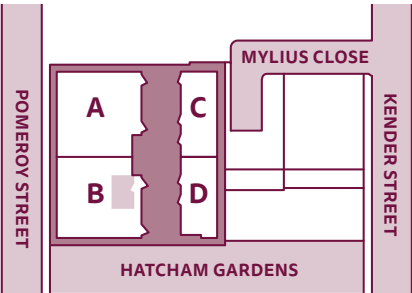
Room	Metric	Imperial
Kitchen/Living/Dining	6.09m x 5.30m	20'0" x 17'5"
Master Bedroom	3.77m x 3.12m	14'5" x 10'3"
Bathroom	2.10m x 2.10m	6'11" x 6'11"
<b>Total Area</b>	<b>50.5 sq m</b>	<b>543.6 sq ft</b>
Terrace	8.73m x 2.75m	28'8" x 9'1"

### Floorplan Key

<b>HO</b>	Hob & Oven	<b>TU</b>	Tall Unit
<b>DW</b>	Dishwasher	<b>FF</b>	Fridge Freezer
<b>WM</b>	Washing Machine	<b>ST</b>	Store

### Floor Locator

Block	B
Unit	15
Floor	1

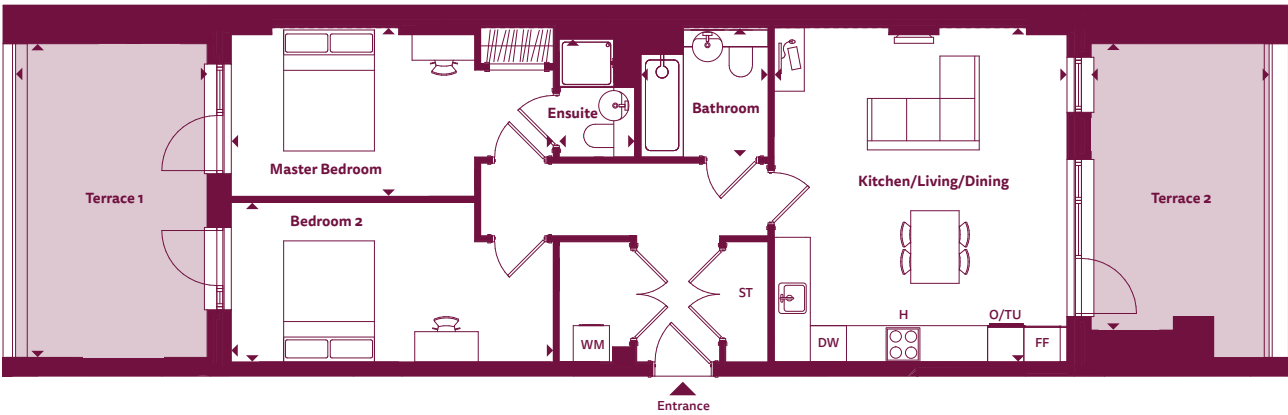


These plans are to be used as a guide only to the apartment types available.

Apartment, duplex and house layouts provide approximate measurements only. Dimensions, which are taken from the indicated points of measurement, are for guidance only and are not intended to be used for carpet sizes, appliance space or items of furniture. Apartment, duplex and house areas are provided as gross internal areas and may vary. Bathroom and kitchen layouts are indicative only and are subject to change. Wardrobe size and position may vary. All balcony dimensions and areas are approximate and may vary. The information contained within this document does not constitute part of any offer, contract or warranty. Whilst the plans have been prepared with all due care for the convenience of the intending purchaser, the information contained herein is a preliminary guide only.

# 2 bedroom apartment

Apartment 14  
Bramley House



### Dimensions

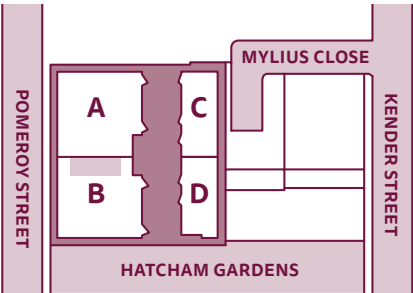
Room	Metric	Imperial
Kitchen/Living/Dining	5.49m x 4.84m	18'0" x 15'11"
Master Bedroom	5.31m x 2.75m	17'5" x 9'1"
Ensuite	2.10m x 1.25m	6'11" x 4'1"
Bedroom 2	5.32m x 2.64m	17'6" x 8'8"
Bathroom	2.10m x 2.10m	6'11" x 6'11"
<b>Total Area</b>	<b>75.8 sq m</b>	<b>815.9 sq ft</b>
Terrace 1	4.74m x 2.94m	15'7" x 9'8"
Terrace 2	5.19m x 3.17m	17'0" x 10'5"

### Floorplan Key

<b>H</b>	Hob	<b>TU</b>	Tall Unit
<b>O</b>	Oven	<b>FF</b>	Fridge Freezer
<b>DW</b>	Dishwasher	<b>ST</b>	Store
<b>WM</b>	Washing Machine		

### Floor Locator

Block	B
Unit	14
Floor	1



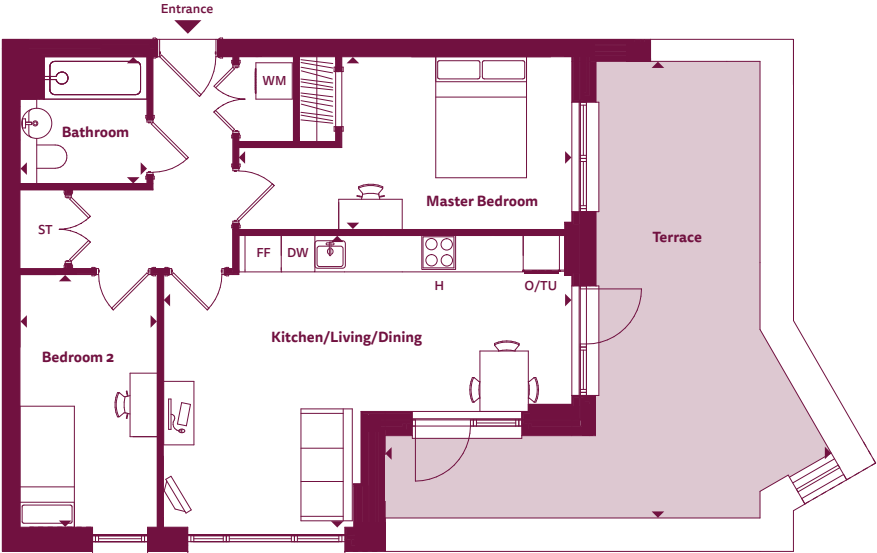
These plans are to be used as a guide only to the apartment types available.

Apartment, duplex and house layouts provide approximate measurements only. Dimensions, which are taken from the indicated points of measurement, are for guidance only and are not intended to be used for carpet sizes, appliance space or items of furniture. Apartment, duplex and house areas are provided as gross internal areas and may vary. Bathroom and kitchen layouts are indicative only and are subject to change. Wardrobe size and position may vary. All balcony dimensions and areas are approximate and may vary. The information contained within this document does not constitute part of any offer, contract or warranty. Whilst the plans have been prepared with all due care for the convenience of the intending purchaser, the information contained herein is a preliminary guide only.



# 2 bedroom apartment

Apartment 16  
Bramley House



### Dimensions

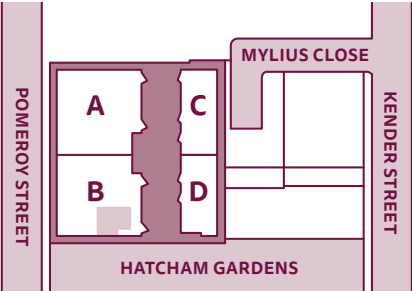
Room	Metric	Imperial
Kitchen/Living/Dining	6.76m x 4.82m	22'2" x 15'10"
Master Bedroom	5.52m x 2.86m	18'1" x 9'5"
Bedroom 2	4.18m x 2.27m	13'9" x 7'6"
Bathroom	2.10m x 2.10m	6'11" x 6'11"
<b>Total Area</b>	<b>64.3 sq m</b>	<b>692.1 sq ft</b>
Terrace	7.55m x 7.38m	24'9" x 24'3"

### Floorplan Key

<b>H</b>	Hob	<b>TU</b>	Tall Unit
<b>O</b>	Oven	<b>FF</b>	Fridge Freezer
<b>DW</b>	Dishwasher	<b>ST</b>	Store
<b>WM</b>	Washing Machine		

### Floor Locator

<b>Block</b>	<b>B</b>
<b>Unit</b>	<b>16</b>
<b>Floor</b>	<b>1</b>



These plans are to be used as a guide only to the apartment types available.

Apartment, duplex and house layouts provide approximate measurements only. Dimensions, which are taken from the indicated points of measurement, are for guidance only and are not intended to be used for carpet sizes, appliance space or items of furniture. Apartment, duplex and house areas are provided as gross internal areas and may vary. Bathroom and kitchen layouts are indicative only and are subject to change. Wardrobe size and position may vary. All balcony dimensions and areas are approximate and may vary. The information contained within this document does not constitute part of any offer, contract or warranty. Whilst the plans have been prepared with all due care for the convenience of the intending purchaser, the information contained herein is a preliminary guide only.



Computer generated image for illustrative purposes only.



# Shared Ownership

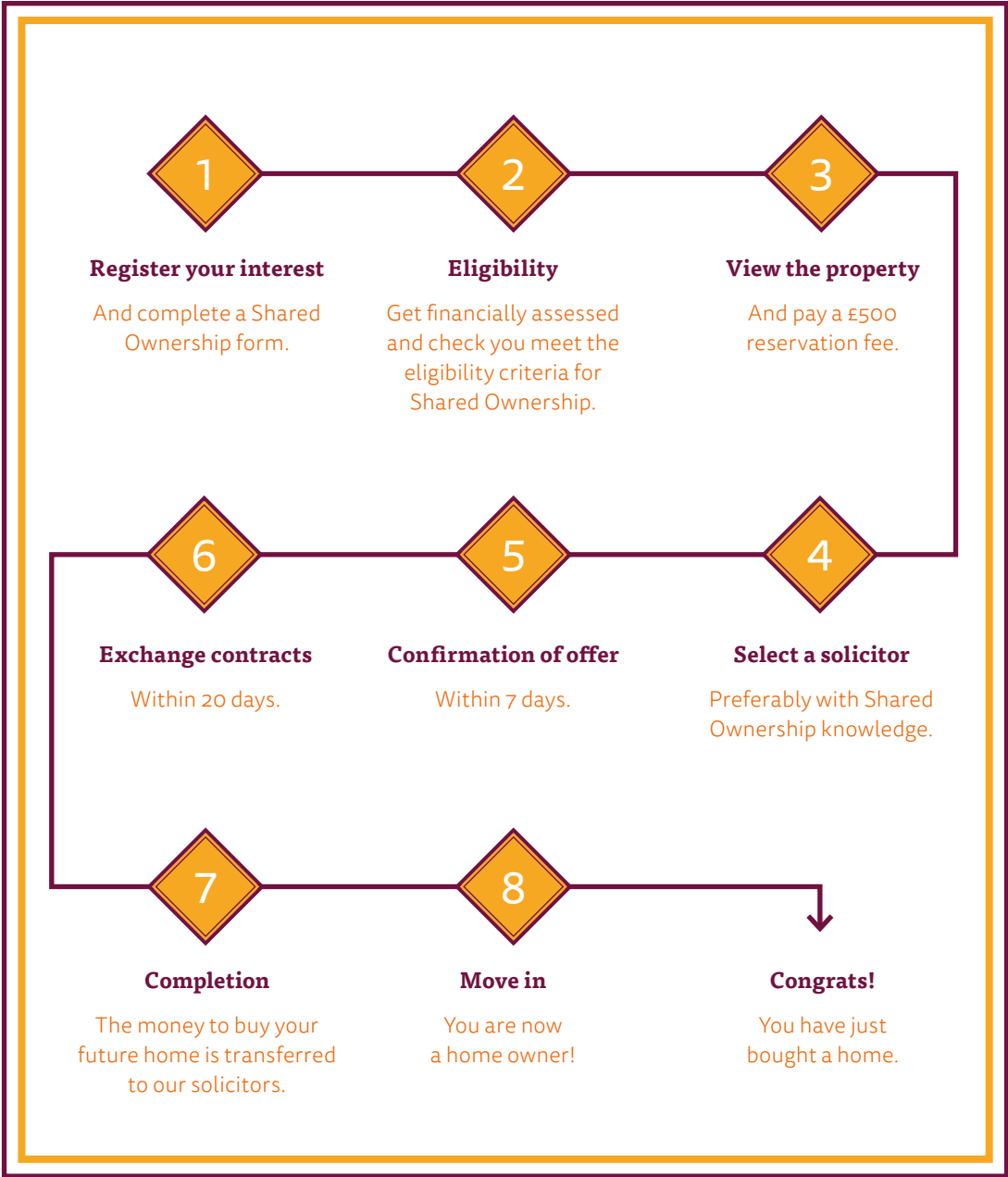
*Making it possible to own your home.*

Shared ownership is another way to buy your home and get on the property ladder. You buy a share between 25% and 75% of the home's value, and pay rent on the remaining share. Peabody owns part of it – but you're living there, you decorate it, and you decide when to sell. Buying a percentage usually means a smaller deposit and smaller mortgage.

It's an easier way to step on the ladder for lots of people. You can also carry on buying more shares (we call this Staircasing) and eventually own 100%. Find out more and check your eligibility here:  
[www.peabodysales.co.uk/ways-to-buy/shared-ownership/eligibility-check/](http://www.peabodysales.co.uk/ways-to-buy/shared-ownership/eligibility-check/)



## Buying a Shared Ownership home in 8 easy steps





# About Peabody

London has been our home for over 150 years. **Make it yours.**

Peabody has over 150 years of history, experience and expertise. With over 66,000 homes, we are one of the largest housing providers in London and the south-east.

We deliver services to 111,000 residents, 8,000 care and support customers, and the wider communities in which we work.

| 76

We focus on those who need our help the most, working with people and communities to build resilience and promote wellbeing. We create and invest in great places where people want to live. Our ambitious housebuilding programme will deliver at least 2,500 homes every year.

[peabodysales.co.uk/pomeroy](https://peabodysales.co.uk/pomeroy)  
0203 369 0757

## Peabody's award-winning developments

West View Battersea, SW8



Fish Island Village, E3



Every care has been taken in the preparation of this brochure. The details contained herein are for guidance only and should not be relied upon as exactly describing any of the particular material illustrated or written by any order under the Consumer Protection from Unfair Trading Regulations 2008. This information does not constitute a contract, part of a contract or warranty. The developer operates a programme of continuous product development. Features, internal and external, may vary from time to time and may differ from those shown in the brochure. Computer generated images and photography used within this brochure are indicative only. The Pomeroy is a marketing name and may not form part of the postal address for these properties. Information correct at time of print, February 2020.

[peabodysales.co.uk/pomeroy](http://peabodysales.co.uk/pomeroy)  
0203 369 0757

