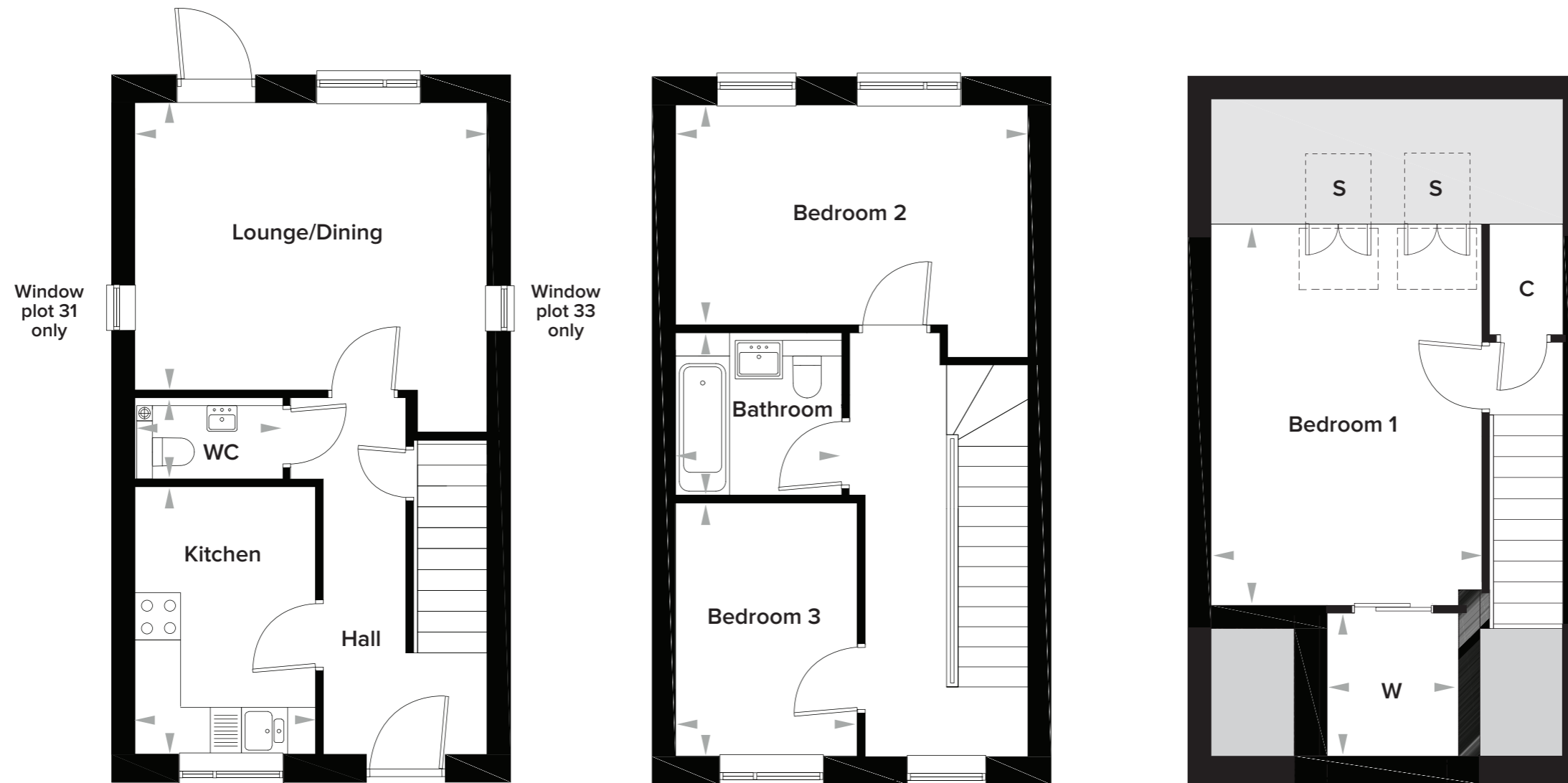


Ebbfleet Cross, Kent

3 Bedroom House (Plots 31, 32 & 33)



Ground Floor

Lounge/Dining	4553mm x 3679mm	14' 11" x 12' 0"
Kitchen	3144mm x 2336mm	10' 4" x 7' 8"
WC	2050mm x 1450mm	6' 9" x 4' 9"

First Floor

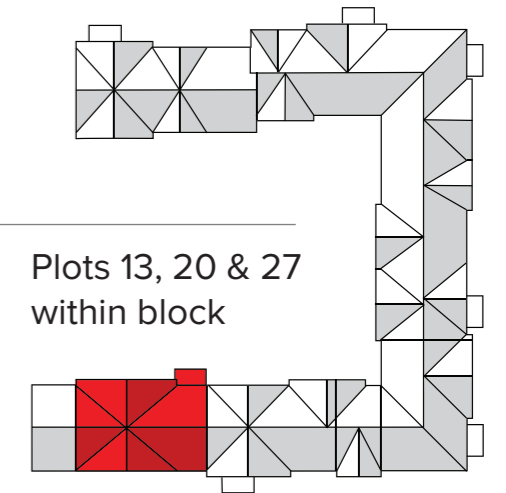
Bedroom 2	4553mm x 2754mm	14' 11" x 9' 0"
Bedroom 3	3294mm x 2276mm	10' 9" x 9' 1"
Bathroom	2200mm x 2050mm	7' 3" x 6' 9"

Second Floor

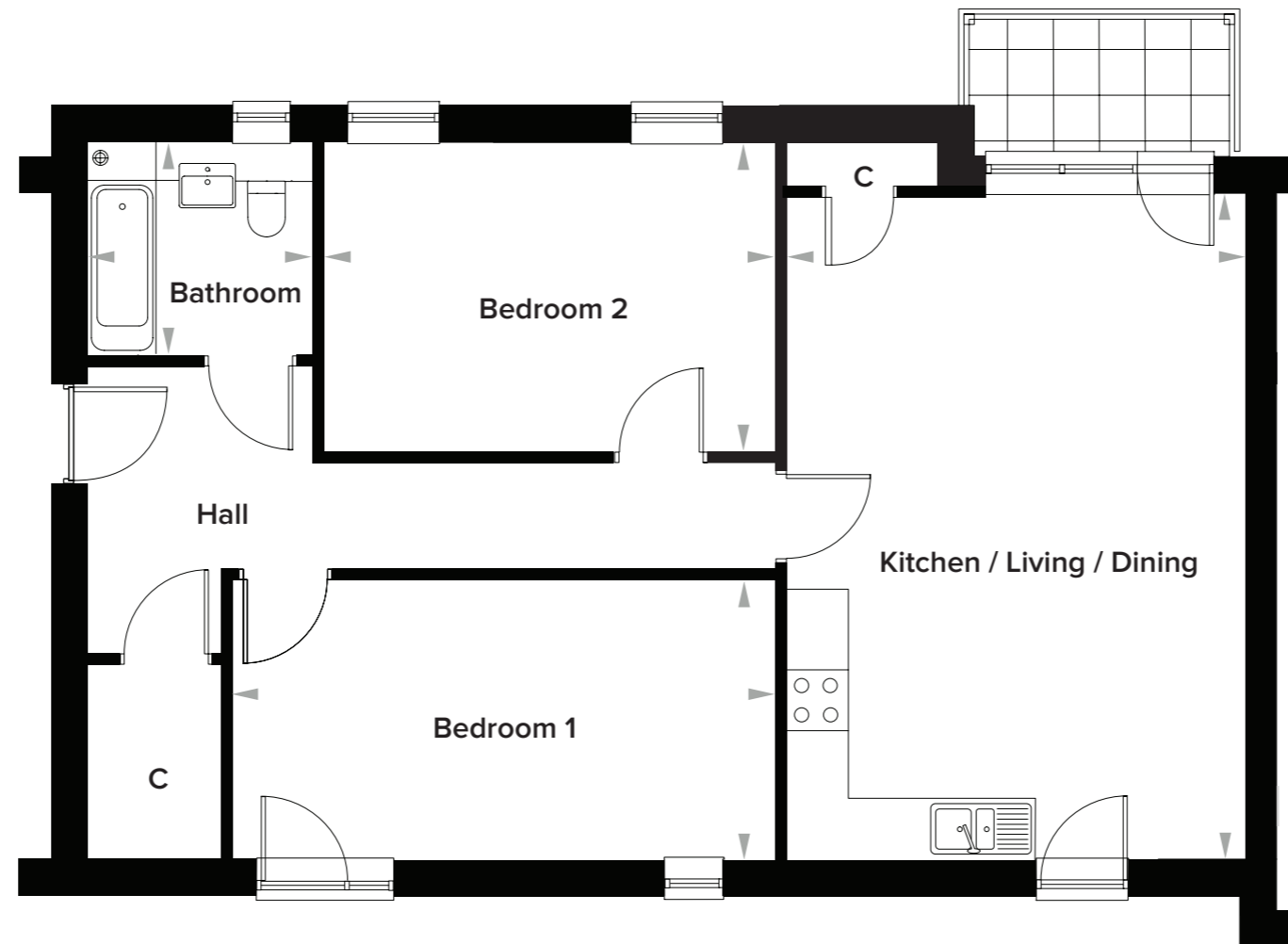
Bedroom 1	5003mm x 3509mm	16' 5" x 11' 6"
Wardrobe	2289mm x 1652mm	7' 6" x 5' 5"

Ebbfleet Cross, Kent

2 Bedroom Flat (Plots 13, 20 & 27)



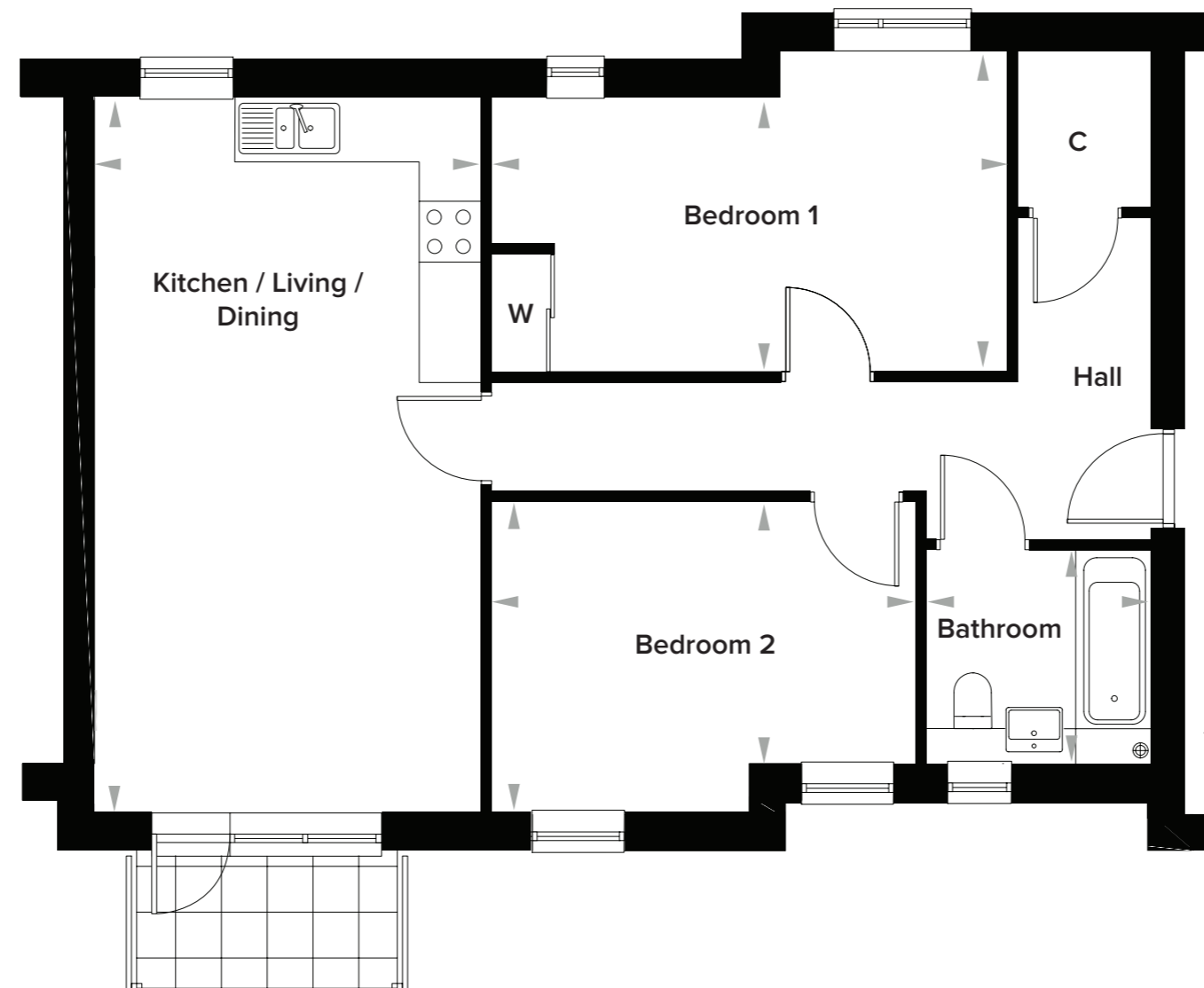
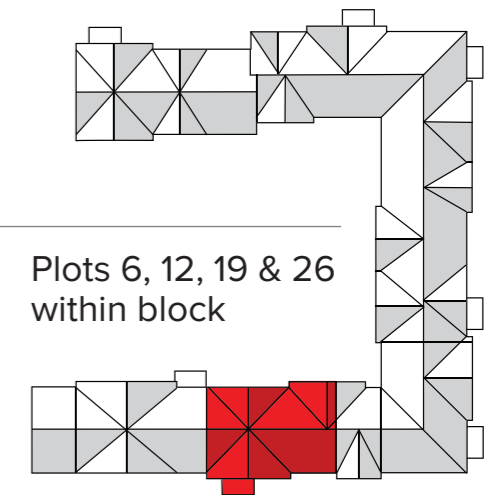
No lift provision for plots 13, 20 & 27



Kitchen / Living / Dining	6526mm x 4506mm	21' 5" x 14' 9"	Bedroom 1	5403mm x 2780mm	17' 9" x 9' 1"
Bathroom	2200mm x 2050mm	7' 3" x 6' 9"	Bedroom 2	4503mm x 3052mm	14' 9" x 10' 0"

Ebbfleet Cross, Kent

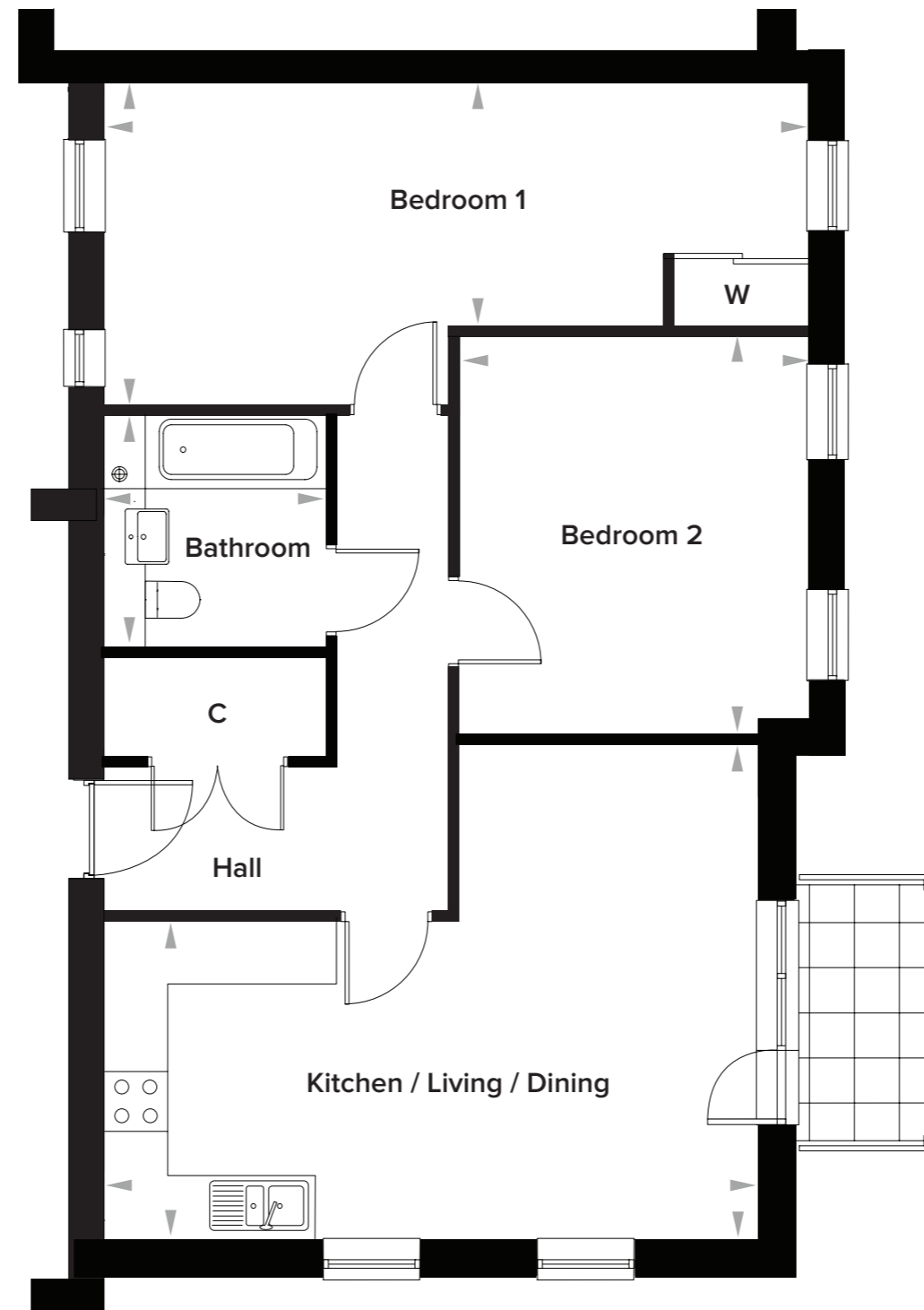
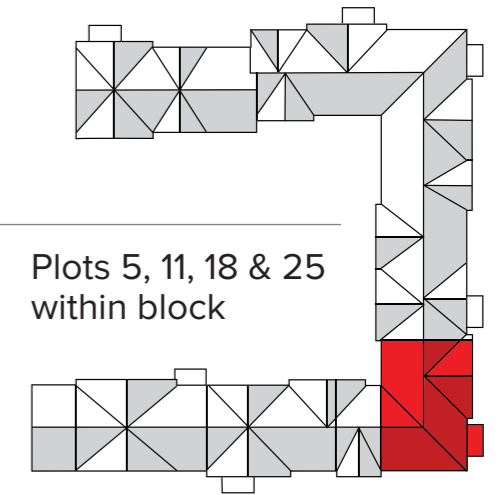
2 Bedroom Flat (Plots 6, 12, 19 & 26)



Kitchen / Living / Dining	6936mm x 3704mm	22' 9" x 12' 2"	Bedroom 1	5062mm x 3200 / 2761mm	16' 7" x 10' 6" / 9' 1"
Bathroom	2200mm x 2050mm	7' 3" x 6' 8"	Bedroom 2	4162mm x 2943 / 2493mm	13' 8" x 9' 8" / 8' 2"

Ebbfleet Cross, Kent

2 Bedroom Flat (Plots 5, 11, 18 & 25)



Kitchen / Living / Dining	6160mm x 4668 / 2938mm	20' 3" x 15' 4" / 9' 8"	Bedroom 1	6507mm x 2289 / 3035mm	21' 4" x 7' 6" / 9' 11"
Bathroom	2200mm x 2050mm	7' 3" x 6' 8"	Bedroom 2	3226mm x 3778mm	12' 5" x 10' 7"