



A selection of stunning two bedroom homes in Gittisham, Honiton. Available with shared ownership.



Hayne Farm

Hayne Lane, Gittisham,
Honiton EX14



Call **0300 330 0718**
Visit **[sovereignliving.org.uk](https://www.sovereignliving.org.uk)**

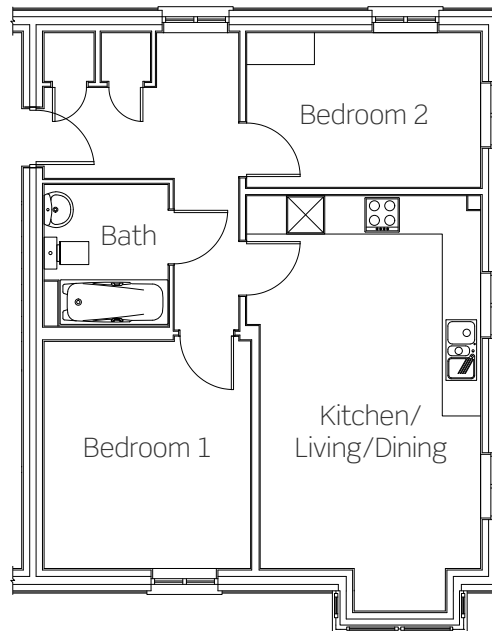
Hayne Farm The Monkton

Ideally situated on the edge of the East Devon Area of Outstanding Natural Beauty, and with fantastic transport links to neighbouring Exeter, Hayne Farm in Gittisham is a wonderful place to call home.

Plot 85

This new home benefits from:

- Modern open-plan kitchen, living and dining space
- Stylish fitted kitchen with oven, hob & extractor
- Convenient built-in storage
- Security entry system to building
- Bike storage
- Allocated parking



Plot 85: Ground floor

Kitchen/Living/Dining	3502mm x 5877mm
Bedroom one	3284mm x 3617mm
Bedroom two	3502mm x 2476mm

All dimensions are maximum.

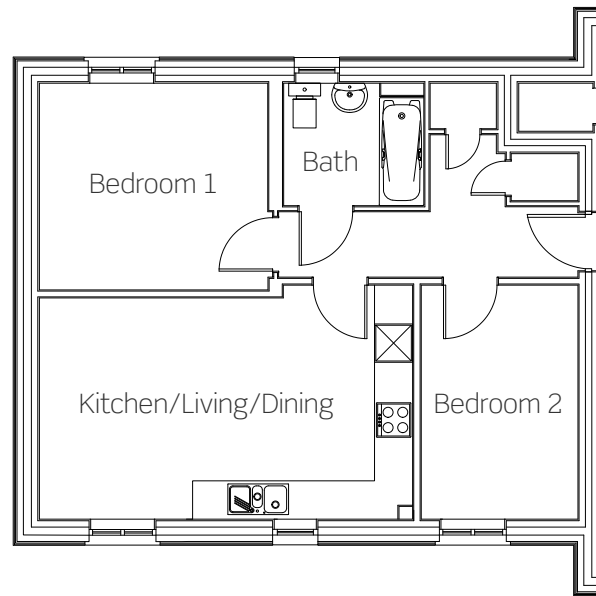
Hayne Farm The Farway

Ideally situated on the edge of the East Devon Area of Outstanding Natural Beauty, and with fantastic transport links to neighbouring Exeter, Hayne Farm in Gittisham is a wonderful place to call home.

Plots 86 & 88

These new homes benefit from:

- Modern open-plan kitchen, living and dining space
- Stylish fitted kitchen with oven, hob & extractor
- Convenient built-in storage
- Security entry system to building
- Bike storage
- Allocated parking



Plot 86: First floor

Kitchen/Living/Dining	5874mm x 3505mm
Bedroom one	3617mm x 3275mm
Bedroom two	2490mm x 3502mm

Floor plan shows Plot 86,
other Plots may vary.
All dimensions are maximum.

Plot 86: First floor
Plot 88: Second floor

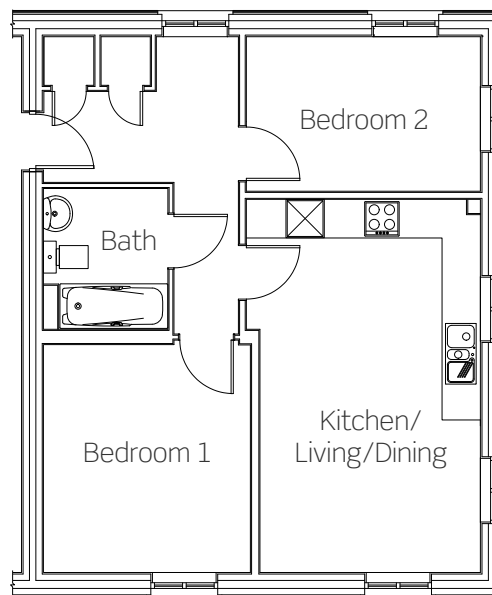
Hayne Farm The Cotleigh

Ideally situated on the edge of the East Devon Area of Outstanding Natural Beauty, and with fantastic transport links to neighbouring Exeter, Hayne Farm in Gittisham is a wonderful place to call home.

Plots 87 & 89

These new homes benefit from:

- Modern open-plan kitchen, living and dining space
- Stylish fitted kitchen with oven, hob & extractor
- Convenient built-in storage
- Security entry system to building
- Bike storage
- Allocated parking



Plot 87: First floor

Kitchen/Living/Dining	3502mm x 5877mm
Bedroom one	3284mm x 3617mm
Bedroom two	3703mm x 2465mm




Floor plan shows Plot 87,
other Plots may vary.
All dimensions are maximum.

Plot 87: First floor
Plot 89: Second floor

Hayne Farm

Hayne Lane,
Gittisham,
Honiton EX14

Call **0300 330 0718**
Visit sovereignliving.org.uk

-  Plots 51 & 52
The Offwell
1 bedroom maisonette
-  Plots 53, 73 & 74
The Combe
2 bedroom house
-  Plot 84
The Weston
2 bedroom apartment
- Plot 85
The Monkton
2 bedroom apartment
- Plots 86 & 88
The Farway
2 bedroom apartment
- Plots 87 & 89
The Cotleigh
2 bedroom apartment



Price list & availability

Plot	Property details	Price	40% share	Monthly rent	Estimated monthly service charge	Availability
85	Two bed ground floor flat with one parking space	£165,000	£66,000	£226.88	£79.04	NOW
87	Two bed first floor flat with one parking space	£165,000	£66,000	£226.88	£79.04	NOW
88	Two bed second floor flat with one parking space	£160,000	£64,000	£220.00	£79.04	NOW
89	Two bed second floor flat with one parking space	£165,000	£66,000	£226.88	£79.04	NOW

Hayne Farm
Gittisham

0300 330 0718
living@sovereign.org.uk