



ROSEWOOD PARK

PHASE THREE

BEXHILL-ON-SEA

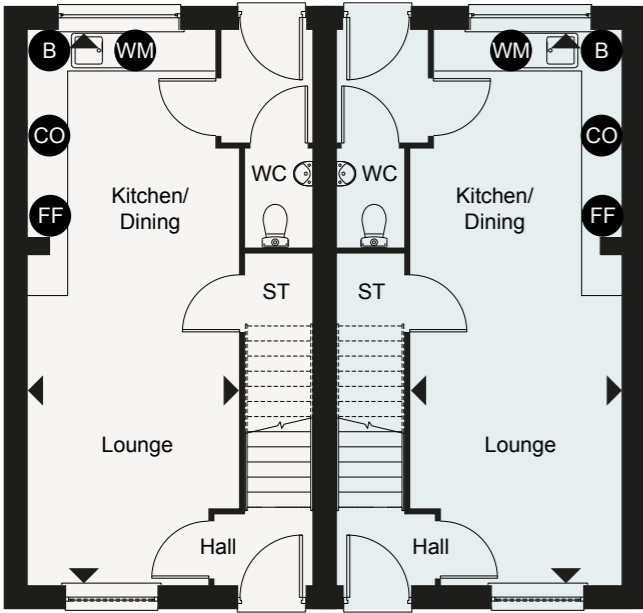
Shared Ownership Apartments & Houses from



BUILDING HOMES
MAKING PLACES
ENHANCING LIVES

HOUSE FLOOR PLANS & ELEVATIONS

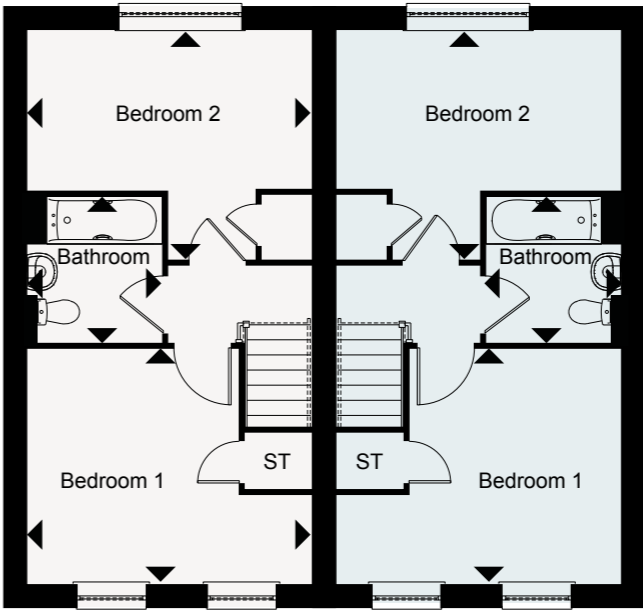
5, 7, 15 & 17 CLERVAUX CLOSE, BEXHILL TN39 4FX
Two-bedroom houses



Ground floor

DIMENSIONS
Gross Internal Area
70m² / 753ft²
KITCHEN/DINING/
LOUNGE
3.15m x 8.20m
10'4" x 26'11"
CO = Cooker
FF = Fridge Freezer
WM = Washing Machine
ST = Storage
WC = Water Closet
B = Boiler

5, 7, 15 & 17 CLERVAUX CLOSE, BEXHILL TN39 4FX
Two-bedroom houses



First floor

DIMENSIONS
BEDROOM 1
3.49m x 4.25m
10'5" x 13'11"
BEDROOM 2
2.41m x 4.25m
7'11" x 13'11"
BATHROOM
2.04m x 2.18m
6'8" x 7'2"

FRONT ELEVATIONS



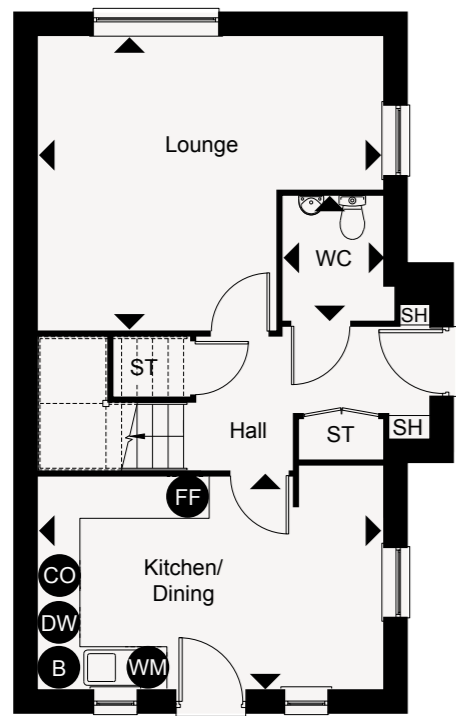
5 & 15

7 & 17



HOUSE FLOOR PLANS & ELEVATIONS

9 Clervaux Close, Bexhill TN39 4FX
Three-bedroom house



Ground floor

DIMENSIONS

Gross Internal Area
98m² / 1054ft²

KITCHEN / DINING

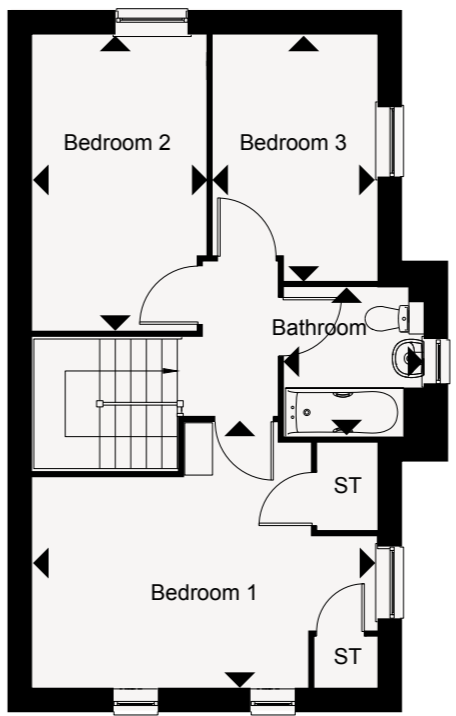
3.24m x 5.02m
10'8" x 16'5"

LOUNGE

3.24m x 5.02m
10'8" x 16'5"

CO = Cooker
FF = Fridge Freezer
WM = Washing Machine
DW = Space for Dishwasher
ST = Storage
WC = Water Closet
SH = Shelf
B = Boiler

9 Clervaux Close, Bexhill TN39 4FX
Three-bedroom house



First floor

DIMENSIONS

BEDROOM 1
3.08m x 5.02m
10'1" x 16'5"

BEDROOM 2
2.56m x 4.29m
8'5" x 14'1"

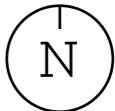
BEDROOM 3
2.40m x 3.57m
7'10" x 11'9"

BATHROOM
2.04m x 2.18m
6'9" x 7'2"

FRONT ELEVATION

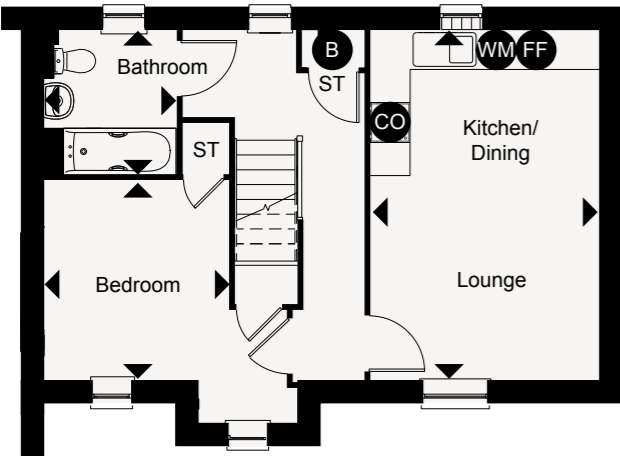


9



APARTMENT FLOOR PLANS & ELEVATIONS

13 Clervaux Close, Bexhill TN39 4FX
One-bedroom coach house apartment



First floor

DIMENSIONS

Gross Internal Area
63m² / 678ft²

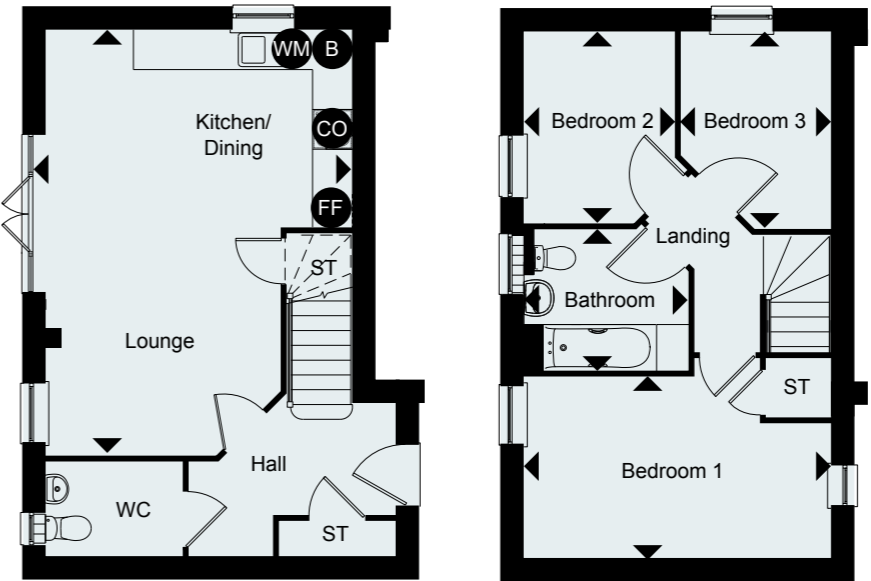
Kitchen/Dining/
Lounge
3.50m x 5.36m
11'6" x 17'7"

Bedroom
3.70m x 3.70m
12'2" x 12'2"

Bathroom
2.03m x 2.22m
6'8" x 7'4"

CO = Cooker
FF = Fridge Freezer
WM = Washing Machine
ST = Storage
B = Boiler

11 Clervaux Close, Bexhill TN39 4FX
Three-bedroom house



Ground floor

First floor

DIMENSIONS

Gross Internal Area
76m² / 818ft²

Bedroom 1
3.07m x 4.68m
10'1" x 15'4"

Bedroom 2
2.31m x 2.94m
7'7" x 9'8"

Bedroom 3
2.31m x 3.11m
7'7" x 10'2"

Bathroom
2.16m x 2.52m
7'1" x 8'3"

CO = Cooker
FF = Fridge Freezer
WM = Washing Machine
ST = Storage
WC = Water Closet
B = Boiler

FRONT ELEVATIONS

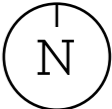


11

13



13
11



Get in touch



Tel : 0800 012 1442
sales@optivo.org.uk
optivosales.co.uk



Disclaimer: All floor plans in this brochure are for general guidance only. Measures are from plans and 'as built' dimensions may vary slightly. Any dimensions shown are not intended to be used for carpet sizes, appliances, spaces or items of furniture. These particulars do not constitute any part of an offer or contract. Optivo has taken all reasonable care in the preparation of the information given in this brochure. However, this information is subject to change and has been prepared solely for the purpose of providing general guidance. Therefore, Optivo does not warrant the accuracy or completeness of this information. Particulars are given for illustrative purposes only. Optivo undertakes continuous product development and any information given relating to our products may vary from time to time. As a result, information on such products is given for general guidance only and does not constitute any form of warranty or contract on our part. The information and particulars set out within this brochure do not constitute, nor constitute part of, a formal offer, invitation or contract (whether from Optivo or any of its related subsidiaries or affiliates) to acquire the relevant property. For the reasons mentioned above, no information contained in this brochure is to be relied upon. In particular all plans, perspectives, descriptions, dimensions and measurements are approximate and provided for guidance only.

Such information is given without responsibility on the part of Optivo. Optivo supports the development of mixed tenure developments and is proud to provide homes for affordable rent and Shared Ownership at Rosewood Park. We may change the tenure of some homes subject to demand.