



RADIAN HOMES AT  
CENTENARY  
QUAY  
WOOLSTON

**The Westwood**  
2 bedroom apartment

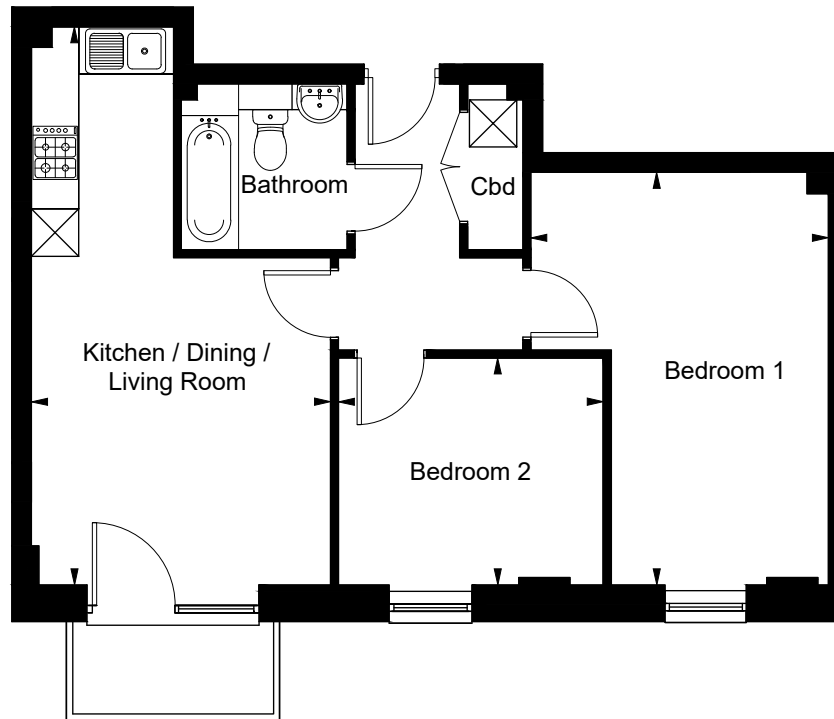


Backed by  
HM Government



# The Westwood

Plots 5076, 5080



RADIAN HOMES AT  
CENTENARY  
QUAY  
WOOLSTON

## The Westwood

2 bedroom apartment

Kitchen / Dining / Living Room

3.78m x 7.07m    12'5 x 23'2

Bedroom 1

3.77m x 5.22m    12'4 x 17'2

Bedroom 2

3.35m x 2.87m    11'0 x 9'5

 John Thornycroft Road, Woolston,  
Southampton, SO19 9UE

0800 145 6663

[radianhomes.co.uk/centenaryquay](https://www.radianhomes.co.uk/centenaryquay)

Images may be computer generated and are for illustrative purposes only, so may not be representative of exact plots. Images may be of a different model of home. Floor plans are not to scale and are indicative only. Location of windows, doors, kitchen units and appliances may differ. Doors may swing in the opposite direction to that shown on selected houses. Dimensions, which are taken from the indicated points of measurement, are for guidance only and are not intended to be used to calculate space for items of furniture. Total areas are provided as gross internal areas and are subject to variance. Please note, some plots may be handed, speak to a Sales Co-ordinator for further information. Correct at time of creation – February 2020. Radian and Radian Homes are trading names of The Swaythling Housing Society Limited, a Registered Society under the Co-operative and Community Benefit Societies Act 2014 (registration number 10237R) and a registered provider with the Regulator of Social Housing (registration number L0689). Registered office: Collins House, Bishopstoke Road, Eastleigh, Hampshire SO50 6AD. Authorised and regulated by the Financial Conduct Authority. Part of the Radian group of companies. The Swaythling Housing Society Limited provides management services for subsidiaries in the Radian group. Further corporate information is available at [www.radian.co.uk](http://www.radian.co.uk).

