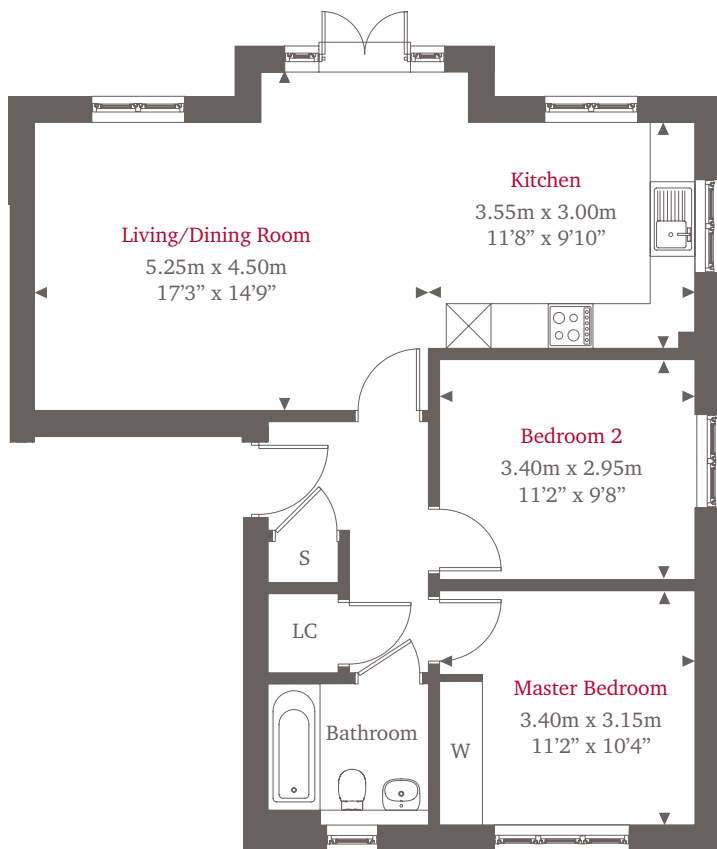


Introducing Maple House - The Apartments



Internal photography indicative only.



Plots 4 + 6 2 bedroom apartment

Shanly Homes is extremely proud to present Maple House at Great Oaks, a fine collection of just five Shared Partnership 2 bedroom apartments set within a development of exquisite new homes in the sought-after village of Bookham in Surrey.

Plots 4 & 6 are located on the ground and first floors of Maple House and provide the very best of contemporary living, with a large open-plan kitchen/living/dining room, fitted with quality integrated appliances and enjoying plenty of light from a number of windows and large French doors which open onto a private balcony or terrace.

The Master bedroom is complete with a large fitted wardrobe and outside there is a private allocated parking space.

For more information please call **01372 225007**
shanlypartnership.com

◀ Point from which maximum dimensions are measured. Dimensions are intended for guidance only and may vary by plus or minus 7.6cm/3". The plots indicate general layout only which may vary from other plots. Kitchen and bathroom layouts indicative only. W denotes wardrobe. S denotes storage. Please contact sales consultant for more information.

SHANLY
PARTNERSHIP
HOMES