A large, stylized number '1234' is the central graphic element. The number is white with a thick, dark outline. The interior of the number is filled with various floral patterns. The '1' features a large pink rose. The '2' has a white flower with yellow stamens. The '3' is filled with a purple and white floral pattern. The '4' has a white flower with yellow stamens. The background is a solid light purple color.

1, 2, 3 & 4 bedroom  
homes available through  
shared ownership

# ROSE GARDEN

CRANLEIGH

TIME TO BLOSSOM

Some days you will look out of the window and feel like pinching yourself – just to make sure that such lovely surroundings aren’t just a dream!







# 1 bedroom apartments

Plots 263\*, 264\*, 316 & 317  
Total Internal Area 51.7m<sup>2</sup> / 770.37ft<sup>2</sup>



\*Opposite handing from illustration shown

- Kitchen / Living**  
3.72m x 6.69m    12'2" x 21'1"
- Bedroom I**  
3.98m x 3.39m    13'0" x 11'1"
- Bathroom**  
2.26m x 2.06m    7'4" x 6'9"

DW Dishwasher FF Fridge/Freezer C Cupboard  
CK Cooker W Wardrobe AC Airing Cupboard



First  
plots 317 & 264

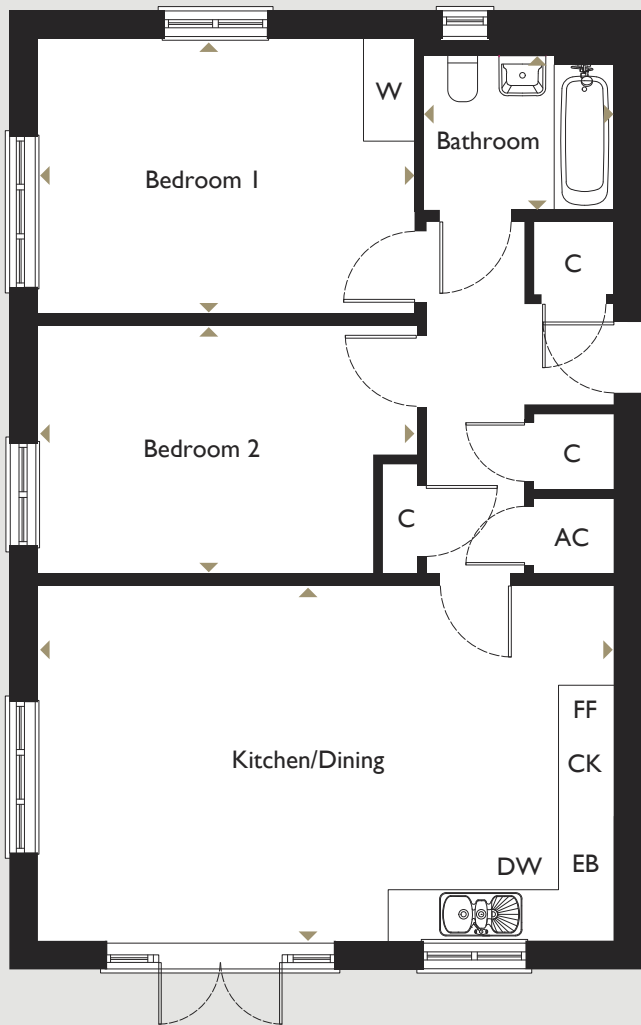
Ground  
plots 316 & 263

Disclaimer: Apartment layouts provide approximate measurements only. Dimensions, which are taken from the indicated points of measurement, are for guidance only and are not intended to be used for carpet sizes, appliance space or items of furniture. Apartment areas are provided as gross internal areas and may vary. Bathroom and kitchen layouts are indicative only and are subject to change. Wardrobe size and position may vary. Ceiling height may vary within selected apartments, please speak to the sales team for more information. All private outdoor space dimensions and areas are approximate and may vary. The information contained within this document does not constitute part of any offer, contract or warranty. Whilst the plans have been prepared with all due care for the convenience of the intending purchaser, the information contained herein is a preliminary guide only.



# 2 bedroom apartment

Plots 261\*, 262\*, 273, 274, 318\* & 319\*  
Total Internal Area 71.57m<sup>2</sup> / 770.37ft<sup>2</sup>



\*Opposite handing from illustration shown

- Kitchen/Dining**  
6.81m x 4.22m    22'4" x 13'10"
- Bedroom I**  
4.46m x 3.27m    14'8" x 10'9"
- Bedroom 2**  
4.46m x 2.97m    14'8" x 9'9"
- Bathroom**  
2.26m x 2.06m    7'5" x 6'9"

DW Dishwasher FF Fridge/Freezer C Cupboard  
CK Cooker W Wardrobe AC Airing Cupboard

First  
plots 262, 273 & 319

Ground  
plots 261, 273 & 318

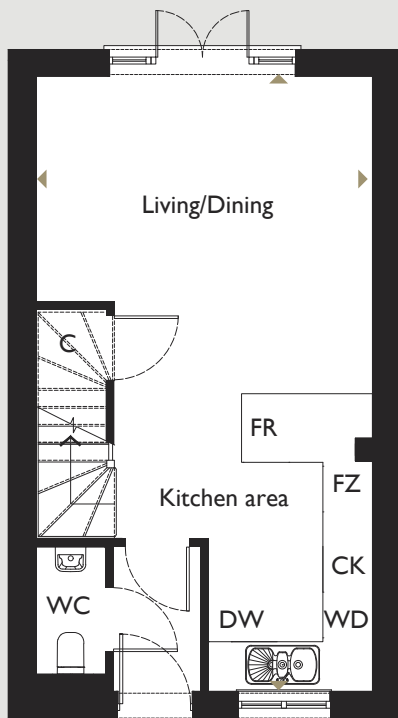


Disclaimer: Apartment layouts provide approximate measurements only. Dimensions, which are taken from the indicated points of measurement, are for guidance only and are not intended to be used for carpet sizes, appliance space or items of furniture. Apartment areas are provided as gross internal areas and may vary. Bathroom and kitchen layouts are indicative only and are subject to change. Wardrobe size and position may vary. Ceiling height may vary within selected apartments, please speak to the sales team for more information. All private outdoor space dimensions and areas are approximate and may vary. The information contained within this document does not constitute part of any offer, contract or warranty. Whilst the plans have been prepared with all due care for the convenience of the intending purchaser, the information contained herein is a preliminary guide only.

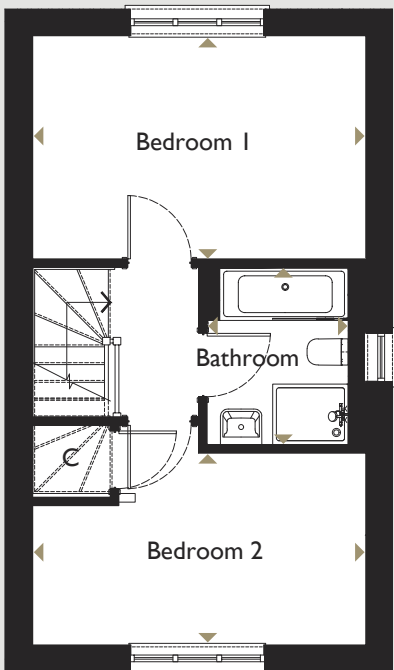


# 2 bedroom house

Plots 266, 267, 279, 280\*, 281, 282\*, 290, 291\*, 292, 293\*, 295, 296, 297, 299, 309\*, 310 & 311\*  
Total Internal Area 71.06m<sup>2</sup> / 764.88ft<sup>2</sup>



Ground



First

\*Opposite handing from illustration shown

- Kitchen/Living/Dining**  
8.11m x 4.47m    26'7" x 14'8"
- Bedroom 1**  
4.47m x 2.99m    14'8" x 9'10"
- Bedroom 2**  
4.47m x 2.58m    14'8" x 8'5"
- Bathroom**  
2.36m x 2.30m    7'8" x 7'6"

DW Dishwasher   FR Fridge   FZ Freezer   WD Washer/Dryer  
C Cupboard   CK Cooker   W Wardrobe

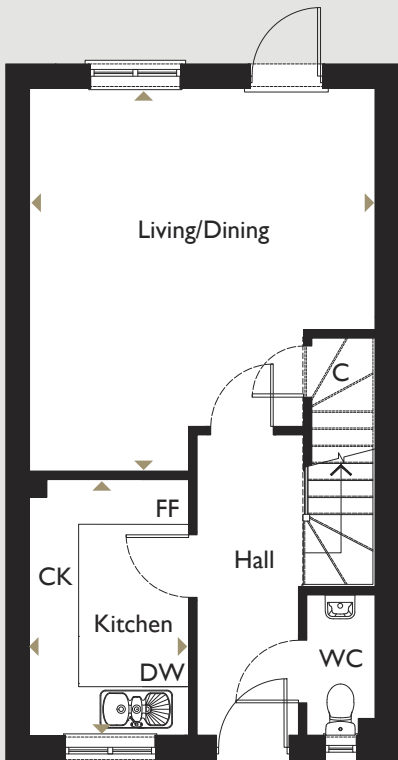


Disclaimer: House layouts provide approximate measurements only. Dimensions, which are taken from the indicated points of measurement, are for guidance only and are not intended to be used for carpet sizes, appliance space or items of furniture. House areas are provided as gross internal areas and may vary. Bathroom and kitchen layouts are indicative only and are subject to change. Wardrobe size and position may vary. Ceiling height may vary within selected houses, please speak to the sales team for more information. All private outdoor space dimensions and areas are approximate and may vary. The information contained within this document does not constitute part of any offer, contract or warranty. Whilst the plans have been prepared with all due care for the convenience of the intending purchaser, the information contained herein is a preliminary guide only.

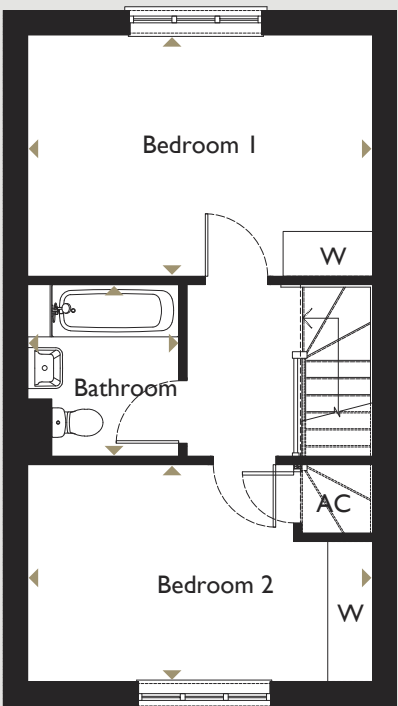


# 2 bedroom house

Plots 312\*, 313, 314\* & 315  
Total Internal Area 80.38m<sup>2</sup> / 865.2ft<sup>2</sup>



Ground



First

\*Opposite handing from illustration shown

- Living/Dining**  
5.08m x 4.68m    16.8" x 15'4"
- Kitchen**  
2.16m x 3.46m    7'1" x 11'2"
- Bedroom 1**  
4.68m x 3.27m    15'4" x 10'8"
- Bedroom 2**  
4.68m x 2.94m    15'4" x 9'7"
- Bathroom**  
2.32m x 2.06m    7'3" x 6'9"

DW Dishwasher   FF Fridge/Freezer   C Cupboard  
CK Cooker   W Wardrobe   AC Airing Cupboard



Disclaimer: House layouts provide approximate measurements only. Dimensions, which are taken from the indicated points of measurement, are for guidance only and are not intended to be used for carpet sizes, appliance space or items of furniture. House areas are provided as gross internal areas and may vary. Bathroom and kitchen layouts are indicative only and are subject to change. Wardrobe size and position may vary. Ceiling height may vary within selected houses, please speak to the sales team for more information. All private outdoor space dimensions and areas are approximate and may vary. The information contained within this document does not constitute part of any offer, contract or warranty. Whilst the plans have been prepared with all due care for the convenience of the intending purchaser, the information contained herein is a preliminary guide only.



## 2 bedroom house

Plots 300\*, 301, 302\*, 303, 304\*, 305, 306\* & 307

Total Internal Area 80.7m<sup>2</sup> / 868.65ft<sup>2</sup>



\*Opposite handing from illustration shown

<b>Living/Dining</b>		
4.68m x 4.46m	15'4" x 14'8"	
<b>Kitchen</b>		
3.78m x 1.81m	12'5" x 5'11"	
<b>Bedroom 1</b>		
4.56m x 4.46m	14'11" x 14'7"	
<b>Bedroom 2</b>		
4.46m x 2.64m	14'7" x 8'8"	
<b>Bathroom</b>		
2.62m x 2.13m	8'7" x 6'11"	

DW Dishwasher FF Fridge/Freezer WD Washer/Dryer B Boiler  
EB Eco bin C Cupboard CK Cooker W Wardrobe



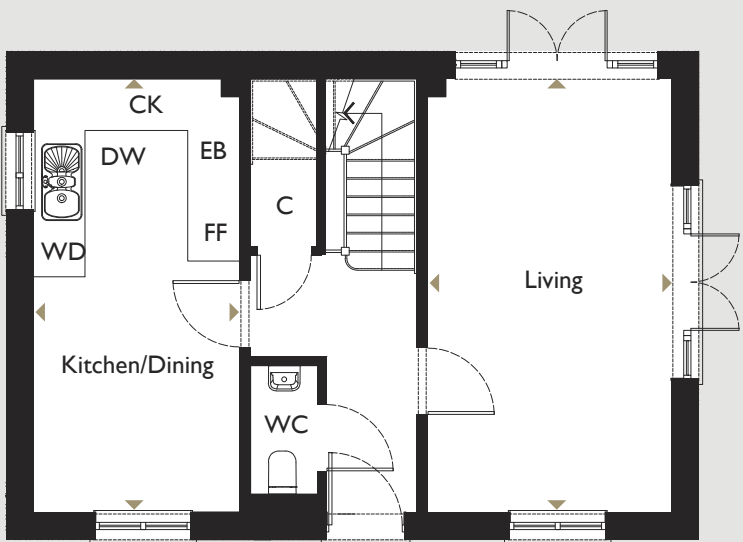
Disclaimer: House layouts provide approximate measurements only. Dimensions, which are taken from the indicated points of measurement, are for guidance only and are not intended to be used for carpet sizes, appliance space or items of furniture. House areas are provided as gross internal areas and may vary. Bathroom and kitchen layouts are indicative only and are subject to change. Wardrobe size and position may vary. Ceiling height may vary within selected houses, please speak to the sales team for more information. All private outdoor space dimensions and areas are approximate and may vary. The information contained within this document does not constitute part of any offer, contract or warranty. Whilst the plans have been prepared with all due care for the convenience of the intending purchaser, the information contained herein is a preliminary guide only.



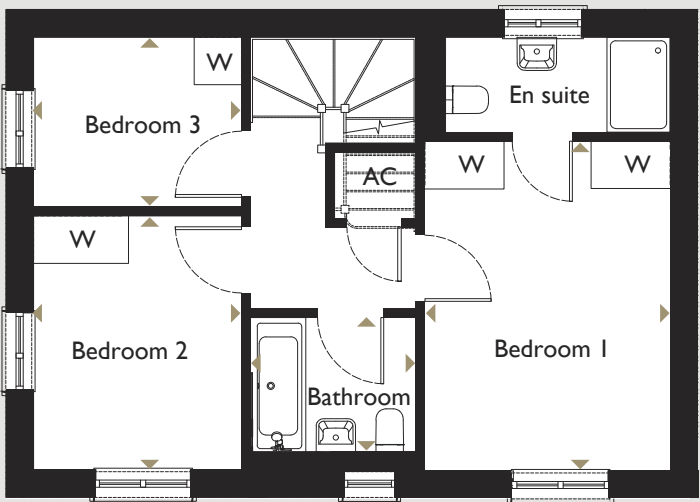
## 3 bedroom house

Plot 270

Total Internal Area 88.2m<sup>2</sup> / 949ft<sup>2</sup>



Ground



First

<b>Living area</b>		
5.53m x 3.12m	18'2" x 10'3"	
<b>Kitchen/Dining</b>		
5.52m x 2.64m	18'1" x 8'8"	
<b>Bedroom 1</b>		
4.19m x 3.14m	13'9" x 10'3"	
<b>Bedroom 2</b>		
3.12m x 2.67m	21'5" x 8'10"	
<b>Bedroom 3</b>		
3.25m x 2.67m	10'8" x 8'10"	
<b>Bathroom</b>		
2.12m x 1.96m	6'11" x 6'5"	

DW Dishwasher FF Fridge/Freezer WD Washer/Dryer EB Eco bin  
C Cupboard CK Cooker W Wardrobe AC Airing Cupboard

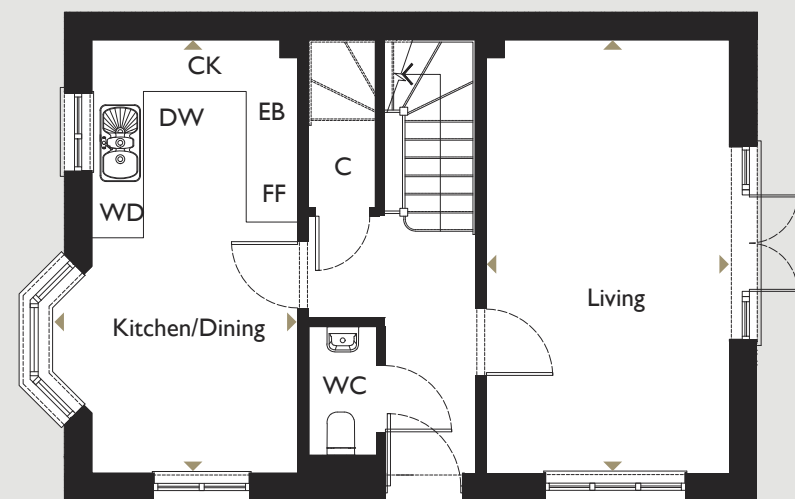


Disclaimer: House layouts provide approximate measurements only. Dimensions, which are taken from the indicated points of measurement, are for guidance only and are not intended to be used for carpet sizes, appliance space or items of furniture. House areas are provided as gross internal areas and may vary. Bathroom and kitchen layouts are indicative only and are subject to change. Wardrobe size and position may vary. Ceiling height may vary within selected houses, please speak to the sales team for more information. All private outdoor space dimensions and areas are approximate and may vary. The information contained within this document does not constitute part of any offer, contract or warranty. Whilst the plans have been prepared with all due care for the convenience of the intending purchaser, the information contained herein is a preliminary guide only.

# Rg 3 bedroom house

Plots 268\* & 269

Total Internal Area 88.91m<sup>2</sup> / 957ft<sup>2</sup>



Ground



First

\*Opposite handing from illustration shown

- Living area**  
5.52m x 3.12m 18'1" x 10'3"
- Kitchen/Dining**  
5.52m x 2.64m 18'1" x 8'8"
- Bedroom 1**  
4.19m x 3.14m 13'9" x 10'3"
- Bedroom 2**  
3.12m x 2.67m 21'5" x 8'10"
- Bedroom 3**  
3.25m x 2.67m 10'8" x 8'10"
- Bathroom**  
2.12m x 1.96m 6'11" x 6'5"

DW Dishwasher FF Fridge/Freezer WD Washer/Dryer EB Eco bin  
C Cupboard CK Cooker W Wardrobe AC Airing Cupboard

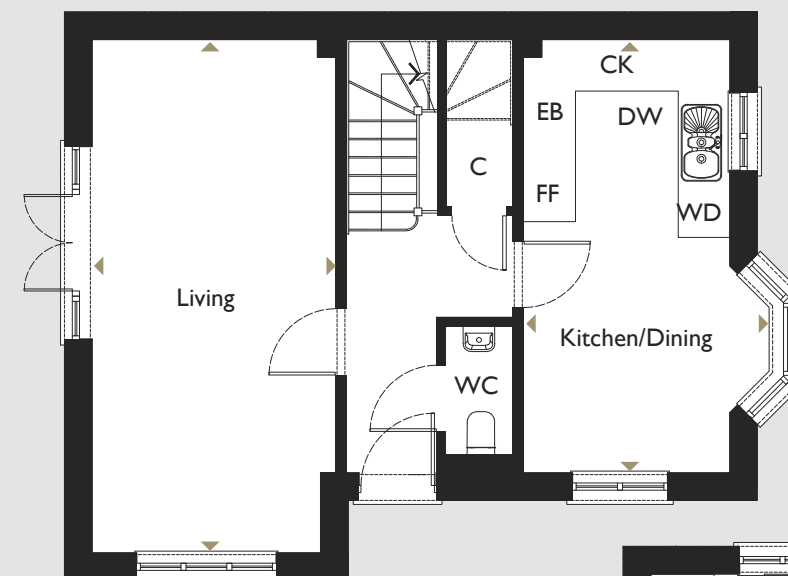


Disclaimer: House layouts provide approximate measurements only. Dimensions, which are taken from the indicated points of measurement, are for guidance only and are not intended to be used for carpet sizes, appliance space or items of furniture. House areas are provided as gross internal areas and may vary. Bathroom and kitchen layouts are indicative only and are subject to change. Wardrobe size and position may vary. Ceiling height may vary within selected houses, please speak to the sales team for more information. All private outdoor space dimensions and areas are approximate and may vary. The information contained within this document does not constitute part of any offer, contract or warranty. Whilst the plans have been prepared with all due care for the convenience of the intending purchaser, the information contained herein is a preliminary guide only.

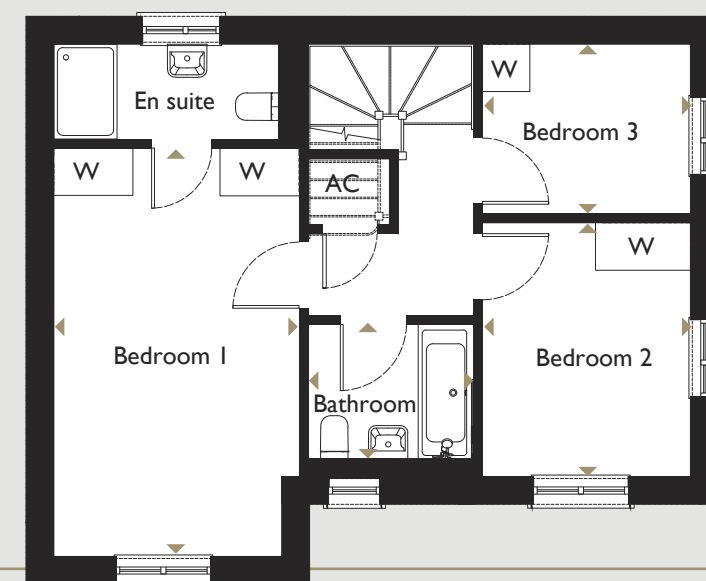
# Rg 3 bedroom house

Plots 289, 294, 298\* & 308\*

Total Internal Area 94.75m<sup>2</sup> / 1019ft<sup>2</sup>



Ground



First

\*Opposite handing from illustration shown

- Living area**  
6.54m x 3.12m 21'5" x 10'3"
- Kitchen/Dining**  
5.52m x 2.65m 18'1" x 8'8"
- Bedroom 1**  
6.53m x 3.14m 21'5" x 10'3"
- Bedroom 2**  
6.54m x 3.12m 21'5" x 10'3"
- Bedroom 3**  
3.25m x 2.67m 10'8" x 8'9"
- Bathroom**  
2.65m x 2.18m 8'8" x 7'2"

DW Dishwasher FF Fridge/Freezer WD Washer/Dryer EB Eco bin  
C Cupboard CK Cooker W Wardrobe AC Airing Cupboard



Disclaimer: House layouts provide approximate measurements only. Dimensions, which are taken from the indicated points of measurement, are for guidance only and are not intended to be used for carpet sizes, appliance space or items of furniture. House areas are provided as gross internal areas and may vary. Bathroom and kitchen layouts are indicative only and are subject to change. Wardrobe size and position may vary. Ceiling height may vary within selected houses, please speak to the sales team for more information. All private outdoor space dimensions and areas are approximate and may vary. The information contained within this document does not constitute part of any offer, contract or warranty. Whilst the plans have been prepared with all due care for the convenience of the intending purchaser, the information contained herein is a preliminary guide only.

# Rg 3 bedroom house

Plot 265  
Total Internal Area 94.75m<sup>2</sup> / 1019.88ft<sup>2</sup>



**Living area**  
6.48m x 3.09m    21'2" x 10'2"

**Kitchen/Dining**  
5.52m x 2.65m    18'1" x 8'8"

**Bedroom 1**  
6.53m x 3.12m    21'5" x 10'3"

**Bedroom 2**  
2.64m x 2.18m    8'8" x 7'2"

**Bedroom 3**  
3.25m x 2.64m    10'8" x 8'8"

**Bathroom**  
2.12m x 1.96m    6'11" x 6'5"

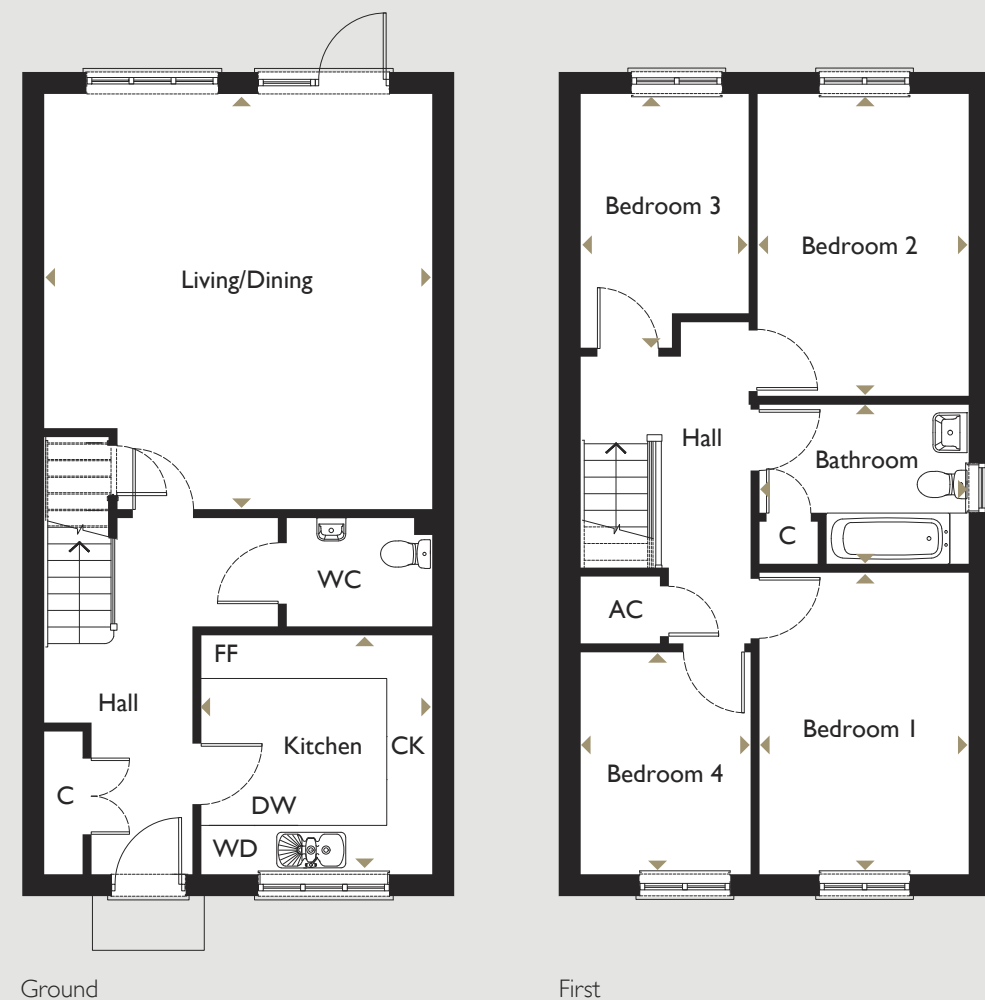
**DW** Dishwasher **FF** Fridge/Freezer **WD** Washer/Dryer **EB** Eco bin  
**C** Cupboard **CK** Cooker **W** Wardrobe **AC** Airing Cupboard



Disclaimer: House layouts provide approximate measurements only. Dimensions, which are taken from the indicated points of measurement, are for guidance only and are not intended to be used for carpet sizes, appliance space or items of furniture. House areas are provided as gross internal areas and may vary. Bathroom and kitchen layouts are indicative only and are subject to change. Wardrobe size and position may vary. Ceiling height may vary within selected houses, please speak to the sales team for more information. All private outdoor space dimensions and areas are approximate and may vary. The information contained within this document does not constitute part of any offer, contract or warranty. Whilst the plans have been prepared with all due care for the convenience of the intending purchaser, the information contained herein is a preliminary guide only.

# Rg 4 bedroom house

Plots 277 & 278\*  
Total Internal Area 113.4m<sup>2</sup> / 1220.63ft<sup>2</sup>



\*Opposite handing from illustration shown

**Living/Dining**  
5.74m x 5.36m    18'10" x 17'7"

**Kitchen**  
3.31m x 3.20m    10'10" x 10'6"

**Bedroom 1**  
4.17m x 2.90m    13'8" x 9'6"

**Bedroom 2**  
4.18m x 2.93m    13'9" x 9'8"

**Bedroom 3**  
3.52m x 2.33m    11'7" x 7'8"

**Bedroom 4**  
3.07m x 2.37m    10'7" x 7'9"

**Bathroom**  
2.93m x 2.22m    9'8" x 7'3"

**DW** Dishwasher **FF** Fridge/Freezer  
**WD** Washer/Dryer **C** Cupboard  
**CK** Cooker **W** Wardrobe **AC** Airing Cupboard



Disclaimer: House layouts provide approximate measurements only. Dimensions, which are taken from the indicated points of measurement, are for guidance only and are not intended to be used for carpet sizes, appliance space or items of furniture. House areas are provided as gross internal areas and may vary. Bathroom and kitchen layouts are indicative only and are subject to change. Wardrobe size and position may vary. Ceiling height may vary within selected houses, please speak to the sales team for more information. All private outdoor space dimensions and areas are approximate and may vary. The information contained within this document does not constitute part of any offer, contract or warranty. Whilst the plans have been prepared with all due care for the convenience of the intending purchaser, the information contained herein is a preliminary guide only.





# Shared Ownership with Southern Home Ownership

Shared ownership gives you all the advantages of home ownership on terms you can afford.

Shared ownership is a government-backed initiative, which could be your stepping stone onto the property ladder.

You initially purchase a share of a home through a mortgage and savings. You buy as much as you can afford, usually at least 25% and up to a maximum of 75%, and you pay a subsidised rent to us on the share that you don't own.

Even if you only purchase a share in your home, it will feel as if you owned it outright. And the great thing about shared ownership is that you can buy a larger share of the property whenever you can afford it. The more you own, the less rent you pay.

For more information on purchasing a shared ownership home, please visit our Southern Home Ownership website.

## We're easy to find

Our Sales Suite can be found at the entrance to Farrier Lane.

- Key:
- Showhome and Sales Office - Plot 289
  - Shared Ownership homes



Computer generated artist impression of Bow River Village, London

## Award winning developments

The environments we live in play a large part in shaping who we are. We immerse ourselves in the place we've chosen to live; the building itself and the community we share it with. So it's not surprising that these are the main features we look for when choosing a new home, and it's why Southern Home Ownership plan, develop and build high quality, desirable homes, bringing together people and places to create thriving communities.

As part of Southern Housing Group, one of the oldest and largest Housing Associations in the South East of England, we're proud to reinvest every penny we make in providing quality homes and services for our customers and local communities. Purchasing your new Southern Home Ownership home also contributes to the regeneration and development of homes and communities for others.

We're recognised as a leader in providing premium homes that shape the way people want to live. So we don't just build better buildings - we build better living.

[shosales.co.uk](http://shosales.co.uk)







0300 555 2171  
[www.shosales.co.uk](http://www.shosales.co.uk)