

Park Heights

Wella House, Basingstoke





CGI



Park Heights

Wella House, Basingstoke

The old market town of Basingstoke has grown rapidly over the last 50 years becoming home to some of the UK's biggest brands and businesses, as well as being a key commuter town in the south-east. Featuring plenty of opportunities for shopping, entertainment and dining out at The Malls and Festival Place, Basingstoke also benefits from fast travel connections across Hampshire and beyond by both rail and road.

Located south of the town centre with open parkland to the east of the development and good transport links to the local area and towards London, Park Heights offers an incredible choice of one, two and three bedroom apartments featuring unique layouts, centred around beautiful landscaped gardens. Homes include expansive floor to ceiling windows letting in natural light to complement the contemporary open plan kitchen, living and dining spaces, some of which feature balconies.

Brought to you by Guinness Homes, there will be over 50 homes for sale through Shared Ownership. It's an affordable way to buy your own home, perfect for commuters, individuals, couples and families wanting a stunning new home in Basingstoke.

Out and about

From shopping to dining,
family days out to fitness,
Basingstoke has it all.

A six minute drive from Basingstoke town centre, Park Heights is perfectly situated to enjoy this great shopping destination on your doorstep.

The Malls & Festival Place shopping centres form a large part of the town centre featuring big brands and household names. After shopping 'til you drop, you'll have plenty of choice for dinner from oozing cheesy burgers at Gourmet Burger Kitchen to a bowl of steaming ramen at Wagamama, before heading to the ten screen Vue cinema for a film or The Anvil theatre for a show.

All your everyday essentials are within a five minute walk or a six minute drive from Park Heights, such as Aldi, Sainsburys, Waitrose & Partners and Morrisons. You'll also have Costa Coffee and Nandos close by at Brington Retail Park.

Work out on your way to and from work at Anytime Fitness, located next to Basingstoke Station or roll out of bed to The Gym, located on your doorstep. Drop by Costa Coffee before heading to work or on the school run. Perfect for families, Park Heights is close to many Outstanding and Good Ofsted rated schools such as Dove House School, a ten minute drive, Oakridge Infant School, a six minute drive and St John's Primary School, just an 11 minute walk.



Festival Place shopping centre







Area photography



Blackdam Ponds

There's plenty to do throughout the year for everyone. Take to the indoor slopes at Skiplex, put on your skates at Planet Ice or brace yourself for an indoor skydive at iFly. The Aquadrome has pools for all abilities and fun for children at the Lagoon Pool.

Near Basingstoke's train station, the award winning Eastrop Park features a wildlife area, summer paddling pool and crazy golf. A collection of parks east of Park Heights is a great starting place to play, explore and spend time with family and friends outdoors. Crabtree Plantation, Basingstoke Common, Lime Pits and Blackdam Ponds are all within a nine minute drive away or travel further afield into the countryside to potter around quaint villages and hikes in the North Wessex Downs Area of Outstanding Natural Beauty. For thatched cottages, pub grub and an old-world atmosphere the village of Overton is a great afternoon out especially when visiting the nearby Bombay Sapphire Distillery for incredible gin experiences.



Bombay Sapphire Distillery



Pubs/restaurants/cafes

1. Parlour Tea Rooms
2. Bombay Sapphire Distillery
3. The Stag and Hounds Harvester
4. Andwell Brewing Company

Retail

5. Brington Hill Retail Park
6. The Malls
7. Festival Place
8. Berry Bros. & Rudd

Leisure/parks

9. Skizone
10. Vue
11. Planet Ice
12. iFly
13. The Anvil theatre
14. Basingstoke Aquadrome
15. Crabtree Plantation
16. Basingstoke Common
17. Lime Pits
18. Blackdam Ponds



By road and rail

There are excellent connections by road and rail from Park Heights across the home counties and towards London. Located on Wella Road, with access to the Ringway South and in close proximity to M3 J6, you can quickly travel out of Basingstoke south towards Winchester, Southampton,

Portsmouth or north to Farnborough, Woking and London. By rail Basingstoke is on several train routes to destinations including Southampton Central, London Waterloo, Clapham Junction, Bournemouth, Winchester and Reading.



Site plan

Wella House, Basingstoke

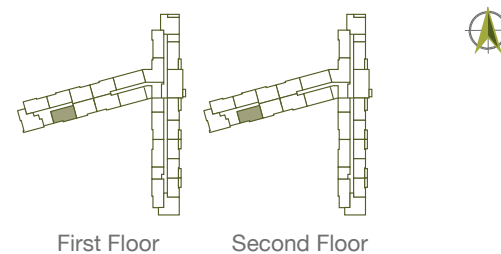


CGI is indicative only



Block B

1 bedroom apartment



Flat 1A.1

Plot number: 26, 50

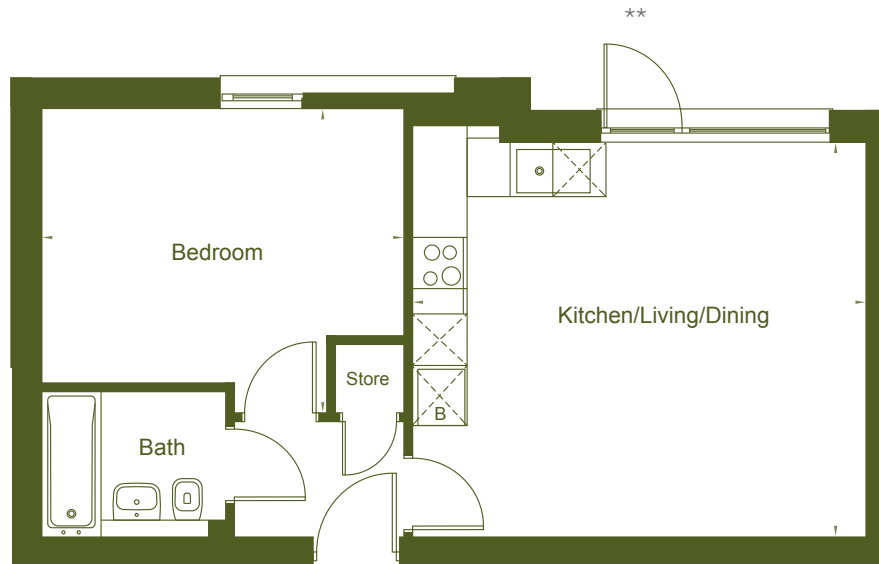
Floor level: L1 L2

Kitchen/Living/Dining	4.92m	x	4.89m
Bedroom	4.34m	x	3.32m

One bedroom apartment comprising of an entrance hall, open plan kitchen, dining and living space, storage, master bedroom and bathroom.

Block B

1 bedroom apartment



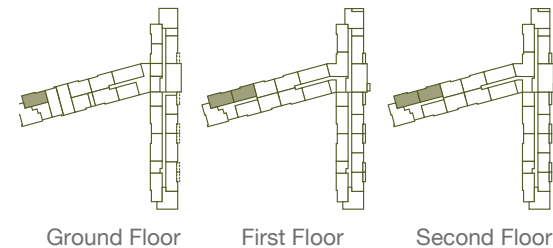
*Indicates that this plot is handed

**Door only applicable to plot 1

Flat 1A

Plot number: 1, 23, 25*, 47, 49*

Floor level: Gf L1 L1 L2 L2



Kitchen/Living/Dining
Bedroom

5.30m

x

4.60m

4.23m

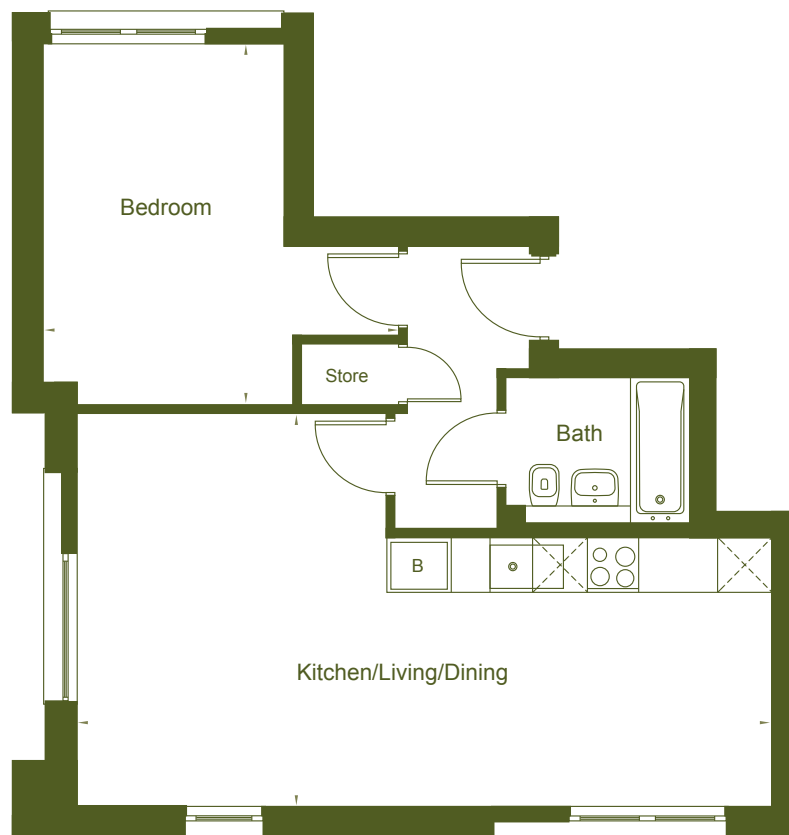
x

3.55m

One bedroom apartment comprising of an entrance hall, open plan kitchen, dining and living space, storage, master bedroom and bathroom.

Block B

1 bedroom apartment



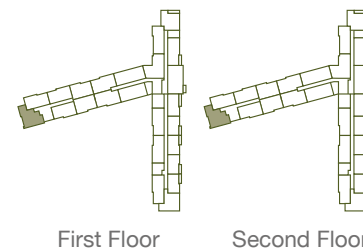
**

*Indicates that this plot is handed
 **Window only applicable to plot 24

Flat 1B

Plot number: 24, 48

Floor level: L1 L2



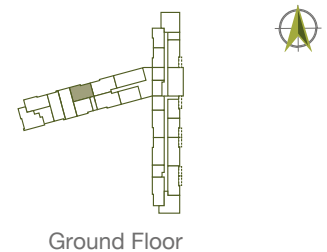
Kitchen/Living/Dining	8.10m	x	4.59m
Bedroom	4.21m	x	4.15m

One bedroom apartment comprising of an entrance hall, open plan kitchen, dining and living space, storage, master bedroom and bathroom.

Please note that the minimum dimensions are shown. Please speak to a Sales Consultant for more information. Windows and doors may be mirrored to drawn plan.

Block B

1 bedroom apartment



Flat 1C

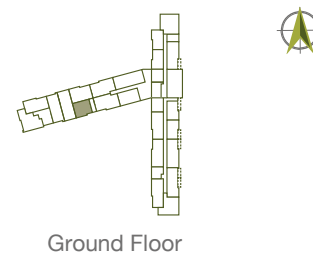
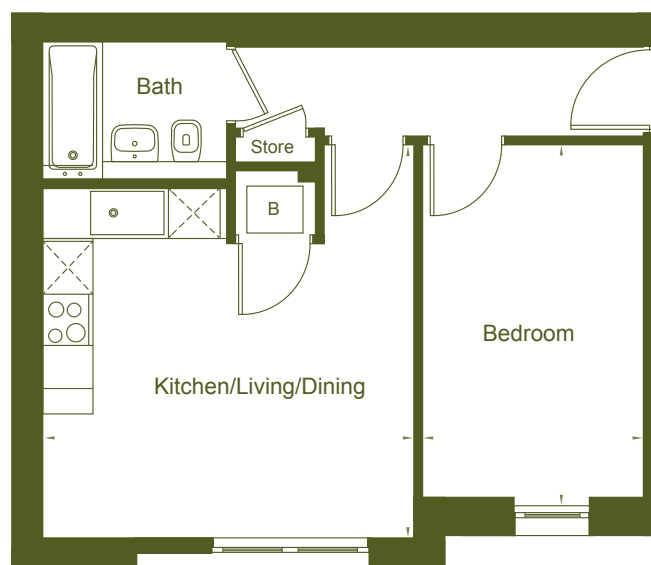
Plot number: 3
Floor level: Gf

Kitchen/Living/Dining	5.75m	x	4.34m
Bedroom	4.08m	x	2.44m

One bedroom apartment comprising of an entrance hall, open plan kitchen, dining and living space, storage, master bedroom and bathroom.

Block B

1 bedroom apartment



Flat 1D

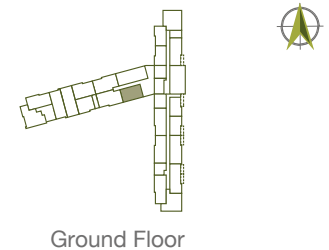
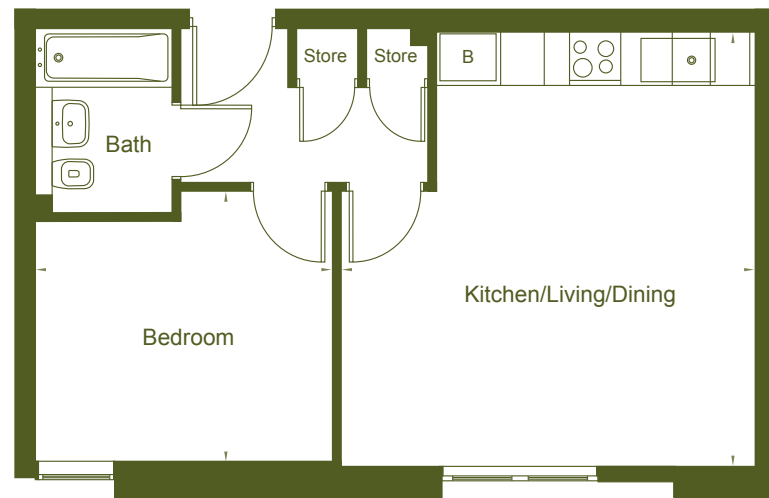
Plot number: 4
Floor level: Gf

Kitchen/Living/Dining	4.59m	x	4.34m
Bedroom	4.13m	x	2.57m

One bedroom apartment comprising of an entrance hall, open plan kitchen, dining and living space, storage, master bedroom and bathroom.

Block A

1 bedroom apartment



Flat 1E

Plot number: 8

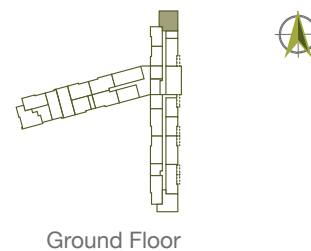
Floor level: Gf

Kitchen/Living/Dining	5.11m	x	4.83m
Bedroom	3.47m	x	3.16m

One bedroom apartment comprising of an entrance hall, open plan kitchen, dining and living space, storage, master bedroom and bathroom.

Block A

1 bedroom apartment



Flat 1F

Plot number: 9

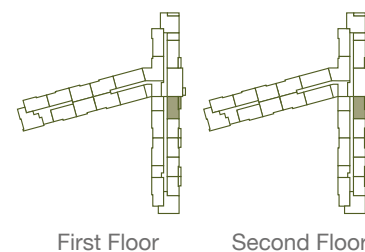
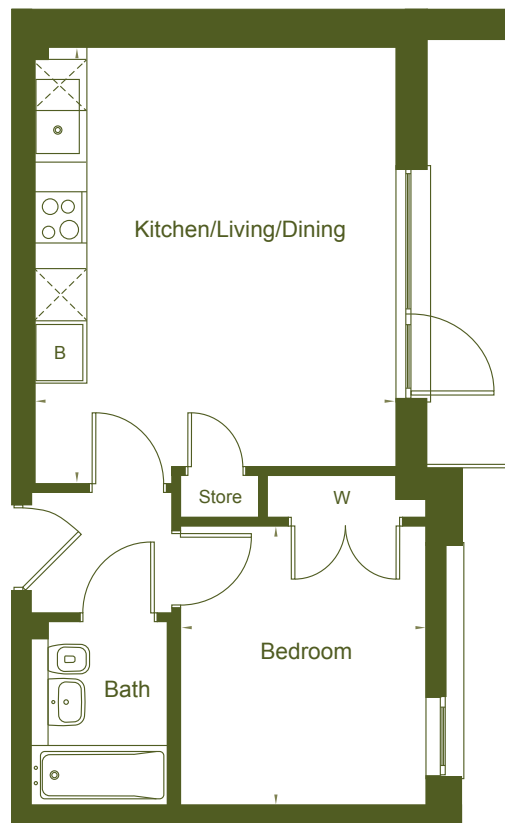
Floor level: Gf

Kitchen/Living/Dining	7.85m	x	4.53m
Bedroom	4.84m	x	2.75m

One bedroom apartment comprising of an entrance hall, open plan kitchen, dining and living space, storage, master bedroom and bathroom.

Block A

1 bedroom apartment



Flat 1G.1

Plot number: 38, 62

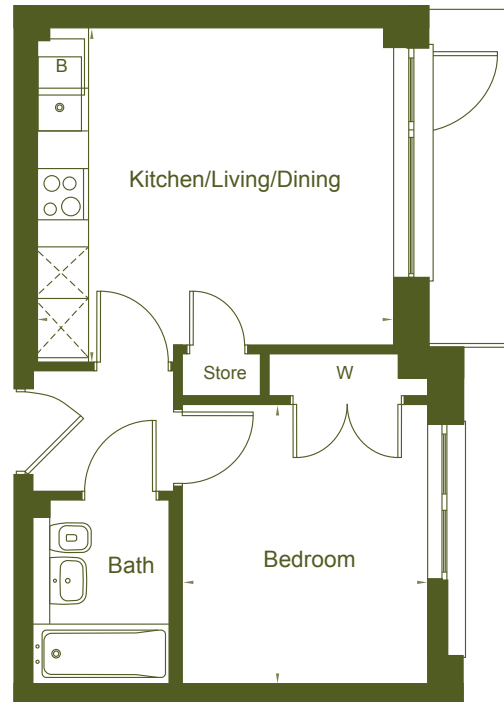
Floor level: L1 L2

Kitchen/Living/Dining	5.15m	x	4.27m
Bedroom	3.26m	x	2.86m

One bedroom apartment comprising of an entrance hall, open plan kitchen, dining and living space, storage, master bedroom and bathroom.

Block A

1 bedroom apartment

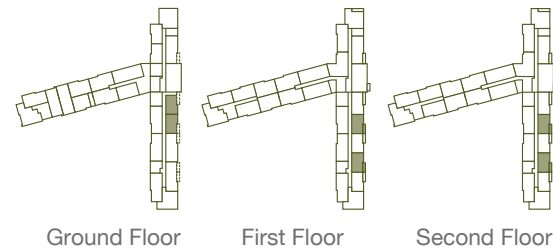


*Indicates that this plot is handed

Flat 1G.1

Plot number: 15, 17*, 40*, 43*, 64*, 67*

Floor level: Gf Gf L1 L1 L2 L2



Kitchen/Living/Dining
Bedroom

4.20m

x

4.00m

3.26m

x

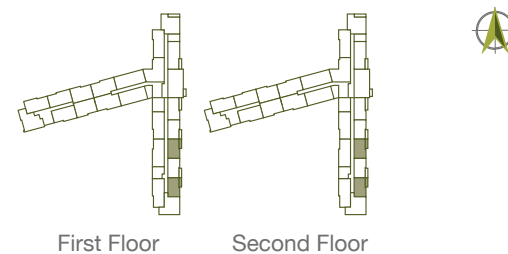
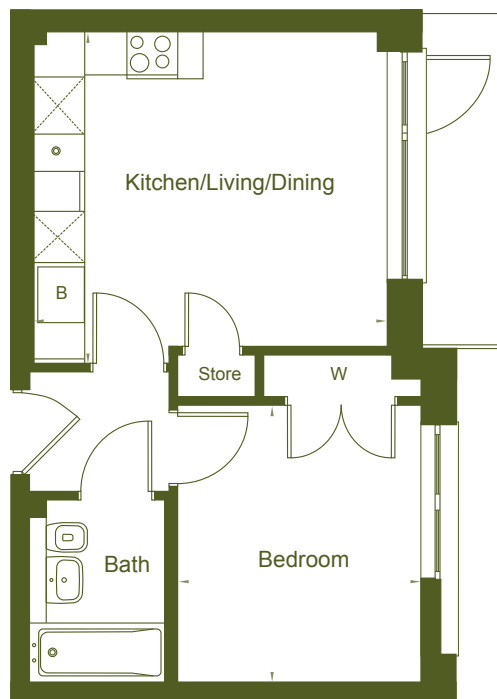
2.86m

One bedroom apartment comprising of an entrance hall, open plan kitchen, dining and living space, storage, master bedroom and bathroom.

Please note that the minimum dimensions are shown. Please speak to a Sales Consultant for more information. Windows and doors may be mirrored to drawn plan.

Block A

1 bedroom apartment



Flat 1G.1

Plot number: 41, 45, 66, 69

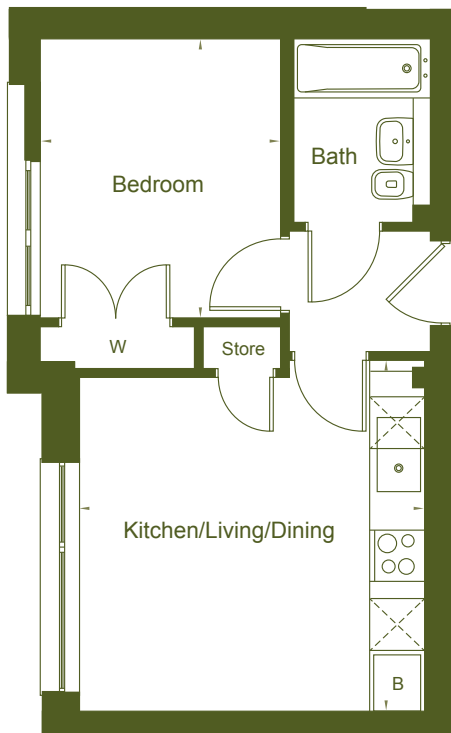
Floor level: L1 L1 L2 L2

Kitchen/Living/Dining	4.20m	x	4.00m
Bedroom	3.26m	x	2.92m

One bedroom apartment comprising of an entrance hall, open plan kitchen, dining and living space, storage, master bedroom and bathroom.

Block A

1 bedroom apartment

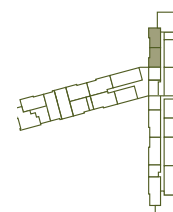


*Indicates that this plot is handed

Flat 1G

Plot number: 10, 12*

Floor level: Gf Gf



Ground Floor

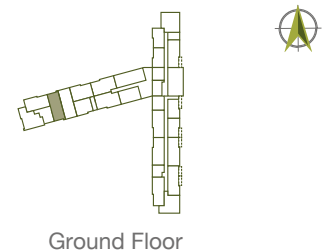
Kitchen/Living/Dining	4.09m	x	4.03m
Bedroom	3.26m	x	2.80m

One bedroom apartment comprising of an entrance hall, open plan kitchen, dining and living space, storage, master bedroom and bathroom.

Please note that the minimum dimensions are shown. Please speak to a Sales Consultant for more information. Windows and doors may be mirrored to drawn plan.

Block B

1 bedroom apartment



Flat 1H

Plot number: 11

Floor level: Gf

Kitchen/Living/Dining	4.61m	x	4.39m
Bedroom	4.64m	x	3.39m

One bedroom apartment comprising of an entrance hall, open plan kitchen, dining and living space, storage, master bedroom and bathroom.

Block B

1 bedroom apartment

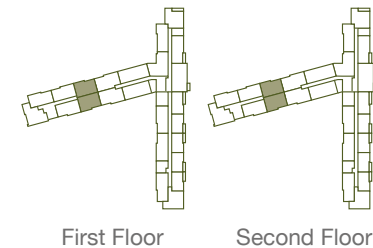


*Indicates that this plot is handed

Flat 11

Plot number: 27, 28*, 51, 52*

Floor level: L1 L1 L2 L2



Kitchen/Living/Dining
Bedroom

5.23m

x

4.08m

4.34m

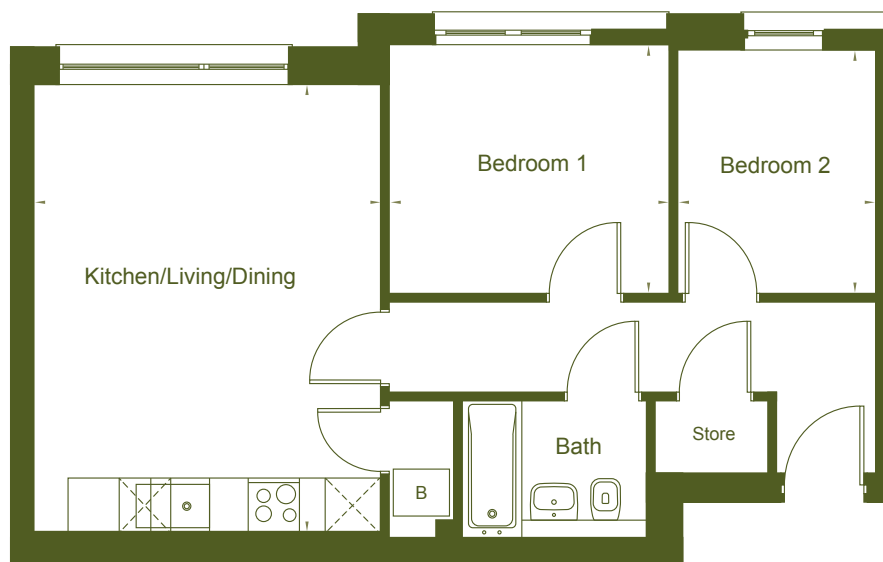
x

2.81m

One bedroom apartment comprising of an entrance hall, open plan kitchen, dining and living space, storage, master bedroom and bathroom.

Block A

2 bedroom apartment

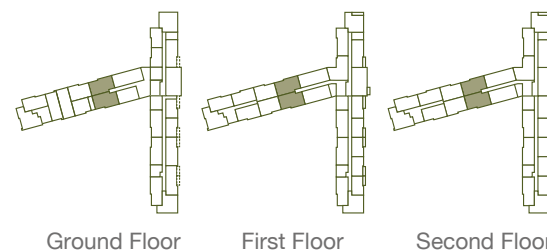


*Indicates that this plot is handed

Flat 2A

Plot number: 5, 6*, 29, 30*, 53, 54*

Floor level: Gf Gf L1 L1 L2 L2



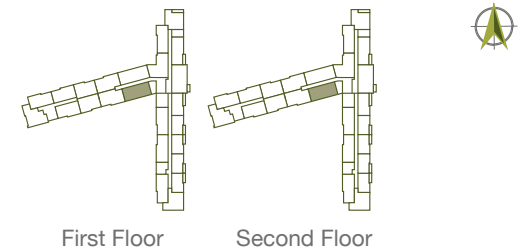
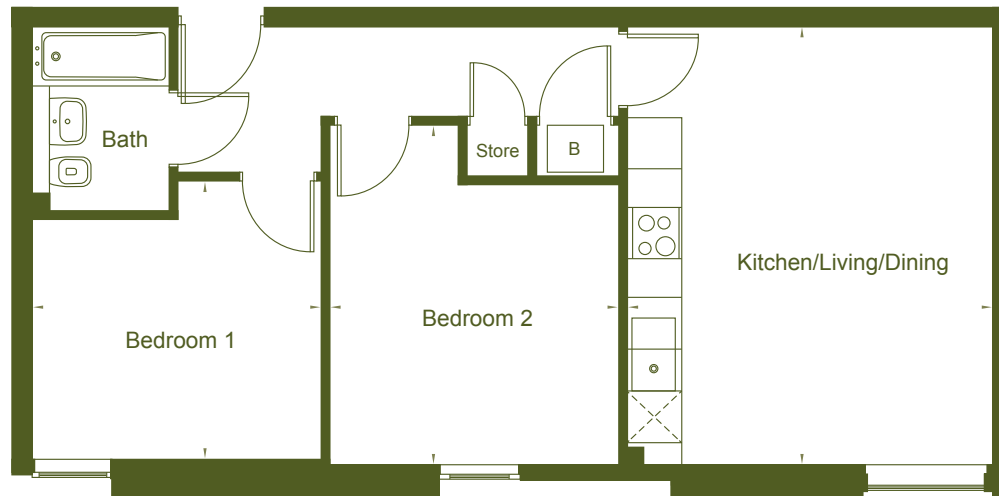
Kitchen/Living/Dining	5.23m	x	4.08m
Bedroom 1	3.27m	x	2.90m
Bedroom 2	2.85m	x	2.31m

Two bedroom apartment comprising of an entrance hall, open plan kitchen, dining and living space, storage, master bedroom, second bedroom and bathroom.

Please note that the minimum dimensions are shown. Please speak to a Sales Consultant for more information. Windows and doors may be mirrored to drawn plan.

Block A

2 bedroom apartment



Flat 2B.1

Plot number: 32, 56

Floor level: L1 L2

Kitchen/Living/Dining	5.11m	x	4.30m
Bedroom 1	3.37m	x	3.31m
Bedroom 2	3.96m	x	3.36m

Two bedroom apartment comprising of an entrance hall, open plan kitchen, dining and living space, master bedroom, second bedroom and bathroom.

Block A

2 bedroom apartment

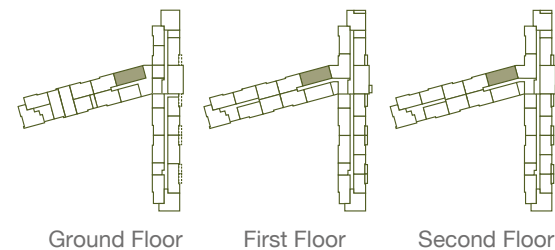


*Indicates that this plot is handed

Flat 2B

Plot number: 7, 31, 55

Floor level: Gf Gf L1 L1 L2 L2



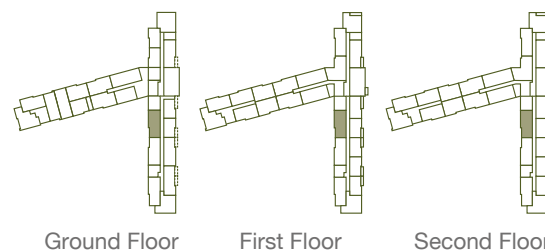
Kitchen/Living/Dining	5.34m	x	5.00m
Bedroom 1	3.37m	x	3.14m
Bedroom 2	3.85m	x	3.36m

Two bedroom apartment comprising of an entrance hall, open plan kitchen, dining and living space, storage, master bedroom, second bedroom and bathroom.

Please note that the minimum dimensions are shown. Please speak to a Sales Consultant for more information. Windows and doors may be mirrored to drawn plan.

Block A

2 bedroom apartment



Flat 2C.1

Plot number: 16, 39, 63

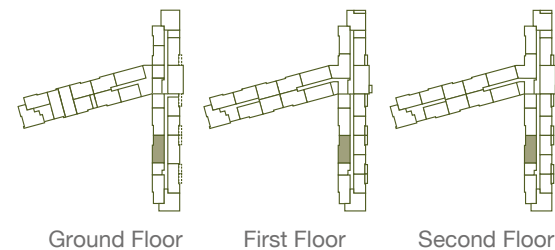
Floor level: Gf L1 L2

Kitchen/Living/Dining	4.09m	x	4.08m
Bedroom 1	3.51m	x	3.19m
Bedroom 2	3.26m	x	3.19m

Two bedroom apartment comprising of an entrance hall, open plan kitchen, dining and living space, storage, master bedroom, second bedroom and bathroom.

Block A

2 bedroom apartment



Flat 2C.2

Plot number: 18, 42, 65

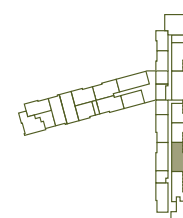
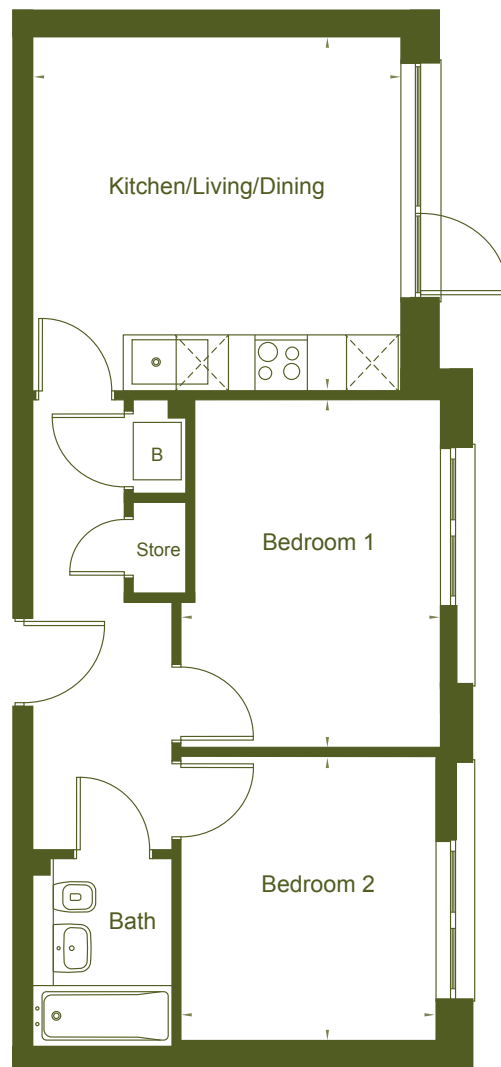
Floor level: Gf L1 L2

Kitchen/Living/Dining	4.09m	x	4.07m
Bedroom 1	3.63m	x	3.19m
Bedroom 2	3.26m	x	3.19m

Two bedroom apartment comprising of an entrance hall, open plan kitchen, dining and living space, storage, master bedroom, second bedroom and bathroom.

Block A

2 bedroom apartment



Ground Floor

Flat 2C.3

Plot number: 19

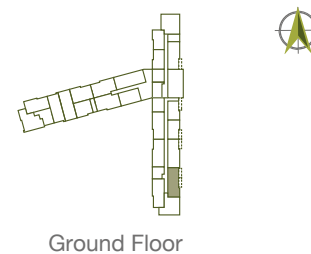
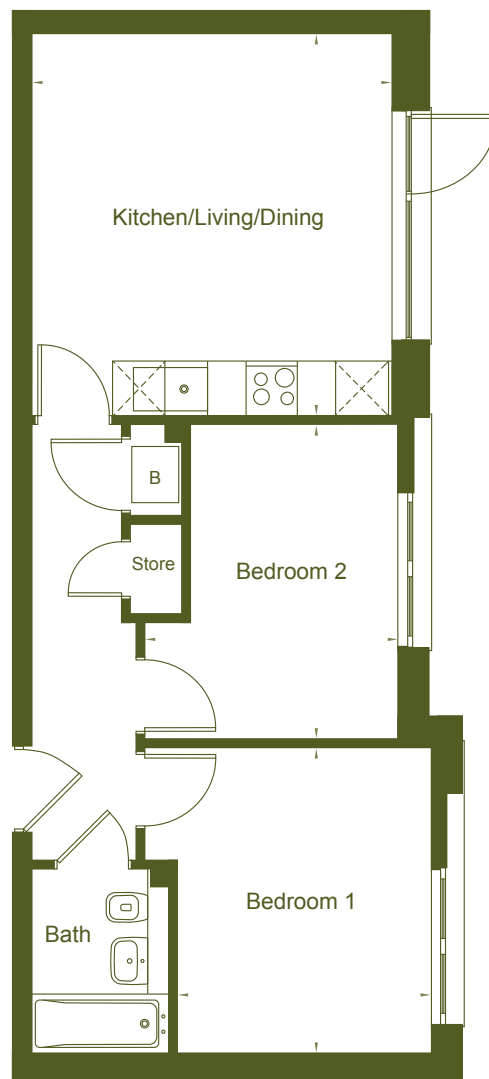
Floor level: Gr

Kitchen/Living/Dining	4.07m	x	4.20m
Bedroom 1	3.97m	x	2.97m
Bedroom 2	3.25m	x	2.91m

Two bedroom apartment comprising of an entrance hall, living room, kitchen/dining, storage, master bedroom, second bedroom and bathroom.

Block A

2 bedroom apartment



Flat 2C.4

Plot number: 20

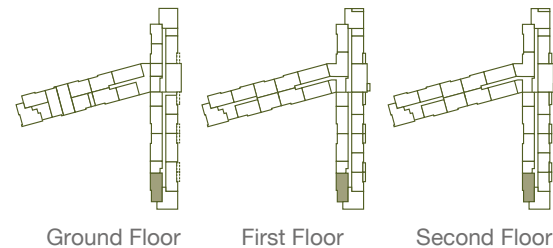
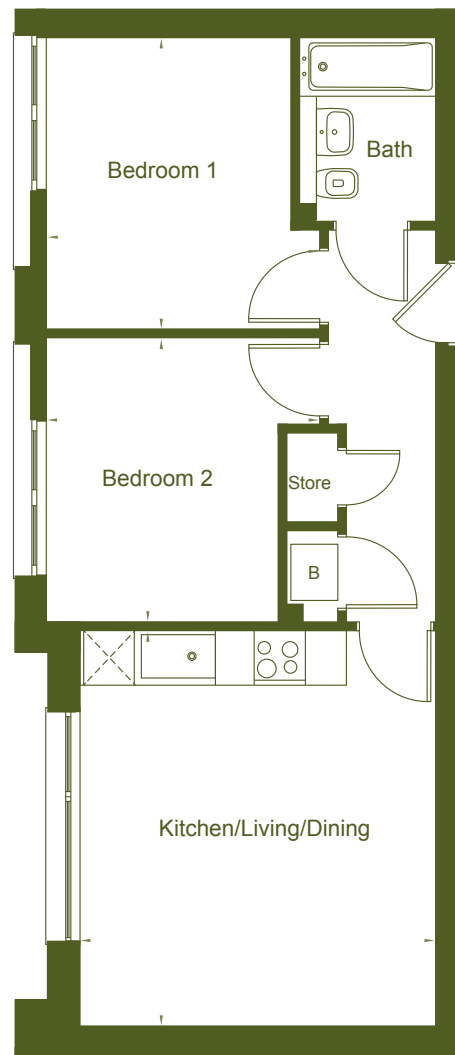
Floor level: Gf

Kitchen/Living/Dining	4.50m	x	4.21m
Bedroom 1	3.57m	x	2.97m
Bedroom 2	3.66m	x	2.95m

Two bedroom apartment comprising of an entrance hall, open plan kitchen, dining and living space, storage, master bedroom, second bedroom and bathroom.

Block A

2 bedroom apartment



Flat 2C.5

Plot number: 21, 44, 68

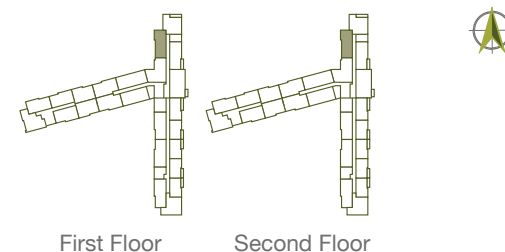
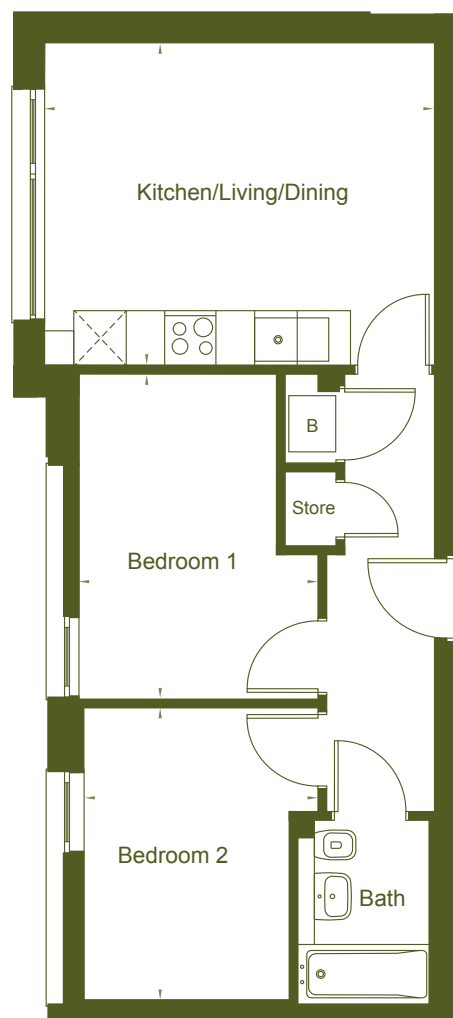
Floor level: Gf L1 L2

Kitchen/Living/Dining	4.61m	x	4.15m
Bedroom 1	3.40m	x	3.20m
Bedroom 2	3.31m	x	3.20m

Two bedroom apartment comprising of an entrance hall, open plan kitchen, dining and living space, storage, master bedroom, second bedroom and bathroom.

Block A

2 bedroom apartment



Flat 2C.6

Plot number: 34, 58

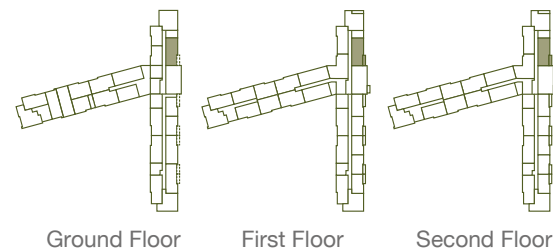
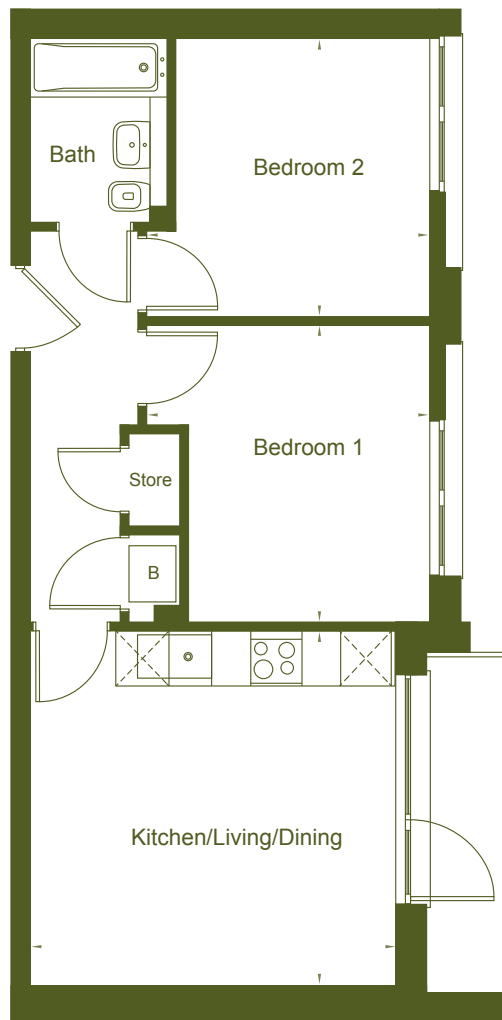
Floor level: L1 L2

Kitchen/Living/Dining	4.55m	x	3.76m
Bedroom 1	3.79m	x	2.79m
Bedroom 2	3.46m	x	2.73m

Two bedroom apartment comprising of an entrance hall, open plan kitchen, dining and living space, storage, master bedroom, second bedroom and bathroom.

Block A

2 bedroom apartment



Flat 2C

Plot number: 13, 35, 59

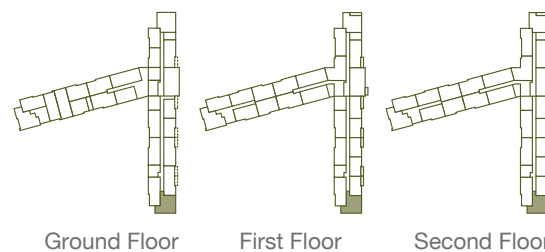
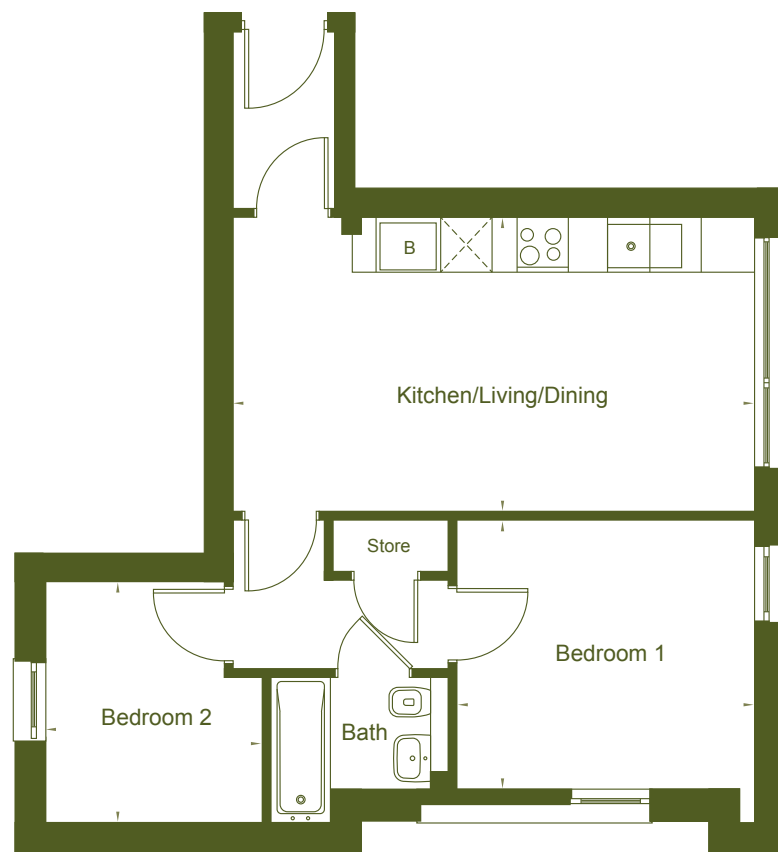
Floor level: Gf L1 L2

Kitchen/Living/Dining	4.26m	x	4.14m
Bedroom 1	3.46m	x	3.30m
Bedroom 2	3.30m	x	3.25m

Two bedroom apartment comprising of an entrance hall, open plan kitchen, dining and living space, storage, master bedroom, second bedroom and bathroom.

Block A

2 bedroom apartment



Flat 2D

Plot number: 22, 46, 70

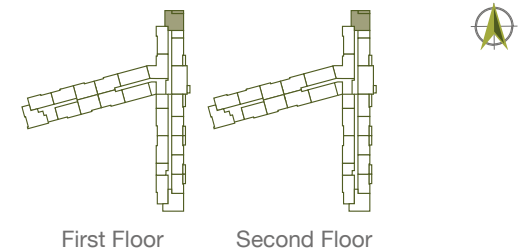
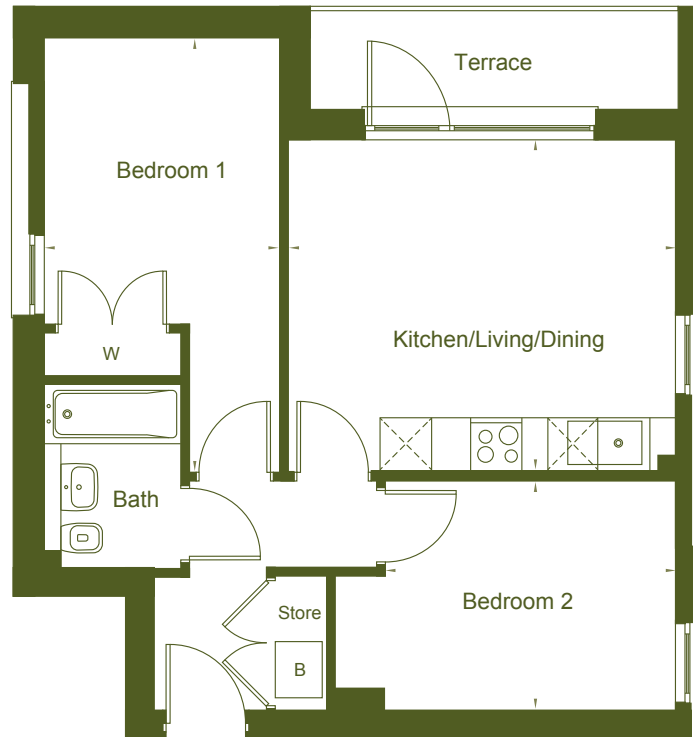
Floor level: Gf L1 L2

Kitchen/Living/Dining	6.09m	x	3.44m
Bedroom 1	3.48m	x	3.13m
Bedroom 2	2.81m	x	2.53m

Two bedroom apartment comprising of an entrance hall, open plan kitchen, dining and living space, storage, master bedroom, second bedroom and bathroom.

Block A

2 bedroom apartment



Flat 2E

Plot number: 33, 57

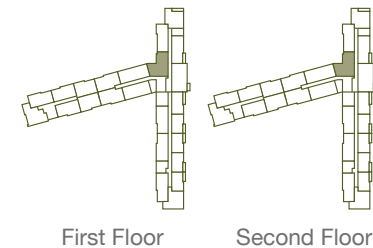
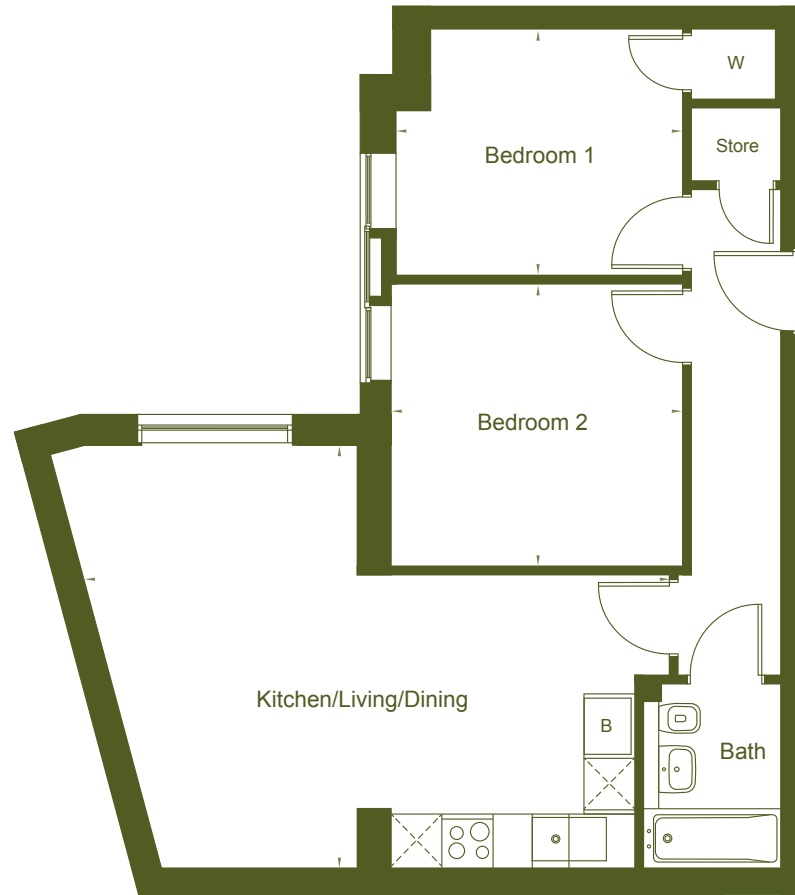
Floor level: L1 L2

Kitchen/Living/Dining	4.53m	x	3.87m
Bedroom 1	5.08m	x	2.74m
Bedroom 2	3.40m	x	2.69m

Two bedroom apartment comprising of an entrance hall, open plan kitchen, dining and living space, storage, master bedroom, second bedroom and bathroom.

Block A

2 bedroom apartment



Flat 2F

Plot number: 36, 60

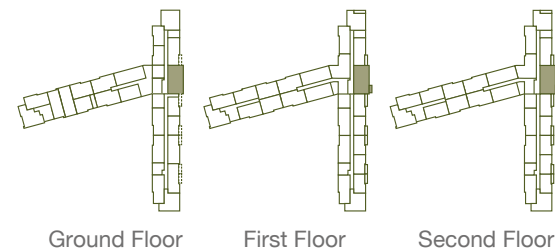
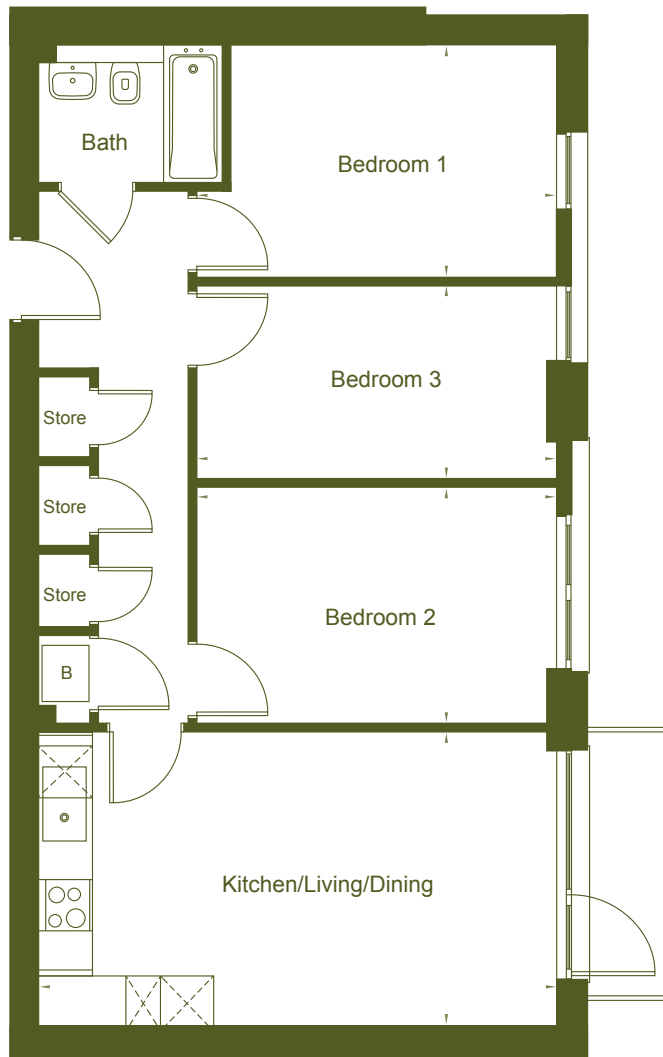
Floor level: L1 L2

Kitchen/Living/Dining	6.73m	x	4.94m
Bedroom 1	3.34m	x	2.91m
Bedroom 2	3.40m	x	3.29m

Two bedroom apartment comprising of an entrance hall, open plan kitchen, dining and living space, storage, master bedroom, second bedroom and bathroom.

Block A

3 bedroom apartment



Flat 3A

Plot number: 14, 37, 61

Floor level: Gf L1 L2

Kitchen/Living/Dining	6.05m	x	3.43m
Bedroom 1	4.20m	x	2.71m
Bedroom 2	4.20m	x	2.75m
Bedroom 3	4.20m	x	2.25m

Three bedroom apartment comprising of an entrance hall, open plan kitchen, dining and living space, storage, master bedroom, second bedroom, third bedroom and bathroom.

Please note that the minimum dimensions are shown. Please speak to a Sales Consultant for more information. Windows and doors may be mirrored to drawn plan.

Specification

Kitchen

- Homes have had kitchen unit styles pre-selected and will be either:
 - Light Atelier style units paired with Maryland Fonce style worktop
 - Boston Concrete style units paired with a Underground Stucco style worktop
 - Tabaco Oak style units paired with a Nero Granite style worktop
- Integrated stainless steel oven, ceramic hob and telescopic extractor with glass splashback
- Stainless steel inset sink and mixer tap
- Integrated washer dryer
- Integrated built under fridge with ice box

General

- Karndean vinyl flooring throughout except bedrooms where carpet is fitted
- Electric combi boiler using a wet heating system

Bathroom

- Ceramic wall tiles
- Shaver point



CGI is indicative only


Shared Ownership

Park Heights

- You'll need a smaller deposit and mortgage than if you bought a property outright
- Generally you are able to buy a bigger property than you may otherwise be able to afford
- You are able to buy more shares until you own the property outright
- Your monthly payments could be less than renting privately





 0300 456 0522

 www.guinnesshomes.co.uk

 sales@guinness.org.uk

Guinness Homes is part of The Guinness Partnership Ltd. Registered office is at 30 Brock Street, Regent's Place, London, NW1 3FG.

These particulars do not constitute any part of an offer or contract. Any intending purchaser must satisfy themselves by inspection as to the correctness of each of the statements contained in these particulars. Computer generated images are for illustration purposes only. Features such as windows, brick and other materials may vary. Dimensions and floor plans are designed to give you a general indication of the layout and should never be used for curtains, carpets, furniture or appliance spaces. Landscaping is shown for illustrative purposes only. Map not to scale. Plans are indicative only. Your home is at risk if you do not keep up the rent and mortgage repayments. Guinness Homes and The Guinness Partnership support the development of mixed tenure communities and are proud to provide homes for shared ownership and affordable rent. The tenure of these homes may change subject to demand. Details correct at time of going to print. March 2020.