



# Hayne Farm



A stylish collection of 1 & 2 bed apartments

# Beautifully designed for you

A stylish collection of homes located at the newly built development of Hayne Farm near the town of Gittisham.

Ideally situated on the edge of the East Devon Area of Outstanding Natural Beauty, and with fantastic transport links to neighbouring Exeter, Hayne Farm in Gittisham is a wonderful place to call home.



-  **The Combe**
-  **The Sidmouth**

**Hayne Farm**  
Meadow Acre Road,  
Gittisham,  
Honiton  
EX14 3FE







# The Combe

1 Bedroom apartment  
Plots 214, 215,\* 216, 217,\* 218 & 219\*

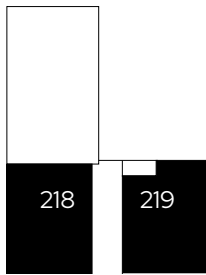
1 1 1

## Room

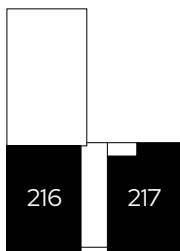
Kitchen/Dining room	5.6m x 4.0m
Bedroom	4.3m x 2.8m
Bathroom	2.5m x 2.2m



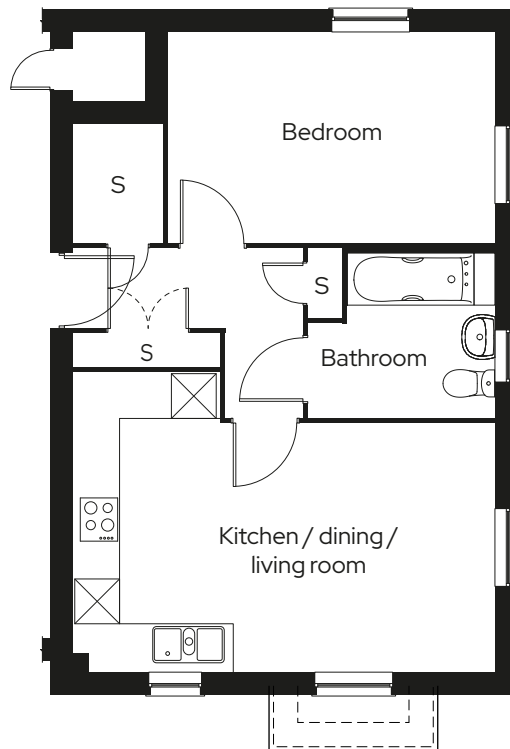
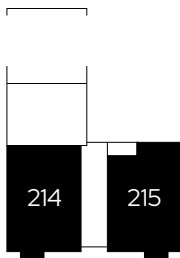
Second Floor



First Floor



Ground Floor



\*Mirrored plot S Storage †Bedroom 4.4m x 2.8m

We operate a policy of continuous product development and individual features such as windows and elevational treatments may vary. Consequently, particulars contained within this document should be treated as general guidance only. They do not constitute a contract, part of a contract or a warranty. Computer generated images and photographs are for illustration purposes only and may not accurately depict individual plots. Dimensions provided are for general guidance and are not intended to be used for carpet sizes, appliances, spaces or items of furniture. All dimensions are maximum.



# The Sidmouth

2 Bedroom apartment  
Plot 220

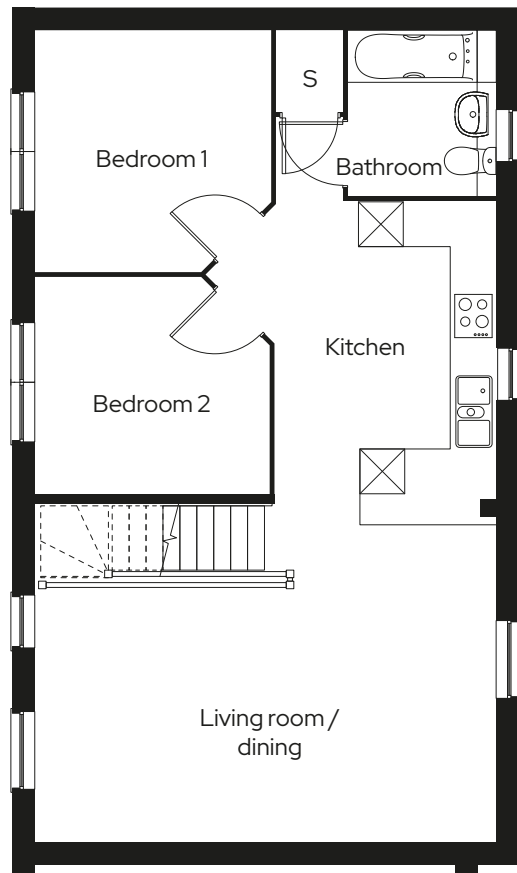
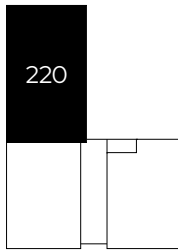
2  1  1 

## Room

Kitchen/Dining/Living	8.4m x 6.0m
Master bedroom	3.4m x 3.0m
Bedroom 2	2.6m x 3.0m
Bathroom	1.9m x 2.3m



First Floor



S Storage

We operate a policy of continuous product development and individual features such as windows and elevational treatments may vary. Consequently, particulars contained within this document should be treated as general guidance only. They do not constitute a contract, part of a contract or a warranty. Computer generated images and photographs are for illustration purposes only and may not accurately depict individual plots. Dimensions provided are for general guidance and are not intended to be used for carpet sizes, appliances, spaces or items of furniture. All dimensions are maximum.

As one of the UK's leading shared ownership providers, Sovereign is passionate about giving everyone the opportunity to own their own home.

Our highly dedicated sales team has already helped thousands of people step onto the property ladder and our profit with a purpose principle means we can continue to help thousands more. Established, experienced, and affordable, we are proud to help more people live where they love.

## Get in touch

### 0300 330 0718

To find out more about shared ownership and the homes we offer, get in touch today.

→ [sovereignliving.org.uk](https://sovereignliving.org.uk)

### Head office

Sovereign House  
Basing View  
Basingstoke  
RG21 4FA

# Hayne Farm

## Price list & availability

### Contact

0300 330 0718

[newbuildso@sovereign.org.uk](mailto:newbuildso@sovereign.org.uk)

Plot No.	Property details	Price	Minimum % share	Share price	Monthly rent	Est. monthly service charge
----------	------------------	-------	-----------------	-------------	--------------	-----------------------------

### 1 bed apartments

214	Ground floor apartment with one parking space	£140,000	40%	£56,000	£192.50	£TBC
215	Ground floor apartment with one parking space	£142,500	40%	£57,000	£195.94	£TBC
216	First floor apartment with one parking space	£140,000	40%	£56,000	£192.50	£TBC
217	First floor apartment with one parking space	£142,500	40%	£57,000	£195.94	£TBC
218	Second floor apartment with one parking space	£140,000	40%	£56,000	£192.50	£TBC
219	Second floor apartment with one parking space	£142,500	40%	£57,000	£195.94	£TBC

### 2 bed apartment

220	Two bed coach house with garage	£180,000	40%	£72,000	£247.50	£TBC
-----	---------------------------------	----------	-----	---------	---------	------

Prices, monthly rental charge and services charge are correct at time of print and subject to annual review. Management fee under review. Eligibility conditions apply and can be found at [www.sovereign.org.uk](http://www.sovereign.org.uk). September 2020

Sovereign Housing Association Limited is charitable