



Making home ownership possible

Times Square

Woolworth House Floor Plans

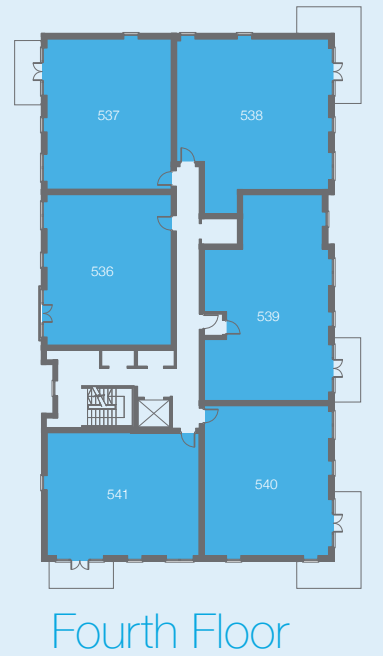
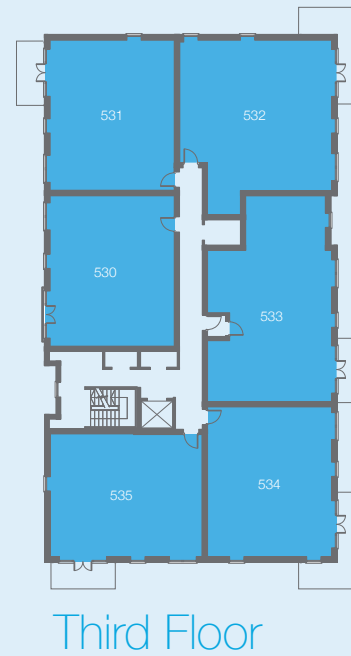
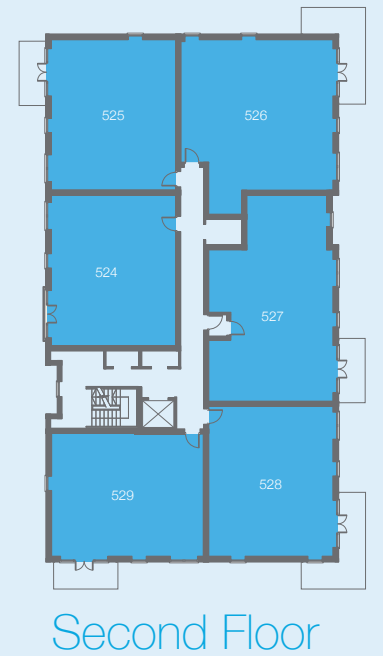
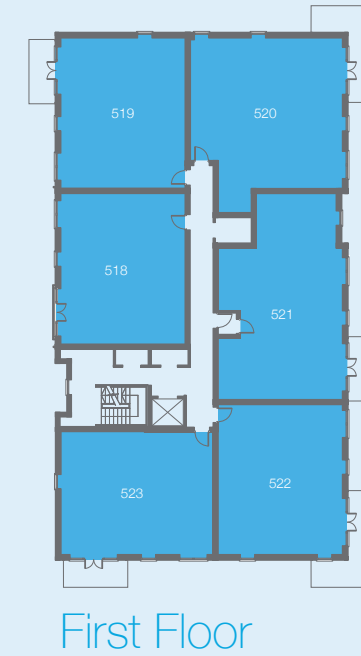
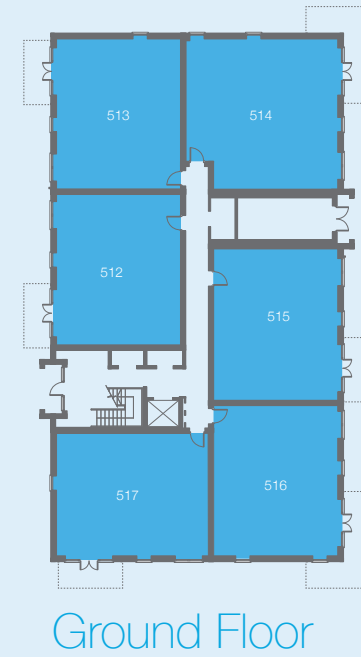
by Metropolitan Thames Valley

Woolworth House

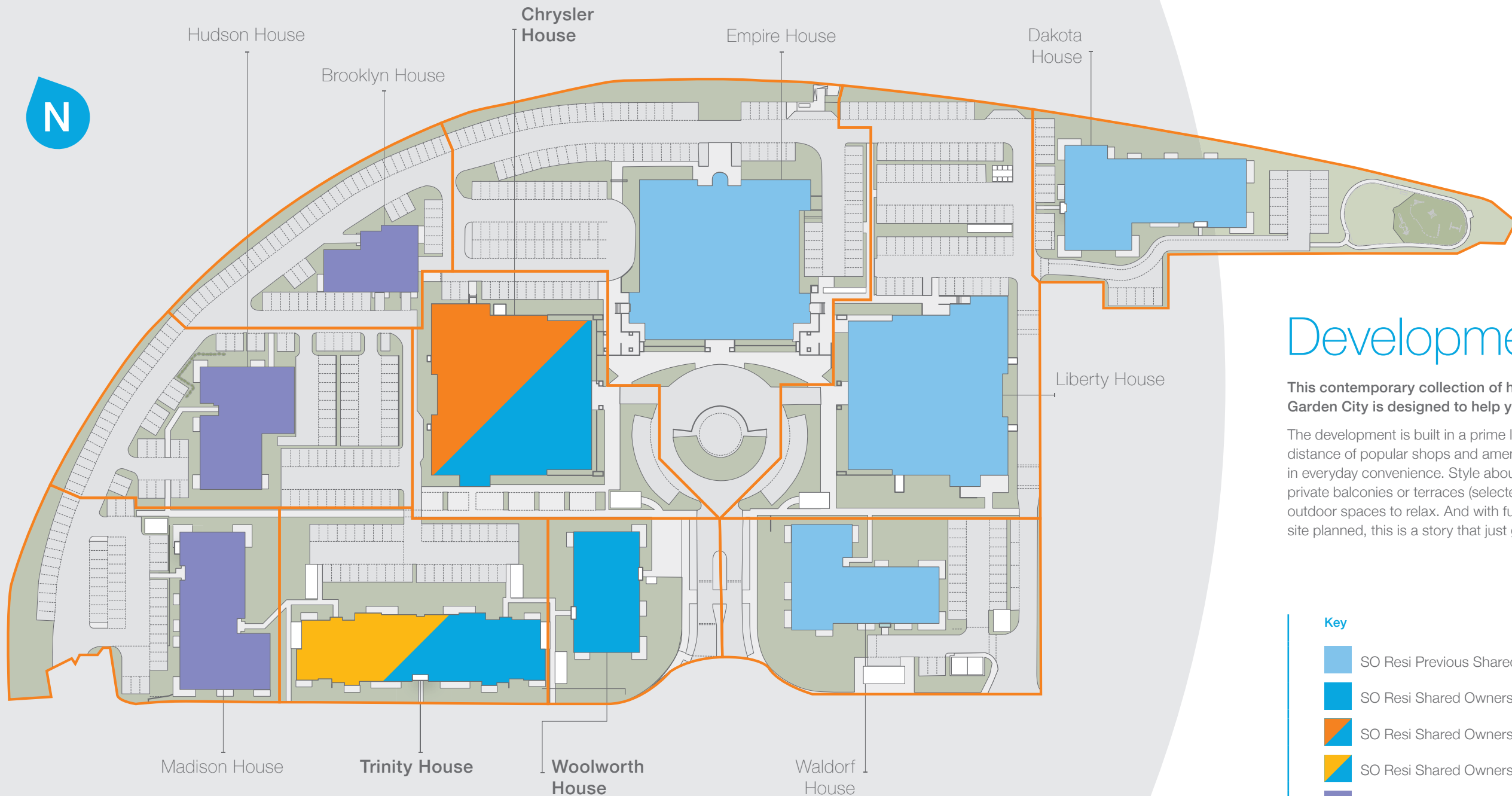


at Times Square
WELWYN GARDEN CITY

Woolworth House Floor by floor...



- KEY
- Two Bedroom Apartment
 - Residents' Lift



Development overview

This contemporary collection of homes in central Welwyn Garden City is designed to help you make the most of living.

The development is built in a prime location within walking distance of popular shops and amenities for the ultimate in everyday convenience. Style abounds throughout and private balconies or terraces (selected homes only) provide outdoor spaces to relax. And with further expansion to the site planned, this is a story that just gets better and better.



Sat Nav Location
AL7 1FY

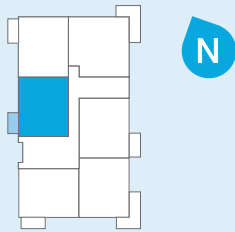
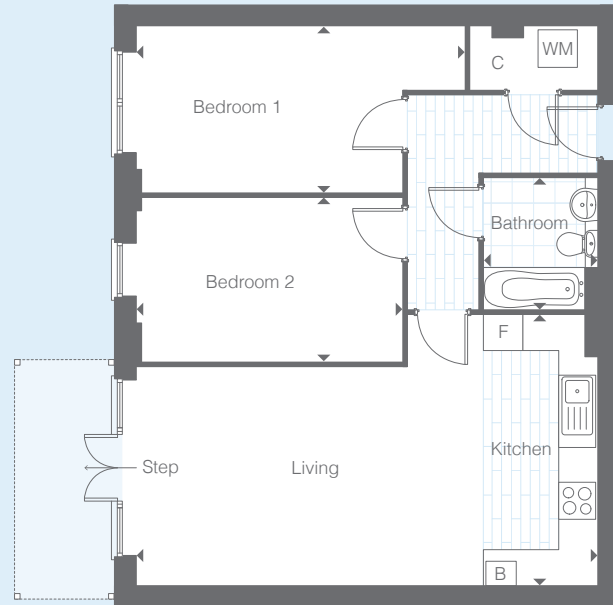
Key

- SO Resi Previous Shared Ownership Phases
- SO Resi Shared Ownership
- SO Resi Shared Ownership & Private Sale
- SO Resi Shared Ownership & Affordable Rent
- Future Phases

The site layout map is intended for illustrative purposes only and is subject to change

Type 1

2 bedroom apartment



Floor	Plot
Ground	512

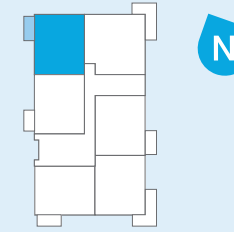
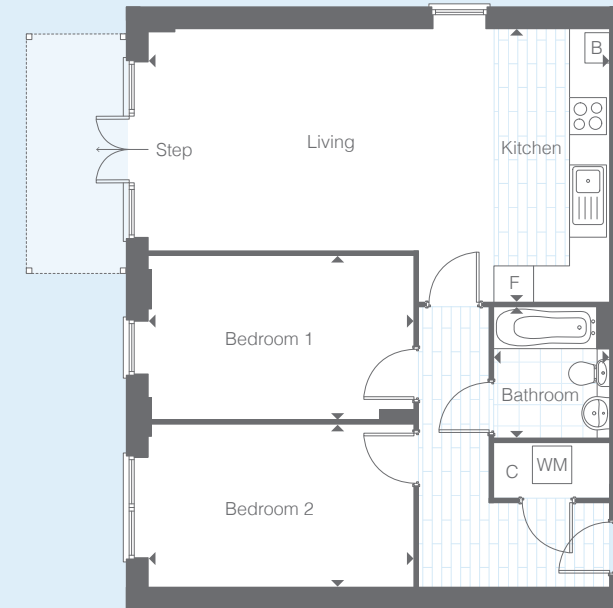
Room	Metric	Imperial
Living / Kitchen Area	7.61m x 4.46m	25'0" x 14'8"
Bedroom 1	5.41m x 2.75m	17'9" x 9'0"
Bedroom 2	4.39m x 2.72m	14'5" x 8'11"
Bathroom	2.17m x 1.90m	7'1" x 6'3"

- B Boiler
- F Fridge
- WM Washing Machine
- C Cupboard

All floor plans in this brochure are for general guidance only. All room dimensions are subject to a plus/minus 5% tolerance. Measures are from plans and "as built", represent the largest cross section of each room and may vary and. Size of balconies vary between apartments of the same type. Any dimensions shown are not intended to be used for carpet sizes, appliances, spaces or items of furniture. These particulars do not constitute any part of an offer or contract with regard to the specifications.

Type 2

2 bedroom apartment



Floor	Plot
Ground	513

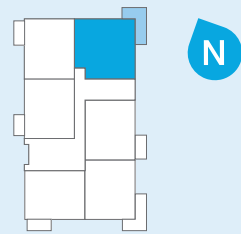
Room	Metric	Imperial
Living / Kitchen Area	7.61m x 4.51m	25'0" x 14'10"
Bedroom 1	4.39m x 2.71m	14'5" x 8'11"
Bedroom 2	4.39m x 2.68m	14'5" x 8'10"
Bathroom	1.90m x 2.17m	6'3" x 7'1"

- B Boiler
- F Fridge
- WM Washing Machine
- C Cupboard

All floor plans in this brochure are for general guidance only. All room dimensions are subject to a plus/minus 5% tolerance. Measures are from plans and "as built", represent the largest cross section of each room and may vary and. Size of balconies vary between apartments of the same type. Any dimensions shown are not intended to be used for carpet sizes, appliances, spaces or items of furniture. These particulars do not constitute any part of an offer or contract with regard to the specifications.

Type 3

2 bedroom apartment



Floor	Plot
Ground	514

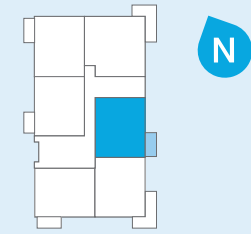
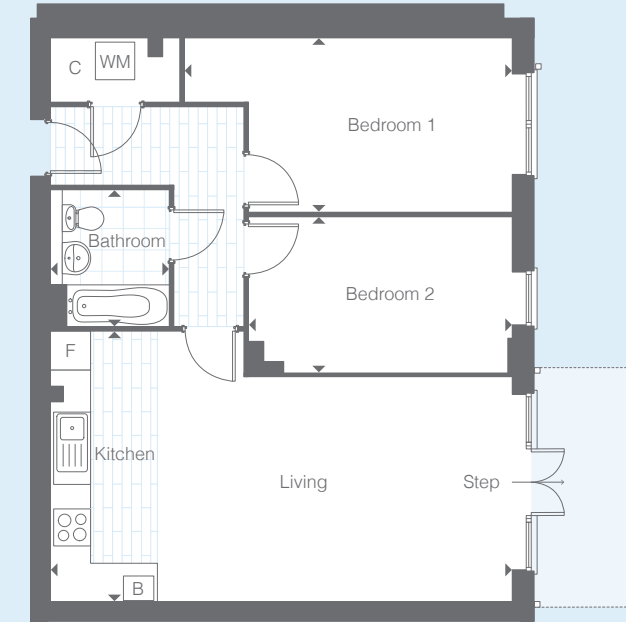
Room	Metric	Imperial
Living / Dining Area	6.93m x 3.71m	22'9" x 12'2"
Kitchen	4.25m x 2.30m	13'11" x 7'7"
Bedroom 1	5.54m x 2.77m	18'2" x 9'1"
Bedroom 2	4.47m x 2.56m	14'8" x 8'5"
Bathroom	2.12m x 1.95m	6'11" x 6'5"
En-Suite	2.20m x 1.69m	7'3" x 5'7"

- B Boiler
- F Fridge
- WM Washing Machine
- C Cupboard
- Water Cylinder

All floor plans in this brochure are for general guidance only. All room dimensions are subject to a plus/minus 5% tolerance. Measures are from plans and "as built", represent the largest cross section of each room and may vary and. Size of balconies vary between apartments of the same type. Any dimensions shown are not intended to be used for carpet sizes, appliances, spaces or items of furniture. These particulars do not constitute any part of an offer or contract with regard to the specifications.

Type 4

2 bedroom apartment



Floor	Plot
Ground	515

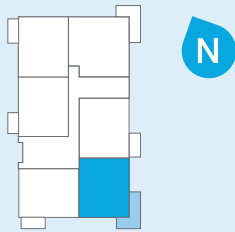
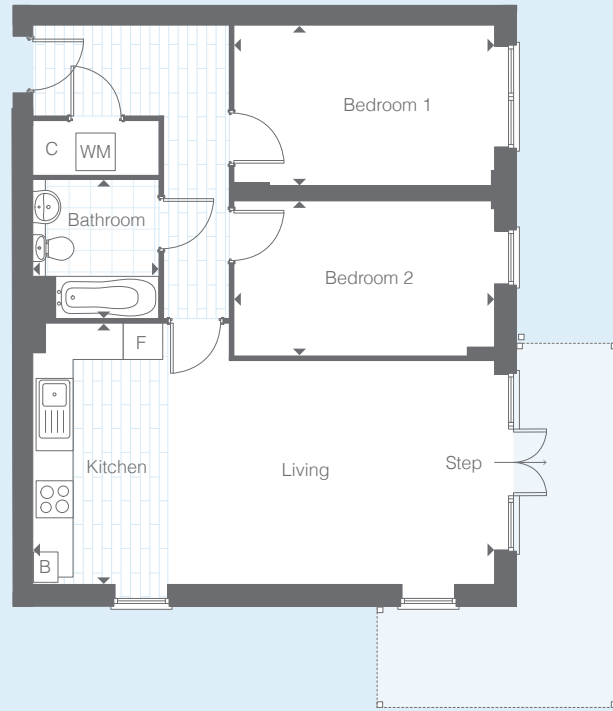
Room	Metric	Imperial
Living / Kitchen Area	7.61m x 4.40m	25'0" x 14'5"
Bedroom 1	5.40m x 2.88m	17'6" x 9'2"
Bedroom 2	4.34m x 2.57m	14'3" x 8'5"
Bathroom	1.95m x 2.25m	6'5" x 7'5"

- B Boiler
- F Fridge
- WM Washing Machine
- C Cupboard

All floor plans in this brochure are for general guidance only. All room dimensions are subject to a plus/minus 5% tolerance. Measures are from plans and "as built", represent the largest cross section of each room and may vary and. Size of balconies vary between apartments of the same type. Any dimensions shown are not intended to be used for carpet sizes, appliances, spaces or items of furniture. These particulars do not constitute any part of an offer or contract with regard to the specifications.

Type 5

2 bedroom apartment



Floor Plot
Ground 516

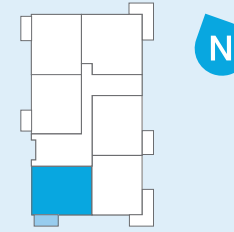
Room	Metric	Imperial
Living / Kitchen Area	7.61m x 4.31m	25'0" x 14'2"
Bedroom 1	4.31m x 2.76m	14'2" x 9'1"
Bedroom 2	4.31m x 2.64m	14'2" x 8'8"
Bathroom	2.28m x 2.05m	7'6" x 6'9"

- B Boiler
- F Fridge
- WM Washing Machine
- C Cupboard

All floor plans in this brochure are for general guidance only. All room dimensions are subject to a plus/minus 5% tolerance. Measures are from plans and "as built", represent the largest cross section of each room and may vary and. Size of balconies vary between apartments of the same type. Any dimensions shown are not intended to be used for carpet sizes, appliances, spaces or items of furniture. These particulars do not constitute any part of an offer or contract with regard to the specifications.

Type 6

2 bedroom apartment



Floor Plot
Ground 517

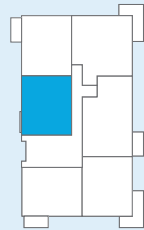
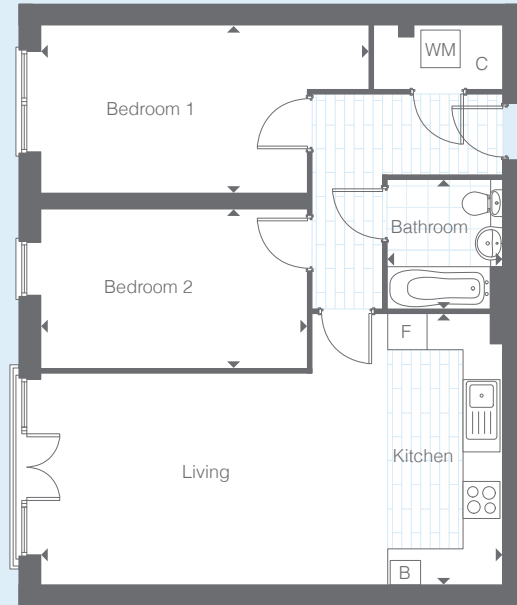
Room	Metric	Imperial
Living / Kitchen Area	4.02m x 7.54m	13'2" x 24'9"
Bedroom 1	2.80m x 4.22m	9'2" x 13'10"
Bedroom 2	2.69m x 4.22m	8'10" x 13'10"
Bathroom	2.54m x 2.05m	8'4" x 6'9"

- B Boiler
- F Fridge
- WM Washing Machine
- C Cupboard

All floor plans in this brochure are for general guidance only. All room dimensions are subject to a plus/minus 5% tolerance. Measures are from plans and "as built", represent the largest cross section of each room and may vary and. Size of balconies vary between apartments of the same type. Any dimensions shown are not intended to be used for carpet sizes, appliances, spaces or items of furniture. These particulars do not constitute any part of an offer or contract with regard to the specifications.

Type 7

2 bedroom apartment



Floor	Plot
First	518
Second	524
Third	530
Fourth	536

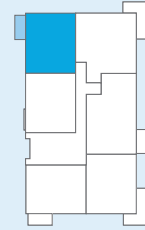
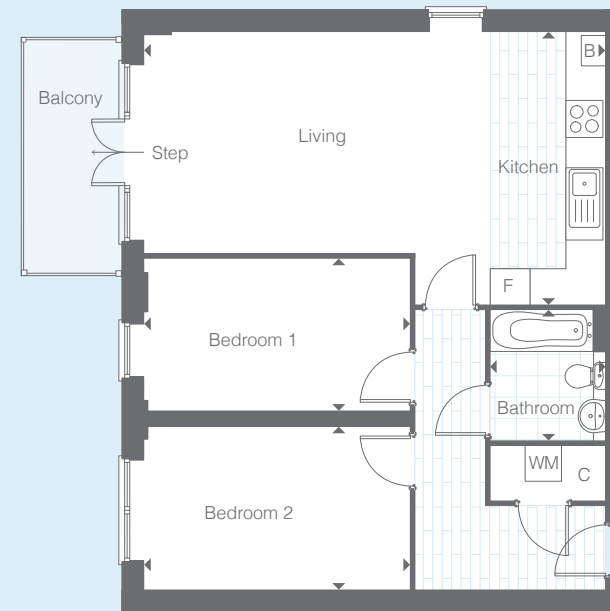
Room	Metric	Imperial
Living / Kitchen Area	7.61m x 4.46m	25'0" x 14'8"
Bedroom 1	5.41m x 2.77m	17'9" x 9'1"
Bedroom 2	4.39m x 2.63m	14'5" x 8'8"
Bathroom	1.90m x 2.13m	6'3" x 7'0"

- B Boiler
- F Fridge
- WM Washing Machine
- C Cupboard

All floor plans in this brochure are for general guidance only. All room dimensions are subject to a plus/minus 5% tolerance. Measures are from plans and "as built", represent the largest cross section of each room and may vary and. Size of balconies vary between apartments of the same type. Any dimensions shown are not intended to be used for carpet sizes, appliances, spaces or items of furniture. These particulars do not constitute any part of an offer or contract with regard to the specifications.

Type 8

2 bedroom apartment



Floor	Plot
First	519
Second	525
Third	531
Fourth	537

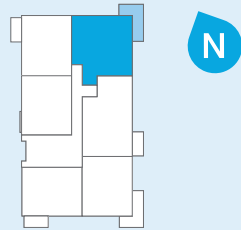
Room	Metric	Imperial
Living / Kitchen Area	7.61m x 4.51m	25'0" x 14'10"
Bedroom 1	4.39m x 2.50m	14'5" x 8'2"
Bedroom 2	4.39m x 2.69m	14'5" x 8'10"
Bathroom	1.90m x 2.17m	6'3" x 7'1"

- B Boiler
- F Fridge
- WM Washing Machine
- C Cupboard

All floor plans in this brochure are for general guidance only. All room dimensions are subject to a plus/minus 5% tolerance. Measures are from plans and "as built", represent the largest cross section of each room and may vary and. Size of balconies vary between apartments of the same type. Any dimensions shown are not intended to be used for carpet sizes, appliances, spaces or items of furniture. These particulars do not constitute any part of an offer or contract with regard to the specifications.

Type 9

2 bedroom apartment



Floor	Plot
First	520
Second	526
Third	532
Fourth	538

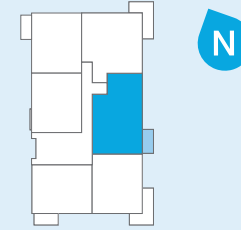
Room	Metric	Imperial
Living / Dining Area	6.85m x 3.68m	22'9" x 12'2"
Kitchen	2.39m x 4.25m	13'11" x 7'7"
Bedroom 1	5.54m x 2.56m	18'2" x 9'1"
Bedroom 2	4.44m x 2.59m	14'8" x 8'5"
Bathroom	2.14m x 2.55m	6'11" x 6'5"
En-Suite	1.99m x 2.50m	7'3" x 5'7"

- B Boiler
- F Fridge
- WM Washing Machine
- C Cupboard
- Water Cylinder

All floor plans in this brochure are for general guidance only. All room dimensions are subject to a plus/minus 5% tolerance. Measures are from plans and "as built", represent the largest cross section of each room and may vary and. Size of balconies vary between apartments of the same type. Any dimensions shown are not intended to be used for carpet sizes, appliances, spaces or items of furniture. These particulars do not constitute any part of an offer or contract with regard to the specifications.

Type 10

2 bedroom apartment



Floor	Plot
First	521
Second	527
Third	533
Fourth	539

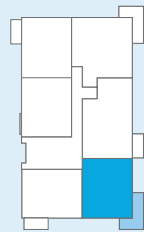
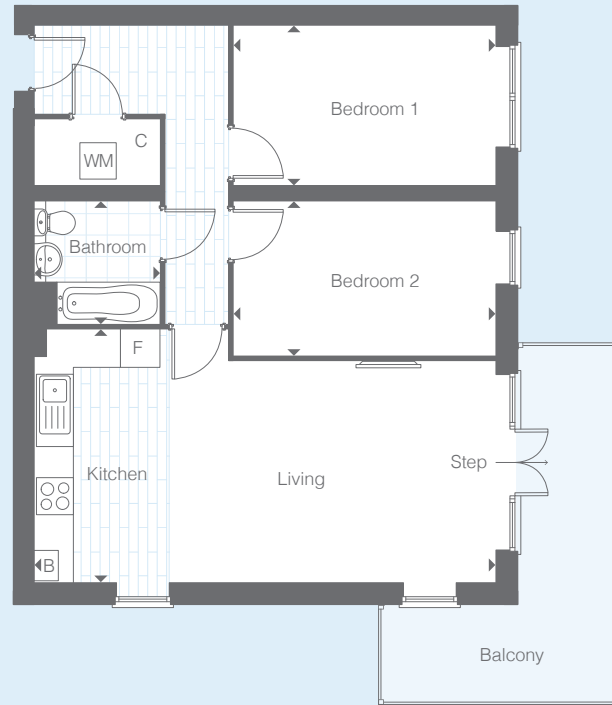
Room	Metric	Imperial
Living / Dining Area	7.61m x 3.78m	25'0" x 12'5"
Kitchen	3.90m x 2.15m	12'10" x 7'1"
Bedroom 1	4.89m x 3.08m	16'1" x 10'1"
Bedroom 2	3.98m x 3.03m	13'1" x 9'11"
Bathroom	2.26m x 1.96m	7'5" x 6'5"
En-Suite	2.26m x 1.70m	7'5" x 5'7"

- B Boiler
- F Fridge
- WM Washing Machine
- C Cupboard
- Water Cylinder

All floor plans in this brochure are for general guidance only. All room dimensions are subject to a plus/minus 5% tolerance. Measures are from plans and "as built", represent the largest cross section of each room and may vary and. Size of balconies vary between apartments of the same type. Any dimensions shown are not intended to be used for carpet sizes, appliances, spaces or items of furniture. These particulars do not constitute any part of an offer or contract with regard to the specifications.

Type 11

2 bedroom apartment



N

Floor	Plot
First	522
Second	528
Third	534
Fourth	540

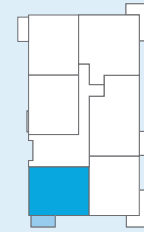
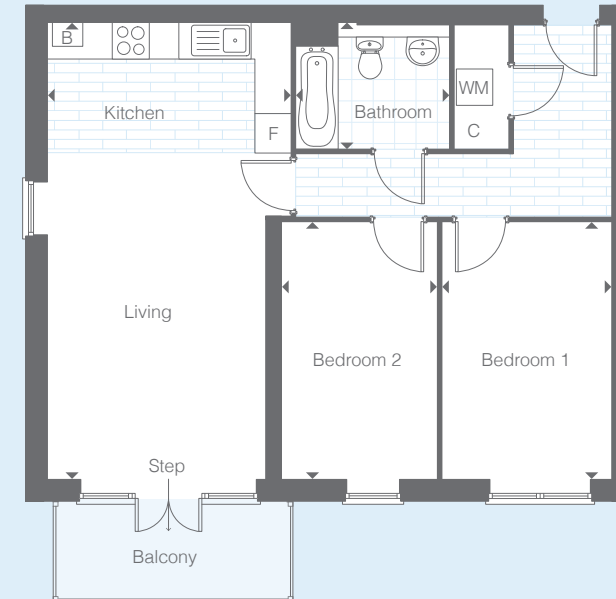
Room	Metric	Imperial
Living / Kitchen Area	7.61m x 4.19m	25'0" x 13'9"
Bedroom 1	4.33m x 2.69m	14'3" x 8'10"
Bedroom 2	4.33m x 2.55m	14'3" x 8'4"
Bathroom	2.03m x 2.07m	6'8" x 6'10"

- B Boiler
- F Fridge
- WM Washing Machine
- C Cupboard

All floor plans in this brochure are for general guidance only. All room dimensions are subject to a plus/minus 5% tolerance. Measures are from plans and "as built", represent the largest cross section of each room and may vary and. Size of balconies vary between apartments of the same type. Any dimensions shown are not intended to be used for carpet sizes, appliances, spaces or items of furniture. These particulars do not constitute any part of an offer or contract with regard to the specifications.

Type 12

2 bedroom apartment



N

Floor	Plot
First	523
Second	529
Third	535
Fourth	541

Room	Metric	Imperial
Living / Kitchen Area	7.54m x 4.02m	24'9" x 13'2"
Bedroom 1	4.25m x 2.80m	13'11" x 9'2"
Bedroom 2	4.25m x 2.57m	13'11" x 8'5"
Bathroom	2.54m x 2.05m	8'4" x 6'9"

- B Boiler
- F Fridge
- WM Washing Machine
- C Cupboard

All floor plans in this brochure are for general guidance only. All room dimensions are subject to a plus/minus 5% tolerance. Measures are from plans and "as built", represent the largest cross section of each room and may vary and. Size of balconies vary between apartments of the same type. Any dimensions shown are not intended to be used for carpet sizes, appliances, spaces or items of furniture. These particulars do not constitute any part of an offer or contract with regard to the specifications.



With SO Resi, you buy your own home in your own way. You start with a share that's right for you, then you can buy extra shares over time, so it's all manageable and suits your income.

You start by buying between 25% and 75% of your SO Resi home. That means your monthly mortgage payments and deposit are smaller than they would be if you bought your home outright. There are two other monthly payments for your SO Resi home. One is the SO Resi payment for the share of your home that Metropolitan Thames Valley owns. The other is the service charge, which pays to look after the building you live in. There are also the usual other costs, like household utility bills. You can choose to buy a bigger share of your SO Resi home in the future, and even own 100%. The bigger the share you own, the lower your SO Resi payment will be.

We're here to help

Whatever your needs, we're on hand to help at every stage. First we'll help you understand all the costs and work out what's affordable for you. If you decide to go ahead, we'll be there to answer your questions. And in the future, we can help you with buying a bigger share of your home, or with selling up if it's time for a change.

You can sell your share at any time if you decide to move on.

Call: 020 8607 0550

Email: sales@soresi.co.uk

or visit: www.soresi.co.uk

Metropolitan Thames Valley has taken all reasonable care in the preparation of the information given in this brochure. However, this information is subject to change and has been prepared solely for the purpose of providing general guidance. Metropolitan Thames Valley does not warrant the accuracy or completeness of this information. Particulars are given for illustrative purposes only. Metropolitan Thames Valley undertakes continuous product development and any information given relating to our products may vary from time to time. The information and particulars set out within this brochure do not constitute part of a formal offer invitation or contract to acquire the relevant property. For the reasons mentioned above, no information contained in this brochure is to be relied upon. In particular, all plans prospectus, descriptions, dimensions and measurements are approximate and provided for guidance only. Such information is given without responsibility on the part of Metropolitan Thames Valley.

